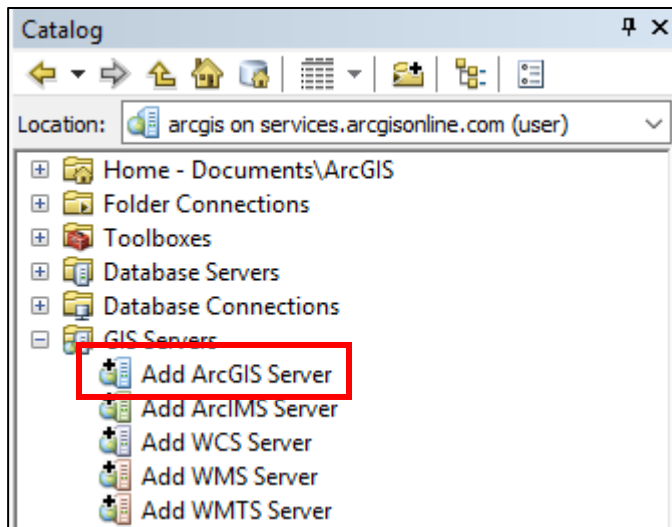


Map Milwaukee – GIS Services

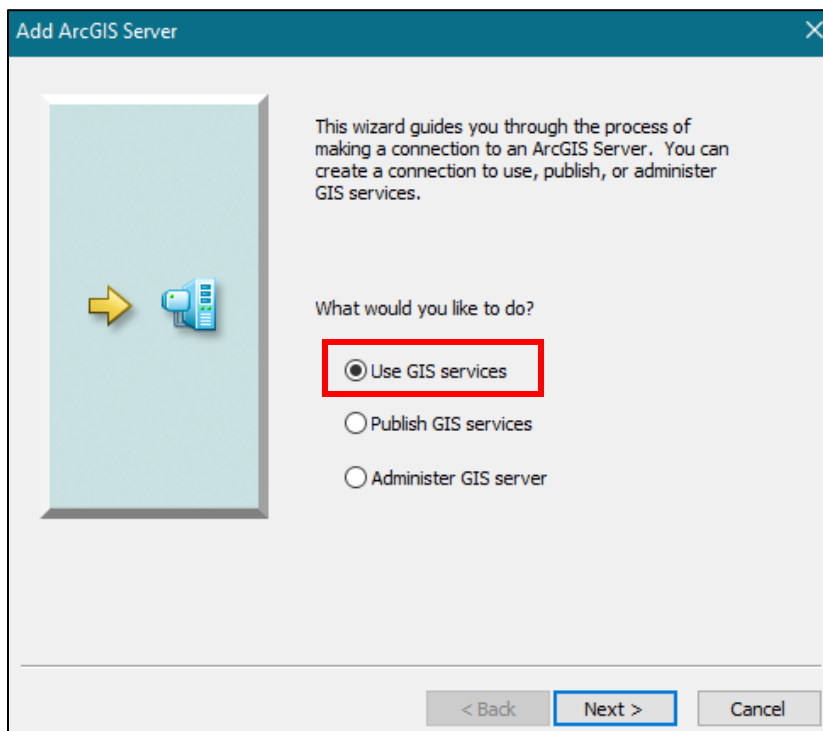
Map Milwaukee GIS services can be accessed through our REST endpoint. These can be used in other online mapping applications or they can be added to your mapping software. Below are instructions on how to add these services to Esri ArcMap and Portal.

Adding Services to ArcMap

1. In the Catalog pane in ArcMap, double-click on **Add ArcGIS Server**.

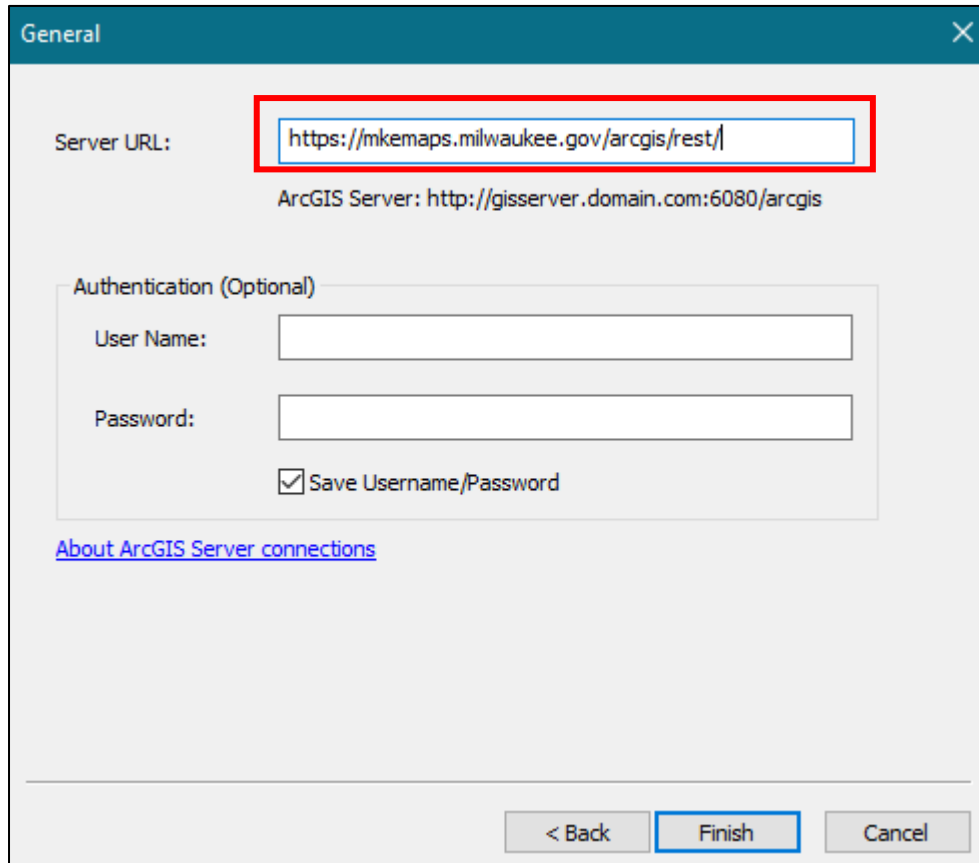


2. In the dialogue box that appears, select **Use GIS services** and click **Next >**.

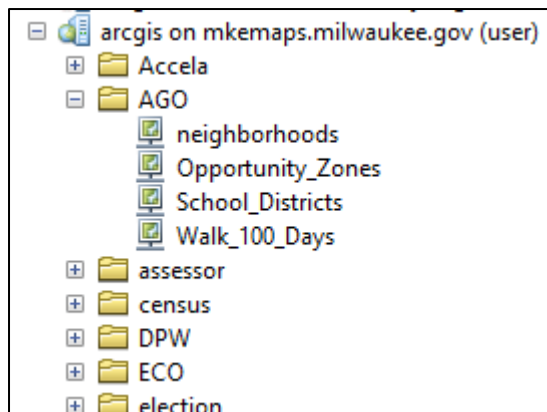


Map Milwaukee – GIS Services

3. In the Server URL text box, type <https://mkemaps.milwaukee.gov/arcgis/rest/> and then click **Finish**.

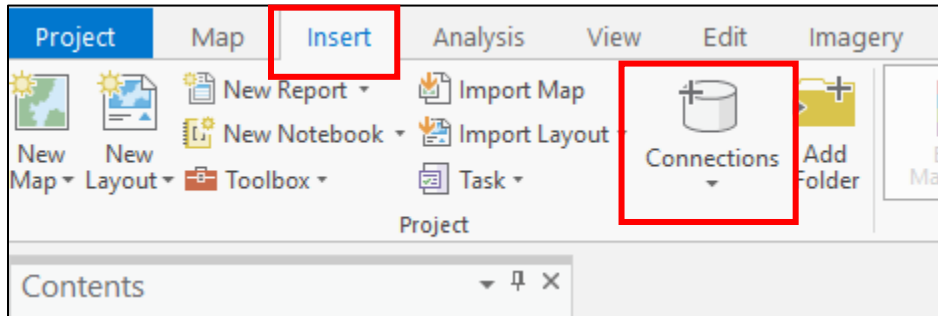


4. Now, under the GIS Services in the catalog, a connection will appear. Within the folders are the different preconfigured services that you can bring into your map. This connection will be saved across MXDs but will require you to double-click it to reconnect in a new MXD.

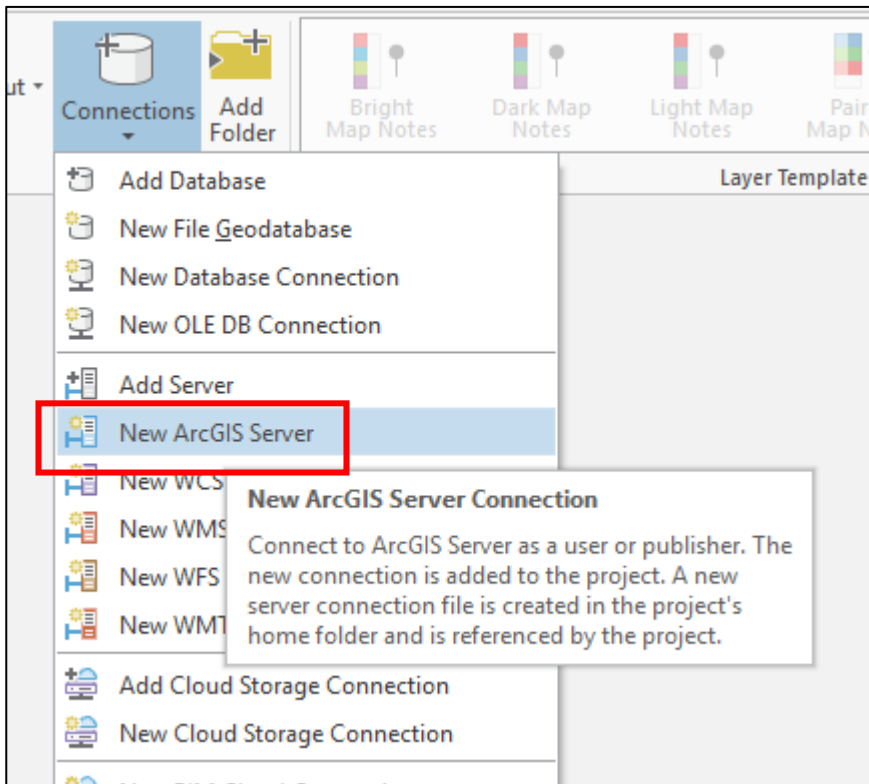


Adding Services to ArcPro

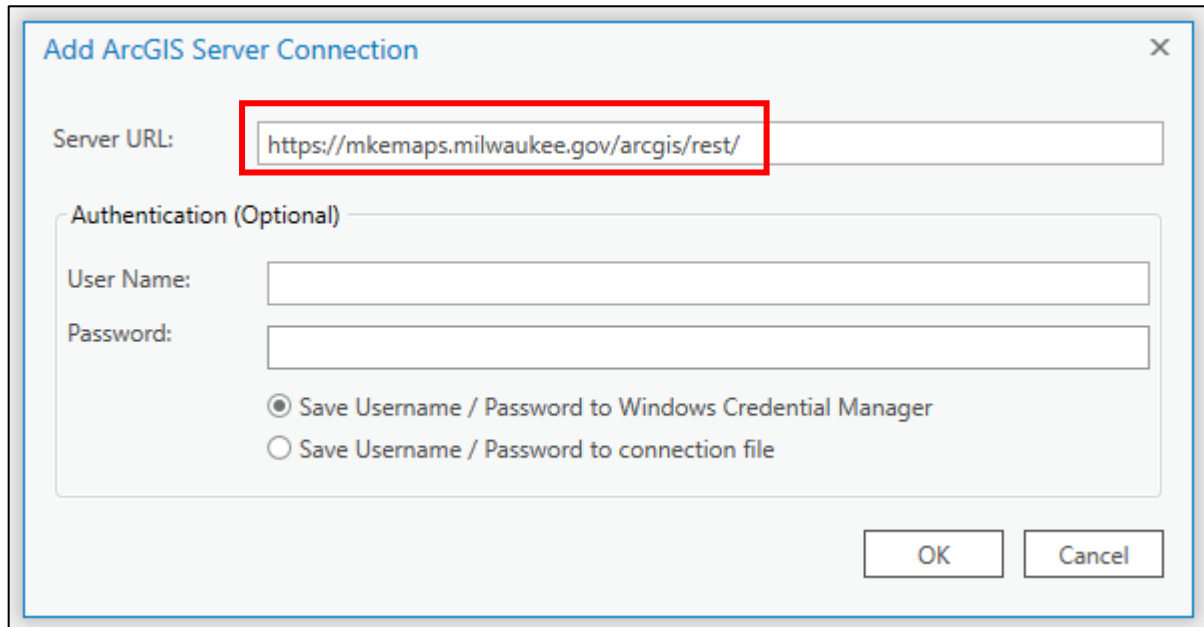
1. In your Pro project, go to the **Insert** tab and click on **Connections** button.



2. Click **New ArcGIS Server** from the dropdown menu.



3. In the Server URL textbox, type <https://mkemaps.milwaukee.gov/arcgis/rest/> and click **OK**.



4. The connection to the services will now show in Catalog. *Note: you will have to reestablish this connection with each new Pro project unlike ArcMap saving the connection across MXDs.*

