

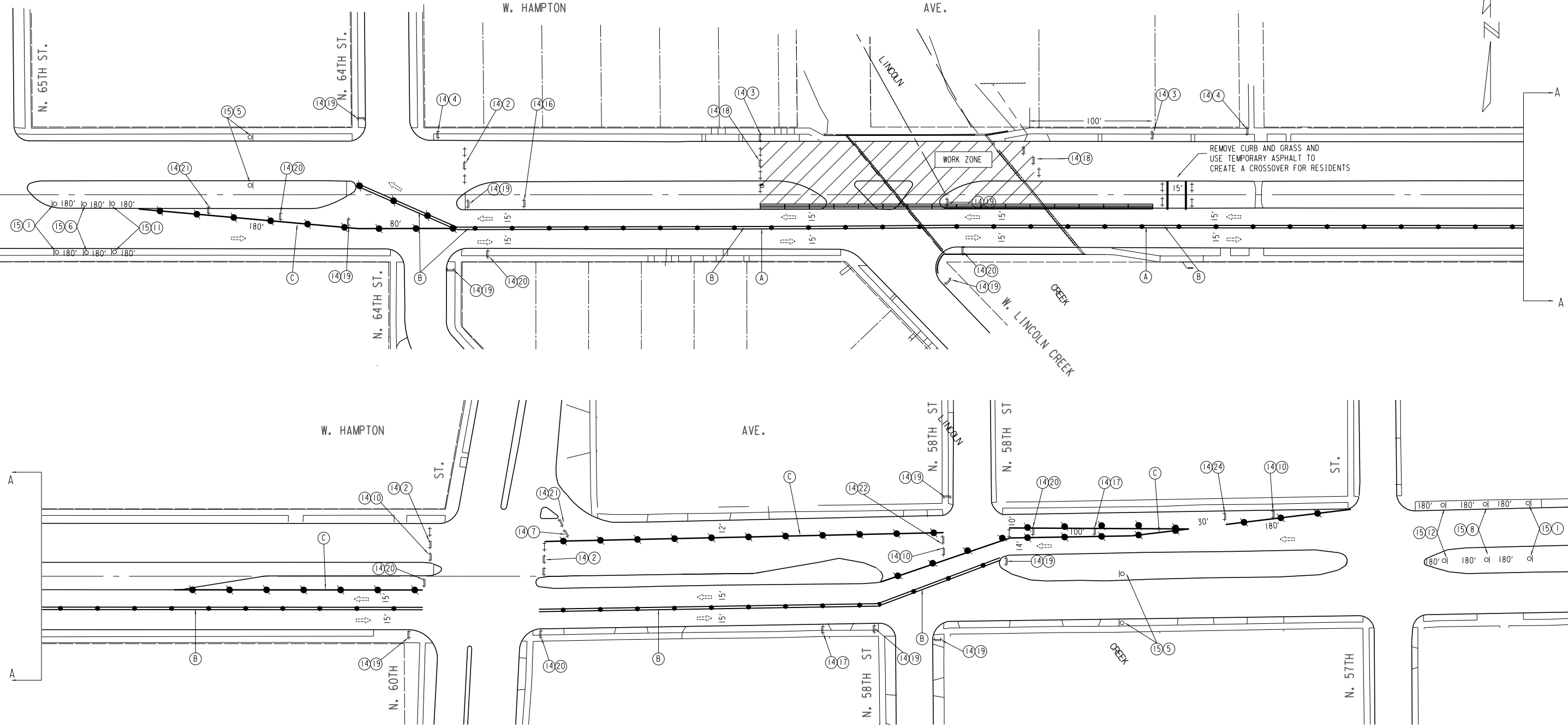
W:\STR\B0513\REHAB\PREL\TRAFFIC CONTROL.DGN



Department of Public Works

Infrastructure Services Division

STAGE I



				DRUMS W/LIGHTS 30' SPACING ● — (13)	(A) TPM, PAVEMENT MARKING PAINT, 4" DOUBLE YELLOW
				TYPE III BARRICADES ++ — (14)	(B) TPM, REMOVABLE TAPE, 4" DOUBLE YELLOW
				TYPE III BARRICADES W/ SIGN + — (14) + (X)	(C) TPM, REMOVABLE TAPE, 4" WHITE
				SIGNS BANNED TO TRAFFIC CONTROL DEVICE ○ — (15) + (X)	(D) TPM, REMOVABLE TAPE, 4" YELLOW
				WORK AREA [Hatched Box]	NOTE: ALL SIGNING SHALL BE THE CONTRACTORS RESPONSIBILITY. ALL SIGNS SHALL BE BANNED TO EXISTING UTILITY POLES UNLESS OTHERWISE NOTED. CONTRACTOR RESPONSIBLE FOR COVERING ALL CONFLICTING PAVEMENT MARKINGS. CONTRACTOR RESPONSIBLE FOR COVERING ALL SIGNS THAT ARE IN CONFLICT WITH TEMPORARY TRAFFIC CONTROL SIGNS.
				DIRECTION OF TRAFFIC [Arrow]	ALL DRUMS TO HAVE TYPE 'C' STEADY BURN LIGHTS. ALL TYPE III BARRICADES TO HAVE TYPE 'A' FLASHING LIGHTS.
				TUBULAR MARKERS 25' SPACING ●	
				CONCRETE BARRIERS [Double Line]	

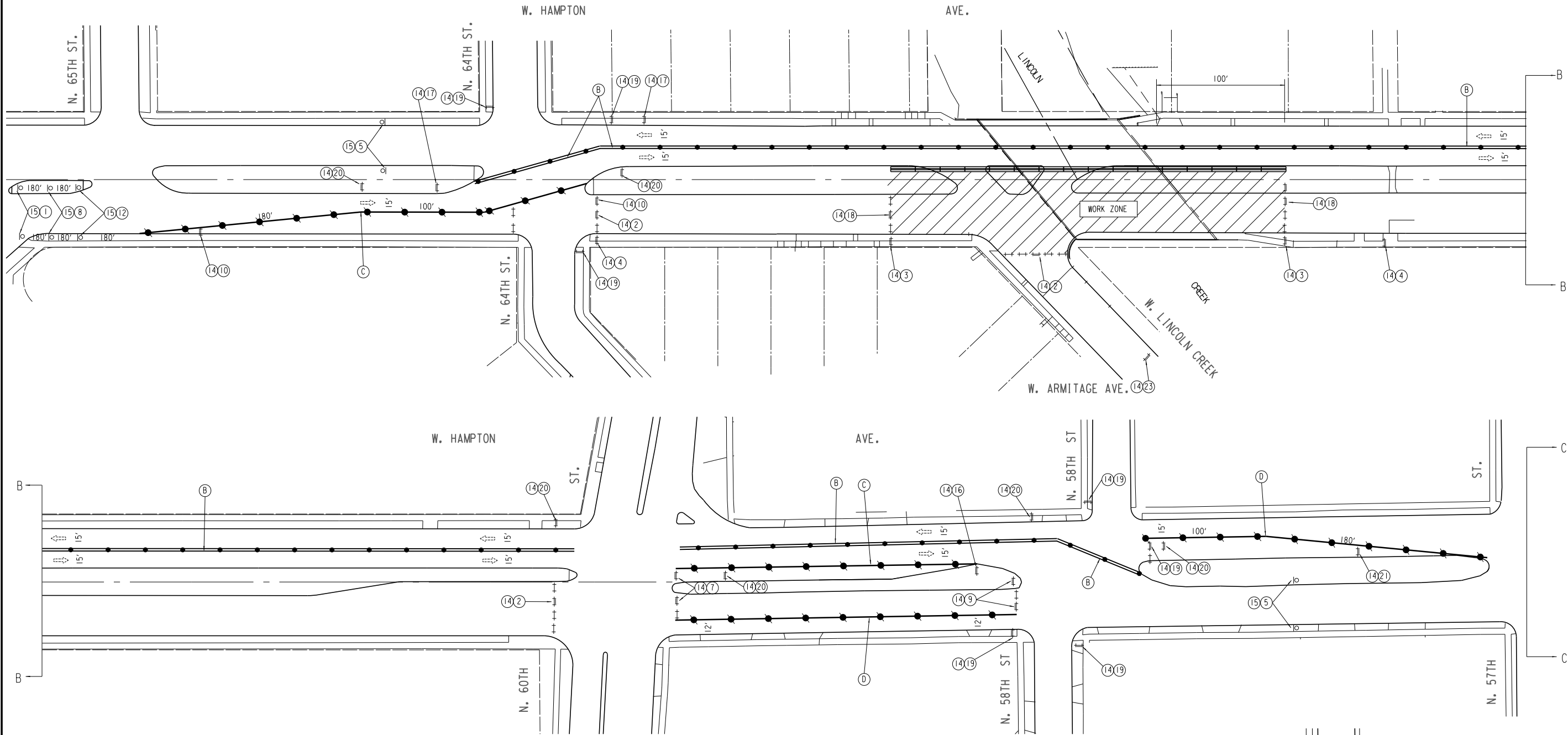
WEST HAMPTON AVENUE BRIDGE OVER LINCOLN CREEK TRAFFIC CONTROL - STAGE I

REVISIONS	
DESIGNED BY S.M.B.	SCALE
DRAWN BY D.B.	11-2018
CHECKED BY H.J.R.	JOB NUMBER B100-16-0103
DATE	SHEET NUMBER T2 OF T4
OF	

REVISED:

W:\STR\B0513\REHAB\PREL\IM\TRAFFIC CONTROL.DGN

STAGE II

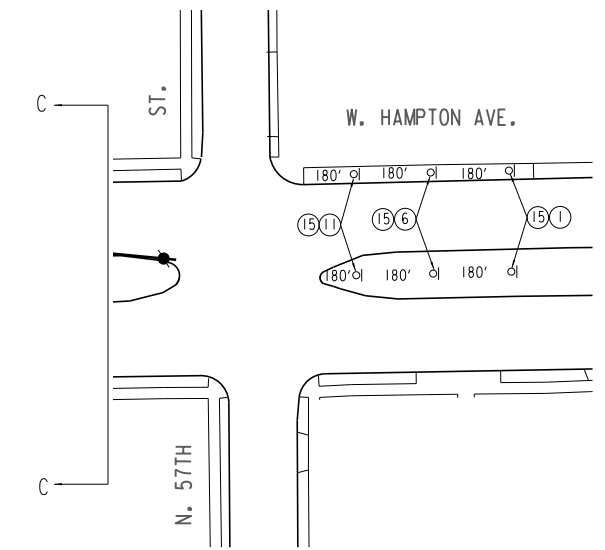


1	6	11	19
2	7	12	20
3	8	16	21
4	9	17	22
5	10	18	23
		24	

DRUMS W/LIGHTS 30' SPACING ● — 13
 TYPE III BARRICADES ++ — 14
 TYPE III BARRICADES W/ SIGN ++ — 14 + X
 SIGNS BANNED TO TRAFFIC CONTROL DEVICE ○ — 15 + X
 WORK AREA
 DIRECTION OF TRAFFIC
 TUBULAR MARKERS 25' SPACING ●
 CONCRETE BARRIERS

(A) TPM, PAVEMENT MARKING PAINT, 4" DOUBLE YELLOW
 (B) TPM, REMOVABLE TAPE, 4" DOUBLE YELLOW
 (C) TPM, REMOVABLE TAPE, 4" WHITE
 (D) TPM, REMOVABLE TAPE, 4" YELLOW

NOTE: ALL SIGNING SHALL BE THE CONTRACTORS RESPONSIBILITY. ALL SIGNS SHALL BE BANNED TO EXISTING UTILITY POLES UNLESS OTHERWISE NOTED. CONTRACTOR RESPONSIBLE FOR COVERING ALL CONFLICTING PAVEMENT MARKINGS. CONTRACTOR RESPONSIBLE FOR COVERING ALL SIGNS THAT ARE IN CONFLICT WITH TEMPORARY TRAFFIC CONTROL SIGNS. ALL DRUMS TO HAVE TYPE 'C' STEADY BURN LIGHTS. ALL TYPE III BARRICADES TO HAVE TYPE 'A' FLASHING LIGHTS.



WEST HAMPTON AVENUE BRIDGE
 OVER LINCOLN CREEK
 TRAFFIC CONTROL - STAGE II

REVISIONS

DESIGNED BY S.M.B.	SCALE
DRAWN BY D.B.	
CHECKED BY H.J.R.	
DATE 11-2018	
JOB NUMBER BR100-16-0103	
SHEET NUMBER T3 OF T4	
OF	

REVISED: