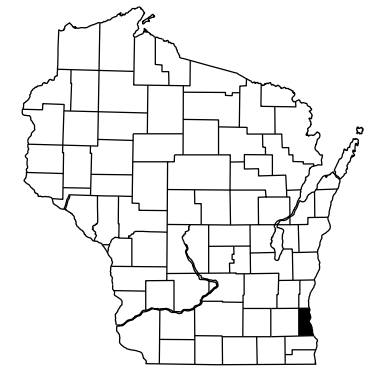


PROJECT ID WITH: N/A 2984-51-70 COUNTY MILWAUKEE

ORDER OF SHEETS

SECTION NO. 1	TITLE
SECTION NO. 2	TYPICAL SECTIONS AND DETAILS
SECTION NO. 3	ESTIMATE OF QUANTITIES
SECTION NO. 3	MISCELLANEOUS QUANTITIES
SECTION NO. 4	RIGHT OF WAY PLAT
SECTION NO. 5	PLAN AND PROFILE
SECTION NO. 6	STANDARD DETAIL DRAWINGS
SECTION NO. 7	SIGN PLATES
SECTION NO. 8	STRUCTURE PLANS
SECTION NO. 9	COMPUTER EARTHWORK DATA
SECTION NO. 9	CROSS SECTIONS

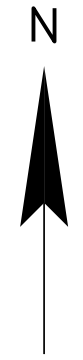


STATE OF WISCONSIN
 DEPARTMENT OF TRANSPORTATION
 PLAN OF PROPOSED IMPROVEMENT
SOUTH DANA COURT
 BRIDGE OVER LAND
 LOCAL STREET
 MILWAUKEE COUNTY

STATE PROJECT	FEDERAL PROJECT	
	PROJECT	CONTRACT
2984-51-00		I

60% PLAN
 SUBMITTED ON _____

STATE PROJECT NUMBER
2984-51-70



DESIGN DESIGNATION

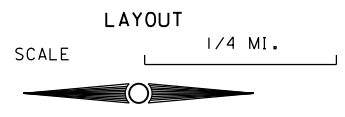
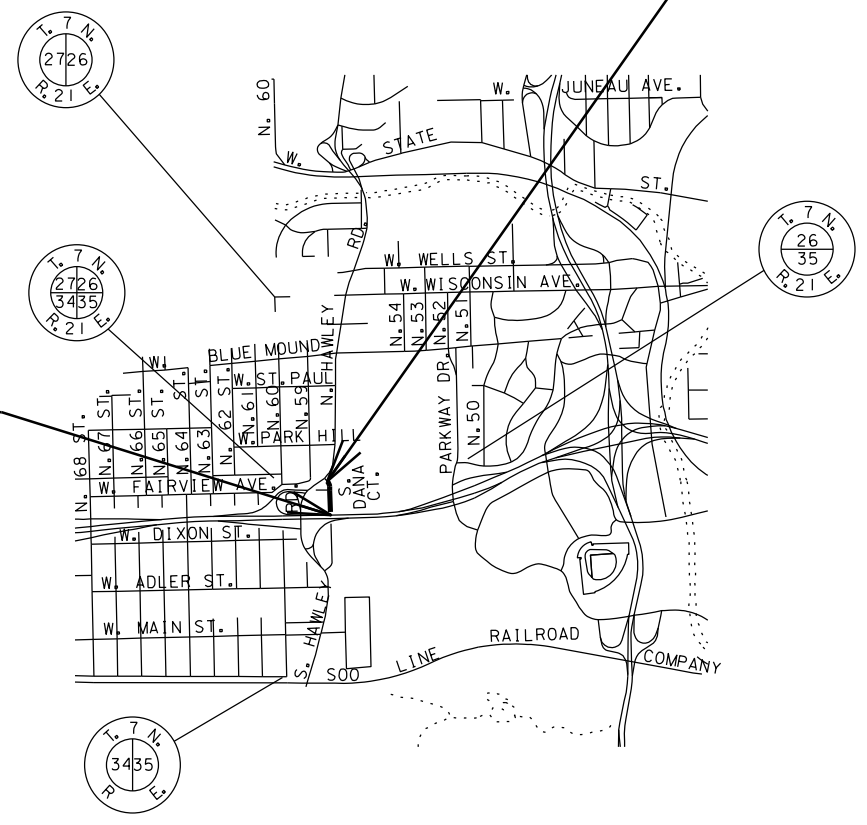
A.D.T. (CURRENT) = LESS THAN 500
 A.D.T. 2037 = LESS THAN 500
 D.H.V. =
 D. =
 T. =
 DESIGN SPEED = 30 MPH
 ESALS =

CONVENTIONAL SIGNS

COUNTY LINE	-----	CABLE TELEVISION	TV
TOWNSHIP OR RANGE LINE	-----	CITY UNDERGROUND CONDUIT	CUC
SECTION LINE	-----	ELECTRIC	E
CORPORATE OR CITY LIMITS	-----	GAS	G
PROPERTY LINE	----- P.L.	TRAFFIC & ELECTRICAL SERVICES	TE&ES
STANDARD BENCH MARK	●	MILWAUKEE METRO SEWERAGE DISTRICT	MMSD
EXISTING RIGHT OF WAY LINE	----- R/W	STEAM	STEAM
BUILDING LIMITS	-----	WATER	W
PROPOSED SEWER LATERAL	-----	FIRE & POLICE CALL BOX	☒
BASE OF SURVEY LINE	-----	LIGHT POLE	●
CONCRETE WALK/DWY. REMOVAL	▨	POWER POLE	■
LIMITS OF CONCRETE PAVEMENT REMOVAL	X X X X X X	TELEPHONE OR TELEGRAPH POLE	⊗
CATCH BASIN OR INLET	☐	TRAFFIC SIGNAL	⊗
EXISTING	☐	TRAFFIC SIGNAL CONTROL BOX	⊗
PROPOSED	⊗	HYDRANT	⊗
		GAS OR WATER GATE VALVE	⊗
COMBUSTIBLE FLUIDS UNDER PRESSURE	☠	MANHOLES - SEWER	○
RAILROADS	+++++	UTILITY (TYPE)	□
FENCE	x (TYPE) x	TREES - EXISTING	○
		TREES - TO BE REMOVED	⊗

BEGIN PROJECT 2984-51-70
 STA. 10+81.0, T/L

END PROJECT 2984-51-70
 STA. 15+31.0, T/L



TOTAL NET LENGTH OF CENTERLINE = 0.085 MI (URBAN)

THE COORDINATES ON THIS PLAN ARE BASED ON THE WISCONSIN STATE PLANE COORDINATE SYSTEM, MILWAUKEE COUNTY, NAD 27 SOUTH ZONE. COMBINED SCALE AND SEA LEVEL REDUCTION FACTOR .9992542
 ELEVATIONS SHOWN ON THIS PLAN ARE REFERENCED TO THE CITY OF MILWAUKEE DATUM.
 TO CONVERT ELEVATIONS SHOWN ON THIS PLAN TO NATIONAL GEODESIC VERTICAL DATUM OF 1929, ADD 580.603 TO ELEVATIONS SHOWN ON THIS PLAN.

Accepted For
 City of Milwaukee

(Date) _____
 Commissioner of Public Works

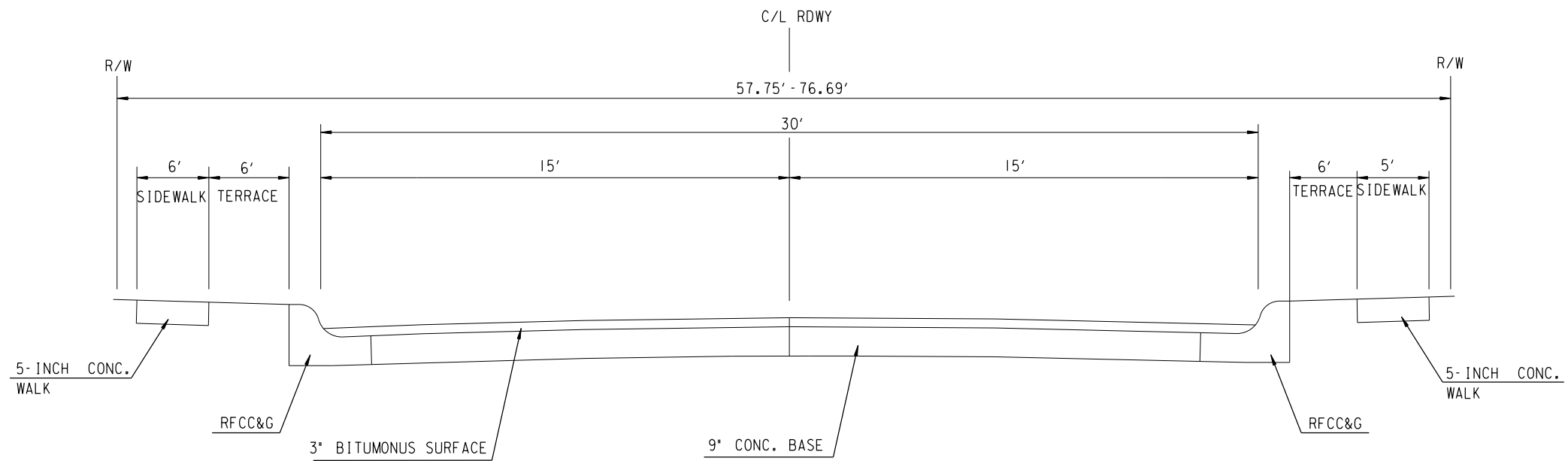
Original Plans Prepared By

(Date) _____
 City Engineer

STATE OF WISCONSIN
 DEPARTMENT OF TRANSPORTATION

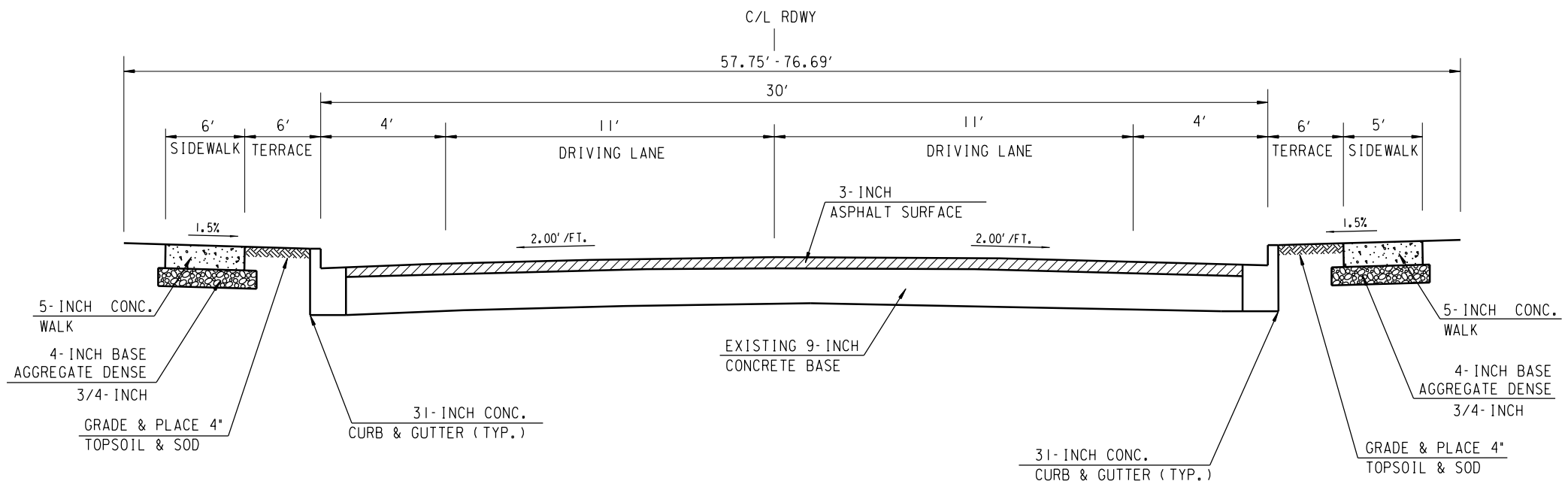
PREPARED BY _____
 SURVEYOR _____ CITY OF MILWAUKEE
 DESIGNER _____ CITY OF MILWAUKEE
 PROJECT MANAGER _____
 DISTRICT EXAMINER _____
 DISTRICT SUPERVISOR _____
 C.O. EXAMINER _____

APPROVED FOR DISTRICT OFFICE
 DATE: _____ (SIGNATURE) _____



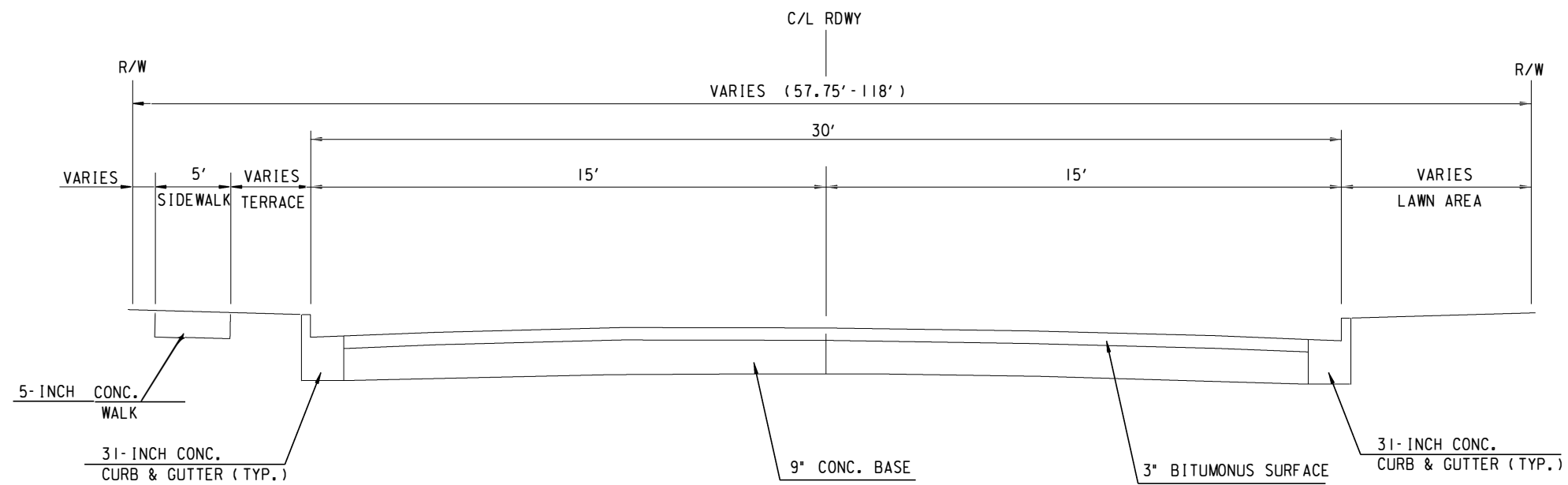
TYPICAL SECTION - EXISTING PAVEMENT
 SOUTH DANA CT OVER WISCONSIN ELECTRIC POWER CO. RIGHT OF WAY

APPROACHES ROADWAY
 STA. 12 + 00
 (LOOKING NORTH)

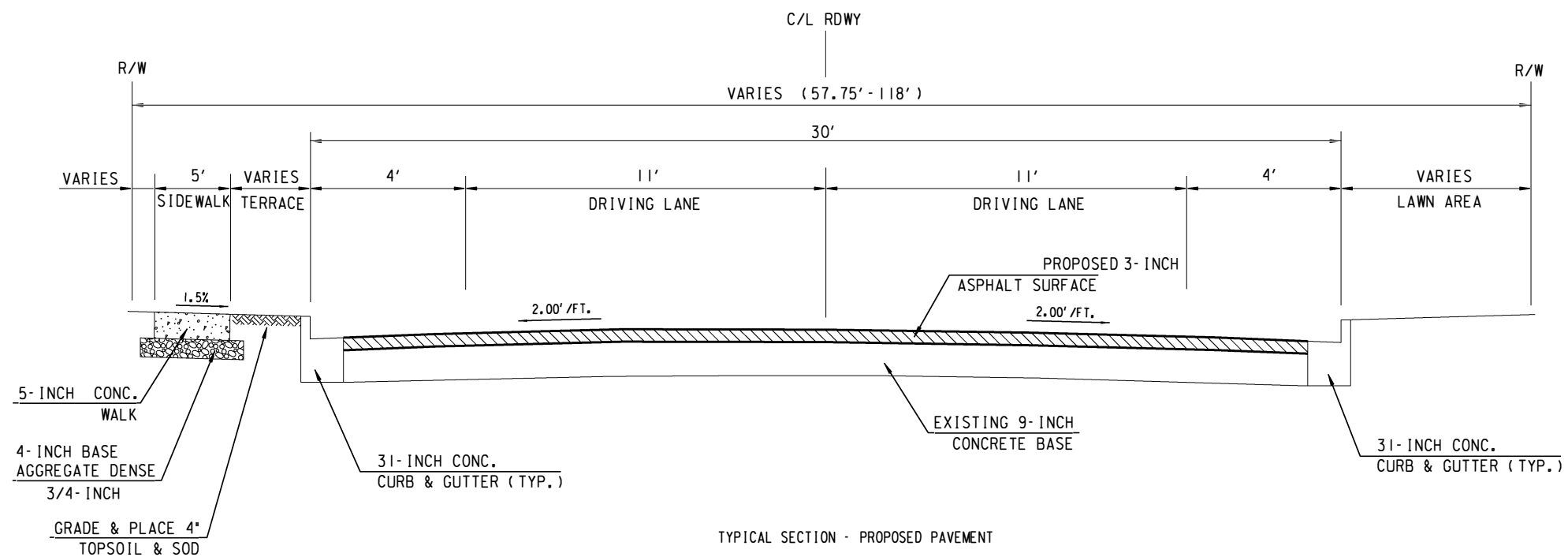


TYPICAL SECTION - PROPOSED PAVEMENT
 SOUTH DANA CT OVER WISCONSIN ELECTRIC POWER CO. RIGHT OF WAY

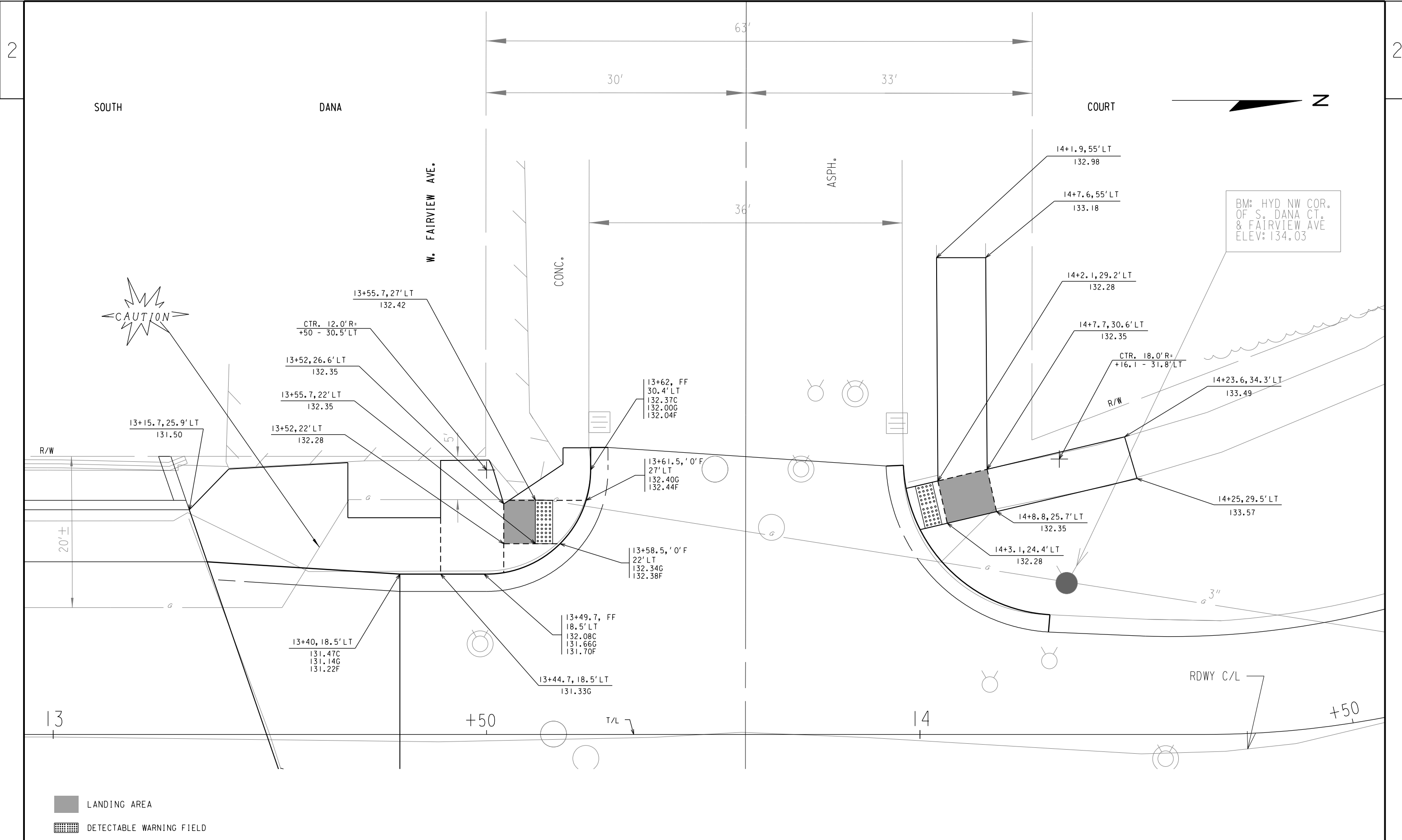
APPROACHES ROADWAY
 STA. 12 + 00
 (LOOKING NORTH)



TYPICAL SECTION - EXISTING PAVEMENT
 SOUTH DANA CT OVER WISCONSIN ELECTRIC POWER CO. RIGHT OF WAY
 APPROACHES ROADWAY
 STA. 14 + 50
 (LOOKING NORTH)



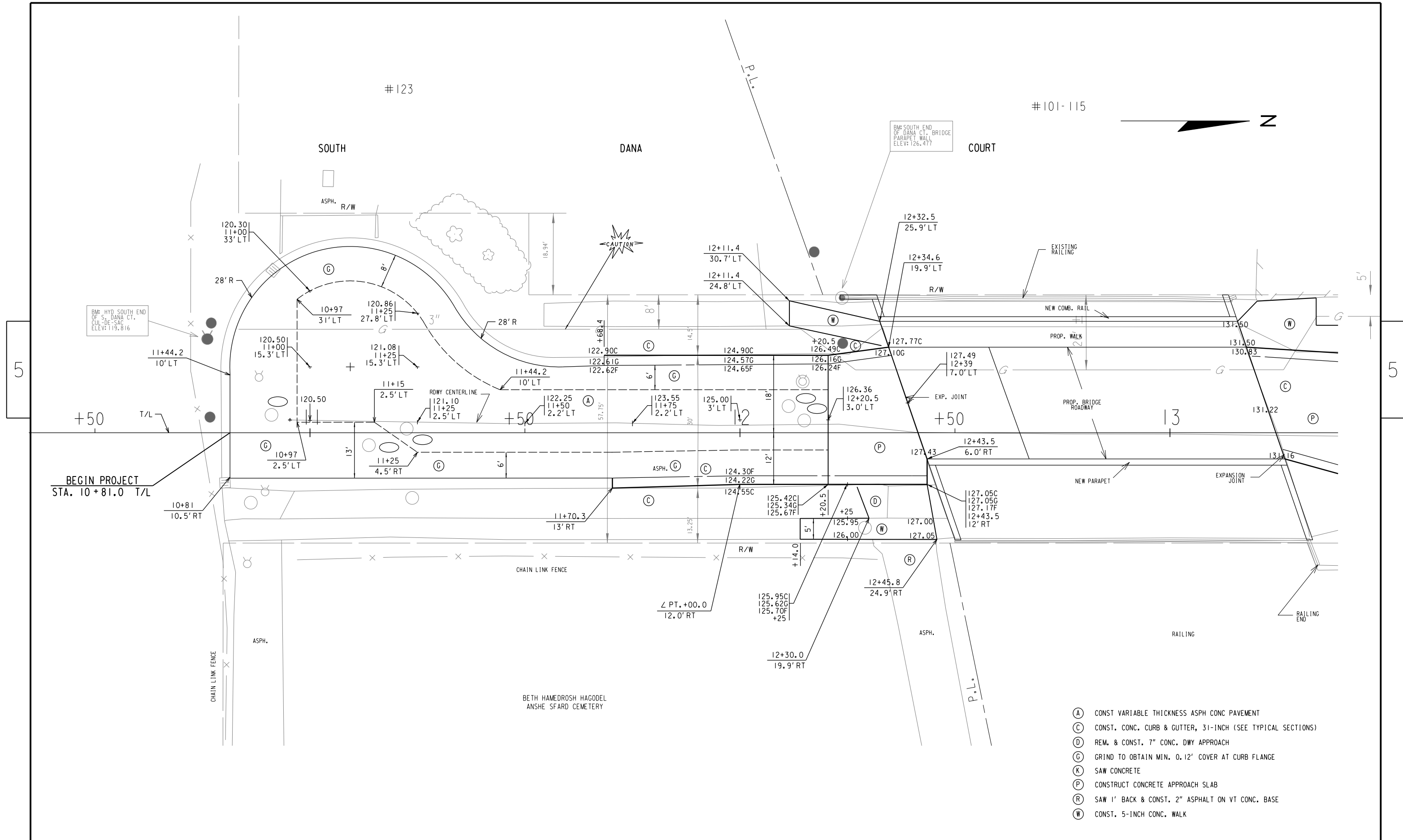
TYPICAL SECTION - PROPOSED PAVEMENT
 SOUTH DANA CT OVER WISCONSIN ELECTRIC POWER CO. RIGHT OF WAY
 APPROACHES ROADWAY
 STA. 14 + 50
 (LOOKING NORTH)



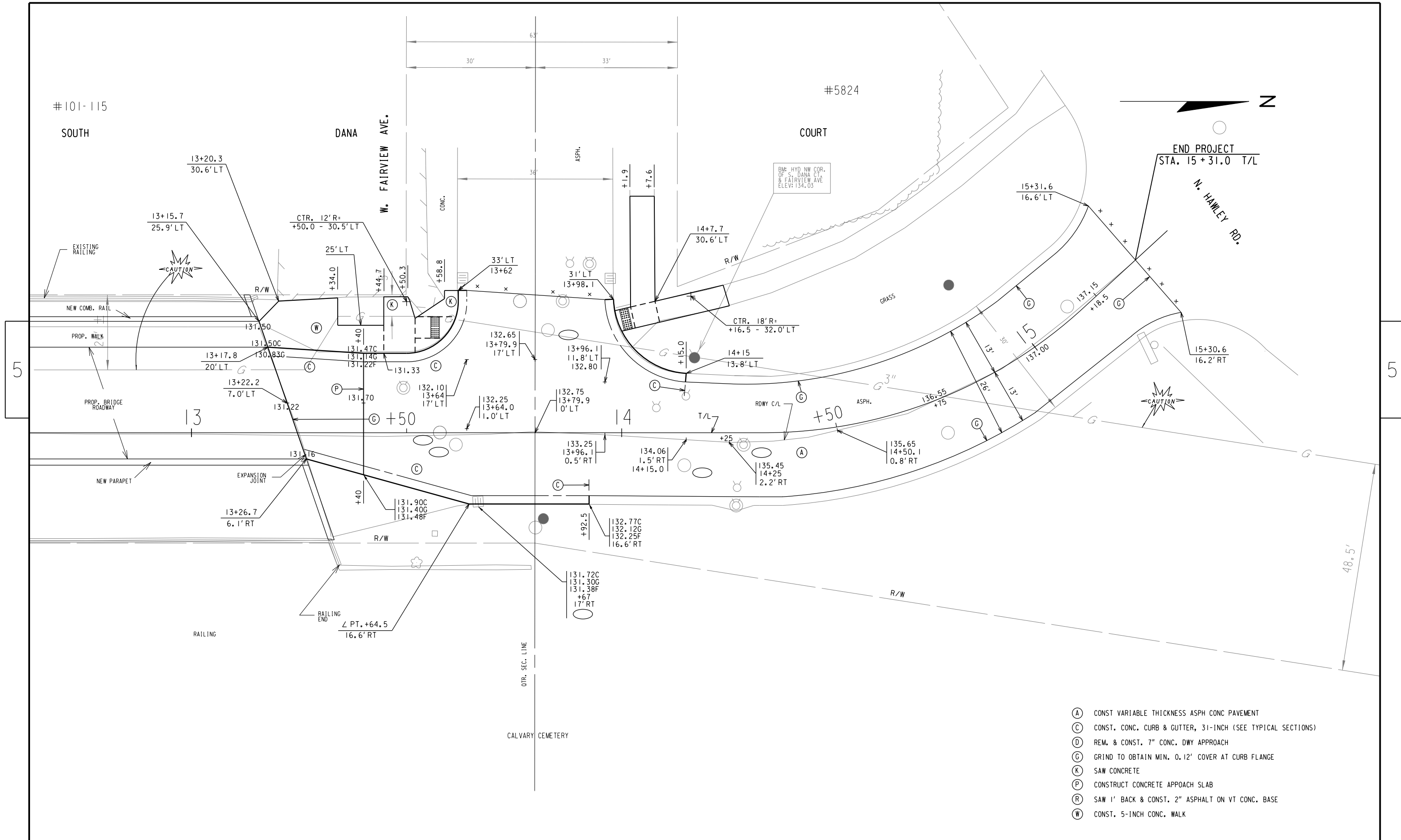
BM: HYD NW COR.
OF S. DANA CT.
& FAIRVIEW AVE
ELEV: 134.03



LANDING AREA
 DETECTABLE WARNING FIELD



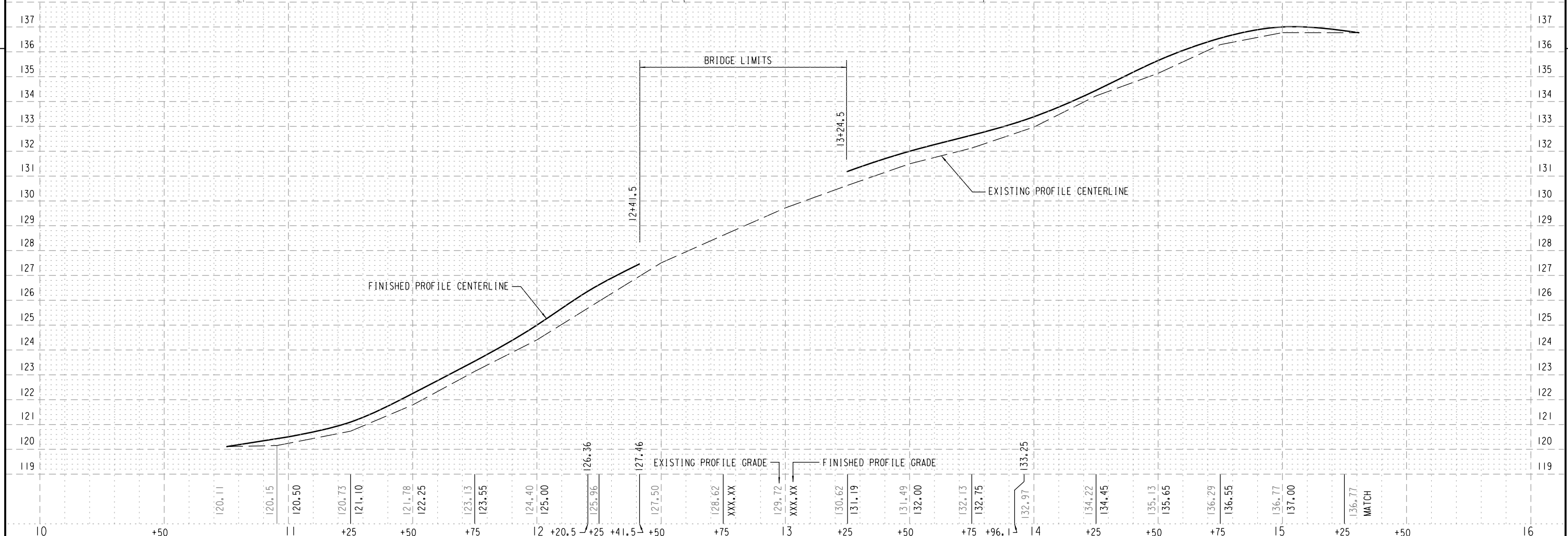
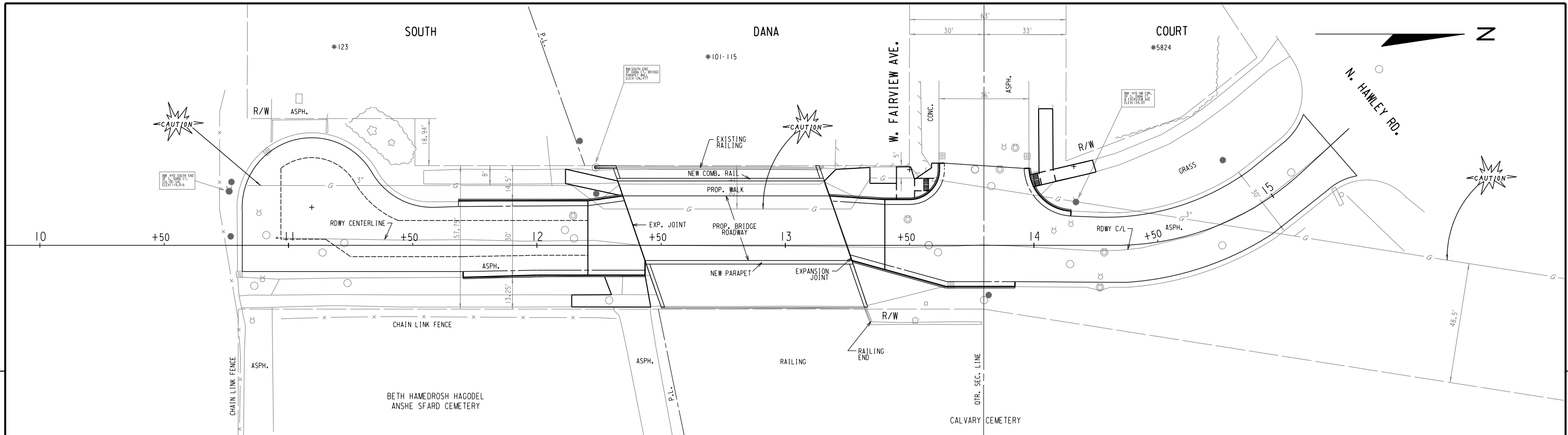
- (A) CONST VARIABLE THICKNESS ASPH CONC PAVEMENT
- (C) CONST. CONC. CURB & GUTTER, 31-INCH (SEE TYPICAL SECTIONS)
- (D) REM. & CONST. 7" CONC. DWY APPROACH
- (G) GRIND TO OBTAIN MIN. 0.12' COVER AT CURB FLANGE
- (K) SAW CONCRETE
- (P) CONSTRUCT CONCRETE APPROACH SLAB
- (R) SAW 1' BACK & CONST. 2" ASPHALT ON VT CONC. BASE
- (W) CONST. 5-INCH CONC. WALK



STATE PROJECT NUMBER 2984-51-70

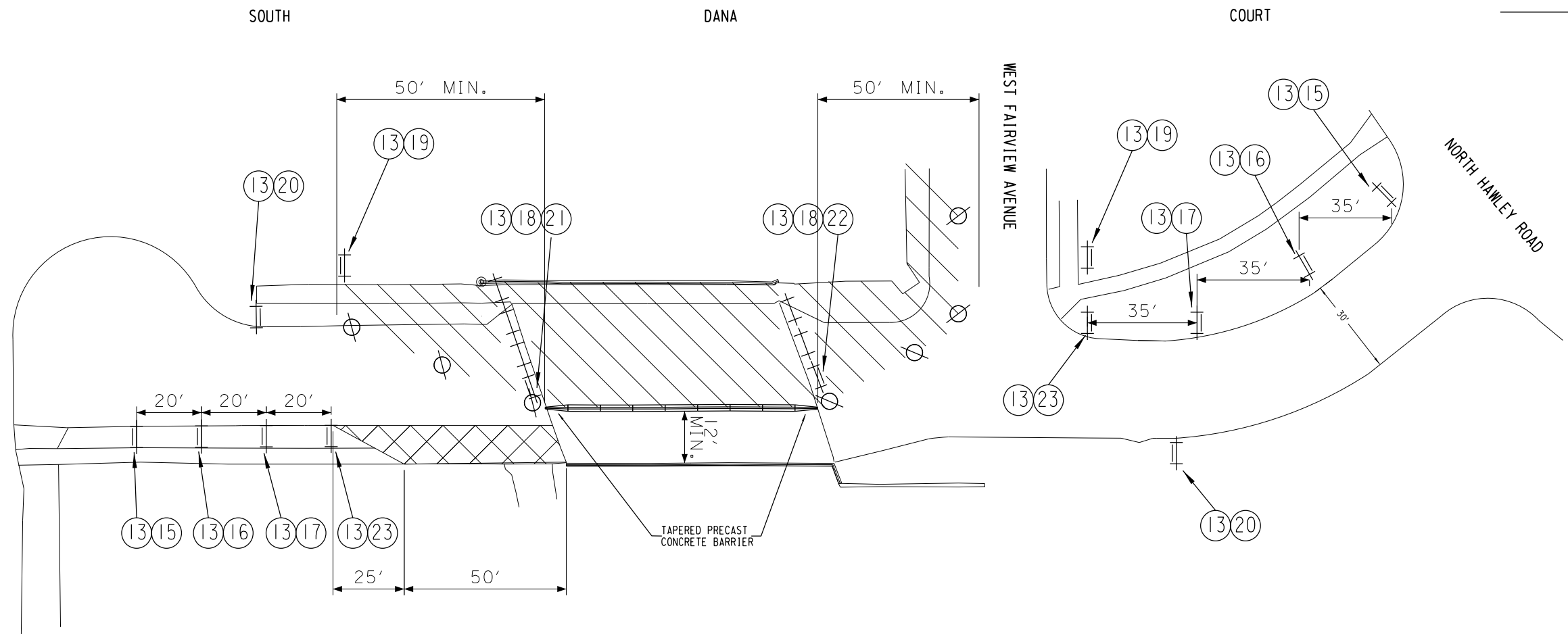
HWY: LOCAL STREET COUNTY: MILWAUKEE PLAN

SCALE FEET 0' 20' SHEET NO: E



STATE PROJECT NUMBER 2984-51-70 - - HWY: LOCAL STREET COUNTY: MILWAUKEE PLAN-PROFILE SCALE FEET 0' 40' SHEET NO: E

STAGE I

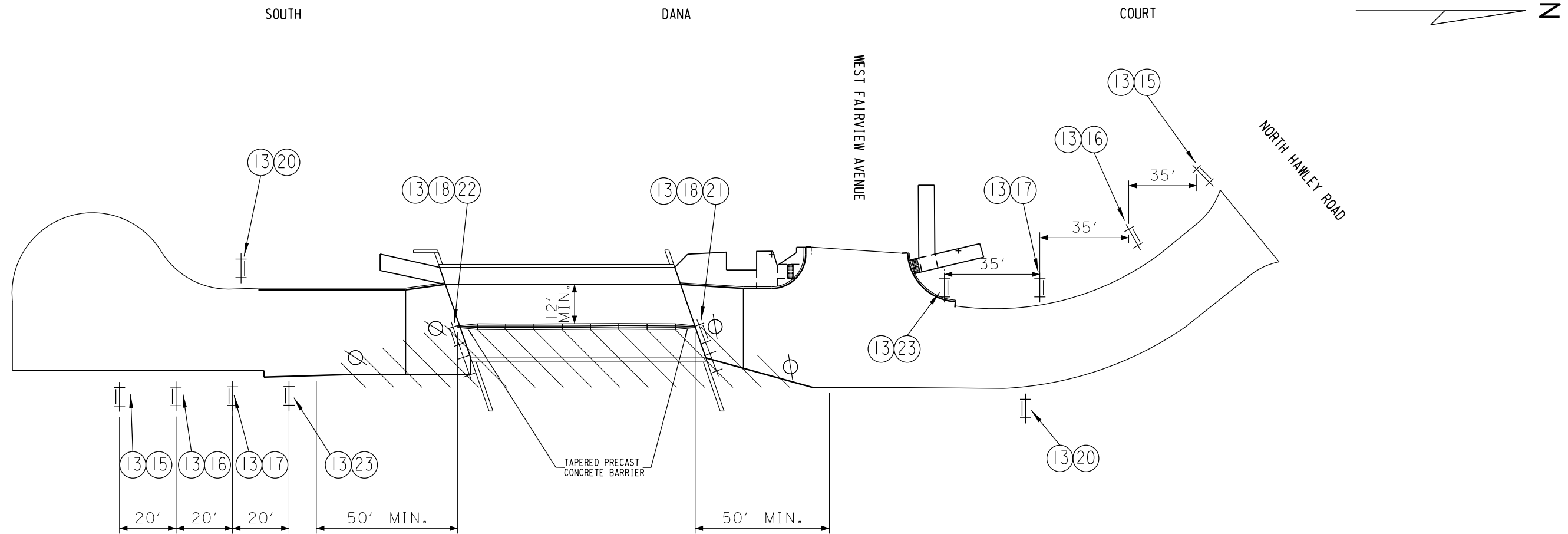


SHEET 1 OF 1

(15)	(18)	(21)	LEGEND DRUMS W/LIGHTS 30' SPACING TYPE III BARRICADES ++ TYPE III BARRICADES W/ SIGN SIGNS BANDED TO TRAFFIC CONTROL DEVICE OR POLE WORK AREA TEMPORARY ASPHALT CONCRETE BARRIER SECTION CONCRETE BARRIER TAPER SECTION
(16)	(19)	(22)	
(17)	(20)	(23)	

NOTE: ALL SIGNING SHALL BE THE CONTRACTORS RESPONSIBILITY. ALL SIGNS SHALL BE BANDED TO EXISTING UTILITY POLES UNLESS OTHERWISE NOTED. CONTRACTOR RESPONSIBLE FOR COVERING ALL CONFLICTING PAVEMENT MARKINGS. CONTRACTOR RESPONSIBLE FOR COVERING ALL SIGNS THAT ARE IN CONFLICT WITH TEMPORARY TRAFFIC CONTROL SIGNS. TRAFFIC CONTROL DEVICES MAY BE ADJUSTED TO FIT FIELD CONDITIONS.

STAGE 2



SHEET 1 OF 1

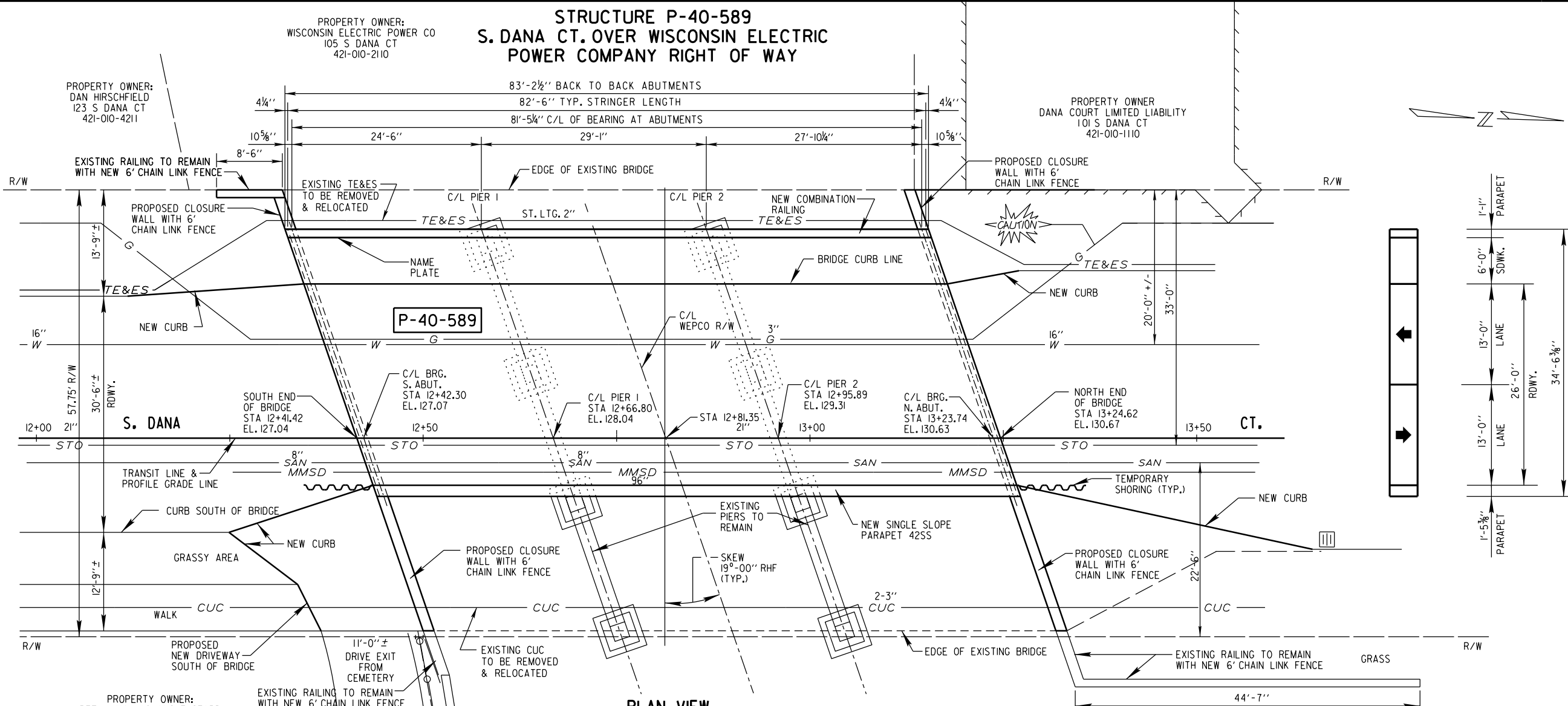
(15)	(18)	(21)	LEGEND DRUMS W/LIGHTS 30' SPACING \odot TYPE III BARRICADES ++ TYPE III BARRICADES W/ SIGN \equiv (13)+(X) SIGNS BANDED TO TRAFFIC CONTROL DEVICE OR POLE \oplus (14)+(X) WORK AREA TEMPORARY ASPHALT CONCRETE BARRIER SECTION CONCRETE BARRIER TAPER SECTION
(16)	(19)	(22)	
(17)	(20)	(23)	

NOTE: ALL SIGNING SHALL BE THE CONTRACTORS RESPONSIBILITY. ALL SIGNS SHALL BE BANDED TO EXISTING UTILITY POLES UNLESS OTHERWISE NOTED. CONTRACTOR RESPONSIBLE FOR COVERING ALL CONFLICTING PAVEMENT MARKINGS. CONTRACTOR RESPONSIBLE FOR COVERING ALL SIGNS THAT ARE IN CONFLICT WITH TEMPORARY TRAFFIC CONTROL SIGNS. TRAFFIC CONTROL DEVICES MAY BE ADJUSTED TO FIT FIELD CONDITIONS.

STRUCTURE P-40-589
S. DANA CT. OVER WISCONSIN ELECTRIC
POWER COMPANY RIGHT OF WAY

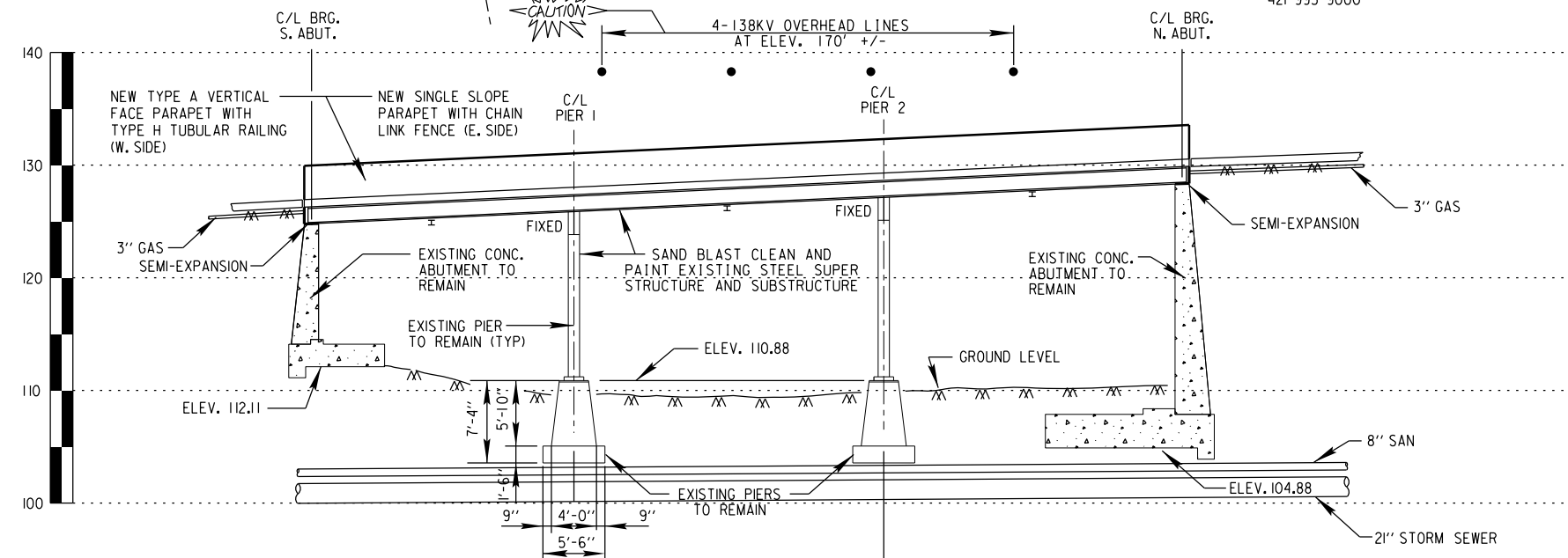
LIST OF DRAWINGS

1. SITE PLAN & ELEVATION
2. SUPERSTRUCTURE CROSS SECTIONS
3. ESTIMATE OF QUANTITIES



PLAN VIEW

3-SPAN STEEL GIRDER BRIDGE
 WIDTH REDUCTION, DECK REPLACEMENT, AND PAINTING



EAST ELEVATION

(NORMAL TO WISCONSIN ELECTRIC POWER COMPANY R/W)

WISDOT BRIDGE OFFICE CONTACT:
 WILLIAM DREHER 608-266-8489

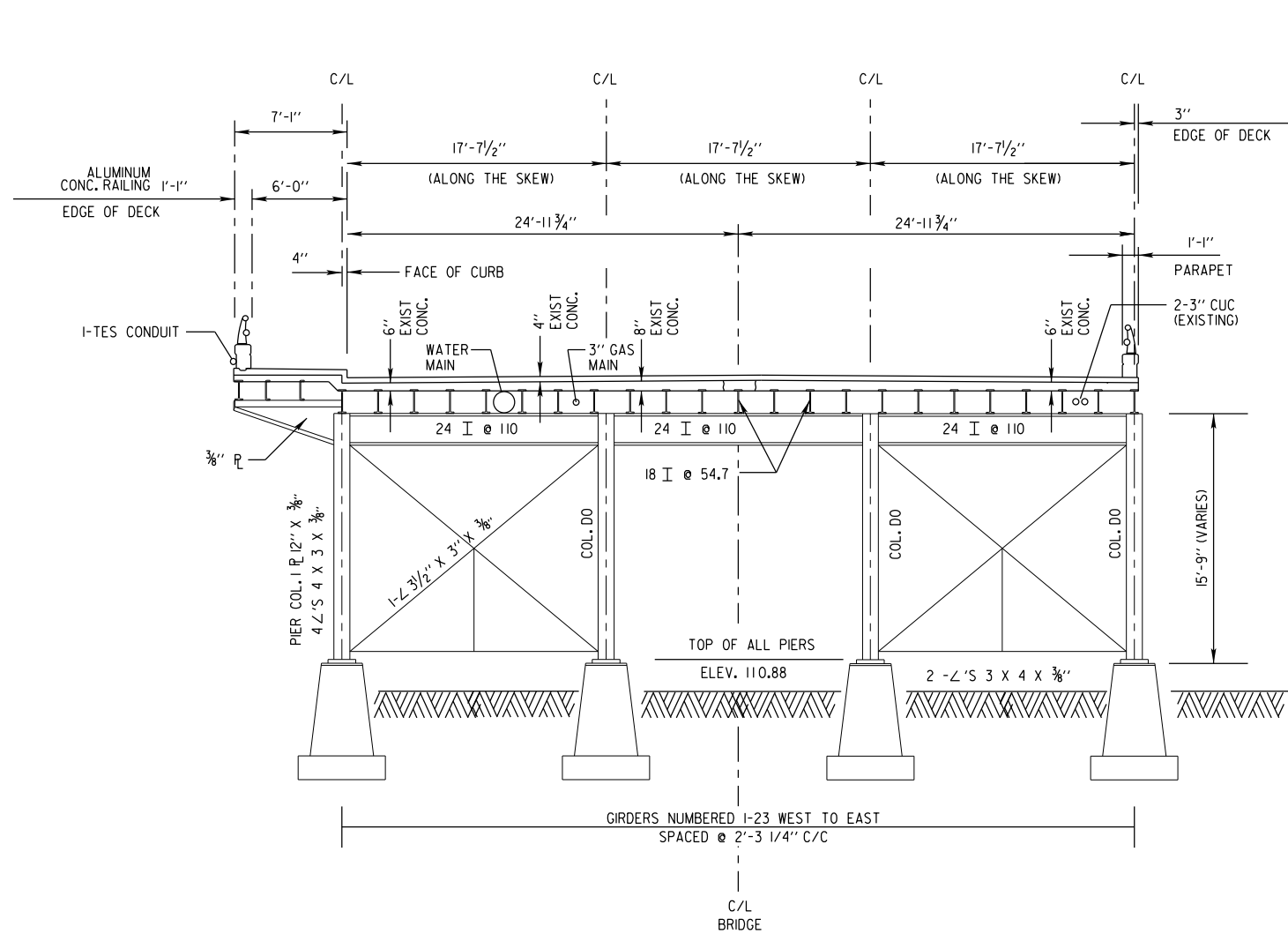
CITY OF MILWAUKEE CONTACT:
 JONATHAN THOMAS 414-286-0463

BENCH MARK:
 HYDRANT, NE ARROW BONNET
 BOLT AT NW CORNER OF
 FAIRVIEW AVE. & DANA CT.
 EL. 134.047

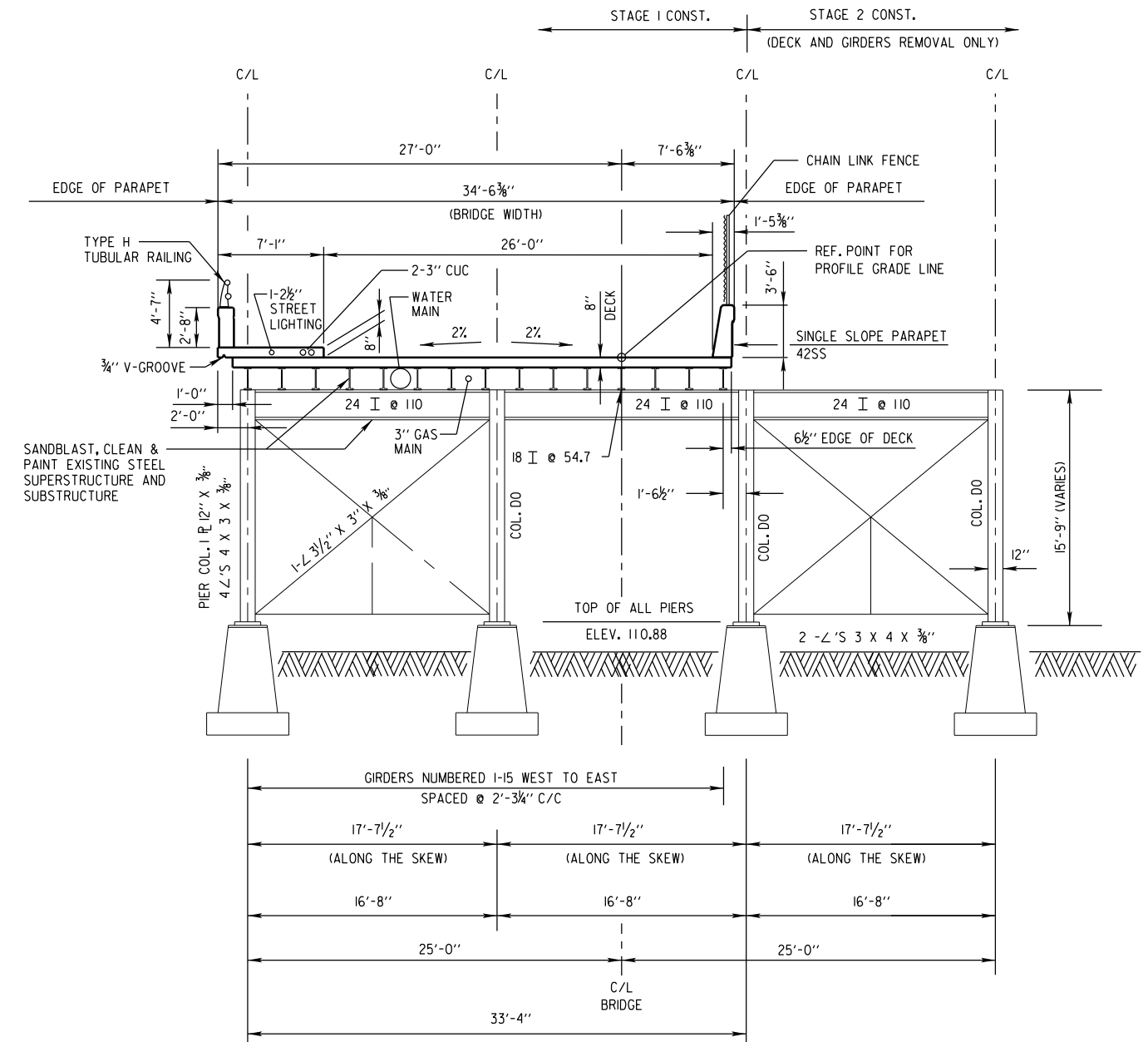
NO.	DATE	REVISION	BY
ORIGINAL PLANS PREPARED BY CITY OF MILWAUKEE DEPARTMENT OF PUBLIC WORKS INFRASTRUCTURE SERVICES DIVISION			
STATE OF WISCONSIN DEPARTMENT OF TRANSPORTATION			
ACCEPTED CHIEF STRUCTURES DESIGN ENGINEER DATE			
STRUCTURE P-40-589			
S. DANA CT. OVER WISCONSIN ELECTRIC POWER COMPANY R/W			
COUNTY	MILWAUKEE	TOWN/CITY/ VILLAGE	MILWAUKEE
DESIGN SPEC.	REHABILITATION N/A		
DESIGNED BY	J.P.H.	DESIGN CR'D.	A.R.
DRAWN BY	M.P.F.	PLANS CR'D.	A.R.
SITE PLAN & ELEVATION			SHEET 1 OF 3

W:\STR\B1102\2021\PREL\1M\02-SECTIONS.DGN

REVISED: 02-06-2020 GJR



EXISTING SECTION THRU BRIDGE LOOKING NORTH



PROPOSED SECTION THRU BRIDGE LOOKING NORTH

NOTE

ALL DIMENSIONS SHOWN ARE NORMAL TO ROADWAY EXCEPT AS INDICATED BY NOTE "ALONG THE SKEW".

NO.	DATE	REVISION	BY
STATE OF WISCONSIN DEPARTMENT OF TRANSPORTATION			
STRUCTURE P-40-589			
DRAWN BY		PLANS CK'D.	
M.P.F.		J.P.H.	
SUPERSTRUCTURE CROSS SECTIONS			SHEET 2 OF 3