

What We Do

The City of Milwaukee Drop Off Centers allow for the safe disposal and recycling of a wide variety of residential waste.

Drop Off Centers are provided as a service to City of Milwaukee residents and those who own property in the City.*

**Proof of residency or property ownership is required for access. Examples include a driver's license, utility bill, or current year rental/ lease agreement.*

Questions?

Call: **(414) 286-CITY (2489)**
(se habla español)

Monday – Friday
7:00 A.M. - 1:00 A.M.

TDD: **(414) 286-2025**

Visit: milwaukee.gov/dropoff

Drop Off Center

Information Guide

Providing safe and convenient disposal and recycling

Guía disponible en inglés y español



Hours of Operation

Summer Hours

April – November*

Tuesday - Sunday 7 AM - 3 PM

Monday CLOSED

Winter Hours

December – March*

Tuesday - Saturday 7 AM - 3 PM

Sunday - Monday CLOSED

*Visit website for exact dates

Holiday Closures

- New Year's Day
- Martin Luther King Jr. Day
- Good Friday & Easter Sunday
- Memorial Day
- Juneteenth
- Independence Day
- Labor Day
- Thanksgiving & Following
- Friday
- Christmas Eve & Day

Locations

North Drop Off Center

6660 N Industrial Road
Milwaukee, WI 53223

(Enter Industrial Rd from Mill Rd at N 64th St.)

South Drop Off Center

3879 W Lincoln Ave
Milwaukee, WI 53215

Fee Guide

Approximately 1 cubic yard (yd³) Free
Passenger Car



Approx. 1 - 3 yd³ \$20
Pickup Truck



Approx. 3 - 6 yd³ \$30
Small Trailer · Tall Truck



Approx. 6 - 10 yd³ \$50
Large Trailer · Small
Box Truck



Approx. 10 - 18 yd³ \$90
Enclosed Trailer ·
Large Box Truck



Brush (6 yd³ +) \$20
Less than 6 yd³ free!



Televisions \$5 each
Maximum of 3



Tires Free
Maximum of 5



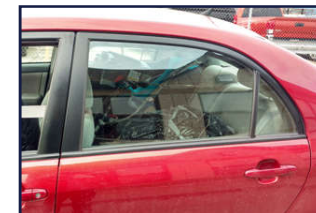
All loads are priced separately, determined by staff, and are non-negotiable. Staff reserves right to deny access depending on vehicle type, load type, or conduct.

Example Drop Offs

Use these examples below to help you gauge what your fee may be:

Passenger car Free

(Load not exceeding one cubic yard- regardless of vehicle size. No TVs or tires.)



Pickup truck with full bed \$20

(Load between one to three cubic yards. No TVs or tires in vehicle.)



Small box truck \$50

(Load between six to 10 cubic yards. No TVs or tires in vehicle.)



Pickup truck with large trailer \$70 total

Pickup truck: \$20
Large trailer: \$50



Fee Guide Update

In order to help offset the cost of disposal, a new fee system is **effective September 3, 2019**. Most categories of recyclables remain free of charge, regardless of quantity. The amount of those separated recyclables included in a vehicle load will not count toward payable load size.

Authorized under MCO 79-14.5