



Our Health. Our Community. Our Future.

## May Monthly News & Updates

**As spring unfolds its beauty, we're reminded of the incredible growth and renewal this season brings.** This month, we're thrilled to share exciting updates and new developments in our mission to uplift our community. Dive into this edition for the latest on our programs, events, and heartwarming stories of transformation. Let's celebrate the showers that have paved the way for May's vibrant blooms and look forward to a season of continued success and inspiration.

**May is Asian American and Pacific Islander Heritage Month**, and we are proud to honor and celebrate the rich cultures, histories, and contributions of these communities in the city of Milwaukee. This month, we recognize the invaluable impact AAPI individuals have had on our city's development and cultural diversity, and we are committed to highlighting their stories and achievements. Join us in celebrating their legacy and fostering a more inclusive and vibrant community.

**Check out stories from Milwaukee's AAPI diaspora [here](#).**

**“Our society would be better if we all were just given the opportunity to dream, to believe, and to pursue the things that make our heart sing.”**

**— Kelly Marie Tran, actor**

**Q3 Action Team Meetings  
Save The date!**

# SAVE THE DATE

## Q3 Action Team Meetings this May!



Please join us at our third round of Action Team Meetings in 2024 to work together to create a plan to work towards our goals and strategies for the next five-year plan!



### Built Environment

**Location: TBD**

Thursday, August 15th, 10:00 am to 11:30 am



### Maternal & Child Health

**LOCATION: TBD**

Thursday, August 15th, 4:00 pm to 5:30 pm



### Safe & Supportive Communities

**LOCATION: TBD**

Tuesday, August 20th, 10:30 am to 12:00 pm



CITY OF MILWAUKEE  
HEALTH DEPARTMENT

#### Built Environment Action Team

Location: TBD

Thursday, August 15th, 10:00-11:30am

Q2 notes [here](#)

#### Maternal & Child Health Action Team

Location: TBD

Thursday, August 15th, 10:00-11:30am

Q2 notes [here](#)

#### Safe and Supportive Communities

Location: TBD

Tuesday, August 20th, 10:30 am to 12:00 pm



2024  
MKE Elevate  
Meeting Schedule

Priority Action Areas:



**BE:**  
Built  
Environment



**MCH:**  
Maternal and  
Child Health



**SSC:**  
Safe and  
Supportive  
Communities

Scan to  
register &  
to learn  
more!



Q1

January

No meetings this month

February

2/8 11:30 am: SC  
2/15 10am: BE  
2/15 4 pm: MCH  
2/20 10:30 am: SSC

March

No meetings this month

Q2

April

4/25 11:30am  
Steering Committee

May

5/16 10am: BE  
5/16 4pm: MCH  
5/28 10:30am: SSC

June

General Member Meeting  
TBD

Q3

July

7/25 11:30am  
Steering Committee

August

8/15 10am: BE  
8/15 4pm: MCH  
8/20 10:30am: SSC

September

No meetings this month

Q4

October

10/24 11:30am  
Steering Committee

November

11/21 10am: BE  
11/21 4pm: MCH  
11/19 10:30am: SSC

December

General Member Meeting  
Date TBD



Visit [milwaukee.gov/elevate](https://milwaukee.gov/elevate) to learn more and RSVP!

## June MKE Elevate Community Meeting

**SAVE**

**MKE  
ELEVATE**

COMMUNITY  
MEETING

JUNE 13TH,  
4-5:30PM



**THE**

**DATE**



1500 E. Park Pl  
Milwaukee

Mark your calendars for the upcoming MKE Elevate Community Meeting! We invite everyone to join us in enhancing the health of our city. The gathering will take place at the Riverside Urban Ecology Center on June 13th, from 4:00 to 5:30 PM. Enjoy community-building activities, tasty food, and networking opportunities.

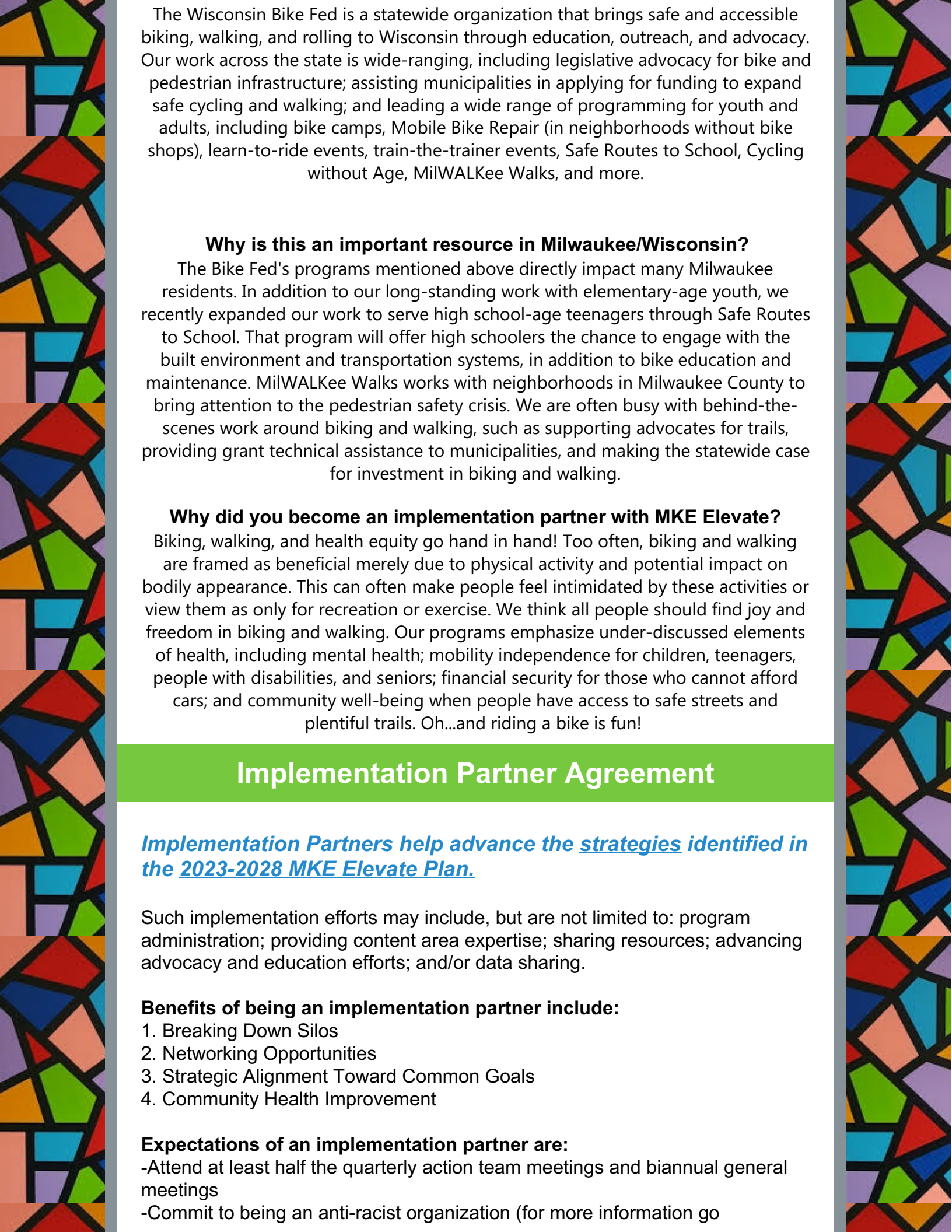
[Register here](#)

(not required but encouraged)

**Implementation Partner Spotlight:  
Wisconsin Bike Fed**



**What is the Wisconsin Bike Fed?**



The Wisconsin Bike Fed is a statewide organization that brings safe and accessible biking, walking, and rolling to Wisconsin through education, outreach, and advocacy. Our work across the state is wide-ranging, including legislative advocacy for bike and pedestrian infrastructure; assisting municipalities in applying for funding to expand safe cycling and walking; and leading a wide range of programming for youth and adults, including bike camps, Mobile Bike Repair (in neighborhoods without bike shops), learn-to-ride events, train-the-trainer events, Safe Routes to School, Cycling without Age, MilWALKee Walks, and more.

### **Why is this an important resource in Milwaukee/Wisconsin?**

The Bike Fed's programs mentioned above directly impact many Milwaukee residents. In addition to our long-standing work with elementary-age youth, we recently expanded our work to serve high school-age teenagers through Safe Routes to School. That program will offer high schoolers the chance to engage with the built environment and transportation systems, in addition to bike education and maintenance. MilWALKee Walks works with neighborhoods in Milwaukee County to bring attention to the pedestrian safety crisis. We are often busy with behind-the-scenes work around biking and walking, such as supporting advocates for trails, providing grant technical assistance to municipalities, and making the statewide case for investment in biking and walking.

### **Why did you become an implementation partner with MKE Elevate?**

Biking, walking, and health equity go hand in hand! Too often, biking and walking are framed as beneficial merely due to physical activity and potential impact on bodily appearance. This can often make people feel intimidated by these activities or view them as only for recreation or exercise. We think all people should find joy and freedom in biking and walking. Our programs emphasize under-discussed elements of health, including mental health; mobility independence for children, teenagers, people with disabilities, and seniors; financial security for those who cannot afford cars; and community well-being when people have access to safe streets and plentiful trails. Oh...and riding a bike is fun!

## **Implementation Partner Agreement**

***Implementation Partners help advance the [strategies identified in the 2023-2028 MKE Elevate Plan.](#)***

Such implementation efforts may include, but are not limited to: program administration; providing content area expertise; sharing resources; advancing advocacy and education efforts; and/or data sharing.

### **Benefits of being an implementation partner include:**

1. Breaking Down Silos
2. Networking Opportunities
3. Strategic Alignment Toward Common Goals
4. Community Health Improvement

### **Expectations of an implementation partner are:**

- Attend at least half the quarterly action team meetings and biannual general meetings
- Commit to being an anti-racist organization (for more information go

to <https://aorta.coop/continuum>)

-Provide an annual progress update and share program data as able

[Sign on as an implementation partner here](#)

## Funding Opportunities

The Wisconsin Department of Health Services (DHS) has posted two funding opportunities for the Sexual Violence Prevention Program. In addition to requesting applications for funding, the program is seeking external grant reviewers to assist in the competitive grant application review. Information on the funding opportunities and becoming a grant application reviewer is below.

### **Economic Supports: Creating Safe and Healthy Communities**

These funds are meant to help organizations implement programs or initiatives that strengthen economic supports and improve pay equity. Employment, stable housing, and financial stability are important protective factors for someone's risk of sexual violence victimization. Proposed initiatives may include policies and programs that work to improve financial stability to reduce the risk factors associated with sexual violence victimization.

[Apply for the Economic Supports funding opportunity](#)

### **Culture is Prevention: Creating Safe and Healthy Communities by Preventing Sexual Violence**

These funds are meant to help organizations create safe environments, encourage positive social norms, and discourage unhealthy social norms to reduce sexual violence. The partners who receive funding will work on primary prevention efforts to make Wisconsin safer.

The deadline to apply for the opportunities is Thursday, June 27, 2024, at 6 p.m., with an anticipated start date of August 1, 2024.

[Apply for the Culture is Prevention funding opportunity](#)

### **Opioid and Methamphetamine Treatment Centers Grant Opportunity**

The Division of Care and Treatment Services is seeking applications for the development and operation of regional opioid and methamphetamine treatment centers to provide comprehensive substance use treatment services for people that present with a primary, secondary, or tertiary diagnosis of opioid use disorder or methamphetamine use disorder.

Applications are due by 11:59 p.m. July 17, 2024.

[View more information about this grant opportunity.](#)

## News and Reports

### **RACISM AND HEALTH EQUITY**

[After George Floyd's death, many declared racism a public health crisis. How much has changed?](#)

In the four years since the murder of George Floyd, cities and counties that declared racism a public health crisis have experienced slow progress and in some cases, opposition.

Read more [here](#)

### **Milwaukee's Commissioner of Health Profile in Shepherd Express**

Interview with Commissioner Totoraitis on his role and how the Milwaukee Health Department is addressing racism as a public health crisis through MKE Elevate.

Read more [here](#)

### **Milwaukee Dems prepare for special showdown**

After a months-long wait, the special election to fill a heavily Democratic state Senate seat in the Milwaukee area is set. Scheduled for July 30, the election will fill the vacancy created by Lena Taylor, a longtime state senator who was appointed by Gov. Tony Evers to a Milwaukee County Circuit Court judgeship in January.

Read more [here](#)

## **BUILT ENVIRONMENT**

### **Wisconsin drops ID checks at federally funded food pantries**

Wisconsin's emergency food pantries can now decide whether to check clients' identification and verify their addresses. By October, the state will require them to stop asking.

Read more [here](#)

### **'This isn't what we wanted': As costs rise, Milwaukee renters forced into difficult situations**

According to U.S. Census Bureau data estimates, the median rent in Milwaukee County in 2022 was approximately \$1,012, up from \$936 in 2021. [Newer estimates](#) show that number to be significantly higher.

Read more [here](#)

## **MATERNAL AND CHILD HEALTH**

### **HHS PROVIDES \$2 MILLION TO SUPPORT MATERNAL, INFANT HEALTHCARE IN WISCONSIN.**

The Children's Service Society of Wisconsin and UniteMKE will receive \$1 million each from the Department of Health and Human Services to improve maternal and infant healthcare.

Read more [Here](#)

## **SAFE AND SUPPORTIVE COMMUNITIES**

### **Mother's Day and mental health; what to know if someone's struggling**

According to the Milwaukee Health Department, people of color experience the highest percentage of mental health challenges – 45% Latino and 33% Black.

Read more [here](#)

### **Some students ask for compromise over police in schools**

It's been nearly six months since police officers were supposed to be stationed at Milwaukee Public Schools campuses under a new state law. While local and state entities work to roll out the mandate, students continue to voice their opposition.

Read more [here](#)

If you or your organizations would like any events shared in this newsletter please email [MKEelevate@milwaukee.gov](mailto:MKEelevate@milwaukee.gov)

### **Vel Phillips Forum: Examining Milwaukee County's Criminal Legal Landscape - From System Entry to Re-Entry**

Professor Lentz, Sarwat Sharif, and Jolynn Woehrer, researchers from the Helen Bader School of Social Welfare at UWM, have completed an in-depth data landscape of Milwaukee's criminal legal system from point of contact with law enforcement, to the courts, to incarceration and re-entry. There are deep racial disparities all over the criminal legal landscape for youth and adults in Milwaukee. These have clear impacts on the community, how public entities treat people, and how decisions are made that impact the residents and resources of Milwaukee. Professor Lentz will provide a brief presentation of his findings, and together with Chief Judge Carl Ashley, City Attorney Evan Goyke, and Shannon Ross, Executive Director of The Community we will explore how those findings impact us and what solutions may exist.

Jun 11, 2024 05:30 PM

HYBRID EVENT - Register here to attend In-Person at Turner Hall or Online  
[Register here](#)

### **Save the Date for the 12th Annual Wisconsin Sexually Transmitted Infection (STI) Summit!**

Health Care Education and Training (HCET) in partnership with the Wisconsin Department of Health Services (DHS) is happy to announce the date and location for the 2024 Annual Wisconsin STI Summit.

2024 Annual Wisconsin STI Summit  
Grand Geneva Resort & Spa  
7036 Grand Geneva Way  
Lake Geneva, WI  
Wednesday, September 25, 2024  
12–5 p.m.  
and  
Thursday, September 26, 2024  
8:30a.m.–4 p.m.

### **2024 Public Health Law Summit: Taking Action on Maternal and Reproductive Health**

September 23 - 25, 2024 | Washington, D.C.  
EARLY BIRD REGISTRATION ENDS JUNE 1  
[networkforphl.org/2024fallsummit](https://networkforphl.org/2024fallsummit) | #PHLS2024  
[REGISTER Here](#)

### **Newsmaker Event with Milwaukee Health Commissioner Mike Totoraitis**

Mike Totoraitis was appointed commissioner of health for Milwaukee in May 2023, the city's sixth health chief in the past six years.

He wants to bolster the health of Milwaukeans by combating racism and addressing social determinants of health like housing, transportation and food

insecurity. The city is also focused on replacing tens of thousands of lead service lines.

Totoraitis will talk about these efforts and more at a Wisconsin Health News Newsmaker event in Milwaukee on June 11.

Registration:

Subscriber: \$40.00

Non-Subscriber: \$50.00

Schedule:

11:45 am - Networking/Registration

12:15 pm - Discussion Starts

1:00 pm - Event Concludes

[Register Here](#)

### **Milwaukee Health Care Partnership Community Health Needs Assessment Survey Open Until August 9th**

#### **What is the CHNA?**

The CHNA is a crucial tool that gathers comprehensive data on the health needs and priorities of our local population. By assessing these needs, we can tailor our health services and resources to better serve our community effectively.

#### **Who is asking for input through the CHNA?**

We complete this assessment in collaboration with our fellow health systems and public health partners to make it as impactful as possible. By doing one survey together, we get more responses, don't over-survey the community, and can better connect around joint solutions.

#### **Why is it important?**

The insights from the CHNA enable us to identify key health challenges and address them through targeted initiatives. It ensures that our health interventions are based on actual community needs, enhancing overall public health outcomes.

#### **Survey link**

The CHNA Health Needs Survey is open until August 9, 2024. To participate, visit [HealthyMKE.com/chna](https://HealthyMKE.com/chna). To collaborate around events or paper survey distribution, please contact [hello@healthymke.com](mailto:hello@healthymke.com)

# SAME GAME DIFFERENT SMOKERS



**May 8, 2024 - June 29, 2024**

**Milwaukee Public Library Washington Park**  
2121 N. Sherman Blvd., Milwaukee, WI 53208  
*Exhibit open during the library's normal operating hours.*





AFRICAN AMERICAN ROUNDTABLE

# YOUTH HANGOUT



COME HANG OUT WITH US FOR A DAY  
OF FUN ACTIVITIES AND LIVELY  
CONVERSATIONS.  
LUNCH PROVIDED.

**FOR AGES 13-24**

**JULY  
10  
11AM-4PM**

UIHLEIN SOCCER PARK  
7101 GOOD HOPE RD  
MILWAUKEE, WI

[aartmke.org](http://aartmke.org)

[BIT.LY/AARTYOUTHANGOUT](https://bit.ly/aartyouthhangout)



ENTRY-LEVEL  
JOBS STARTING  
AT \$34/HR

# WATER JOBS

IN MILWAUKEE

**JUNE 4**  
2 PM to 4 PM

FREE Information Session



JONES ISLAND WATER RECLAMATION FACILITY  
700 EAST JONES STREET | MILWAUKEE, WI 53207



# LIT IS SEARCHING FOR YOU

## CIVICS BLACK HOGWARTS

Black Hogwarts is a summer institute focused on training young activists and organizers in Wisconsin to be the next leaders in our organization and in the community. The program's skill-building and leadership development revolves around four pillars of learning:

- + Intersecting Anti-Oppression Work
- + Civic Engagement
- + Political Education
- + Community Organizing

For questions, please reach out to [crsthabel@litmke.org](mailto:crsthabel@litmke.org)

### Application Deadline

May 31, 2024 at 11:59pm

**Program Starts:** July 15  
10:00 to 3:00pm

**Program Ends:** July 26  
**Program Stipend:** \$500



LEADERS IGNITING  
TRANSFORMATION

2439 N HOLTON STREET, MILWAUKEE, WI, 53212

DIVERSE&RESILIENT'S

# COMMUNITY PROGRAMS

## YOUTH GAME NIGHT

# &

# ICE CREAM SOCIAL ICE CREAM SOCIAL ICE CREAM SOCIAL

MAY 31 6:00-8:00PM

### JOIN OUR DISCORD

Connect with other youth, and join us for movie nights, and game nights!

sounds GAY,

I'M IN!



**CONTACT MIMI:**  
[MKHUN@DIVERSEANDRESILIENT.ORG](mailto:MKHUN@DIVERSEANDRESILIENT.ORG)  
TEXT / CALL (414) 309-2070

### Shape Your Community's Health: Take The Health Needs Survey Now.

**SURVEY CLOSSES August 9th**

Brought To You By:



# Promise Zone Bike Ride

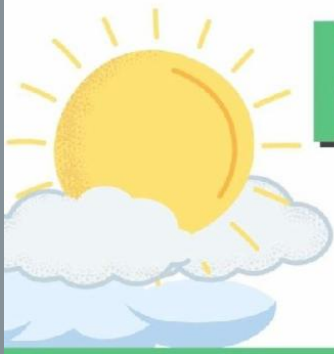
June 1st, 2024

10:00AM



Register today!





# NEIGHBORHOOD CLEAN UP



**JUNE 1ST, 2024 | 1:00-3:00 PM**



**1734 W. GREENFIELD AVE.**



SHERMAN PHOENIX

*the*  
**MAN**  
*the*  
**MYTH**  
*the*  
**LEGEND**

**A FATHER'S DAY CELEBRATION**

COMPLIMENTARY SERVICES INCLUDE:  
MINI MANICURE, FACIALS, MESSAGES,  
FOOD & MOBILE DRIVING RANGE!

**JUNE 10**  
**5:00PM-7:00PM**  
**3536 W. FOND DU LAC AVE.**



**SHERMANPHOENIX.COM/EVENTS**



The Milwaukee Health Department serves as the convener for MKE Elevate, coordinating partners, aligning strategies, and facilitating a steering committee and issue-based action teams.

If you are interested in getting involved, email [mkeelevate@milwaukee.gov](mailto:mkeelevate@milwaukee.gov) for more information.

To learn more visit our website or follow us on social media!

