



Our Health. Our Community. Our Future.

April Monthly News & Updates

Spring is in the air! Welcome to the April edition of MKE Elevate's newsletter. As we all know, April showers bring May flowers, and with them comes a season full of growth and renewal. In this edition, we are excited to share some fresh insights and updates on our journey to elevate our community, from the latest programs and events to inspiring stories of transformation. Let's embrace the rain and look forward to the vibrant blossoms of success ahead!

“I am no longer accepting the things I cannot change. I am changing the things I cannot accept.”
— Angela Y. Davis



Q2 Action Team Meetings

SAVE THE DATE
Q2 Action Team
Meetings this May!



Please join us at our second round of Action Team Meetings in 2024 to work together to create a plan to work towards our goals and strategies for the next five-year plan!



Built Environment

Location: Milwaukee Urban Stables, 143 E Lincoln Ave
Thursday, May 16th, 10:00 am to 11:30 am



Maternal & Child Health

LOCATION: Mitchell Library, 906 W Historic Mitchell St
Thursday, May 16th, 4:00 pm to 5:30 pm



Safe & Supportive Communities

LOCATION: Greater Milwaukee Foundation, 2153 N. Dr. Martin Luther King Jr. Drive, Suite 4000
Tuesday, May 21st, 10:30 am to 12:00 pm



Register for Zoom meetings at
milwaukee.gov/elevate



Built Environment Action Team
Milwaukee Urban Stables, 143 E Lincoln Ave
Thursday, May 16th, 10:00-11:30am
[Registration Link Here](#)
[Q1 notes here](#)
[Q1 Recording Here](#)

Maternal & Child Health Action Team
Mitchell Library, 906 W Historic Mitchell St
Thursday, May 16th, 4:00pm to 5:30pm
[Registration Link Here](#)

[Q1 notes here](#)
[Q1 Recording Here](#)

Safe and Supportive Communities

Greater Milwaukee Foundation, 2153 N. Dr. Martin Luther King Jr. Drive,
Suite 4000

Tuesday, May 28th, 10:30am to 12:00pm

[Registration Link Here](#)

[Q1 notes here](#)

[Q1 Recording Here](#)



2024 MKE Elevate Meeting Schedule

Priority Action Areas:



BE:
Built
Environment



MCH:
Maternal and
Child Health



SSC:
Safe and
Supportive
Communities

Scan to
register &
to learn
more!



Q1	January No meetings this month	February 2/8 11:30 am: SC 2/15 10am: BE 2/15 4 pm: MCH 2/20 10:30 am: SSC	March No meetings this month
Q2	April 4/25 11:30am Steering Committee	May 5/16 10am: BE 5/16 4pm: MCH 5/28 10:30am: SSC	June General Member Meeting TBD
Q3	July 7/25 11:30am Steering Committee	August 8/15 10am: BE 8/15 4pm: MCH 8/20 10:30am: SSC	September No meetings this month
Q4	October 10/24 11:30am Steering Committee	November 11/21 10am: BE 11/21 4pm: MCH 11/19 10:30am: SSC	December General Member Meeting Date TBD



Visit milwaukee.gov/elevate to learn more and RSVP!

June MKE Elevate Community Meeting

Mark your calendars for the upcoming MKE Elevate Community Meeting! We invite everyone to join us in enhancing the health of our city. The gathering will take place at the Riverside Urban Ecology Center on June 13th, from 4:00 to 5:30 PM. Enjoy community-building activities,

tasty food, and networking opportunities. Stay tuned for a formal registration link, coming your way soon!

SAVE

**MKE
ELEVATE**

COMMUNITY
MEETING

JUNE 13TH,
4-5:30PM



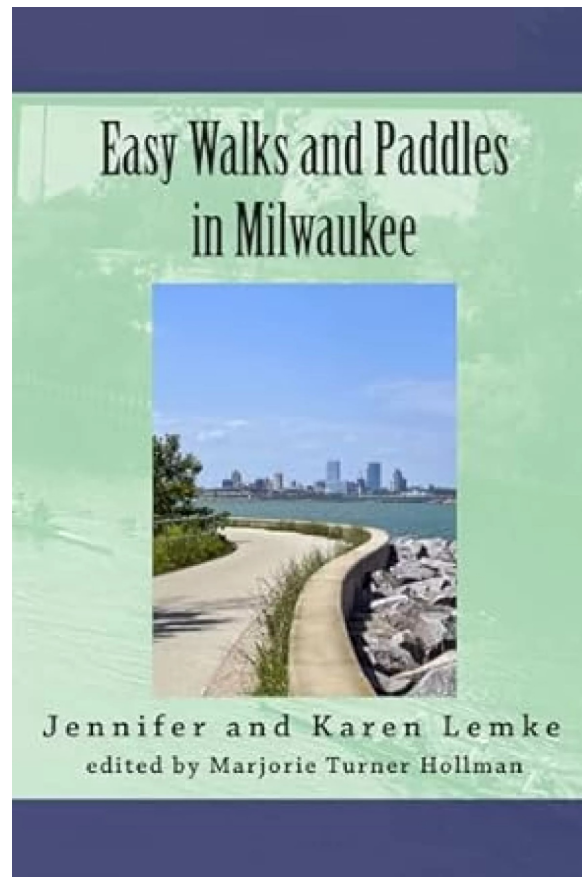
THE

DATE



1500 E. Park Pl
Milwaukee

Implementation Partner Spotlight: Nourishment Ministry



What is Nourishment Ministry?

The Nourishment Ministry is a container for activities and projects supporting each other in Milwaukee. Last summer my sister Jennifer and I had a booth at the Enderis Park Farmers Market to create an open-air "salon," ***a space to sit and talk with neighbors about climate change and the importance of rest and resisting grind culture for health*** (based on the work of Tricia Hersey). We tried different things every week, such as talking about zero-waste restaurants, food waste reduction/composting, increasing veggies/fruits in daily routine, favorite fruit/veggies, picking up trash in the parks, and accessibility. Mid-summer we began

researching the book **Easy Walks and Paddles in Milwaukee** which we published late last year, which follows on the theme of climate-forward recreation and rejuvenation. Other projects afoot include a possible business of gleaning furniture and clothing from storage unit auctions to sell or make available pay-what-you-can.

Here is a link to the interactive map of "Easy Walks and Paddles in Milwaukee":

<https://www.google.com/maps/d/u/1/viewer?mid=1iGL0o7u5hr3lTRtsTmYY9uKKDVMdZGw&ll=43.0228190451741%2C-87.94195715&z=11>

Why is this an important resource in Milwaukee/Wisconsin?

The built environment sometimes serves some peoples' needs, like private vehicle owners, at the expense of other peoples' needs, like people who walk, bike, bus or use mobility supports like motorized wheelchairs. Ideas like Universal Design call for being intentional to support the diverse needs of every *body* including the bodies of our elders, children, teens and caretakers. Milwaukee has a history of racialized separation through deed restrictions, redlining, and intentional disinvesting in certain neighborhoods. We also have a legacy of polluting our rivers and drinking water source. *By telling stories about this history, our resilience despite it, and efforts to rebuild and repair, we celebrate the current successes and dream of possible futures where everyone's needs are met so we all thrive.*

Why did you become an implementation partner with MKE Elevate?

I became an implementation partner with MKE Elevate because I take seriously the public health crisis of racism, entitlement, and impunity which leads to health disparities among us. Telling stories about how our past decisions lead to our present realities helps set the context for creating a better future.

'Save the Date' for these Easy Walks and Rolls in 2024:

- Last Sundays of the month at Lutheran Church of the Great Spirit potluck lunch and Walk & Roll
- July 28 Humboldt Park
- Aug 25 Havenwoods State Forest
- Sep 29 Harborfest/Baby Surgeon Release at Harbor Plaza
- Oct TBD HKE MKE at Urban Ecology Center Riverside
- Milwaukee RiverKeeper Events (milwaukeekeeper.org)
- June 13 MKE River Boat Tour
- June 23 MKE River Sunset Paddle
- July 30 Menomonee River Sunset Paddle
- Aug 11 "Water Unites Us" event at McKinley Marina (MilwaukeeWaterCommons.org)
- Aug 13 Kinnickinnic River Sunset Paddle

Implementation Partner Agreement

Implementation Partners help advance the strategies identified in the 2023-2028 MKE Elevate Plan.

Such implementation efforts may include, but are not limited to: program administration; providing content area expertise; sharing resources; advancing

advocacy and education efforts; and/or data sharing.

Benefits of being an implementation partner include:

1. Breaking Down Silos
2. Networking Opportunities
3. Strategic Alignment Toward Common Goals
4. Community Health Improvement

Expectations of an implementation partner are:

- Attend at least half the quarterly action team meetings and biannual general meetings
- Commit to being an anti-racist organization (for more information go to <https://aorta.coop/continuum>)
- Provide an annual progress update and share program data as able

[Sign on as an implementation partner here](#)

News and Reports

RACISM AND HEALTH EQUITY

[New York Initiative Supporting Babies in Their Early Years Expands to Milwaukee](#)

The program is designed to provide direct cash transfers to pregnant individuals with the focus of building economic security and helping babies in the first two or three years of their life to develop a healthy start," said Gina Stilp, executive director of the Zilber Family Foundation

Read more [here](#)

[Harambee residents develop community-led plan to improve quality of life](#)

Milwaukee's Harambee neighborhood is living up to its name - which means "all pull together" in Swahili - by putting residents' voices at the heart of a new Quality of Life plan, Milwaukee Neighborhood News Service reports.

Read more [here](#)

BUILT ENVIRONMENT

[Stadium Freeway stretch might be converted to a surface road. The public has a chance to weigh in.](#)

The Stadium Freeway's future, which could include converting part of it to a surface street, will be the subject of an open house meeting Tuesday. The public involvement meeting for the Wisconsin Department of Transportation's Reimagining WIS 175 Study will run from 4 p.m. to 7 p.m. at Washington Park Senior Center, 4420 W. Vliet St.

Read more [here](#)

[Community leaders and business owners press for solutions to food insecurity to move Milwaukee forward](#)

Advocates shed light on addressing food insecurity as part of building healthier communities across Milwaukee County. Maurice Wince knows what it is like to grow up and struggle with food coming into the home. He grew up with several siblings in Milwaukee.

Read more [here](#)

CIBC Continues Commitment to Affordable Housing with Thrive

CIBC announced its involvement in the Thrive on King project, a historic adaptive reuse initiative that will transform a former department store building into 90 units of affordable housing in downtown Milwaukee.

Read more [here](#)

Limited Supermarket Access (LSA) Analysis

For over a decade, Reinvestment Fund's Limited Supermarket Access (LSA) Analysis has guided strategic decision-making to increase access to fresh foods for residents living in places with inadequate and inequitable access to grocery stores.

Read [here](#)

MATERNAL AND CHILD HEALTH

Everyone should have access to safe, respectful, and dignified maternal care.

Watch two powerful short films showcasing the remarkable efforts of leaders in the fight for equitable Black maternal healthcare.

Read more [here](#)

SAFE AND SUPPORTIVE COMMUNITIES

The Long Road To End Solitary Confinement in Wisconsin

"The hole" is torture on those confined to it argue opponents at legislative action day.

Read more [here](#)

Overdose deaths from Xylazine on the rise

Overdose deaths involving a powerful animal tranquilizer mixed with fentanyl are soaring in Milwaukee County.

Read more [here](#)

Traffic deaths disproportionately affect Milwaukee County and its Black and brown residents, report shows

A new report issued Thursday reinforced that Milwaukee has the most dangerous roadways in the state and has in recent years experienced a surge in traffic deaths that is largely impacting Black and brown lives.

Read more [here](#)

Priority Action Area Policy Updates

RACIAL AND HEALTH EQUITY

CIVIC ENGAGEMENT

- Amendments to Wisconsin Constitution related to election funding and administration pass. [Read more.](#)

BUILT ENVIRONMENT

FOOD JUSTICE

- Wisconsin to launch pilot summer food assistance program. [Read more.](#)

MATERNAL AND CHILD HEALTH

HEALTHY BIRTH AND HEALTH OUTCOMES

- WIC food packages updated to align with national dietary guidelines, including increasing benefits for fruits and vegetables and increasing access to culturally appropriate foods. [Read more.](#)

SAFE AND SUPPORTIVE COMMUNITIES

MENTAL HEALTH

- New state law allows marriage and family therapists to work in schools. [Read more.](#)

Funding Opportunities

The Nonprofit Management Fund

Accelerate the effectiveness of nonprofits to build strong and vibrant communities. The fund provides capacity building technical assistance grants of up to \$10,000 for governance planning, training and assessment. It is supported by seven philanthropic partner organizations and administered by an adviser, with oversight by a board comprised of representatives from those organizations.

The Nonprofit Management Fund's second grant cycle opens July 3.

Learn more about the opportunity, including eligibility and application guidelines [here](#)

Upcoming Events

If you or your organizations would like any events shared in this newsletter please email MKEElevate@milwaukee.gov

Fentanyl, Inc. and the Opioid Crisis with Author Benjamin Westhoff at Mitchell Street

Tuesday, April 30, 2024 - 6:00 PM to 7:30 PM

This is a FREE event, but registration is required. Boswell Book Company will be onsite with book sales during and after the author talk. A deeply human story, Fentanyl, Inc. is the first deep-dive investigation of a hazardous and illicit industry that has created a worldwide epidemic, ravaging communities and overwhelming and confounding government agencies that are challenged to combat it. "A whole new crop of chemicals is radically changing the recreational drug landscape," writes Ben Westhoff. "These are known as Novel Psychoactive Substances (NPS) and they include replacements for known drugs like heroin, cocaine, ecstasy, and marijuana. They are synthetic, made in a laboratory, and are much more potent than traditional drugs.

[Register here](#)

M.O.M.S.
Mothers of Milwaukee Symposium

Saturday, May 4th

The City of Milwaukee along with First Lady Dominique Johnson present the inaugural M.O.M.S. - Mothers of Milwaukee Symposium on May 4. Join us for an inspirational FREE event packed with transformative workshops and resources. Our amazing lineup of speakers will offer insight and wisdom on the many facets of motherhood.

Come together to meet other mothers for support and make valuable connections. Learn more about enhanced women's health and wellness services. Plus, enjoy complimentary breakfast, lunch, and giveaways.

WHEN: May 4, 2024 from 7:30 a.m. to 3 p.m.

WHERE: American Serb Hall Banquet, 5101 W. Oklahoma Avenue

FREE ADMISSION: Pre-registration is required

Reasonable accommodations provided for persons with disabilities upon request. Call 414-286-3475 or email ADACoordinator@milwaukee.gov.

[Register Here](#)

Black Birth Maternal & Infant Health Symposium

Saturday, May 11th

The 3rd annual Black Maternal Health Symposium, presented by GE HealthCare, stands as a pivotal platform addressing critical health disparities and alarming rates of Black maternal and infant mortality. This event convenes the state's leading maternal healthcare professionals and community advocates to facilitate a unique learning experience and promote interdisciplinary collaborations.

[Register Here](#)

Naloxone Action Planning

Tuesday, May 14

Held via WebEx (8:30 a.m. to 12:30 p.m.)

The Wisconsin Department of Health Services (DHS) and UW-Whitewater's Center for Inclusive Transition, Education & Employment (CITEE) present this opportunity to learn more about expanding naloxone distribution in Wisconsin communities.

This event is completely online, free to attend, and free Continuing Education Units (CEUs) will be available upon completion. Please allow at least 30 days to receive your CEU certificate after the completion of the event and the post-event evaluation.

[Register Here](#)

DHS Opioids, Stimulants, and Trauma Summit

May 7-9

The Opioids, Stimulants, and Trauma Summit hosted by Department and Health Services is an annual event that highlights prevention, harm reduction, treatment, and recovery strategies related to opioids,

stimulants, and trauma. All people with an interest in building healthy communities are invited to attend.

[Register Here](#)

Maternal Health Gathering May 15

The Maternal and Infant Mortality Prevention Unit would like to invite you to a virtual gathering on May 15, 2024 from 10 a.m.–12:30 p.m.

The event is for those in Wisconsin working in maternal health and related fields, including equity and racial justice. We want to hear from you and learn what is happening in your communities and share important, relevant news.

[Register Here](#)

OPEN TO HEALTH DEPARTMENT CLIENTS
AND CITY OF MILWAUKEE RESIDENTS

MOM-2-MOM

GROUP FOR ALL EXPECTING AND PARENTING
MOMS IN MILWAUKEE



**THIRD TUESDAY OF EACH MONTH
FROM 3:30-5:00 P.M.**

Southside Health Center, 1639 S. 23rd Street - 1st floor Multipurpose Room

March 19

Stress Free
Painting

April 16

FREE Spring Rummage
10AM - 4PM

May 21

Mother's Day Mugs
and Muffins

Questions or inquiries, please contact Katie Lopez at (414) 758-0661 or kalopez@milwaukee.gov

Mom-2-Mom is a safe, supportive, judgment free place for
moms to connect and talk about what matters to them.

BABIES AND CHILDREN ARE WELCOME.

Activities, Snacks and more!

Mom led, informal discussions. Topics to include pregnancy, labor and delivery, breastfeeding, child development, parenting challenges, stress management, school, life stressors, mental health/wellness, resources and connections (childcare, WIC, cribs, car seats, public benefits, etc.).



CITY OF MILWAUKEE
HEALTH DEPARTMENT

milwaukee.gov/health

— FOCUS ON FATHERS —

A Dad-Driven Support Group



First Thursday of each month, 5:30 – 7:30 PM

March 7th • April 4th • May 2nd • June 6th

Office of African American Affairs

4828 W. Fond du Lac Ave.

Event contact: David Comer // dacome@milwaukee.gov // 414-286-6636



CITY OF MILWAUKEE
HEALTH DEPARTMENT

milwaukee.gov/DAD

Grab & Go



Owen's Place

4610 W Fond Du Lac Ave
Milwaukee, WI 53216

March 27th, 2024

April 24th, 2024

May 29th, 2024

3:00 - 5:00 p.m.



What's Included:

Information on available programs and community resources, prevention materials, books, journals, to-go snacks, gun locks and pill disposal kits, various sized clothing and a variety of other items.

FREE Event.

Please bring a bag or two.



RNC 2024 Community Voices



Join us for a

CHILDREN'S MENTAL HEALTH CELEBRATION!

**COME &
ENJOY**



**FREE
ENTRY**

THURSDAY MAY 9 3-6 PM

Join us in celebrating children's mental health, including a root beer float station, resources & activities for youth and families, free food, a live DJ and more!

**OWEN'S PLACE
4610 WEST FOND DU LAC AVE.
MILWAUKEE, WI 53216**

owen's
place



MILWAUKEE COUNTY
DEPARTMENT OF
HEALTH & HUMAN
SERVICES

EMBODY
YOGA



FREE

Yoga Classes For Teen Girls

Get More Info & Sign Up At:
[Embodyyogamke.com/teenyoga](https://embodyyogamke.com/teenyoga)



MILWAUKEE COUNTY
DEPARTMENT OF
HEALTH & HUMAN
SERVICES



COMPREHENSIVE HIV & STI SCREENING

Wednesday 5/1/24

12:30 PM	Available
1:15 PM	Available
2:00 PM	Available
2:45 PM	Available

Comprehensive Screening:

- Rapid HIV test
- Rapid syphilis test
- Gonorrhea test
- Chlamydia test
- PrEP & PEP Consultation
- \$20 gift card, if eligible



To Book an Appointment:
Call us at 414-390-0444 Ext 1



2439 N Holton St
Milwaukee, WI 53212

Free Live Learning Sessions

Learn about new resources to help connect individuals and organizations with **mental health and substance use services in Milwaukee County**. These sessions will discuss resources, their usage, sharing methods, and gather feedback for improvements.

Session Dates & Times



Tuesday, April 30, 2024

12:00PM - 1:00PM



Wednesday, May 1, 2024

9:00 AM - 11:00 AM



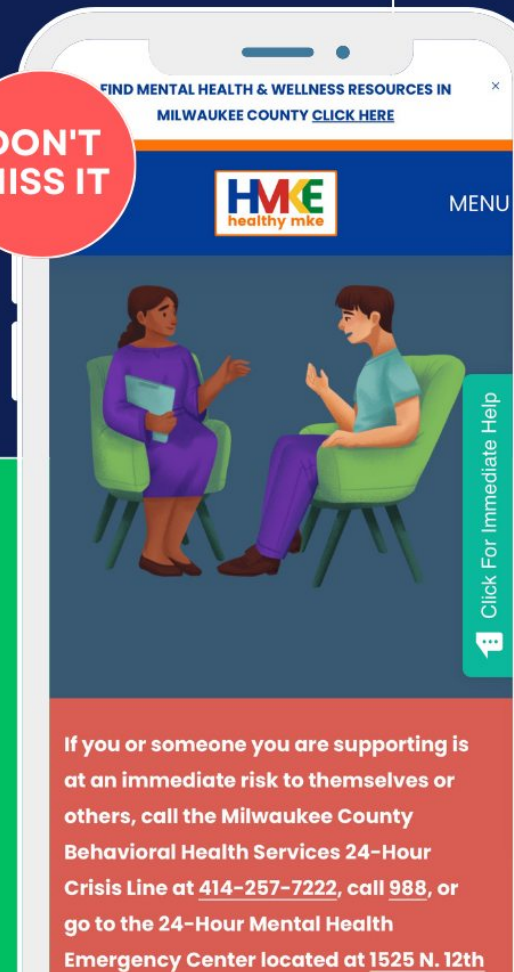
Thursday, May 2, 2024

12:00PM - 1:00PM

Register Today

HealthyMKE.com/learn

DON'T MISS IT



If you or someone you are supporting is at an immediate risk to themselves or others, call the Milwaukee County Behavioral Health Services 24-Hour Crisis Line at [414-257-7222](tel:414-257-7222), call [988](tel:988), or go to the 24-Hour Mental Health Emergency Center located at [1525 N. 12th](#)



The Milwaukee Health Department serves as the convener for MKE Elevate, coordinating partners, aligning strategies, and facilitating a steering committee and issue-based action teams.

If you are interested in getting involved, email mkeelevate@milwaukee.gov for more information.

To learn more visit our website or follow us on social media!

