



 City of Milwaukee

VIOLENCE PREVENTION RESOURCE GUIDE 2025



Presented by



 **WELCOME TO THE MKE ELEVATE SAFE AND SUPPORTIVE COMMUNITIES ACTION TEAM VIOLENCE PREVENTION RESOURCE GUIDE.**



This guide was developed to support our collective mission, a Milwaukee where all people are thriving in safe healthy and equitable neighborhoods free from oppression. Accomplished by aligning strategies and building power, partnerships, access to resources, and opportunities for collective advocacy in community-identified priority areas. As part of the MKE Elevate initiative, Milwaukee's community-driven health improvement plan, our Action Team focuses on addressing the root causes of violence, promoting healing, and strengthening community relationships.



Within this resource guide, you will find tools and community-based solutions that align with our shared priorities. Whether you are a community member or organization, this guide is designed to equip you with information and connections to help foster environments where everyone can feel safe and supported.

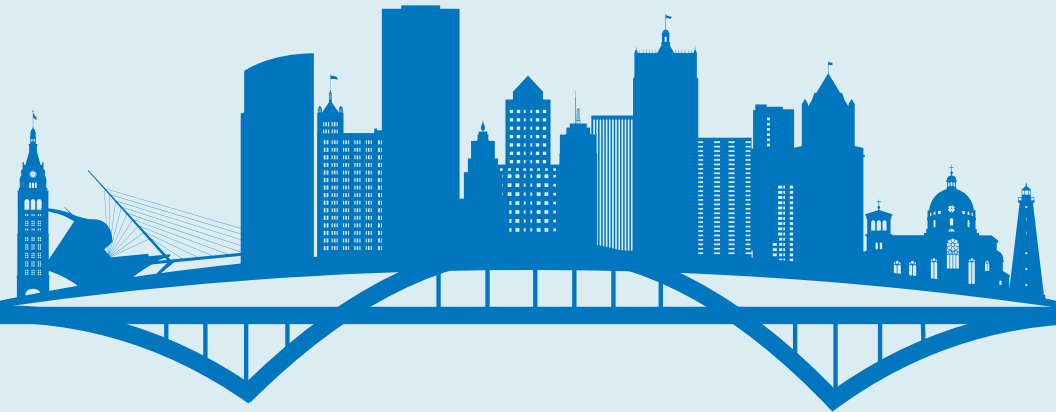




INDEX



Community Violence Intervention	P.4
Hospital Response Teams	P.17
Mental Health Services	P.19
Mentoring Services	P.21
Supportive Services	P.27
Housing Support Services	P.43
Behavioral Health Services & Helpline	P.45
Educational Trainings	P.47
Gun Lock & Safe Storage Resources	P.49





Community Violence Intervention




Milwaukee County Department of Health and Human Services (DHHS) Community Violence Intervention Initiatives

Contact: Vaynesia Kendrick
vaynesia.kenrick@milwaukeecountywi.gov
CVI Program Manager, Children, Youth and
Family Services



Milwaukee County DHHS Credible Messenger Program



Milwaukee County DHHS Credible Messengers is a collective of six contracted agencies: 414LIFE, GLOW 414, Milwaukee Christian Center, Running Rebels Community Organization, WestCare WI, and Youth Advocate Programs. The Credible Messengers provides transformative mentoring to youth in the justice system and those at risk to prevent recidivism and promote positive development. **Eligibility Requirements:** Youth and young adults ages 14-24 in Milwaukee involved in the justice system or at risk of involvement.



Milwaukee County DHHS **Credible Messenger Agencies**



414LIFE Violence Interruption Program

Contact: David Sinclair, Outreach Supervisor

Email: dinsclair@mcw.edu

Address: 2153 N Dr Martin Luther King, Jr Dr,
Milwaukee, WI 53212

Phone: (414) 439-5525



GLOW 414

Contact: Mickell Dent, Founder

Email: info@glow414.org

Address: 6333 N Green Bay Rd, Glendale, WI 532

Phone: (414) 218-1001



Milwaukee Christian Center

Contact: Fabiana Guzman, Advance Peace
Strategy Manager

Email: fguzman@mccwi.org

Address: 807 S 14th St, Milwaukee, WI 53204

Phone: (414) 628-4405



Running Rebels Community Organization

Contact: Rod Mitchell, After-care Coordinator

Email: rod.mitchell@runningrebels.org

Address: 225 W Capitol Dr, Milwaukee, WI 53212

Phone: (414) 264-8222



WestCare Wisconsin

Contact: Travis Landry, Regional Vice President

Email: travis.landry@westcare.com

Phone: (414) 239-9359

Contact: Chanita Lewis, CM Program Director

Email: Chanita.lewis@westcare.com

Phone: (414) 305-2842

Address: 335 W Wright St, Milwaukee, WI 53212



Youth Advocate Programs Inc.

Contact: Chaz Fortune, Director

Email: czfortune@yapinc.org

Address: 4465 N Oakland Ave, Shorewood,
WI 53211

Phone: (414) 335-7811





Milwaukee County DHHS Advance Peacemaker Fellowship

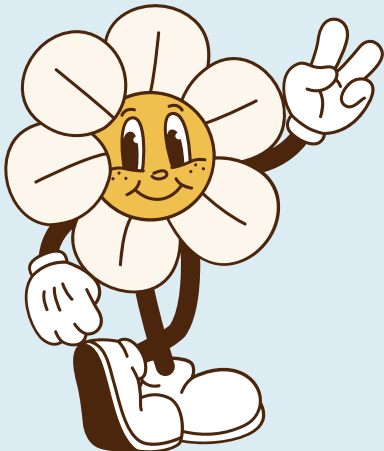
The centerpiece of Advance Peace is a high-touch and personalized 18-month Peacemaker Fellowship®. The Advance Peace model is a violence interruption model that invests in the development, health, and well-being of people at the center of gun violence in urban communities. Advance Peace engages the small number of individuals at the center of gun violence in one-on-one, personalized fellowships to build new opportunities and break the cycle.

Contact Information: Fabiana Guzmán, Advance Peace Strategy Manager

Email: Fguzman@mccwi.org

Website: <https://mccwi.org/community-violence-intervention/>

Eligibility Requirements: Youth and young adults ages 14-24.





Milwaukee County DHHS Community Violence Intervention Housing Assistance

Provide families with housing navigation support, assist with housing search and placement for both short- and long-term needs, and connect families to resources to maintain housing stability.

Contact Information: Hannah Echols, Community Intervention Specialist

Email: hannah.echols@milwaukeecountywi.gov

Eligibility Requirements: Youth-justice involved families and families in the community impacted, displaced, and targeted by community violence.



Milwaukee County DHHS Trauma Response Team

The Trauma Response Team is a free and voluntary service for children who have witnessed or been exposed to potentially traumatic events such as serious accidents, sudden death, shootings, violence in school or the community, or domestic violence.

Contact Information: Rolanda Jones, Lead Psychiatric Crisis Worker

Email: rolanda.jones@milwaukeecountywi.gov

Website:

<https://county.milwaukee.gov/EN/DHHS/Children-and-Young-Adults-Services>

Eligibility Requirement: Youth in Milwaukee County exposed to trauma, ages 6-17 years old.





City of Milwaukee Office of Community Wellness and Safety (OCWS)

The Office of Community Wellness and Safety addresses various forms of violence, including domestic and intimate partner violence, sexual assault, child abuse, human trafficking, and community violence. They offer resources and programs aimed at prevention and support for affected individuals and communities.

Contact information: Quinn Taylor, Community Violence Prevention Coordinator

Phone: (414) 286-5417

Website: <https://city.milwaukee.gov/doa/Services-and-Programs/staysafe>

Eligibility requirements: Services are available to all residents of Milwaukee seeking assistance related to violence prevention and support.





Milwaukee ReCast

The ReCast grant helps build stronger, healthier communities by expanding the mental health workforce, strengthening partnerships between organizations to better support families, raising mental health awareness, connecting individuals to evidence-based services, and offering trainings that promote prevention, resilience and wellness

Crisis Response: Have you or someone you know been impacted by violence?

The Office of Community Wellness and Safety is here to support you! OCWS receives notifications from crisis response partners and the community, connecting individuals and families impacted by violence to free mental health and wellness support. Our network of culturally responsive clinicians and healers offer compassionate care to support healing and resilience.

Contact information: Julien Phifer, Crisis Response Coordinator

Mobile Phone: (414) 758-9807

Office Phone: (414) 286-3798





Critical Response Team

Specialized individuals deal with critical incidents that involve gang-based violence and retaliatory violence. Their specialized skill set allows them to mediate conflicts between gangs and pain-based groups across the city as well as volatile incidents involving missing persons and interpersonal violence.

Contact information: Cornelius Hall, Violence Intervention Specialist

Phone: (414) 286-5468

Contact information: Darrell Lofton, OCWS Community Manager

Email: dlofto@milwaukee.gov

Eligibility requirements: Identified areas accounting for high percentages of Milwaukee's shooting incidents.





414LIFE

The 414Life concept is a program designed by the City of Milwaukee, Office of Community Wellness and Safety and managed by the Medical College of Wisconsin. Guided by the understanding that gun violence is a public health issue, the mission of the 414Life Program is to interrupt and reduce violence culturally centered disease control and behavior change method. We are trained, credible professionals from the community who prevent shooting by using a 3-prong approach: Interrupt Transmission (Prevent Retaliations, Mediate Conflicts and Keep Conflict Cool or Resolved), Reduce Highest Risk (Access Highest Risk, Change Behaviors, Provide Treatment), Change Community Norms (Respond to shootings, Organize Community, Spread Positive Norms).

Contact information:

Lynn Lewis, Program Director

Email: vlewis@mcw.edu

Program Components:

Violence Interruption, Outreach,
Community Engagement,
Hospital Response

Scan QR code for website:





Promise Keepers

The focus of Promise Keepers is on primary prevention by engaging residents and business owners in our Promise Zone areas. Collectively, this initiative brings together trained credible members of these neighborhoods to support and bring resources to communities in need. Promise Keepers provides community healing after a traumatic event by canvassing, neighborhood clean-ups, community pop-up events.

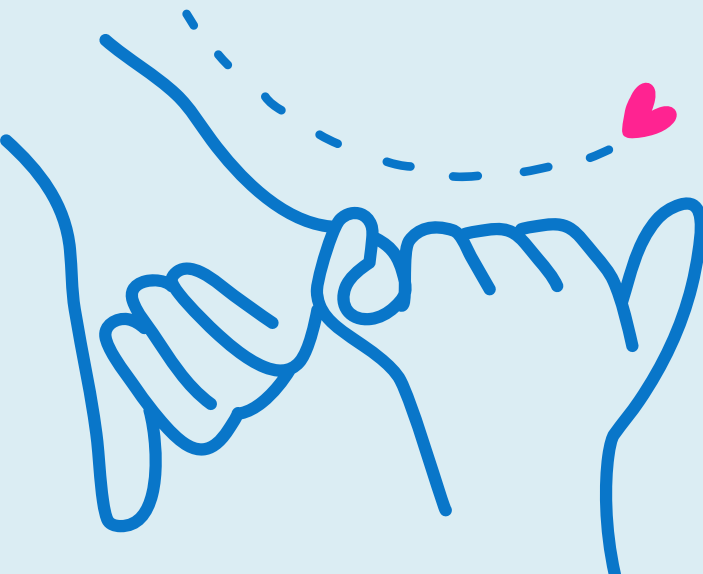
Contact information: Quinn Taylor, Community Violence Prevention Coordinator

Phone: (414) 286-5417

Contact Information: Darrell Lofton, OCWS
Community Manager

Email: dlofto@milwaukee.gov

Eligibility requirements: Identified areas accounted for high percentages of Milwaukee's shooting incidents.





* **Community Taskforce**

ComForce MKE is a group of community/resident/youth leaders, activists, faith-based orgs, elected, and others striving toward peace, unity, and progress in Milwaukee.

Contact information: Vaun Mayes, Founder

Phone: (414) 395-0552

Email: teamcomforcemke@gmail.com

Email: comforcemke@gmail.com

Facebook:

<https://www.facebook.com/CommunityTaskForceMKE/>

Eligibility requirements: Services are available to individuals and communities in Milwaukee.





Safe and Sound Inc.

To unite residents, youth, law enforcement and community resources to build safe and empowered neighborhoods.

Contact information: DJ Johnson, Associate Director

Phone: (414) 220-4780

Email: dj@safesound.org

Email: info@safesound.org

Address: 4422 W Leon Terrace, Milwaukee, WI 53216

Website: <https://safesound.org/>

Operation hours: Mon - Fri 9:00 a.m. - 5:00 p.m.

Eligibility requirements: Youth, families and the community.



The Asha Family Services, Inc.

Focuses on domestic violence prevention and intervention within Milwaukee's African American community. Offers crisis intervention, counseling, advocacy, and support groups. Provides Credible Messenger Programming for youth.

Contact information: Betty Brown Drake, Office Manager

Phone: (414) 252-0075

Email: staff@ashafamilyservices.org

Address: 3719 W Center St, Milwaukee, WI 53210

Website: <https://ashafamilyservices.org/contact-us>

Eligibility requirements: Primarily for African American individuals and families affected by domestic violence.





Uniting Garden Homes, Inc.

Uniting Garden Homes, Inc. is a neighborhood-based organization committed to reducing violence and fostering community cohesion in the Garden Homes area. They engage residents through initiatives such as neighborhood patrols, community events, and youth mentorship programs to create a safer environment. Neighborhood-based organization aiming to reduce violence and foster community cohesion in the Garden Homes area. Provides Credible Messenger Programming for youth.

Contact information: Janet Butler, Secretary

Phone: (414) 438-9404

Address: 4201 N 27th St, Milwaukee, WI 53216

Website: <https://www.ughinc.org/>

Operation hours: Mon - Fri 8:00 a.m. - 8:00 p.m.,
Sat 9:00 a.m. - 7:00 p.m., Sun 9:00 a.m. - 8:00 p.m.

Eligibility requirements: Open to Garden Homes residents and surrounding communities.





Hospital Response Teams



414LIFE Violence Interruption Program

414LIFE is a community-driven violence interruption program that treats gun violence as a public health issue. They engage community members as "violence interrupters" to mediate conflicts and prevent retaliatory violence. The program also provides support to survivors of gun violence and their families.

Contact information: Mark Briggs, Hospital Responder Supervisor

Phone: (414) 955-8990

Email: 414LIFE@mcw.edu

Website:



Eligibility requirements: Services are available to survivors of gun violence and their families.





Children's Wisconsin Project Ujima

Project Ujima aims to stop the cycle of violent crimes by providing support to youth victims of violence and their families. Services include crisis intervention, advocacy, case management, and connections to community resources.

Contact information: Brooke Cheaton, Project Ujima Manager

Phone: (414) 266-2557

Website: <https://childrenswi.org/childrens-and-the-community/families-and-clients/family-support-services/violence-prevention-counseling>

Eligibility requirements: Services are available to youth victims of violence and their families in the Milwaukee area.





Mental Health Services



Milwaukee County DHHS Access Clinics

Mental health and substance use assessment, therapeutic check-ins, peer support services, medication evaluation, linkages to long-term behavioral health and community resources.

Location: Access Clinic East located at Outreach Community Health Center

Address: 210 W Capitol Dr, Milwaukee, WI 53212

Phone: (414) 257-7665

Location: Access Clinic North located at Milwaukee Health Services

Address: 8200 W Silver Spring Dr, Milwaukee, WI 53218

Phone: (414) 257-5190

Location: Access Clinic South located at Sixteenth St. Clinic

Address: 1635 W National Ave, Milwaukee, WI 53204

Phone: (414) 257-7900

Website:

<https://county.milwaukee.gov/EN/DHHS/BHD/ACCESS>

Operation hours: Mon - Fri 8:30 a.m. - 4:30 p.m.

Eligibility Requirements: Must be a Milwaukee County resident, aged 18 or older, without a current counselor or prescriber, and uninsured, underinsured or insured and in crisis





Milwaukee County DHHS Wraparound Milwaukee - Children's Community Mental Health Services

Wraparound Milwaukee provides individualized, strength-based care coordination for children and youth with serious emotional or mental health needs. The program aims to keep young individuals in their homes or community care by offering comprehensive support services.

Contact information: Brian McBride, Wraparound Milwaukee Director

Resource & Referral Line: (414) 257-7607

Milwaukee Mobile Crisis: (414) 257-7222

Milwaukee County Mental Health Clinic: (414) 257-7610

Website:

<https://county.milwaukee.gov/EN/DHHS/BHD/Wraparound--Milwaukee>

Eligibility requirements: Youth must be 23 years or younger, have a mental health diagnosis, reside in Milwaukee County, and be involved with two or more systems such as child protective services, juvenile justice, mental health services, social services, or special education.



Milwaukee Mental Health Emergency Center

The emergency center offers 24/7/365 crisis mental health assessment, stabilization, treatment and transition care management for children, adolescents and adults.

Phone: (414) 966-3030

Address: 1525 N 12th Street, Milwaukee, WI 53205

Website: <https://mentalhealthmke.org/about/>





Mentoring Services



Big Brothers Big Sisters of Metro Milwaukee

Community Mentorship, Children and volunteer mentors meet 2-4 times per month for activities and outings throughout Metro Milwaukee. High school mentorship: High school youth are matched with mentors who have successfully navigated their post-high school journeys, to promote college and career readiness. School-based mentorship: Students meet with volunteer mentors weekly during or after the school day at one of our partners elementary or middle school locations for educationally focused mentoring.

Phone: (414) 258-4778

Address: 788 N Jefferson St, Suite 600,
Milwaukee, WI 53202

Email: info@bbbsmilwaukee.org

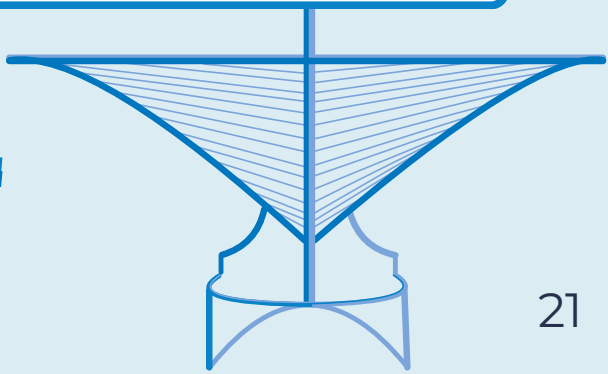
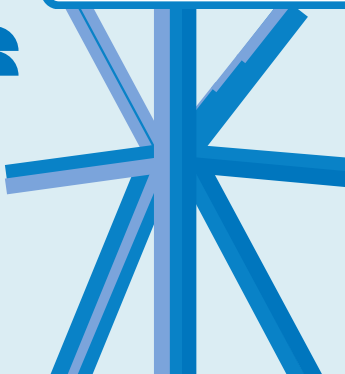
Website:

<https://www.bbbsmilwaukee.org/programs/>

Enroll: <https://www.bbbsmilwaukee.org/enroll/>

Operation hours: Mon - Fri, 8:30 a.m. - 5:00 p.m.
and by appointment.

Eligibility requirements: Children and teens
facing adversity, ages 6-18 years.





Black and Latino Male Achievement (BLMA)

Provides mentoring for high school students as well as the BLMA Buddies program for 4th/5th grade male students of color to promote Black and Latino male mentorship and leadership to support academic and personal development. Focuses on supports specifically tailored to increase success for Black and Latino males in Milwaukee Public Schools.

Contact information: Nathaniel Deans, Director

Phone: (414) 777-7863

Email: blma@milwaukee.k12.wi.us

Website:

https://mps.milwaukee.k12.wi.us/en/District/About-MPS/Departments/Office-of-the-Superintendent/Black-and-Latino-Male-Achievement/Mentoring.htm?utm_source=chatgpt.com

Eligibility requirements: High school students and 4th - 5th grade male students of color enrolled in Milwaukee Public Schools.





New Hope Youth and Family Services

Provides mentoring for youth, family services, community resources, and community events for the entire family.

Contact information: Tierra Lee, Program Director

Phone: (414) 459-1934

Address: 3248 W Brown St, Milwaukee, WI 53208

Email: rlee.newhope@gmail.com

Website: <https://new-hope-youth-and-family-services.ueniweb.com/>

Operation hours: Mon - Thurs 9:00 a.m. - 8:00 p.m.

Eligibility requirements: Youth ages 5-17 years and families.



Pearls for Teen Girls Inc

PEARLS focuses on developing core skills for their personal and professional growth, opportunities to prepare girls for college and career life, and many more enriching activities that build confidence, healthy relationships, and dreams.

Contact information: Jasmine Deacon, Director of Program Services

Email: jasmine.deacon@pearlsforteengirls.com

Phone: (414) 265-7555

Address: 1805 N Martin Luther King Jr Dr, Milwaukee, WI 53212

Website: <https://www.pearlsforteengirls.com/>

Operation hours: Mon - Fri 9:00 a.m. - 5:00 p.m.

Eligibility requirements: Girls 5th-12th grade.





Running Rebels Community Organization

Running Rebels operates a preventative Community Mentoring Program to address the social, emotional, and educational needs of low-income, primarily African American, youth ages 12-17 years. The goal is to provide participants with the skills, resources, and support they need to make positive life choices that lead to educational and workforce success. Provides Credible Messenger Programming for youth. Contact information: Stacey Lindsay, Sr. Director of Programming

Phone: (414) 264-8222

Email: Stacey.Lindsay@RunningRebels.org

Email: info@runningrebels.org

Location: Central Location

Address: 1300A W Fond du Lac Ave A,
Milwaukee, WI 53205

Operation hours: Mon - Fri 10:00 a.m. - 7:00 p.m.,
Saturday 12:00 p.m. - 3:00 p.m.

Location: East Location

Address: 225 W Capitol Dr, Milwaukee, WI 53205

Operation hours: Mon - Fri 9:00 a.m. - 7:00 p.m.

Website: <https://runningrebels.org/>

Eligibility requirements: Youth ages 12-17 years.





ACHIEVE MKE YOUTH PROGRAM

We empower teens and young adults by amplifying their voices, supporting their educational and career goals, and prioritizing their safety and well-being. Services: Care coordination and support service navigation and connection, Educational and vocational support and services. Life skill development, connection and support. Achieve MKE offers individual trauma informed wrap around services. You can follow us on Instagram, facebook. At AchieveMKE, we champion systemic change and foster lasting community connections to drive positive, lifelong outcomes.

Contact information: Jenell Loreck, MSW, CAPSW | Director of Community Programs

Phone: (414) 477-0076

Address: 315 W. Court St. Milwaukee

Email: Jloreck@norriscenter.org

Website: [AchieveMKE@norriscenter.org](https://www.achievemke.org)

Eligibility requirements: (Ages 15-25)





TRUE School

True School is an after-school program in Milwaukee that targets middle- and high school-aged youths. It offers non-traditional arts courses, including music production and how to be an MC or DJ. The program aims to engage youth in social justice and humanities education, leadership, and workforce development.

Contact information: Fidel Verdin & Shalina S. Ali, Co-Executive Directors

Phone: (414) 445-9079

Address: 161 W Wisconsin Ave, Suite 1000 (Lower Level), Milwaukee, WI 53203

Email: info@trueskool.org

Website: <https://www.trueskool.org/>

Eligibility requirements: Middle- and high school-aged youths and young adults





Supportive Services



Boys and Girls Club of Greater Milwaukee

Youth-serving agency in the greater Milwaukee area providing academic and recreational programming.

Contact information: Varies by location

Phone: (414) 267-8100

Address: 1558 N 6th St, Milwaukee, WI 53212

Website: <https://www.bgcmilwaukee.org/>

Eligibility requirements: Youth ages 4-18 years in the city of Milwaukee.



Fathers Making Progress

Fatherhood programing. (12) week courses are facilitated by real fathers from the community. Support groups for fathers. 8-week Co-Parenting classes. intergenerational workshops to high school and middle school students.

Contact information: Terron Edwards, Founder

Phone: (414) 338-DADZ (3239)

Address: 1531 W Vliet St, Milwaukee, WI 53205

Email:

Contactthemovement@Fathersmakingprogress.org

Website:

<https://www.fathersmakingprogress.org/>

Eligibility requirements: Young dads ages 18-27 years, highschool and middle school students.





City on a Hill

Youth and family programs are designed to support children and teens ages 6-18 years by providing emotional, social, and academic support. They equip them with life skills, resources, and mentoring. Also, through Healthcare, Social services and includes Faith focused services.

Contact information: Sara Castelaz, Assistant Director of Family Wellness

Phone: (414) 931-6670

Address: 2224 W Kilbourn Ave, Milwaukee, WI 53233

Email: info@cityonahillmilwaukee.org

Website: <https://cityonahillmke.org/>

Operation hours: Monday - Thursday 8:30 a.m. - 4:30 p.m.

Eligibility requirements: Families in zip codes 53233, 53208, 53204, and 53205.





SKY Schools

The focus on SKY Schools is to reduce violence by promoting peace from within. SKY is a targeted breathing practice that can be used by youth or adults as they work to de-escalate conflict situations. In addition to targeting breathwork, SKY programs also incorporate personal reflection, connection to others, and service learning. SKY breathwork is taught at MPS schools, Journey House and at SWIM (Scaling Wellness in Milwaukee). Individuals are invited to attend free weekly intro to SKY Sessions from 12pm-12:45pm at SWIM (27th and Wells).

Contact information: Matt Nink, Lou Burnett

Phone: (414)-397-1159

Email: matt.nink@iahv.org,
lou.burnett@iahv.org





COA Youth and Family Center

Programs are designed to meet the needs of Amani, Riverwest, and Harambee families through the advancement of our three core areas of focus: early education, youth development, and community development.

Contact information: DeAnna Washington,
Youth Programs Director

Phone: (414) 263-8383

Location: Golden Center

Address: 2320 W Burleigh St, Milwaukee, WI
53206

Location: Riverwest

Address: 909 E Garfield Ave, Milwaukee, WI
53212

Email: questions@coa-yfc.org

Website: <https://www.coa-yfc.org/>

Eligibility requirements: There are services for youth and young adults ages 6 weeks - 18 years.





Crisis Resource Centers

Center for Independence FI's Crisis Resource Centers are community-based psychiatric crisis-intervention programs providing recovery-focused assessment, stabilization, psychosocial groups, and peer support. They serve individuals experiencing crises due to mental illness, substance abuse, or economic challenges, offering an alternative to emergency room visits or inpatient hospitalization.

Contact information: Varies by location

Phone: (414) 476-9675

Location: South

Phone: (414) 643-8778

Address: 2057 S 14th St, Milwaukee, WI 53204

Location: West

Phone: (414) 290-9730

Address: 5566 N 69th St, Milwaukee, WI 53218

Website: <https://cfihope.org/programs-services/crisis-resource-centers/>

Operation hours: Mon - Fri 7:30 a.m. - 4:30 p.m.

Eligibility requirements: Open to individuals experiencing a psychiatric crisis; specific eligibility details can be obtained by contacting the centers directly.





Diverse & Resilient

Diverse & Resilient, in partnership with GSAFE, provides supports to LGBTQ youth and gay straight alliances (GSAs) in high schools through evidence-based interventions, site visits and phone consultations with teacher/counselor advisors, statewide conferences, adult advocate training, and LGBTQ youth leadership development. Further, community-based programs for teens are supported through health-related messaging to youth via social media, brief interventions at pride events, and semi-annual training for youth development specialists.

Contact information: Bethamie Wyatt, Director of Community Programs

Phone: (414) 390-0444

Address: 2439 N Holton St, Milwaukee, WI 53212

Email: bwyatt@diverseandresilient.org

Website: <http://www.diverseandresilient.org/>

Eligibility requirements: Serves the LGBTQ community.





La Causa, Inc. - Targeted Case Management & Crisis Case Management

La Causa provides case management services to adults with mental health or substance use diagnoses. The programs aim to assist individuals in crisis and support their recovery journey, incorporating a team approach with case managers, peer support, and clinicians.

Contact information: Varies by site

Phone: (414) 647-8750

Phone: (414) 257-8095 (for referrals, managed through Milwaukee County CARS Division)

Address: 413 W Scott St, Milwaukee, WI 53204

Email: SS@lacausa.org

Website: <https://lacausa.org/social-services/programs>

Eligibility requirements: Adults with a diagnosis of mental health or substance use.



Milwaukee Police Department Office of Community Outreach and Education

A multigenerational resource directly from MPD to engage training and social connectedness to youth and families in the community. Citizens Academy, Public Safety Cadet program, National night out.

Contact information: Sergeant Ron Edwards

Phone: (414) 935-7927

Address: 749 W State St, Milwaukee, WI 53233

Email: redwar@milwaukee.gov

Website: <https://mpdocoe.org/>

Eligibility requirements: Resident of the city of Milwaukee.





Milwaukee Brighter Futures Initiative (MBFI)

Community Advocates Inc.'s works with several networks of organizations and individuals who are devoted to creating effective prevention strategies. By contracting with direct service providers such as Big Brothers Big Sisters of Metro Milwaukee, Milwaukee Christian Center, Neu-Life Community Development, Pathfinders, PEARLS for Teen Girls, The Parenting Network, and United Community Center.

Contact information: Kari Southern, Deputy Director Public Policy Institute

Email: ksouthern@communityadvocates.net

Website:

<https://ppi.communityadvocates.net/policy-projects/milwaukee-brighter-futures-initiative.html>

Eligibility requirements: MBFI is working toward preventing and reducing the incidence of youth alcohol and other drug use for Milwaukee youth ages 12-21 years.





NEU-LIFE

Offer career development, after school and summer, and prevention programs that focus on empowering the youth. Create a safe and nurturing environment for our youth to grow and thrive.

Contact information: JaQuawn Seals, Co-Site Coordinator

Email: jaquwanseals@neu-life.org

Contact Information: Vince Stepney-Willi, Co-Site Coordinator

Email: vince@neu-life.org

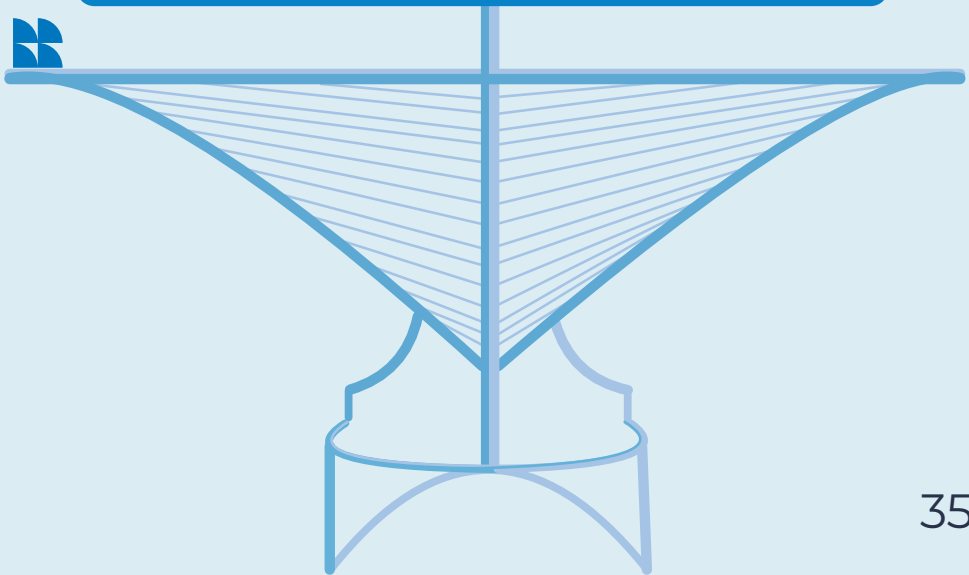
Phone: (414) 933-3924

Address: 2014 W North Ave, Milwaukee, WI 53205

Email: info@neu-life.org

Website: <https://www.neu-life.org/programs>

Eligibility requirements: A variety of programs to support the development of youth and their families.





Nevermore Batterers Treatment Program at Milwaukee Women's Center

Nevermore Batterers Treatment is an educational, support group-based program aiming to help male batterers understand and take responsibility for their violent behavior. Nevermore provides tools and knowledge, to change abusive and controlling behaviors and to prevent domestic violence in intimate partner and/or family relationships.

Contact Information: Steve Thomas, Client Services

Phone: (414) 828-5190

Address: 4900 W Fond Du Lac Ave, Milwaukee, WI 53216

Email: stthomas@camwc.net

Website: <https://communityadvocates.net/what-we-do/milwaukee-womens-center/what-we-do/batterers-treatment.html>

Eligibility Requirements: Males 15 and older having trouble learning how to male behaviors as it relates to intimate partner violence.





Wisconsin Anti Violence Educational Fund

WAVE Educational Fund focuses on gun violence prevention education and awareness, community engagement, and policy through an equity lens. WAVE fills a vital role rallying public support, pressing for action, and giving people across our state a place to turn for trusted information and bold leadership on gun violence prevention policies.

Contact info: Darrell Lofton, Program Manager and Youth Advisory

Email: Dlofton@waveedfund.org

Phone: (414) 351-9283

Website: Wave@waveedfund.org

Eligibility requirements: Anyone living in Wisconsin.



The Kellogg PEAK Initiative

Action projects, community service opportunities, and exploration of the various activities such as camps in destinations and cultures in Milwaukee. Have community and school-based programming.

Contact information: Estevan Galicia, Director of Teen and Community Programs

Phone: (414) 431-4508

Address: 2480 W Cherry St, Milwaukee, WI 53205

Website: <https://www.peakinitiative.org/>

Eligibility requirements: Youth and young adults ages 7-21 years in the city of Milwaukee.





Owen's Place

A FREE Community Resource Center for young adults ages 16-24 years who want encouragement and support on their path to independence.

Contact information: Glynis Underwood, St. Charles Vice President of Operations, Community Programs

Location: Northside Location

Phone: (414) 977-4249

Address: 4610 W Fond du Lac Ave, Milwaukee, WI 53216

Location: Southside Location

Phone: (414) 312-7821

Address: 504 W National Ave, Suite 103, Milwaukee, WI 53204

Email: owensplace@stcharlesinc.org

Website: <https://www.owens-place.com/>

Operation hours: Mon - Fri 10:00 a.m. - 6:00 p.m.

Eligibility requirements: Young adults ages 16-24 years.





Scaling Wellness in Milwaukee (SWIM)

Services to help to prevent and respond to trauma in S.E. Wisconsin. Services offered include healing, wellness, and resilience services for individuals (counseling, Reiki, Yoga, meditation, massage therapy, spiritual guidance, community support groups, skincare and trauma-responsive capacity building for organizations (trainings and workshops, consulting, educational services, coalition building).

Contact information: Jill Drzewiecki, Director

Phone: (414) 288-3331

Address: 831 N 27th St, Milwaukee, WI, 53208

Email: information@swimke.org

Website: <https://www.swimke.org/>

Eligibility requirements: Open to all who need free and/or low-cost trauma-informed, community-based, and culturally relevant wellness services.





Sojourner Family Peace Center

Sojourner Family Peace Center is a nonprofit provider of domestic violence prevention and intervention services in Wisconsin. Sojourner provides an array of support aimed at helping families affected by domestic violence achieve safety, justice and well-being. Also, the safety of victims of family violence and provide a pathway out of violence for victims and abusers through opportunities to make positive and lasting changes for themselves and their children.

Contact information: Varies by service

Phone: (414) 933-2722 (call, 24-hour hotline & crisis shelter)

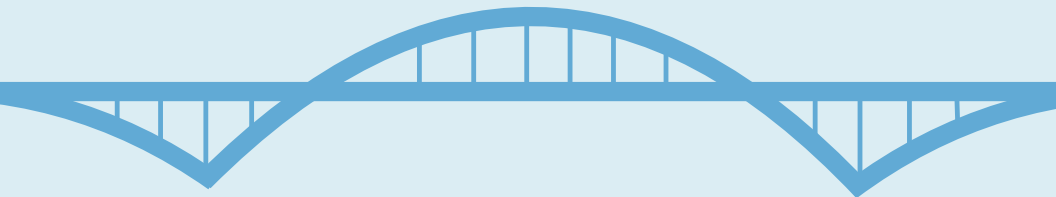
Phone: (414) 877-8100 (text)

Phone: (414) 276-1911 (Main Office)

Address: 619 W Walnut St, Milwaukee, WI 53212

Website: <https://www.familypeacecenter.org/>

Eligibility requirements: Women and families affected by domestic violence.





The Parenting Network

Works to empower anyone in a parenting role through in home services (home visiting and case management services for families in need), in schools services healthy relationship education to prevent sexual violence and teen pregnancy; parenting education for expectant and parenting teens), services in the Community (confidential Parent Helpline and a wide variety of parenting education and support classes and groups developed for specific parenting populations) at sites throughout Milwaukee County.

Contact information: Varies by service

Phone: (414) 671-0566

Address: 1037 W McKinley Ave, Suite 316,
Milwaukee, WI 53205

Website: <https://www.theparentingnetwork.org/>

Eligibility requirements: Supports Anyone in a parenting role - mothers, fathers, grandparents or other relatives raising children, whether stepparents, foster parents, and the parents of tomorrow.





United Community Center (UCC)

Provides services and programs to Milwaukee residents in the areas of education, arts, recreation, community development, and health & human services.

Contact information: Varies by program

Phone: (414) 384-3100

Address: 1028 S 9th St, Milwaukee, WI 53204

Email: info@unitedcc.org

Website: <https://www.unitedcc.org/>

Eligibility requirements: Services offered for youth as young as 6 weeks, adults and families.



Wisconsin Community Services (WCS)

WCS offers a range of behavioral health services, including Community Support Programs (CSP) and Targeted Case Management (TCM), for individuals with severe and persistent mental health and substance use needs. They provide coordinated care and assertive community treatment to support recovery.

Contact information: Chad Meinholdt, Vice President of Behavioral Health Services

Phone: (414) 885-2236

Location: North Avenue Campus (Programs)

Address: 2342 N 27th St, Milwaukee, WI 53210

Email: wcs@wiscs.org

Website: <https://www.wiscs.org/service-areas/>

Eligibility requirements: Individuals with severe and persistent mental health and substance use needs; specific eligibility criteria can be obtained by contacting WCS directly.





Housing Support Services



Guest House

Programs and services designed to address the full spectrum of homelessness, including prevention, shelter, clinical services, housing, and long-term case management.

Contact information: Paige Steder, Associate Vice President of Shelter Programs

Phone: (414) 345-3240

Address: 1216 N 13th St, Milwaukee, WI 53205

Email: info@guesthouseofmilwaukee.org

Website:

<https://www.guesthouseofmilwaukee.org/>

Eligibility requirements: Adult men and women with mental health, substance abuse, and co-occurring diagnoses.



META House

META helps women to overcome substance use disorder through residential services, SUD Services, Mental Health Services, Case Management Child & Family Services, Vocation & Education Services, Comprehensive Community Services.

Contact information: Varies by service

Phone: (414) 962-1200

Address: 2625 N Weil St, Milwaukee, WI 53212

Email: info@metahouse.org

Website: <https://www.metahouse.org/>

Eligibility requirements: Women struggling with substance use disorder.



Pathfinders Milwaukee

Pathfinders assists homeless and housing-insecure youth in finding and maintaining safe housing. Once housed, they offer support as youth work towards stability, mental well-being, education, employment, and other personal goals.

Contact information: DeShanda Williams-Clark, MSCP, Chief Program Officer

Phone: (414) 270-1560 (Pathfinder's 24/7 Hotline for confidential counseling for youth looking for resources and support)

Address: 4200 N Holton St, Suite 400, Milwaukee, WI 53212 (Pathfinders Drop-In Center)

Phone: (414) 964-2565

Email: info@pathfindersmke.org

Website: <https://www.pathfindersmke.org/our-services/>

Operation hours: Mon 9:00 a.m. - 3:00 p.m. (Appointment only), Tues & Thurs 11:00 a.m. - 5:00 p.m. (Case management and groups only), Wed & Fri 2:00 p.m. - 9:00 p.m.

Eligibility requirements: Services are targeted towards homeless and housing-insecure youth in Milwaukee.



* Behavioral Health Services and Helpline

* Milwaukee County DHHS: Better Ways To Cope (BWTC)

BWTC is a community-centered harm reduction, prevention, treatment and recovery campaign powered by the Department of Health and Human Services. This multifaceted movement uses media platforms to promote services, regrants funds to community organizations, shares resources with community members and equips everyone with the skills to cope in a better way.

Contact information: Jeremy Triblett,
Prevention Integration Manager

Phone: (414) 257-7222 (24-Hour Crisis Line)

Email: jeremy.triblett@milwaukeecountywi.gov

Website:

<https://county.milwaukee.gov/EN/DHHS/BHD/Prevention-and-Harm-Reduction/Better-Ways-To-Cope>

Eligibility requirements: Call now if you believe you or a loved one is experiencing a crisis.





IMPACT 211

IMPACT 211 resource directory is your guide to family, health, and social services in your area.

Phone: 211 (for local resources to food, shelter, jobs and other resources; 24/7)

Website: <https://www.impactinc.org/impact-211/>



Postvention Support: MKE L.O.S.S. Postvention Program

The team provides direct outreach to offer grief and bereavement support to suicide loss survivors.

Contact information: Tricia Monroe,
Community Program Manager

Phone: (414) 955-7660

Email: pmonroe@mcw.edu

Contact information: Neal Davis, Community
Program Coordinator

Phone: (414) 955-5920

Email: ronndavis@mcw.edu



Suicide and Crisis Lifeline

Crisis line for mental health struggles, emotional distress, alcohol or drug use concerns. Lifeline is available 24/7/365. Conversations are free and confidential.

Phone: 988

Website: <https://988lifeline.org/>





Educational Trainings



Froedtert & the Medical College of Wisconsin

STOP THE BLEED® is an hour-long course that teaches community members how to identify and treat life-threatening bleeding. Knowing how to recognize and control severe bleeding while waiting for first responders to arrive can save someone's life. The course includes a presentation from trained instructors along with hands-on practice. Participants will learn: How to recognize a bleeding emergency, personal safety protection, what to do as a bystander, and how to apply pressure, pack a wound, and secure a tourniquet to control bleeding. This is a free training provided by Froedtert & the Medical College of Wisconsin.

To search for a public course go to:

www.Froedtert.com/classes

To request a course for your group of 10 or more people in Milwaukee County, complete the request form:

<https://www.surveymonkey.com/r/JTPL2J6>

Website:

<https://www.froedtert.com/trauma/bleeding-control>





Trauma Survivors Network

As a Level I Trauma Center, Froedtert Hospital not only treats people who have been injured, but also provides support throughout a person's recovery. Froedtert Hospital connects injury survivors and their families with free Trauma Survivors Network programs and resources needed to help manage life after serious injury. Joining the Trauma Survivors Network can help ease the anxiety and frustration that can happen after a sudden injury and hospital stay. Learning more and connecting with others makes a difference in a person's recovery. If you or a loved one has experienced a serious injury, the Trauma Survivors Network provides essential information, support, and encouragement.

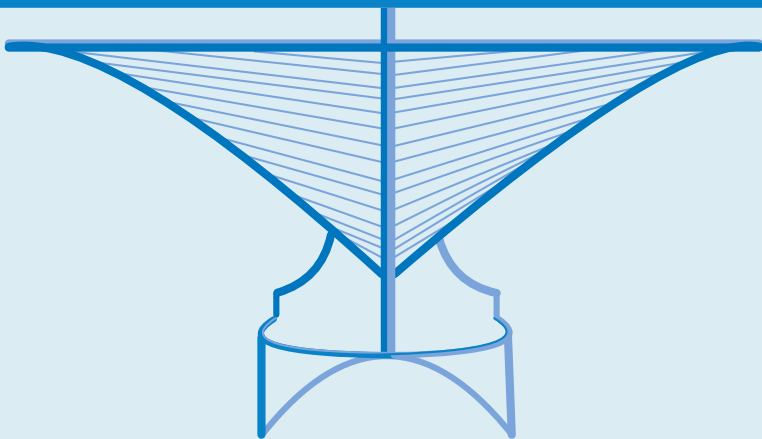
Website: [https:](https://www.froedtert.com/trauma/trauma-survivors-network)

[//www.froedtert.com/trauma/trauma-survivors-network](https://www.froedtert.com/trauma/trauma-survivors-network)

Contact Information: Froedtert Adult Level I Trauma Center

Email: FroedtertTraumaCenter@froedtert.com

Phone: (404) 805-8744





Gunlock Safe Storage Resources



Gun locks are a simple, effective way to prevent firearm injuries and deaths. Gun locks reduce the risk of accidental shootings, suicides, and unauthorized use—especially in homes with children or individuals in crisis.

Where to find free gun locks?



Harm Reduction Vending Machines

Free gun locks can be accessed at any of 19 Milwaukee County Behavioral Health Services Harm Reduction Vending Machines. Several machines are housed within local nonprofits and community centers. You can also access Narcan and other harm-reduction supplies through the vending machines.

Locations Map: [2023 HRVM Selected Application Map](#)



Journey House

Located in the Clarke Square neighborhood, Journey House provides free gun locks for residents.

Address: 2110 W Scott St, Milwaukee, WI 53204





* **Milwaukee Christian Center**

The Milwaukee Christian Center provides free gun locks for residents at its food pantry Monday through Thursday from 1:00 p.m. to 3:00 p.m.

Address: 807 S 14th St, Milwaukee, WI 53204

* **Milwaukee Police Department**

The Milwaukee Police Department makes available free gun locks at some of its district stations. They recommend that you contact your local police district station to check on availability.

Website:

<https://city.milwaukee.gov/police/Police-Districts/maps>

* **United Neighborhood Centers of Milwaukee (UNCOM)**

Residents can pick up free gun locks at the UNCOM home office on North Avenue any weekday from 9:00 a.m. to 1:00 p.m.

Address: 1609 W North Ave, Milwaukee, WI 53205





Where to find safe gun storage?



Wisconsin Gun Shop Project & Safe Storage Program (Milwaukee County Locations)

The Live Today-Put It Away project allows participating gun shops to provide firearm suicide prevention and safety information and gun storage at a location outside of your home for a low fee. You can find various locations in Milwaukee County.

Address: Multiple

Website: <https://livetodayputitaway.org/>



STOP
VIOLENCE

Thank you to our partners



CITY
ON A
HILL



City
of
Milwaukee

OFFICE OF
COMMUNITY
WELLNESS
AND SAFETY



MILWAUKEE COUNTY
DEPARTMENT OF
HEALTH & HUMAN
SERVICES



SAFE & SOUND

