



Our Health. Our Community. Our Future.

Monthly news & updates

June is a month of celebration and empowerment for the LGBTQIA+ community as it marks Pride Month. In this spirit of inclusivity and acceptance, MKE Elevate is thrilled to acknowledge and honor Pride Month. MKE Elevate recognizes the importance of creating a society that celebrates diversity and promotes equality for all. By embracing the values of love, respect, and acceptance, we aim to uplift and amplify the voices of the LGBTQIA+ community. We stand in solidarity with the LGBTQ+ individuals and their allies, spreading awareness, fostering understanding, and advocating for a world where everyone can live authentically, healthy, and without fear of discrimination not just in June, but everyday!

June Community meeting recap

On June 22nd, MKE Elevate held our first community meeting at the Washington Park Library, and we were delighted to see a turnout of over 30 enthusiastic community members! The meeting provided an opportunity for networking and engaging discussions regarding the draft of the Community Health Improvement Plan (CHIP). We greatly appreciated the insightful feedback received!

For those who were unable to attend, we want to assure you that there will be another opportunity to contribute your input. We will offer an opportunity for further feedback in mid-July. Stay tuned for further details, which will be shared next week, outlining how you can participate and make your voice heard. Your involvement is essential in shaping a healthier and stronger community!

[Notes](#)

[Powerpoint](#)

May Action Team Meetings Minutes and Q3 registration links.

Action Team Meetings registration for May 2023.

During the May meetings action teams worked on developing goals and strategies for each priority item to help make a difference in the health of Milwaukeeans over the next 5 years. Please view the notes from each meeting below and sign up for Q3 meetings

Built Environment Action Team

(Virtual, via Zoom)
Thursday, August 17th
10:00 am to 11:30 am

Notes [here](#)
Register [here](#)

Maternal & Child Health Action Team

(Hybrid - In person at Southside Health Center and via Zoom)
Thursday, August 17th 4:00 pm to 5:30 pm

Notes [here](#)
Register [here](#)

Safety and Violence Prevention Action Team

(Virtual, via Zoom)
Tuesday, August 22nd, 10:30 am to 12:00 pm

Notes [here](#)
Register [here](#)

Join us at our
Q3 Action Team Meetings this August!



Please join us at our third round of Action Team Meetings to help determine goals and strategies for the next five year plan!



Built Environment

Virtual meeting via Zoom
Thursday, August 17 - 10:00am to 11:30am



Maternal & Child Health

Virtual meeting via Zoom
Thursday, August 17 - 4:00pm to 5:30pm



Safe & Supportive Communities

Virtual meeting via Zoom
Tuesday, August 22 - 10:30am to 12:00pm



Register for Zoom meetings at
milwaukee.gov/elevate





Our Health. Our Community. Our Future.

2023-2028 MKE ELEVATE COMMUNITY HEALTH IMPROVEMENT PLAN

Overarching Priority:
**Racism and
Health Equity**

Priority Action Areas:



Built Environment

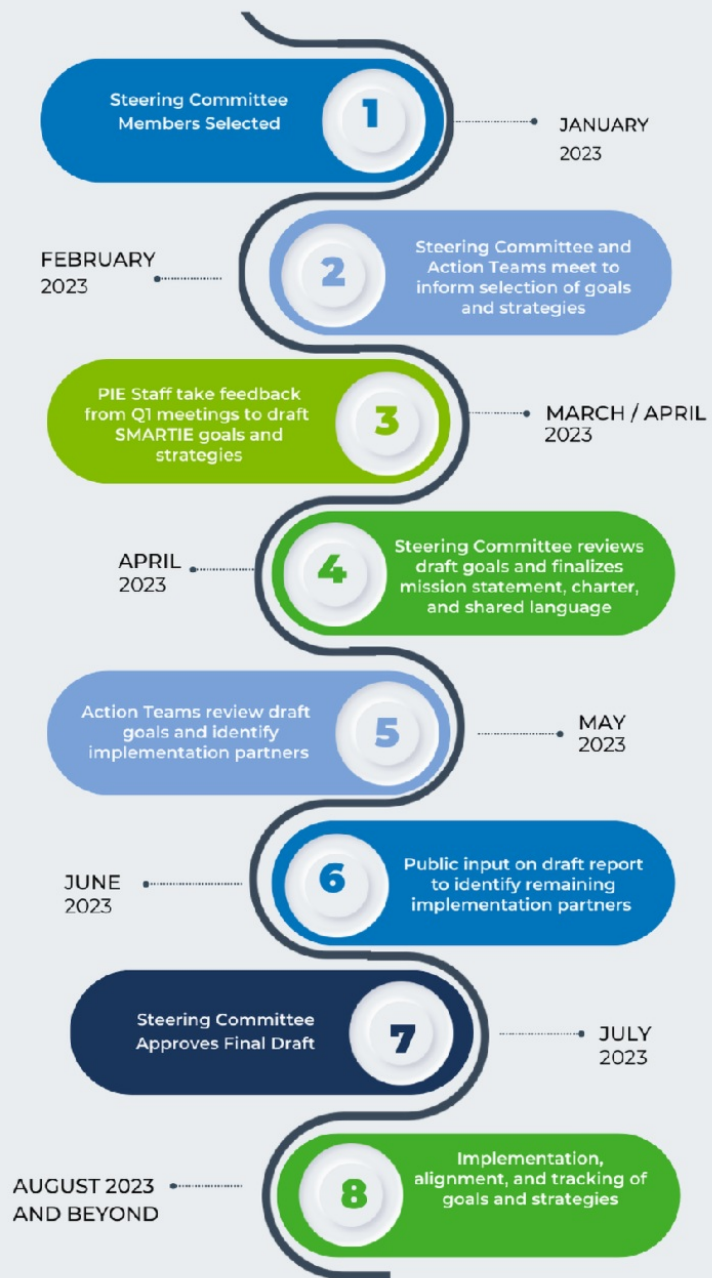


Maternal and Child Health



Safety and Violence Prevention

2023 TIMELINE



Learn more at milwaukee.gov/elevate

Meet MKE Elevate's Implementation Partner Meta House



Why did Meta House sign on as an MKE Elevate Implementation Partner?

Expertise in Women's SUD treatment: Meta House has extensive experience and expertise in providing specialized treatment for pregnant and postpartum women with substance use disorders. This population has unique needs that require specialized care, including comprehensive support for both their addiction and maternal health.

By participating in the community health improvement plan, Meta House can contribute its knowledge and experience to help shape effective strategies and interventions specifically tailored to this population.

Full continuum of care: Meta House offers a full continuum of care, including residential treatment, outpatient services, and recovery housing. This comprehensive approach ensures that women can receive the appropriate level of care at different stages of their recovery journey. By aligning efforts with the city's health department, Meta House can collaborate with other healthcare providers and organizations to ensure a seamless transition for women from one level of care to another, promoting continuity and long-term success in their recovery.

Collective action and coordination: The MKE Elevate community health improvement plan aims to align efforts across the city for collective action. By participating in this plan, Meta House can collaborate with other stakeholders, including government agencies, healthcare providers, community organizations, and advocacy groups.

This collective action allows for better coordination of resources, information sharing, and the pooling of expertise. By working together, these stakeholders can address the complex challenges of substance use disorders more effectively and efficiently, ensuring that pregnant

and postpartum women receive the best possible care and support.

Long-standing community service: With over 60 years of service in the Milwaukee community, Meta House has established itself as a trusted and reputable organization. By actively participating in the community health improvement plan, Meta House can contribute its wealth of knowledge and experience, building upon its long-standing commitment to serving women and families in need. This involvement strengthens the overall impact of the plan by incorporating the insights and perspectives of an organization deeply rooted in the community.

Implementation Partner Agreement

MKE Elevate Implementation Partners

This agreement is to provide implementation assistance to MKE Elevate in connection with the implementation of the strategies selected for our community health improvement plan .

Such implementation assistance may include, but is not limited to:

- Providing expertise,
- Resources
- Data sharing as it relates to the goals and strategies identified in the CHIP

Being an implementation partner for MKE Elevate means your organization has agreed to collaborate with the Milwaukee Health Department to support the implementation of the plan's strategies and initiatives aimed at improving the health and well-being of the community.

Why is data sharing important?

Sharing data empowers communities to make informed decisions, address inequalities, collaborate effectively, foster transparency and accountability, promote innovation, and plan for long-term well-being. It plays a crucial role in building healthier and more equitable Milwaukee.

Expectation of an implementation partner are:

- Share program data with us on a yearly basis.
- This may include data you regularly report on for grant funding.

Things to note: *If your organization does not have an established data reporting process, our MHD's data team will work with you to identify meaningful metrics for this partnership and data should not include client identifiers*

- Attend at least half of action team meetings (2 meetings) and general meetings (1 meeting)
- Commitment to being an anti racist organization (for more information go to <https://aorta.coop/continuum>)

Sign on as an implementation partner [here](#)

Milwaukee's Climate and Equity Plan Update!

We are so excited to share the Climate and Equity Plan was adopted by

common council! This plan helps Milwaukee address climate change and racial equity by creating more green jobs and providing more job opportunities for people of color.

Read more about the plan [here](#)

2023 MKE Markets That Accept Food Benefits

"Milwaukee Market Match Available Now!"

Milwaukee Market Match, the program that doubles the amount of fresh produce you can purchase when you use your FoodShare (SNAP/EBT) at the market is available now! Match is available up to \$20 per person per day. For more information please [visit our website](#).

2023 MARKET SEASON

MARKET	ADDRESS	SEASON	HOURS	BENEFITS
Brown Deer Farmers Market	<i>Village Park & Pond</i> 4920 W. Green Brook Dr. Brown Deer, WI 53223	June 14 – October 25	Wednesdays 10 AM – 3 PM	
Cudahy Farm Stand	5050 S. Lake Dr. Cudahy, WI 53110	June 13 – October 24	Tuesdays 9 AM – 3 PM	
Fondy Farmers Market	2200 W. Fond du Lac Ave. Milwaukee, WI 53206	May 13 – October 29		
		Early Season: May 13 – July 1	Saturdays 9 AM – 1 PM	
		Regular Season: July 8 – Oct 29	Saturdays 7 AM – 2 PM Sun & Thurs 9 AM – 2 PM	
Greendale Downtown Market	<i>Greendale Village Center</i> Broad St. & Northway Greendale, WI 53129	June 3 - September 30	Saturdays 8 AM – 12 PM	
Greenfield Farmers Market	<i>Konkel Park</i> 5151 W. Layton Ave. Greenfield, WI 53220	May 7 - October 29 <i>No market May 28</i>	Sundays 10 AM – 2 PM	
Jackson Park Farmers Market	<i>Jackson Park (Boat House on KK River Parkway)</i> 3500 W. Forest Home Ave. Milwaukee, WI 53215	June 15 - September 28	Thursdays 3 - 6:30 PM	
Mount Calvary CDC Farm Stand	1115 N. 35th St. Milwaukee, WI 53208	July 14 - September 29	Tuesdays 3 - 6 PM Fridays 3:30 - 6 PM	
North Side Pop-up Farmers Markets	<i>Rotating locations across Milwaukee's North Side</i> More info: nwsdc.org	August 1 - 22	Tuesdays 3:30 - 6:30	
Oak Creek Farmers Market	<i>Drexel Town Square</i> 361 W. Town Square Way Oak Creek, WI 53154	May 6 - October 21 <i>No market July 22</i>	Saturdays 9 AM – 1 PM	
Riverwest Farmers Market	2700 N. Pierce St. Milwaukee, WI 53212	June 4 - October 29 <i>No market July 2</i>	Sundays 10 AM – 3 PM	
Shorewood Farmers Market	<i>Estabrook Park</i> 4100 Estabrook Pkwy Shorewood, WI 53211	June 18 - October 29	Sundays 9:30 AM – 1 PM	
South Milwaukee Downtown Market	1101 Milwaukee Ave. South Milwaukee, WI 53172	June 1 - October 5	Thursdays 3 - 7 PM	
South Shore Farmers Market	<i>South Shore Park</i> 2900 S. Shore Drive Milwaukee, WI 53207	June 17 - October 28	Saturdays 8 AM – 12 PM	
Tosa Farmers Market	7720 Harwood Ave. Wauwatosa, WI 53213	May 27 - October 14	Saturdays 8 AM – 12 PM	
West Allis Farmers Market	6501 W. National Ave. West Allis, WI 53214	May 6 - November 25 <i>No market November 23</i>	Tues and Thurs 12 – 6 PM Saturdays 1 – 6 PM	
Whitefish Bay Farmers Market	325 E. Silver Spring Dr. Whitefish Bay, WI 53217	July 15 - October 28	Saturdays 8:30 AM - 12:30 PM	

QUEST / SNAP / EBT / FoodShare

MKE Market Match doubles the amount of fresh produce you can purchase when you use your QUEST/EBT at the market

WIC / Senior Women, Infants and Children & Senior Farmers Market Nutrition Program (FMNP)

WIC / Senior Match doubles the amount of fresh produce you can purchase when you use your WIC & Senior FMNP vouchers

For more information about using your benefits at farmers markets, please visit bit.ly/EBTMKE

July Events

If you or your organizations would like any events shared on this newsletter please email

MKEElevate@milwaukee.gov

414 LIFE POP-UPS

JULY
1

414 LIFE Community
Pop-Up
13th & Clarke

2-5pm



JULY
8

414 LIFE Community
Pop-Up
Smith Park
5463 N. 33rd Street

2-5pm



JULY
15

414 LIFE Community
Pop-Up
Walkers Square Park
1031 S. 9th Street

2-5pm



MILWAUKEE COUNTY SENIOR DINING

DINE OUT



*Because good nutrition improves quality of life.
Because it is important to have culturally diverse options.
Because supporting small business strengthens the community.*



Open for Restaurant Dining in July
Thursdays 11:00 - 1:00 PM
754 N. 27th Street Milwaukee 53208

For Anyone 60+ (verified w/photo ID)
Completed Registration Form
Choose Entrée & Two Sides
Other Menu items for full price
Please Tip Waitstaff accordingly
Enjoy Meal!

ENTRÉE

Select One:



- Baked Chicken
- Fried Chicken
- Catfish

*Includes:
Dinner Roll, Fruit, Milk or Water*

SIDES

Select Two:



- Sweet Potatoes
- Mac & Cheese
- Black-Eyed Peas
- Smoked Turkey Greens
- Green Beans & Potatoes



SENIORDINING@MILWAUKEECOUNTYWI.GOV • COUNTY.MILWAUKEE.GOV/AGING • SENIOR DINING OFFICE: 414.289.6995

AMANI YOUTH COUNCIL INVITES YOU TO THE



YOUTH MARCH AGAINST GUN VIOLENCE



MOODY PARK
SUNDAY, JULY 30, 2023 | 2-6PM

USE YOUR
VOICE!

FREE
FOOD

OPEN MIC FOR
ANYONE WHO
WOULD LIKE
TO SPEAK ON
VIOLENCE IN
OUR CITY

FUN
GAMES



MILWAUKEE PARKS
FOUNDATION

For more information, contact the Amani Youth
Council at amaniyouthcouncil1@gmail.com

SCAN TO SIGN UP!
OR VISIT: [bit.ly/
AmaniYouthCouncil](https://bit.ly/AmaniYouthCouncil)



SPONSORED BY:
THE FRIENDS OF MOODY PARK
AND BIG JIM'S STORE

DRIVE WISDOM



JOIN US:
EVERY SATURDAY
JULY 8TH-AUGUST 12TH
10:30AM-12:30PM

REGISTRATION NOW OPEN
AGES 14 - 18



25TH
ANNIVERSARY
SAFE & SOUND

6 WEEK DRIVE WISDOM YOUTH WORKSHOP

Session 1: Driving 101

Session 2: Project 943 Video

Session 3: So You Got Pulled Over

Session 4: Car, Bus, Bike or Walk

Session 5: The Cost of Driving

Session 6: Safe & Sound Drivers

PLEASE CONTACT DIAMOND THOMPSON
DIAMOND@SAFESOUND.ORG

JOIN US

THURSDAY

29 JUNE 2023

5:00 - 7:00 PM

Employ MKE
2342 N 27th Street
Milwaukee, 53210



Panelists:

- Jessica Butler, 414LIFE Program Operations Manager
- Andre Lee Ellis, President of The CAGE (Community Agriculture Growing Experience)
- Nicholas X Doherty, 414LIFE Outreach Worker
- David Muhammad, Deputy Director of Milwaukee County DHHS
- Moderated by Deonte Lewis, VP of Operations of Boys & Girls Clubs of Greater Milwaukee

To register:

<https://Healing4ourYouth.eventbrite.com>

HEALING 4 OUR YOUTH

Together, Creating Healthy Solutions
to Decrease Youth Violence

Join Milwaukee County DHHS for an intergenerational community event tackling community violence. Come and contribute to the dialogue on solutions for the root causes of violence, focusing on its impact on youth.

Share your stories, enjoy light refreshments, and participate in interactive activities promoting positive change for community healing and safety.

Don't miss this opportunity to make a difference and foster a safer community for everyone!



Opportunities to Engage

If you missed any of our meetings, you can view [a recording](#) and review [meeting materials](#) online.

The Milwaukee Health Department serves as the convener for MKE Elevate, coordinating partners, aligning strategies, and facilitating a steering committee and issue-based action teams.

If you are interested in getting involved, email mkeelevate@milwaukee.gov for more information.

To learn more visit our website or follow us on social media!

