



Monthly news & updates

Happy New Year!

As we shared last month, our final priorities have been selected, based on our Community Health Assessment data and community input from over 2,000 surveys, 86 photo submissions, and feedback at 4 community meetings. We are excited to kick off our new action teams to set goals and strategies for our next 5 year community health improvement plan!

Please join us for an action team meeting in February or for a general member meeting later this spring.

Safety and Violence Prevention Action Team

Initial community meeting will be in partnership with the Office of Violence Prevention
Date for public meeting TBD - stay tuned for more info!

Built Environment Action Team (Virtual, via Zoom)

Thursday, February 16th 11:00am to 12:15pm

Register here:

<https://us02web.zoom.us/meeting/register/tZ0uf-uvqDkvGt2tIGnJjn4X9itWVqYeRe1M>

Maternal and Child Health Action Team (Hybrid, in person and via Zoom)

Thursday, February 16th 4:00 to 5:30pm

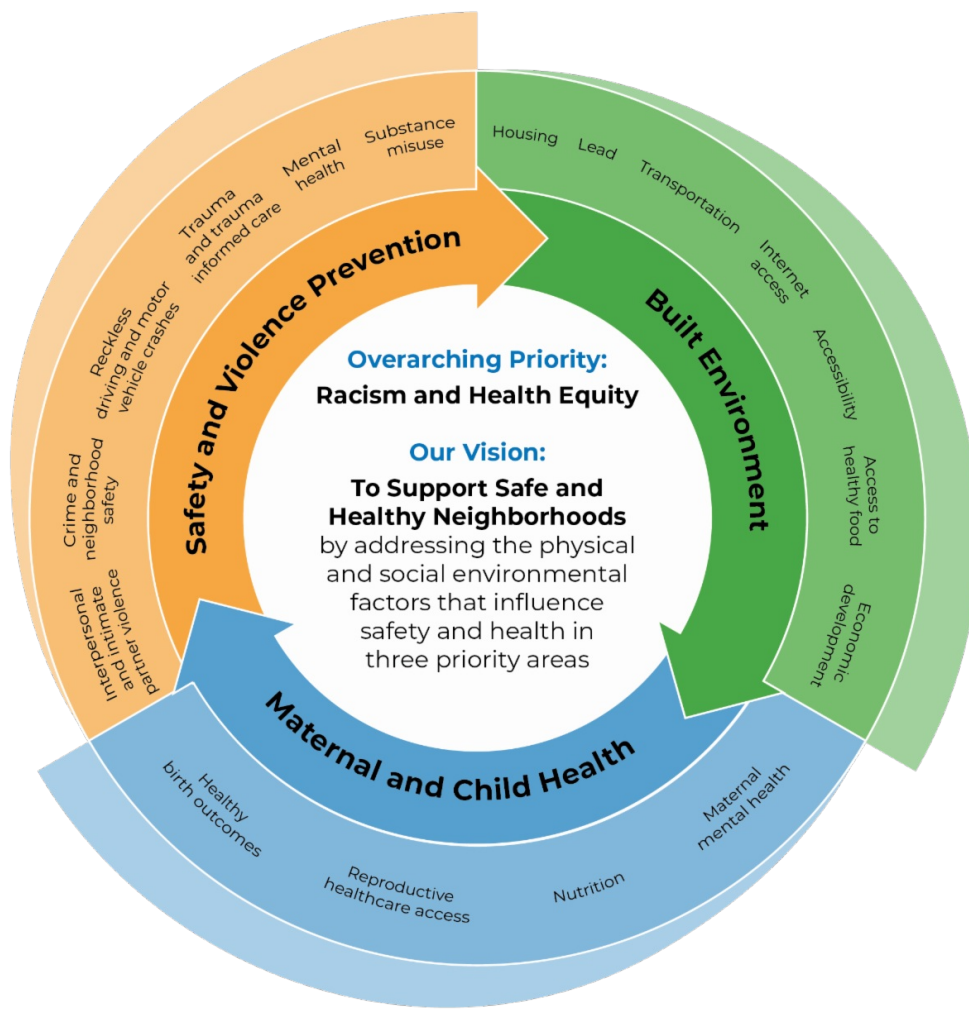
In person location: Southside Health Center

Register here:

<https://conta.cc/3ZWIEap>

Thanks to all who have expressed interest in joining our 2023-2028 MKE Elevate Steering Committee! We are currently reviewing submissions and will notify individuals later this month if they were selected to join.

A graphic titled '2023-2028 PRIORITIES' featuring the MIKE ELEVATE logo and tagline. The background is a light-colored map of Milwaukee. The text includes: 'Overarching Priority: Racism & Health Equity', 'Three Priority Action Areas:', and three categories with icons: 'Safety & Violence Prevention' (shield icon), 'Built Environment' (building icon), and 'Maternal and Child Health' (baby bottle icon). At the bottom, it says 'CITY OF MILWAUKEE HEALTH DEPARTMENT' and 'milwaukee.gov/elevate'.



2023 - 2028 MKE ELEVATE COMMUNITY HEALTH IMPROVEMENT PLAN TIMELINE



Opportunities to Engage

If you missed our fall meetings, you can view [a recording](#) and review [meeting materials](#) online.

Get involved!



milwaukee.gov/elevate

Help inform community health improvement efforts in Milwaukee!

The Milwaukee Health Department serves as the convener for MKE Elevate, coordinating partners, aligning strategies, and facilitating a steering committee and issue-based action teams.

If you are interested in getting involved, complete this [interest form](#) or email mkeelevate@milwaukee.gov for more information.

To learn more visit our website