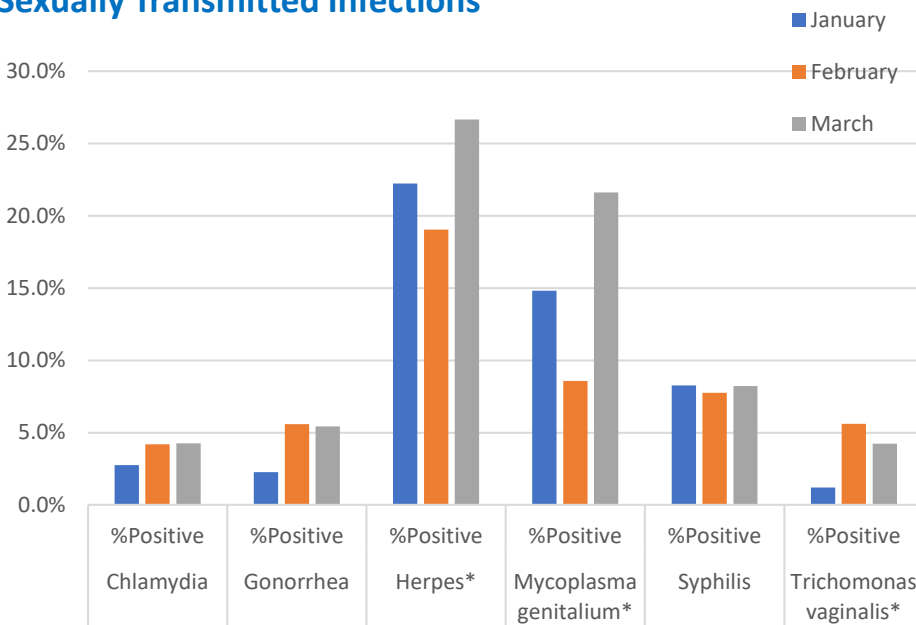


# Clinical Laboratory Update

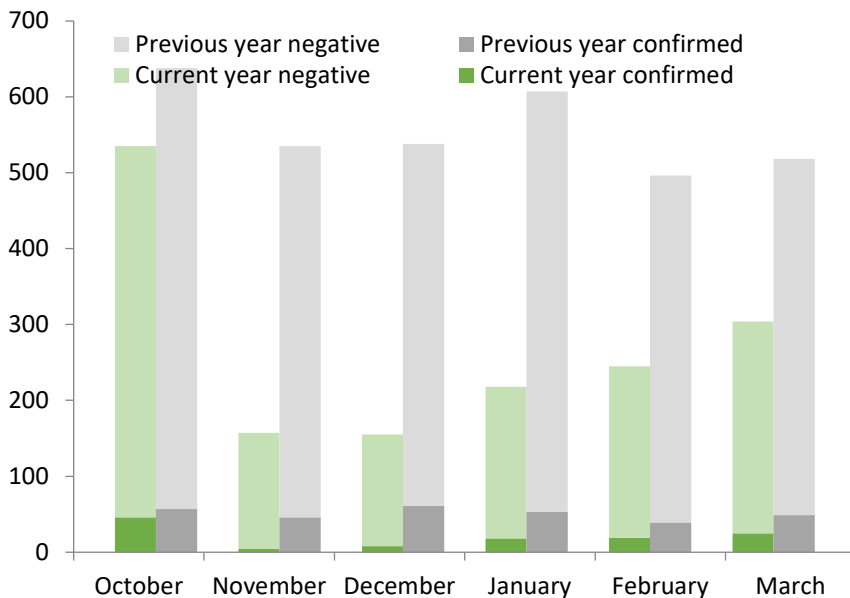
## Sexually Transmitted Infections



**Figure 1:** Percent positivity for specimens screened using molecular or serological assays for the given organism.

\*Not reportable as per WI DHS 145.04 (3) (a)

## Syphilis Surveillance

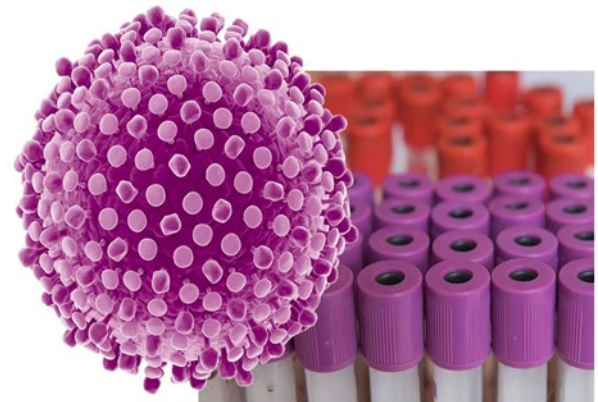


**Figure 2:** Monthly comparison of syphilis data with year over year comparisons.

Number of specimens screened at MHD, darker bars represent confirmed tests.

## Hepatitis C Testing

**Did you know?** MHDL offers quantitative hepatitis C testing for patients visiting our Keenan Sexual Health Clinic. Many people with the disease do not have symptoms and are unaware they are infected. People with chronic hepatitis C can live for years without symptoms or feeling sick. When symptoms do appear, they often indicate advanced liver disease. Getting a blood test is the only way to tell if you have been infected with the hepatitis C virus.



### Links to related information & data:

[MHD COVID-19 Situation](#)

[WSLH Laboratory Surveillance Report](#)

[WI SARS-CoV-2 Genomic Dashboard:](#)

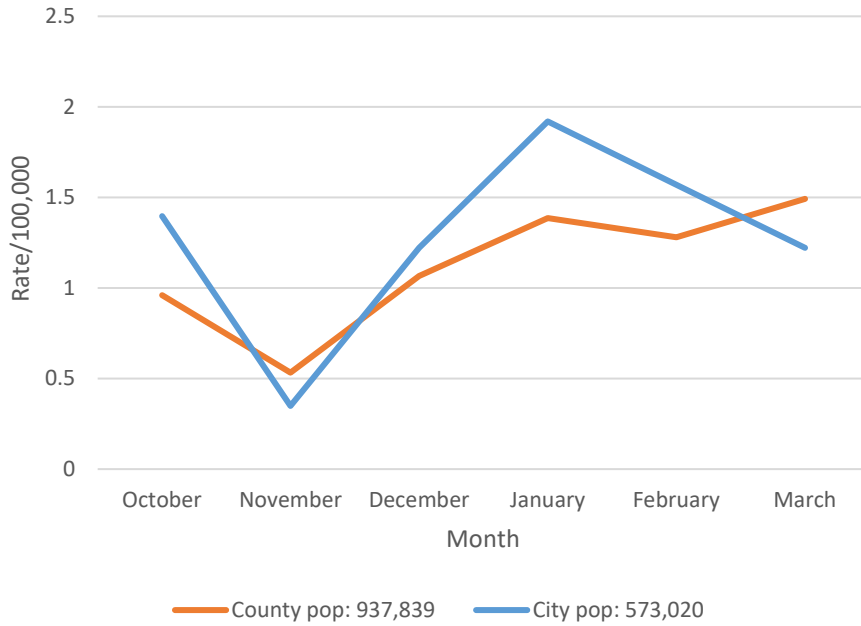
<https://dataportal.slh.wisc.edu/>

<https://city.milwaukee.gov/CovidVax>

**CDC COVID-19 Data Tracker:**

<https://www.cdc.gov/coronavirus/2019-ncov/covid-data/covidview/index.html>

## New HIV Infections

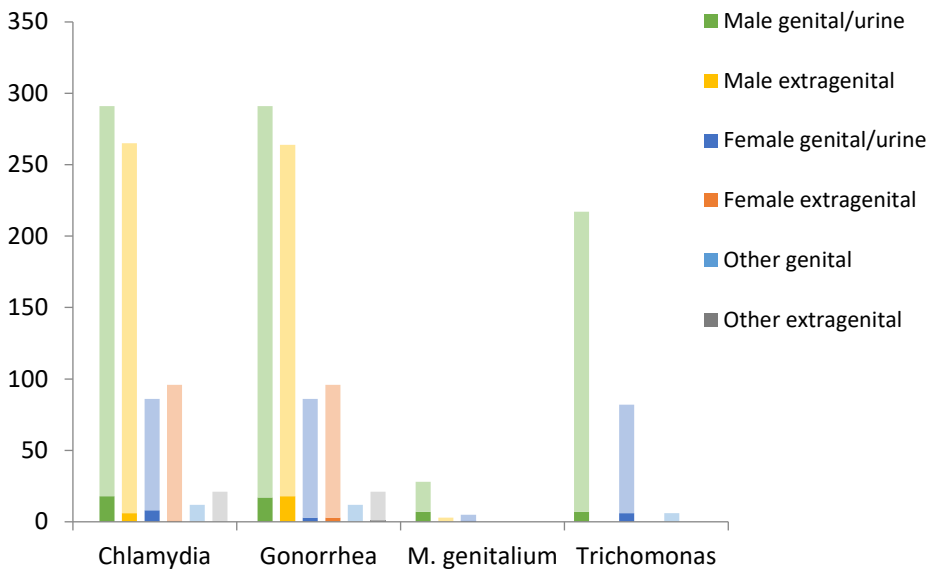


**Figure 3:** Monthly comparison of rate of new HIV infections in Milwaukee County and the City of Milwaukee, using data obtained from the Wisconsin Department of Health Services. Numbers are provisional and subject to change. Population figures taken from 2020 census results.

For statewide HIV data, visit:

<https://www.dhs.wisconsin.gov/hiv/data.htm>

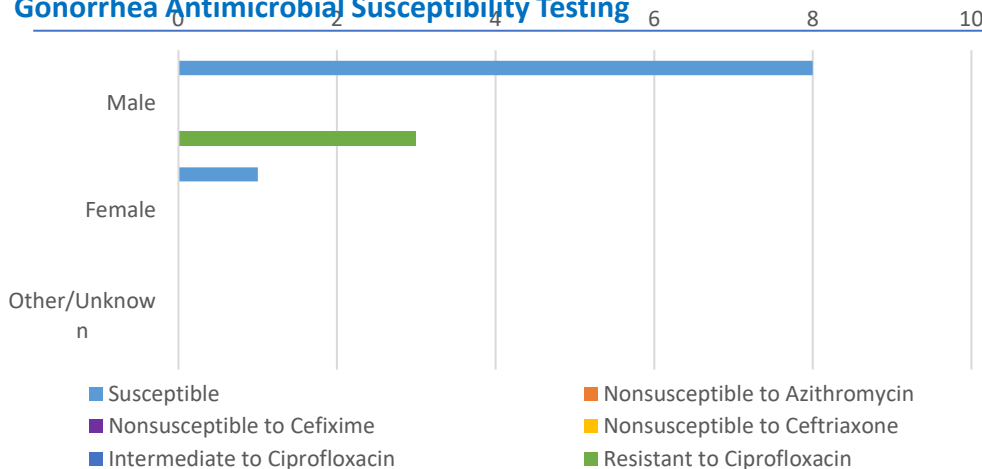
## Sexually Transmitted Infections by Source



**Figure 4:** Distribution of STIs detected using NAAT. In March 2026, 4.3% of male, 4.9% of female and 0% of other gender specimens screened were positive for Chlamydia. 6.3% of male, 3.3% of female and 3.0% of other gender specimens were positive for Gonorrhea. 21.9% of male, 1 in 5 female and 0% of other gender specimens were positive for *M. genitalium*. 3.2% of male specimens, 7.3% of female and 0% of the other gender specimens were positive for *Trichomonas*.

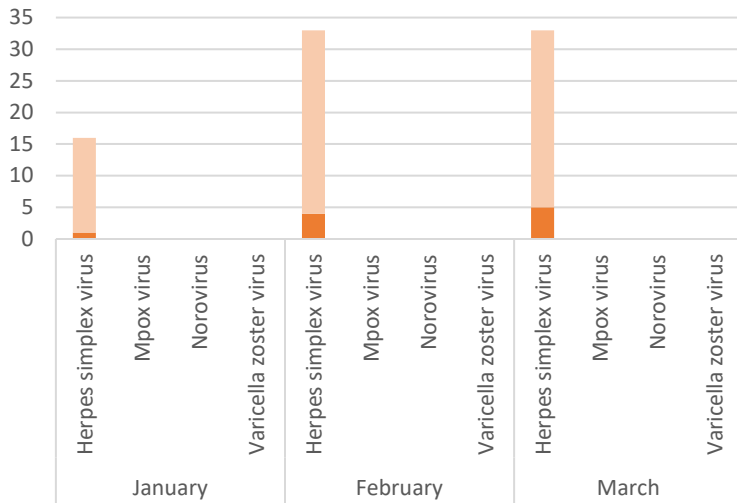
Note: Darker bars indicate positive specimens.

## Gonorrhea Antimicrobial Susceptibility Testing



**Figure 5:** Antibiotic susceptibility profile of Gonorrhea isolates identified in males and females. In March 2026, 3 of the 12 cultures tested were found to be resistant to Ciprofloxacin according to CLSI guidelines. MHDL tests for antibiotic resistance to Ceftriaxone, Cefixime and Ciprofloxacin, and Azithromycin on request.

## Viral Surveillance

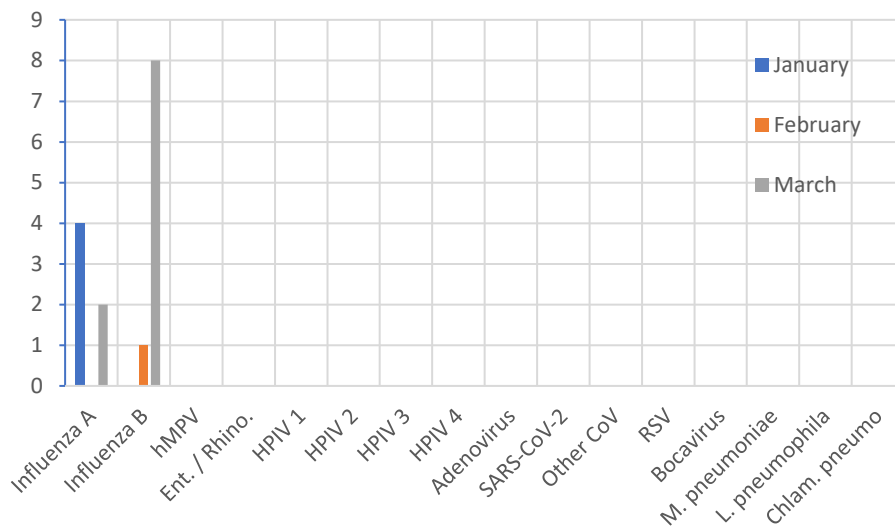


**Figure 6:** Specimens tested using molecular methods.

*Note: Height of bar indicates number of specimens tested.*

*Dark orange bars indicate DNA/RNA detected by real-time PCR and/or nucleotide sequencing analysis, blue indicates inconclusive results.*

## Respiratory Infections



**Figure 7:** Respiratory pathogens detected using a Respiratory Pathogen Panel (RPP) and/or RT-PCR Influenza and Covid-19 assays.