



CITY OF MILWAUKEE HEALTH DEPARTMENT

Clinical Services and Data and Evaluation Divisions
N. Broadway, Third Floor, Milwaukee, WI 53202, (414) 286-3521

Milwaukee Respiratory Illness Update MMWR Week 9, Ending March 4, 2023

Table of Contents

Page 1	Overview	Page 4	Influenza Testing Data
	National Pediatric Deaths		CDC National Influenza Surveillance Map
Page 2	Statewide & Regional Influenza Activity	Page 5	WHO Global Influenza Surveillance Map
	Respiratory Virus Laboratory Surveillance	Page 6	COVID-19 Activity
Page 3	Milwaukee County Influenza Activity	Page 7	SARS-CoV-2 Wastewater Surveillance

Overview

County

- There were zero of influenza-associated hospitalization reported in Milwaukee County during the week ending in March 4, 2023. From October 1, 2022 through March 4, 2023, there have been 694 reported influenza-associated hospitalizations in Milwaukee County (503 City of Milwaukee residents).

State

- Influenza-like illness (ILI) levels continued to remain below baseline both statewide and in the southeastern region of the state.
- Outpatient ILI activity and the percent positive influenza lab tests continue to decline in Wisconsin.
- Rhinovirus/enterovirus is the predominant virus for this week.
- Human metapneumovirus activity is continuing to increase in Wisconsin.

National

- 4 states/jurisdictions experienced moderate ILI activity and 3 experienced high ILI activity. Wisconsin had minimal ILI activity in outpatient visits.
- 8 influenza-associated pediatric deaths were reported during this week.
- The predominant influenza type is influenza A(H3N2).

Influenza Vaccine Composition 2022-2023 Influenza Season

All standard-dose flu shots will be quadrivalent (no trivalent standard-dose flu shots will be available this season). The quadrivalent vaccines for use in the 2022-2023 influenza season contain the following:

- an A/Victoria/2570/2019 (H1N1)pdm09-like virus;
- an A/Darwin/9/2021 (H3N2)-like virus;
- a B/Austria/1359417/2021-like virus (B/Victoria lineage); and
- a B/Phuket/3073/2013-like virus (B/Yamagata lineage)

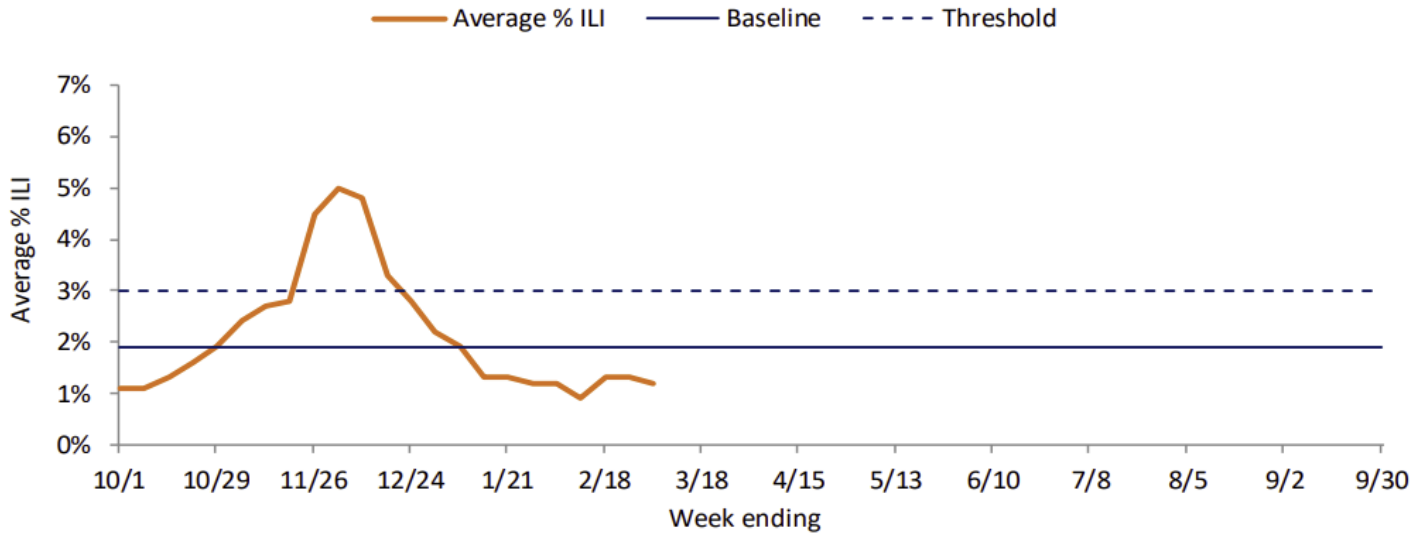
CDC Pediatric Data (Since Week 40)

2022-23 To Date: Total Deaths	2021-22 To Date: Total Deaths	Pediatric Deaths Reported this Week	Notes on Deaths	Unusual Pediatric Hospitalizations
125	45	8	The deaths occurred between week 43 of 2022 (the week ending October 29, 2022) and week 8 of 2023 (the week ending February 25, 2023). All eight deaths were associated with influenza A viruses. Four of the influenza A viruses had subtyping performed; all four were A(H3) viruses.	-

Statewide and Regional Influenza Activity

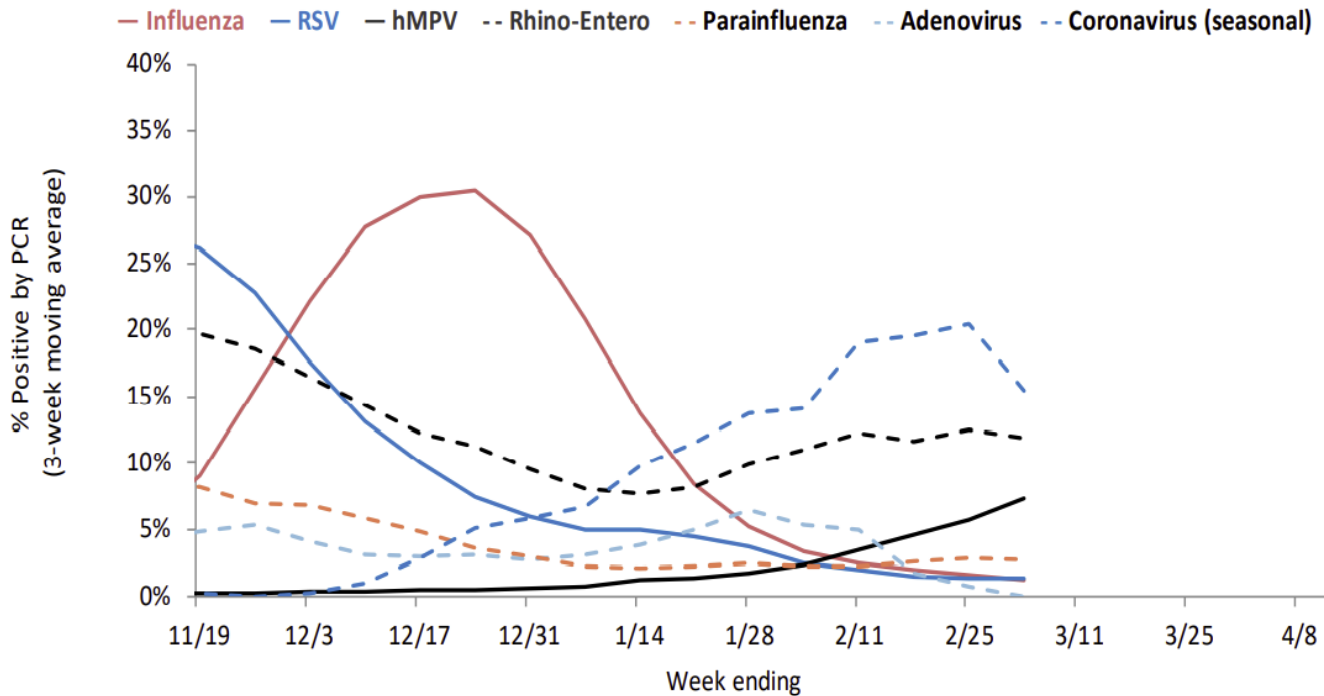
Influenza-like illness levels were below baseline statewide and in the southeastern region of the state.

Southeastern Region Influenza-Like Illness Activity Southeastern Region



[Wisconsin Department of Health Services Respiratory Virus Surveillance Report](#), March 4, 2023

Respiratory Virus Laboratory Surveillance



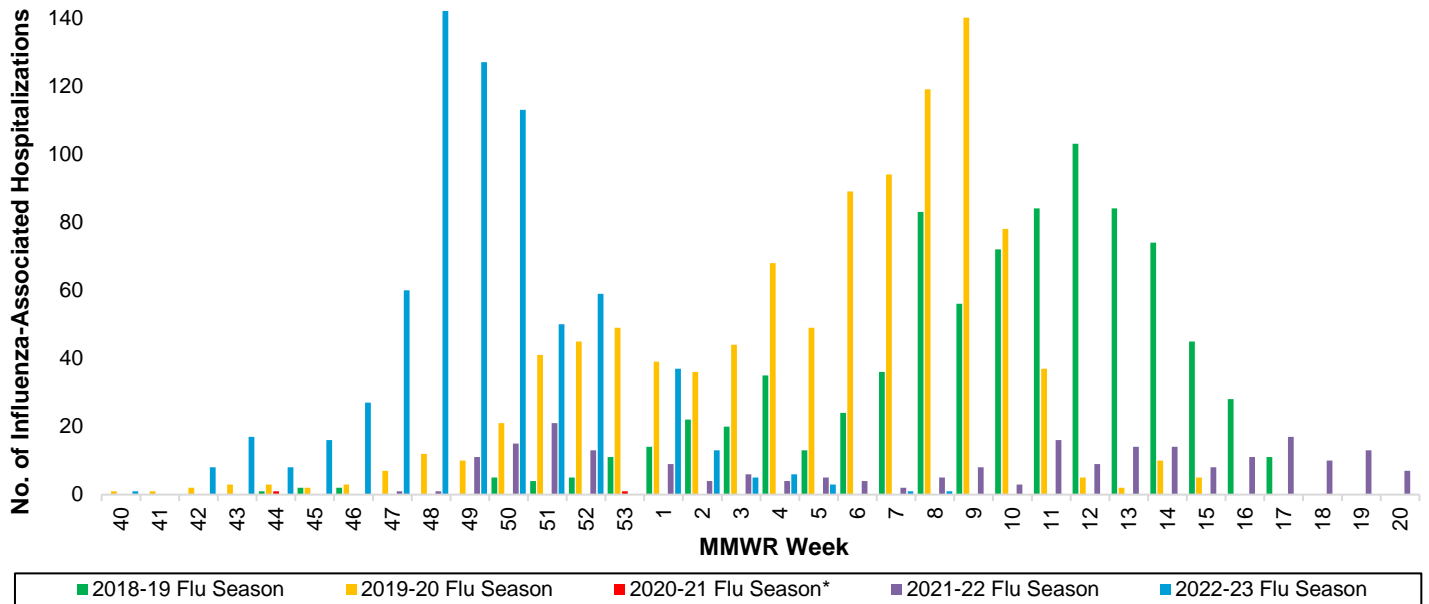
RSV = respiratory syncytial virus, hMPV = human metapneumovirus
[Wisconsin Department of Health Services Respiratory Virus Surveillance Report](#), March 4, 2023

Milwaukee County Influenza Activity

From October 1, 2022 through March 4, 2023 there have been 694 reported influenza-associated hospitalizations in Milwaukee County. Statewide hospitalization data are not yet available.

Milwaukee County Influenza-Associated Hospitalizations

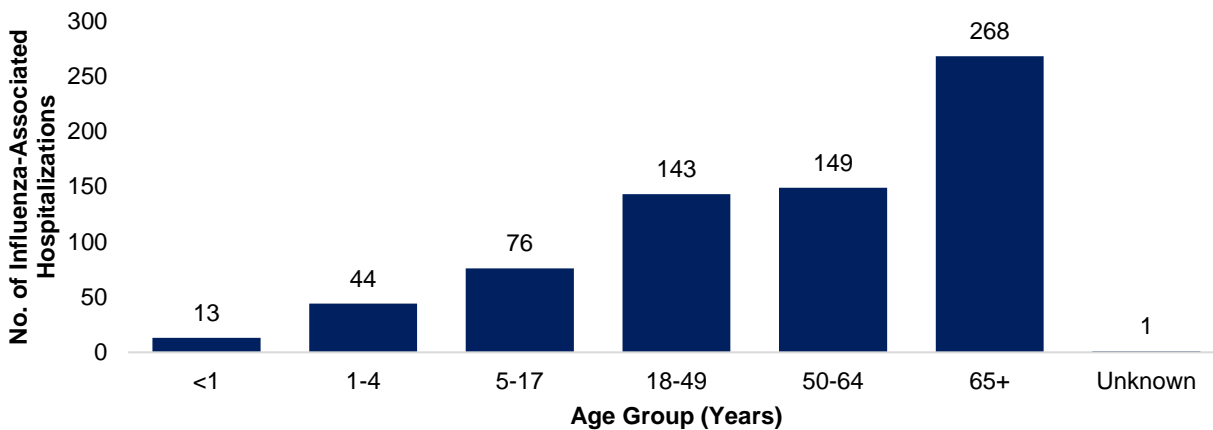
Influenza Activity by Week in Milwaukee County



*Flu activity was unusually low in the 2020-2021 flu season, despite high levels of testing. COVID-19 mitigation measures such as wearing face masks, social distancing, staying home, and school closures, in addition to flu vaccination, likely contributed to the low flu activity during this season.

Milwaukee County Influenza-Associated Hospitalizations by Age Group MMWR Week 40, 2022 through Week 8, 2023

Cumulative Influenza Activity by Age Group, Milwaukee County, 2022-23 Flu Season



Influenza Testing Data

Public Health Laboratory Influenza Testing Data To-Date (Since Week 40)

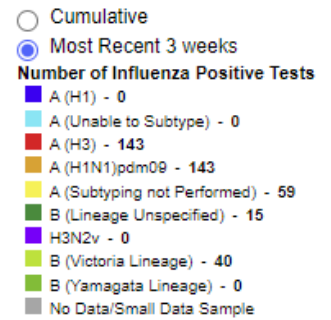
Lab	Number Tested to date	Number Positive to date	Most Recent Week Percent Positive	Predominant A Subtype and Strain	Predominant B Strain	Predominant Type (A or B)
CDC	195,177	27,866	88/ 6,414 (1.4%)	H3N2	Victoria	A
WSLH			112/11,435 (1.0%)	Unknown	Unknown	A
MHDL	52	10	0/2 (0.0%)	H3N2	N/A	A

National Influenza Testing Data, CDC FluView

Influenza Positive Tests Reported to CDC by Public Health Laboratories, National Summary, 2022-23 Season, week ending Mar 04, 2023

Reported by: U.S. WHO/NREVSS Collaborating Laboratories and ILINet

[Download Image](#)

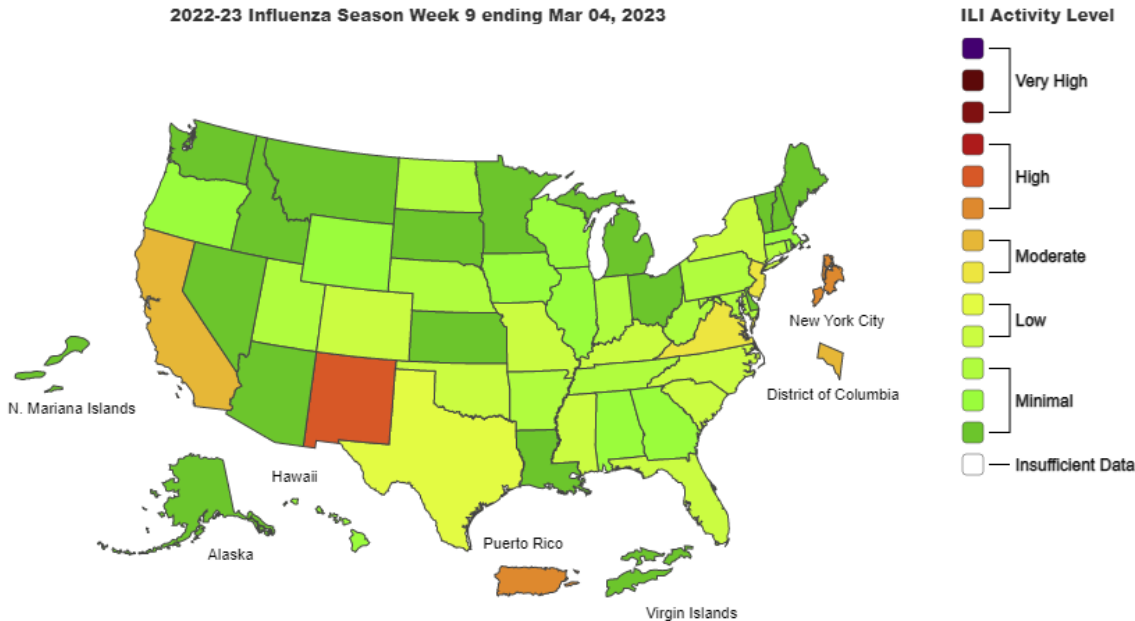


<http://gis.cdc.gov/grasp/fluview/fluportaldashboard.html> accessed 3/17/2023

National Influenza Activity

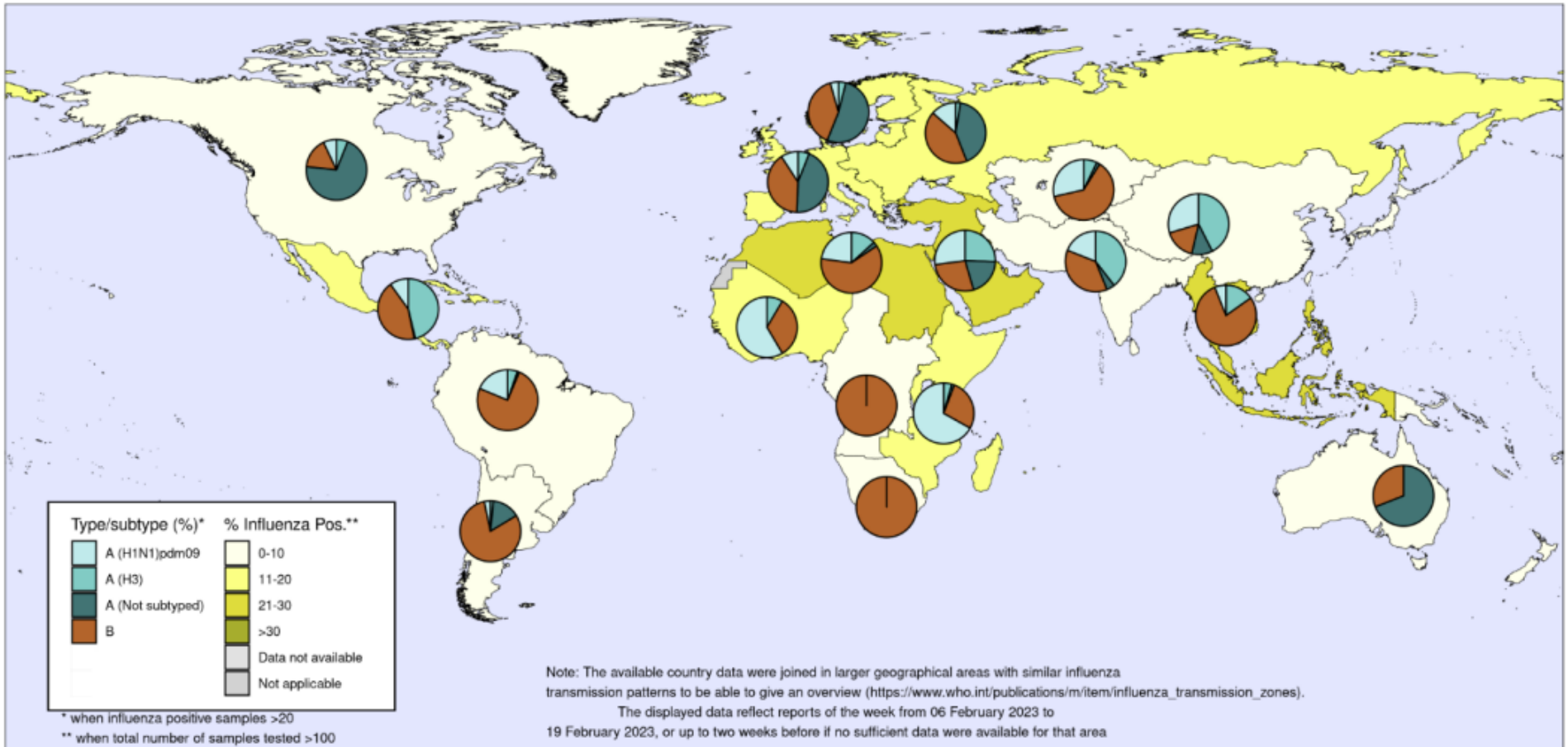
Outpatient Respiratory Illness Activity Map, CDC FluView

2022-23 Influenza Season Week 9 ending Mar 04, 2023



<https://www.cdc.gov/flu/weekly/index.htm#MS2> accessed 3/17/2023

Percentage of respiratory specimens that tested positive for influenza, by influenza transmission zone¹. Map generated on 02 March 2023.



The boundaries and names shown and the designations used on this map do not imply the expression of any opinion whatsoever on the part of the World Health Organization concerning the legal status of any country, territory, city or area or of its authorities, or concerning the delimitation of its frontiers or boundaries. Dotted and dashed lines on maps represent approximate border lines for which there may not yet be full agreement.



Data source: Global Influenza Surveillance and Response System (GISRS), FluNet (<https://www.who.int/initiatives/global-influenza-surveillance-and-response-system>)
 Copyright WHO 2023. All rights reserved.

<https://www.who.int/teams/global-influenza-programme/surveillance-and-monitoring/influenza-updates> accessed 3/17/2023

COVID-19 Activity

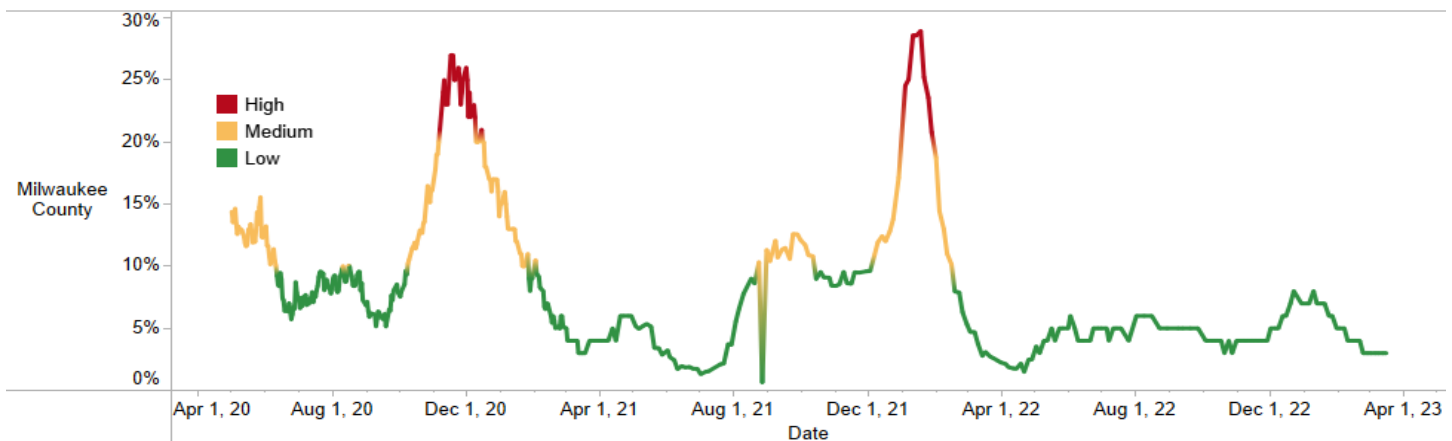
City of Milwaukee Overview

- From March 1, 2020 through March 16, 2023, there have been 180,770 reported confirmed positive COVID-19 cases and 1,120 COVID-19 associated deaths in the City of Milwaukee.
- Considering vaccination status, as of March 16, 2023:
 - 54.9% of city residents have completed their primary COVID-19 vaccination series
 - 30.2% of city residents have received at least one COVID-19 booster

COVID-19 Community Metrics, Updated March 17, 2023

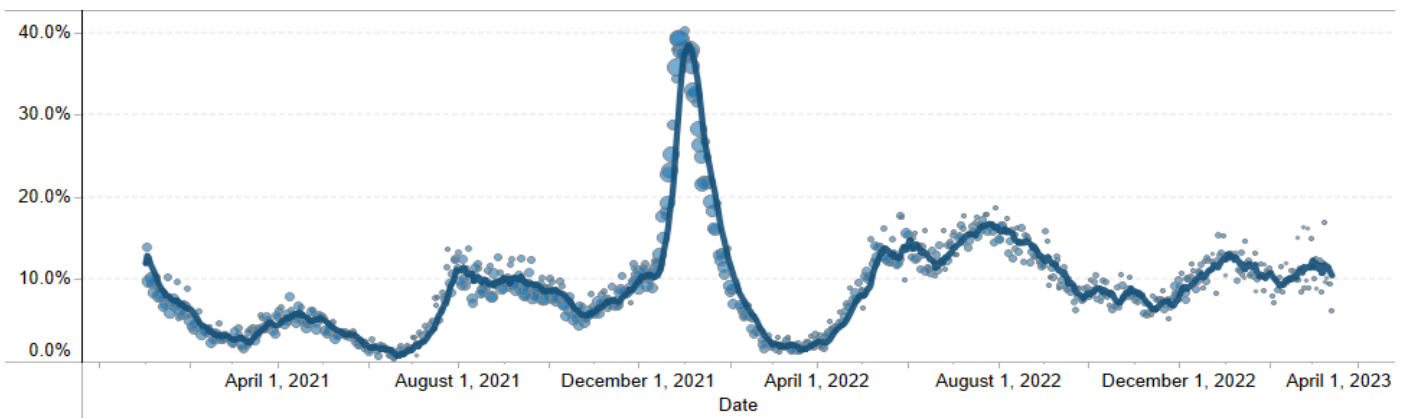
COVID-19 Community Level - Low		
<u>County</u> Weekly Metrics Used to Determine the COVID-19 Community Level	Comparison to Last Week	
Case Rate per 100,000 population (Milwaukee County; includes City rate of <u>63.5</u>)	69.47	Down from 73.81
New COVID-19 admissions per 100,000 population	8.3	Up from 7
% Staffed inpatient beds in use by patients with confirmed COVID-19	2.9%	Down from 3.1%

Hospitalized Patients that are COVID-19 Positive, Milwaukee County



Data Source: HERC Region 7
Last Update: 3/16/2023

Percent Positive COVID-19 Tests, City of Milwaukee



Please Note: Positivity is presented as positivity by PCR testing only. Changes to testing policies over time and rising usage of at-home tests as opposed to laboratory-based tests may affect positivity rates and incidence rates and should be interpreted accordingly.

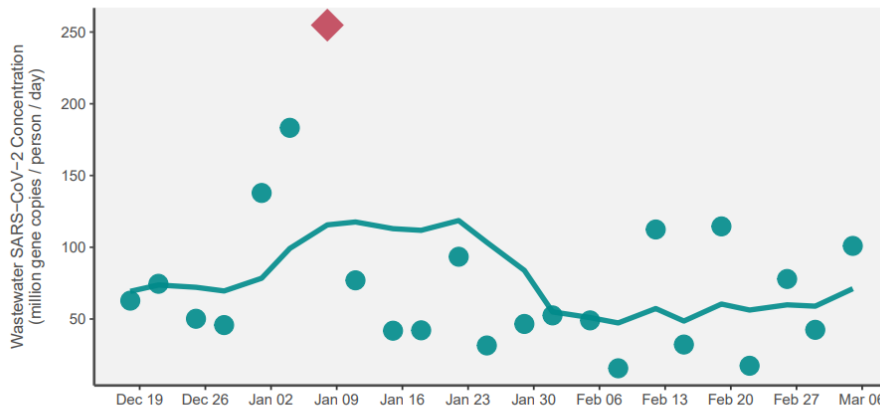
SARS-CoV-2 Wastewater Surveillance

Category: Compared with the last 6 months of data, the average of the three most recent SARS-CoV-2 measurements is **high** for both the Jones Island and South Shore sewersheds.

Trajectory: Between 2/22/2023 and 3/8/2023, wastewater concentrations of SARS-CoV-2 **did not significantly** increase in the Jones Island sewershed but **significantly increased** in the South Shore sewershed.

Milwaukee (Jones Island) ■ Estimated population served: 470,007	Category:	Trajectory:
	High	No alert

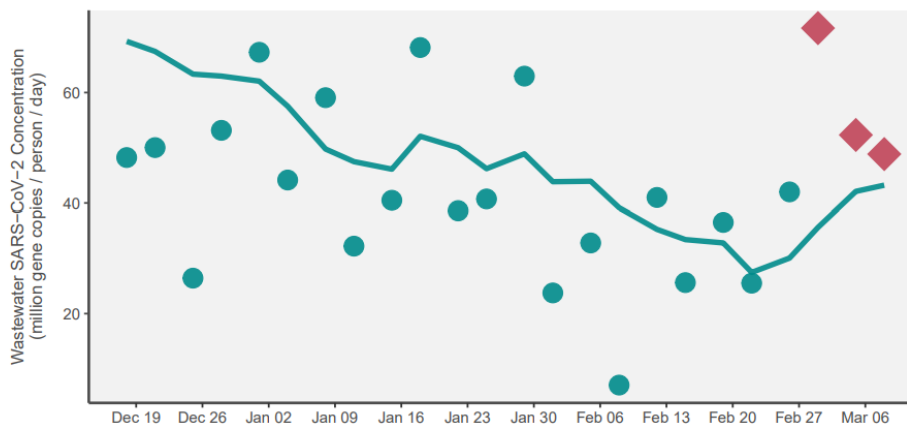
90-Day Wastewater Trend for Milwaukee Jones Island (Dec 16, 2022–Mar 16, 2023)



◆ - Significant Increase

Milwaukee (South Shore) ■ Estimated population served: 615,934	Category:	Trajectory:
	High	Significant increase

90-Day Wastewater Trend for Milwaukee South Shore (Dec 16, 2022–Mar 16, 2023)



◆ - Significant Increase