

# Milwaukee Respiratory Virus Surveillance Update

## MMWR Week 21, Ending May 27, 2023

### Contents

Overview . . . . .	2
Statewide and Regional Influenza Activity . . . . .	3
Respiratory Virus Laboratory Surveillance . . . . .	3
Milwaukee County Influenza Activity . . . . .	4
Influenza Testing Data . . . . .	5
National Influenza Activity . . . . .	5
Global Influenza Activity . . . . .	6
COVID-19 Activity . . . . .	7
SARS-CoV-2 Wastewater Surveillance . . . . .	8

## Overview

### County

- There were 0 influenza-associated hospitalizations reported in Milwaukee County during the week ending in May 27, 2023. From October 1, 2022 through May 27, 2023, there have been 644 reported influenza-associated hospitalizations in Milwaukee County (471 City of Milwaukee residents).

### State

- Influenza-like illness (ILI) levels continued to remain below baseline both statewide and in the southeastern region of the state.
- Outpatient ILI activity continues to decline in Wisconsin. The percent positive influenza lab tests decreased slightly to 0.7%.
- Rhinovirus/Enterovirus is the predominant virus for this week. Non-COVID respiratory outbreaks in long term care facilities continue to be reported. Human metapneumovirus and parainfluenza-3 have been reported most frequently in these outbreaks.

### National

- Seasonal influenza activity remains low nationally. One state/jurisdiction experienced moderate ILI activity and one experienced high ILI activity. Wisconsin had minimal ILI activity in outpatient visits.
- 0 influenza-associated pediatric deaths were reported during this week.
- Influenza B viruses were the most frequently reported this week.

**Influenza Vaccine Composition 2022-2023 Influenza Season** All standard-dose flu shots will be quadrivalent (no trivalent standard-dose flu shots will be available this season). The quadrivalent vaccines for use in the 2022-2023 influenza season contain the following:

- an A/Victoria/2570/2019 (H1N1)pdm09-like virus;
- an A/Darwin/9/2021 (H3N2)-like virus;
- a B/Austria/1359417/2021-like virus (B/Victoria lineage); and
- a B/Phuket/3073/2013-like virus (B/Yamagata lineage)

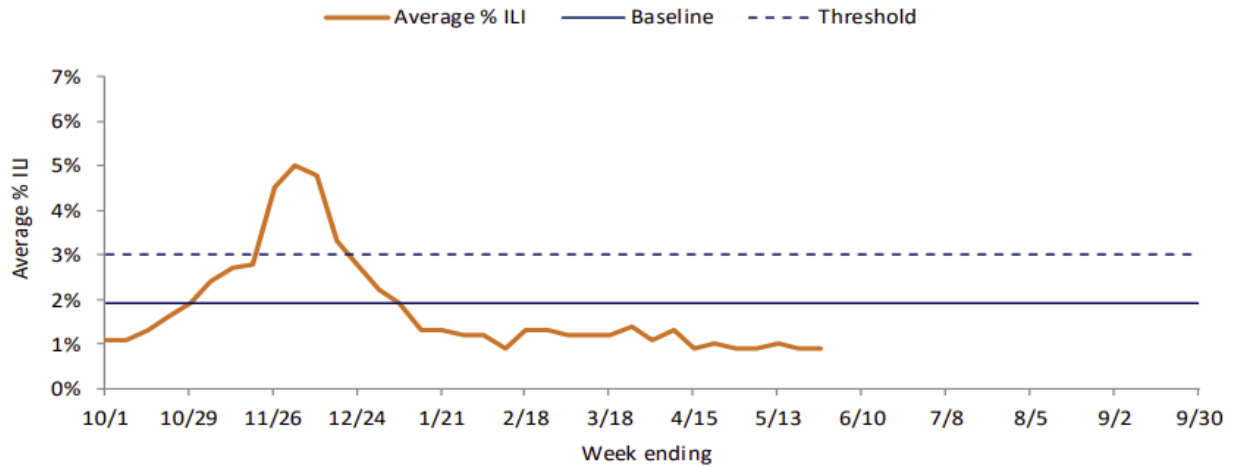
### CDC Pediatric Data (Since Week 40)

<b>2022-23 To Date: Total Deaths</b>	<b>2021-22 To Date: Total Deaths</b>	<b>Pediatric Deaths Reported This Week</b>	<b>Notes on Deaths</b>
154	46	0	No influenza-associated pediatric deaths were reported to CDC during week 21.

## Statewide and Regional Influenza Activity

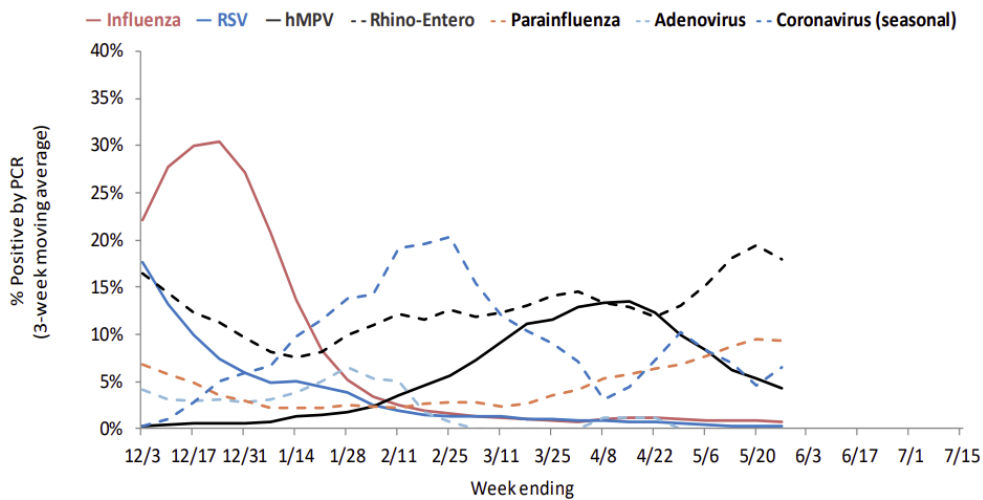
Influenza-like illness levels were below baseline statewide and in the southeastern region of the state.

### Southeastern Region



Wisconsin Department of Health Services Respiratory Virus Surveillance Report, May 27, 2023

## Respiratory Virus Laboratory Surveillance



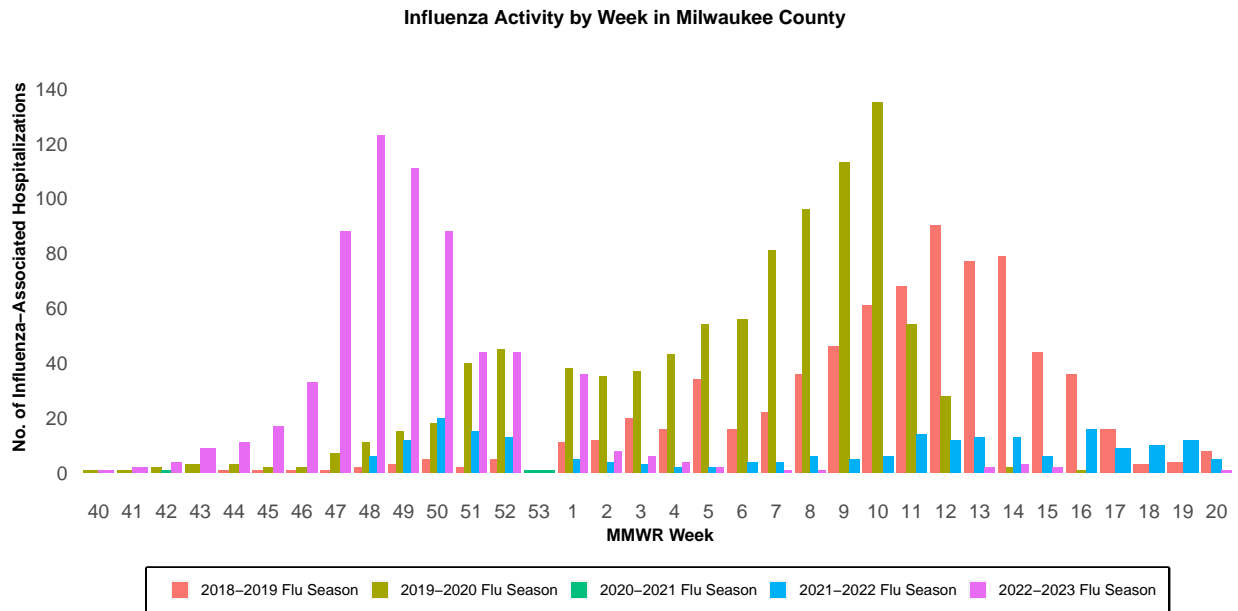
RSV = respiratory syncytial virus, hMPV = human metapneumovirus

Wisconsin Department of Health Services Respiratory Virus Surveillance Report, May 27, 2023

## Milwaukee County Influenza Activity

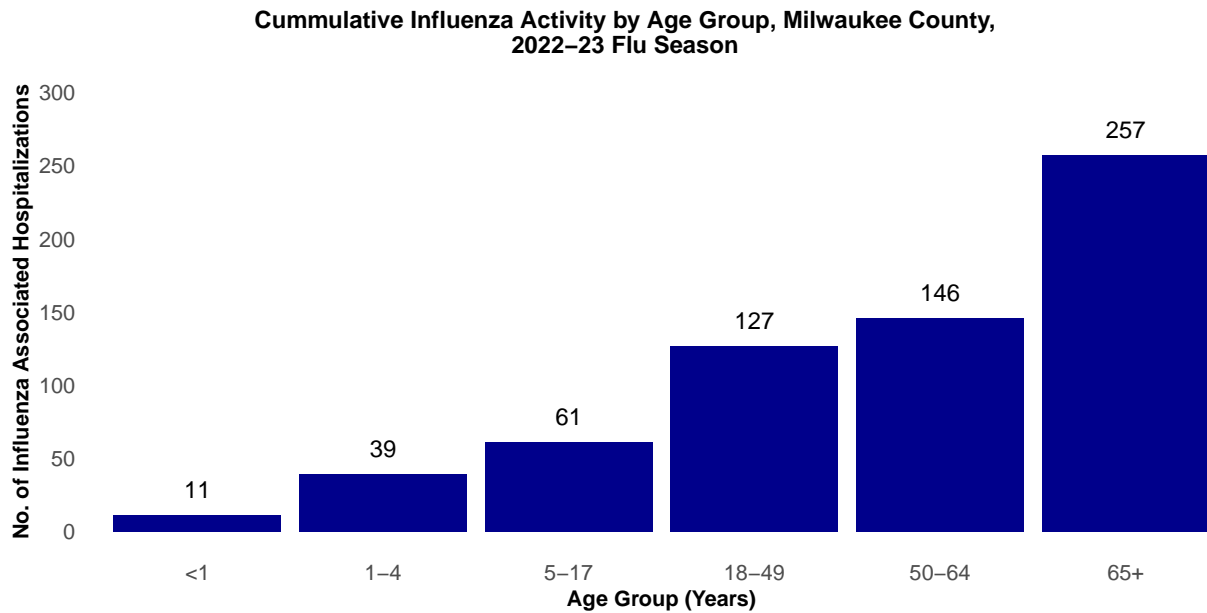
From October 1, 2022 through May 27, 2023 there have been 644 reported influenza-associated hospitalizations in Milwaukee County. Statewide hospitalization data are not yet available.

### Milwaukee County Influenza-Associated Hospitalizations



\*Flu activity was unusually low in the 2020-2021 flu season, despite high levels of testing. COVID-19 mitigation measures such as wearing face masks, social distancing, staying home, and school closures, in addition to flu vaccination, likely contributed to the low flu activity during this season.

### Milwaukee County Influenza-Associated Hospitalizations by Age Group MMWR Week 40, 2022 through Week 21, 2023



## Influenza Testing Data

### Public Health Laboratory Influenza Testing Data To-Date (Since Week 40)

Lab	Number Tested to date	Number Positive to date	Most Recent Week Percent Positive	Predominant A Subtype and Strain	Predominant B Strain	Predominant Type (A or B)
CDC	251,355	29,497	43/2,628(1.6%)	(H1N1)pdm09	Victoria	B
WSLH	-	-	23/3,519(0.7%)	Unknown	Unknown	A
MHDL	74	10	0/4(0.0%)	H3N2	N/A	A

### National Influenza Testing Data, CDC FluView

Influenza Positive Tests Reported to CDC by Public Health Laboratories, National Summary, 2022-23 Season, week ending May 27, 2023

Reported by: U.S. WHO/NREVSS Collaborating Laboratories and ILINet

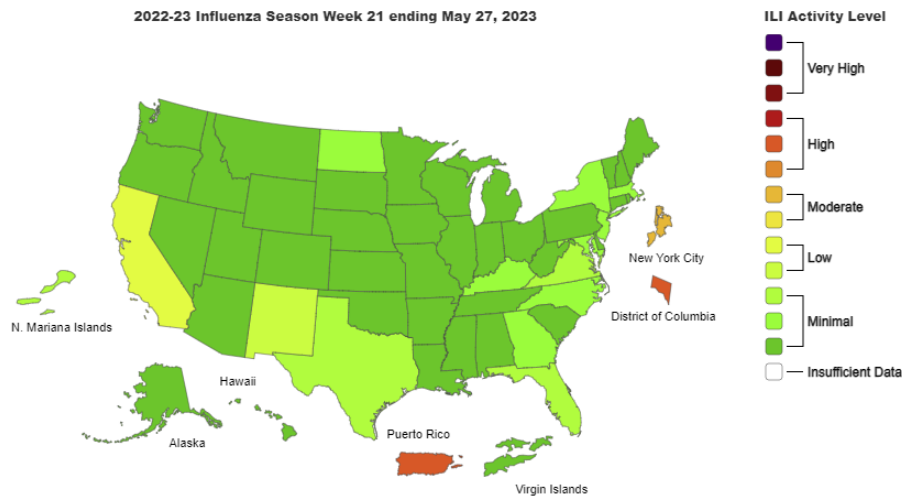
[Download Image](#) ?



<http://gis.cdc.gov/grasp/fluview/fluportaldashboard.html> accessed 06/07/2023

## National Influenza Activity

### Outpatient Respiratory Illness Activity Map, CDC FluView

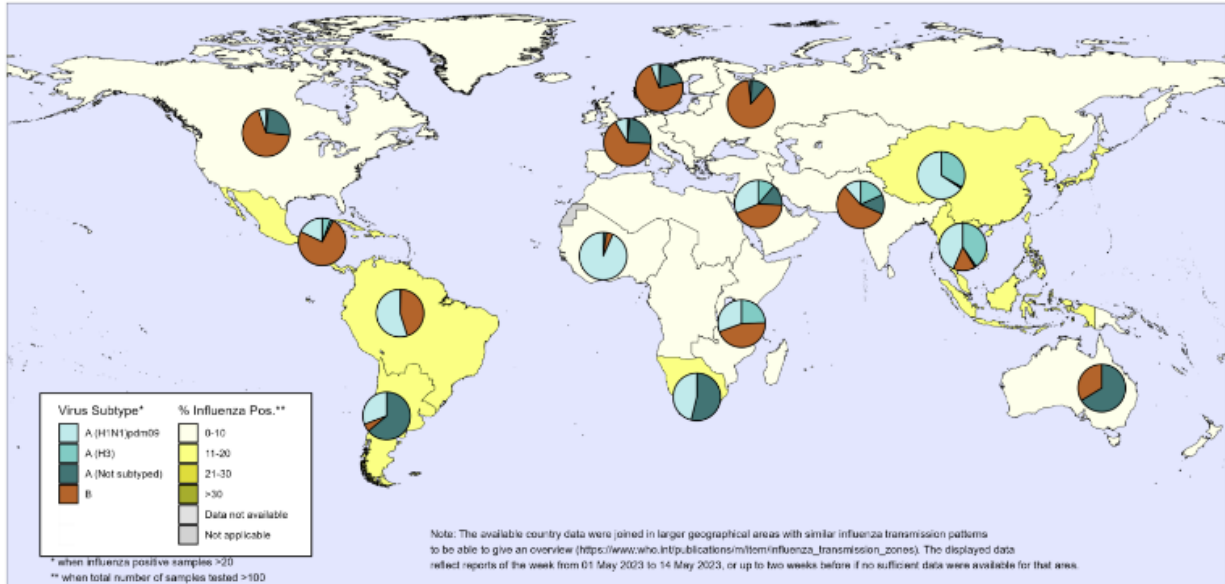


<https://www.cdc.gov/flu/weekly/index.htm#MS2> accessed 06/07/2023

## Global Influenza Activity

### Percentage of respiratory specimens that tested positive for influenza By influenza transmission zone

Map generated on 26 May 2023

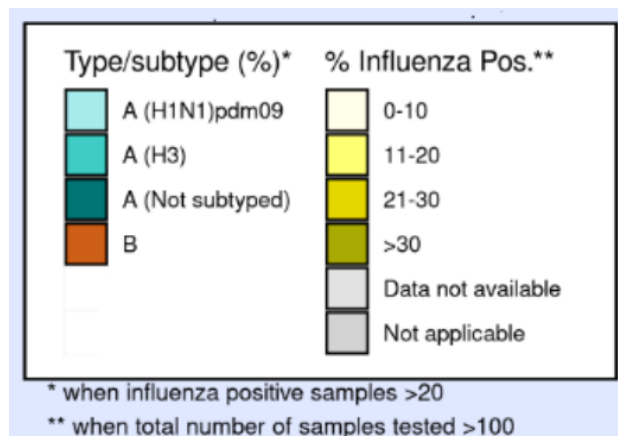


The boundaries and names shown and the designations used on this map do not imply the expression of any opinion whatsoever on the part of the World Health Organization concerning the legal status of any country, territory, city or area or of its authorities, or concerning the delimitation of its frontiers or boundaries. Dotted and dashed lines on maps represent approximate border lines for which there may not yet be full agreement.



Data source: Global Influenza Surveillance and Response System (GISRS), FluNet ([www.who.int/tools/fluinet](http://www.who.int/tools/fluinet))  
Copyright WHO 2023. All rights reserved.

<https://www.who.int/teams/global-influenza-programme/surveillance-and-monitoring/influenza-updates>, accessed 06/07/2023



- Globally, influenza activity continued to decrease due to decreased activity in the northern hemisphere. Some countries in the southern hemisphere reported increased influenza activity in recent weeks.
- In the U.S., influenza and RSV activity remained low. The percentage of deaths attributed to pneumonia, influenza, or COVID-19 remained just above the epidemic threshold, with the majority of recent mortality attributed to COVID-19.

## COVID-19 Activity

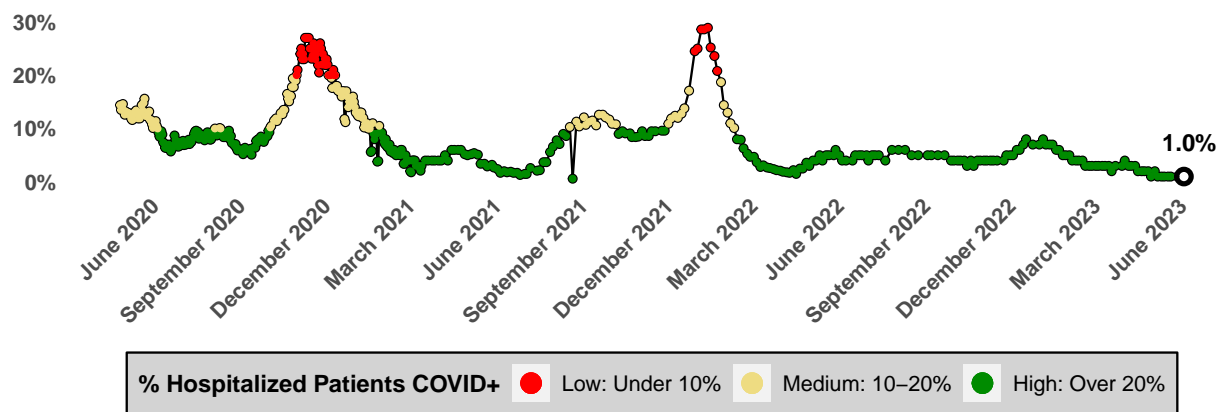
### City of Milwaukee Overview

- From March 1, 2020 through June 8, 2023, there have been 177877 reported confirmed positive COVID-19 cases and 1120 COVID-19 associated deaths in the City of Milwaukee.
- Considering vaccination status, as of June 8, 2023:
  - 55.6% of city residents have completed their primary COVID-19 vaccination series
  - 29.3% of city residents have received at least one COVID-19 booster

### COVID-19 Hospital Admission Metrics, Updated June 3, 2023

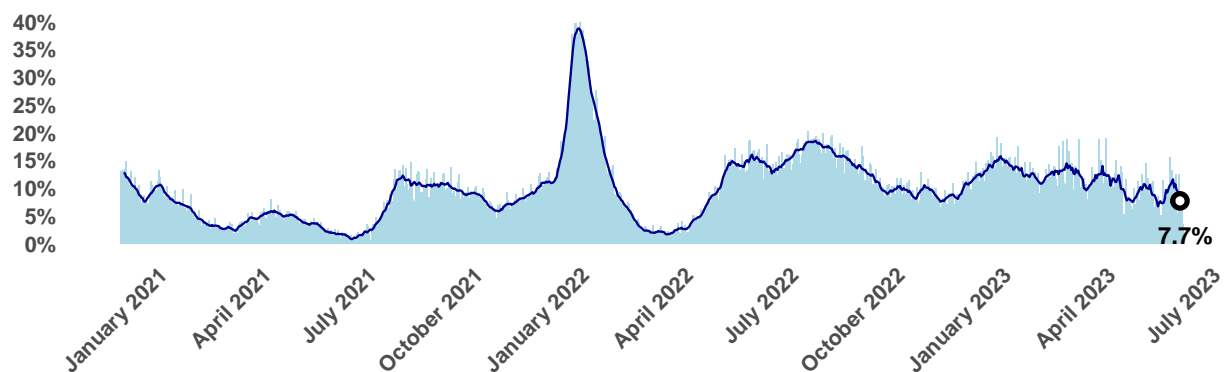
COVID-19 Hospital Admission Level - Low		
County Weekly Metrics Used to Determine the COVID-19 Hospital Admission Level		Comparison to Prior Week
New hospital admissions of confirmed COVID-19, past week (total)	40	Down from 49
New COVID-19 admissions per 100,000 population	2.5	Down from 3.1
% Staffed inpatient beds occupied by patients with confirmed COVID-19 past week (average)	1.4%	Up from 1.3%

### Hospitalized Patients that are COVID-19 Positive Timeline, Milwaukee County



Data Source: HERC Region 7  
Last Update: 2023-06-08

### Percent Positive COVID-19 Tests by Day with 7-Day Rolling Average, City of Milwaukee



Please Note: Positivity is presented as positivity by PCR testing only. Changes to testing policies over time and rising usage of at-home tests as opposed to laboratory-based tests may affect positivity rates and incidence rates and should be interpreted accordingly.

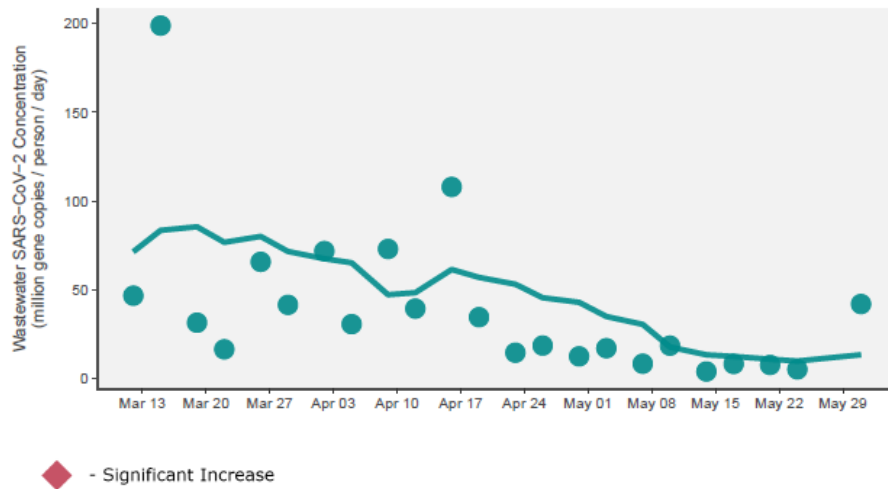
## SARS-CoV-2 Wastewater Surveillance

**Category:** Compared with the last 6 months of data, the average of the three most recent SARS-CoV-2 measurements is *very low* for Jones Island and *very low* for the South Shore sewershed.

**Trajectory:** Between 05/14/2023 and 05/31/2023, wastewater concentrations of SARS-CoV-2 *did not significantly increase* in the Jones Island or South Shore sewersheds.

<b>Milwaukee (Jones Island)</b> Estimated population served: 470,007	Category: <b>Very low</b>	Trajectory: <b>No alert</b>
-------------------------------------------------------------------------	------------------------------	--------------------------------

90-Day Wastewater Trend for Milwaukee Jones Island (Mar 10, 2023–Jun 8, 2023)



<b>Milwaukee (South Shore)</b> Estimated population served: 615,934	Category: <b>Very low</b>	Trajectory: <b>No alert</b>
------------------------------------------------------------------------	------------------------------	--------------------------------

90-Day Wastewater Trend for Milwaukee South Shore (Mar 10, 2023–Jun 8, 2023)

