

# Milwaukee Respiratory Virus Surveillance Update

## MMWR Week 5, Ending February 3, 2024

### Contents

Overview . . . . .	2
Statewide and Regional Influenza Activity . . . . .	3
Respiratory Virus Laboratory Surveillance . . . . .	3
Milwaukee County Influenza Activity . . . . .	4
Influenza Testing Data . . . . .	5
National Influenza Activity . . . . .	5
Global Influenza Activity . . . . .	6
Influenza Vaccination Uptake by City of Milwaukee Residents, 2023-2024 Season . . . . .	7
Respiratory Illness Emergency Department Visits in Milwaukee County . . . . .	8
COVID-19 Activity . . . . .	9
SARS-CoV-2 Wastewater Surveillance . . . . .	10

## Overview

### County

- There were 10 influenza-associated hospitalizations reported in Milwaukee County during the week ending on February 3, 2024. From October 1, 2023 through February 3, 2024, there have been 405 reported influenza-associated hospitalizations in Milwaukee County (300 City of Milwaukee residents).

### State

- Influenza-like illness (ILI) activity increased slightly in the past week.
- Influenza, RSV, and COVID-19 continue to circulate across Wisconsin. Influenza is the predominant virus of the week.
- While COVID-19 activity has decreased, influenza B activity is increasing.

### National

- Seasonal influenza activity remains elevated nationally with increases in some parts of the country. This week 11 jurisdictions experienced moderate activity and 25 jurisdictions experienced high or very high activity.
- 8 influenza-associated pediatric deaths occurred during this week.
- Influenza A viruses were the most frequently reported this week.

**Influenza Vaccine Composition 2022-2023 Influenza Season** All standard-dose flu shots will be quadrivalent (no trivalent standard-dose flu shots will be available this season). The quadrivalent vaccines for use in the 2023-2024 influenza season contain the following:

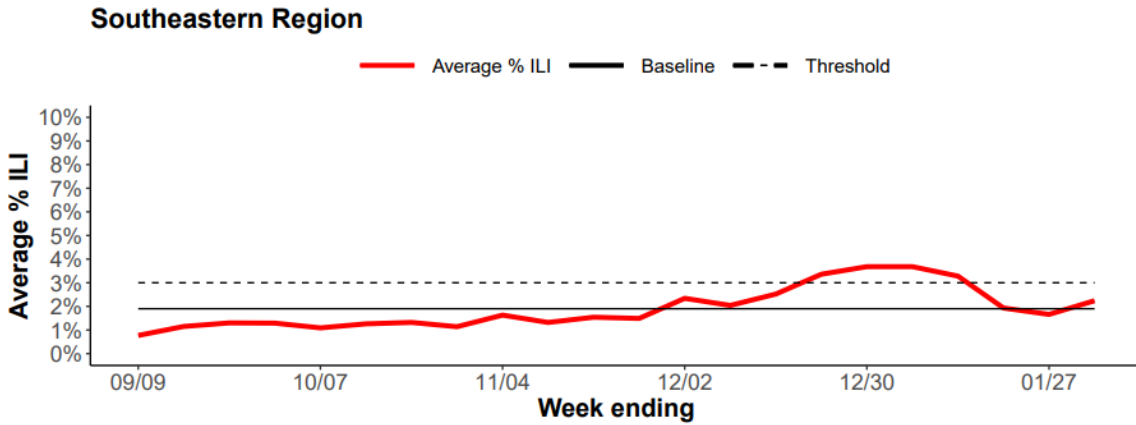
- an A/Victoria/4897/2022 (H1N1)pdm09-like virus;
- an A/Darwin/9/2021 (H3N2)-like virus;
- a B/Austria/1359417/2021 (B/Victoria lineage)-like virus; and
- a B/Phuket/3073/2013 (B/Yamagata lineage)-like virus

### CDC Pediatric Data (Since Week 40)

2023-24 To Date: Total Deaths	2022-23 To Date: Total Deaths	Pediatric Deaths This Week	Notes on Deaths
75	182	8	Eight influenza-associated pediatric deaths occurring during the 2023-2024 season were reported to CDC during Week 5. The deaths occurred between Week 51 of 2023 (the week ending December 23, 2023) and Week 5 of 2024 (the week ending February 3, 2024). Seven deaths were associated with influenza A viruses. Four of the influenza A viruses had subtyping performed; three were A(H1N1) viruses and one was an A(H3) virus. One death was associated with influenza B virus with no lineage determined.

## Statewide and Regional Influenza Activity

Influenza-like illness levels were above baseline statewide and above baseline in the southeastern region of the state.

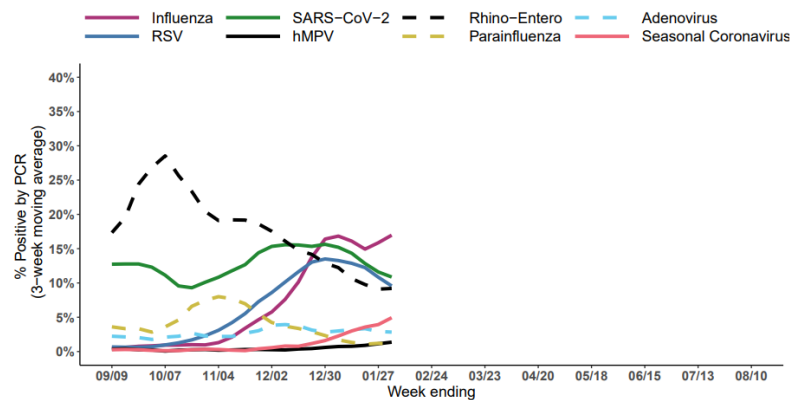


Wisconsin Department of Health Services Respiratory Virus Surveillance Report, February 3, 2024

## Respiratory Virus Laboratory Surveillance

### Wisconsin Laboratory Surveillance for Respiratory Viruses

Percent positivity of respiratory viruses tested by PCR, NREVSS



Number and percent positivity of respiratory viruses tested by PCR, NREVSS  
Week 5, Ending on February 03, 2024

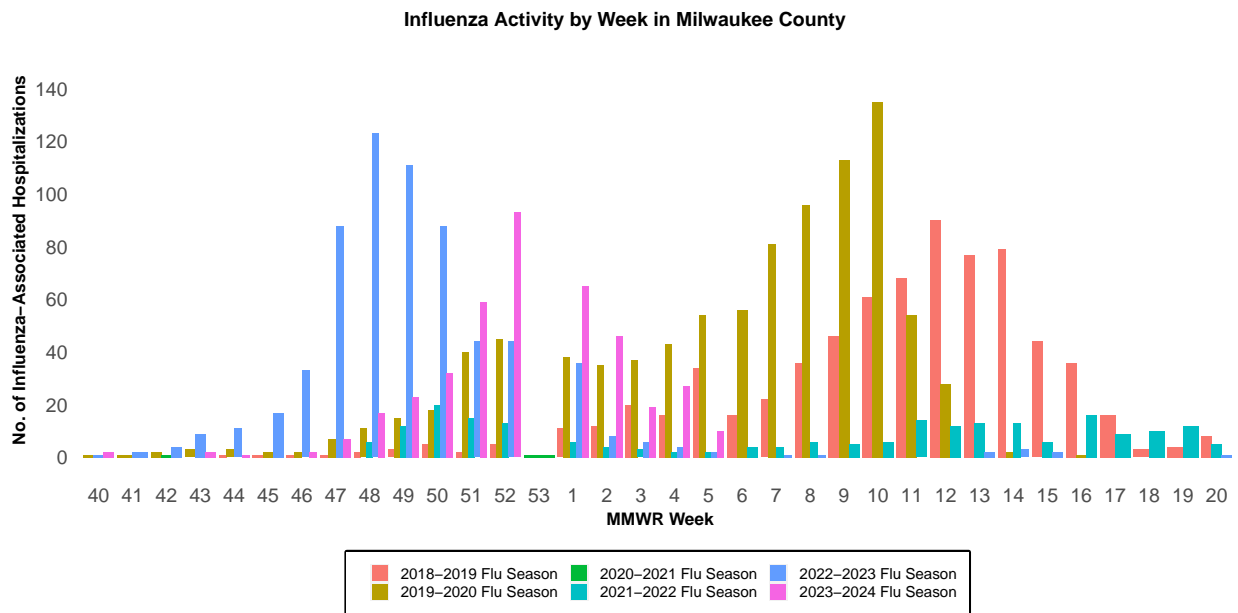
RSV = respiratory syncytial virus, hMPV = human metapneumovirus

Wisconsin Department of Health Services Respiratory Virus Surveillance Report, February 3, 2024

## Milwaukee County Influenza Activity

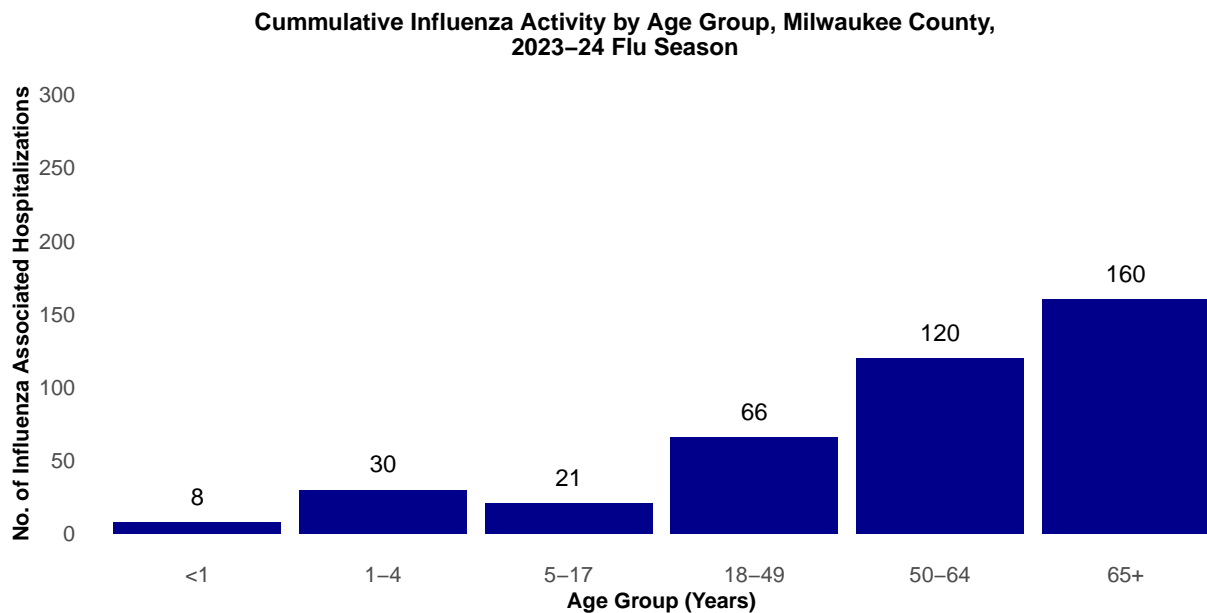
From October 1, 2023 through February 3, 2024 there have been 405 reported influenza-associated hospitalizations in Milwaukee County.

### Milwaukee County Influenza-Associated Hospitalizations



\*Flu activity was unusually low in the 2020-2021 flu season, despite high levels of testing. COVID-19 mitigation measures such as wearing face masks, social distancing, staying home, and school closures, in addition to flu vaccination, likely contributed to the low flu activity during this season.

### Milwaukee County Influenza-Associated Hospitalizations by Age Group MMWR Week 40, 2023 through Week 5, 2023

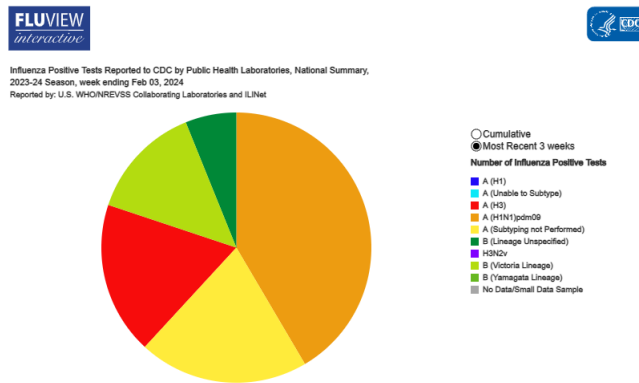


## Influenza Testing Data

### Public Health Laboratory Influenza Testing Data To-Date (Since Week 40)

Lab	Number Tested to date	Number Positive to date	Most Recent Week Percent Positive	Predominant A Subtype and Strain	Predominant B Strain	Predominant Type (A or B)
CDC	1,868,917	191,459	15,192/96,379(15.8%)	(H1N1)pdm09	Victoria	A
WSLH	-	-	1,886/10,104(18.7%)	Unknown	Unknown	A
MHDL	12	5	5/12(41.67%)	Unknown	Unknown	A

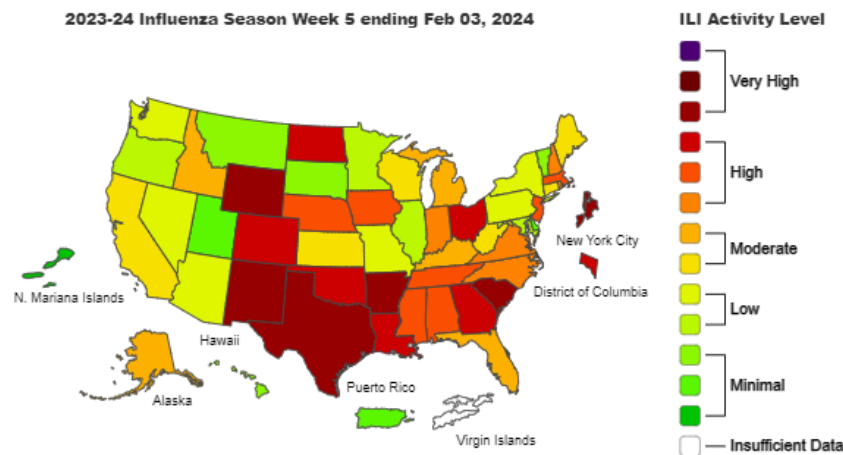
### National Influenza Testing Data, CDC FluView



<http://gis.cdc.gov/grasp/fluview/fluportaldashboard.html> accessed 02/9/2024

## National Influenza Activity

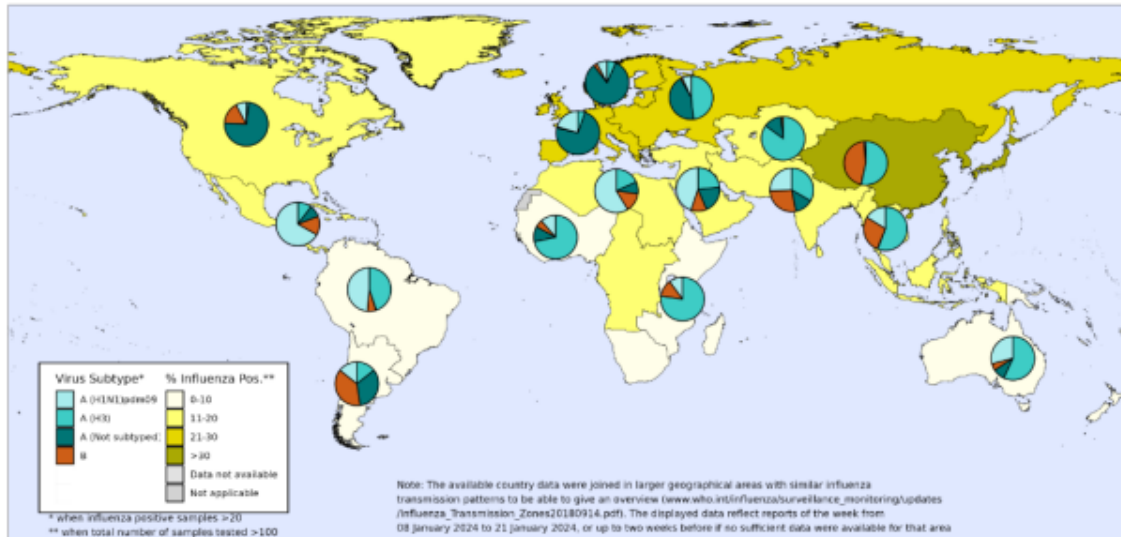
### Outpatient Respiratory Illness Activity Map, CDC FluView



<https://www.cdc.gov/flu/weekly/index.htm#MS2> accessed 02/9/2024

## Global Influenza Activity

**Percentage of respiratory specimens testing positive for influenza, by influenza transmission zone.<sup>1</sup> Map generated on 02 February 2024. (The displayed data reflect reports of the weeks from 08 January 2023 to 21 January 2024 or up to two weeks before if insufficient data were available for an area for that period.)**

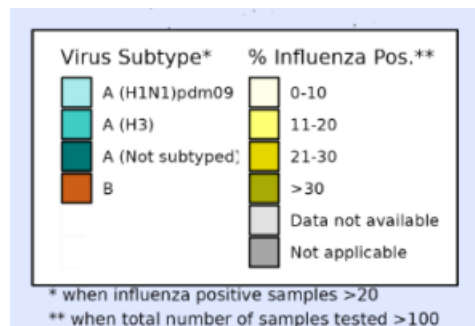


The boundaries and names shown and the designations used on this map do not imply the expression of any opinion whatsoever on the part of the World Health Organization concerning the legal status of any country, territory, city or area or of its authorities, or concerning the delimitation of its frontiers or boundaries. Dotted and dashed lines on maps represent approximate border lines for which there may not yet be full agreement.

Data source: Global Influenza Surveillance and Response System (GISRS), FluNet (www.who.int/flu-net)  
Copyright WHO 2024. All rights reserved.



<https://www.who.int/teams/global-influenza-programme/surveillance-and-monitoring/influenza-updates>, accessed 02/9/2024

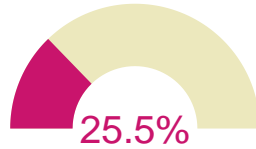


- Globally, SARS-CoV-2 positivity from sentinel surveillance remained around 10%. Positivity remained below 10% in all WHO Regions with exception of the European Region and the Region of the Americas where positivity was 20% and 15%, respectively. SARS-CoV-2 positivity from non-sentinel surveillance decreased to around 12% globally.
- In countries with RSV surveillance in place, RSV activity was stable or decreased in most reporting countries in Europe and in North America. In the Russian Federation and Republic of Korea, RSV activity increased but remained below or similar to expected levels. RSV activity remained high in Egypt. Activity was low or decreasing elsewhere.

# Influenza Vaccination Uptake by City of Milwaukee Residents, 2023-2024 Season

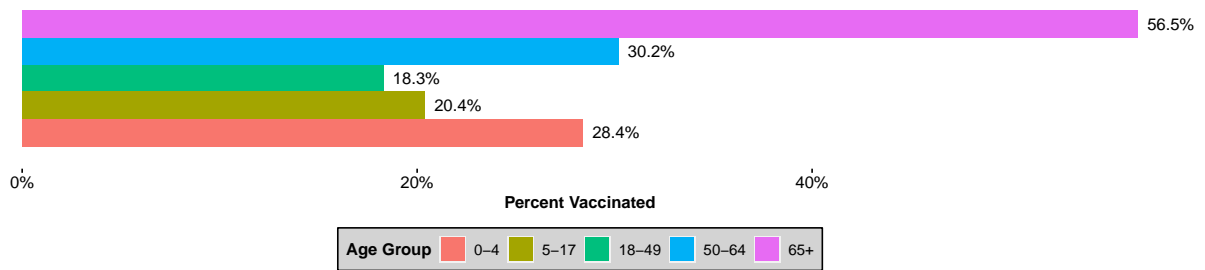
## Overview

- City of Milwaukee residents who have received at least one dose of flu vaccinations as of February 9, 2024:

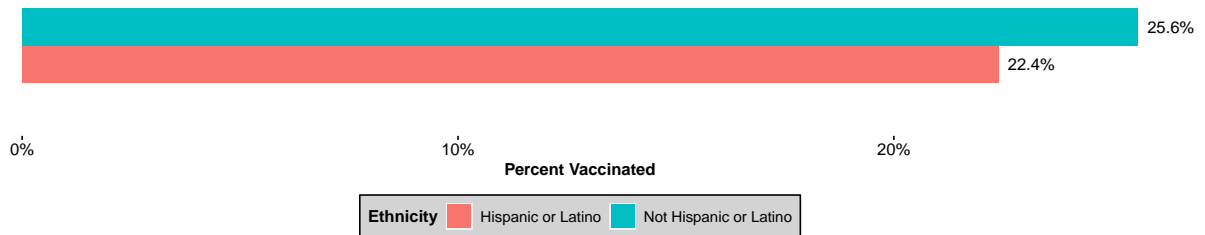


## Influenza Vaccination Coverage for 2023-2024 Season by Demographics

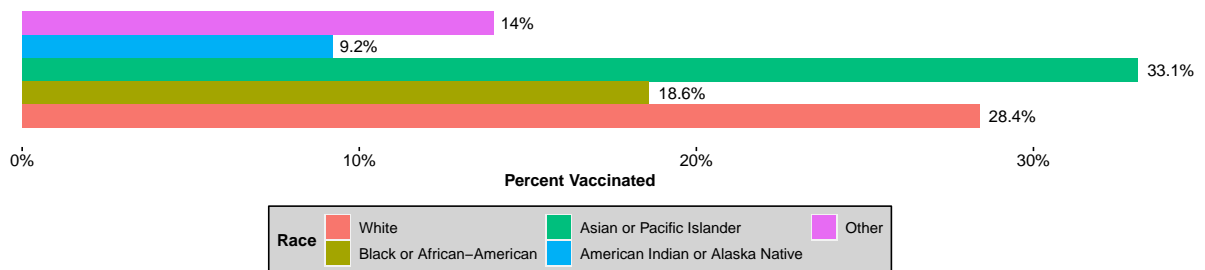
### Influenza Vaccinations by Age Group



### Influenza Vaccinations by Ethnicity

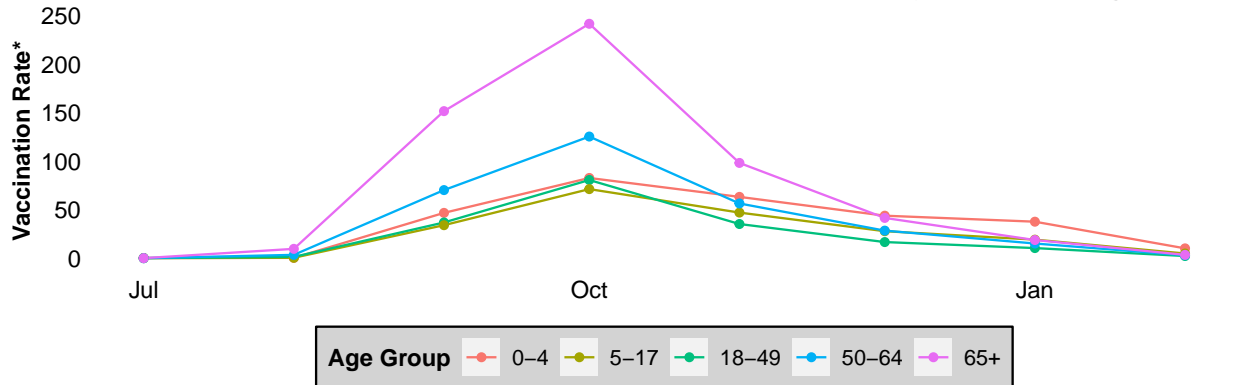


### Influenza Vaccinations by Race



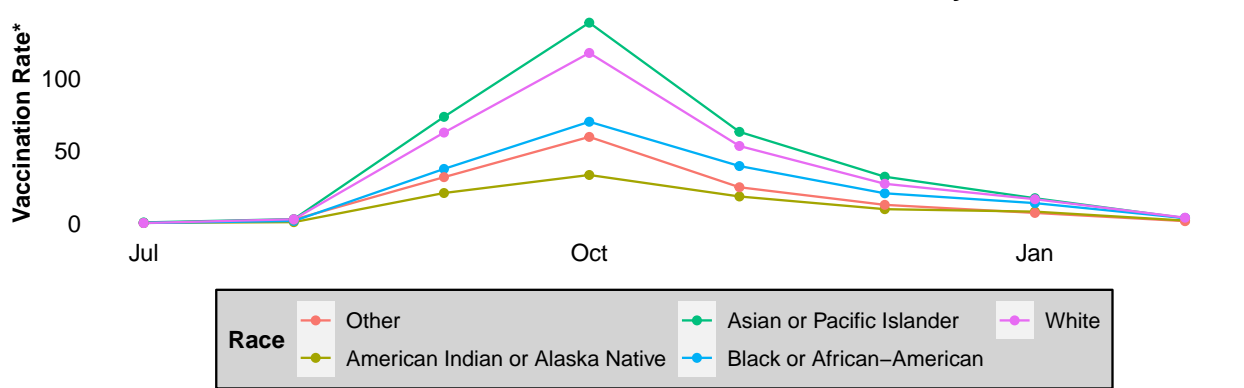
## Vaccination Uptake Timelines

### Influenza Vaccinations for Milwaukee Residents, 2023–24 Season by Month and Age Group



\*Vaccination rates are per 1000 residents using 2021 ACS 5-year population estimates

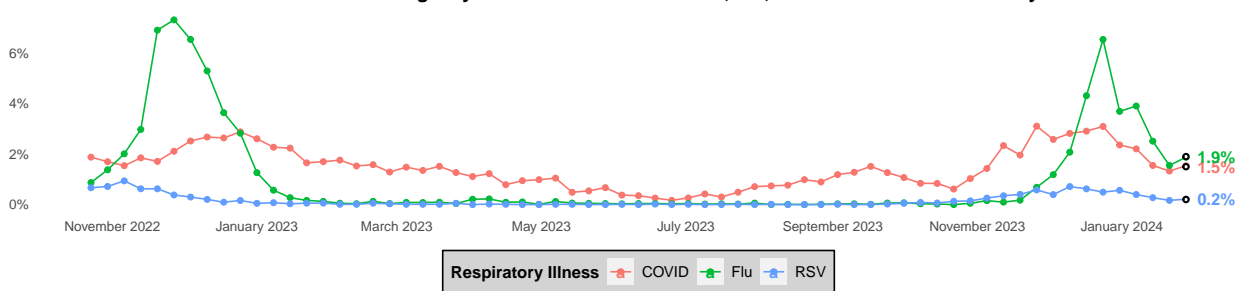
### Influenza Vaccinations for Milwaukee Residents, 2023–24 Season by Month and Race



\*Vaccination rates are per 1000 residents using 2021 ACS 5-year population estimates

## Respiratory Illness Emergency Department Visits in Milwaukee County

### Percent of All Emergency Room Visits Due to COVID, Flu, or RSV in Milwaukee County





## COVID-19 Activity

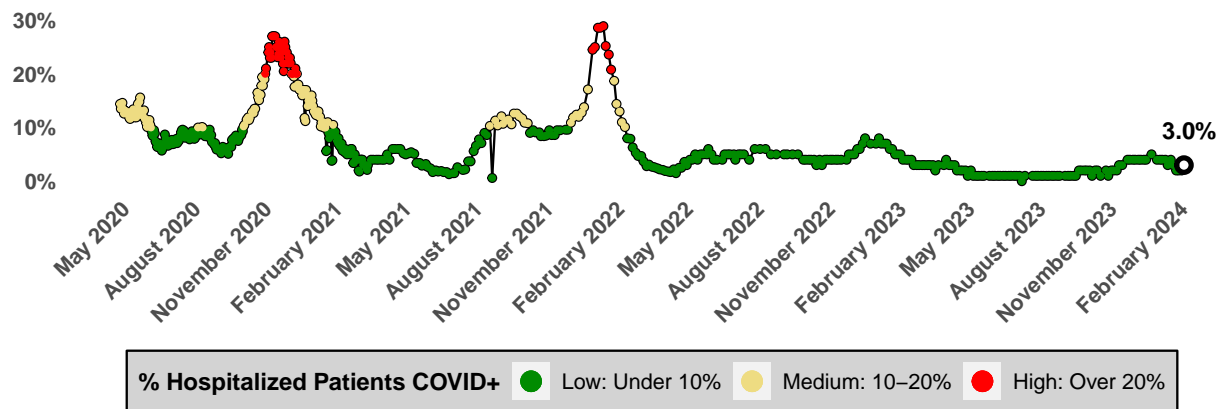
### City of Milwaukee COVID-19 Vaccination Uptake

- As of February 9, 2024, 11.1% of city residents are up-to-date with their COVID-19 vaccinations.

### COVID-19 Hospital Admission Metrics, Updated February 9, 2023

COVID-19 Hospital Admission Level - Low		
County Weekly Metrics Used to Determine the COVID-19 Hospital Admission Level	Comparison to Prior Week	
New hospital admissions of confirmed COVID-19, past week (total)	145	Up from 133
New COVID-19 admissions per 100,000 population	9.2	Up from 8.4
% Staffed inpatient beds occupied by patients with confirmed COVID-19 past week (average)	3.2	Down from 3.7%

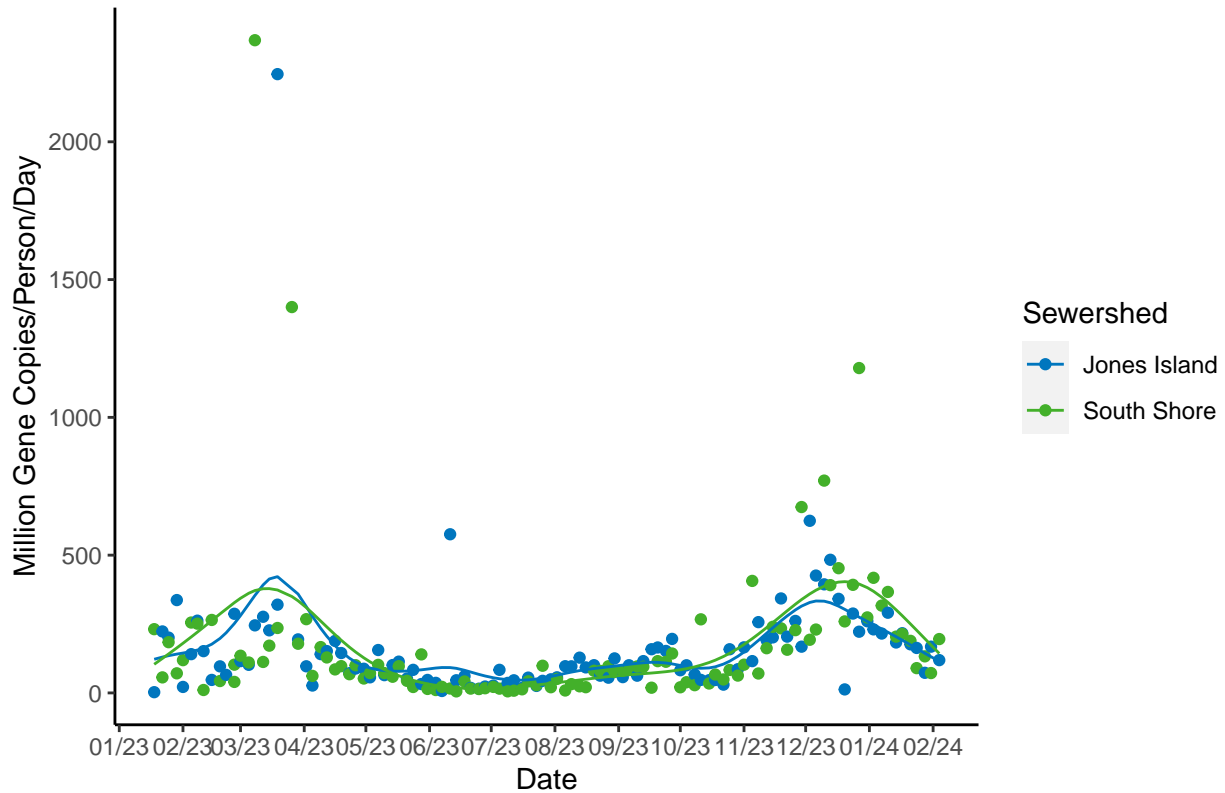
### Hospitalized Patients that are COVID-19 Positive Timeline, Milwaukee County



Data Source: HERC Region 7  
Last Update: 2024-02-08

## SARS-CoV-2 Wastewater Surveillance

### COVID-19 Trends in Milwaukee Sewersheds



**Category:** Compared to the last 6 months of data, the average of the last three most recent SARS-CoV-2 measurements are in the 40 percentile for Jones Island Sewershed and are in the 50 percentile for South Shore Sewershed. These measurements are *moderate* for Jones Island and *moderate* for South Shore.

**Trajectory:** Wastewater concentrations of SARS-CoV-2 *significantly increased* in the Jones Island or South Shore sewersheds.

Please note that at this time, the values reported here are slightly different than the values reported for Jones Island and South Shore on the DHS COVID-19 Wastewater Dashboard – this is not an error. The differences are due to the Milwaukee Health Department Lab (MHDL) using different methodologies than the lab who sends data to DHS.