

Milwaukee Respiratory Virus Surveillance Update

MMWR Week 42, Ending October 18, 2025

Contents

Respiratory Illnesses In the News	2
Overview	2
Statewide and Regional Influenza-like Illness Activity	3
Respiratory Virus Laboratory Surveillance	3
Milwaukee County Influenza Activity	4
Influenza Testing Data	5
National Influenza Activity	6
Respiratory Illness Emergency Department Visits in Milwaukee County	6
Respiratory Illness Immunization Rates of Milwaukee County Residents, 2025-2026 Season	8
COVID-19 Activity	8
Wastewater Disease Surveillance - Respiratory Illnesses	9

Respiratory Illnesses In the News

New Global Coalition Launches to Address the Hidden Threat of RSV in Adults: <https://www.biospace.com/press-releases/new-global-coalition-launches-to-address-the-hidden-threat-of-rsv-in-adults>

Overview

County

- There were 1 influenza-associated hospitalizations reported in Milwaukee County during the week ending on October 18, 2025. From September 28, 2025 through October 18, 2025, there have been 4 reported influenza-associated hospitalizations in Milwaukee County (2 City of Milwaukee residents).

State

- Statewide respiratory illness levels are low. Influenza and RSV activity levels are minimal based on emergency department, laboratory testing, and wastewater data.
- COVID-19 activity is low and decreasing in emergency department data, laboratory testing and wastewater data.
- Rhinovirus/enterovirus activity levels are elevated; parainfluenza virus activity is increasing.

National

Disclaimer: National influenza data is currently unavailable for this reporting period. Updates will be provided as soon as the data becomes available. Any current national data is through MMWR Week 38, 2025.

- Seasonal influenza continues to decline. This week 1 jurisdiction experienced moderate influenza activity and 1 jurisdictions experienced high or very high activity.
- 0 influenza-associated pediatric deaths occurred during this week.
- Influenza A(H1N1)pdm09, A(H3N2), and B were the predominant viruses this week.

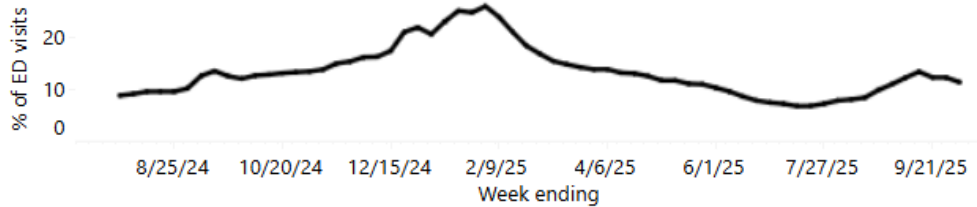
CDC Pediatric Data (Since Week 40)

2024-25 To Date: Total Deaths	2023-24 To Date: Total Deaths	Pediatric Deaths This Week	Notes on Deaths
261	210	0	One influenza-associated pediatric death that occurred during Week 50 (the week ending December 14, 2024) of the 2024-2025 season was reported to CDC during Week 38. A total of 281 influenza-associated pediatric deaths occurring during the 2024-2025 season have been reported to CDC. This is the highest number of pediatric deaths reported in any non-pandemic influenza season since the condition became reportable in 2004. Among children who were eligible for influenza vaccination and with known vaccine status, 89% of reported pediatric deaths this season (compared to 82% during the 2023-2024 season) have occurred in children who were not fully vaccinated against influenza.

Statewide and Regional Influenza-like Illness Activity

Influenza-like illness levels were low statewide and minimal in the southeastern region of the state.

Overall respiratory illness trends over time

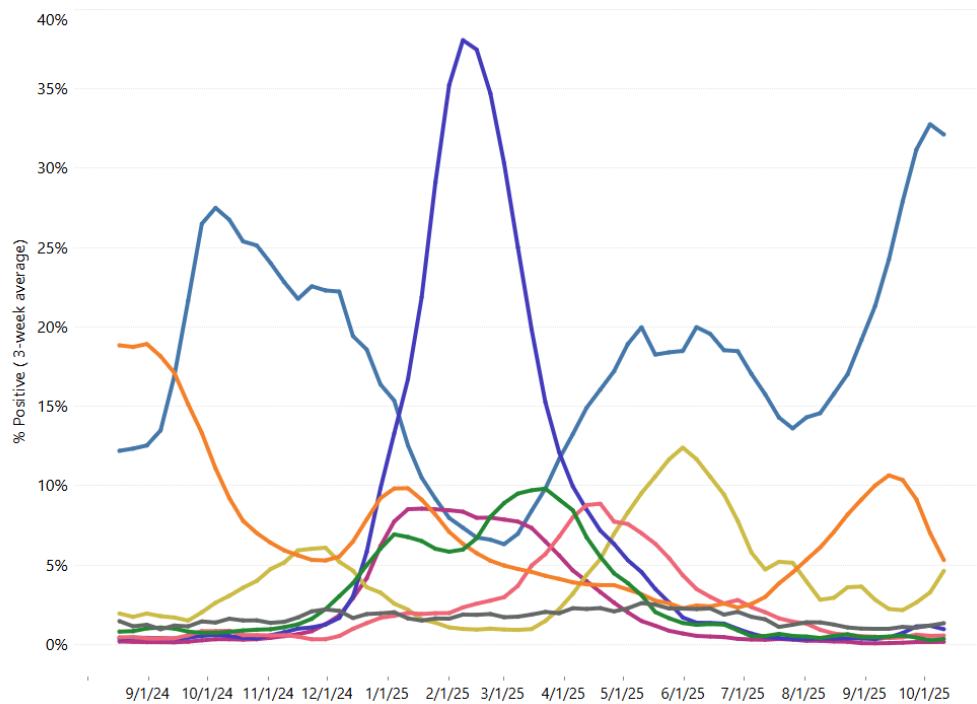


Southeastern Region Influenza-Like Illness Activity

Wisconsin Department of Health Services Respiratory Virus Surveillance, October 18, 2025

Respiratory Virus Laboratory Surveillance

3-week **average percent (%)** of reported test results **positive** for selected viruses by week. Data are interactive. **Hover over lines** to see more information and use options featured below.



RSV = respiratory syncytial virus, hMPV = human metapneumovirus

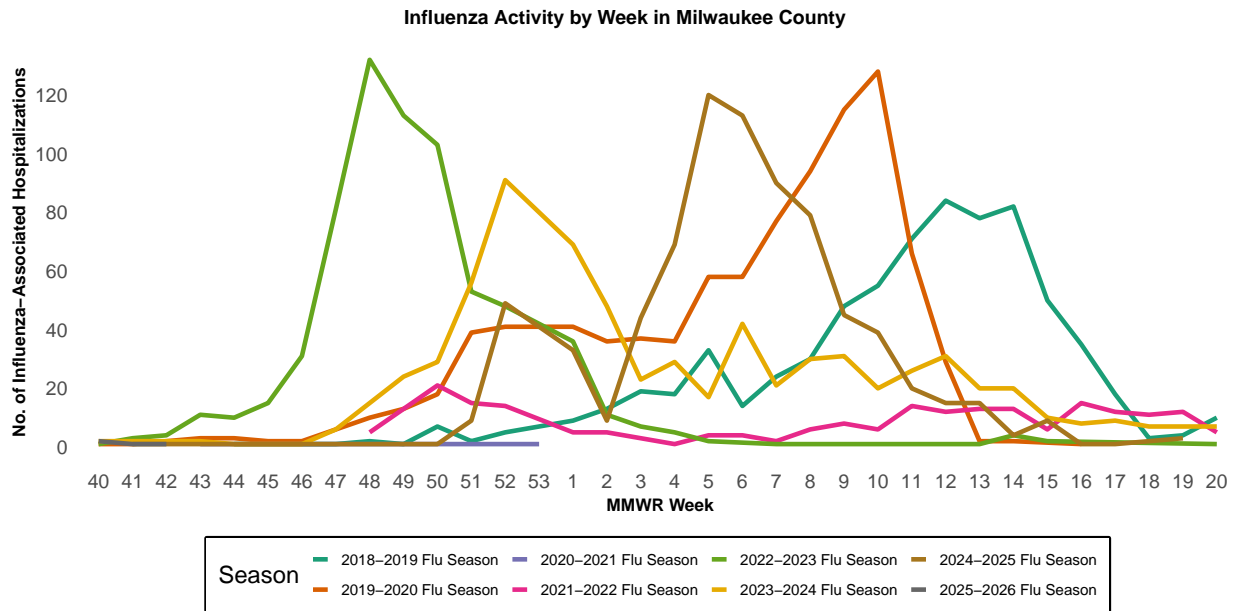
- Adenovirus
- Coronavirus (seasonal)
- COVID-19
- HMPV
- Influenza
- Parainfluenza virus
- Rhinovirus/ Enterovirus
- RSV

Wisconsin Department of Health Services Respiratory Laboratory Testing Data, October 18, 2025

Milwaukee County Influenza Activity

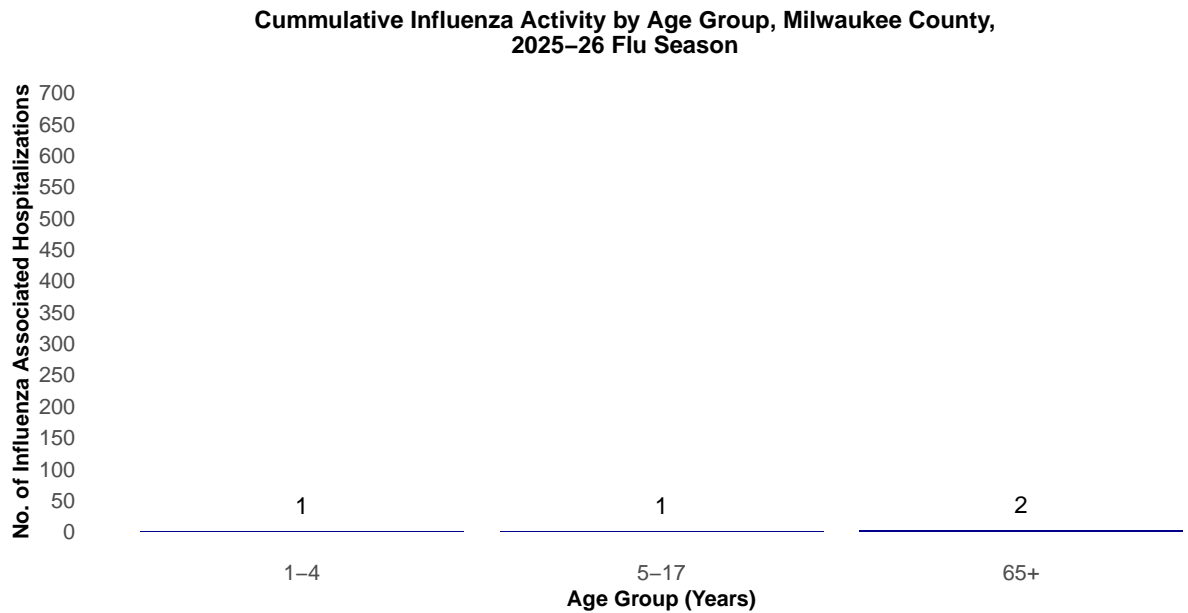
From September 28, 2025 through October 18, 2025 there have been 4 reported influenza-associated hospitalizations in Milwaukee County.

Milwaukee County Influenza-Associated Hospitalizations



*Flu activity was unusually low in the 2020-2021 flu season, despite high levels of testing. COVID-19 mitigation measures such as wearing face masks, social distancing, staying home, and school closures, in addition to flu vaccination, likely contributed to the low flu activity during this season.

Milwaukee County Influenza-Associated Hospitalizations by Age Group MMWR Week 40, 2024 through Week 42, 2024



Influenza Testing Data

Public Health Laboratory Influenza Testing Data To-Date (Since Week 40)

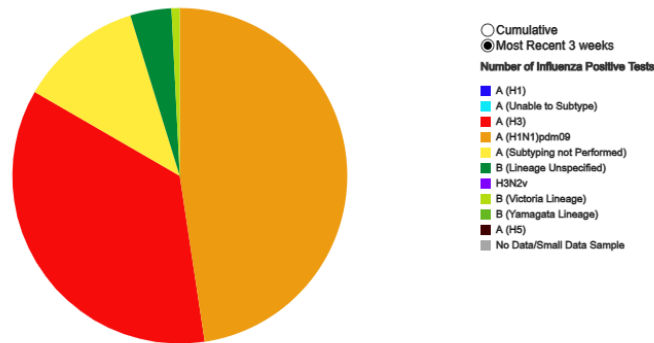
CDC Laboratory Testing predominant subtype is A. The predominant influenza A subtype is (H1N1)pdm09 and the predominant influenza B subtype is Victoria.

Lab	Number Tested to date	Number Positive to date	Most Recent Week Percent Positive
CDC	4,136,992	490,224	160/45,194 (0.4%)
WSLH	-	-	46/6,571 (0.7%)
MHDL	NA	NA	2/9 (22.2%)

National Influenza Testing Data, CDC FluView



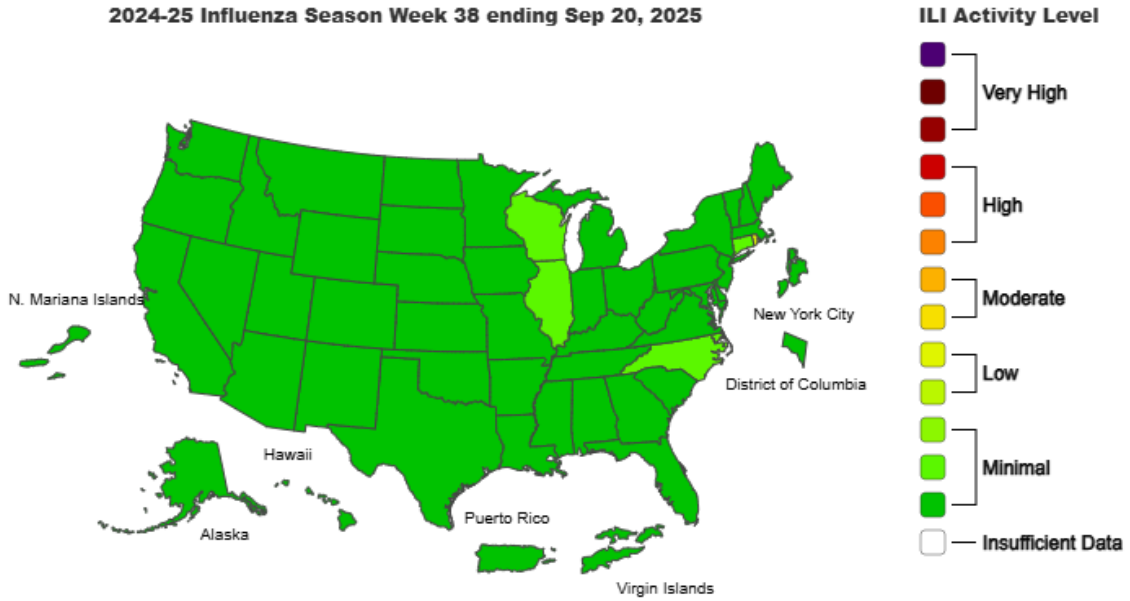
Influenza Positive Tests Reported to CDC by Public Health Laboratories, National Summary, 2024-25 Season, week ending Sep 20, 2025
Reported by: U.S. Influenza/NREVSS Collaborating Laboratories and ILINet



<http://gis.cdc.gov/grasp/fluview/fluportaldashboard.html> accessed

National Influenza Activity

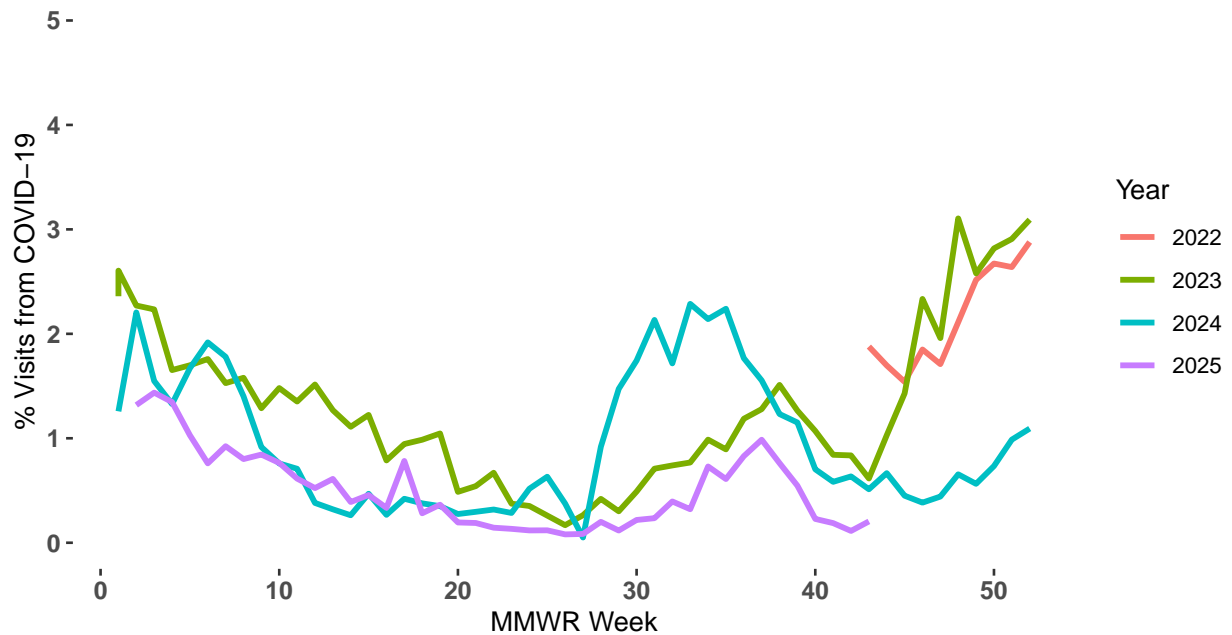
Outpatient Respiratory Illness Activity Map, CDC FluView



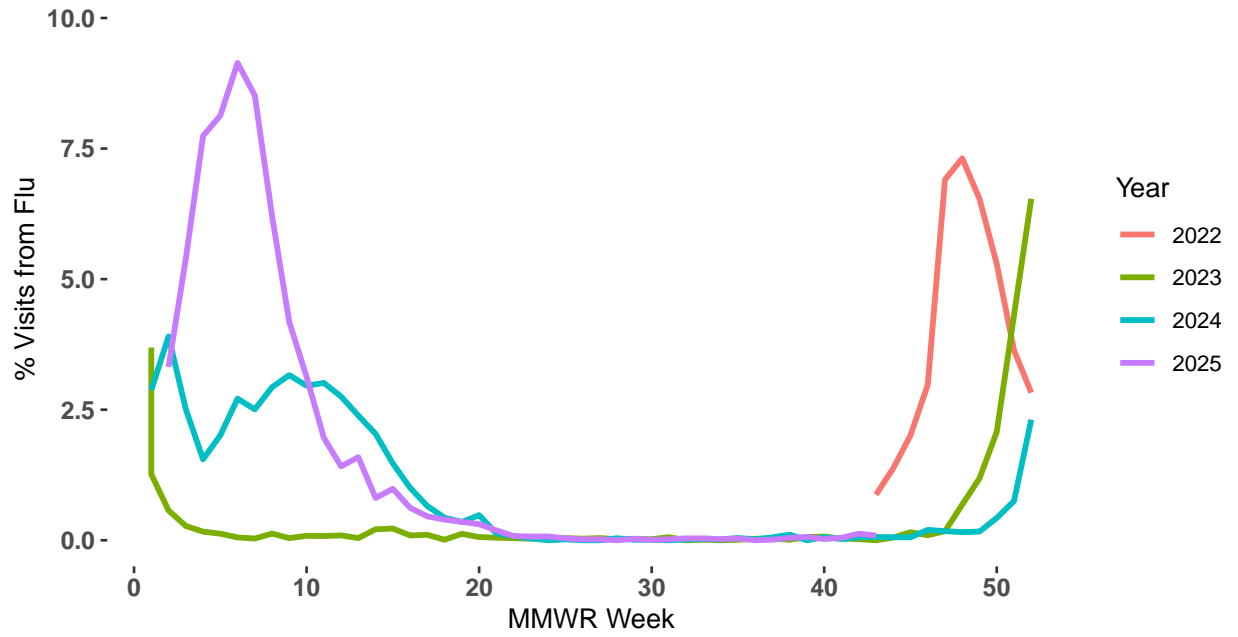
<https://www.cdc.gov/flu/weekly/index.htm#MS2> accessed

Respiratory Illness Emergency Department Visits in Milwaukee County

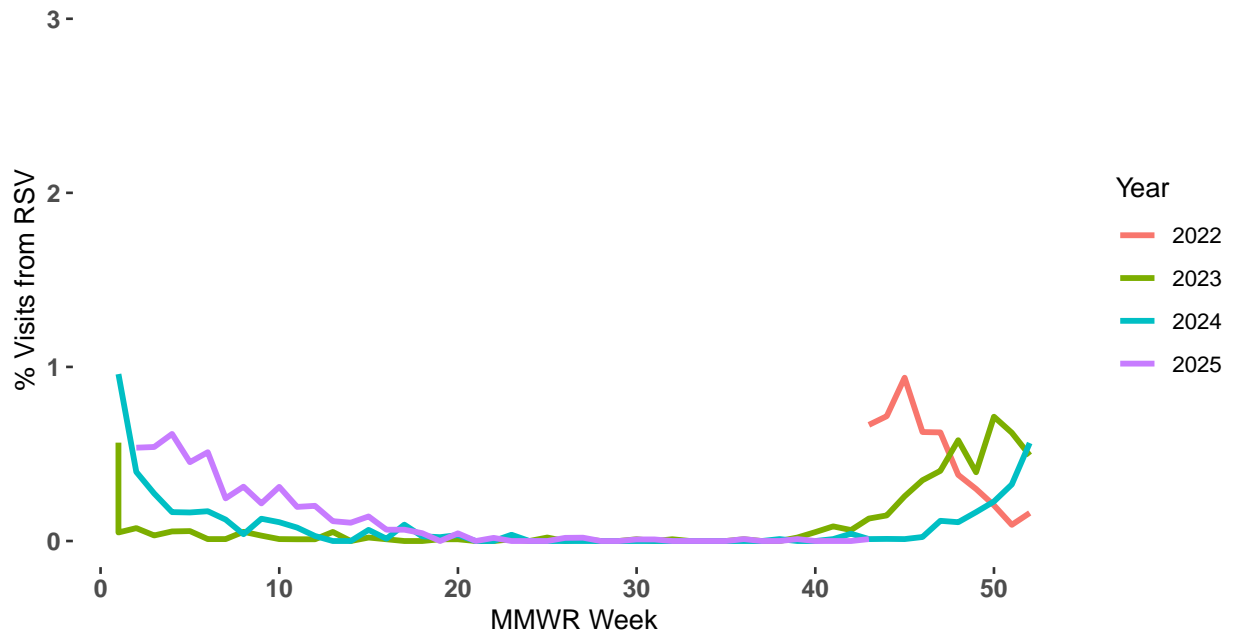
Emergency Room Visits Due to COVID-19



Emergency Room Visits Due to Flu



Emergency Room Visits Due to RSV



Respiratory Illness Immunization Rates of Milwaukee County Residents, 2025-2026 Season

The Wisconsin Department of Health Services (DHS) Immunization Program has dashboards for statewide and county specific immunization rates for influenza vaccinations, COVID-19 vaccinations, and both infant and adult RSV vaccinations. Each immunization dashboard contains demographic data for people receiving vaccines.

To access these dashboards:

- COVID-19: <https://www.dhs.wisconsin.gov/immunization/covid-19-vaccine-data.htm>
- Influenza: <https://www.dhs.wisconsin.gov/immunization/influenza.htm>
- RSV: <https://www.dhs.wisconsin.gov/immunization/rsv-vaccine-data.htm>

COVID-19 and RSV dashboards are updated weekly year-round and the influenza dashboard is updated weekly during the flu season.

Influenza Vaccine Composition 2025-2026 Influenza Season

All standard-dose flu shots will be a trivalent formulation. The trivalent vaccines for use in the 2025-2026 influenza season contain the following:

Egg-based vaccines

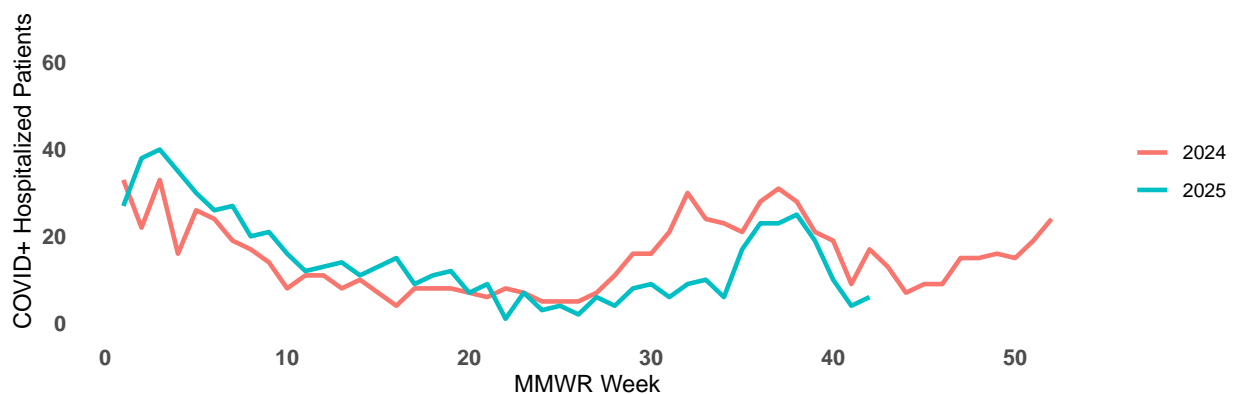
- an A/Victoria/4897/2022 (H1N1)pdm09-like virus;
- an A/Croatia/10136RV/2023 (H3N2)-like virus; and
- a B/Austria/1359417/2021 (B/Victoria lineage)-like virus

Cell- or recombinant-based vaccines

- an A/Wisconsin/67/2022 (H1N1)pdm09-like virus;
- an A/District of Columbia/27/2023 (H3N2)-like virus; and
- a B/Austria/1359417/2021 (B/Victoria lineage)-like virus

COVID-19 Activity

Hospitalized Patients that are COVID-19 Positive Timeline, Milwaukee County

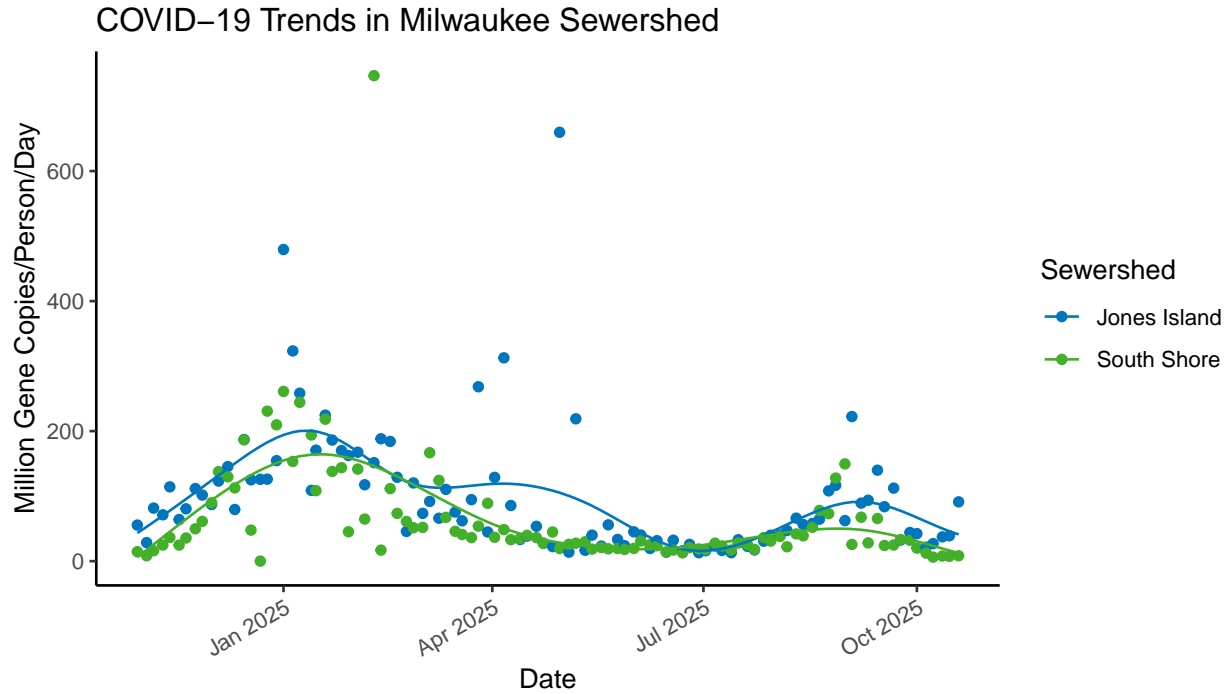


Data Source: WEDSS
Last Update: 2025-10-16

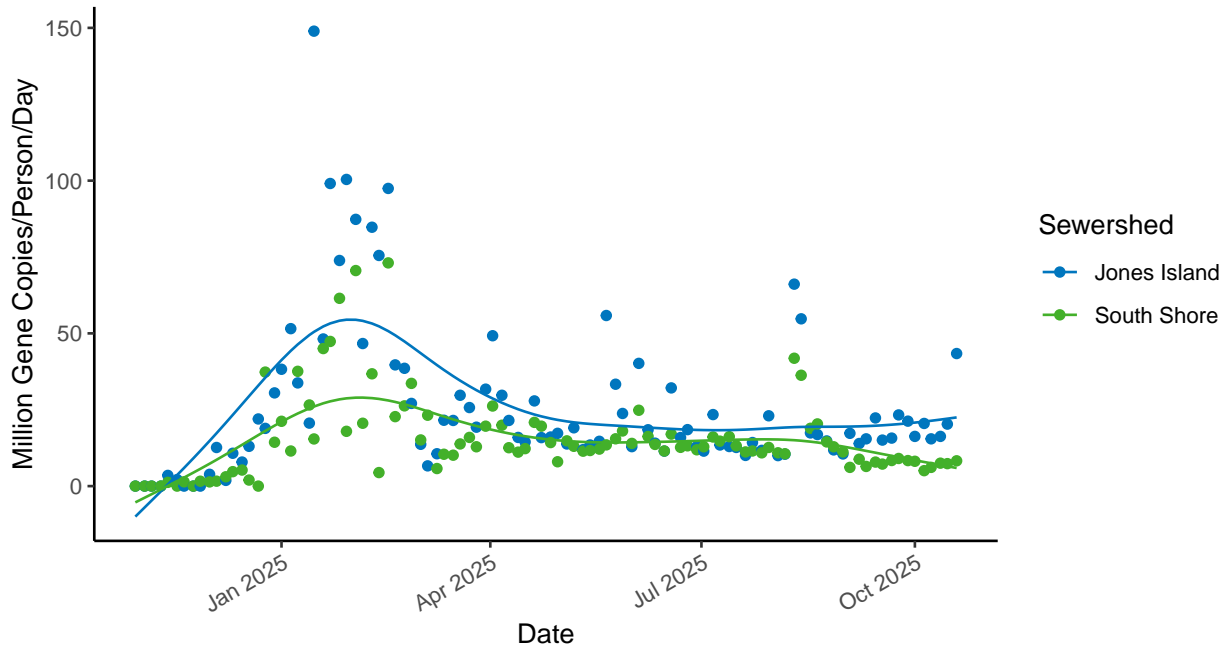
Wastewater Disease Surveillance - Respiratory Illnesses

Wastewater disease surveillance is a powerful tool that detects illness before people start to show symptoms. MHD Laboratory does routine disease surveillance from wastewater samples at Milwaukee Metropolitan Sewerage Districts collection points, Jones Island and South Shore. Samples are taken twice weekly at each site. Wastewater disease surveillance can detect a wide variety of illnesses. At MHD, we test for COVID-19, influenza A, influenza B, and RSV respiratory pathogens.

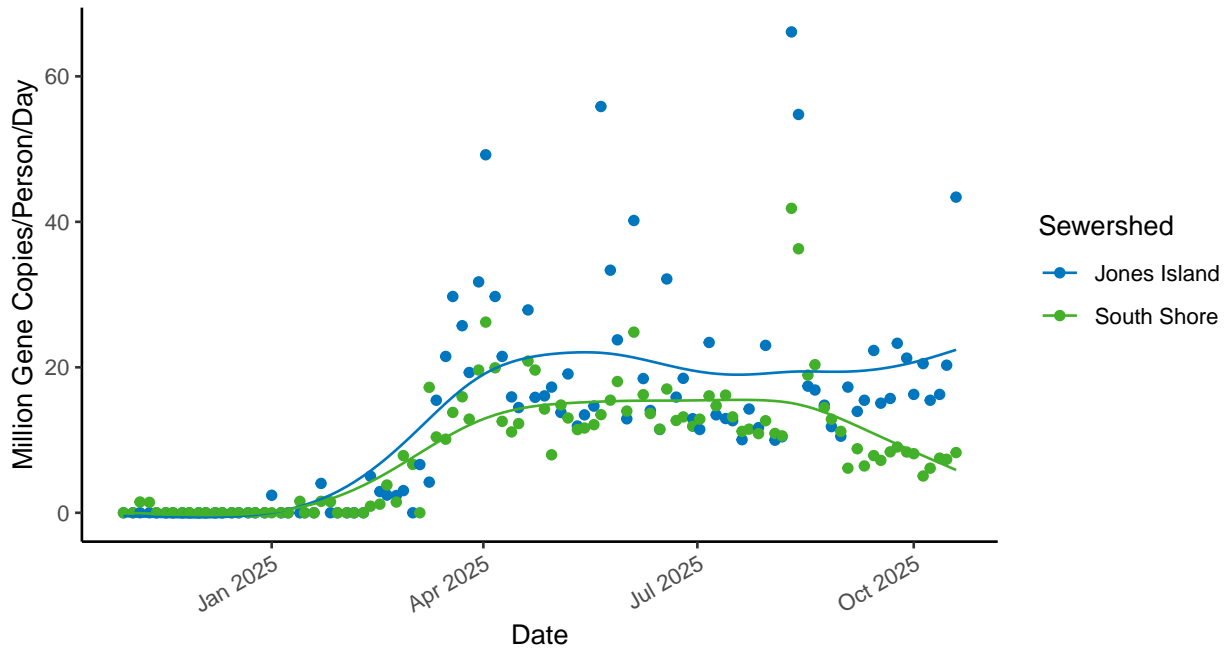
When interpreting wastewater surveillance data, the trend is the most important indicator of disease level in the population. Each of the plots below include a spline that represents the trend of illnesses.

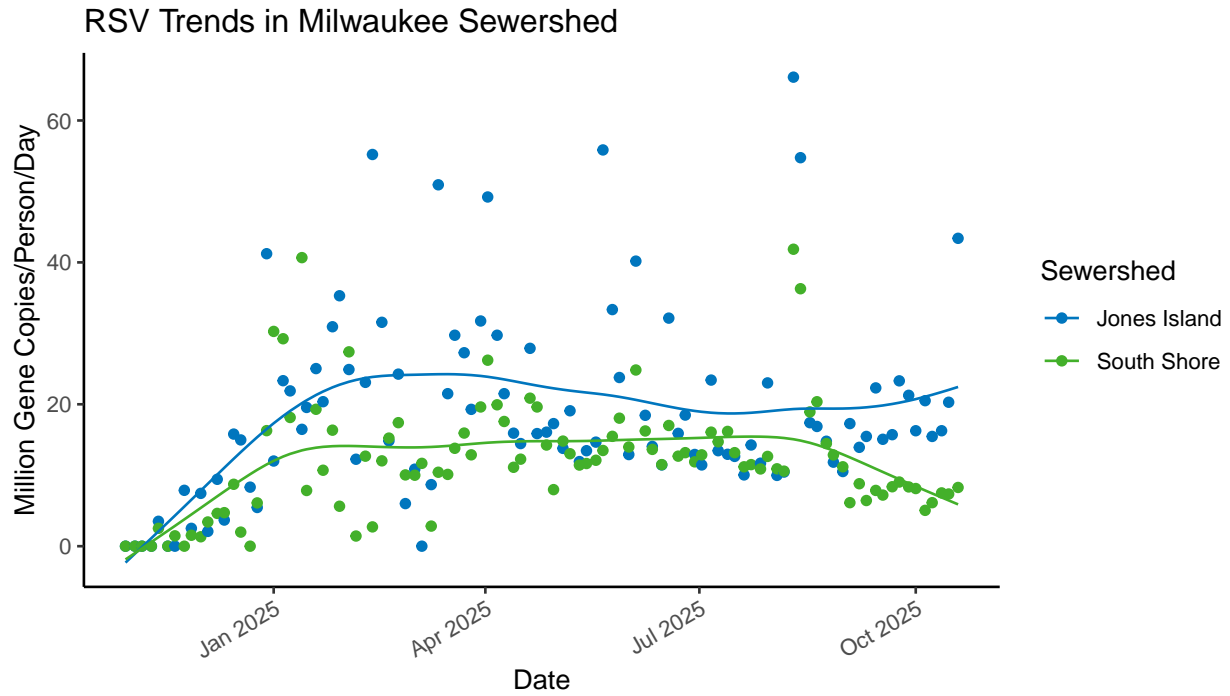


Flu A Trends in Milwaukee Sewershed



Flu B Trends in Milwaukee Sewershed





To see more interactive wastewater surveillance data, visit the MHD respiratory illness dashboard at <https://milwaukee.gov/wastewater>.

Have feedback on the Milwaukee Respiratory Illness Report? Send an email with the subject line “User Feedback” to SURVNET@milwaukee.gov.