

Milwaukee Respiratory Virus Surveillance Update

MMWR Week 35, Ending August 31, 2024

Contents

Overview	2
Statewide and Regional Influenza Activity	3
Respiratory Virus Laboratory Surveillance	3
Milwaukee County Influenza Activity	4
Influenza Testing Data	5
National Influenza Activity	5
Global Influenza Activity	7
Influenza Vaccination Uptake by City of Milwaukee Residents, 2023-2024 Season	8
Respiratory Illness Emergency Department Visits in Milwaukee County	9
COVID-19 Activity	10
SARS-CoV-2 Wastewater Surveillance	11

Overview

County

- There were 1 influenza-associated hospitalizations reported in Milwaukee County during the week ending on August 31, 2024. From October 1, 2023 through August 31, 2024, there have been 696 reported influenza-associated hospitalizations in Milwaukee County (532 City of Milwaukee residents).

State

- Emergency department (ED), laboratory testing, hospitalization, and wastewater data all show that COVID-19 activity is elevated.
- ED visit data show that COVID-19 activity is increasing most among children under 5 years and people 65 years and older.
- Influenza and RSV continued to circulate at low levels in Wisconsin.

National

- Seasonal influenza activity remains low nationally.
- 2 influenza-associated pediatric deaths occurred during this week.
- Influenza A (H1N1)pdm09 and A(H3N2) were co-circulating this week.

Influenza Vaccine Composition 2022-2023 Influenza Season All standard-dose flu shots will be quadrivalent (no trivalent standard-dose flu shots will be available this season). The quadrivalent vaccines for use in the 2023-2024 influenza season contain the following:

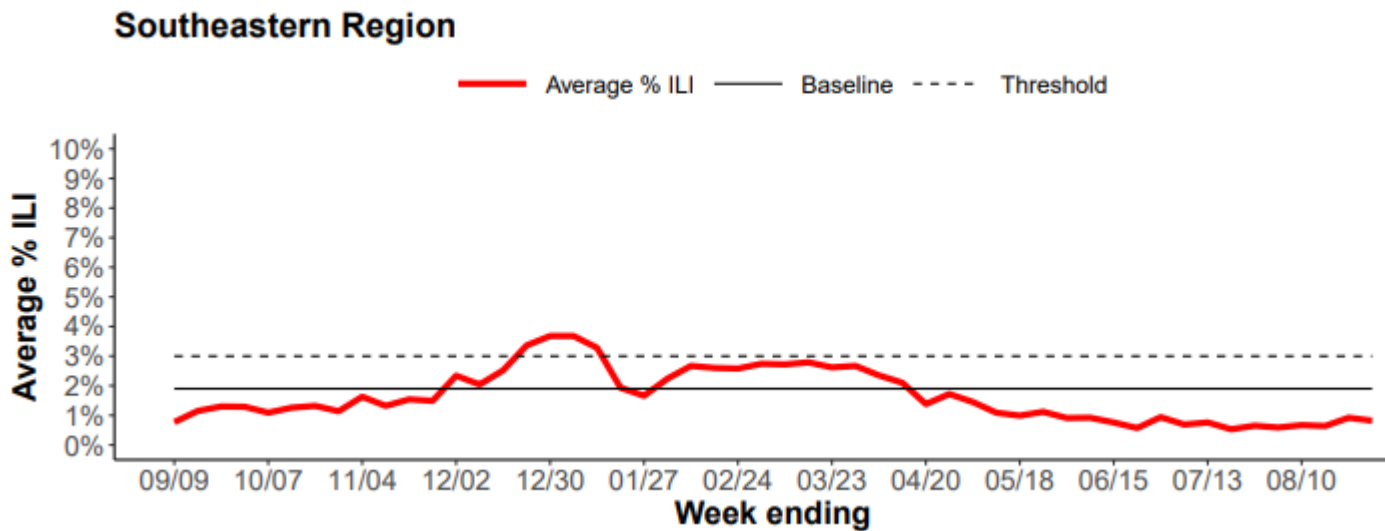
- an A/Victoria/4897/2022 (H1N1)pdm09-like virus;
- an A/Darwin/9/2021 (H3N2)-like virus;
- a B/Austria/1359417/2021 (B/Victoria lineage)-like virus; and
- a B/Phuket/3073/2013 (B/Yamagata lineage)-like virus

CDC Pediatric Data (Since Week 40)

2023-24 To Date: Total Deaths	2022-23 To Date: Total Deaths	Pediatric Deaths This Week	Notes on Deaths
197	186	2	Two influenza-associated pediatric death occurring during the 2023-2024 season was reported to CDC during Week 35. One death was associated with an influenza A(H1N1) virus and occurred during Week 7 (the week ending February 17, 2024).The other death was associated with an influenza B virus with no lineage determined and occurred during Week 11 (the week ending March 16, 2024).

Statewide and Regional Influenza Activity

Influenza-like illness levels were below baseline statewide and below baseline in the southeastern region of the state.

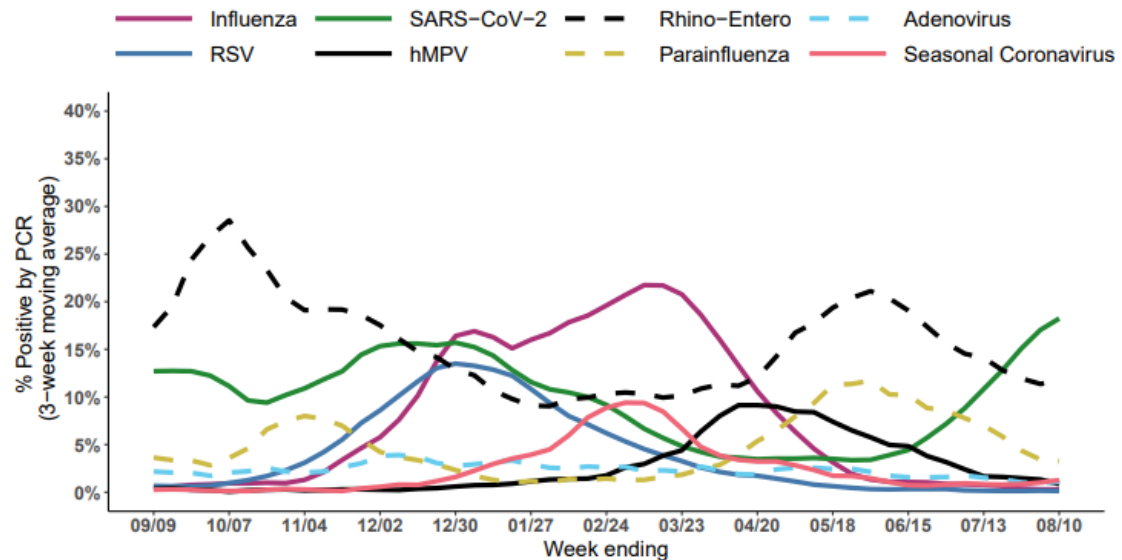


Wisconsin Department of Health Services Respiratory Virus Surveillance Report, August 31, 2024

Respiratory Virus Laboratory Surveillance

Wisconsin Laboratory Surveillance for Respiratory Viruses

Percent positivity of respiratory viruses tested by PCR, NREVSS

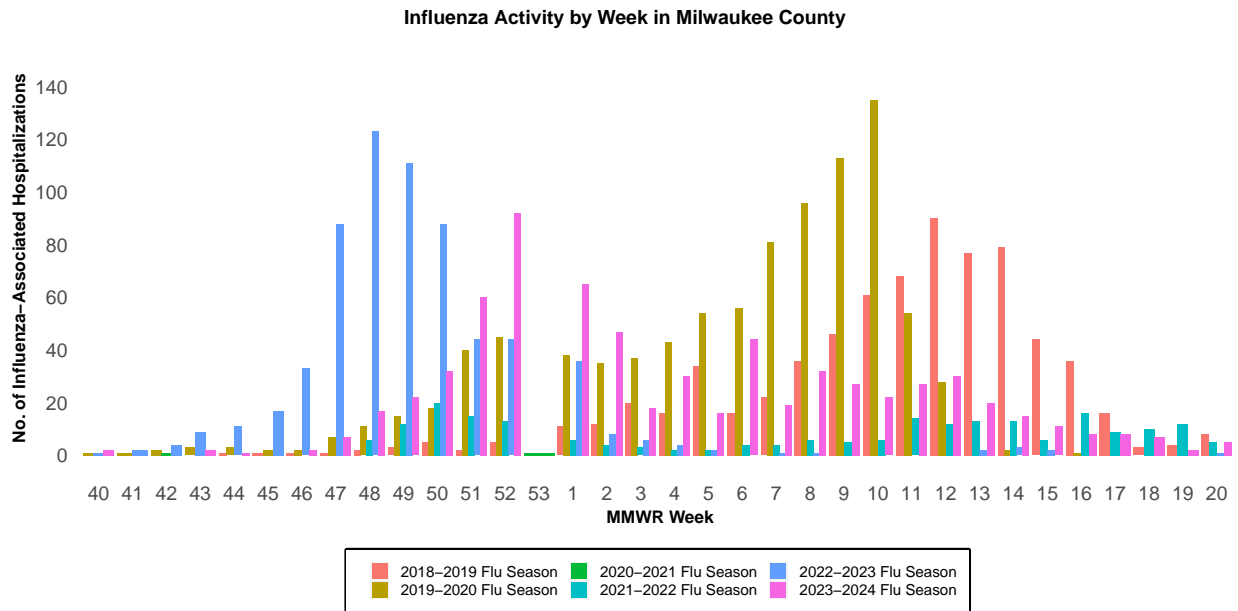


Wisconsin Department of Health Services Respiratory Virus Surveillance Report, August 31, 2024

Milwaukee County Influenza Activity

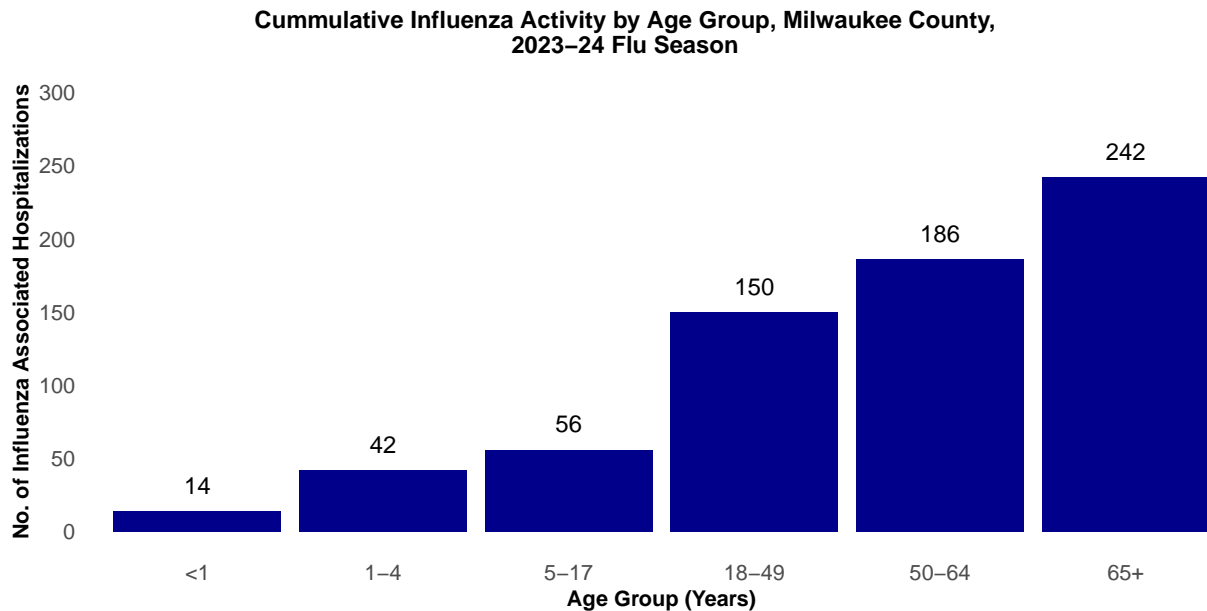
From October 1, 2023 through August 31, 2024 there have been 696 reported influenza-associated hospitalizations in Milwaukee County.

Milwaukee County Influenza-Associated Hospitalizations



*Flu activity was unusually low in the 2020-2021 flu season, despite high levels of testing. COVID-19 mitigation measures such as wearing face masks, social distancing, staying home, and school closures, in addition to flu vaccination, likely contributed to the low flu activity during this season.

Milwaukee County Influenza-Associated Hospitalizations by Age Group MMWR Week 40, 2023 through Week 35, 2023



Influenza Testing Data

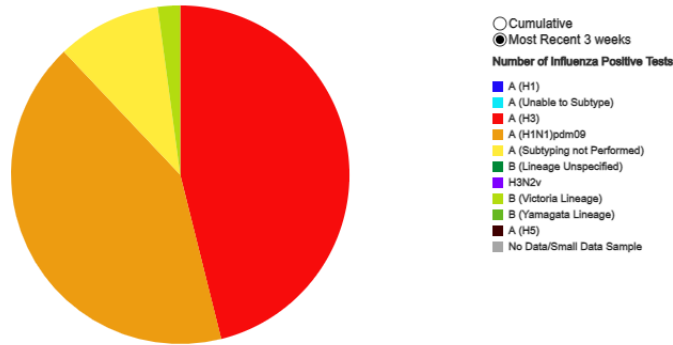
Public Health Laboratory Influenza Testing Data To-Date (Since Week 40)

Lab	Number Tested to date	Number Positive to date	Most Recent Week Percent Positive	Predominant A Subtype and Strain	Predominant B Strain	Predominant Type (A or B)
CDC	3,910,204	351,460	168/38,295 (0.4%)	H3N2	Victoria	A
WSLH	-	-	20/5,826 (0.3%)	Unknown	Unknown	A
MHDL	7	0	0/1 (0%)	Unknown	Unknown	Unknown

National Influenza Testing Data, CDC FluView



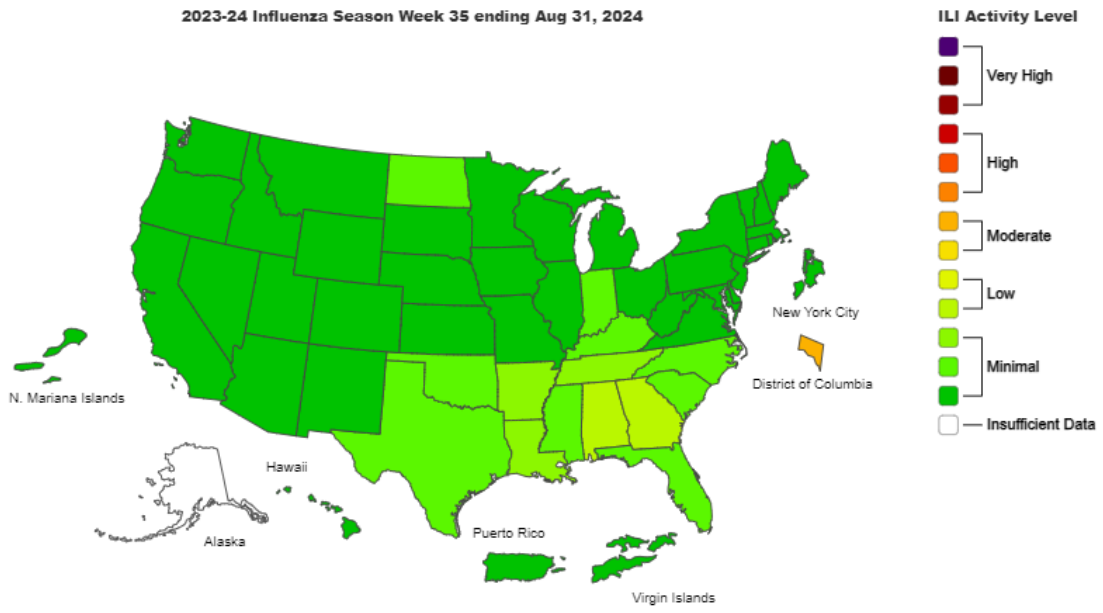
Influenza Positive Tests Reported to CDC by Public Health Laboratories, National Summary, 2023-24 Season, week ending Aug 31, 2024
 Reported by: U.S. WHO/NREVSS Collaborating Laboratories and ILINet



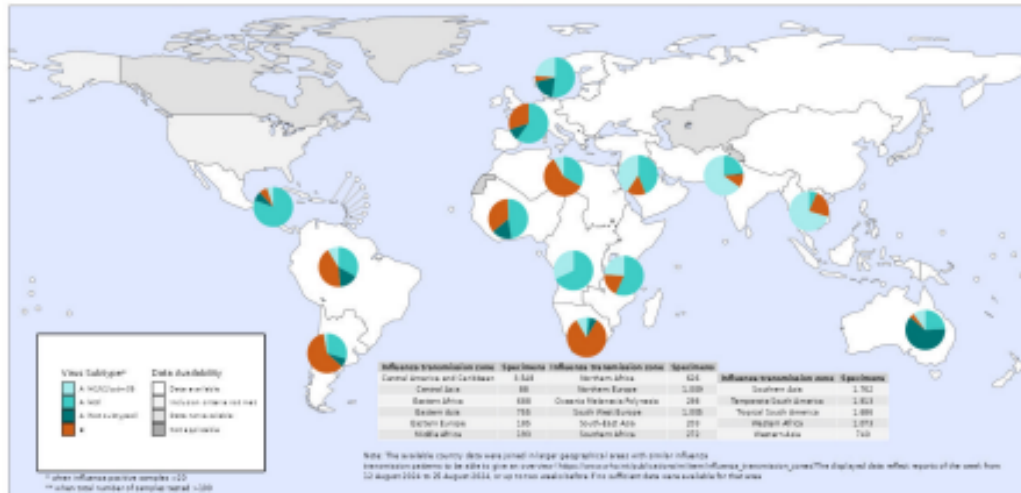
National Influenza Activity

Outpatient Respiratory Illness Activity Map, CDC FluView

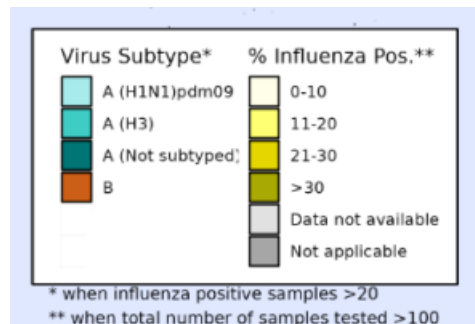
2023-24 Influenza Season Week 35 ending Aug 31, 2024



Global Influenza Activity



Sentinel specimens testing positive for influenza, by virus type and subtype

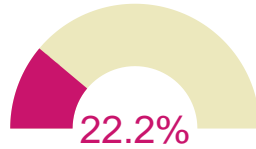


- In the Northern hemisphere, influenza activity in temperate countries remained at interepidemic levels. Activity was elevated in countries in Western Africa (due to A(H3N2) and B viruses), Middle Africa (due to A(H3N2) viruses), Southern Asia (due to A(H1N1)pdm09 viruses), and South East Asia (due to A(H1N1)pdm09 viruses). Activity continued to increase in some countries in Middle Africa and Southern Asia.
- In the Southern hemisphere, influenza activity remained elevated in countries in South America (due to influenza A(H3N2) and B viruses), Eastern Africa (due to A(H3N2) viruses), Southern Africa (due to B viruses), and Oceania (due to A(H3N2) viruses). Activity increased in some areas of Tropical South America and Eastern Africa, but declined or was similar in most other countries.

Influenza Vaccination Uptake by City of Milwaukee Residents, 2023-2024 Season

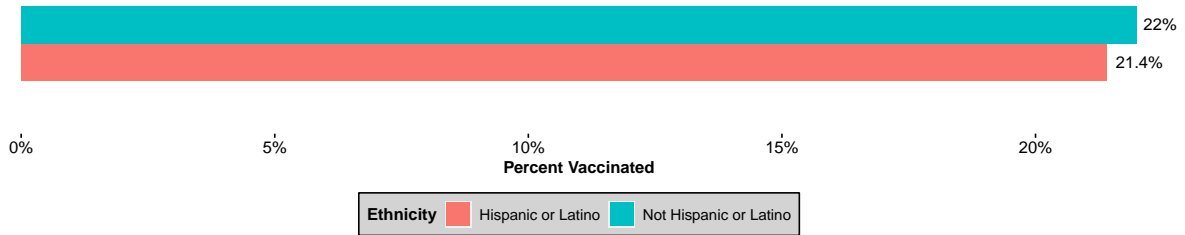
Overview

- City of Milwaukee residents who have received at least one dose of flu vaccinations as of August 31, 2024:

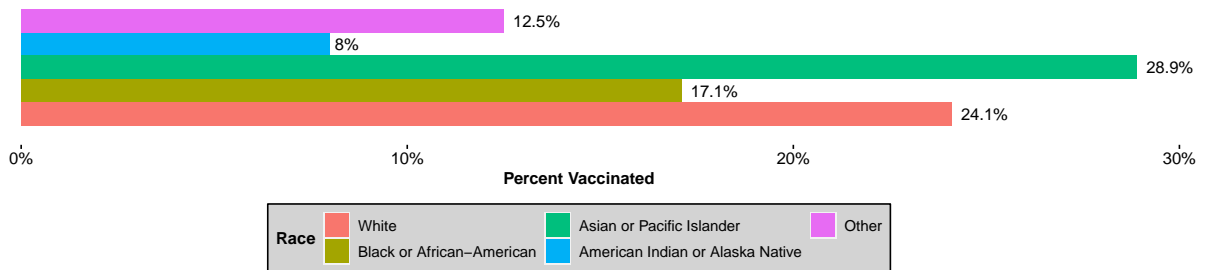


Influenza Vaccination Coverage for 2023-2024 Season by Demographics

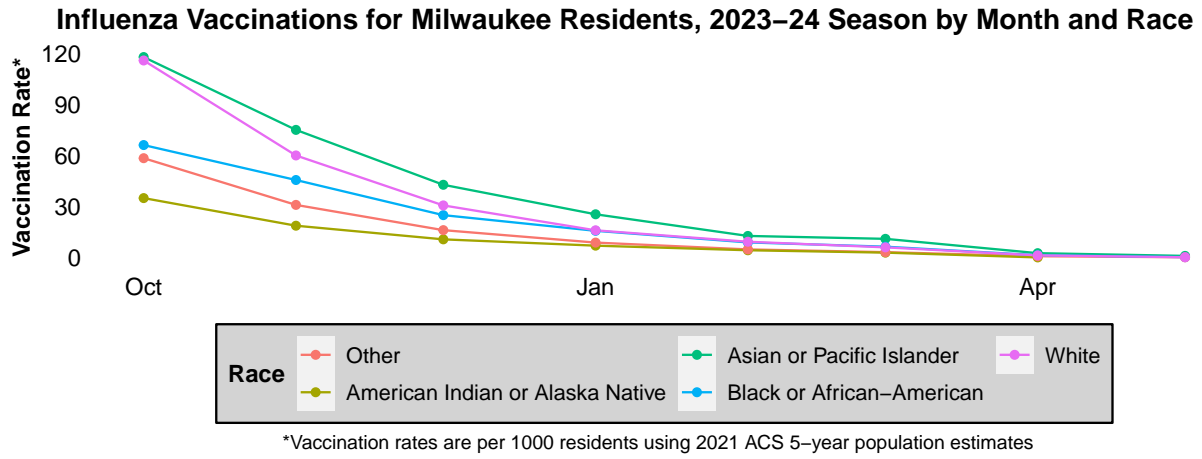
Influenza Vaccinations by Ethnicity



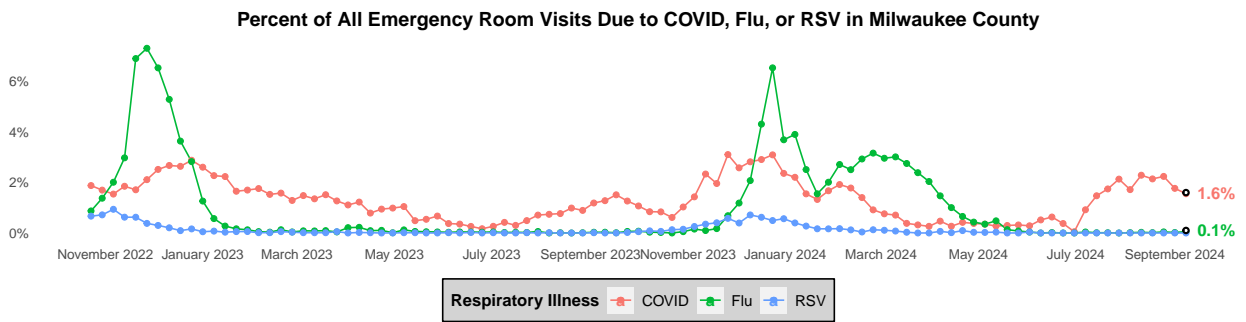
Influenza Vaccinations by Race



Vaccination Uptake Timelines



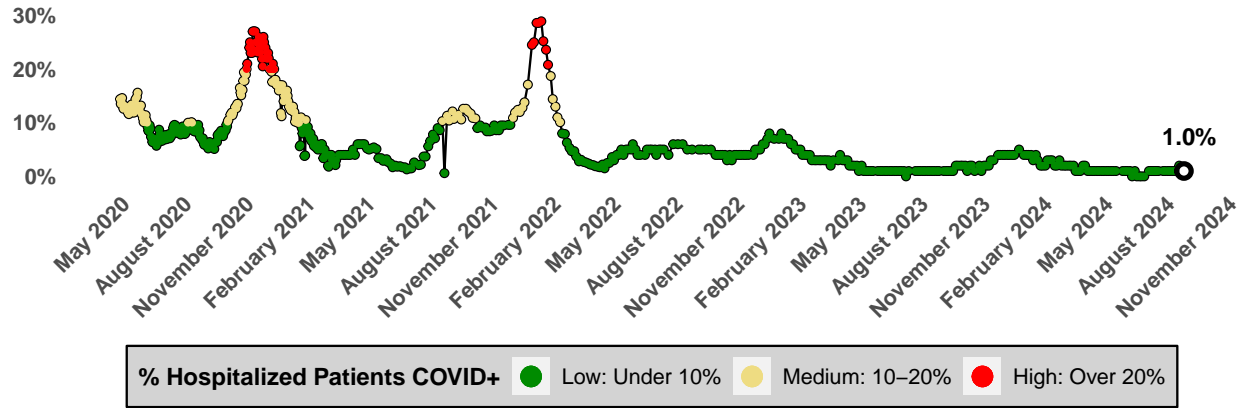
Respiratory Illness Emergency Department Visits in Milwaukee County



COVID-19 Activity

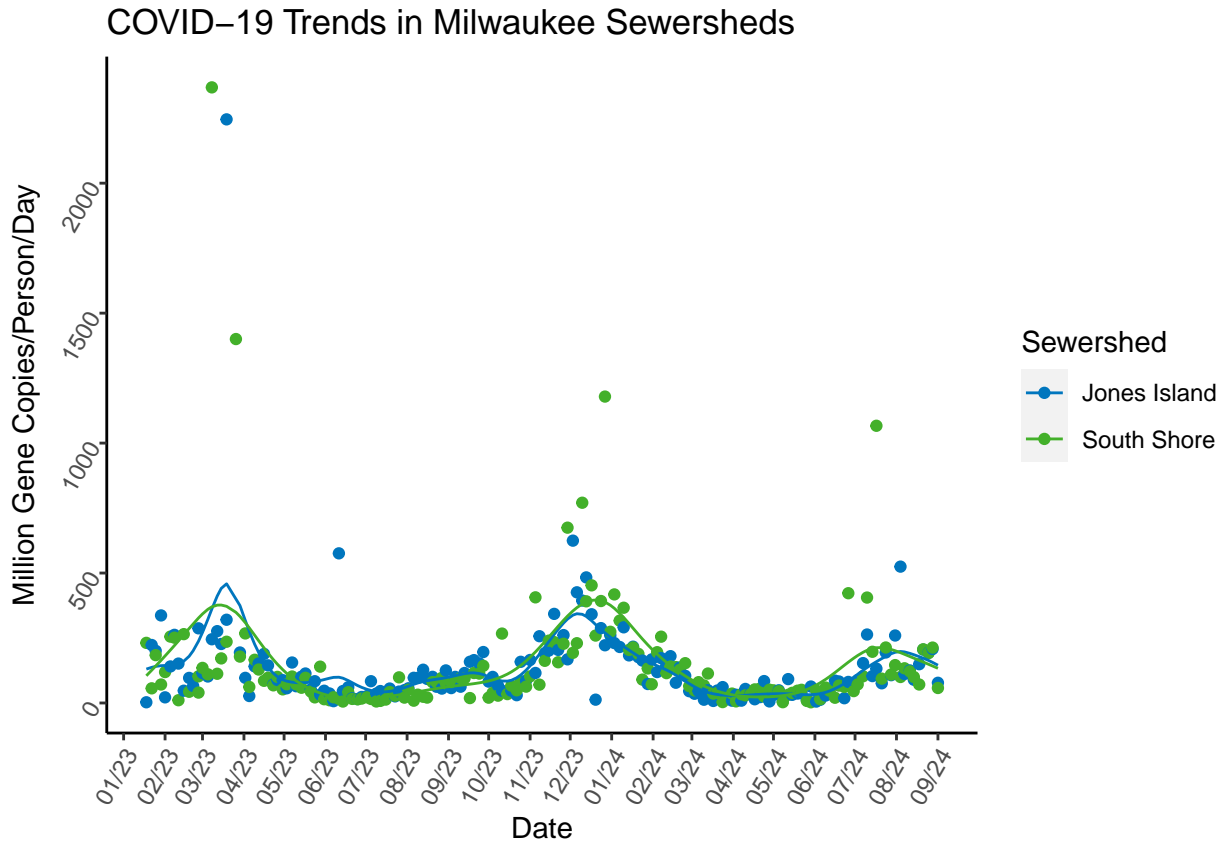
COVID-19 Hospital Admission Metrics, Updated

Hospitalized Patients that are COVID-19 Positive Timeline, Milwaukee County



Data Source: HERC Region 7
Last Update: 2024-08-29

SARS-CoV-2 Wastewater Surveillance



Category: Compared to the last 6 months of data, the average of the last three most recent SARS-CoV-2 measurements are in the 86 percentile for Jones Island Sewershed and are in the 84 percentile for South Shore Sewershed. These measurements are *high* for Jones Island and *high* for South Shore.

Trajectory: Wastewater concentrations of SARS-CoV-2 *significantly increased* in the Jones Island or South Shore sewersheds.