

Milwaukee Respiratory Virus Surveillance Update

MMWR Week 33, Ending August 16, 2025

Contents

Overview	2
Respiratory Virus Laboratory Testing Data	2
Respiratory Illness Emergency Department Visits in Milwaukee County	3
COVID-19 Activity	4
Wastewater Disease Surveillance - Respiratory Illnesses	5
Respiratory Illness Immunization Rates of Milwaukee County Resident	7

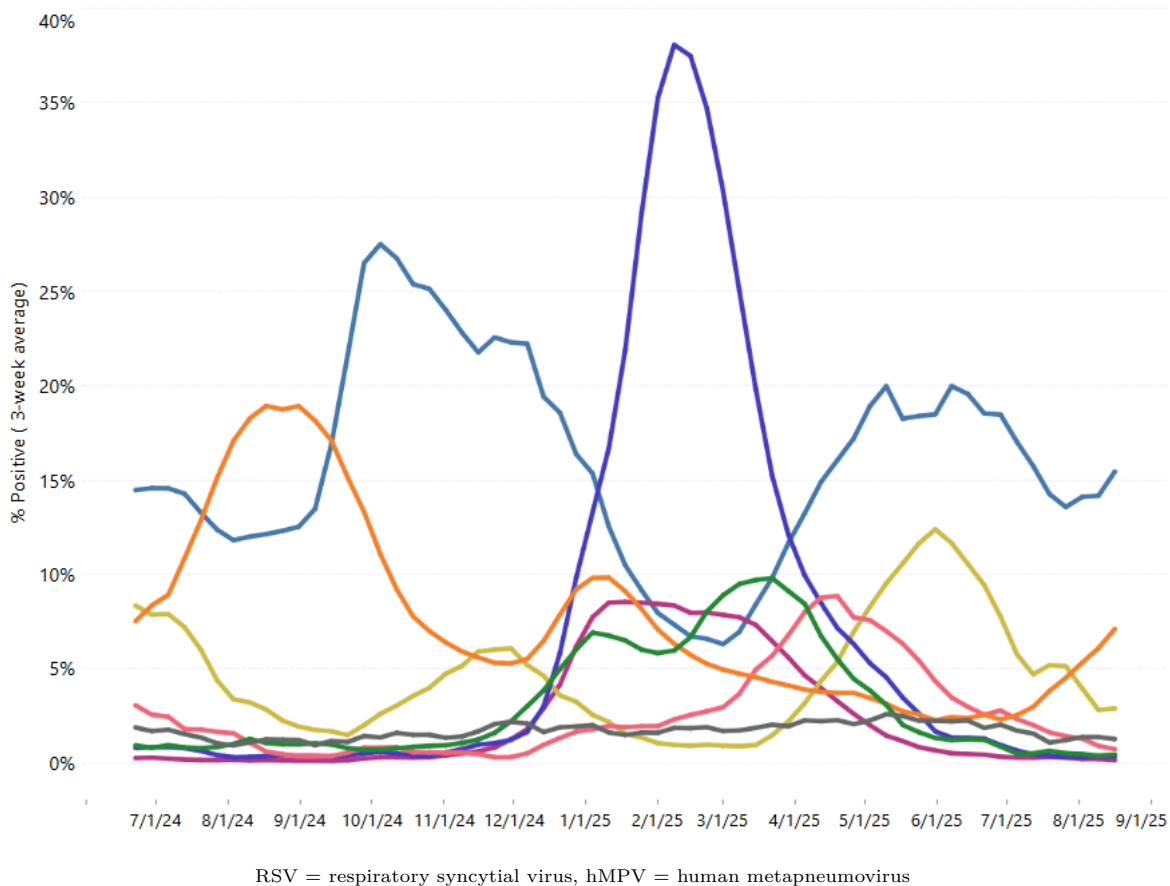
Overview

State

- Statewide respiratory illness levels are minimal.
- COVID-19 activity is increasing in our laboratory data. Activity remains minimal in our emergency department data and low in our wastewater data, but has increased over the past month. Influenza and RSV activity levels are minimal based on emergency department, laboratory testing, and wastewater data.
- Rhinovirus/enterovirus activity levels remain elevated.

Respiratory Virus Laboratory Testing Data

3-week **average percent (%)** of reported test results **positive** for selected viruses by week.
*Data are interactive. **Hover over lines** to see more information and use options featured below.*

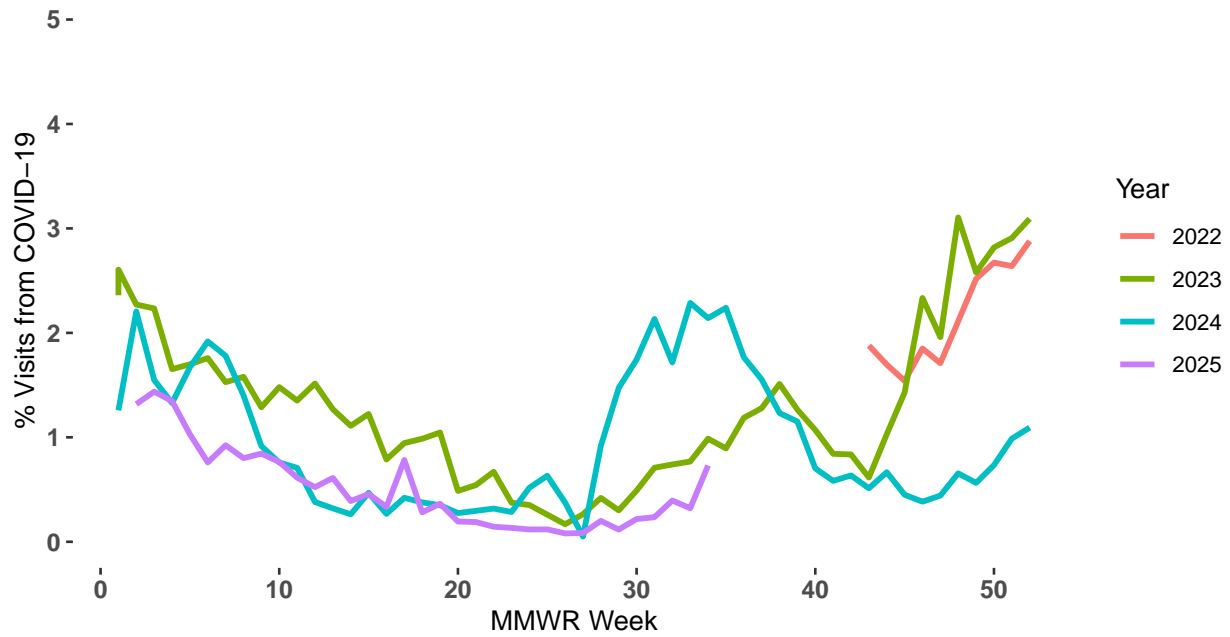


■ Adenovirus	■ Coronavirus (seasonal)	■ COVID-19	■ HMPV
■ Influenza	■ Parainfluenza virus	■ Rhinovirus/ Enterovirus	■ RSV

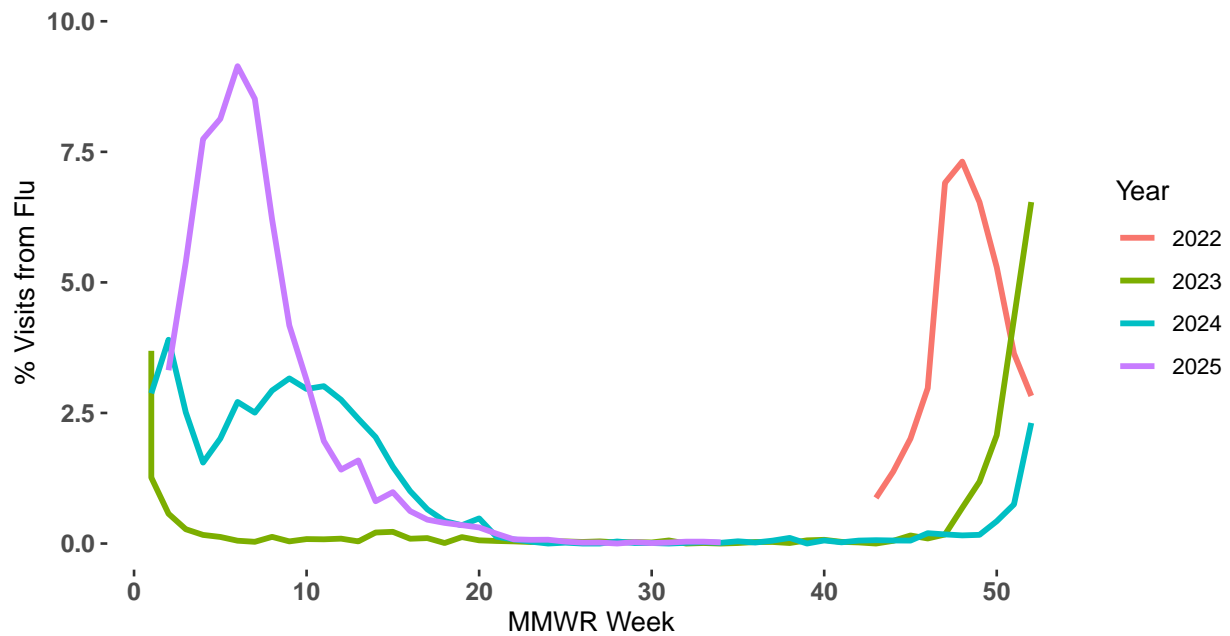
Wisconsin Department of Health Services Respiratory Laboratory Testing Data, August 16, 2025

Respiratory Illness Emergency Department Visits in Milwaukee County

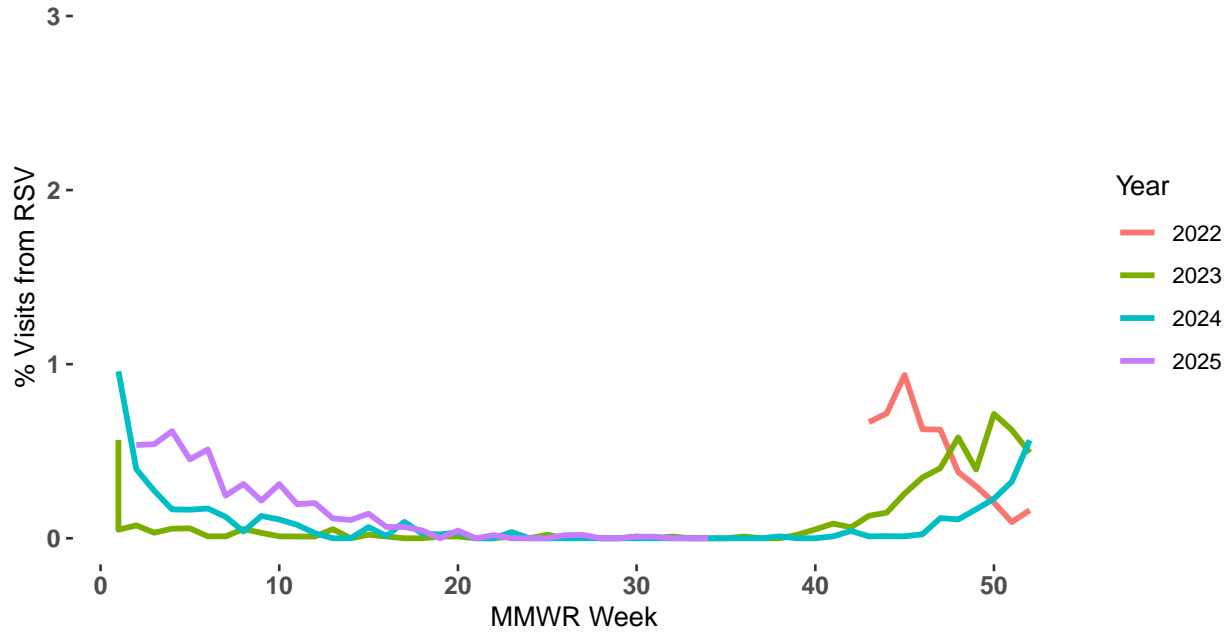
Emergency Room Visits Due to COVID-19



Emergency Room Visits Due to Flu

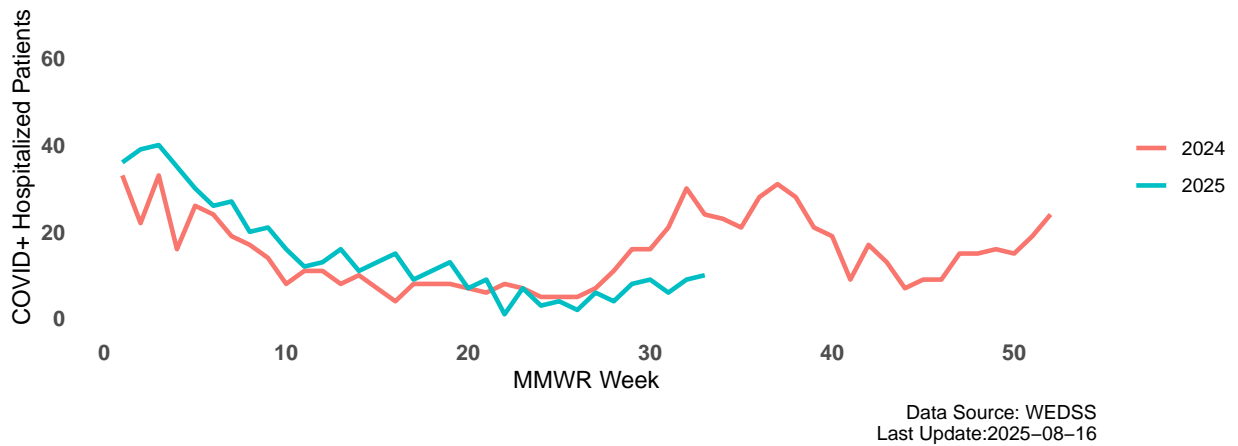


Emergency Room Visits Due to RSV



COVID-19 Activity

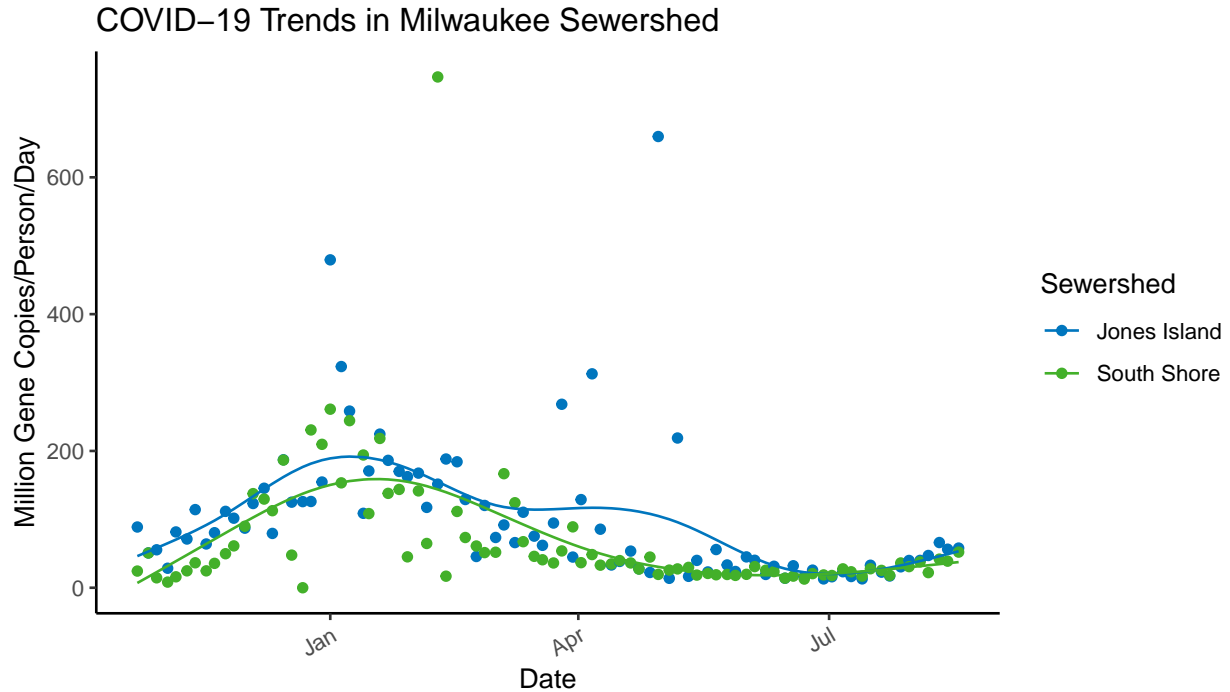
Hospitalized Patients that are COVID-19 Positive Timeline, Milwaukee County



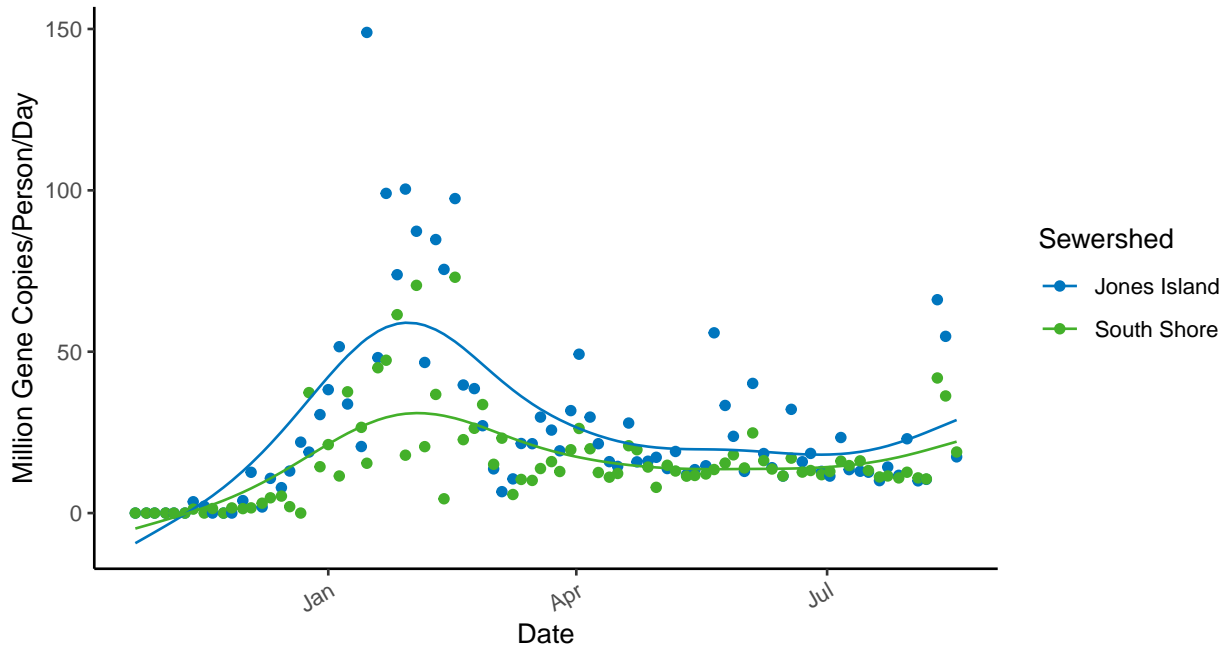
Wastewater Disease Surveillance - Respiratory Illnesses

Wastewater disease surveillance is a powerful tool that detects illness before people start to show symptoms. MHD Laboratory does routine disease surveillance from wastewater samples at Milwaukee Metropolitan Sewerage Districts collection points, Jones Island and South Shore. Samples are taken twice weekly at each site. Wastewater disease surveillance can detect a wide variety of illnesses. At MHD, we test for COVID-19, influenza A, influenza B, and RSV respiratory pathogens.

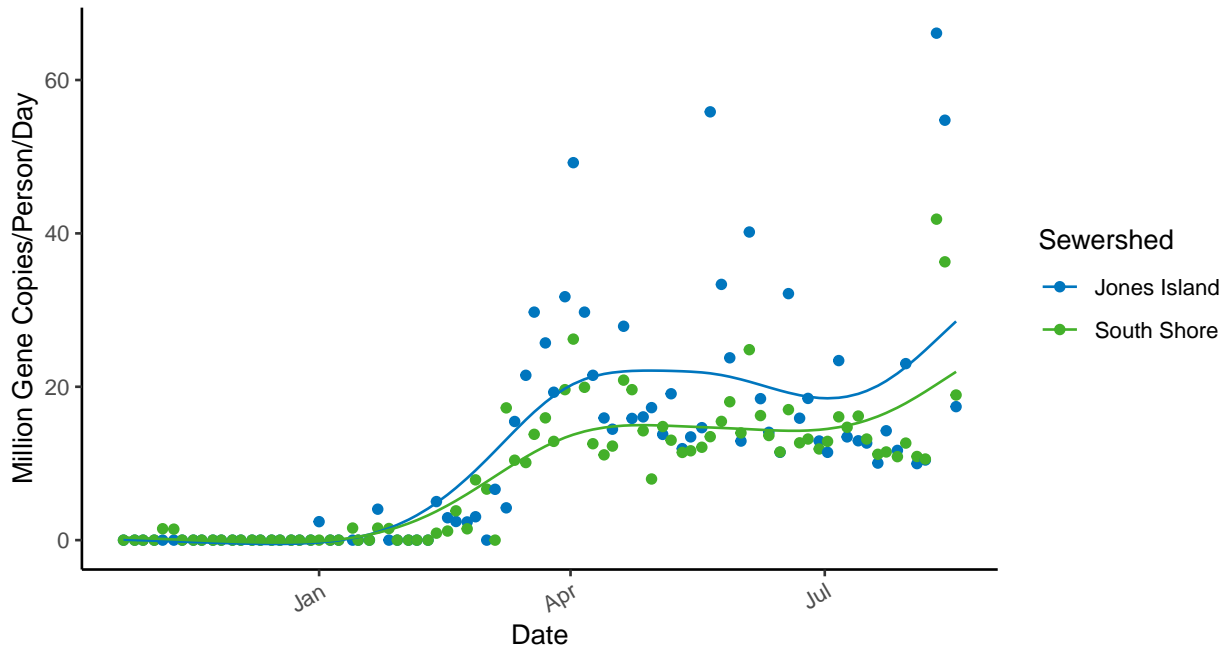
When interpreting wastewater surveillance data, the trend is the most important indicator of disease level in the population. Each of the plots below include a spline that represents the trend of illnesses.

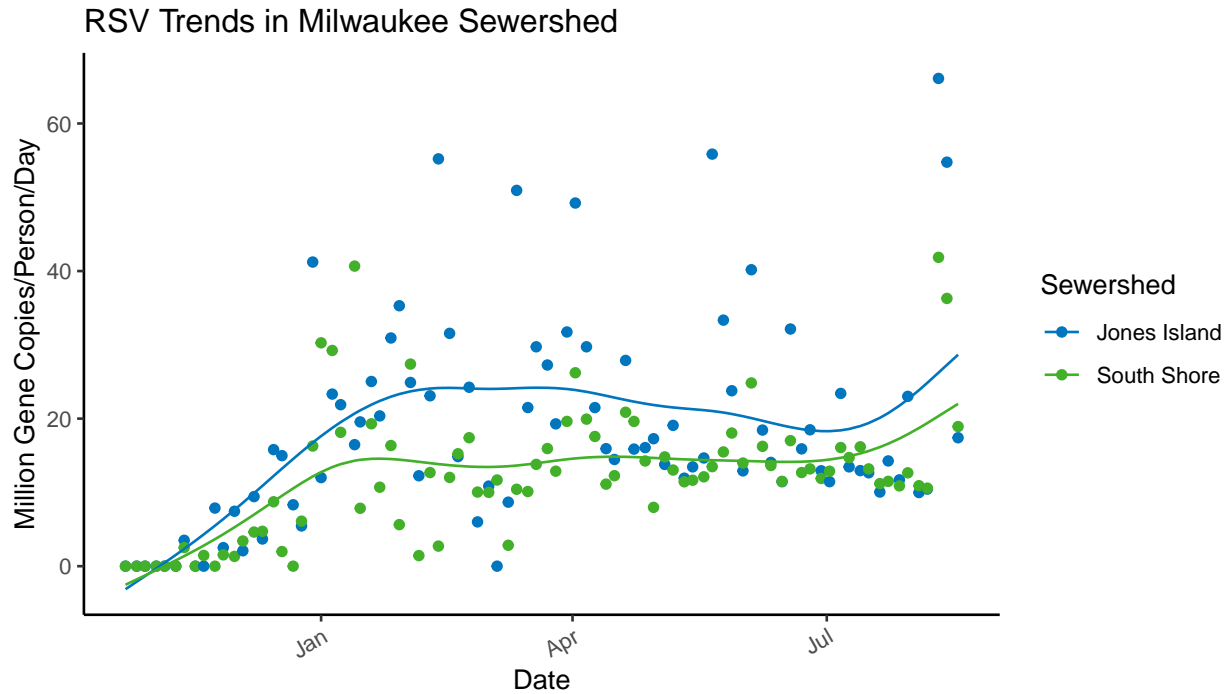


Flu A Trends in Milwaukee Sewershed



Flu B Trends in Milwaukee Sewershed





To see more interactive wastewater surveillance data, visit the MHD respiratory illness dashboard at <https://milwaukee.gov/wastewater>.

Respiratory Illness Immunization Rates of Milwaukee County Resident

The Wisconsin Department of Health Services (DHS) Immunization Program has dashboards for statewide and county specific immunization rates for influenza vaccinations, COVID-19 vaccinations, and both infant and adult RSV vaccinations. Each immunization dashboard contains demographic data for people receiving vaccines.

To access these dashboards:

- COVID-19: <https://www.dhs.wisconsin.gov/immunization/covid-19-vaccine-data.htm>
- Influenza: <https://www.dhs.wisconsin.gov/immunization/influenza.htm>
- RSV: <https://www.dhs.wisconsin.gov/immunization/rsv-vaccine-data.htm>

COVID-19 and RSV dashboards are updated weekly year-round and the influenza dashboard is updated weekly during the flu season.

Have feedback on the Milwaukee Respiratory Illness Report? Send an email with the subject line "User Feedback" to SURVNET@milwaukee.gov.