

# Milwaukee Respiratory Virus Surveillance Update

## MMWR Week 31, Ending August 3, 2024

### Contents

Overview . . . . .	2
Statewide and Regional Influenza Activity . . . . .	3
Respiratory Virus Laboratory Surveillance . . . . .	3
Milwaukee County Influenza Activity . . . . .	4
Influenza Testing Data . . . . .	5
National Influenza Activity . . . . .	5
Global Influenza Activity . . . . .	6
Influenza Vaccination Uptake by City of Milwaukee Residents, 2023-2024 Season . . . . .	7
Respiratory Illness Emergency Department Visits in Milwaukee County . . . . .	8
COVID-19 Activity . . . . .	9
SARS-CoV-2 Wastewater Surveillance . . . . .	10

## Overview

### County

- There were 0 influenza-associated hospitalizations reported in Milwaukee County during the week ending on August 3, 2024. From October 1, 2023 through August 3, 2024, there have been 692 reported influenza-associated hospitalizations in Milwaukee County (529 City of Milwaukee residents).

### State

- Influenza-like illness (ILI) activity remains low in Wisconsin.
- Influenza and RSV continued to circulate at low levels in Wisconsin.
- Emergency department, laboratory testing, hospitalization, and wastewater data all show that COVID-19 activity is increasing. ED visit data show that COVID-19 activity is increasing most among children under 5 years and people 65 years and older.

### National

- Seasonal influenza activity remains low nationally. This week no jurisdictions experienced moderate or high activity. Wisconsin had minimal activity.
- 0 influenza-associated pediatric deaths occurred during this week.
- Influenza A(H1N1)pdm09, A(H3N2) and B viruses were all co-circulating this week.

**Influenza Vaccine Composition 2022-2023 Influenza Season** All standard-dose flu shots will be quadrivalent (no trivalent standard-dose flu shots will be available this season). The quadrivalent vaccines for use in the 2023-2024 influenza season contain the following:

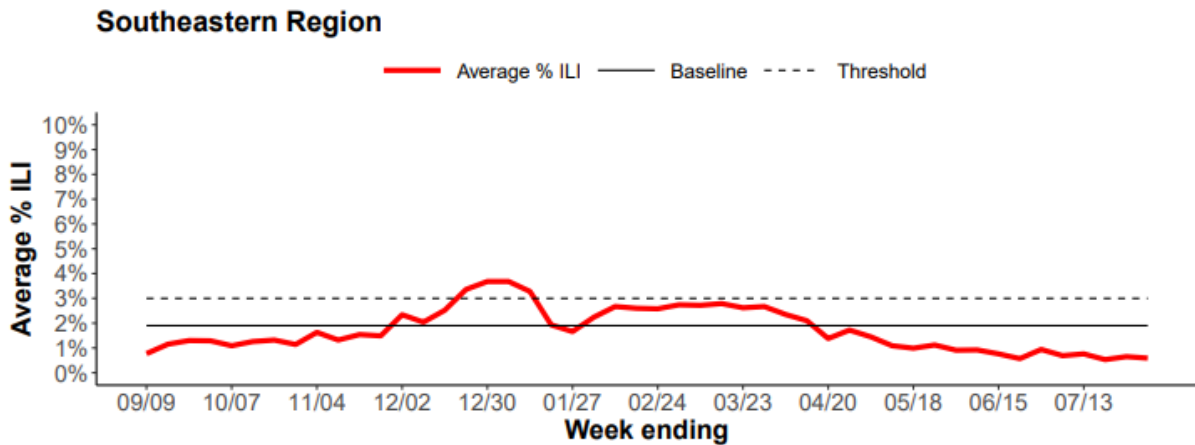
- an A/Victoria/4897/2022 (H1N1)pdm09-like virus;
- an A/Darwin/9/2021 (H3N2)-like virus;
- a B/Austria/1359417/2021 (B/Victoria lineage)-like virus; and
- a B/Phuket/3073/2013 (B/Yamagata lineage)-like virus

### CDC Pediatric Data (Since Week 40)

2023-24 To Date: Total Deaths	2022-23 To Date: Total Deaths	Pediatric Deaths This Week	Notes on Deaths
188	183	0	No influenza-associated pediatric deaths were reported to CDC during Week 31.

## Statewide and Regional Influenza Activity

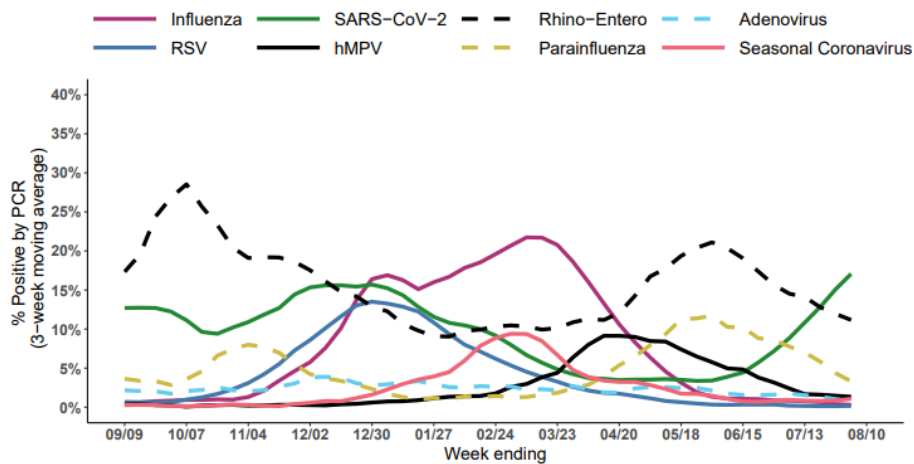
Influenza-like illness levels were below baseline statewide and below baseline in the southeastern region of the state.



Wisconsin Department of Health Services Respiratory Virus Surveillance Report, August 3, 2024

## Respiratory Virus Laboratory Surveillance

Percent positivity of respiratory viruses tested by PCR, NREVSS



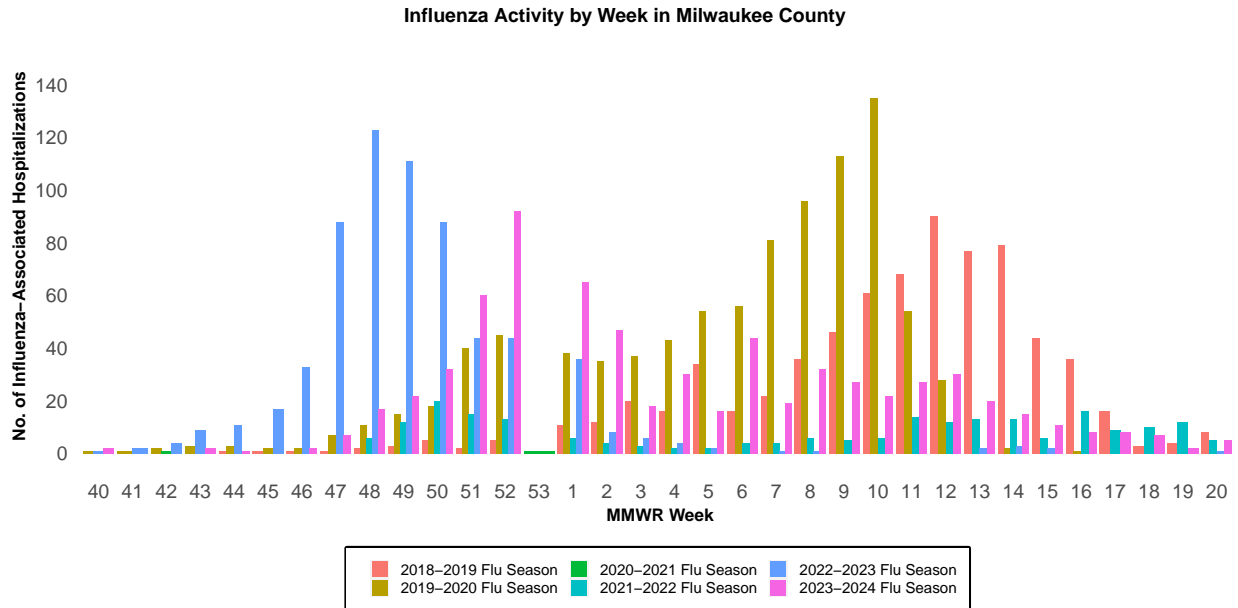
RSV = respiratory syncytial virus, hMPV = human metapneumovirus

Wisconsin Department of Health Services Respiratory Virus Surveillance Report, August 3, 2024

## Milwaukee County Influenza Activity

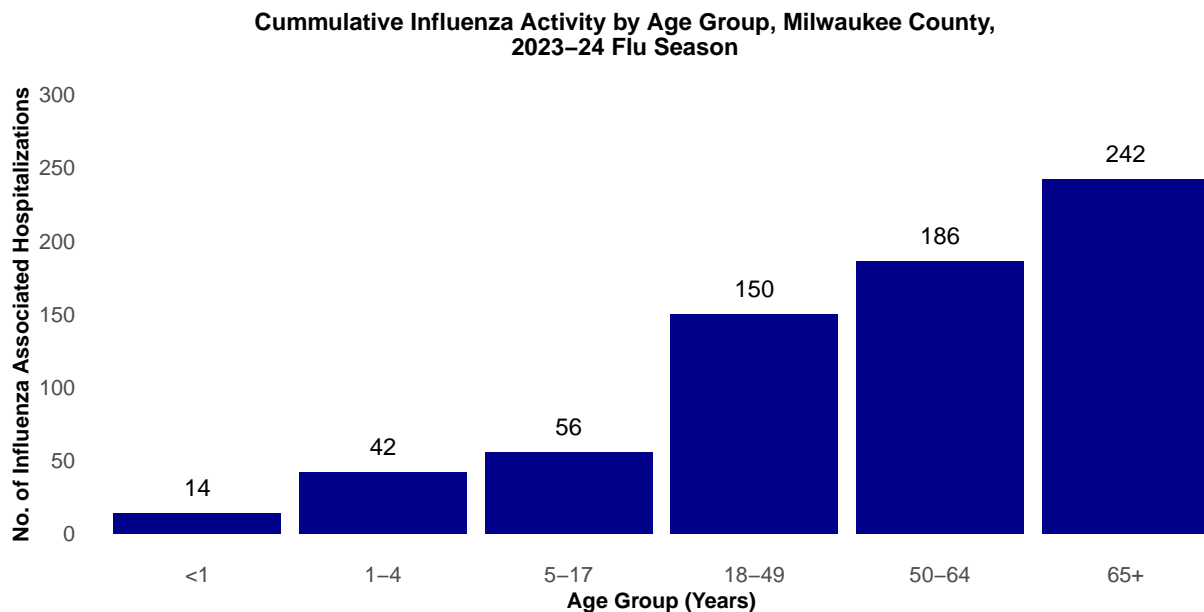
From October 1, 2023 through August 3, 2024 there have been 692 reported influenza-associated hospitalizations in Milwaukee County.

### Milwaukee County Influenza-Associated Hospitalizations



\*Flu activity was unusually low in the 2020-2021 flu season, despite high levels of testing. COVID-19 mitigation measures such as wearing face masks, social distancing, staying home, and school closures, in addition to flu vaccination, likely contributed to the low flu activity during this season.

### Milwaukee County Influenza-Associated Hospitalizations by Age Group MMWR Week 40, 2023 through Week 31, 2023



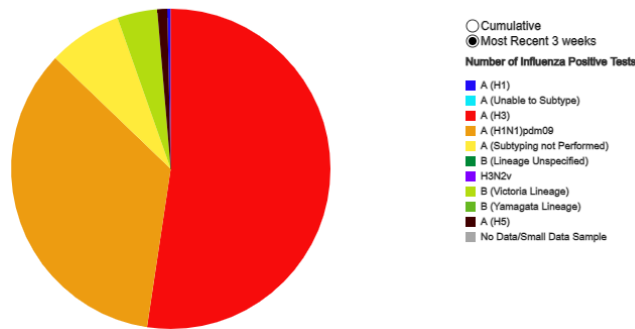
## Influenza Testing Data

### Public Health Laboratory Influenza Testing Data To-Date (Since Week 40)

Lab	Number Tested to date	Number Positive to date	Most Recent Week Percent Positive	Predominant A Subtype and Strain	Predominant B Strain	Predominant Type (A or B)
CDC	3,697,927	350,513	172/30,868 (0.6%)	H3N2	Victoria	A
WSLH	-	-	13/4,660 (0.3%)	Unknown	Unknown	A
MHDL	349	77	0/0 (0%)	N/A	N/A	B

### National Influenza Testing Data, CDC FluView

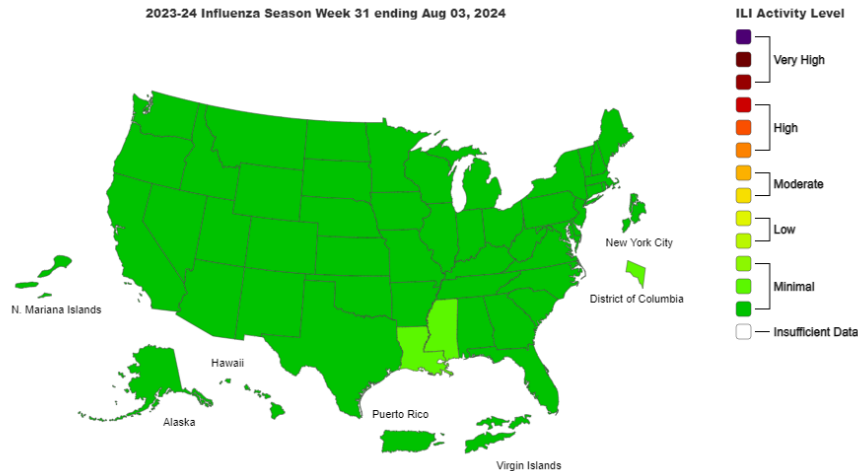
Influenza Positive Tests Reported to CDC by Public Health Laboratories, National Summary, 2023-24 Season, week ending Aug 03, 2024  
Reported by: U.S. WHO/NREVSS Collaborating Laboratories and ILINet



<http://gis.cdc.gov/grasp/fluview/fluportaldashboard.html> accessed 08/09/2024

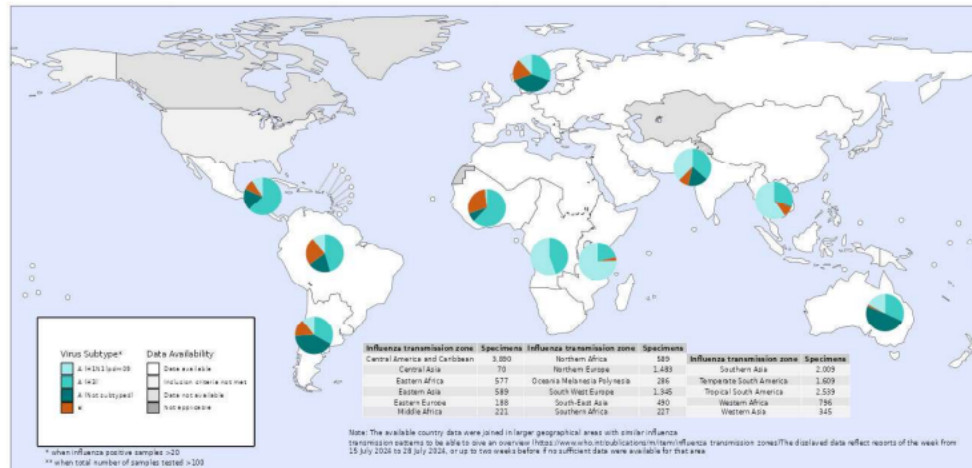
## National Influenza Activity

### Outpatient Respiratory Illness Activity Map, CDC FluView



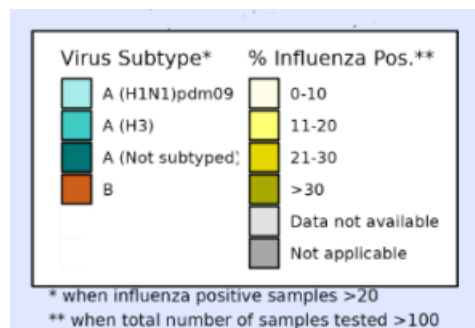
<https://www.cdc.gov/flu/weekly/index.htm#MS2> accessed 08/09/2024

## Global Influenza Activity



## Sentinel specimens testing positive for influenza, by virus type and subtype

<https://www.who.int/teams/global-influenza-programme/surveillance-and-monitoring/influenza-updates>, accessed 08/09/2024

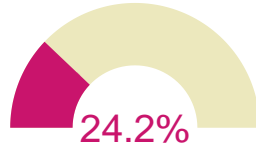


- In the Northern hemisphere, activity in temperate countries remained at interepidemic levels. Activity was elevated in a few countries in Central America and the Caribbean, Western Africa, Southern Asia, and South East Asia. Influenza A(H3N2) viruses predominated in Central America and the Caribbean, Western Africa and Northern Europe, while A(H1N1)pdm09 viruses predominated in South East Asia. A(H1N1)pdm09 and A(H3N2) viruses co-circulated in Southern Asia and Middle Africa. Reported activity increased in a few countries in Western Africa, Southern Asia, and South East Asia. In the Southern hemisphere, influenza activity remained elevated in some countries in South America, Eastern Africa, and Oceania. A(H3N2) viruses predominated in tropical South America and Oceania, while A(H1N1)pdm09 viruses predominated in Eastern Africa and temperate South America. Activity was stable or decreasing in most countries, except for one country in Eastern Africa.
- SARS-CoV-2 activity, reported from sentinel surveillance in 59 countries, was elevated in most reporting countries in Northern Europe and South-West Europe, and a few countries in Central America and the Caribbean, Tropical South America, Western Asia, Eastern Asia, Southern Asia and South East Asia. Increases were reported in some countries in Europe, Western Asia, Southern Asia and Eastern Asia.

# Influenza Vaccination Uptake by City of Milwaukee Residents, 2023-2024 Season

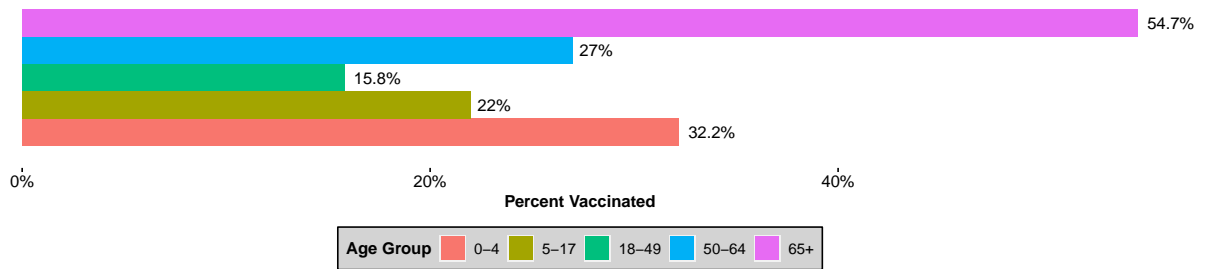
## Overview

- City of Milwaukee residents who have received at least one dose of flu vaccinations as of August 8, 2024:

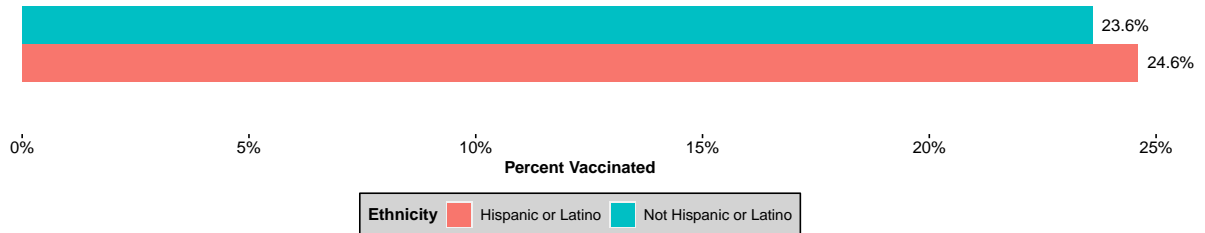


## Influenza Vaccination Coverage for 2023-2024 Season by Demographics

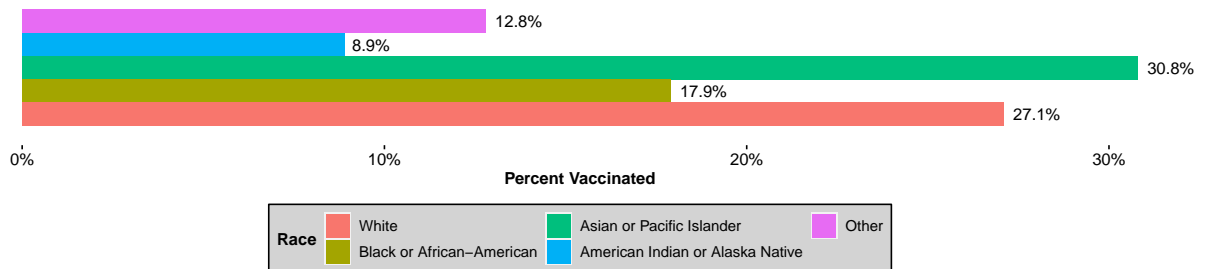
### Influenza Vaccinations by Age Group



### Influenza Vaccinations by Ethnicity

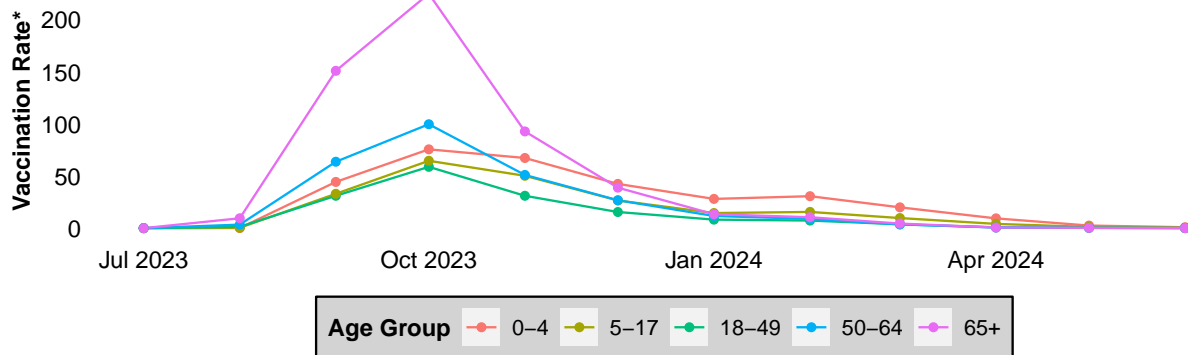


### Influenza Vaccinations by Race



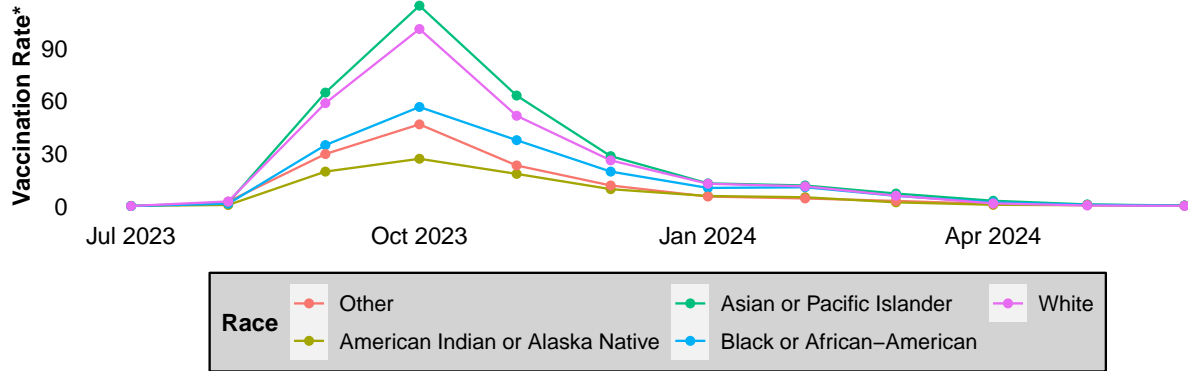
## Vaccination Uptake Timelines

### Influenza Vaccinations for Milwaukee Residents, 2023–24 Season by Month and Age Group



\*Vaccination rates are per 1000 residents using 2021 ACS 5-year population estimates

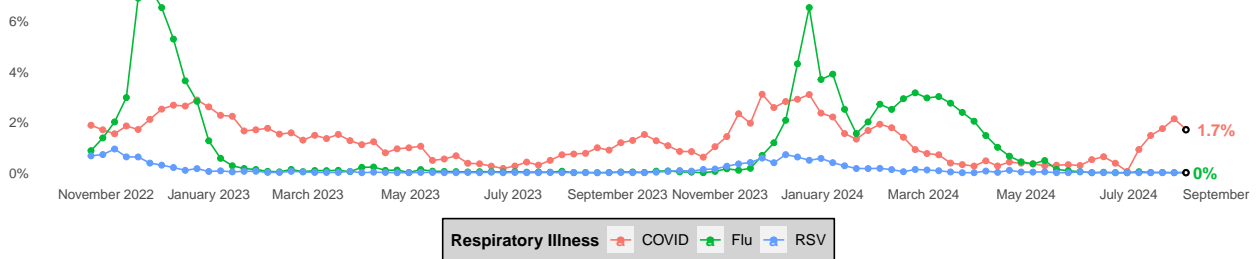
### Influenza Vaccinations for Milwaukee Residents, 2023–24 Season by Month and Race



\*Vaccination rates are per 1000 residents using 2021 ACS 5-year population estimates

## Respiratory Illness Emergency Department Visits in Milwaukee County

### Percent of All Emergency Room Visits Due to COVID, Flu, or RSV in Milwaukee County



Please Note: Ascension recently was impacted by a cyberattack. As a result, Ascension facilities are not reporting visits into ESSENCE and we do not know when reporting will resume.

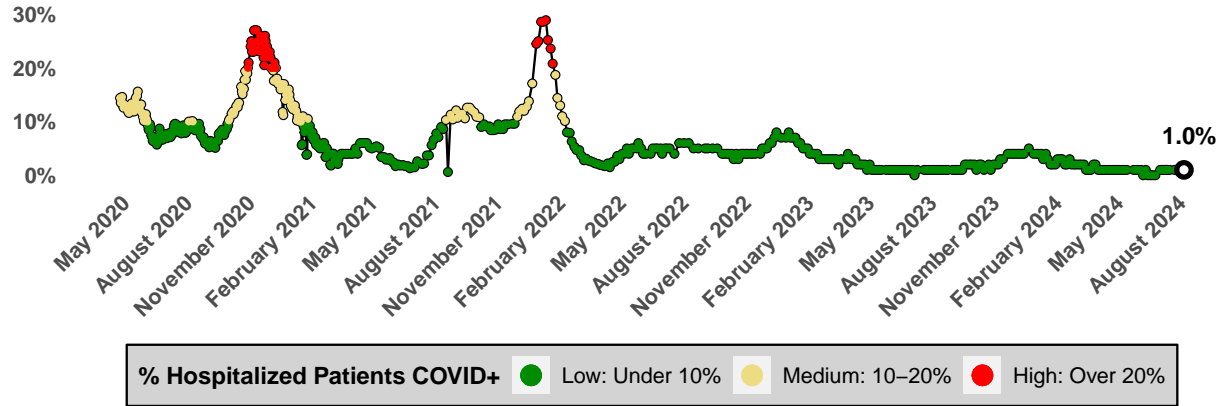


## COVID-19 Activity

### City of Milwaukee COVID-19 Vaccination Uptake

- As of August 8, 2024, 13.1% of city residents are up-to-date with their COVID-19 vaccinations.

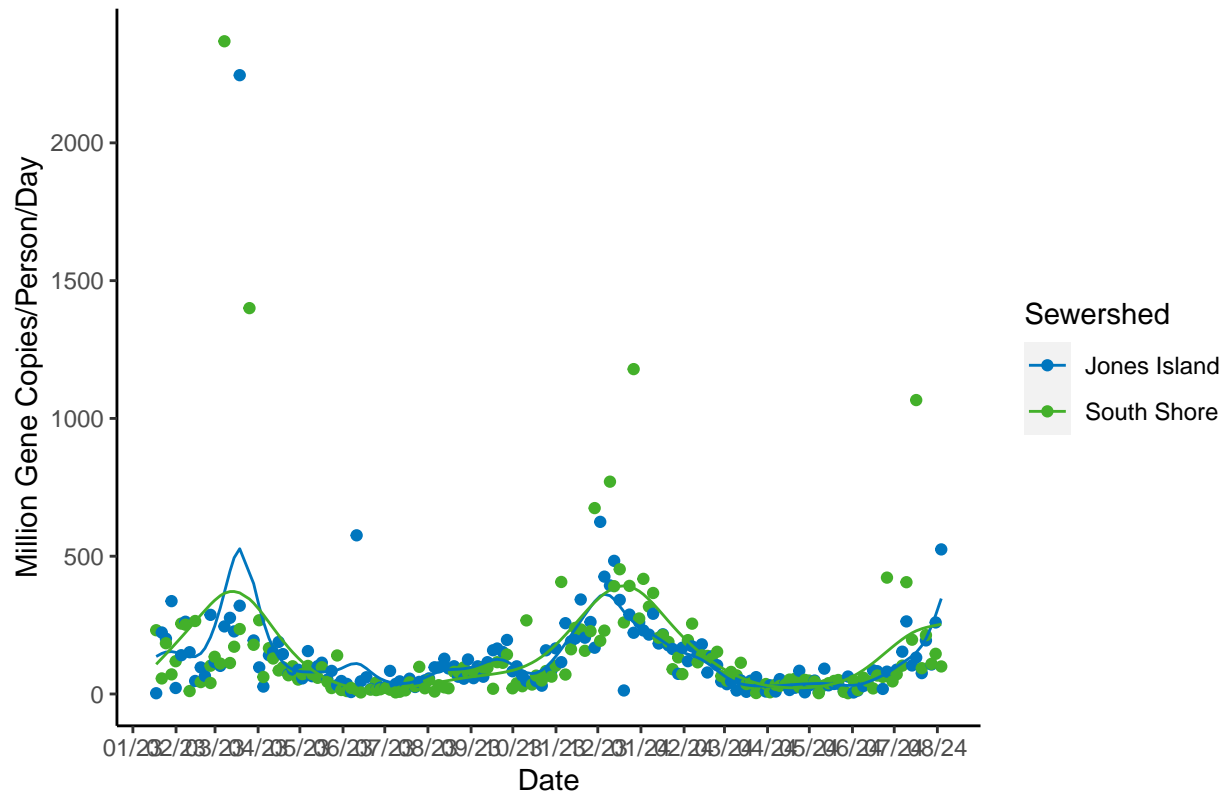
### Hospitalized Patients that are COVID-19 Positive Timeline, Milwaukee County



Data Source: HERC Region 7  
Last Update: 2024-08-12

## SARS-CoV-2 Wastewater Surveillance

### COVID-19 Trends in Milwaukee Sewersheds



**Category:** Compared to the last 6 months of data, the average of the last three most recent SARS-CoV-2 measurements are in the 98 percentile for Jones Island Sewershed and are in the 80 percentile for South Shore Sewershed. These measurements are *high* for Jones Island and *high* for South Shore.

**Trajectory:** Wastewater concentrations of SARS-CoV-2 *significantly increased* in the Jones Island or South Shore sewersheds.