

Milwaukee Respiratory Virus Surveillance Update

MMWR Week 27, Ending July 8, 2023

Contents

Overview	2
Statewide and Regional Influenza Activity	3
Respiratory Virus Laboratory Surveillance	3
Milwaukee County Influenza Activity	4
Influenza Testing Data	5
National Influenza Activity	5
Global Influenza Activity	6
COVID-19 Activity	7
SARS-CoV-2 Wastewater Surveillance	8

Overview

County

- There were 0 influenza-associated hospitalizations reported in Milwaukee County during the week ending in July 8, 2023. From October 1, 2022 through July 8, 2023, there have been 645 reported influenza-associated hospitalizations in Milwaukee County (472 City of Milwaukee residents).

State

- Influenza-like illness (ILI) levels continued to remain below baseline both statewide and in the southeastern region of the state.
- Outpatient ILI activity continues to decline in Wisconsin. The percent positive influenza lab tests decreased slightly to 0.7%.
- Rhinovirus/Enterovirus is the predominant virus for this week.

National

- Seasonal influenza activity remains low nationally. One state/jurisdiction experienced moderate ILI activity. Wisconsin had minimal ILI activity in outpatient visits.
- 2 influenza-associated pediatric deaths were reported during this week.
- Influenza A viruses were the most frequently reported this week.

Influenza Vaccine Composition 2022-2023 Influenza Season All standard-dose flu shots will be quadrivalent (no trivalent standard-dose flu shots will be available this season). The quadrivalent vaccines for use in the 2022-2023 influenza season contain the following:

- an A/Victoria/2570/2019 (H1N1)pdm09-like virus;
- an A/Darwin/9/2021 (H3N2)-like virus;
- a B/Austria/1359417/2021-like virus (B/Victoria lineage); and
- a B/Phuket/3073/2013-like virus (B/Yamagata lineage)

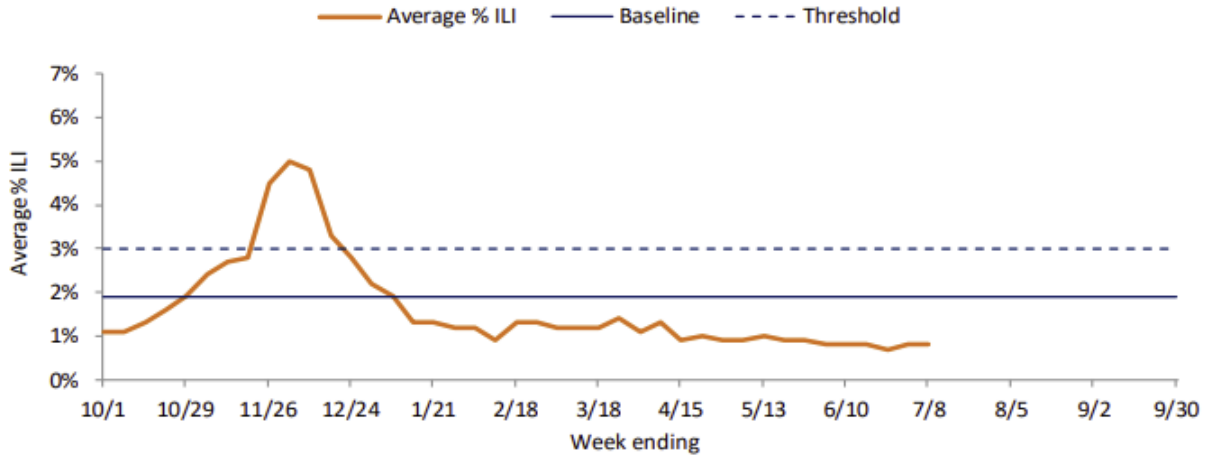
CDC Pediatric Data (Since Week 40)

2022-23 To Date: Total Deaths	2021-22 To Date: Total Deaths	Pediatric Deaths Reported This Week	Notes on Deaths
162	46	2	Two influenza-associated pediatric deaths occurring during the 2022-2023 season were reported to CDC during week 27. One death was associated with an influenza B virus with no lineage determined and occurred during week 8 (the week ending February 25, 2023). The other death was associated with an influenza A(H1N1) virus and occurred during week 18 (the week ending May 6, 2023).

Statewide and Regional Influenza Activity

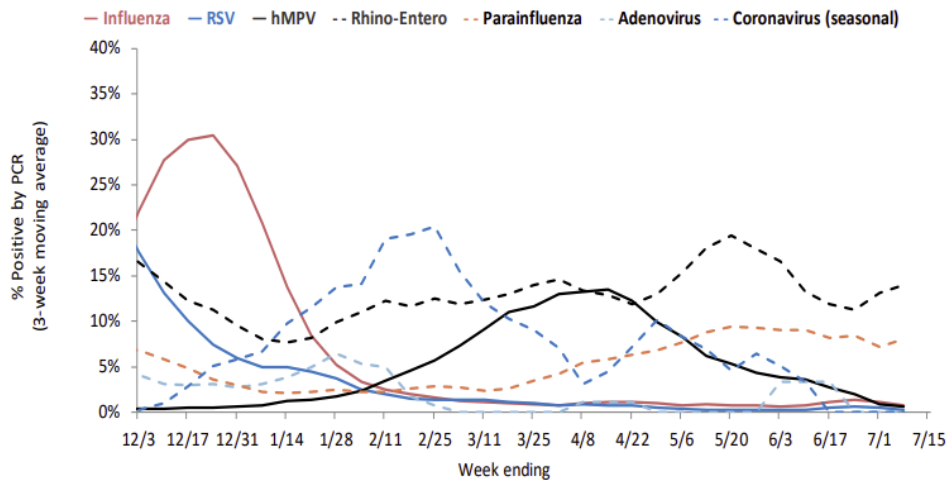
Influenza-like illness levels were below baseline statewide and in the southeastern region of the state.

Southeastern Region



Wisconsin Department of Health Services Respiratory Virus Surveillance Report, July 8, 2023

Respiratory Virus Laboratory Surveillance



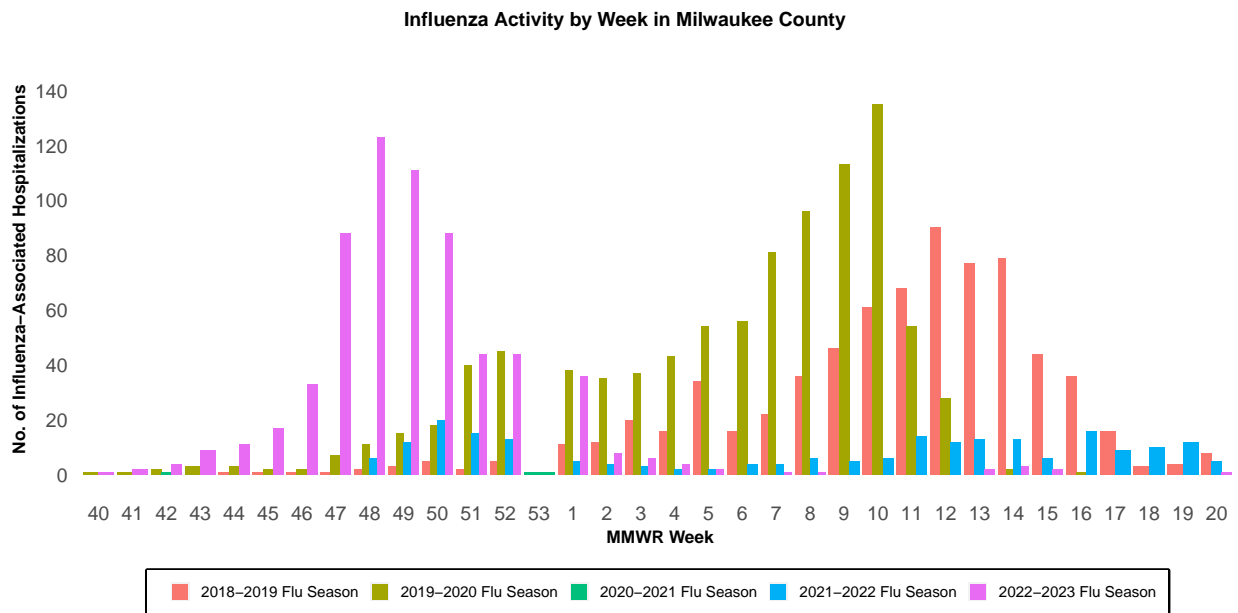
RSV = respiratory syncytial virus, hMPV = human metapneumovirus

Wisconsin Department of Health Services Respiratory Virus Surveillance Report, July 8, 2023

Milwaukee County Influenza Activity

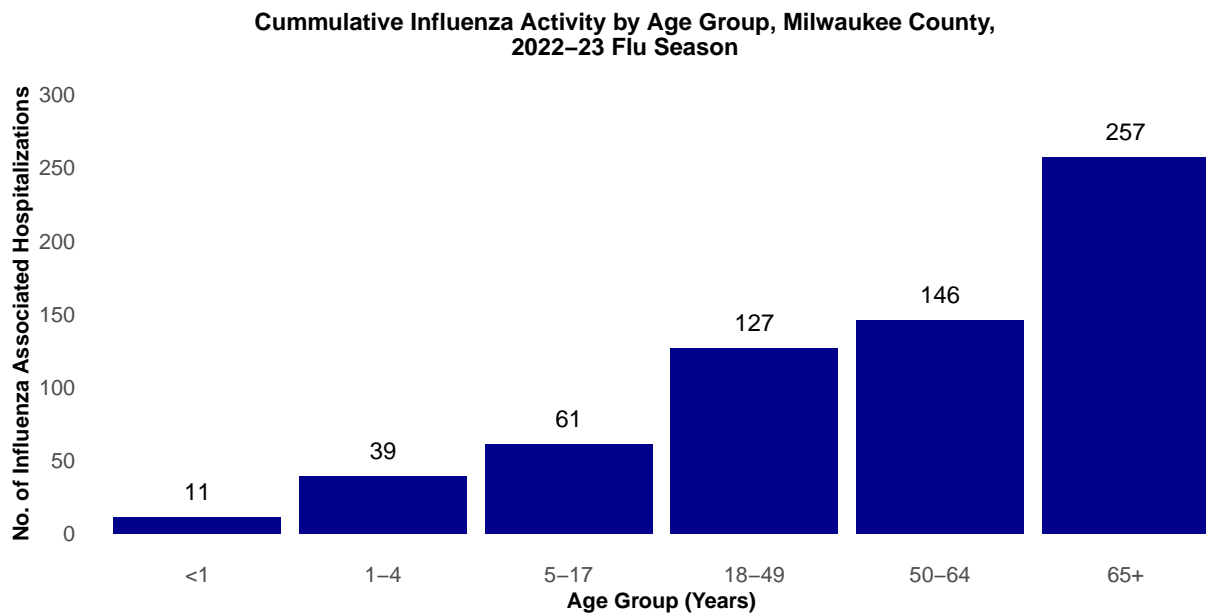
From October 1, 2022 through July 8, 2023 there have been 645 reported influenza-associated hospitalizations in Milwaukee County. Statewide hospitalization data are not yet available.

Milwaukee County Influenza-Associated Hospitalizations



*Flu activity was unusually low in the 2020-2021 flu season, despite high levels of testing. COVID-19 mitigation measures such as wearing face masks, social distancing, staying home, and school closures, in addition to flu vaccination, likely contributed to the low flu activity during this season.

Milwaukee County Influenza-Associated Hospitalizations by Age Group MMWR Week 40, 2022 through Week 27, 2023



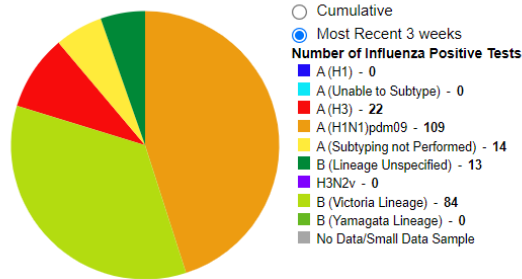
Influenza Testing Data

Public Health Laboratory Influenza Testing Data To-Date (Since Week 40)

Lab	Number Tested to date	Number Positive to date	Most Recent Week Percent Positive	Predominant A Subtype and Strain	Predominant B Strain	Predominant Type (A or B)
CDC	266,239	30,295	44/1,456(3.0%)	(H1N1)pdm09	Victoria	A
WSLH	-	-	13/1,866(0.7%)	Unknown	Unknown	A
MHDL	75	10	0/1(0.0%)	H3N2	N/A	A

National Influenza Testing Data, CDC FluView

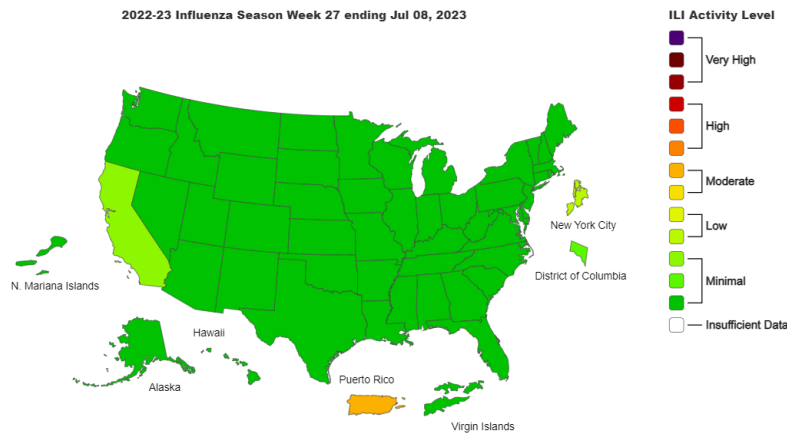
Influenza Positive Tests Reported to CDC by Public Health Laboratories, National Summary, 2022-23 Season, week ending Jul 08, 2023
 Reported by: U.S. WHO/NREVSS Collaborating Laboratories and ILINet
[Download Image](#)



<http://gis.cdc.gov/grasp/fluview/fluportaldashboard.html> accessed 07/19/2023

National Influenza Activity

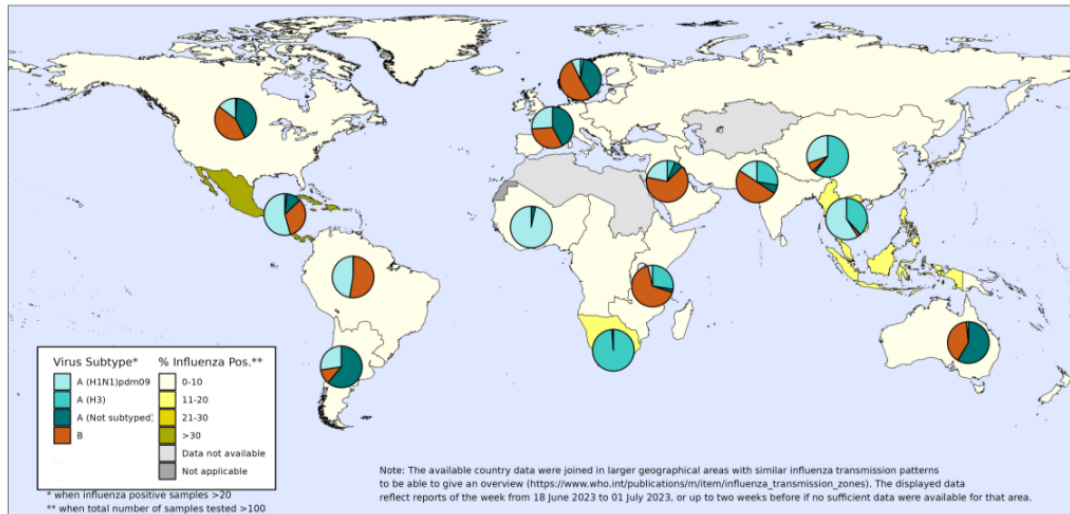
Outpatient Respiratory Illness Activity Map, CDC FluView



<https://www.cdc.gov/flu/weekly/index.htm#MS2> accessed 07/19/2023

Global Influenza Activity

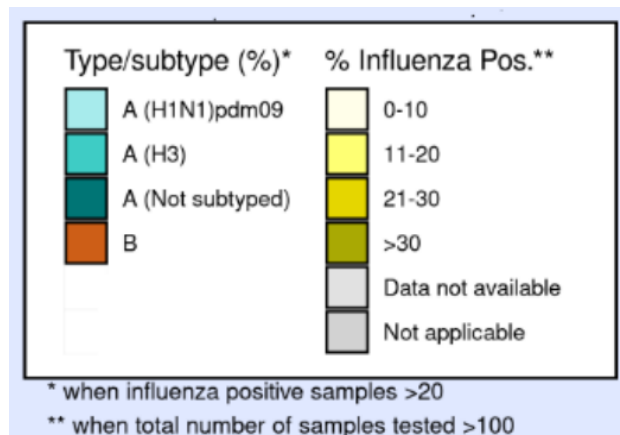
Percentage of respiratory specimens testing positive for influenza, by influenza transmission zone¹. Map generated on 7 July 2023.



The boundaries and names shown and the designations used on this map do not imply the expression of any opinion whatsoever on the part of the World Health Organization concerning the legal status of any country, territory, city or area or of its authorities, or concerning the delimitation of its frontiers or boundaries. Dotted and dashed lines on maps represent approximate border lines for which there may not yet be full agreement.

Data source: Global Influenza Surveillance and Response System (GISRS), FluNet (www.who.int/tools/fluNet)
Copyright WHO 2023. All rights reserved.

<https://www.who.int/teams/global-influenza-programme/surveillance-and-monitoring/influenza-updates>, accessed 07/19/2023



- Globally, influenza detections remained low, but in the southern hemisphere, some countries reported increased influenza detections in recent weeks while detections in other countries seemed to have peaked.
- In the temperate zones of the northern hemisphere, influenza activity was reported at low levels or below seasonal threshold in most reporting countries. Detections were predominantly influenza A(H1N1)pdm09 and B viruses.

COVID-19 Activity

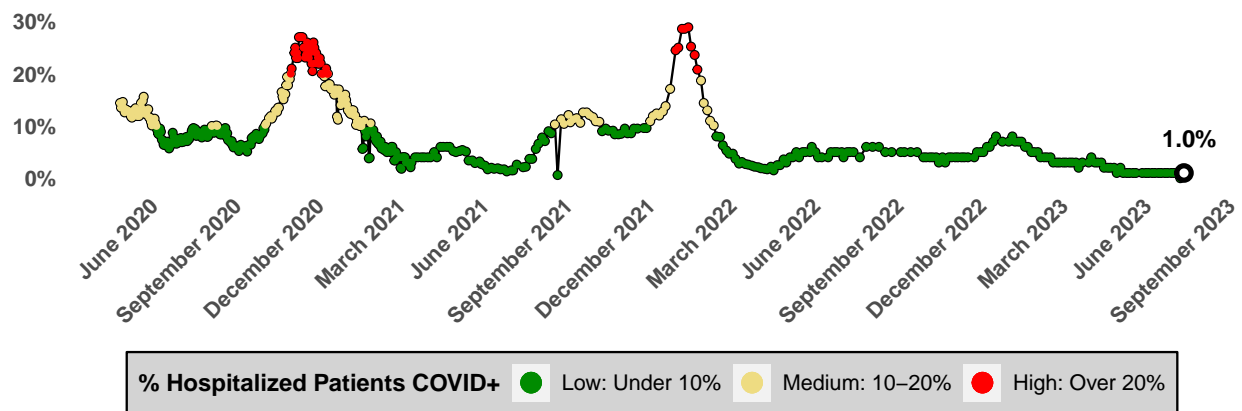
City of Milwaukee Overview

- From March 1, 2020 through July 20, 2023, there have been 178237 reported confirmed positive COVID-19 cases and 1120 COVID-19 associated deaths in the City of Milwaukee.
- Considering vaccination status, as of July 20, 2023:
 - 55.6% of city residents have completed their primary COVID-19 vaccination series
 - 29.3% of city residents have received at least one COVID-19 booster

COVID-19 Hospital Admission Metrics, Updated July 20, 2023

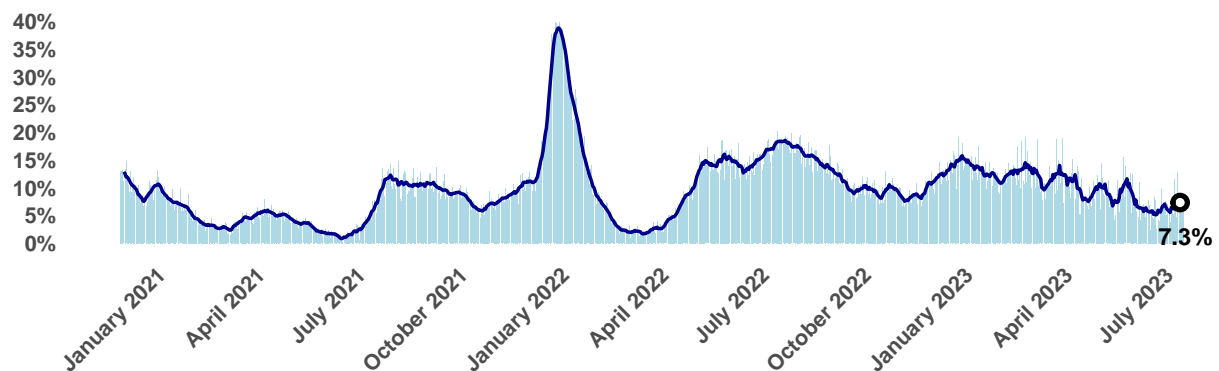
COVID-19 Hospital Admission Level - Low		
County Weekly Metrics Used to Determine the COVID-19 Hospital Admission Level		Comparison to Prior Week
New hospital admissions of confirmed COVID-19, past week (total)	10	Down from 14
New COVID-19 admissions per 100,000 population	0.4	Down from 0.9
% Staffed inpatient beds occupied by patients with confirmed COVID-19 past week (average)	0.6%	No change

Hospitalized Patients that are COVID-19 Positive Timeline, Milwaukee County



Data Source: HERC Region 7
Last Update: 2023-07-17

Percent Positive COVID-19 Tests by Day with 7-Day Rolling Average, City of Milwaukee



Please Note: Positivity is presented as positivity by PCR testing only. Changes to testing policies over time and rising usage of at-home tests as opposed to laboratory-based tests may affect positivity rates and incidence rates and should be interpreted accordingly.

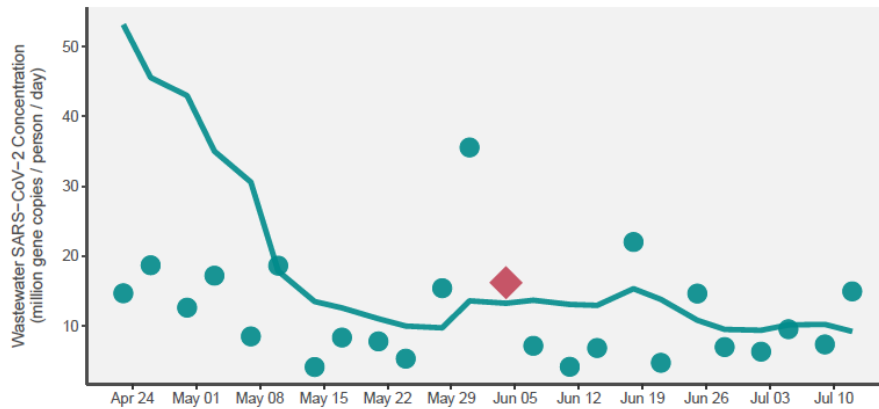
SARS-CoV-2 Wastewater Surveillance

Category: Compared with the last 6 months of data, the average of the three most recent SARS-CoV-2 measurements is **low** for Jones Island and **low** for the South Shore sewershed.

Trajectory: Between 06/28/2023 and 07/12/2023, wastewater concentrations of SARS-CoV-2 **did not significantly increase** in the Jones Island or South Shore sewersheds.

Milwaukee (Jones Island) ■ Estimated population served: 470,007	Category: Low	Trajectory: No alert
---	-------------------------	--------------------------------

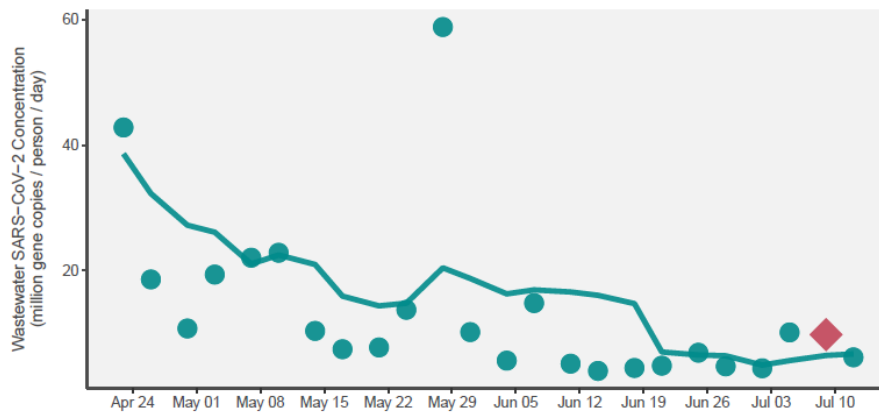
90-Day Wastewater Trend for Milwaukee Jones Island (Apr 21, 2023–Jul 20, 2023)



◆ - Significant Increase

Milwaukee (South Shore) ■ Estimated population served: 615,934	Category: Low	Trajectory: No alert
--	-------------------------	--------------------------------

90-Day Wastewater Trend for Milwaukee South Shore (Apr 21, 2023–Jul 20, 2023)



◆ - Significant Increase