

Milwaukee Respiratory Virus Surveillance Update

MMWR Week 26, Ending June 29, 2024

Contents

Overview	2
Statewide and Regional Influenza Activity	3
Respiratory Virus Laboratory Surveillance	3
Milwaukee County Influenza Activity	4
Influenza Testing Data	5
National Influenza Activity	5
Global Influenza Activity	6
Influenza Vaccination Uptake by City of Milwaukee Residents, 2023-2024 Season	7
Respiratory Illness Emergency Department Visits in Milwaukee County	8
COVID-19 Activity	9
SARS-CoV-2 Wastewater Surveillance	10

Overview

County

- There were 0 influenza-associated hospitalizations reported in Milwaukee County during the week ending on June 29, 2024. From October 1, 2023 through June 29, 2024, there have been 690 reported influenza-associated hospitalizations in Milwaukee County (526 City of Milwaukee residents).

State

- COVID-19, influenza, and RSV continued to circulate at low levels in Wisconsin.
- Influenza-like illness (ILI) activity remains low in Wisconsin.
- Emergency department, laboratory testing, hospitalization, and wastewater data all show that COVID-19 activity is increasing.

National

- Seasonal influenza activity remains low nationally. This week no jurisdictions experienced moderate or high activity. Wisconsin had minimal activity.
- 3 influenza-associated pediatric deaths occurred during this week.
- Influenza A(H1N1)pdm09, A(H3N2) and B viruses were all co-circulating this week.

Influenza Vaccine Composition 2022-2023 Influenza Season All standard-dose flu shots will be quadrivalent (no trivalent standard-dose flu shots will be available this season). The quadrivalent vaccines for use in the 2023-2024 influenza season contain the following:

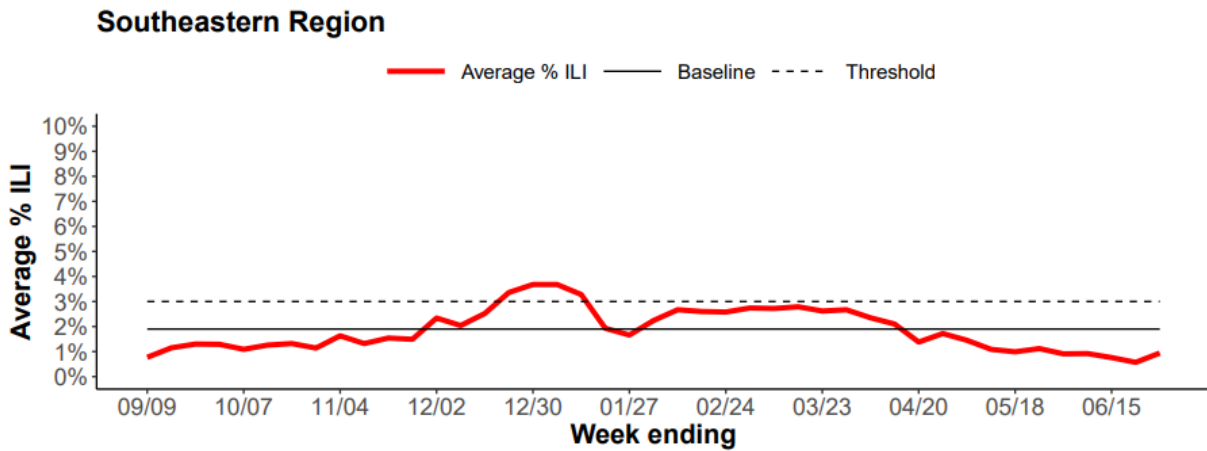
- an A/Victoria/4897/2022 (H1N1)pdm09-like virus;
- an A/Darwin/9/2021 (H3N2)-like virus;
- a B/Austria/1359417/2021 (B/Victoria lineage)-like virus; and
- a B/Phuket/3073/2013 (B/Yamagata lineage)-like virus

CDC Pediatric Data (Since Week 40)

2023-24 To Date: Total Deaths	2022-23 To Date: Total Deaths	Pediatric Deaths This Week	Notes on Deaths
184	180	3	Three influenza-associated pediatric deaths occurring during the 2023-2024 season were reported to CDC during Week 26. The deaths occurred during weeks 3, 17 and 18 of 2024 (the weeks ending January 20, April 27, and May 4 of 2024). Two deaths were associated with influenza A viruses and one death was associated with an influenza B virus with no lineage determined. One of the influenza A viruses had subtyping performed and it was an A(H1N1)pdm09 virus.

Statewide and Regional Influenza Activity

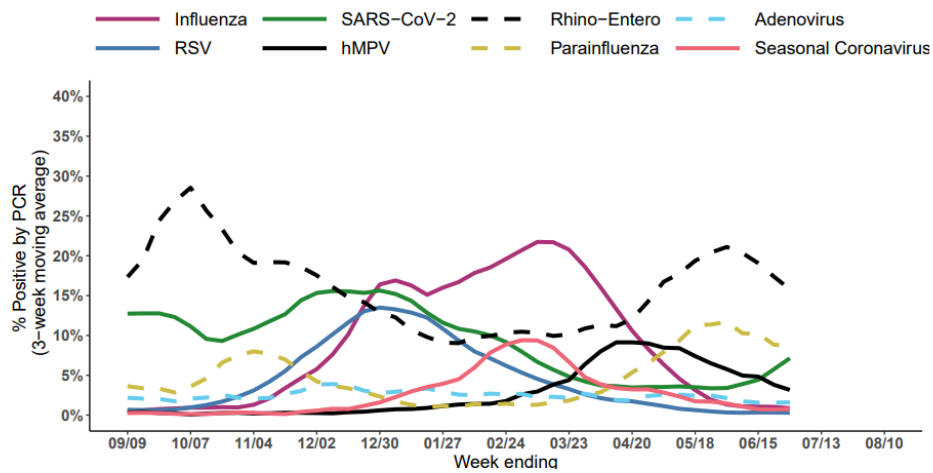
Influenza-like illness levels were below baseline statewide and below baseline in the southeastern region of the state.



Wisconsin Department of Health Services Respiratory Virus Surveillance Report, June 29, 2024

Respiratory Virus Laboratory Surveillance

Percent positivity of respiratory viruses tested by PCR, NREVSS



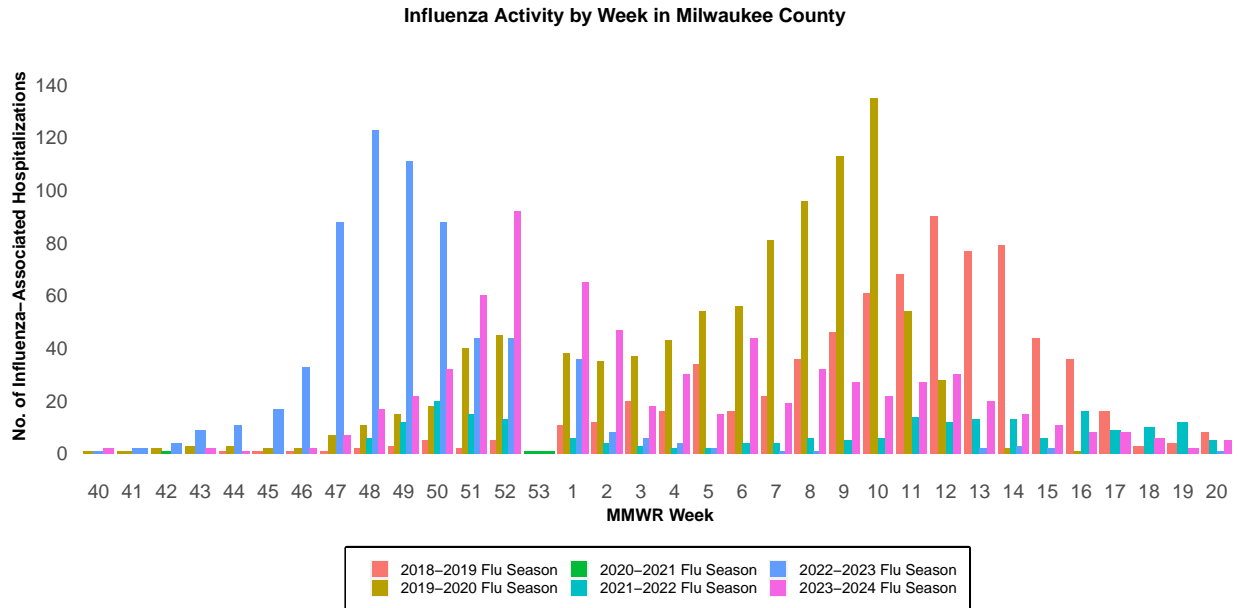
RSV = respiratory syncytial virus, hMPV = human metapneumovirus

Wisconsin Department of Health Services Respiratory Virus Surveillance Report, June 29, 2024

Milwaukee County Influenza Activity

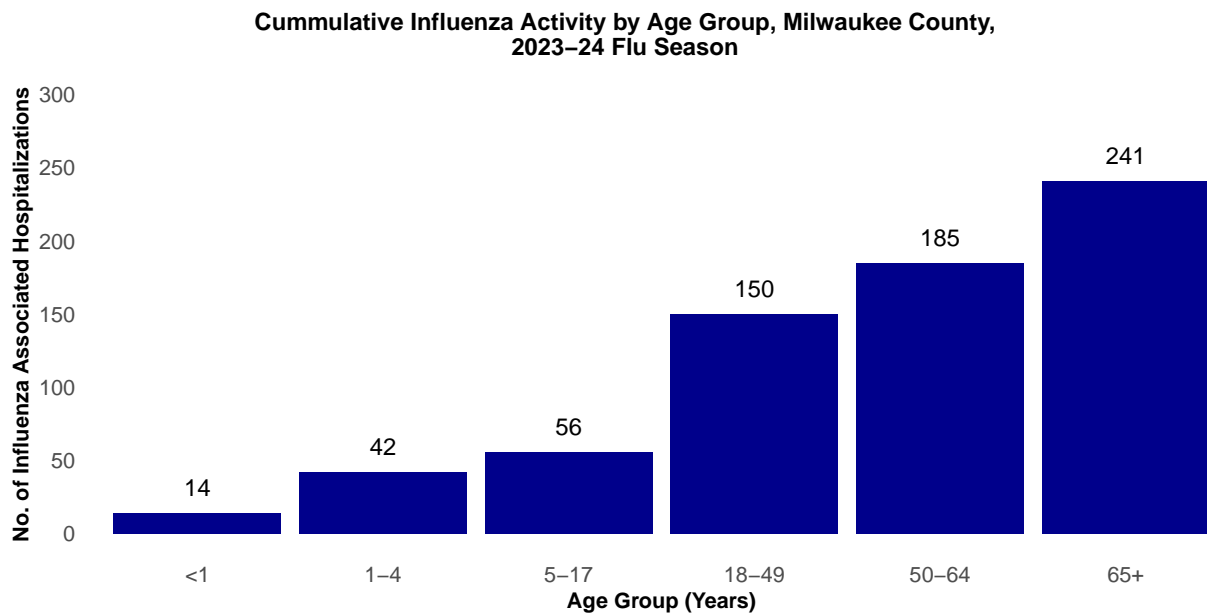
From October 1, 2023 through June 29, 2024 there have been 690 reported influenza-associated hospitalizations in Milwaukee County.

Milwaukee County Influenza-Associated Hospitalizations



*Flu activity was unusually low in the 2020-2021 flu season, despite high levels of testing. COVID-19 mitigation measures such as wearing face masks, social distancing, staying home, and school closures, in addition to flu vaccination, likely contributed to the low flu activity during this season.

Milwaukee County Influenza-Associated Hospitalizations by Age Group MMWR Week 40, 2023 through Week 26, 2023



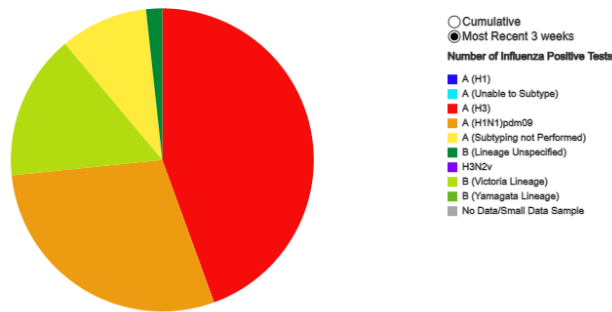
Influenza Testing Data

Public Health Laboratory Influenza Testing Data To-Date (Since Week 40)

Lab	Number Tested to date	Number Positive to date	Most Recent Week Percent Positive	Predominant A Subtype and Strain	Predominant B Strain	Predominant Type (A or B)
CDC	3,488,352	348,710	242/25,442 (1.0%)	H3N2	Victoria	A
WSLH	-	-	31/4,022 (0.8%)	Unknown	Unknown	A
MHDL	331	77	0/11 (0%)	N/A	N/A	B

National Influenza Testing Data, CDC FluView

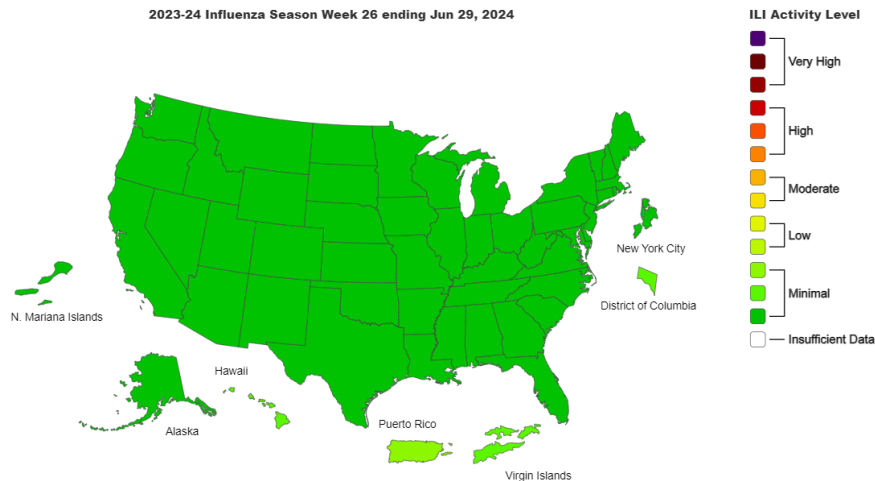
Influenza Positive Tests Reported to CDC by Public Health Laboratories, National Summary, 2023-24 Season, week ending Jun 29, 2024
Reported by: U.S. WHO/NREVSS Collaborating Laboratories and ILINet



<http://gis.cdc.gov/grasp/fluview/fluportaldashboard.html> accessed 07/05/2024

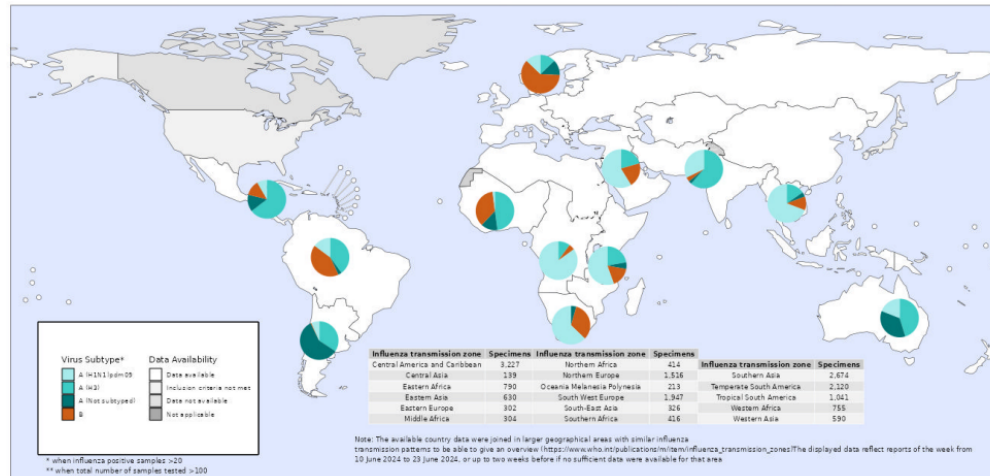
National Influenza Activity

Outpatient Respiratory Illness Activity Map, CDC FluView



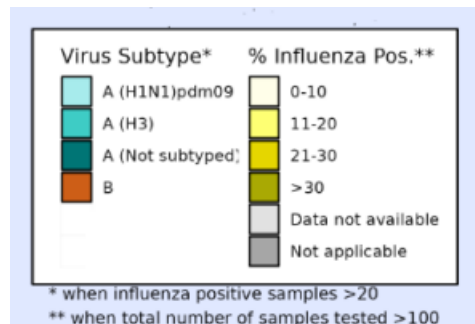
<https://www.cdc.gov/flu/weekly/index.htm#MS2> accessed 07/05/2024

Global Influenza Activity



Sentinel specimens testing positive for influenza, by virus type and subtype

<https://www.who.int/teams/global-influenza-programme/surveillance-and-monitoring/influenza-updates>, accessed 07/05/2024

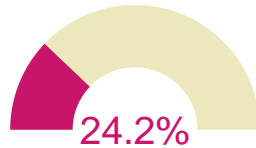


- In the Northern hemisphere, elevated influenza activity was reported in countries in Central America and the Caribbean (due to A(H3N2)viruses), Western Africa (due to A(H3N2) and B viruses), Southern Asia (due to A(H3N2) and A(H1N1)pdm09 viruses), and South East Asia (due to A(H1N1)pdm09 viruses), and with activity increasing in many of these countries. Activity in temperate countries remains low at interepidemic levels. In the Southern hemisphere, influenza activity continues to be elevated in countries in South America (due to A(H3N2) viruses), Eastern Africa (due to A(H1N1)pdm09 and B viruses), Southern Africa (due to A(H1N1)pdm09 and B viruses), and Oceania A(H1N1)pdm09 and A(H3N2) viruses) but there are indications that activity may have peaked in some countries in South America and in Southern Africa.
- SARS-CoV-2 activity, reported from sentinel surveillance in 57 countries, was elevated and increasing in some countries in South West Europe, Northern Europe, and South East Asia. Activity continues to be elevated in some countries in Central America and the Caribbean, Western Africa, and Western Asia but at similar or lower levels than the prior reporting week.

Influenza Vaccination Uptake by City of Milwaukee Residents, 2023-2024 Season

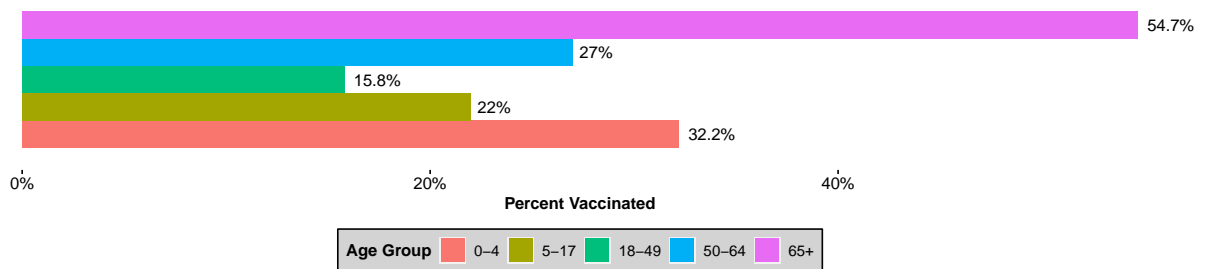
Overview

- City of Milwaukee residents who have received at least one dose of flu vaccinations as of July 3, 2024:

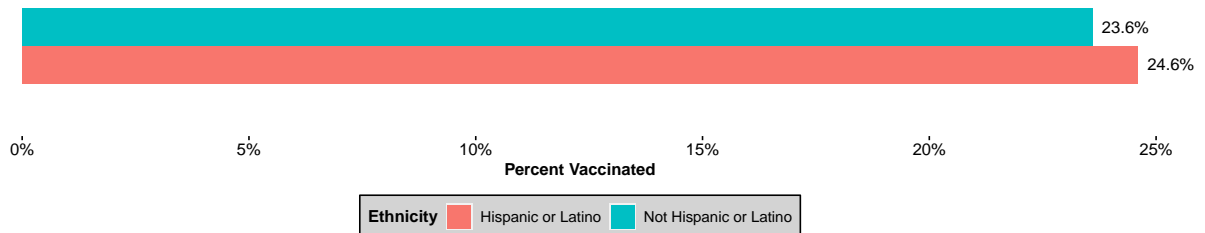


Influenza Vaccination Coverage for 2023-2024 Season by Demographics

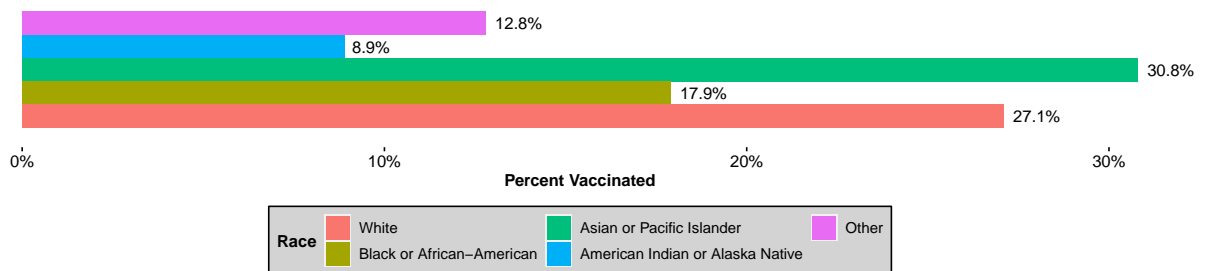
Influenza Vaccinations by Age Group



Influenza Vaccinations by Ethnicity

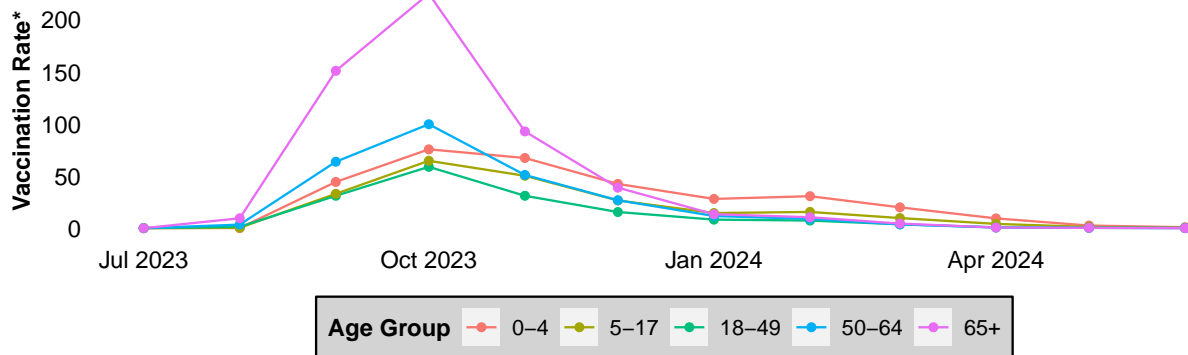


Influenza Vaccinations by Race



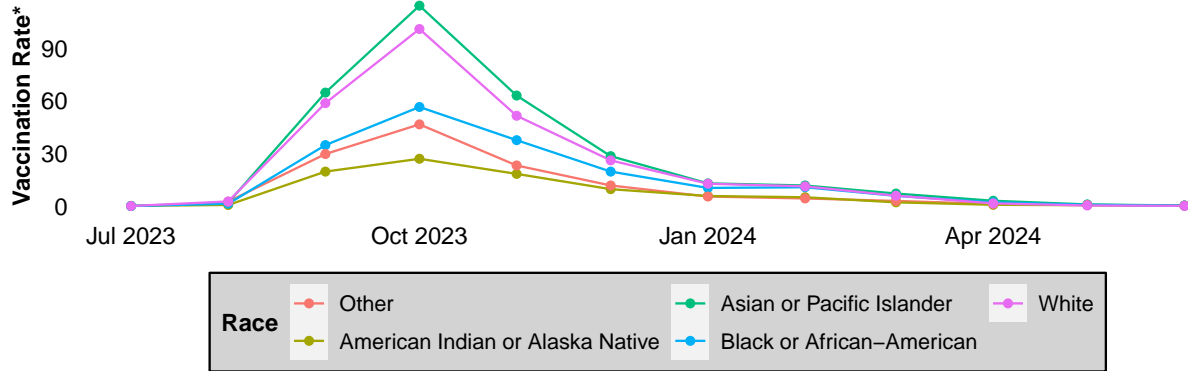
Vaccination Uptake Timelines

Influenza Vaccinations for Milwaukee Residents, 2023–24 Season by Month and Age Group



*Vaccination rates are per 1000 residents using 2021 ACS 5-year population estimates

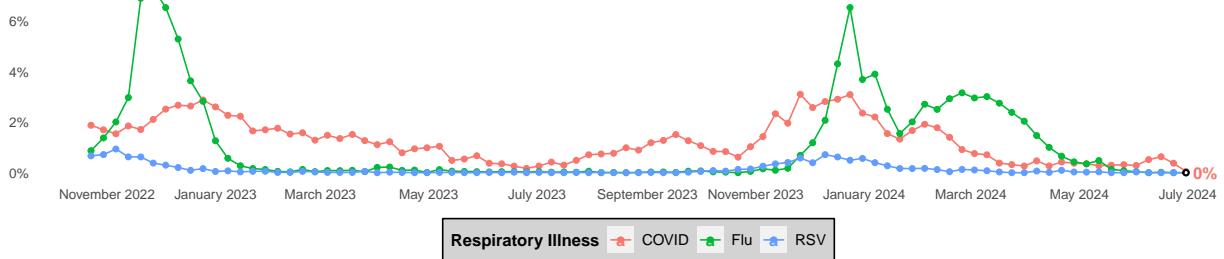
Influenza Vaccinations for Milwaukee Residents, 2023–24 Season by Month and Race



*Vaccination rates are per 1000 residents using 2021 ACS 5-year population estimates

Respiratory Illness Emergency Department Visits in Milwaukee County

Percent of All Emergency Room Visits Due to COVID, Flu, or RSV in Milwaukee County



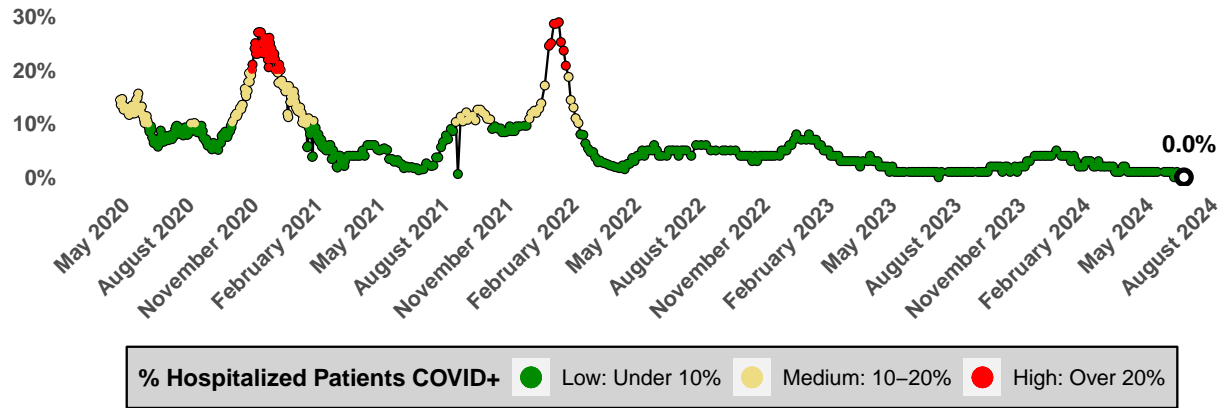
Please Note: Ascension recently was impacted by a cyberattack. As a result, Ascension facilities are not reporting visits into ESSENCE and we do not know when reporting will resume.

COVID-19 Activity

City of Milwaukee COVID-19 Vaccination Uptake

- As of July 3, 2024, 13% of city residents are up-to-date with their COVID-19 vaccinations.

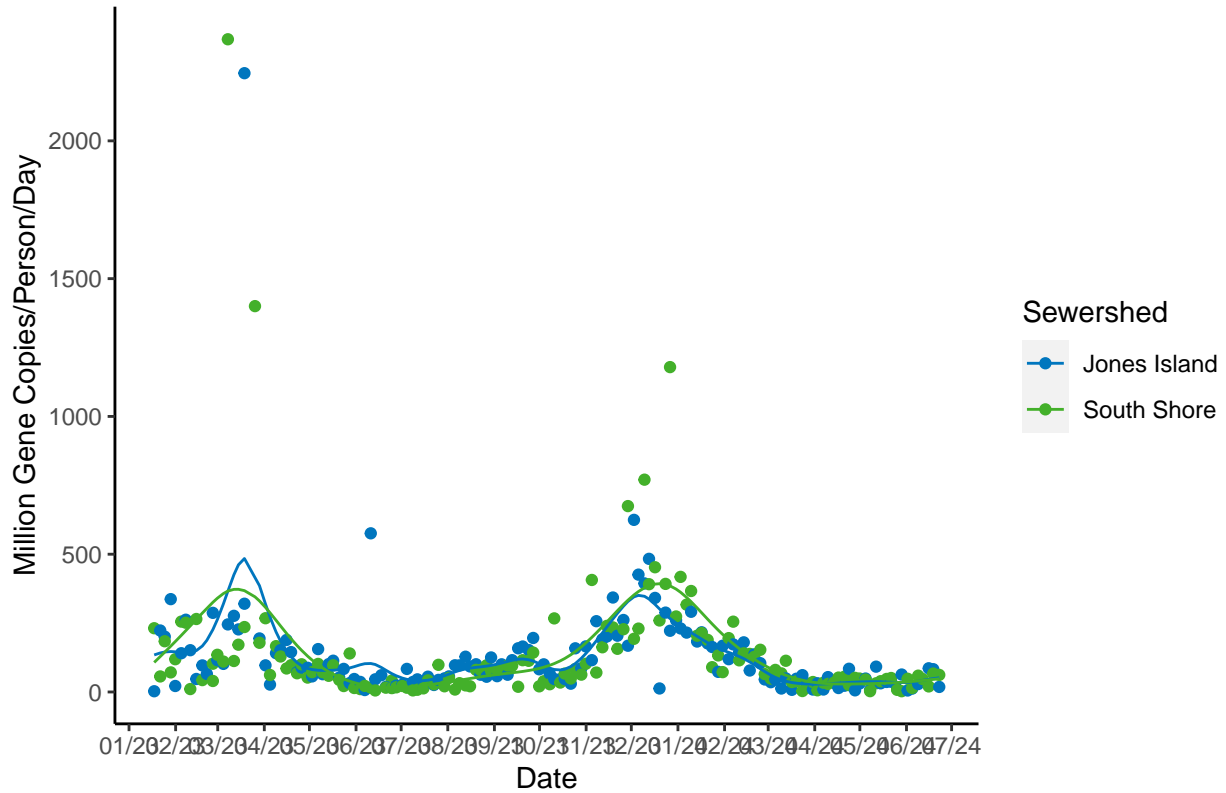
Hospitalized Patients that are COVID-19 Positive Timeline, Milwaukee County



Data Source: HERC Region 7
Last Update: 2024-06-27

SARS-CoV-2 Wastewater Surveillance

COVID-19 Trends in Milwaukee Sewersheds



Category: Compared to the last 6 months of data, the average of the last three most recent SARS-CoV-2 measurements are in the 60.42 percentile for Jones Island Sewershed and are in the 47.92 percentile for South Shore Sewershed. These measurements are *moderate* for Jones Island and *moderate* for South Shore.

Trajectory: Wastewater concentrations of SARS-CoV-2 *significantly increased* in the Jones Island or South Shore sewersheds.