

Milwaukee Respiratory Virus Surveillance Update

MMWR Week 21, Ending May 25, 2024

Contents

Overview	2
Statewide and Regional Influenza Activity	3
Respiratory Virus Laboratory Surveillance	3
Milwaukee County Influenza Activity	4
Influenza Testing Data	5
National Influenza Activity	5
Global Influenza Activity	6
Influenza Vaccination Uptake by City of Milwaukee Residents, 2023-2024 Season	7
Respiratory Illness Emergency Department Visits in Milwaukee County	8
COVID-19 Activity	9
SARS-CoV-2 Wastewater Surveillance	10

Overview

County

- There were 0 influenza-associated hospitalizations reported in Milwaukee County during the week ending on May 25, 2024. From October 1, 2023 through May 25, 2024, there have been 688 reported influenza-associated hospitalizations in Milwaukee County (525 City of Milwaukee residents).

State

- COVID-19, influenza, and RSV continued to circulate at low levels in Wisconsin.
- Influenza-like illness (ILI) activity remains low in Wisconsin.
- Rhino/enterovirus, human metapneumovirus and parainfluenza virus activities are elevated in Wisconsin.

National

- Seasonal influenza activity remains low nationally. This week no jurisdictions experienced moderate or high activity. Wisconsin had minimal activity.
- 3 influenza-associated pediatric deaths occurred during this week.
- Influenza A(H1N1)pdm09, A(H3N2) and B viruses were all co-circulating this week.

Influenza Vaccine Composition 2022-2023 Influenza Season All standard-dose flu shots will be quadrivalent (no trivalent standard-dose flu shots will be available this season). The quadrivalent vaccines for use in the 2023-2024 influenza season contain the following:

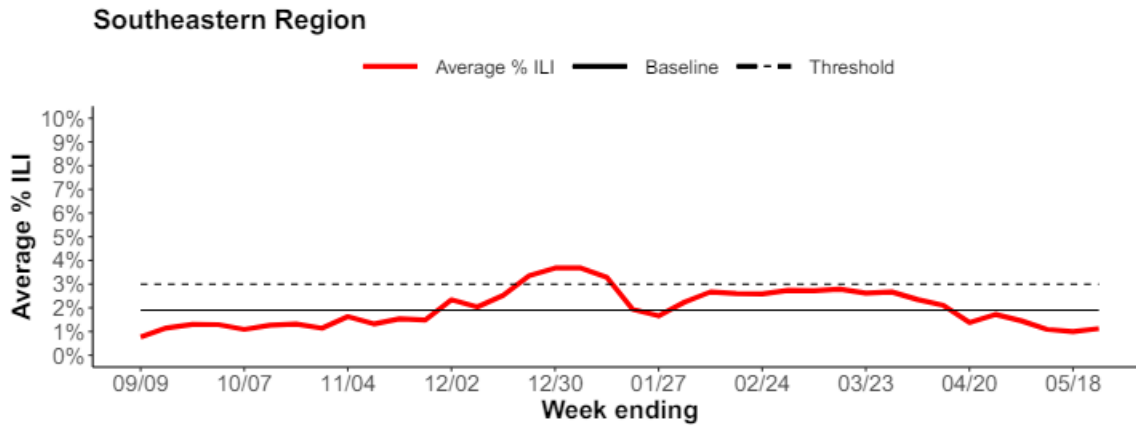
- an A/Victoria/4897/2022 (H1N1)pdm09-like virus;
- an A/Darwin/9/2021 (H3N2)-like virus;
- a B/Austria/1359417/2021 (B/Victoria lineage)-like virus; and
- a B/Phuket/3073/2013 (B/Yamagata lineage)-like virus

CDC Pediatric Data (Since Week 40)

2023-24 To Date: Total Deaths	2022-23 To Date: Total Deaths	Pediatric Deaths This Week	Notes on Deaths
172	179	3	Three influenza-associated pediatric deaths occurring during the 2023-2024 season were reported to CDC during Week 21, bringing the total pediatric deaths for this season to 172. One death was associated with an influenza A virus with no subtyping performed and occurred during Week 1 (the week ending January 6, 2024). Two deaths occurred during Week 10 (the week ending March 9, 2024); one was associated with an influenza A(H1N1)pdm09 virus and the other was associated with an influenza B virus with no lineage determined.

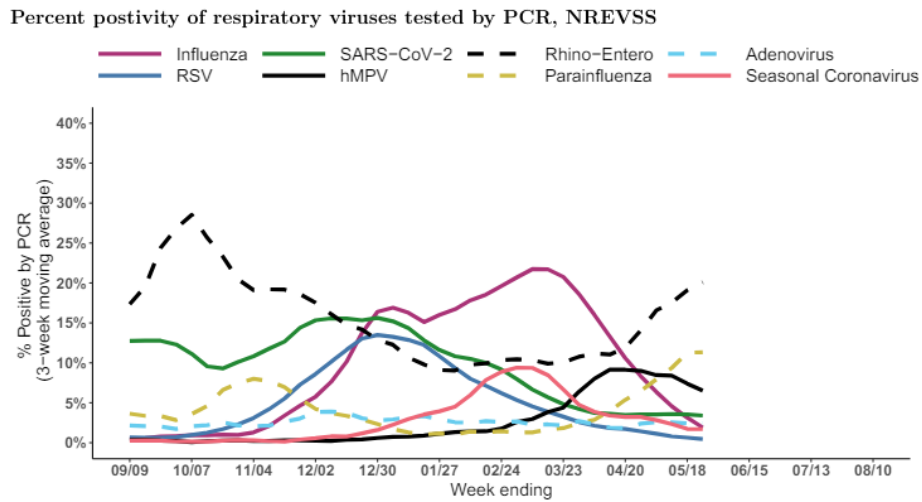
Statewide and Regional Influenza Activity

Influenza-like illness levels were below baseline statewide and below baseline in the southeastern region of the state.



Wisconsin Department of Health Services Respiratory Virus Surveillance Report, May 25, 2024

Respiratory Virus Laboratory Surveillance



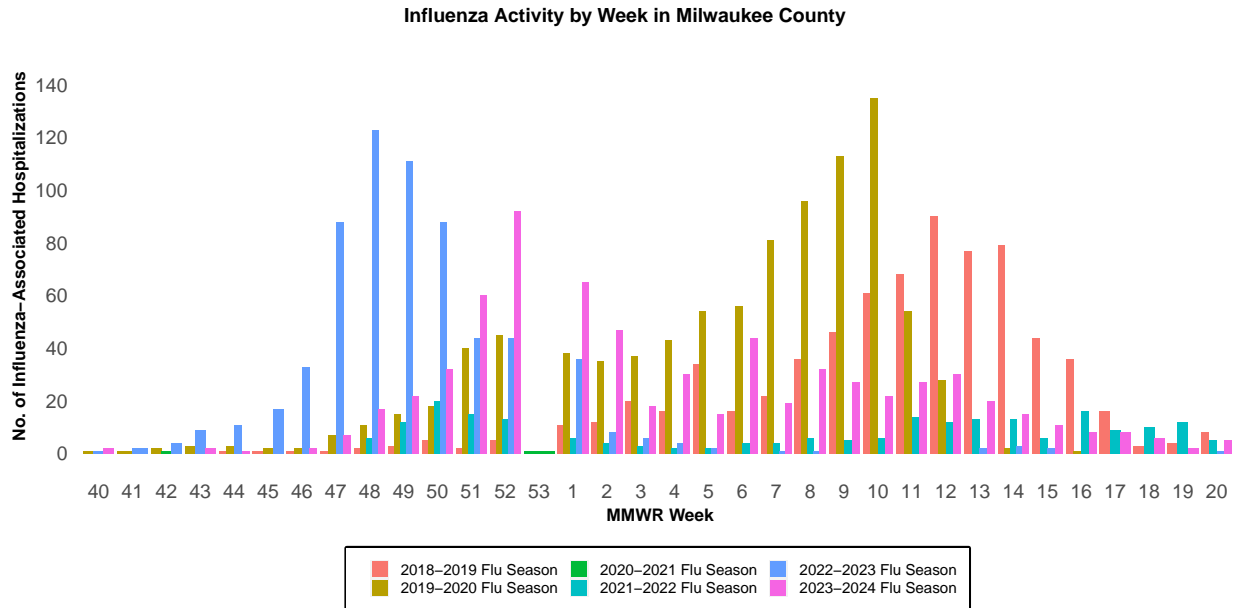
RSV = respiratory syncytial virus, hMPV = human metapneumovirus

Wisconsin Department of Health Services Respiratory Virus Surveillance Report, May 25, 2024

Milwaukee County Influenza Activity

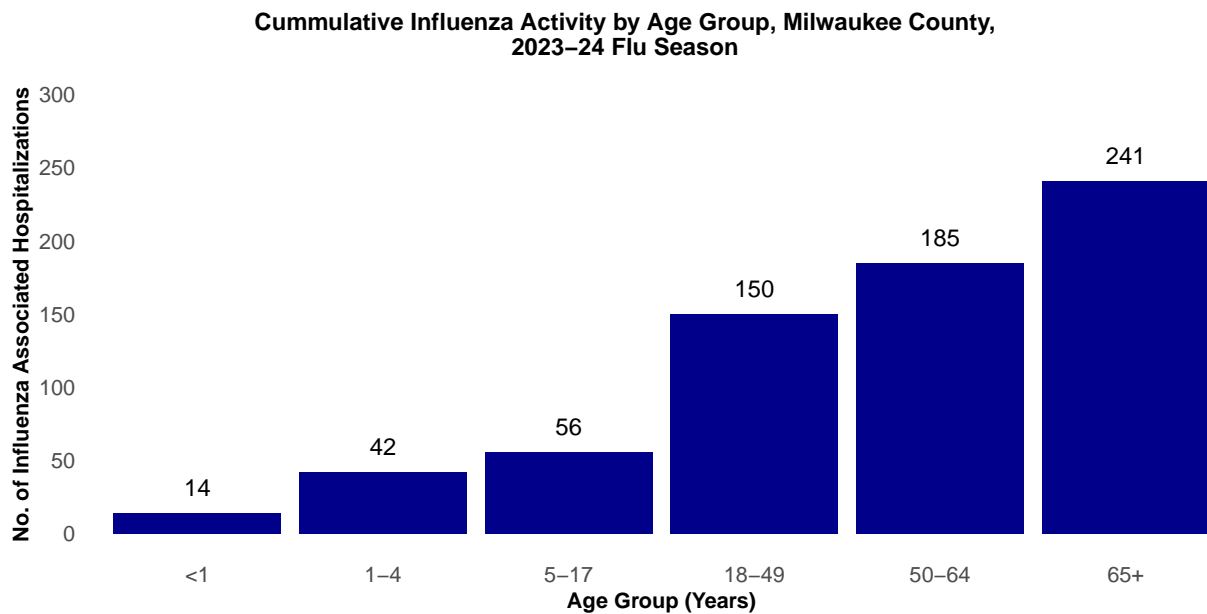
From October 1, 2023 through May 25, 2024 there have been 688 reported influenza-associated hospitalizations in Milwaukee County.

Milwaukee County Influenza-Associated Hospitalizations



*Flu activity was unusually low in the 2020-2021 flu season, despite high levels of testing. COVID-19 mitigation measures such as wearing face masks, social distancing, staying home, and school closures, in addition to flu vaccination, likely contributed to the low flu activity during this season.

Milwaukee County Influenza-Associated Hospitalizations by Age Group MMWR Week 40, 2023 through Week 21, 2023



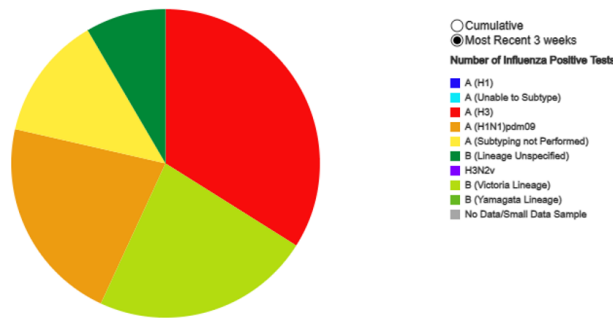
Influenza Testing Data

Public Health Laboratory Influenza Testing Data To-Date (Since Week 40)

Lab	Number Tested to date	Number Positive to date	Most Recent Week Percent Positive	Predominant A Subtype and Strain	Predominant B Strain	Predominant Type (A or B)
CDC	3,298,461	345,283	609/35,297 (1.7%)	H3N2	Victoria	A
WSLH	-	-	64/6,158 (1%)	Unknown	Unknown	B
MHDL	309	77	0/5 (0%)	N/A	N/A	B

National Influenza Testing Data, CDC FluView

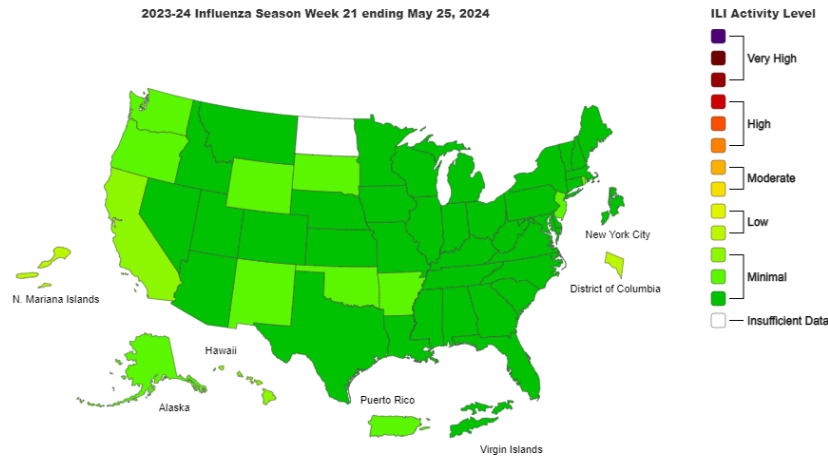
Influenza Positive Tests Reported to CDC by Public Health Laboratories, National Summary, 2023-24 Season, week ending May 25, 2024.
Reported by: U.S. WHONREVS Collaborating Laboratories and ILINet



<http://gis.cdc.gov/grasp/fluview/fluportaldashboard.html> accessed 05/31/2024

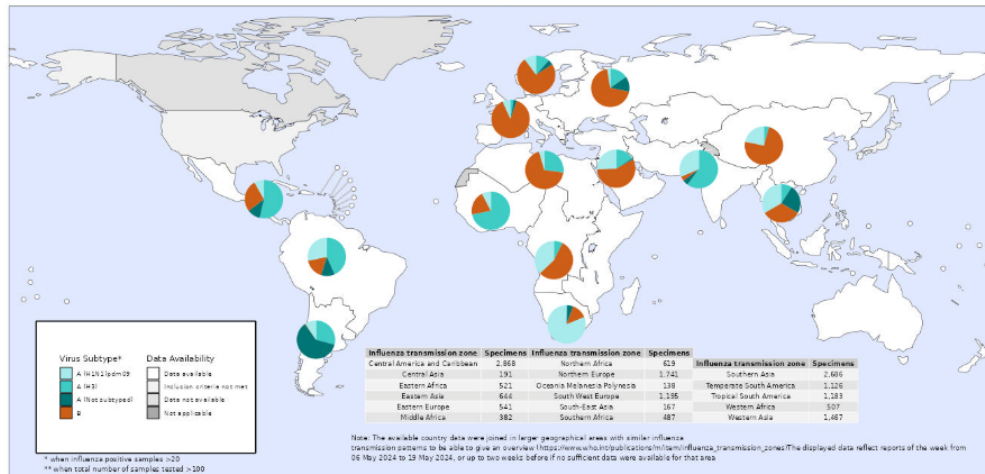
National Influenza Activity

Outpatient Respiratory Illness Activity Map, CDC FluView



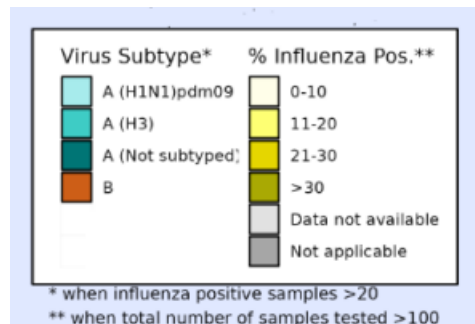
<https://www.cdc.gov/flu/weekly/index.htm#MS2> accessed 05/31/2024

Global Influenza Activity



Sentinel specimens testing positive for influenza, by virus type and subtype

<https://www.who.int/teams/global-influenza-programme/surveillance-and-monitoring/influenza-updates>, accessed 05/31/2024

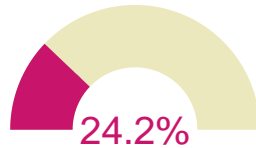


- In the Northern hemisphere, influenza activity was generally low at interepidemic levels in most countries. Elevated activity continued to be reported in countries in Central America and the Caribbean, due primarily to influenza A(H3N2) with influenza B viruses also detected. Elevated activity was reported in countries in South Asia with primarily influenza A(H3N2) viruses with A(H1N1)pdm09 viruses also detected. In the Southern hemisphere, countries in South America continued to report elevated influenza activity, with influenza A(H1N1)pdm09 and A(H3N2) viruses detected. In South Africa, activity was elevated and increased relative to prior weeks, due primarily to influenza A(H1N1)pdm09 viruses.
- SARS-CoV-2 activity, as reported from sentinel surveillance in 59 countries/areas/territories that met inclusion criteria, was low overall. Some countries in Central America, Western Asia, South Asia, South East Asia, and Oceania reported elevated activity. Small increases in activity were reported in Oceania and South West Europe.

Influenza Vaccination Uptake by City of Milwaukee Residents, 2023-2024 Season

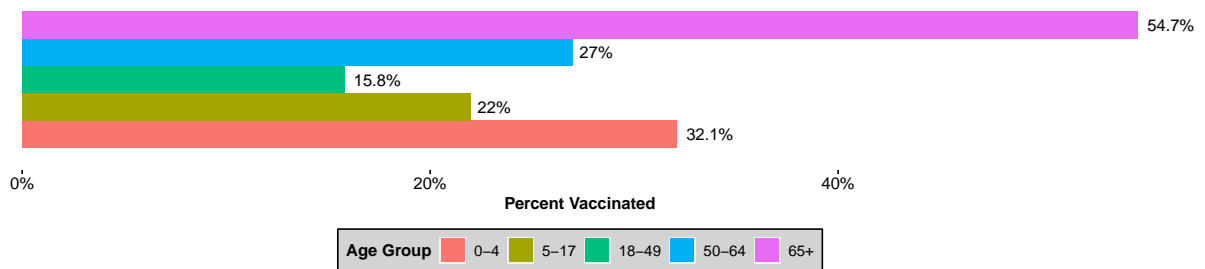
Overview

- City of Milwaukee residents who have received at least one dose of flu vaccinations as of May 29, 2024:

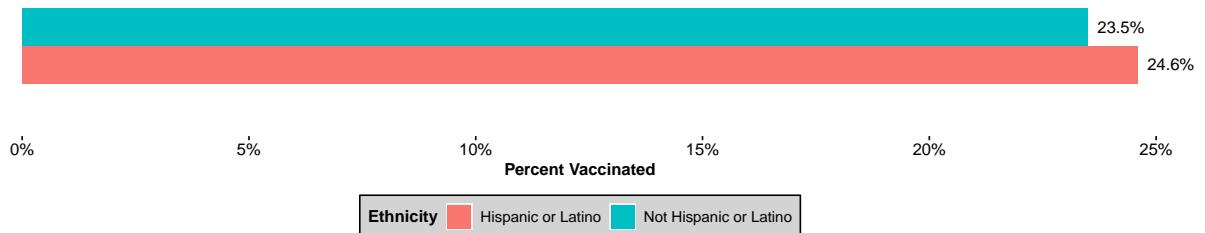


Influenza Vaccination Coverage for 2023-2024 Season by Demographics

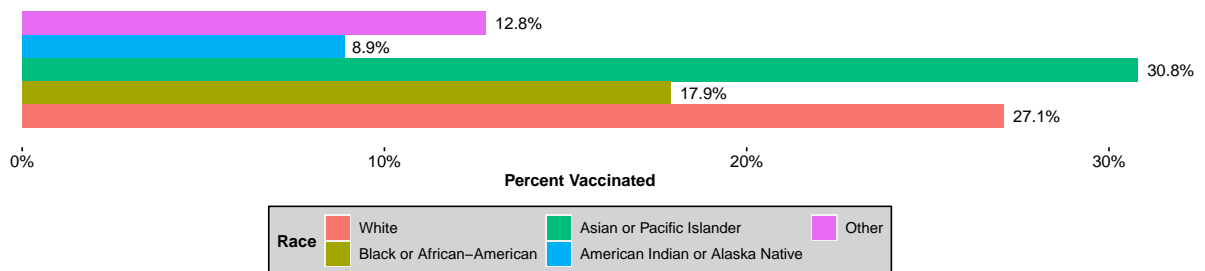
Influenza Vaccinations by Age Group



Influenza Vaccinations by Ethnicity

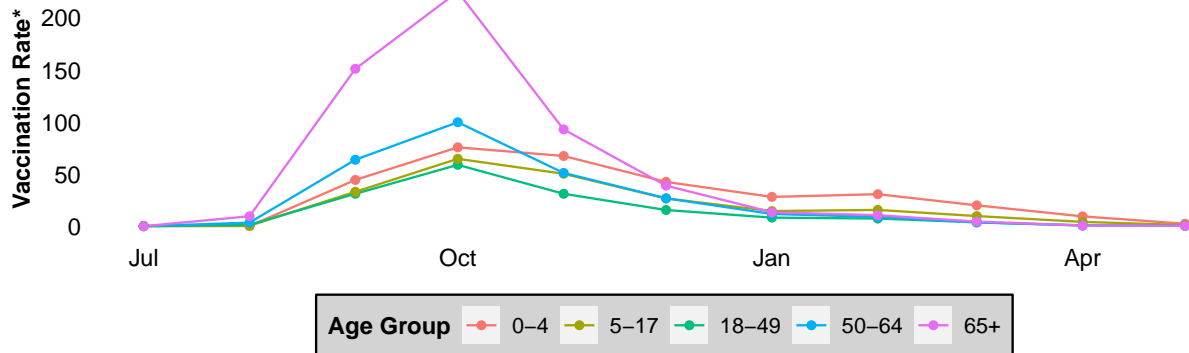


Influenza Vaccinations by Race



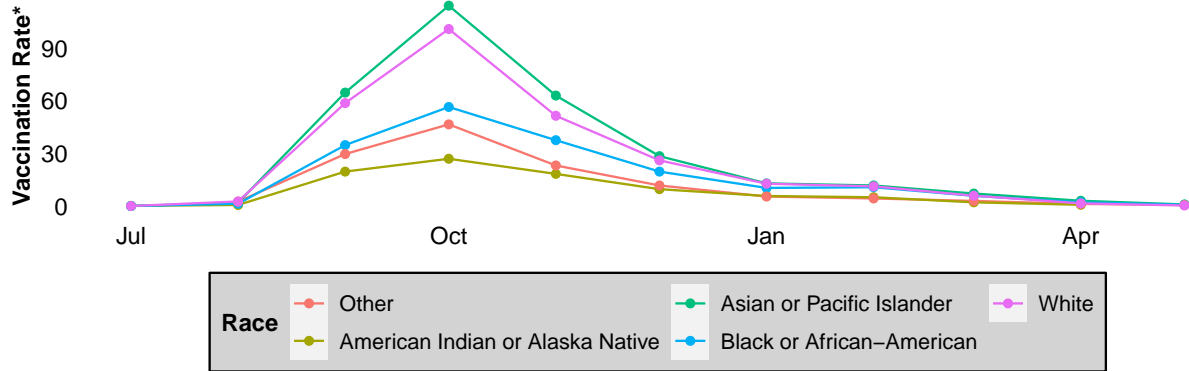
Vaccination Uptake Timelines

Influenza Vaccinations for Milwaukee Residents, 2023–24 Season by Month and Age Group



*Vaccination rates are per 1000 residents using 2021 ACS 5-year population estimates

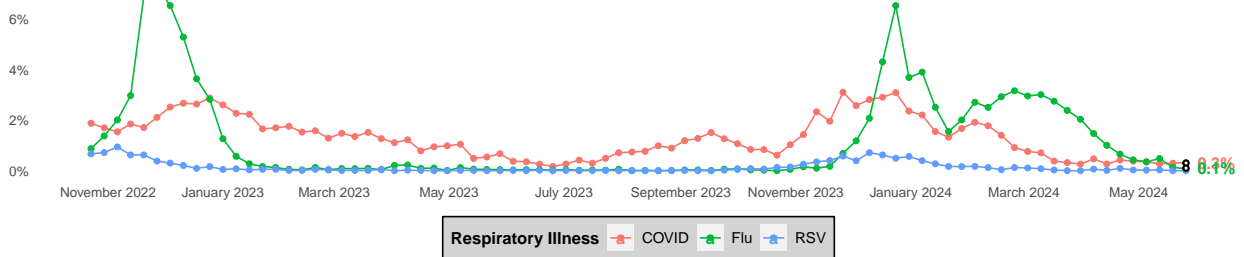
Influenza Vaccinations for Milwaukee Residents, 2023–24 Season by Month and Race



*Vaccination rates are per 1000 residents using 2021 ACS 5-year population estimates

Respiratory Illness Emergency Department Visits in Milwaukee County

Percent of All Emergency Room Visits Due to COVID, Flu, or RSV in Milwaukee County



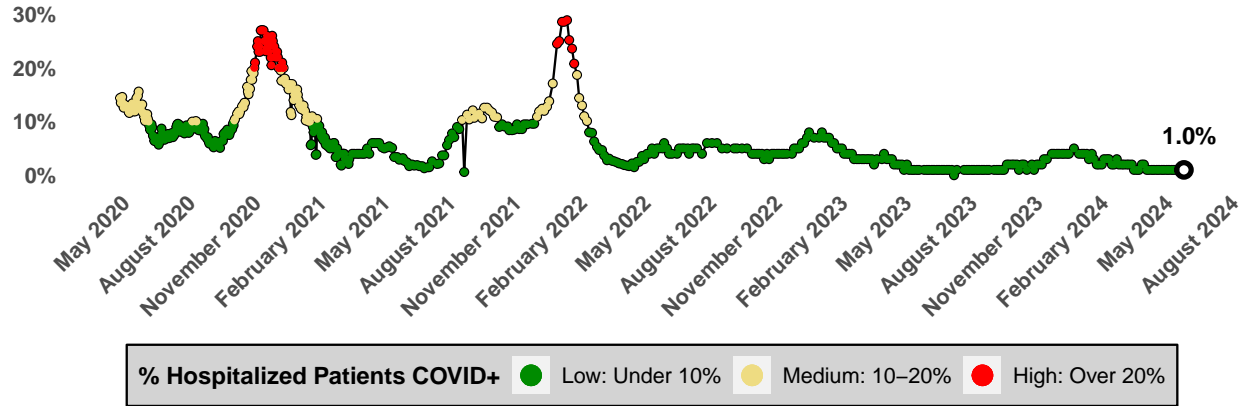
Please Note: Ascension recently was impacted by a cyberattack. As a result, Ascension facilities are not reporting visits into ESSENCE and we do not know when reporting will resume.

COVID-19 Activity

City of Milwaukee COVID-19 Vaccination Uptake

- As of May 29, 2024, 12.8% of city residents are up-to-date with their COVID-19 vaccinations.

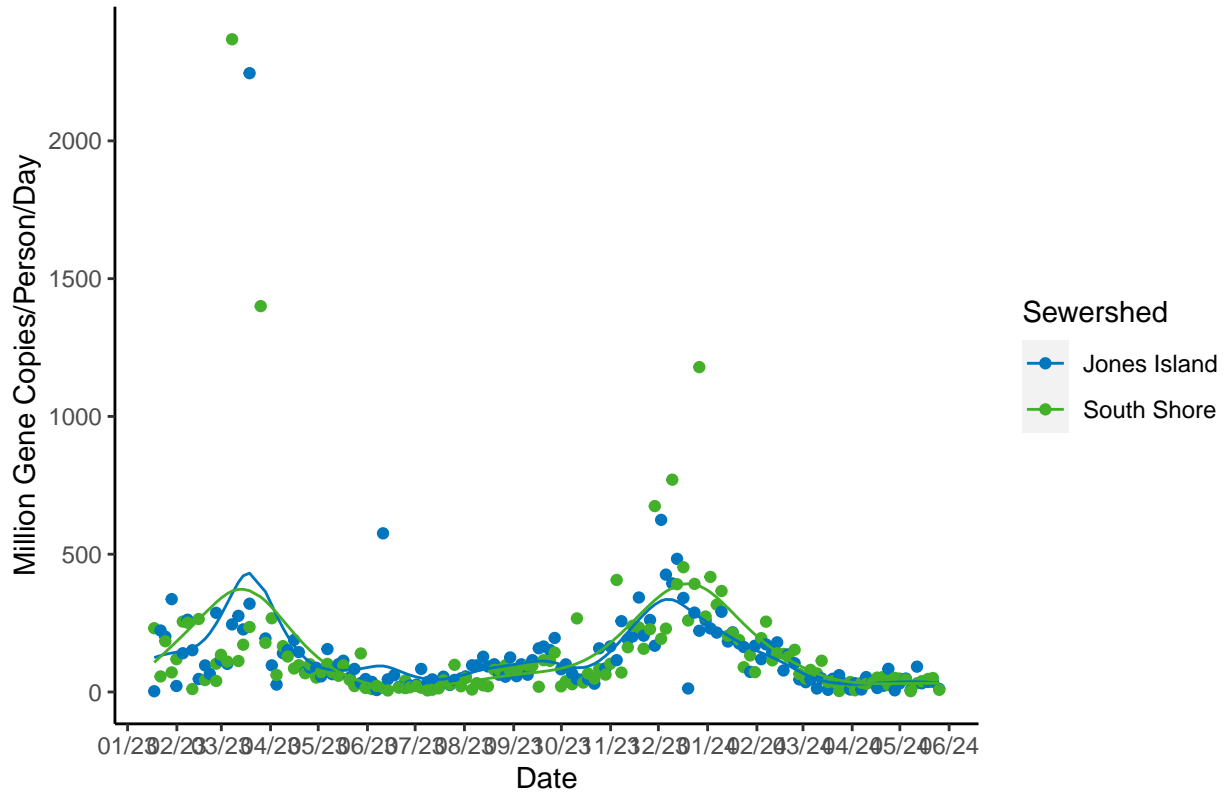
Hospitalized Patients that are COVID-19 Positive Timeline, Milwaukee County



Data Source: HERC Region 7
Last Update: 2024-05-30

SARS-CoV-2 Wastewater Surveillance

COVID-19 Trends in Milwaukee Sewersheds



Category: Compared to the last 6 months of data, the average of the last three most recent SARS-CoV-2 measurements are in the 19.61 percentile for Jones Island Sewershed and are in the 31.37 percentile for South Shore Sewershed. These measurements are *low* for Jones Island and *low* for South Shore.

Trajectory: Wastewater concentrations of SARS-CoV-2 *did not significantly increase* in the Jones Island or South Shore sewersheds.