

# Milwaukee Respiratory Virus Surveillance Update

## MMWR Week 20, Ending May 18, 2024

### Contents

Overview . . . . .	2
Statewide and Regional Influenza Activity . . . . .	3
Respiratory Virus Laboratory Surveillance . . . . .	3
Milwaukee County Influenza Activity . . . . .	4
Influenza Testing Data . . . . .	5
National Influenza Activity . . . . .	5
Global Influenza Activity . . . . .	6
Influenza Vaccination Uptake by City of Milwaukee Residents, 2023-2024 Season . . . . .	7
Respiratory Illness Emergency Department Visits in Milwaukee County . . . . .	8
COVID-19 Activity . . . . .	9
SARS-CoV-2 Wastewater Surveillance . . . . .	10

## Overview

### County

- There were 3 influenza-associated hospitalizations reported in Milwaukee County during the week ending on May 18, 2024. From October 1, 2023 through May 18, 2024, there have been 686 reported influenza-associated hospitalizations in Milwaukee County (523 City of Milwaukee residents).

### State

- COVID-19, influenza, and RSV continued to circulate at low levels in Wisconsin.
- Influenza-like illness (ILI) activity remains low in Wisconsin.
- Rhino/enterovirus, human metapneumovirus and parainfluenza virus activities are elevated in Wisconsin.

### National

- Seasonal influenza activity is low nationally. This week 2 jurisdictions experienced moderate or high activity. Wisconsin had minimal activity.
- 2 influenza-associated pediatric deaths occurred during this week.
- Influenza A(H1N1)pdm09, A(H3N2) and B viruses were all co-circulating this week.

**Influenza Vaccine Composition 2022-2023 Influenza Season** All standard-dose flu shots will be quadrivalent (no trivalent standard-dose flu shots will be available this season). The quadrivalent vaccines for use in the 2023-2024 influenza season contain the following:

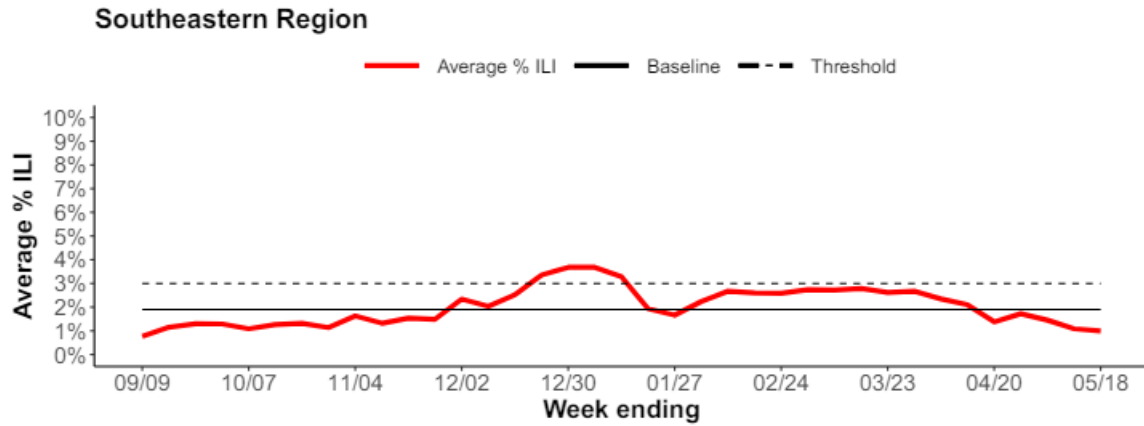
- an A/Victoria/4897/2022 (H1N1)pdm09-like virus;
- an A/Darwin/9/2021 (H3N2)-like virus;
- a B/Austria/1359417/2021 (B/Victoria lineage)-like virus; and
- a B/Phuket/3073/2013 (B/Yamagata lineage)-like virus

### CDC Pediatric Data (Since Week 40)

2023-24 To Date: Total Deaths	2022-23 To Date: Total Deaths	Pediatric Deaths This Week	Notes on Deaths
169	178	2	Two influenza-associated pediatric deaths occurring during the 2023-2024 season were reported to CDC during Week 20, bringing the total pediatric deaths for this season to 169. One death was associated with an influenza A virus with no subtyping performed and occurred during Week 7 (the week ending February 17, 2024). The other death was associated with an influenza A(H3) virus and occurred during Week 17 (the week ending April 27, 2024).

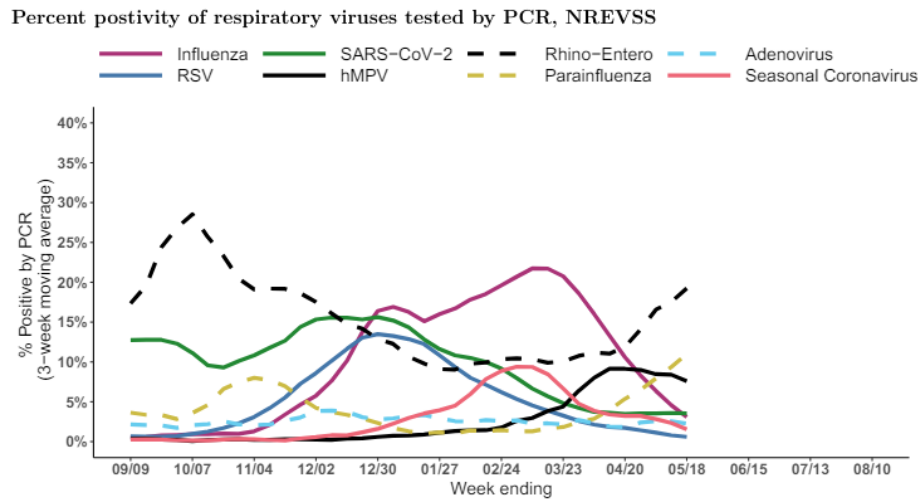
## Statewide and Regional Influenza Activity

Influenza-like illness levels were below baseline statewide and below baseline in the southeastern region of the state.



Wisconsin Department of Health Services Respiratory Virus Surveillance Report, May 18, 2024

## Respiratory Virus Laboratory Surveillance



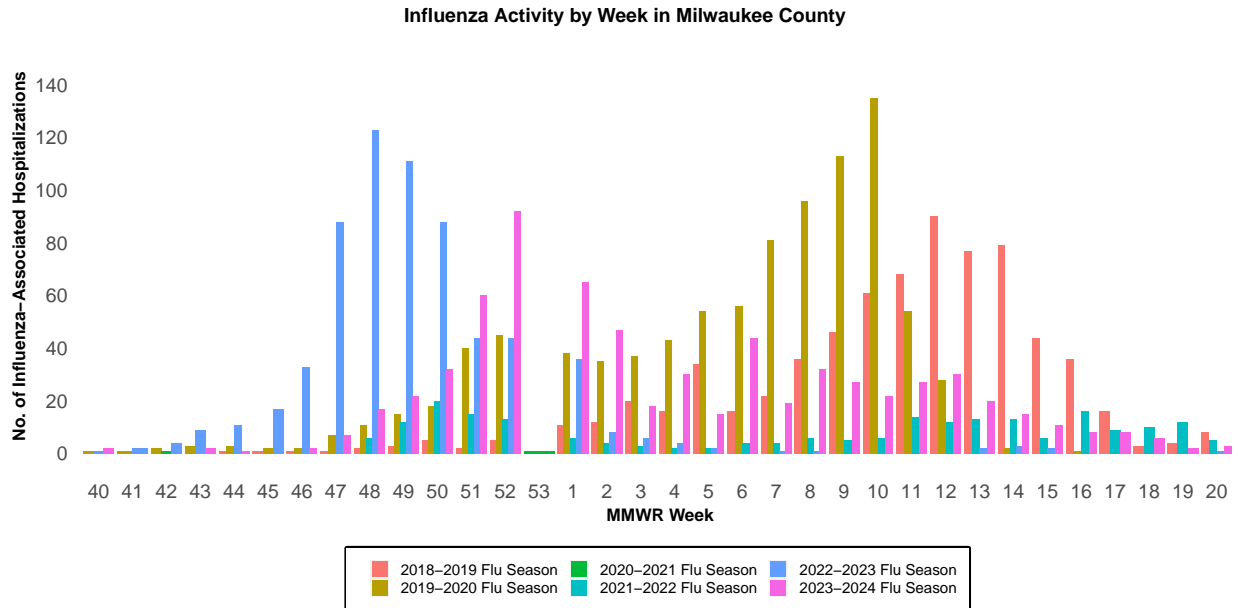
RSV = respiratory syncytial virus, hMPV = human metapneumovirus

Wisconsin Department of Health Services Respiratory Virus Surveillance Report, May 18, 2024

## Milwaukee County Influenza Activity

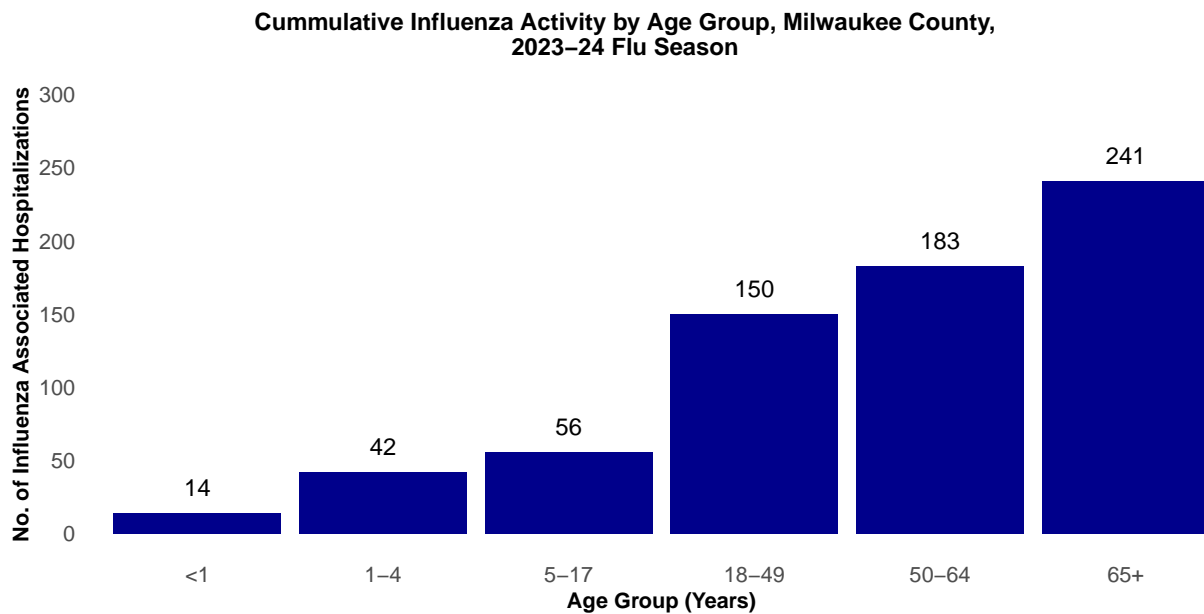
From October 1, 2023 through May 18, 2024 there have been 686 reported influenza-associated hospitalizations in Milwaukee County.

### Milwaukee County Influenza-Associated Hospitalizations



\*Flu activity was unusually low in the 2020-2021 flu season, despite high levels of testing. COVID-19 mitigation measures such as wearing face masks, social distancing, staying home, and school closures, in addition to flu vaccination, likely contributed to the low flu activity during this season.

### Milwaukee County Influenza-Associated Hospitalizations by Age Group MMWR Week 40, 2023 through Week 20, 2023



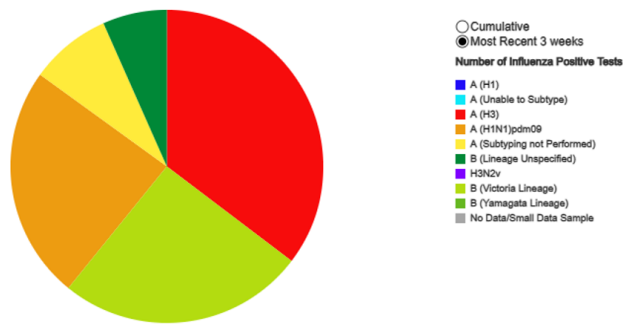
## Influenza Testing Data

### Public Health Laboratory Influenza Testing Data To-Date (Since Week 40)

Lab	Number Tested to date	Number Positive to date	Most Recent Week Percent Positive	Predominant A Subtype and Strain	Predominant B Strain	Predominant Type (A or B)
CDC	3,234,435	344,458	731/35,946 (2.0%)	H3N2	Victoria	A
WSLH	-	-	96/5,037 (1.9%)	Unknown	Unknown	B
MHDL	309	77	0/5 (0%)	N/A	N/A	B

### National Influenza Testing Data, CDC FluView

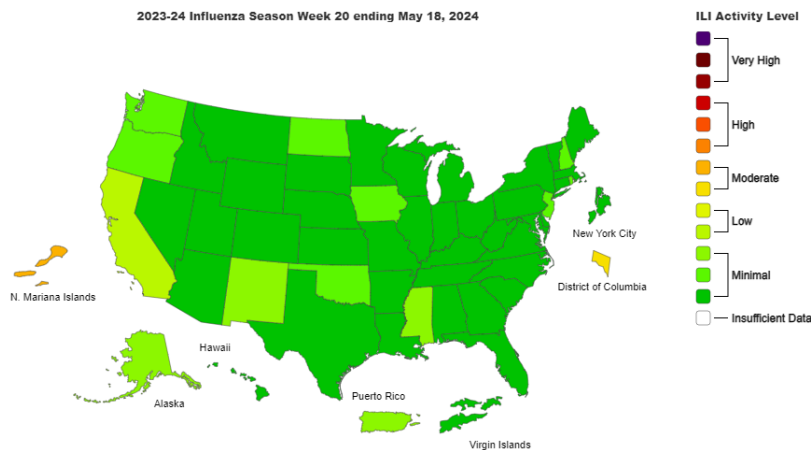
Influenza Positive Tests Reported to CDC by Public Health Laboratories, National Summary, 2023-24 Season, week ending May 18, 2024  
Reported by: U.S. WHOINREVSS Collaborating Laboratories and ILINet



<http://gis.cdc.gov/grasp/fluview/fluportaldashboard.html> accessed 05/24/2024

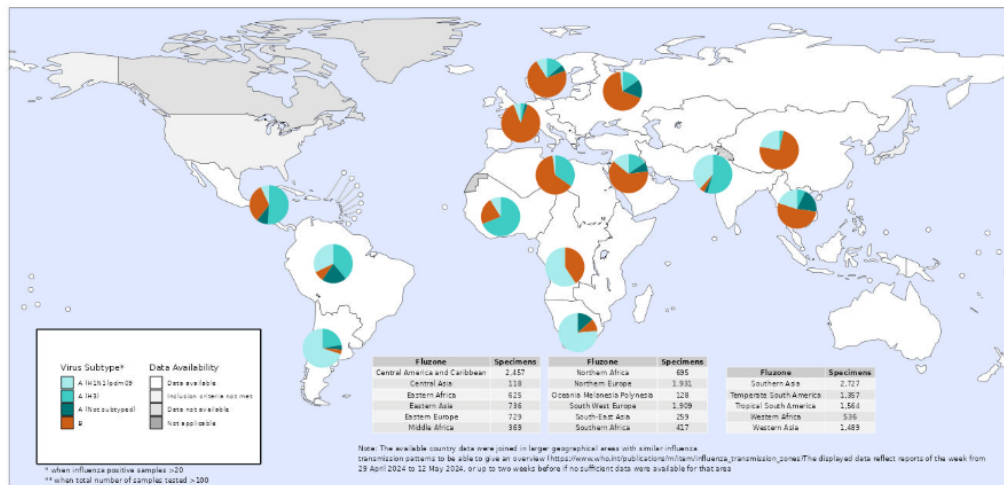
## National Influenza Activity

### Outpatient Respiratory Illness Activity Map, CDC FluView



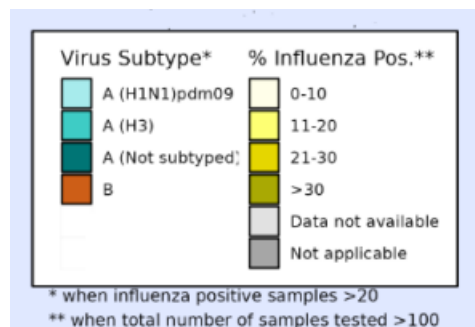
<https://www.cdc.gov/flu/weekly/index.htm#MS2> accessed 05/24/2024

## Global Influenza Activity



## Sentinel specimens testing positive for influenza, by virus type and subtype

<https://www.who.int/teams/global-influenza-programme/surveillance-and-monitoring/influenza-updates>, accessed 05/24/2024

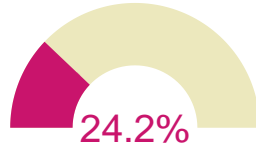


- In the Northern Hemisphere, influenza activity was stable or declined in most countries. Elevated activity continued to be reported in Central America and the Caribbean, due primarily to influenza A(H3N2) viruses, and in some parts of Eastern Europe and Western Asia, due primarily to influenza B viruses. In the Southern hemisphere, several countries in South America reported elevated influenza activity, with mainly influenza A viruses detected (A(H1N1)pdm09 and A(H3N2) viruses have been co-circulating). In Southern Africa, activity was elevated and increased relative to prior weeks, due primarily to influenza A(H1N1)pdm09 viruses.
- SARS-CoV-2 activity, as reported from sentinel surveillance in 59 countries/areas/territories that met inclusion criteria, was low overall, but elevated in some countries in South West Europe, Middle Africa, Northern Africa, Western Asia, South Asia, and South East Asia. Activity was stable in most countries, with small increases reported in South West Europe, Middle Africa, Eastern Africa, and Western Asia.

# Influenza Vaccination Uptake by City of Milwaukee Residents, 2023-2024 Season

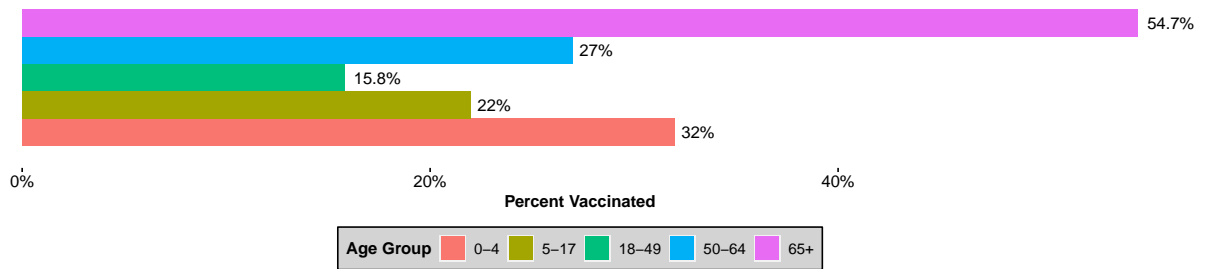
## Overview

- City of Milwaukee residents who have received at least one dose of flu vaccinations as of May 23, 2024:

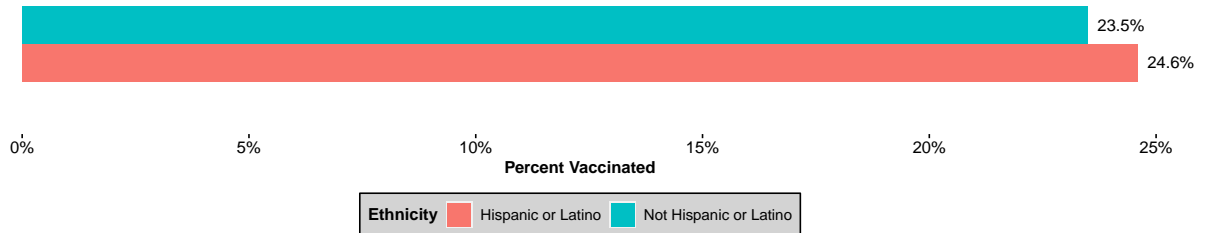


## Influenza Vaccination Coverage for 2023-2024 Season by Demographics

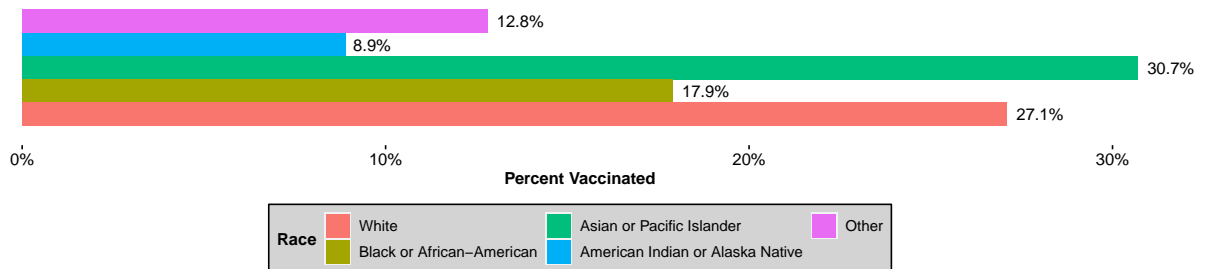
### Influenza Vaccinations by Age Group



### Influenza Vaccinations by Ethnicity

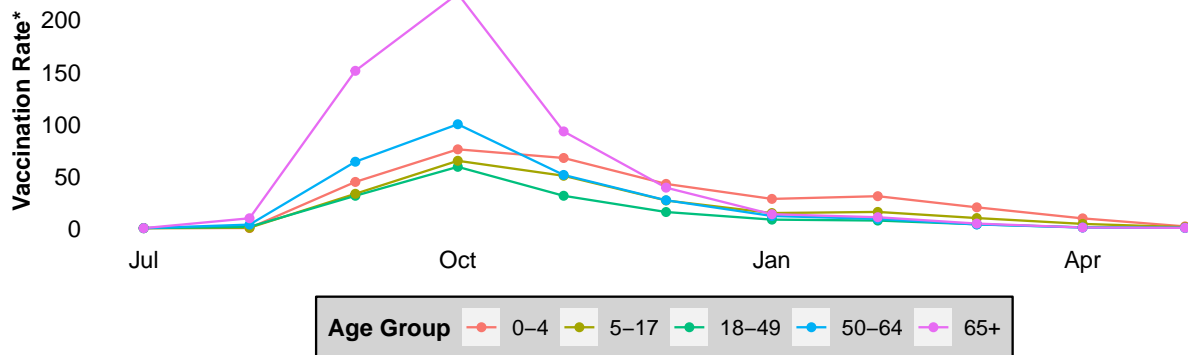


### Influenza Vaccinations by Race



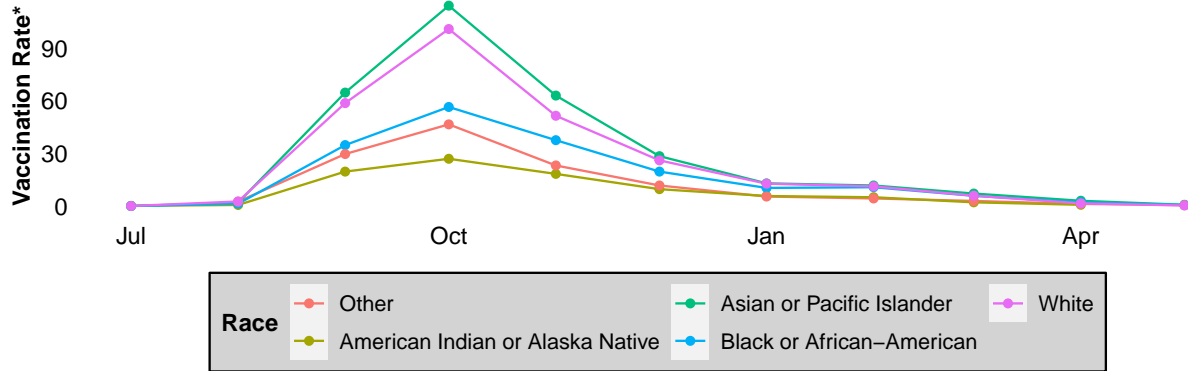
## Vaccination Uptake Timelines

### Influenza Vaccinations for Milwaukee Residents, 2023–24 Season by Month and Age Group



\*Vaccination rates are per 1000 residents using 2021 ACS 5-year population estimates

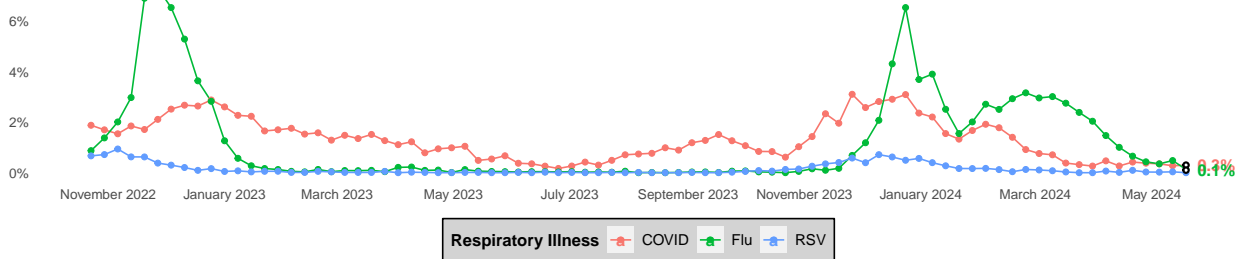
### Influenza Vaccinations for Milwaukee Residents, 2023–24 Season by Month and Race



\*Vaccination rates are per 1000 residents using 2021 ACS 5-year population estimates

## Respiratory Illness Emergency Department Visits in Milwaukee County

### Percent of All Emergency Room Visits Due to COVID, Flu, or RSV in Milwaukee County



Please Note: Ascension recently was impacted by a cyberattack. As a result, Ascension facilities are not reporting visits into ESSENCE and we do not know when reporting will resume.

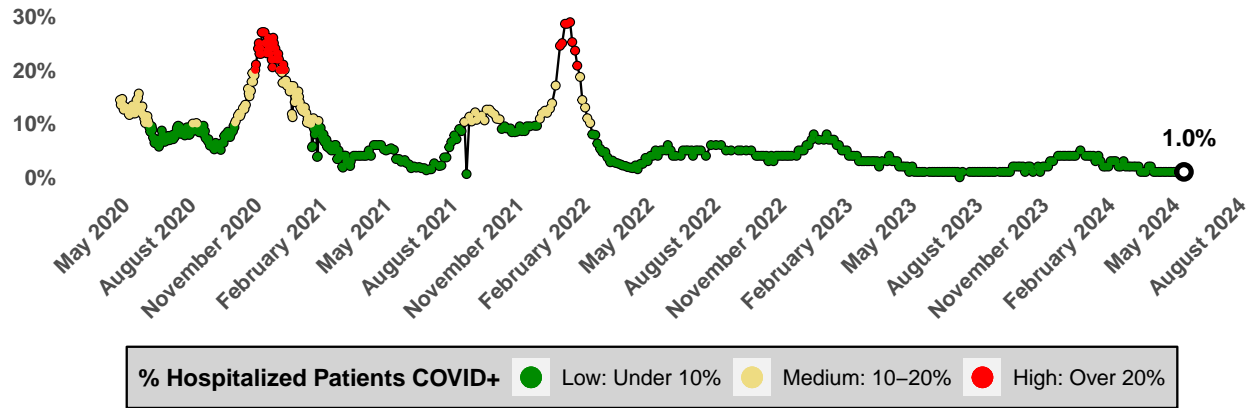


## COVID-19 Activity

### City of Milwaukee COVID-19 Vaccination Uptake

- As of May 22, 2024, 12.8% of city residents are up-to-date with their COVID-19 vaccinations.

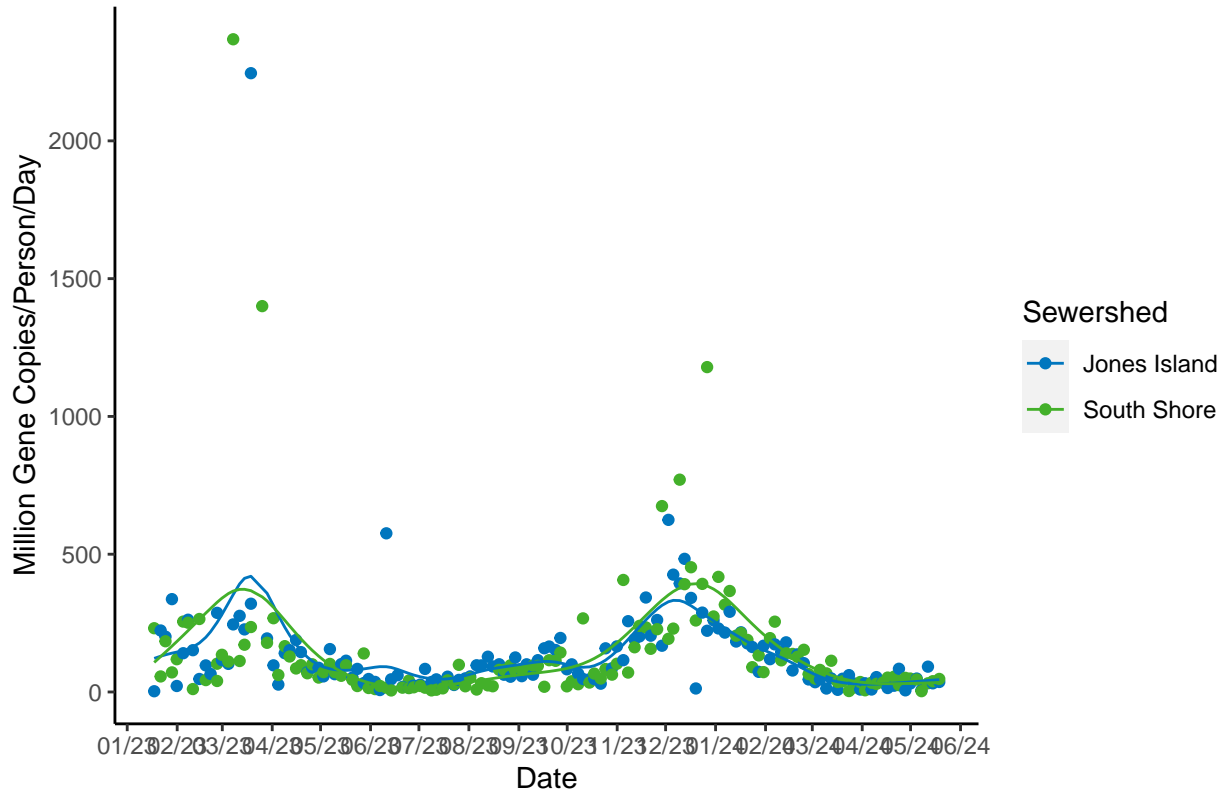
### Hospitalized Patients that are COVID-19 Positive Timeline, Milwaukee County



Data Source: HERC Region 7  
Last Update: 2024-05-20

## SARS-CoV-2 Wastewater Surveillance

### COVID-19 Trends in Milwaukee Sewersheds



**Category:** Compared to the last 6 months of data, the average of the last three most recent SARS-CoV-2 measurements are in the 17.65 percentile for Jones Island Sewershed and are in the 29.41 percentile for South Shore Sewershed. These measurements are *low* for Jones Island and *low* for South Shore.

**Trajectory:** Wastewater concentrations of SARS-CoV-2 *significantly increased* in the Jones Island or South Shore sewersheds.