

Milwaukee Respiratory Virus Surveillance Update

MMWR Week 18, Ending May 3, 2025

Contents

| | |
|--|---|
| Respiratory Illnesses In the News | 2 |
| Overview | 2 |
| Statewide and Regional Influenza Activity | 3 |
| Respiratory Virus Laboratory Surveillance | 3 |
| Milwaukee County Influenza Activity | 4 |
| Influenza Testing Data | 5 |
| National Influenza Activity | 5 |
| Respiratory Illness Emergency Department Visits in Milwaukee County | 6 |
| Respiratory Illness Immunization Rates of Milwaukee County Residents, 2024-2025 Season | 6 |
| COVID-19 Activity | 7 |
| Wastewater Disease Surveillance - Respiratory Illnesses | 7 |

Respiratory Illnesses In the News

Moderna's combo COVID and flu mRNA shot outperforms current vaccines in large trials: <https://www.nbcnews.com/health/health-news/modernas-combo-covid-flu-mrna-shot-outperforms-current-vaccines-large-rcna205242>

A \$500 Million Bet on Old Vaccine Technology Puzzles Scientists: <https://kffhealthnews.org/news/article/trump-hhs-rfk-flu-vaccine-nih-grant-taubenberger/>

US infant mortality dropped in 2024. Experts partly credit RSV shots: <https://abcnews.go.com/US/wireStory/us-infant-mortality-dropped-2024-experts-partly-credit-121613826>

Overview

County

- There were 4 influenza-associated hospitalizations reported in Milwaukee County during the week ending on May 3, 2025. From September 29, 2024 through May 3, 2025, there have been 1193 reported influenza-associated hospitalizations in Milwaukee County (809 City of Milwaukee residents).

State

- Statewide influenza-like illness activity is low.
- Influenza and RSV activity levels are low based on emergency department, laboratory testing, and wastewater data. COVID-19 activity is minimal.
- Influenza B makes up almost all of influenza currently circulating based on laboratory detections.

National

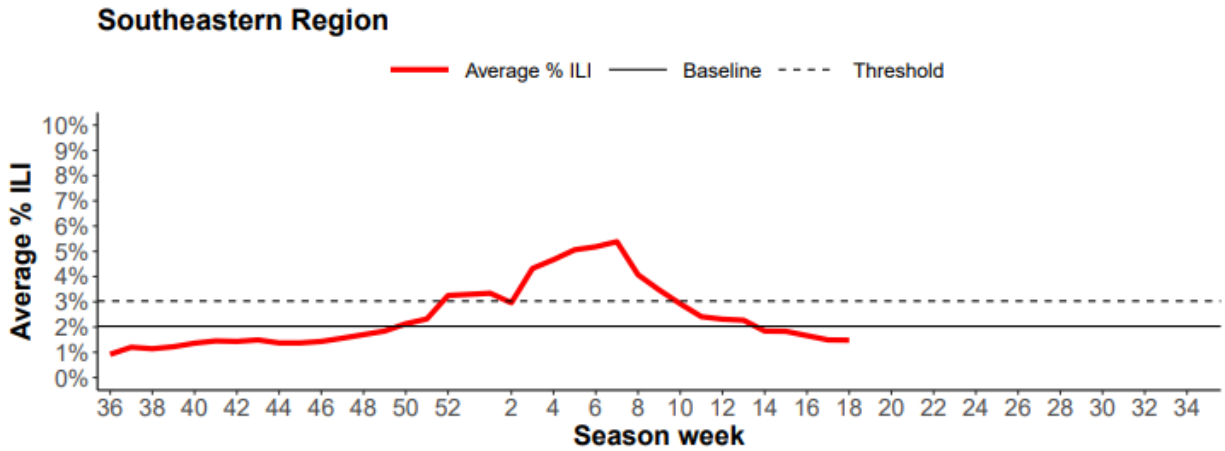
- Seasonal influenza activity is low and declining. This week 0 jurisdiction experienced moderate influenza activity and 0 jurisdictions experienced high or very high activity.
- 10 influenza-associated pediatric deaths occurred during this week.
- Influenza A(H1N1)pdm09, A(H3N2), and B were the predominant viruses this week.

CDC Pediatric Data (Since Week 40)

| 2024-25 To Date: Total Deaths | 2023-24 To Date: Total Deaths | Pediatric Deaths This Week | Notes on Deaths |
|--|--|----------------------------------|---|
| 226 | 207 | 10 | Ten influenza-associated pediatric deaths occurring during the 2024-2025 season were reported to CDC during Week 18. The deaths occurred between weeks 3 (the week ending January 18, 2025) and 15 (the week ending April 12, 2025). Seven deaths were associated with influenza A viruses. Two of the influenza A viruses had subtyping performed and both were A(H3N2) viruses. Three deaths were associated with influenza B viruses with no lineage determined. A total of 226 influenza-associated pediatric deaths occurring during the 2024-2025 season have been reported to CDC. Among children who were eligible for influenza vaccination and with known vaccine status, 90% of reported pediatric deaths have occurred in children who were not fully vaccinated against influenza. |

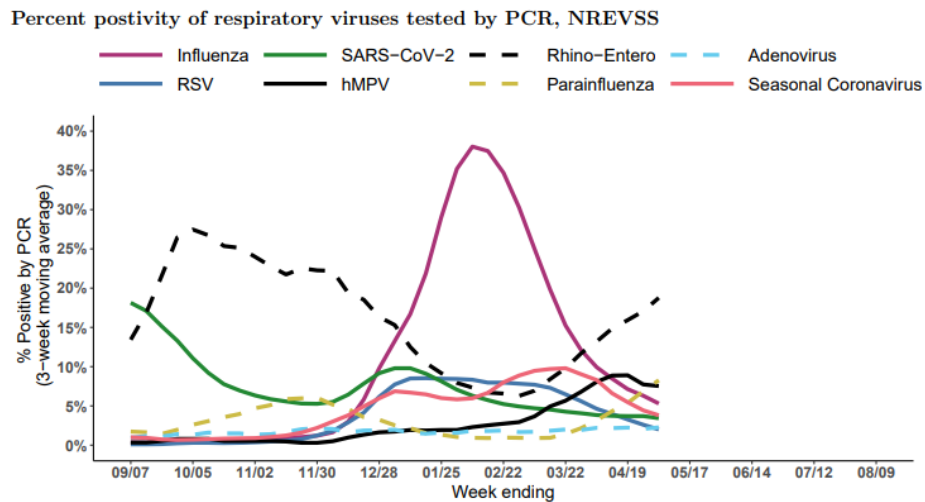
Statewide and Regional Influenza Activity

Influenza-like illness levels were below baseline statewide and below baseline in the southeastern region of the state.



Wisconsin Department of Health Services Respiratory Virus Surveillance Report, May 3, 2025

Respiratory Virus Laboratory Surveillance



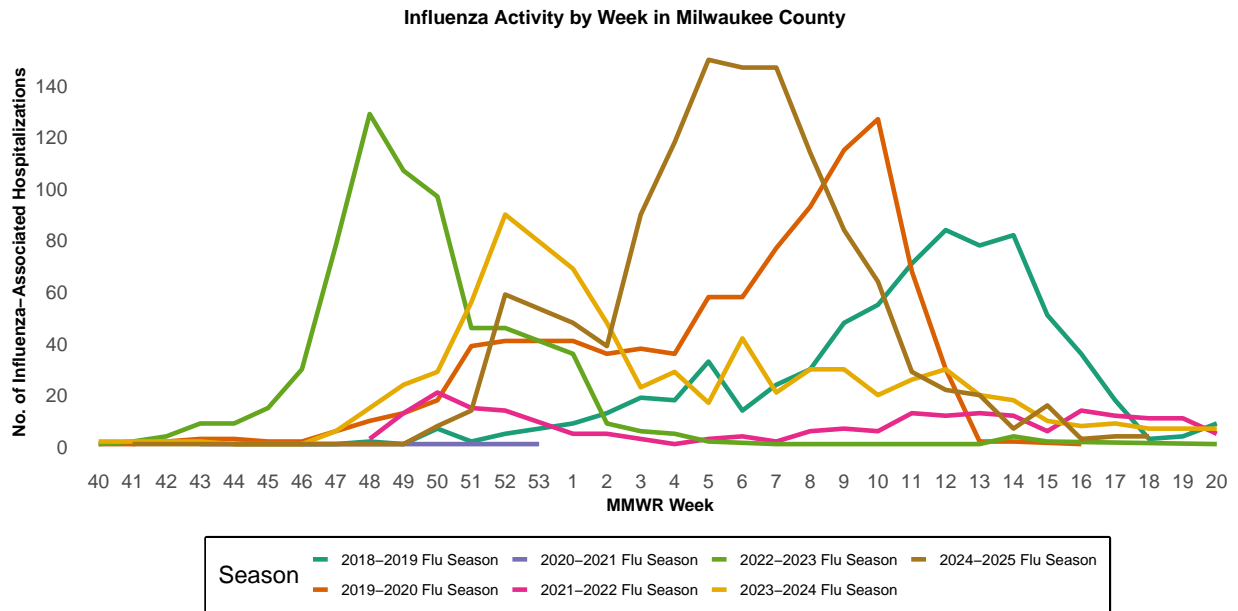
RSV = respiratory syncytial virus, hMPV = human metapneumovirus

Wisconsin Department of Health Services Respiratory Virus Surveillance Report, May 3, 2025

Milwaukee County Influenza Activity

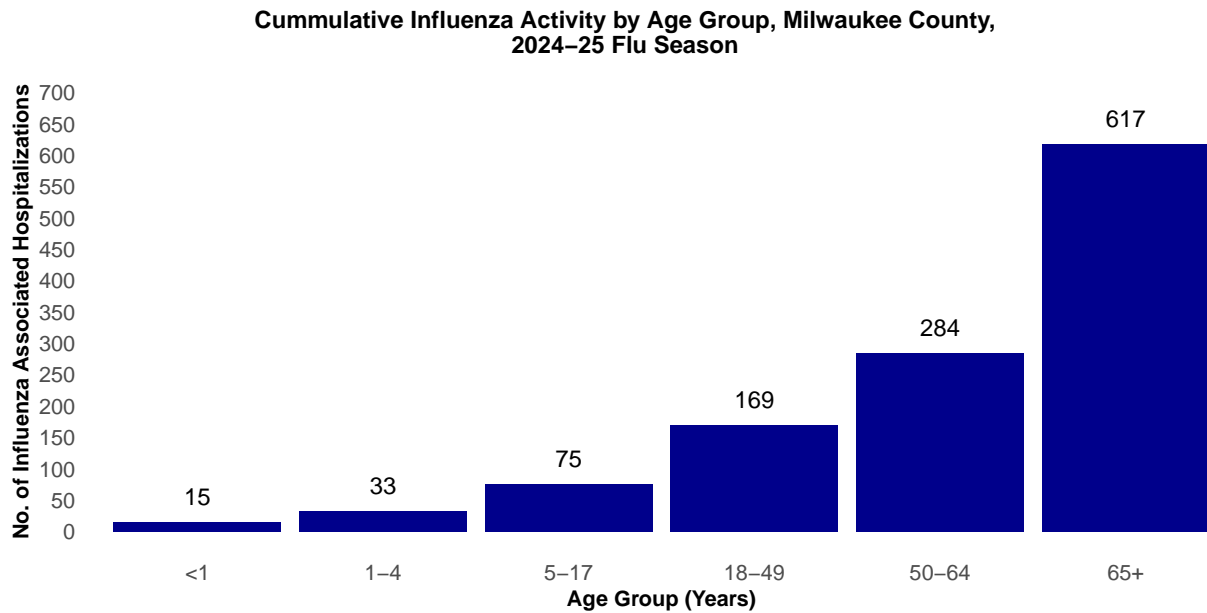
From September 29, 2024 through May 3, 2025 there have been 1193 reported influenza-associated hospitalizations in Milwaukee County.

Milwaukee County Influenza-Associated Hospitalizations



*Flu activity was unusually low in the 2020-2021 flu season, despite high levels of testing. COVID-19 mitigation measures such as wearing face masks, social distancing, staying home, and school closures, in addition to flu vaccination, likely contributed to the low flu activity during this season.

Milwaukee County Influenza-Associated Hospitalizations by Age Group MMWR Week 40, 2024 through Week 18, 2024

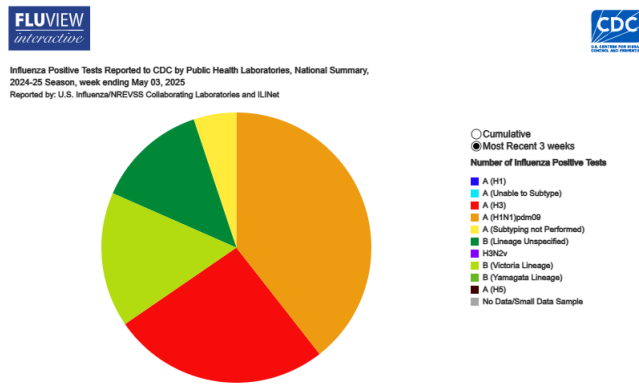


Influenza Testing Data

Public Health Laboratory Influenza Testing Data To-Date (Since Week 40)

| Lab | Number Tested to date | Number Positive to date | Most Recent Week Percent Positive | Predominant A Subtype and Strain | Predominant B Strain | Predominant Type (A or B) |
|------|-----------------------|-------------------------|-----------------------------------|----------------------------------|----------------------|---------------------------|
| CDC | 3,258,608 | 480,747 | 1,813/50,071 (3.6%) | (H1N1)pdm09 | Victoria | B |
| WSLH | - | - | 314/7,873 (4%) | Unknown | Unknown | B |
| MHDL | 8 | 0 | 0/8 (0%) | N/A | N/A | N/A |

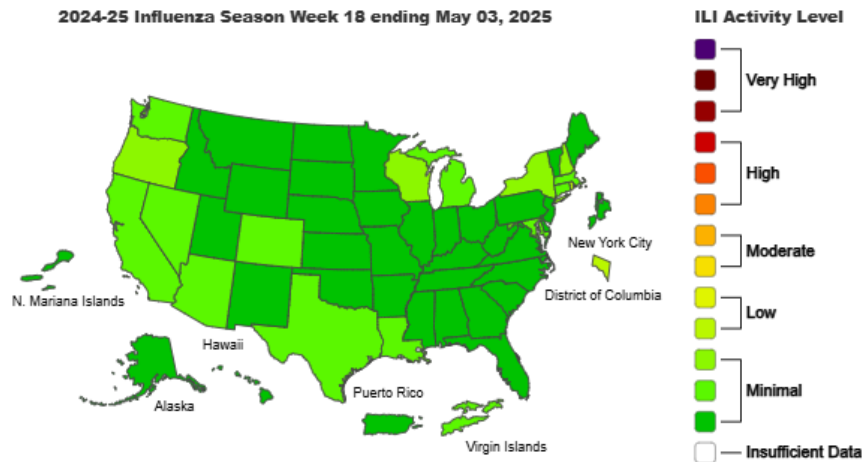
National Influenza Testing Data, CDC FluView



<http://gis.cdc.gov/grasp/fluview/fluportaldashboard.html> accessed

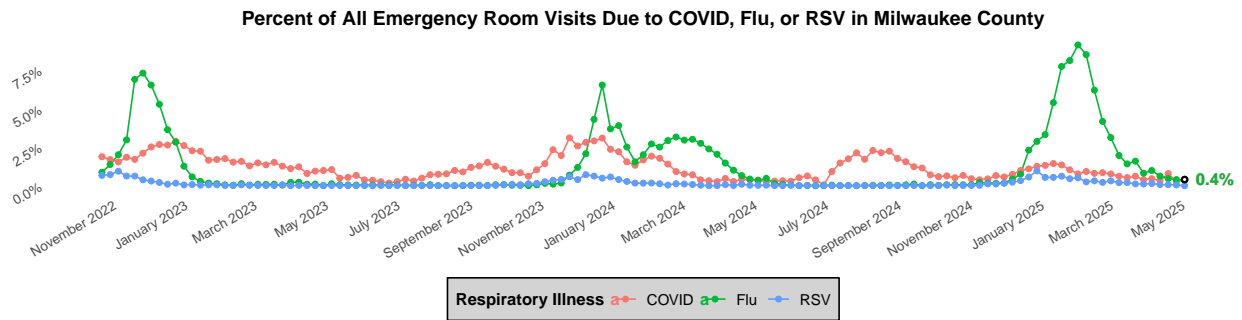
National Influenza Activity

Outpatient Respiratory Illness Activity Map, CDC FluView



<https://www.cdc.gov/flu/weekly/index.htm#MS2> accessed

Respiratory Illness Emergency Department Visits in Milwaukee County



Respiratory Illness Immunization Rates of Milwaukee County Residents, 2024-2025 Season

The Wisconsin Department of Health Services (DHS) Immunization Program has dashboards for statewide and county specific immunization rates for influenza vaccinations, COVID-19 vaccinations, and both infant and adult RSV vaccinations. Each immunization dashboard contains demographic data for people receiving vaccines.

To access these dashboards:

- COVID-19: <https://www.dhs.wisconsin.gov/immunization/covid-19-vaccine-data.htm>
- Influenza: <https://www.dhs.wisconsin.gov/immunization/influenza.htm>
- RSV: <https://www.dhs.wisconsin.gov/immunization/rsv-vaccine-data.htm>

COVID-19 and RSV dashboards are updated weekly year-round and the influenza dashboard is updated weekly during the flu season.

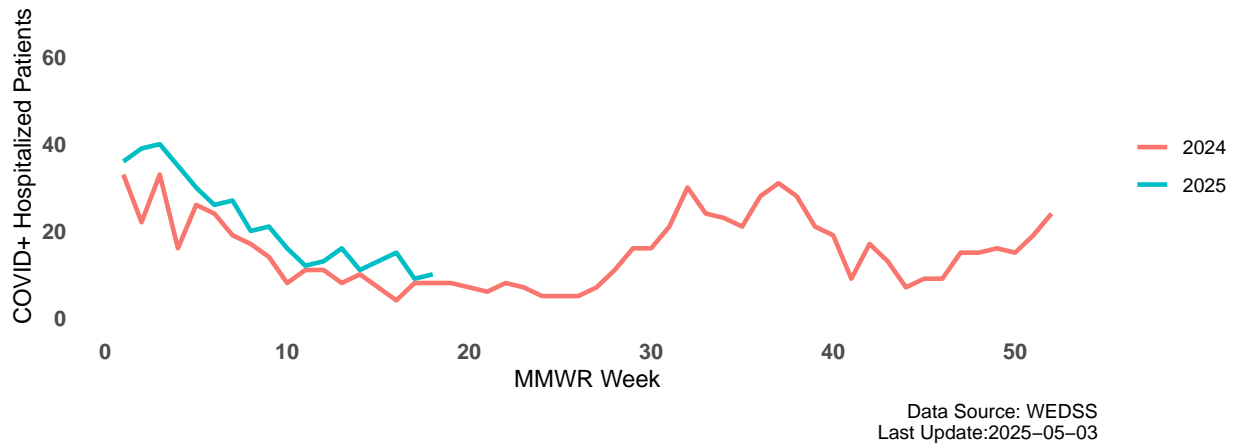
Influenza Vaccine Composition 2024-2025 Influenza Season

All standard-dose flu shots will be a trivalent formulation. The trivalent vaccines for use in the 2024-2025 influenza season contain the following:

- an A/Victoria/4897/2022 (H1N1)pdm09-like virus;
- an A/Thailand/8/2022 (H3N2)-like virus; and
- a B/Austria/1359417/2021 (B/Victoria lineage)-like virus

COVID-19 Activity

Hospitalized Patients that are COVID-19 Positive Timeline, Milwaukee County

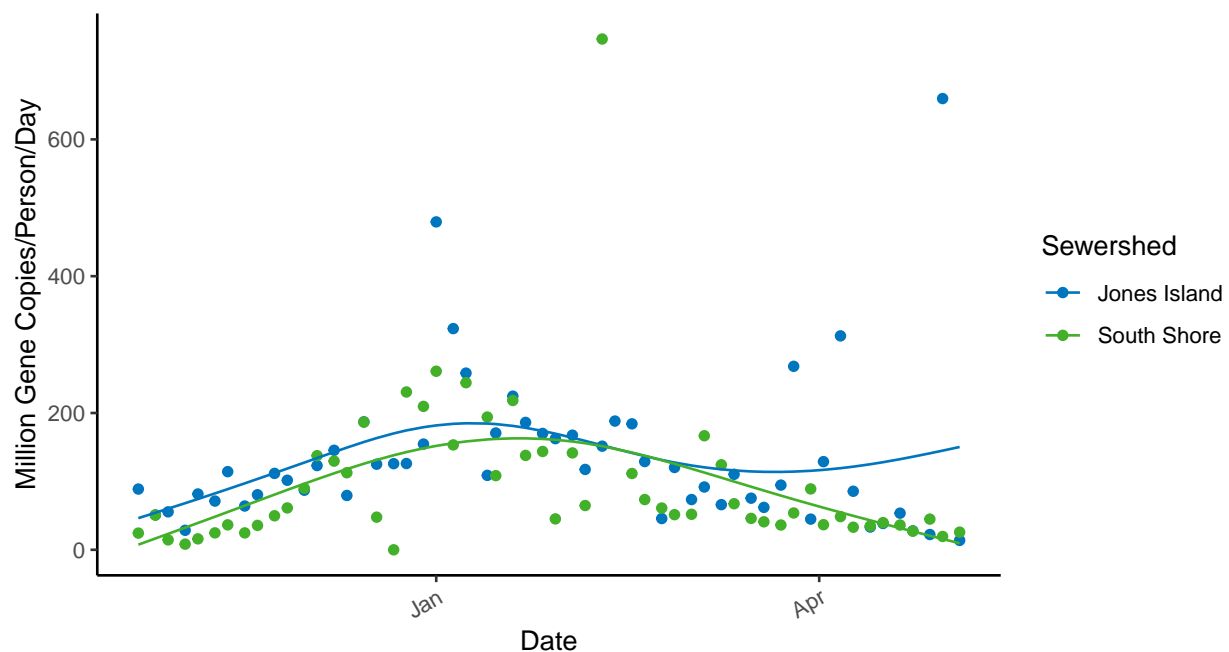


Wastewater Disease Surveillance - Respiratory Illnesses

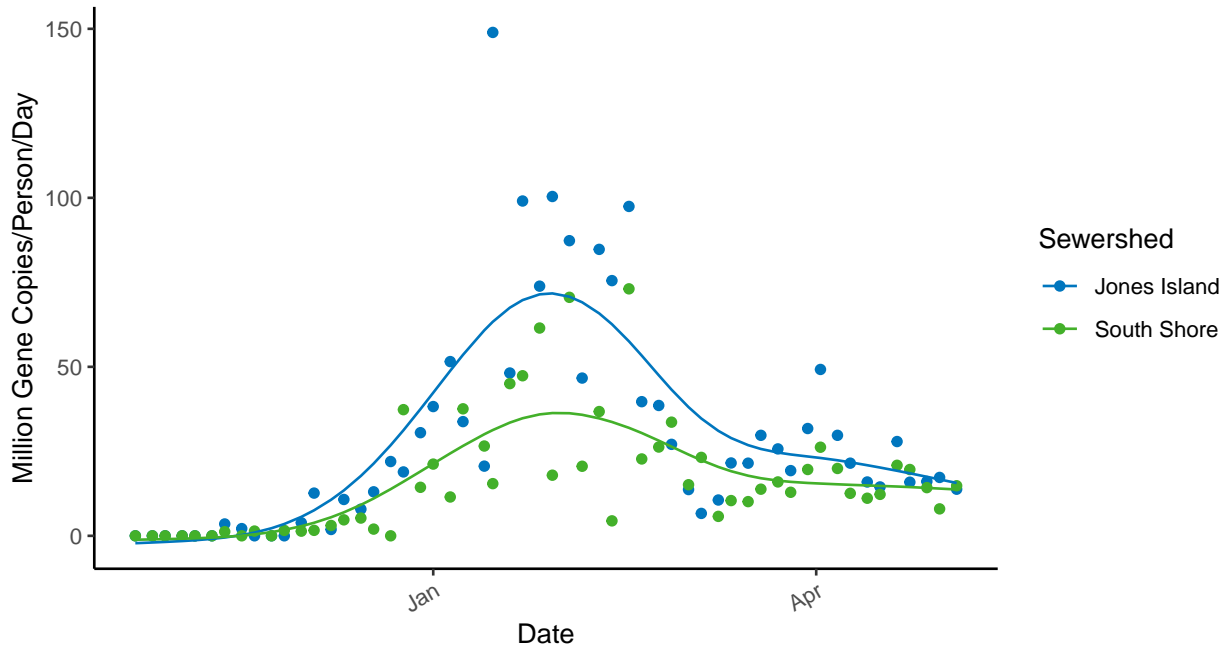
Wastewater disease surveillance is a powerful tool that detects illness before people start to show symptoms. MHD Laboratory does routine disease surveillance from wastewater samples at Milwaukee Metropolitan Sewerage Districts collection points, Jones Island and South Shore. Samples are taken twice weekly at each site. Wastewater disease surveillance can detect a wide variety of illnesses. At MHD, we test for COVID-19, influenza A, influenza B, and RSV respiratory pathogens.

When interpreting wastewater surveillance data, the trend is the most important indicator of disease level in the population. Each of the plots below include a spline that represents the trend of illnesses.

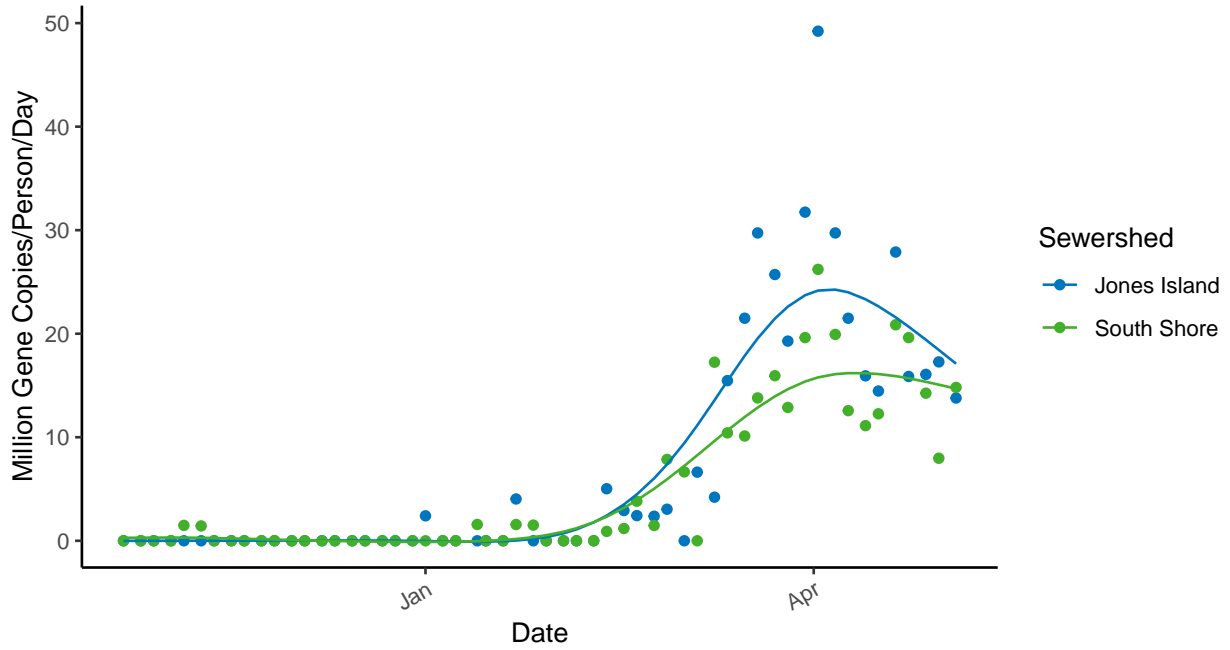
COVID-19 Trends in Milwaukee Sewershed



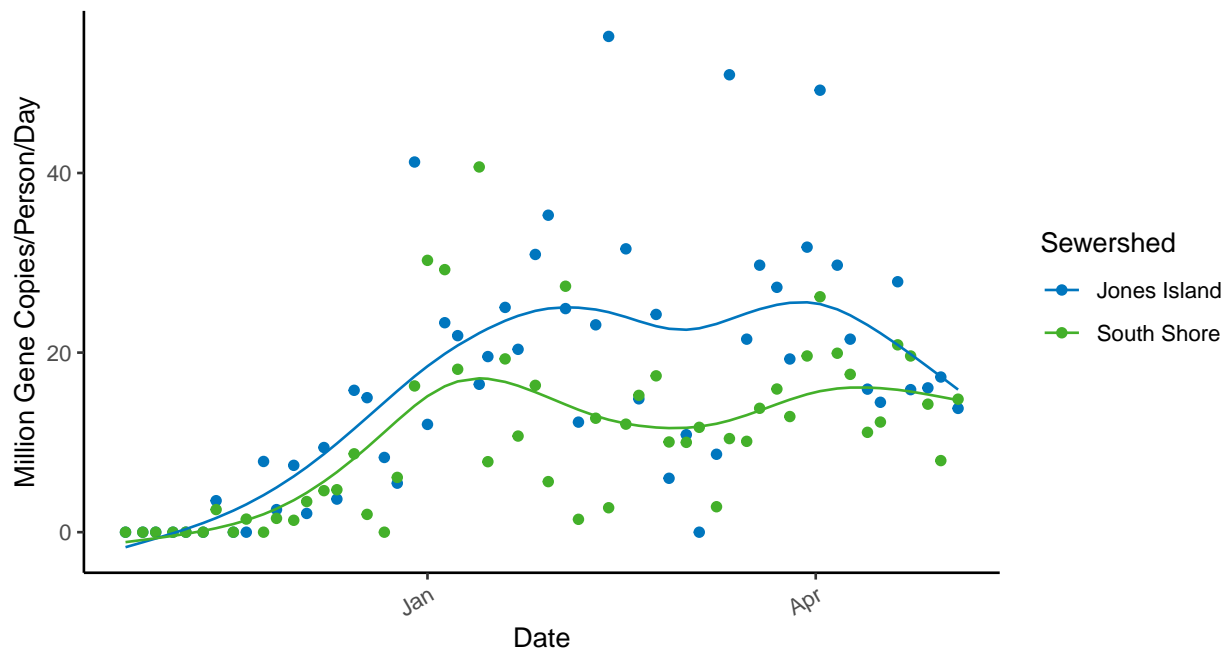
Flu A Trends in Milwaukee Sewershed



Flu B Trends in Milwaukee Sewershed



RSV Trends in Milwaukee Sewershed



To see more interactive wastewater surveillance data, visit the MHD respiratory illness dashboard at <https://milwaukee.gov/wastewater>.

Have feedback on the Milwaukee Respiratory Illness Report? Send an email with the subject line "User Feedback" to SURVNET@milwaukee.gov.