

Milwaukee Respiratory Virus Surveillance Update

MMWR Week 47, Ending November 22, 2025

Contents

Respiratory Illnesses In the News	2
Overview	2
Statewide and Regional Influenza-like Illness Activity	3
Respiratory Virus Laboratory Surveillance	3
Milwaukee County Influenza Activity	4
Influenza Testing Data	5
National Influenza Activity	6
Respiratory Illness Emergency Department Visits in Milwaukee County	6
Respiratory Illness Immunization Rates of Milwaukee County Residents, 2025-2026 Season	8
COVID-19 Activity	8
Wastewater Disease Surveillance - Respiratory Illnesses	9

Respiratory Illnesses In the News

New type of flu emerges: What to know about the new K variant of influenza A: https://thehill.com/homenews/nexstar_media_wire/5622225-new-type-of-flu-emerges-what-to-know-about-the-new-k-variant-of-influenza-a/

Early-infancy RSV infection, inherited allergy may amplify risk of childhood asthma: <https://www.cidrap.umn.edu/respiratory-syncytial-virus-rsv/early-infancy-rsv-infection-inherited-allergy-may-amplify-risk>

Overview

County

- There were 6 influenza-associated hospitalizations reported in Milwaukee County during the week ending on November 22, 2025. From September 28, 2025 through November 22, 2025, there have been 17 reported influenza-associated hospitalizations in Milwaukee County (11 City of Milwaukee residents).

State

- Statewide respiratory illness levels are low.
- Influenza and COVID-19 activity are increasing based on emergency department data and laboratory testing data.
- Rhinovirus/enterovirus and parainfluenza virus detections in laboratory data are elevated but are decreasing.

National

- Seasonal influenza activity remains low nationally but is increasing.
- 0 influenza-associated pediatric deaths occurred during this week.
- The most frequently reported influenza viruses this week were influenza A(H3N2).

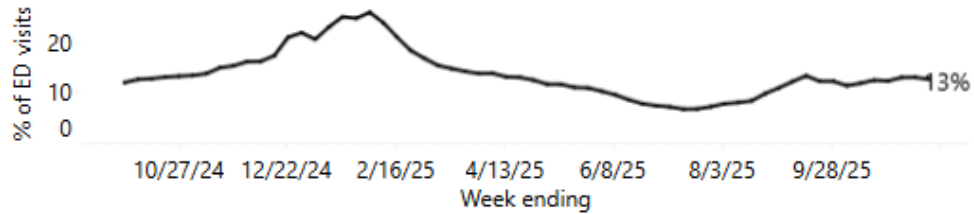
CDC Pediatric Data (Since Week 40)

2025-26 To Date: Total Deaths	2024-25 To Date: Total Deaths	Pediatric Deaths This Week	Notes on Deaths
0	287	0	No influenza-associated pediatric deaths occurring during the 2025-2026 season have been reported to CDC.

Statewide and Regional Influenza-like Illness Activity

Influenza-like illness levels were low statewide and low in the southeastern region of the state.

Overall respiratory illness trends over time

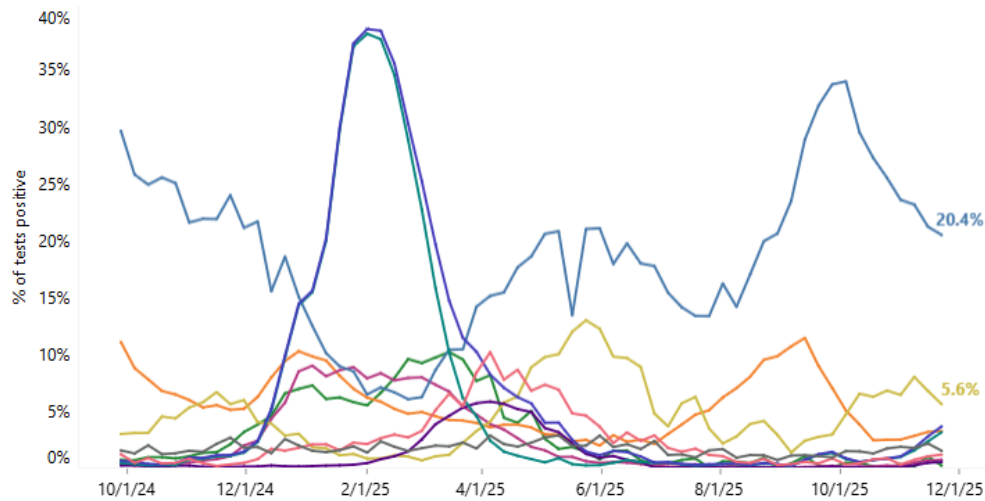


Southeastern Region Influenza-Like Illness Activity

Wisconsin Department of Health Services Respiratory Virus Surveillance, November 22, 2025

Respiratory Virus Laboratory Surveillance

Percent (%) of reported test results **positive** for selected viruses by week
Data are interactive. **Hover over lines** to see more information.



RSV = respiratory syncytial virus, hMPV = human metapneumovirus

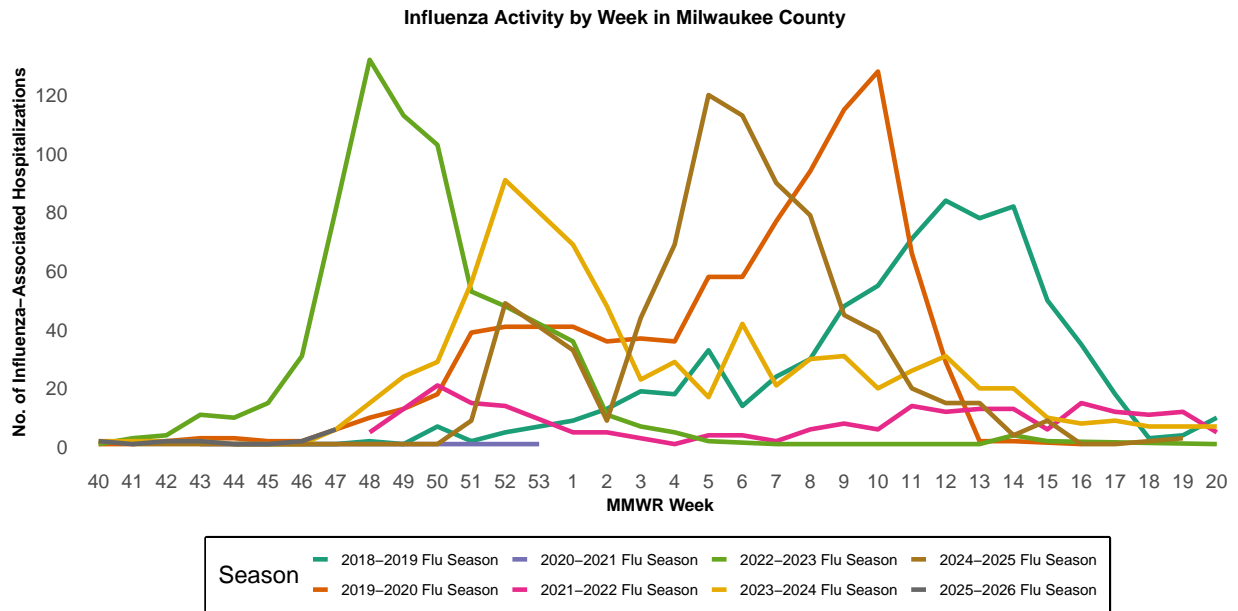
- Adenovirus
- Coronavirus (seasonal)
- COVID-19
- HMPV
- Influenza
- Parainfluenza virus
- Rhinovirus/ Enterovirus
- RSV

Wisconsin Department of Health Services Respiratory Laboratory Testing Data, November 22, 2025

Milwaukee County Influenza Activity

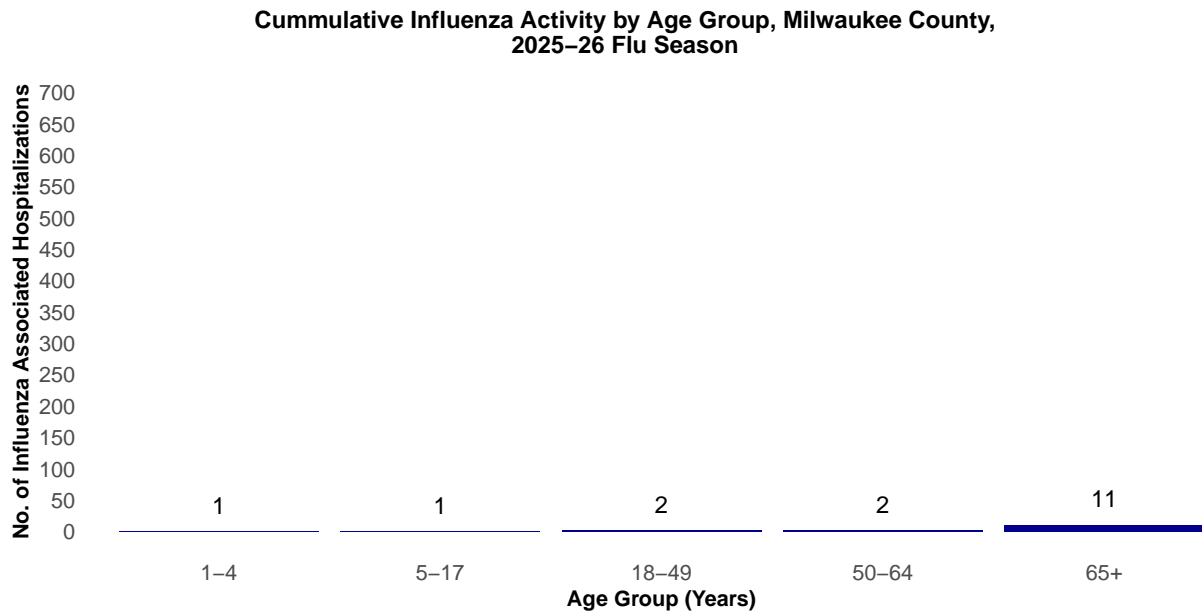
From September 28, 2025 through November 22, 2025 there have been 17 reported influenza-associated hospitalizations in Milwaukee County.

Milwaukee County Influenza-Associated Hospitalizations



*Flu activity was unusually low in the 2020-2021 flu season, despite high levels of testing. COVID-19 mitigation measures such as wearing face masks, social distancing, staying home, and school closures, in addition to flu vaccination, likely contributed to the low flu activity during this season.

Milwaukee County Influenza-Associated Hospitalizations by Age Group MMWR Week 40, 2024 through Week 47, 2024



Influenza Testing Data

Public Health Laboratory Influenza Testing Data To-Date (Since Week 40)

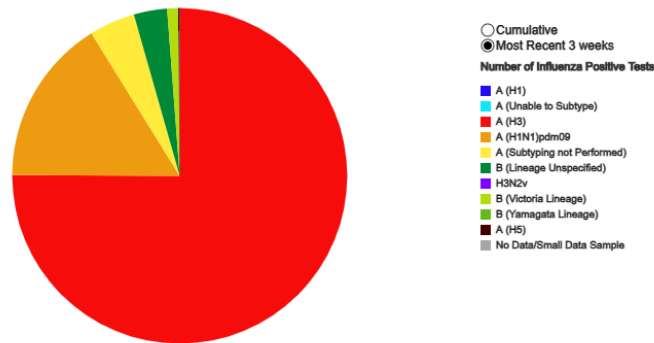
CDC Laboratory Testing predominant subtype is A. The predominant influenza A subtype is (H1N1)pdm09 and the predominant influenza B subtype is Victoria.

Lab	Number Tested to date	Number Positive to date	Most Recent Week Percent Positive
CDC	418,219	6,174	1,646/32,972 (5.0%)
WSLH	-	-	217/5,979 (3.6%)
MHDL	NA	NA	NA

National Influenza Testing Data, CDC FluView



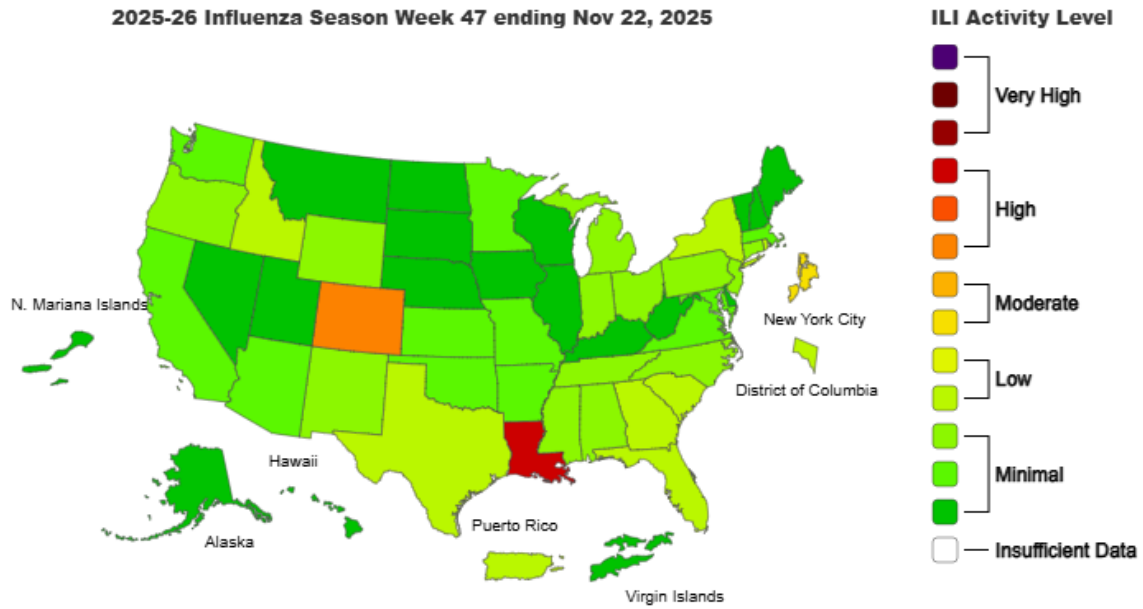
Influenza Positive Tests Reported to CDC by Public Health Laboratories, National Summary, 2025-26 Season, week ending Nov 22, 2025
Reported by: U.S. Influenza/NREVSS Collaborating Laboratories and ILINet



<http://gis.cdc.gov/grasp/fluview/fluportaldashboard.html> accessed

National Influenza Activity

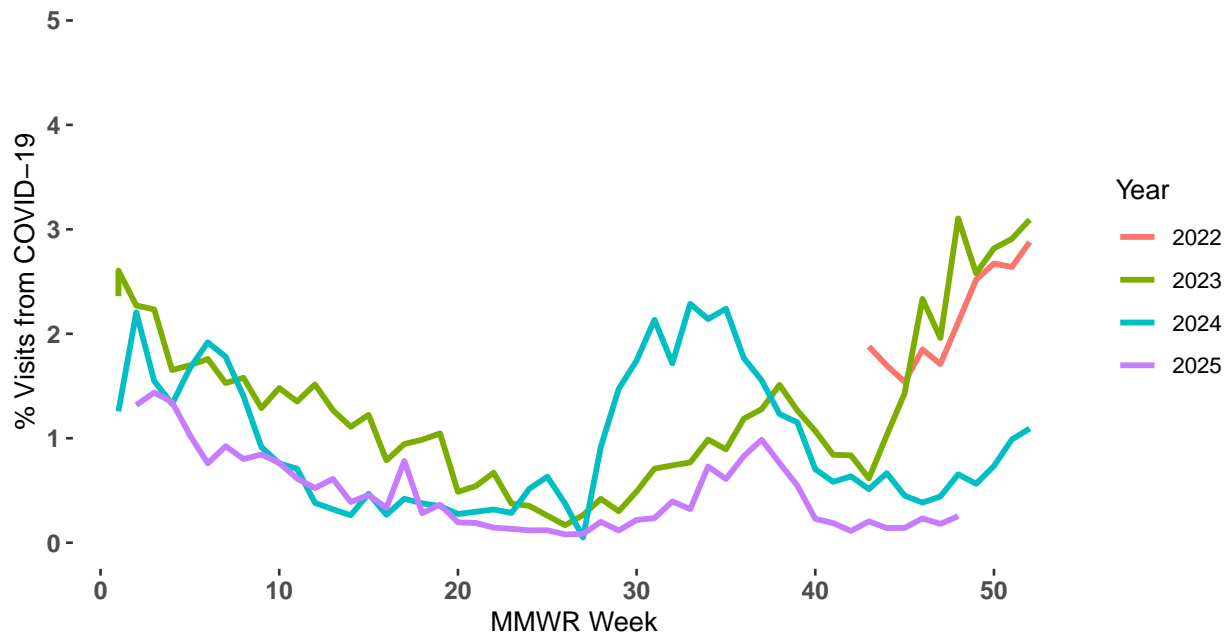
Outpatient Respiratory Illness Activity Map, CDC FluView



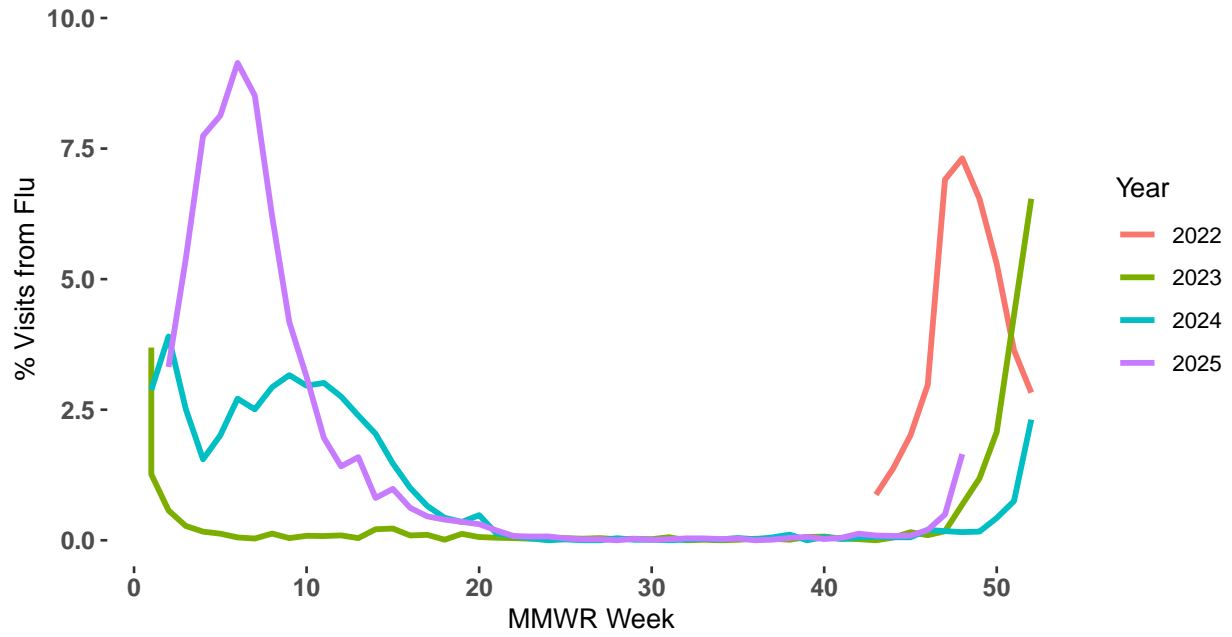
<https://www.cdc.gov/flu/weekly/index.htm#MS2> accessed

Respiratory Illness Emergency Department Visits in Milwaukee County

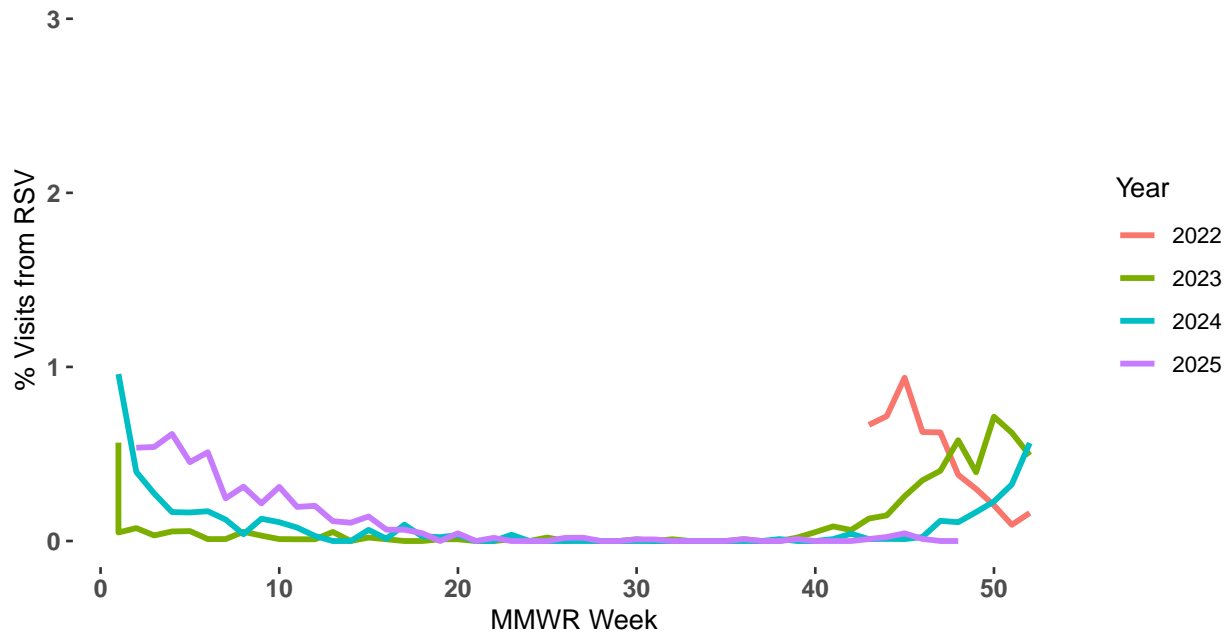
Emergency Room Visits Due to COVID-19



Emergency Room Visits Due to Flu



Emergency Room Visits Due to RSV



Respiratory Illness Immunization Rates of Milwaukee County Residents, 2025-2026 Season

The Wisconsin Department of Health Services (DHS) Immunization Program has dashboards for statewide and county specific immunization rates for influenza vaccinations, COVID-19 vaccinations, and both infant and adult RSV vaccinations. Each immunization dashboard contains demographic data for people receiving vaccines.

To access these dashboards:

- COVID-19: <https://www.dhs.wisconsin.gov/immunization/covid-19-vaccine-data.htm>
- Influenza: <https://www.dhs.wisconsin.gov/immunization/influenza.htm>
- RSV: <https://www.dhs.wisconsin.gov/immunization/rsv-vaccine-data.htm>

COVID-19 and RSV dashboards are updated weekly year-round and the influenza dashboard is updated weekly during the flu season.

Influenza Vaccine Composition 2025-2026 Influenza Season

All standard-dose flu shots will be a trivalent formulation. The trivalent vaccines for use in the 2025-2026 influenza season contain the following:

Egg-based vaccines

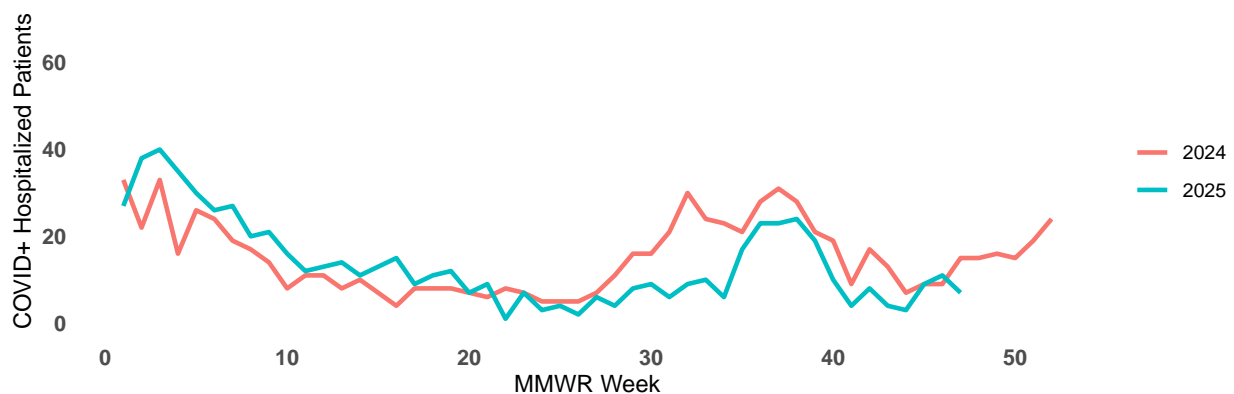
- an A/Victoria/4897/2022 (H1N1)pdm09-like virus;
- an A/Croatia/10136RV/2023 (H3N2)-like virus; and
- a B/Austria/1359417/2021 (B/Victoria lineage)-like virus

Cell- or recombinant-based vaccines

- an A/Wisconsin/67/2022 (H1N1)pdm09-like virus;
- an A/District of Columbia/27/2023 (H3N2)-like virus; and
- a B/Austria/1359417/2021 (B/Victoria lineage)-like virus

COVID-19 Activity

Hospitalized Patients that are COVID-19 Positive Timeline, Milwaukee County

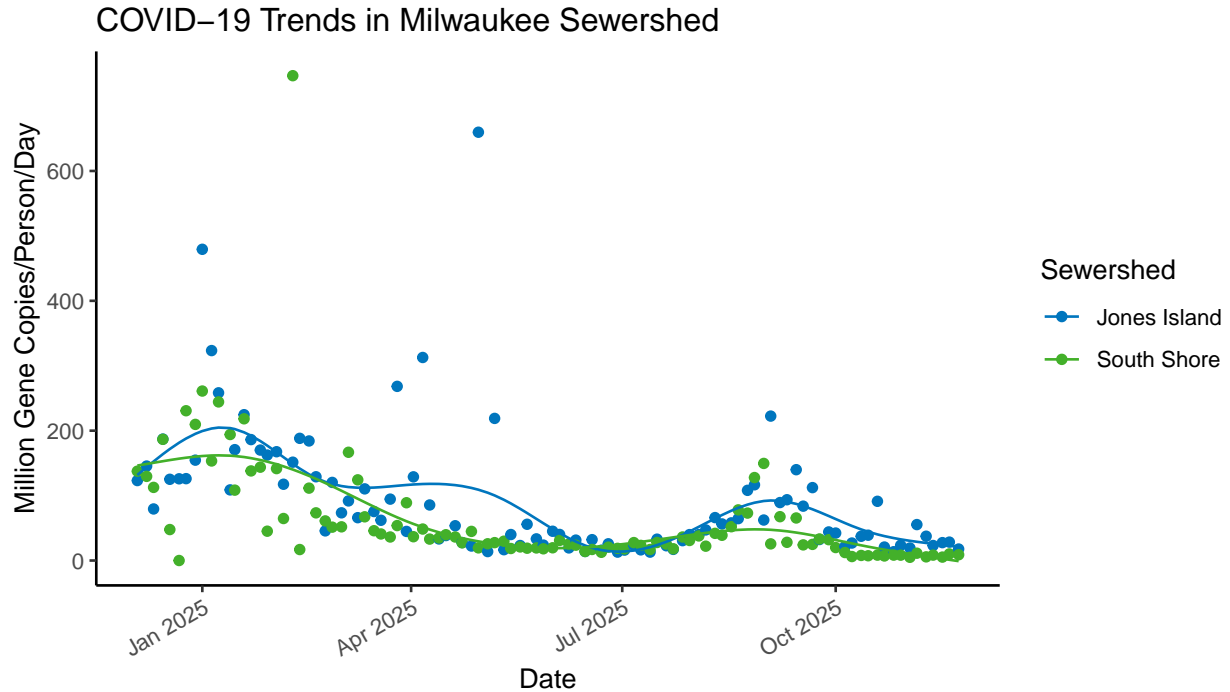


Data Source: WEDSS
Last Update: 2025-11-19

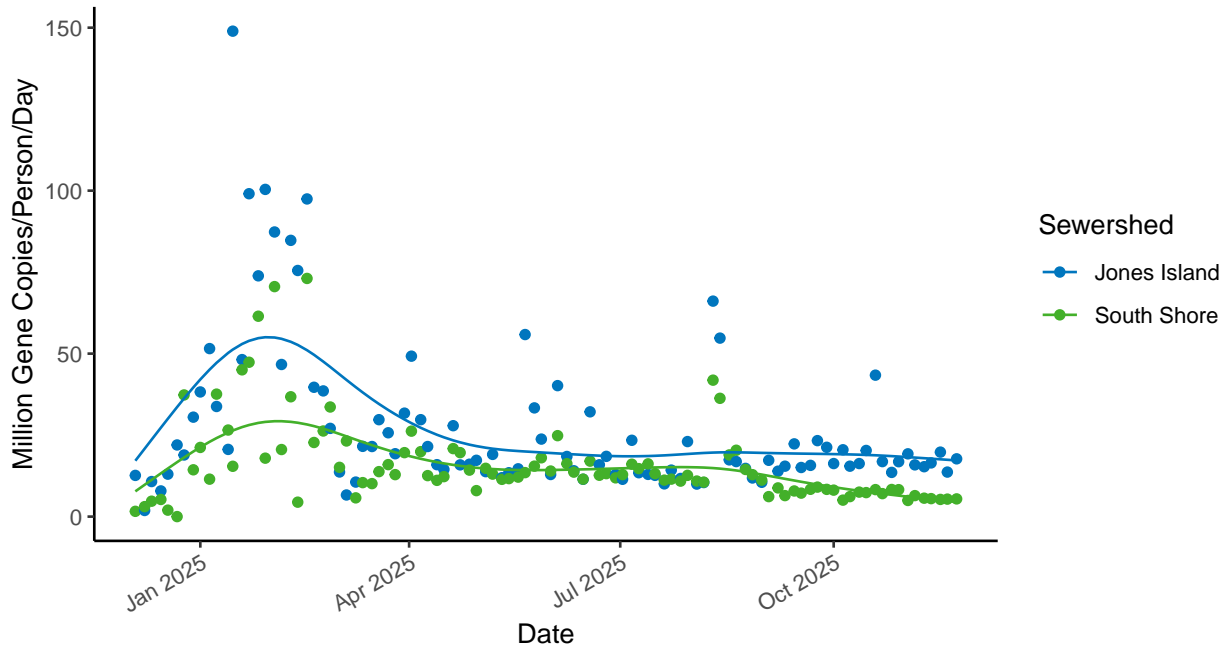
Wastewater Disease Surveillance - Respiratory Illnesses

Wastewater disease surveillance is a powerful tool that detects illness before people start to show symptoms. MHD Laboratory does routine disease surveillance from wastewater samples at Milwaukee Metropolitan Sewerage Districts collection points, Jones Island and South Shore. Samples are taken twice weekly at each site. Wastewater disease surveillance can detect a wide variety of illnesses. At MHD, we test for COVID-19, influenza A, influenza B, and RSV respiratory pathogens.

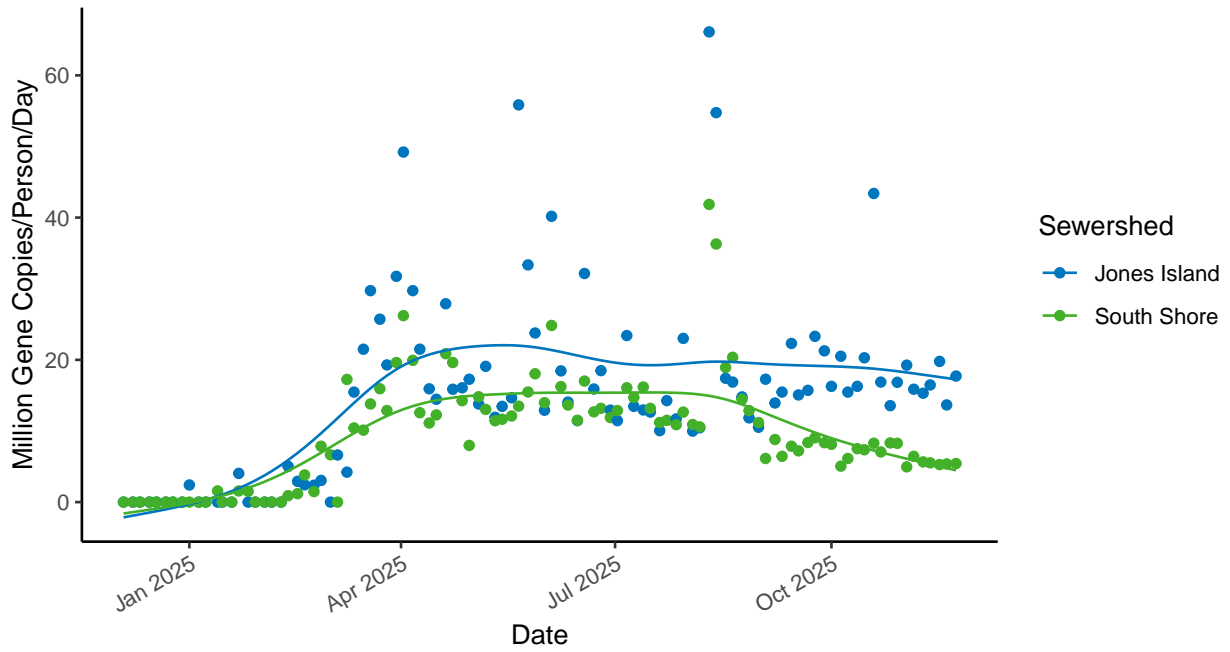
When interpreting wastewater surveillance data, the trend is the most important indicator of disease level in the population. Each of the plots below include a spline that represents the trend of illnesses.



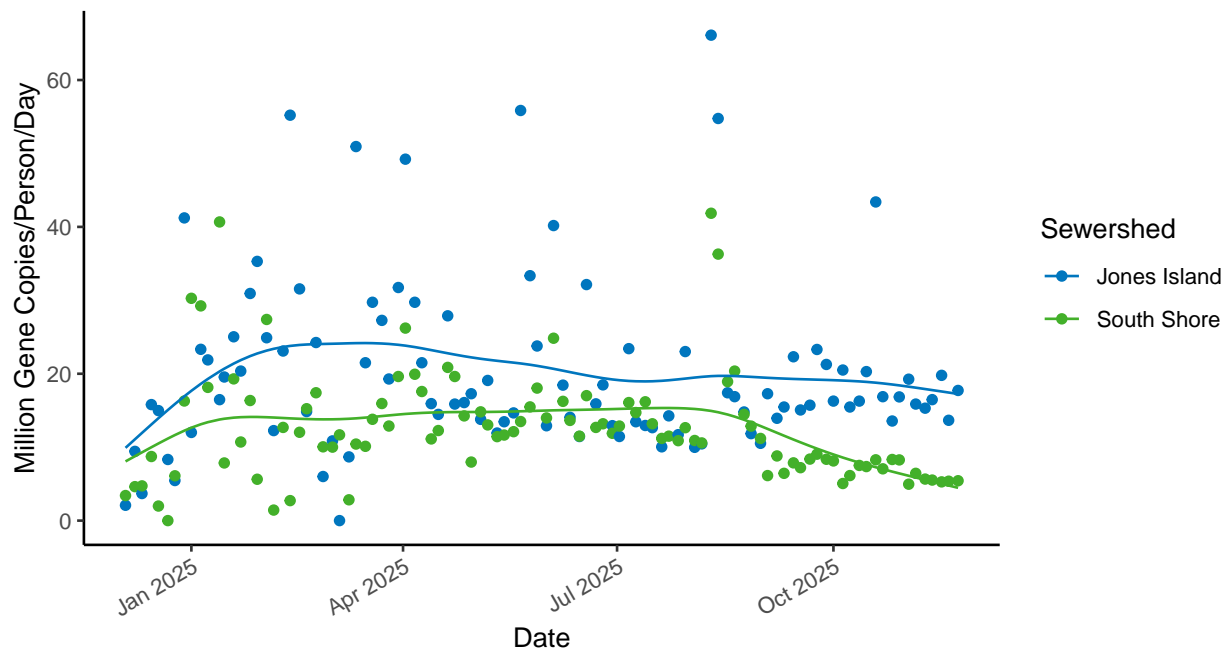
Flu A Trends in Milwaukee Sewershed



Flu B Trends in Milwaukee Sewershed



RSV Trends in Milwaukee Sewershed



To see more interactive wastewater surveillance data, visit the MHD respiratory illness dashboard at <https://milwaukee.gov/wastewater>.

Have feedback on the Milwaukee Respiratory Illness Report? Send an email with the subject line "User Feedback" to SURVNET@milwaukee.gov.