

# Milwaukee Respiratory Virus Surveillance Update

## MMWR Week 45, Ending November 8, 2025

### Contents

Respiratory Illnesses In the News . . . . .	2
Overview . . . . .	2
Statewide and Regional Influenza-like Illness Activity . . . . .	3
Respiratory Virus Laboratory Surveillance . . . . .	3
Milwaukee County Influenza Activity . . . . .	4
Influenza Testing Data . . . . .	5
National Influenza Activity . . . . .	6
Respiratory Illness Emergency Department Visits in Milwaukee County . . . . .	6
Respiratory Illness Immunization Rates of Milwaukee County Residents, 2025-2026 Season . . . . .	8
COVID-19 Activity . . . . .	8
Wastewater Disease Surveillance - Respiratory Illnesses . . . . .	9

## Respiratory Illnesses In the News

Wisconsin DHS launches new Outpatient Influenza-Like Illness Dashboard: <https://www.dhs.wisconsin.gov/disease/ilinet-data.htm?auHash=XY9CI1yyV1p91UKS4nfpScgcRf0qUX81x8avxGAFSvY>

Evidence found of asymptomatic H5N1 cases historically with potential human to human transmission: <https://www.cidrap.umn.edu/avian-influenza-bird-flu/review-human-h5n1-avian-flu-cases-can-be-asymptomatic-and-virus-likely>

### Overview

#### County

- There were 1 influenza-associated hospitalizations reported in Milwaukee County during the week ending on November 8, 2025. From September 28, 2025 through November 8, 2025, there have been 9 reported influenza-associated hospitalizations in Milwaukee County (6 City of Milwaukee residents).

#### State

- Statewide respiratory illness levels are low but increasing.
- COVID-19, influenza and RSV activity levels are minimal based on emergency department. Wastewater data also shows little activity for these viruses.
- Rhinovirus/enterovirus and parainfluenza virus detections in laboratory data are elevated.

#### National

Disclaimer: National influenza data is currently unavailable for this reporting period. Updates will be provided as soon as the data becomes available. Any current national data is through MMWR Week 38, 2025.

- Seasonal influenza remains low nationally but is increasing. This week 1 jurisdiction experienced moderate influenza activity and no jurisdictions experienced high or very high activity.
- 0 influenza-associated pediatric deaths occurred during this week.
- Influenza A(H3N2) was the predominant virus this week.

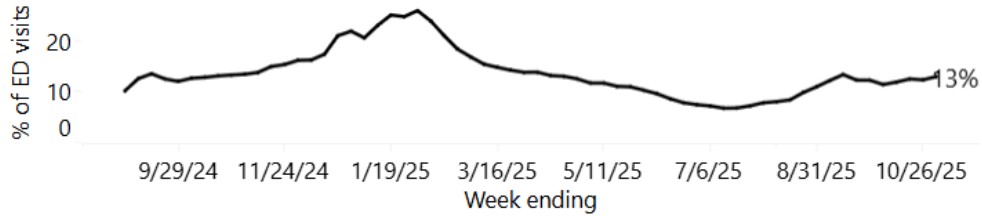
#### CDC Pediatric Data (Since Week 40)

2024-25 To Date: Total Deaths	2023-24 To Date: Total Deaths	Pediatric Deaths This Week	Notes on Deaths
0	287	0	No influenza-associated pediatric deaths occurring during the 2025-2026 season have been reported to CDC. One influenza-associated pediatric death that occurred during the 2024-2025 season was reported to CDC during Week 45. The death was associated with an influenza A virus for which no subtyping was performed and occurred during Week 11 (the week ending March 15, 2025). A total of 287 influenza-associated pediatric deaths occurring during the 2024-2025 season have been reported to CDC.

## Statewide and Regional Influenza-like Illness Activity

Influenza-like illness levels were low statewide and low in the southeastern region of the state.

### Overall respiratory illness trends over time



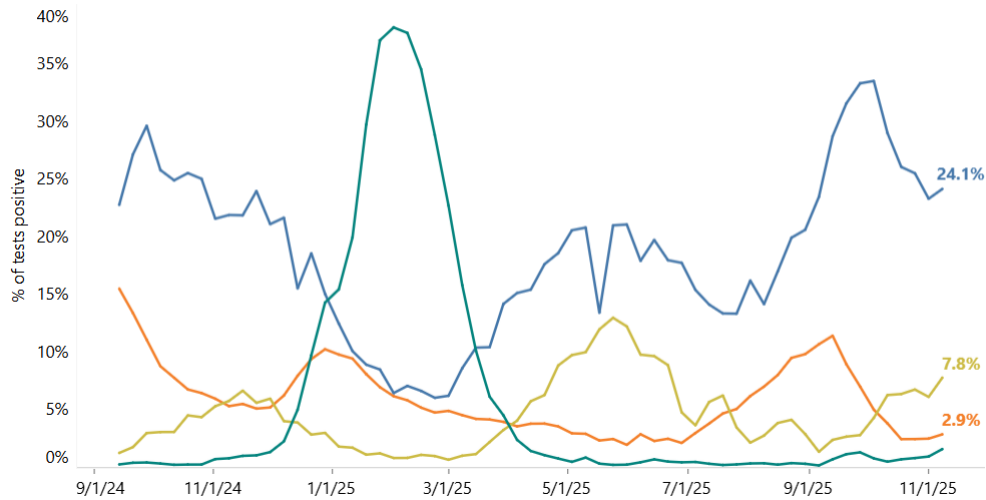
Southeastern Region Influenza-Like Illness Activity

Wisconsin Department of Health Services Respiratory Virus Surveillance, November 8, 2025

## Respiratory Virus Laboratory Surveillance

### Percent (%) of reported test results positive for selected viruses by week

Data are interactive. Hover over lines to see more information.



RSV = respiratory syncytial virus, hMPV = human metapneumovirus

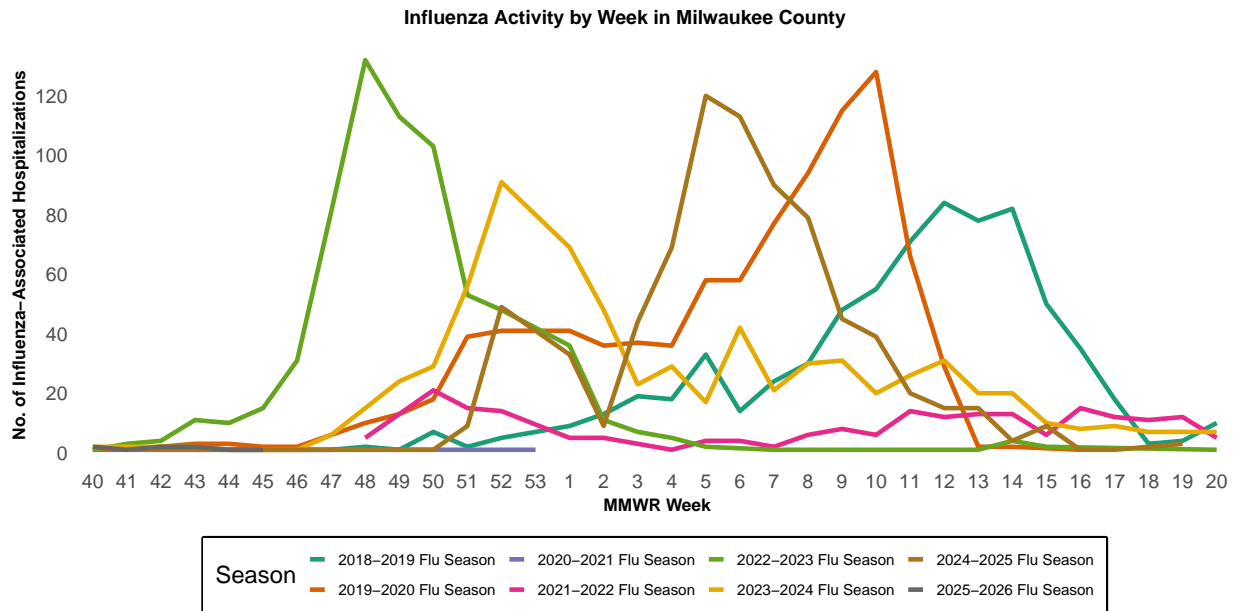
- Adenovirus
- Coronavirus (seasonal)
- COVID-19
- HMPV
- Influenza
- Parainfluenza virus
- Rhinovirus/ Enterovirus
- RSV

Wisconsin Department of Health Services Respiratory Laboratory Testing Data, November 8, 2025

## Milwaukee County Influenza Activity

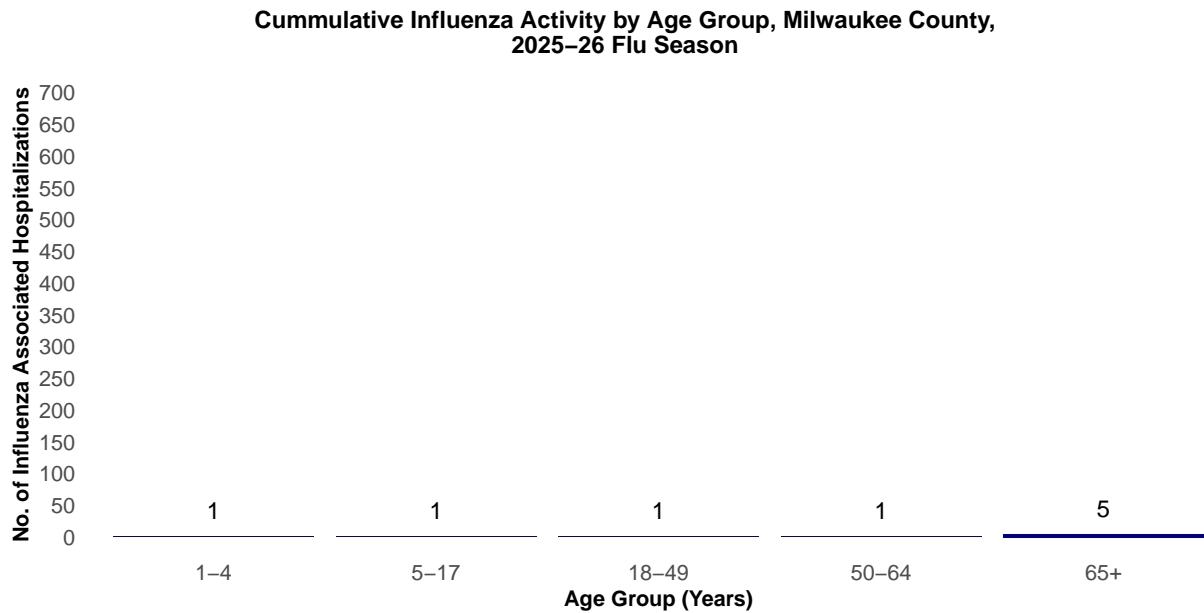
From September 28, 2025 through November 8, 2025 there have been 9 reported influenza-associated hospitalizations in Milwaukee County.

### Milwaukee County Influenza-Associated Hospitalizations



\*Flu activity was unusually low in the 2020-2021 flu season, despite high levels of testing. COVID-19 mitigation measures such as wearing face masks, social distancing, staying home, and school closures, in addition to flu vaccination, likely contributed to the low flu activity during this season.

### Milwaukee County Influenza-Associated Hospitalizations by Age Group MMWR Week 40, 2024 through Week 45, 2024



## Influenza Testing Data

### Public Health Laboratory Influenza Testing Data To-Date (Since Week 40)

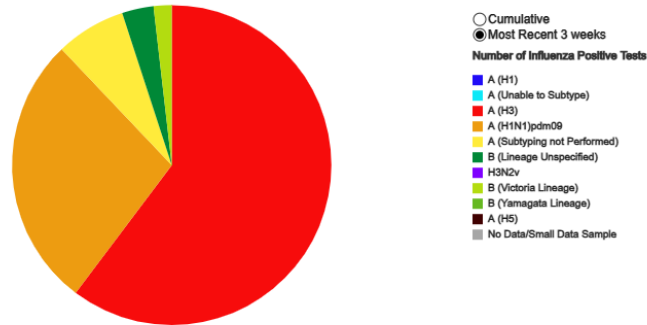
CDC Laboratory Testing predominant subtype is A. The predominant influenza A subtype is H3N2 and the predominant influenza B subtype is Victoria.

Lab	Number Tested to date	Number Positive to date	Most Recent Week Percent Positive
CDC	314,686	2,789	867/42,928 (2.0%)
WSLH	-	-	112/6,215 (1.8%)
MHDL	1	0	0%

### National Influenza Testing Data, CDC FluView



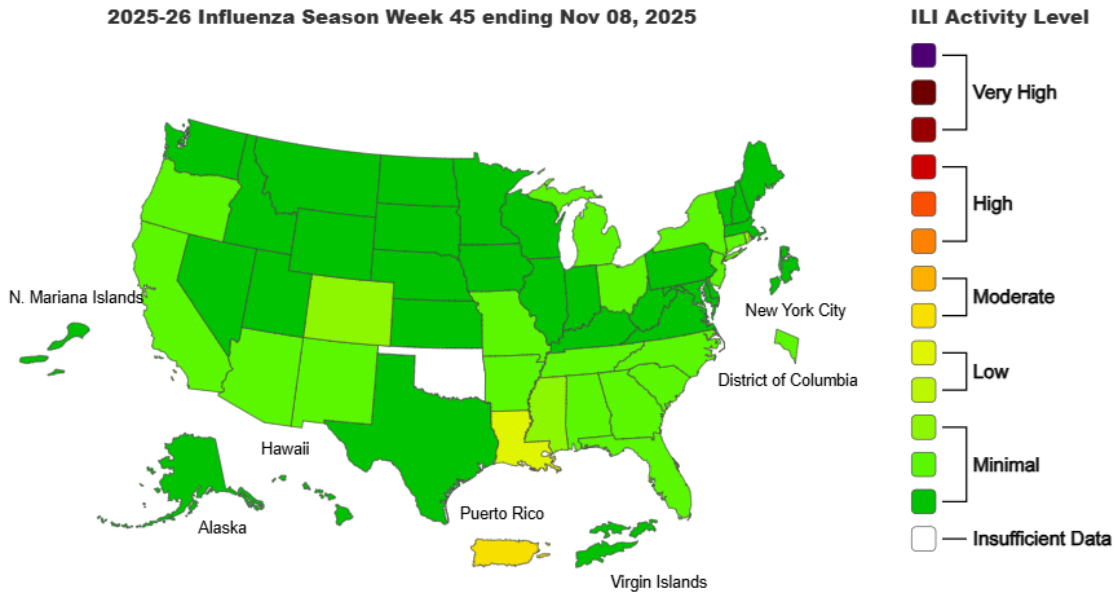
Influenza Positive Tests Reported to CDC by Public Health Laboratories, National Summary, 2025-26 Season, week ending Nov 08, 2025  
Reported by: U.S. Influenza/NREVSS Collaborating Laboratories and ILINet



<http://gis.cdc.gov/grasp/fluview/fluportaldashboard.html> accessed

## National Influenza Activity

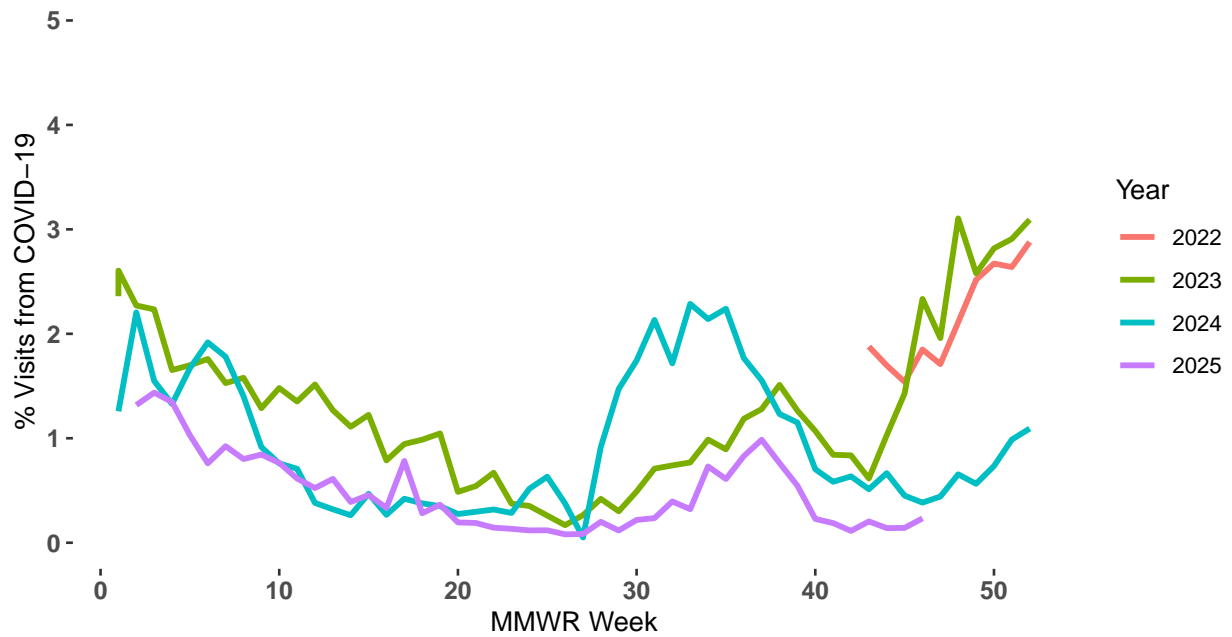
### Outpatient Respiratory Illness Activity Map, CDC FluView



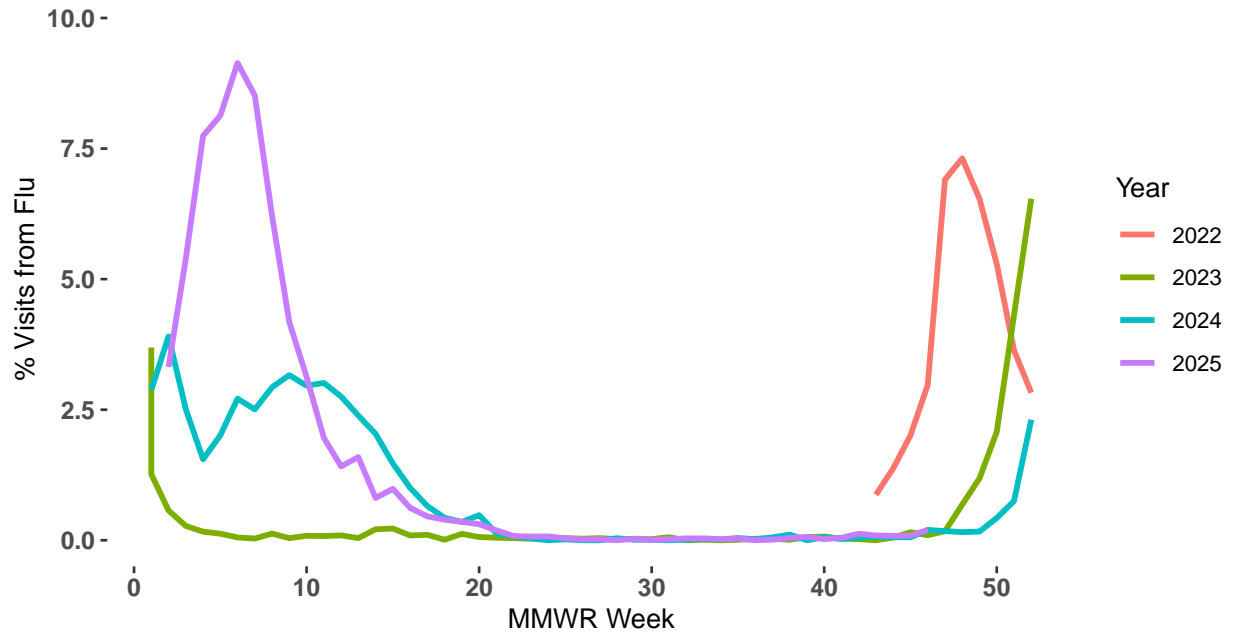
<https://www.cdc.gov/flu/weekly/index.htm#MS2> accessed

## Respiratory Illness Emergency Department Visits in Milwaukee County

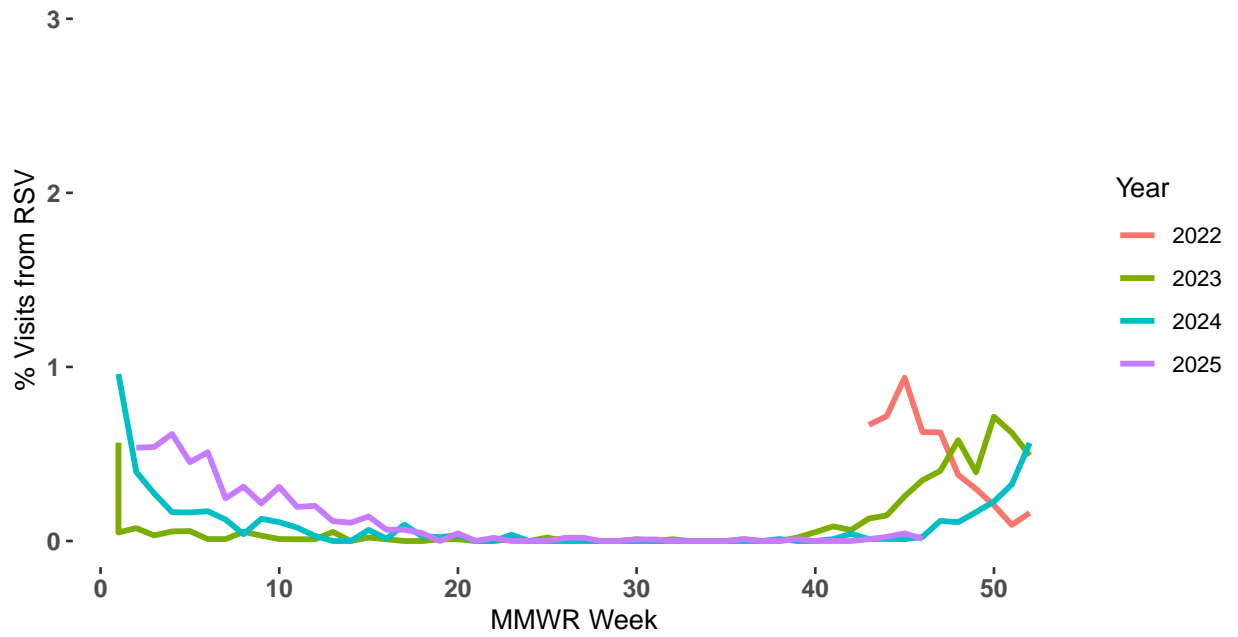
### Emergency Room Visits Due to COVID-19



Emergency Room Visits Due to Flu



Emergency Room Visits Due to RSV



## Respiratory Illness Immunization Rates of Milwaukee County Residents, 2025-2026 Season

The Wisconsin Department of Health Services (DHS) Immunization Program has dashboards for statewide and county specific immunization rates for influenza vaccinations, COVID-19 vaccinations, and both infant and adult RSV vaccinations. Each immunization dashboard contains demographic data for people receiving vaccines.

To access these dashboards:

- COVID-19: <https://www.dhs.wisconsin.gov/immunization/covid-19-vaccine-data.htm>
- Influenza: <https://www.dhs.wisconsin.gov/immunization/influenza.htm>
- RSV: <https://www.dhs.wisconsin.gov/immunization/rsv-vaccine-data.htm>

COVID-19 and RSV dashboards are updated weekly year-round and the influenza dashboard is updated weekly during the flu season.

### Influenza Vaccine Composition 2025-2026 Influenza Season

All standard-dose flu shots will be a trivalent formulation. The trivalent vaccines for use in the 2025-2026 influenza season contain the following:

Egg-based vaccines

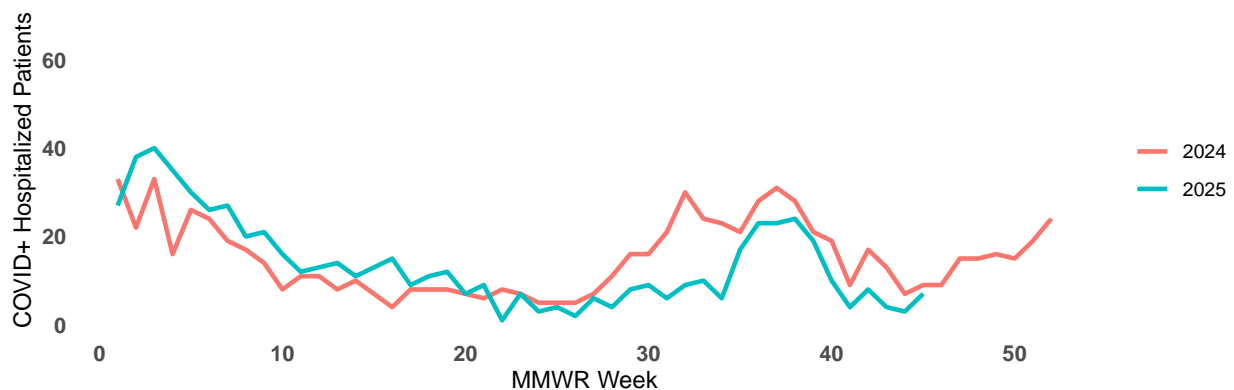
- an A/Victoria/4897/2022 (H1N1)pdm09-like virus;
- an A/Croatia/10136RV/2023 (H3N2)-like virus; and
- a B/Austria/1359417/2021 (B/Victoria lineage)-like virus

Cell- or recombinant-based vaccines

- an A/Wisconsin/67/2022 (H1N1)pdm09-like virus;
- an A/District of Columbia/27/2023 (H3N2)-like virus; and
- a B/Austria/1359417/2021 (B/Victoria lineage)-like virus

## COVID-19 Activity

### Hospitalized Patients that are COVID-19 Positive Timeline, Milwaukee County

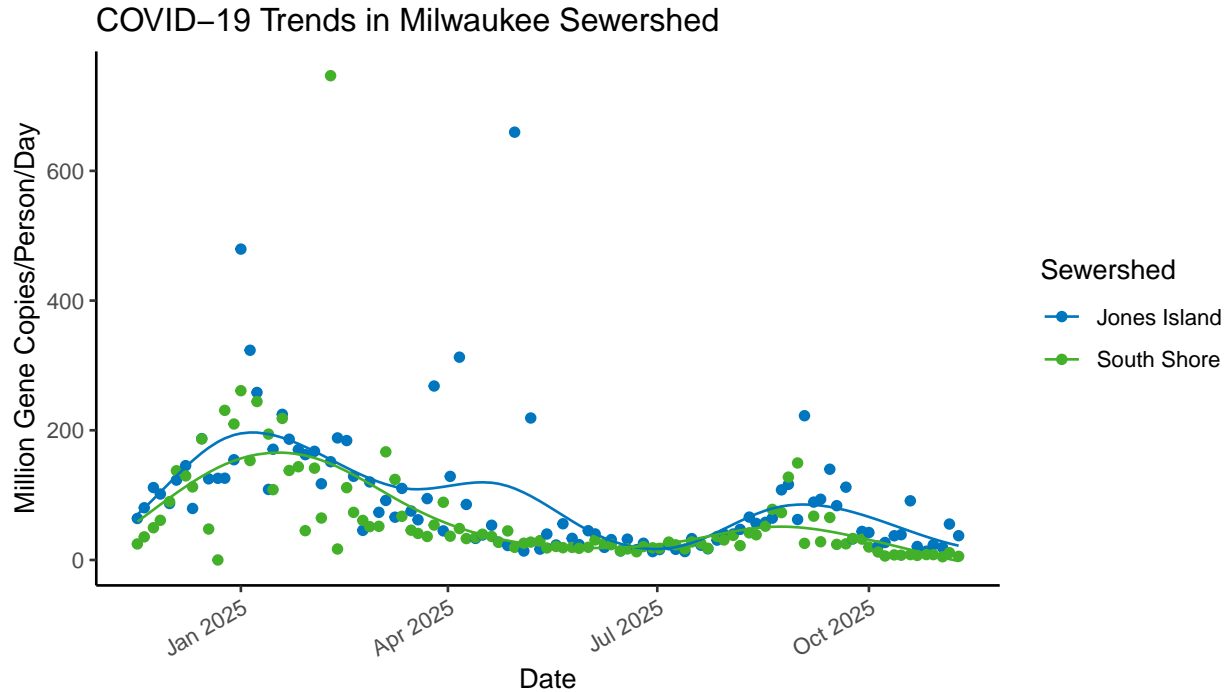


Data Source: WEDSS  
Last Update: 2025-11-08

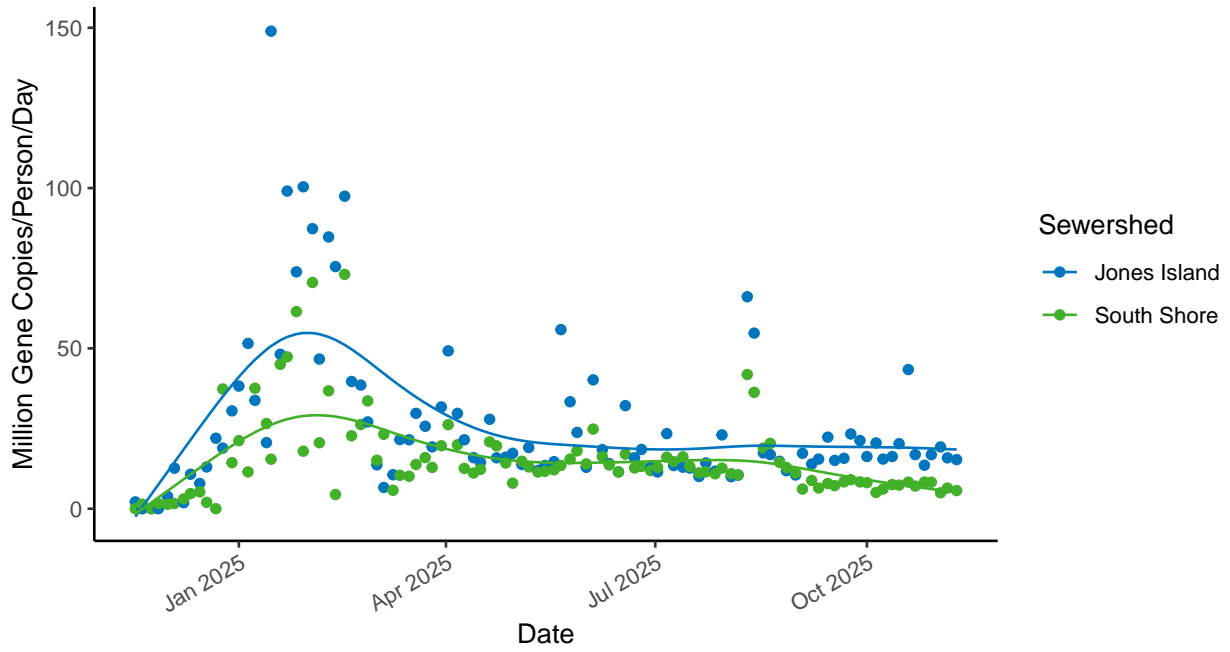
## Wastewater Disease Surveillance - Respiratory Illnesses

Wastewater disease surveillance is a powerful tool that detects illness before people start to show symptoms. MHD Laboratory does routine disease surveillance from wastewater samples at Milwaukee Metropolitan Sewerage Districts collection points, Jones Island and South Shore. Samples are taken twice weekly at each site. Wastewater disease surveillance can detect a wide variety of illnesses. At MHD, we test for COVID-19, influenza A, influenza B, and RSV respiratory pathogens.

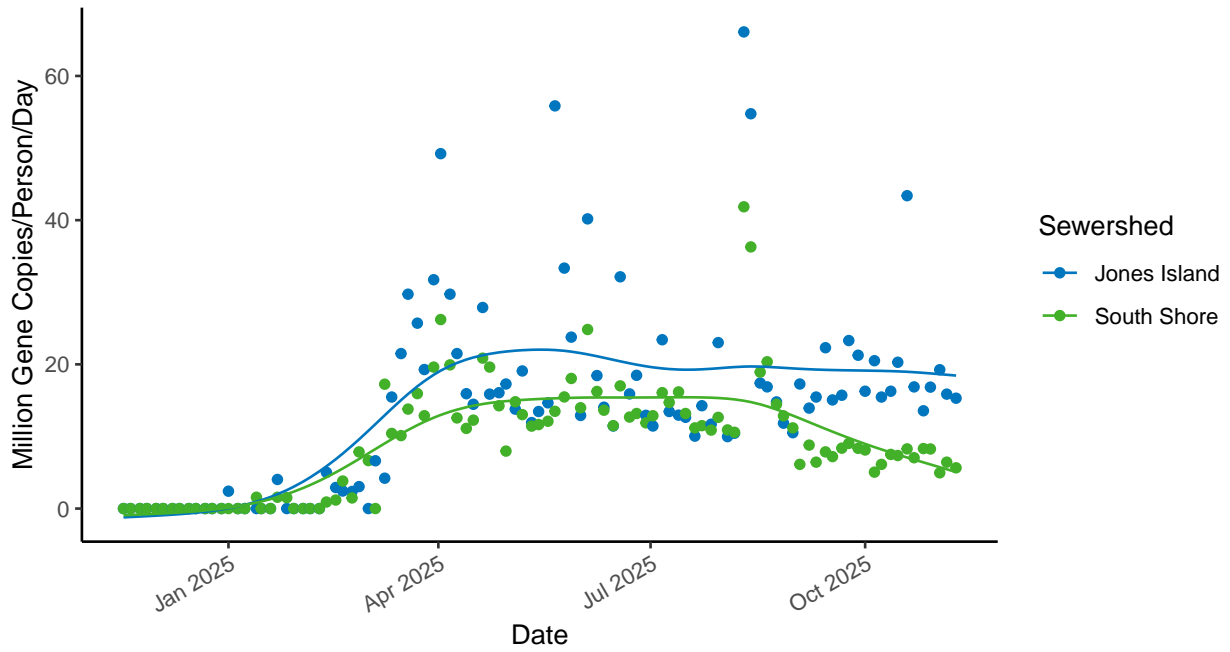
When interpreting wastewater surveillance data, the trend is the most important indicator of disease level in the population. Each of the plots below include a spline that represents the trend of illnesses.



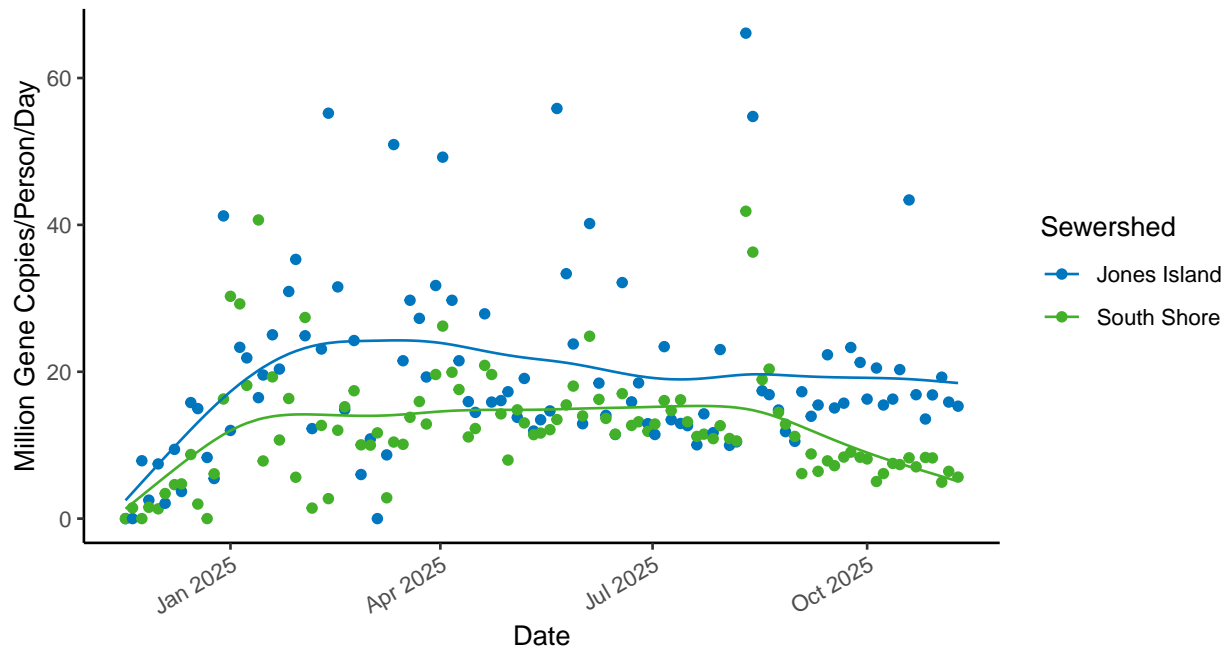
Flu A Trends in Milwaukee Sewershed



Flu B Trends in Milwaukee Sewershed



### RSV Trends in Milwaukee Sewershed



To see more interactive wastewater surveillance data, visit the MHD respiratory illness dashboard at <https://milwaukee.gov/wastewater>.

**Have feedback on the Milwaukee Respiratory Illness Report?** Send an email with the subject line "User Feedback" to [SURVNET@milwaukee.gov](mailto:SURVNET@milwaukee.gov).