



# Certificate of Appropriateness

**LIVING WITH HISTORY** Milwaukee Historic Preservation Commission/809 N. Broadway/PO Box 324/Milwaukee, WI 53201-0324/414-286-5712

**Property** 631 N. MILWAUKEE ST.

**Description of work** Install halo-lighted, pin-set letter sign (letters no more than 3" deep) on backer board above north half of storefront. Backer board will not exceed 40 square feet maximum permitted by zoning code. Install projecting internally illuminated star-shaped sign (5.5" in thickness) above door on south half of storefront. Sign will measure 35" w x 32" h.

**Date issued** 3/6/2008 PTS ID 48932 COA, signs above storefront

In accordance with the provisions of Section 308-81(9) of the Milwaukee Code of Ordinances, the Milwaukee Historic Preservation Commission has issued a certificate of appropriateness for the work listed above. The work was found to be consistent with preservation guidelines. The following conditions apply to this certificate of appropriateness:

All work will be done according to attached drawings and specifications. Backer board for wall sign will cover the two holes in the tile wall above the storefront windows. The projecting sign on the south half of the storefront will be attached to a new, recessed panel above the entry door. The existing panel above the door will be removed and replaced under specifications and drawings approved under a separate COA for storefront alterations.

All work must be done in a craftsman-like manner, and must be completed within one year of the date this certificate was issued. Staff must approve any changes or additions to this certificate before work begins. Work that is not completed in accordance with this certificate may be subject to correction orders or citations. If you require technical assistance, please contact Paul Jakubovich of the Historic Preservation staff as follows: Phone: (414) 286-5712 Fax: (414) 286-0232 E-mail: [pjakub@milwaukee.gov](mailto:pjakub@milwaukee.gov).

If permits are required, you are responsible for obtaining them from the Milwaukee Development Center. If you have questions about permit requirements, please consult the Development Center's web site, [www.mkedcd.org/build](http://www.mkedcd.org/build), or call (414) 286-8210 or 8211.

City of Milwaukee Historic Preservation Staff

Copies to: Development Center, Ald. Robert Bauman, Contractor David Moore, Inspector Bill Richter (286-2518)



End View



Side View

Projecting sign above door on south half of storefront Type A sign with letters made of solid aluminum. Cabinet to be shaped like a star. Face to have a sandblasted appearance.



Existing Wall

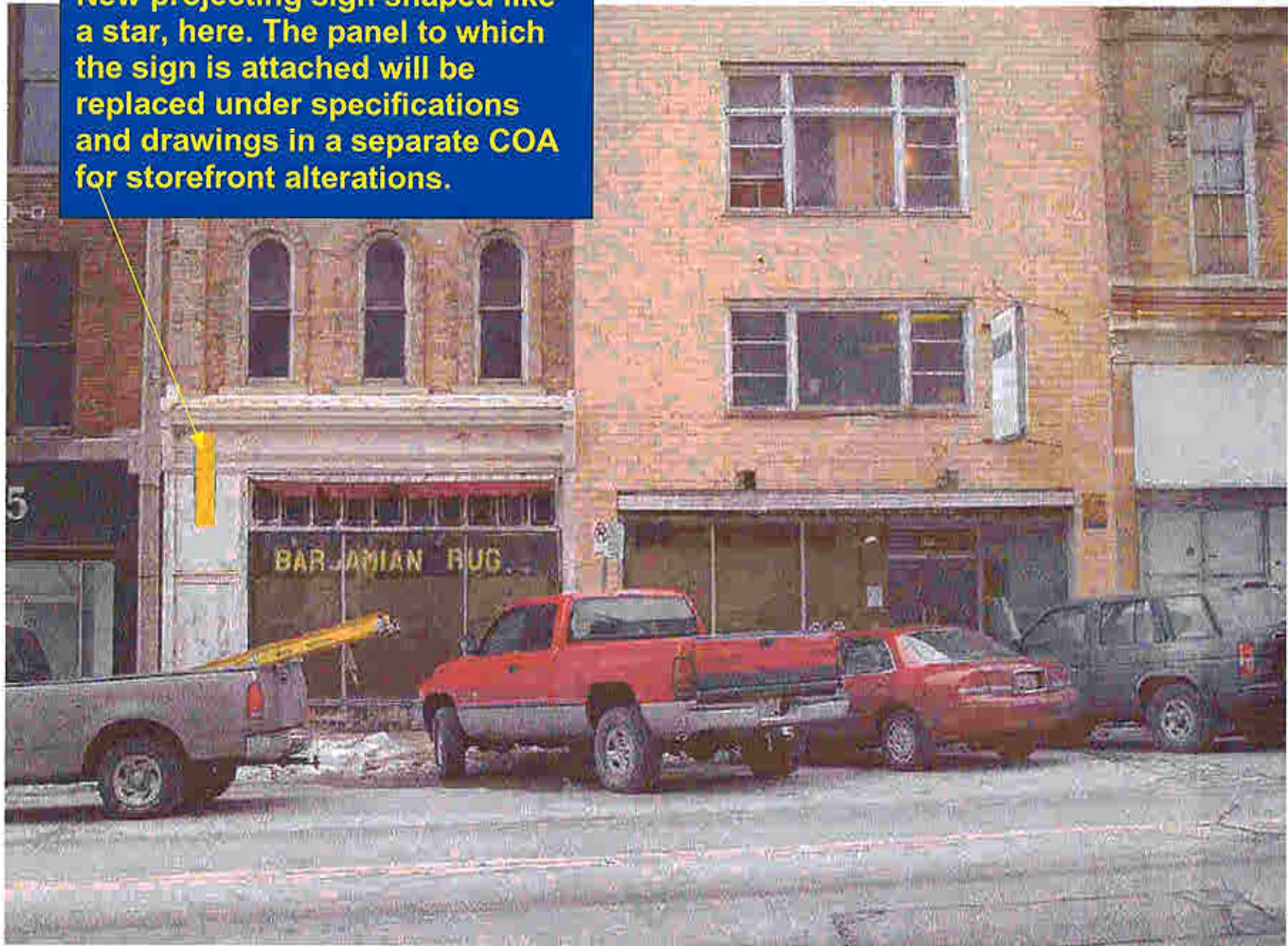
**So-Lite**

1100 S. 5th St. Milwaukee, WI 53204  
 414-645-9850 Fax 414-645-6520  
 sol@esigns.com

CUSTOMER: Star Bar	LOCATION:	SALESMAN: One Way Dave MOORE	CUSTOMER APPROVAL:	DATE:
SCALE: 1/2" = 1'	SKETCH# Star Bar	DATE: 03/05/08	LANDLORD APPROVAL:	DATE:

This artwork is the sole property of So-Lite Neon Sign Co. Any Ideas and concepts contained in this original drawing may not be reproduced in whole or part without written permission.  
 All colors are representational only, for actual color matches, refer to specific material samples and color charts.

**New projecting sign shaped like a star, here. The panel to which the sign is attached will be replaced under specifications and drawings in a separate COA for storefront alterations.**

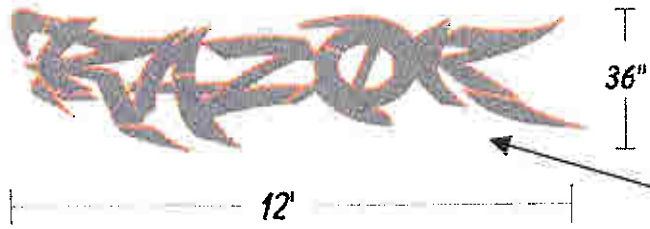




Remove existing projecting sign and patch mounting holes to match the color and texture of the masonry.

Backer board will be installed to cover the two large holes in the masonry wall. Backer board will have a modest contrast with the existing masonry

Install new halo-lighted, pin-set letter sign with backer board (total area not to exceed 40 square feet per zoning code).



Dimensions of sign without back board.