



# Certificate of Appropriateness

LIVING WITH HISTORY

Milwaukee Historic Preservation Commission/809 N. Broadway/PO Box 324/Milwaukee, WI 53201-0324/414-286-5712

**Property** 1701 N. HUMBOLDT AV.  
**Description of work** Repair existing retaining wall and patch asphalt paving and re-stripe.  
**Date issued** 10/9/2009 PTS ID 55312 COA-retaining wall final revision

In accordance with the provisions of Section 308-81(9) of the Milwaukee Code of Ordinances, the Milwaukee Historic Preservation Commission has issued a certificate of appropriateness for the work listed above. The work was found to be consistent with preservation guidelines. The following conditions apply to this certificate of appropriateness:

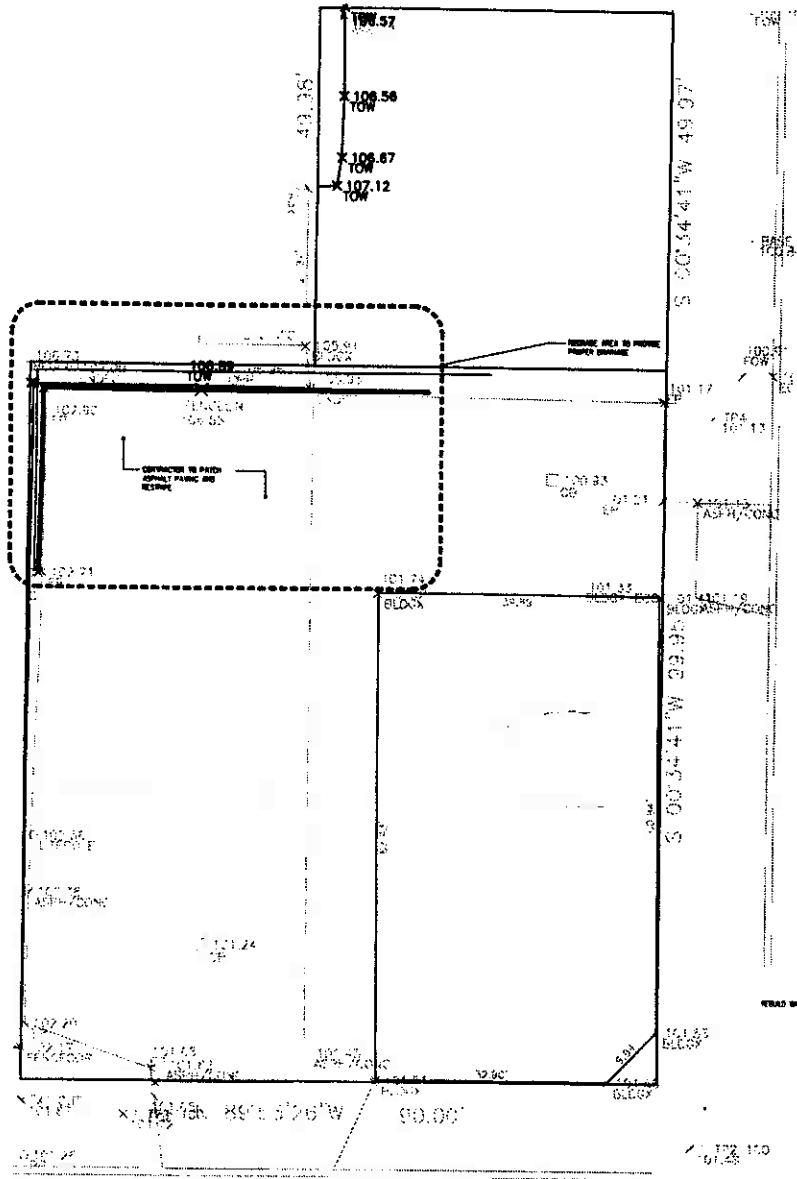
**Damaged timbers shall be replaced with like materials. All work shall coincide with submitted , approved and attached drawing.**

All work must be done in a craftsman-like manner, and must be completed within one year of the date this certificate was issued. **Staff must approve any changes or additions to this certificate before work begins. Work that is not completed in accordance with this certificate may be subject to correction orders or citations.** If you require technical assistance, please contact Carlen Hatala of the Historic Preservation staff as follows: Phone: (414) 286-5722 Fax: (414) 286-0232 E-mail: [chatal@milwaukee.gov](mailto:chatal@milwaukee.gov).

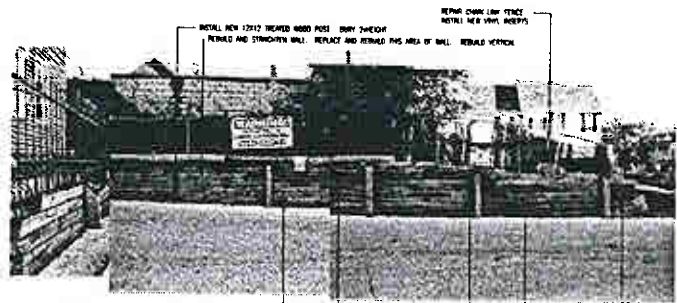
If permits are required, you are responsible for obtaining them from the Milwaukee Development Center. If you have questions about permit requirements, please consult the Development Center's web site, [www.mkedcd.org/build](http://www.mkedcd.org/build), or call (414) 286-8210 or 8211.

Carlen Hatala  
City of Milwaukee Historic Preservation

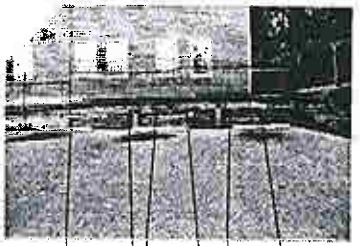
Copies to: Development Center, Ald. Nik Kovac, Contractor , Inspector Jim Friedrichs (286-5982)



1 SITE PLAN PHASE 1  
Scale: 1/8"=1'-0"



2 VIEW NORTH AT RETAINING WALL  
Scale: 1/8"=1'-0"



3 VIEW OF WEST RETAINING WALL  
Scale: 1/8"=1'-0"



4 VIEW LOOKING EAST ALONG RETAINING WALL  
Scale: 1/8"=1'-0"

Repairs to Existing Retaining Wall at  
CON APPLIANCES  
1701-1719 North Humboldt Avenue  
Milwaukee, Wisconsin 53202



Send a photograph to  
224 West Wisconsin Avenue  
Milwaukee, WI 53233  
phone 414-224-1111  
fax 414-224-1112  
email: m3@ml-3.com  
web: www.ml-3.com



10-08-08  
07-16-08  
12-08-08  
CITY REVIEW SET  
Sheet Number  
PLANS AND ELEVATIONS

A1

Date 11-20-08  
Project Number 073003



# Certificate of Appropriateness

**LIVING WITH HISTORY**

Milwaukee Historic Preservation Commission/809 N. Broadway/PO Box 324/Milwaukee, WI 53201-0324/414-286-5712


**Property** 1701 N. HUMBOLDT AV.  
**Description of work** Install new rusticated, poured concrete retaining wall and wood fence at northwest corner of the existing parking lot. Existing dilapidated railroad tie retaining wall at that same location to be removed. Wood fence will be painted or stained to protect it from the weather.  
**Date issued** 1/13/2009 PTS ID 55312 COA, Replace Retaining Wall

In accordance with the provisions of Section 308-81(9) of the Milwaukee Code of Ordinances, the Milwaukee Historic Preservation Commission has issued a certificate of appropriateness for the work listed above. The work was found to be consistent with preservation guidelines. The following conditions apply to this certificate of appropriateness:

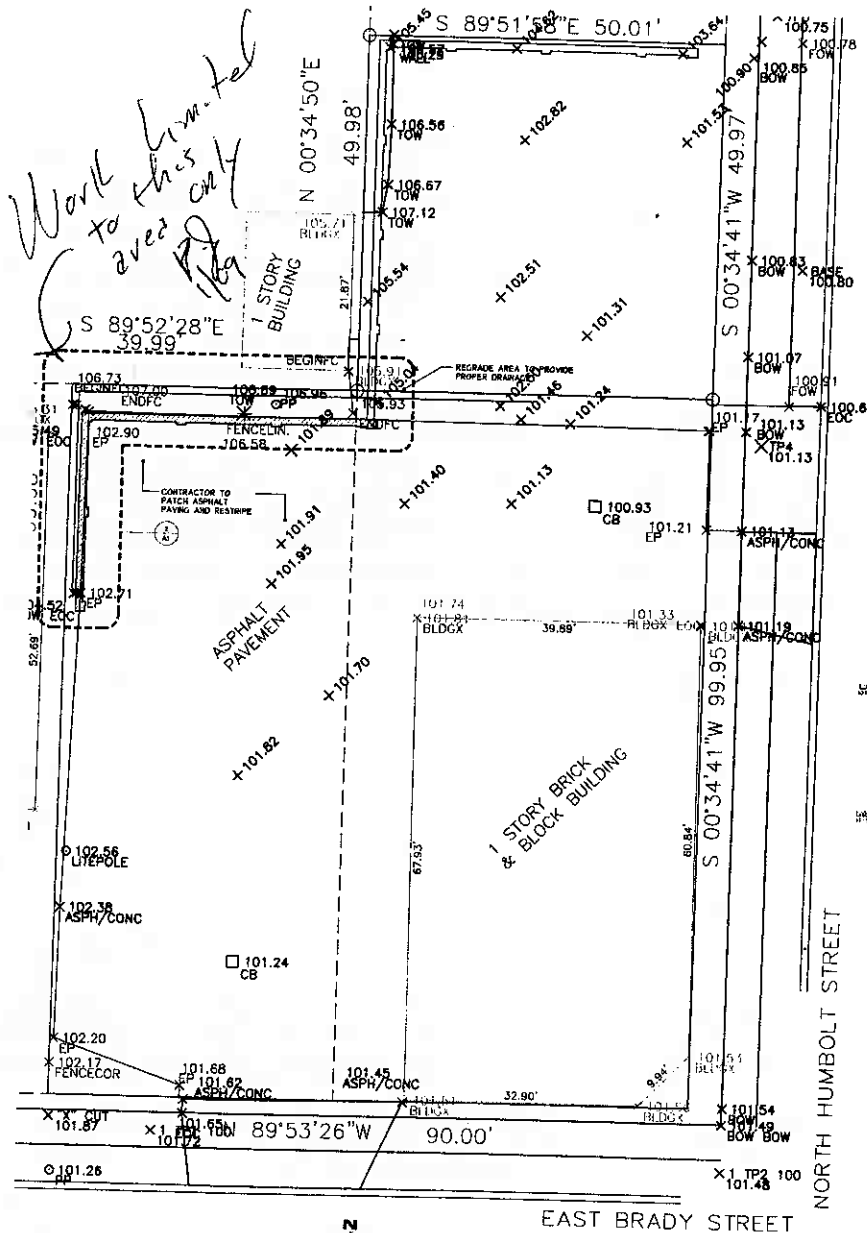
All work will be done according to attached drawings. Installation of new wall will be limited to the area shown on the site plan only. Any further extension of wall and fence will require HPC approval.

All work must be done in a craftsman-like manner, and must be completed within one year of the date this certificate was issued. Staff must approve any changes or additions to this certificate before work begins. Work that is not completed in accordance with this certificate may be subject to correction orders or citations. If you require technical assistance, please contact Paul Jakubovich of the Historic Preservation staff as follows: Phone: (414) 286-5712 Fax: (414) 286-0232 E-mail: [pjakub@milwaukee.gov](mailto:pjakub@milwaukee.gov).

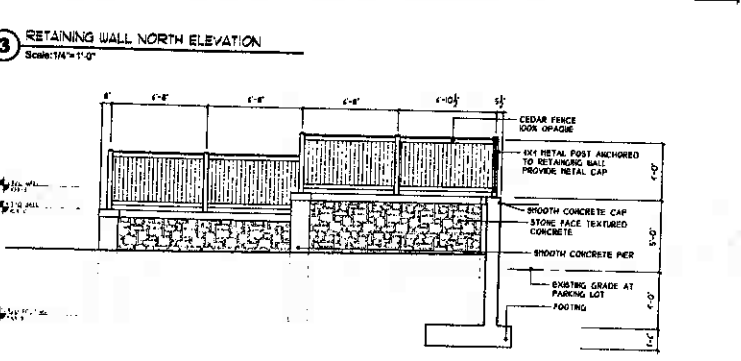
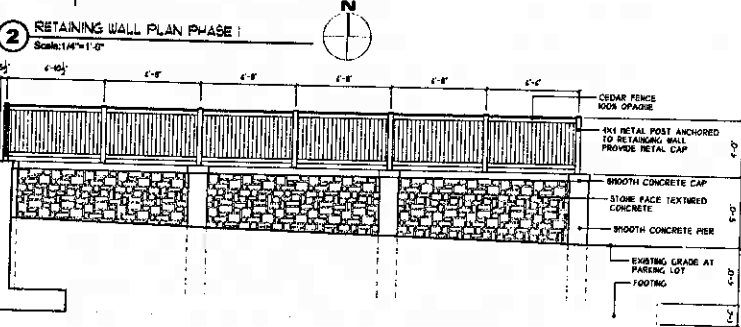
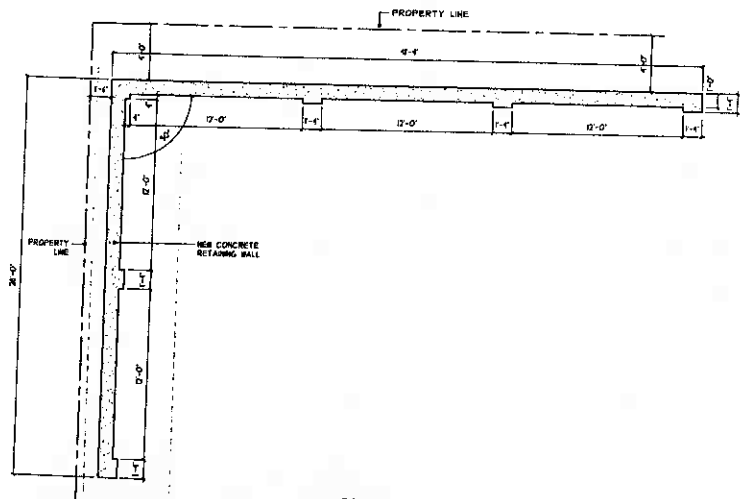
If permits are required, you are responsible for obtaining them from the Milwaukee Development Center. If you have questions about permit requirements, please consult the Development Center's web site, [www.mkedcd.org/build](http://www.mkedcd.org/build), or call (414) 286-8210 or 8211.

  
Paul Jakubovich  
City of Milwaukee Historic Preservation Staff

Copies to: Development Center, Ald. Nik Kovac, Inspector Jim Friedrichs (286-5982)



1 SITE PLAN PHASE I  
Scale: 1/8" = 1'-0"



New Retaining Wall at  
COIN APPLIANCES  
1701-1719 North Humboldt Avenue  
Milwaukee, Wisconsin 53202



JOHN W. JEFFERSON, II ARCHITECT, INC.  
220 WEST WASHINGTON AVENUE  
SUITE 1010  
MILWAUKEE WISCONSIN 53202  
PHONE 414-221-1141  
FAX 414-727-1142  
EMAIL jjeff@jw-j.com  
WWW.JW-J.COM

12-09-08  
CITY REVIEW SET  
Sheet Number  
PLANS AND ELEVATIONS  
PHASE I

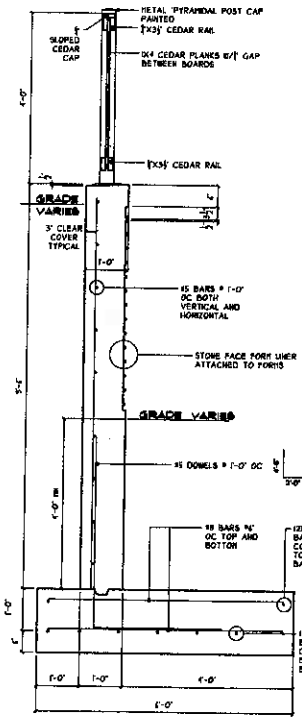
A1

Date 11-20-08  
Project Number 073003

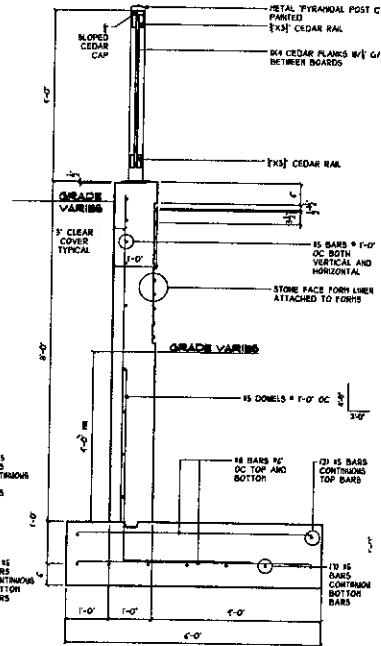
New Retaining Wall  
at  
**COIN APPLIANCES**  
1701-1719 North Humboldt Avenue  
Milwaukee, Wisconsin 53202



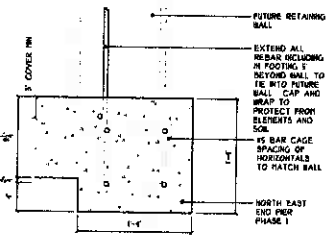
Russell G. Johnson, P.A. Architect, Inc.  
228 West Wisconsin Avenue  
Suite 1010  
Milwaukee Wisconsin 53202  
phone 414-727-1141  
fax 414-727-1142  
email russ@rj-3.com  
web www.rj-3.com



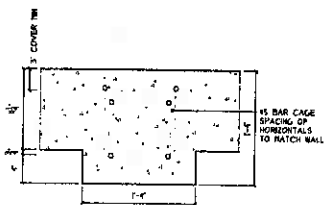
**1** RETAINING WALL SECTION  
Scale: 3/4"=1'-0"



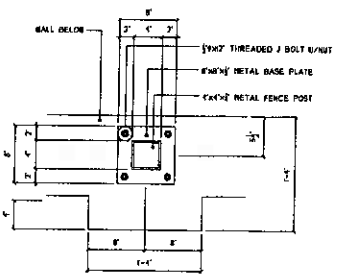
**2** RETAINING WALL SECTION  
Scale: 3/4"=1'-0"



**6** CORNER DETAIL  
Scale: 1 1/2"=1'-0"



**7** PIER DETAIL  
Scale: 1 1/2"=1'-0"



**8** FENCE POST DETAIL  
Scale: 1 1/2"=1'-0"

1 12-28-08  
**CITY REVIEW SET**  
Sheet Number  
SECTIONS AND DETAILS

**A3**

Date 11-20-08  
Project Number 073003

## DIVISION 1-CONDITIONS OF THE CONTRACT

(Applies to all Contractors)

### SECTION 01732 - SELECTIVE DEMOLITION

1. SECTION REQUIREMENTS
  - A. UNLESS OTHERWISE INDICATED, DEMOLISHED MATERIALS BECOME CONTRACTOR'S PROPERTY.
  - B. REMOVE FROM PROJECT.
  - C. ITEMS INDICATED TO BE REMOVED AND SALVAGED REMAIN OWNER'S PROPERTY. REMOVE, CLEAR AND DELIVER TO OWNER'S DESIGNATED STORAGE AREA.
  - D. COMPLY WITH EPA REGULATIONS AND DISPOSAL REGULATIONS OF AUTHORITIES HAVING JURISDICTION.
  - E. IT IS NOT EXPECTED THAT HAZARDOUS MATERIALS WILL BE ENCOUNTERED IN THE WORK. IF MATERIALS SUSPECTED OF CONTAINING HAZARDOUS MATERIALS ARE ENCOUNTERED, DO NOT DISTURB. IMMEDIATELY NOTIFY ARCHITECT AND OWNER. HAZARDOUS MATERIALS WILL BE REMOVED BY OWNER.
2. DEMOLITION
  - A. MAINTAIN AND PROTECT EXISTING UTILITIES TO REMAIN IN SERVICE BEFORE PROCEEDING WITH DEMOLITION. PROVIDING BYPASS CONNECTIONS TO OTHER PARTS OF THE BUILDING.
  - B. LOCATE, IDENTIFY, SHUT OFF, DISCONNECT, AND CAP OFF UTILITY SERVICES TO BE DEMOLISHED.
  - C. CONDUCT DEMOLITION OPERATIONS AND REMOVE DEBRIS TO PREVENT HARM TO PEOPLE AND DAMAGE TO ADJACENT BUILDINGS AND SITE IMPROVEMENTS.
  - D. PROVIDE AND MAINTAIN SHORING, BRACING, OR STRUCTURAL SUPPORT TO PRESERVE BUILDING STABILITY AND PREVENT INVERTMENT, SETTLEMENT, OR COLLAPSE.
  - E. PROTECT BUILDING STRUCTURE AND INTERIOR FROM WEATHER AND WATER LEAKAGE AND DAMAGE.
  - F. PROTECT WALLS, CEILING, FLOOR, AND EXPOSED FINISHES THAT ARE TO REMAIN.
  - G. NEATLY CUT OPENINGS AND HOLES PLUMB, SQUARE AND TRUE TO DIMENSIONS REQUIRED. USE CUTTING METHODS LEAST LIKELY TO DAMAGE CONSTRUCTION TO REMAIN OR ADJOINING CONSTRUCTION.
  - H. PROMPTLY PATCH AND REPAIR HOLES AND DAMAGED SURFACES OF BUILDING CAUSED BY DEMOLITION. RESTORE EXPOSED FINISHES OF PATCHED AREAS AND EXTEND FINISH RESTORATION INTO ADJOINING CONSTRUCTION.
  - I. PROMPTLY REMOVE DEMOLISHED MATERIALS FROM OWNER'S PROPERTY AND LEGALLY DISPOSE OF THEM. DO NOT BURN DEMOLISHED MATERIALS.

END OF SECTION 01732

## DIVISION 2-SITE CONSTRUCTION

### SECTION 02000 - EXCAVATION

1. SECTION INCLUDES EXCAVATION FOR NEW FOUNDATIONS AND GRADING OF PARKING LOT.
- A. UNAUTHORIZED EXCAVATION OR MOVING MATERIALS BEYOND INDICATED SUBGRADE ELEVATIONS OR DIMENSIONS WITHOUT DIRECTION BY ARCHITECT. UNAUTHORIZED EXCAVATION AND REMEDIAL WORK SHALL BE AT CONTRACTOR'S EXPENSE.
- B. DO NOT INTERRUPT EXISTING UTILITIES SERVING FACILITIES OCCUPIED BY OWNER. PROVIDE TEMPORARY UTILITY SERVICES.
2. MATERIALS
  - A. UNSATURATED SOIL: ASTM D 2481 SOIL CLASSIFICATION GROUPS GC, SC, ML, NH, CL, CH, OL, OH, and PL.
  - B. BACKFILL AND FILL: SATISFACTORY SOIL MATERIALS.
  - C. SUBGRADE: NATURALLY OR ARTIFICIALLY GRADED TEXTURE OF NATURAL OR CRUSHED GRAVEL, CRUSHED STONE, AND NATURAL OR CRUSHED SAND, ASTM D 2154, WITH AT LEAST 95 PERCENT PASSING A 1/2-INCH SIEVE AND NOT MORE THAN 8 PERCENT PASSING A NO. 200 SIEVE.
  - D. BEDDING: SUBGRADE MATERIALS WITH 100 PERCENT PASSING A 1-INCH SIEVE AND NOT MORE THAN 8 PERCENT PASSING A NO. 200 SIEVE.
3. EARTHWORK
  - A. PROTECT SUBGRADES AND FOUNDATION SOILS FROM SOFTENING AND DAMAGE BY WATER, FREEZING TEMPERATURES, OR FROST.
  - B. EXPLOSIVES: DO NOT USE EXPLOSIVES.
  - C. EXCAVATE TO SUBGRADE ELEVATIONS REGARDLESS OF CHARACTER OF MATERIALS AND OBSTRUCTIONS ENCOUNTERED.
  - D. EXCAVATE FOR STRUCTURES, BUILDING SLABS, PAVEMENTS, AND BALCONIES. TRIM SUBGRADES TO REQUIRED LINES AND GRADES.
  - E. PLOW STRIP OR BREAK UP SLOPED SURFACES STEEPER THAN 1 VERTICAL TO 4 HORIZONTAL TO RECEIVE FILL.
  - F. WHEN SUBGRADE OR EXISTING GROUND SURFACE TO RECEIVE FILL HAS A DENSITY LESS THAN THAT REQUIRED FOR FILL, BREAK UP GROUND SURFACE, PLASTER, MOISTURE-CONDITION OR AERATE SOIL, AND RECOMPACT.
  - G. PLACE BACKFILL AND FILL IN LAYERS NOT MORE THAN 8 INCHES IN LOOSE DEPTH AT OPTIMUM MOISTURE CONTENT. COMPACT EACH LAYER UNDER STRUCTURES, BUILDING SLABS, PAVEMENTS, AND BALCONIES TO 95 PERCENT OF MAXIMUM DRY UNIT WEIGHT ACCORDING TO ASTM D 1586, ELSEWHERE TO 90 PERCENT.
  - H. GRADE AREAS TO A SMOOTH SURFACE TO CROSS SECTIONS, LINES, AND ELEVATIONS INDICATED. GRADE LAINS, BALCONIES, AND IMPAVED SUBGRADES TO TOLERANCES OF PLUS OR MINUS 1/4 INCH AND PAVEMENTS AND AREAS WITHIN BUILDING LINES TO PLUS OR MINUS 1/2 INCH.
  - I. UNDER PAVEMENTS AND BALCONIES, PLACE SUBBASE COURSE MATERIAL OR PREPARED SUBGRADES AND COMPACT AT OPTIMUM MOISTURE CONTENT TO REQUIRED GRADES, LINES, CROSS SECTIONS, AND THICKNESSES.
  - J. UNDER SLABS-ON-GRADE, PLACE DRAINAGE FILL OR PREPARED SUBGRADE AND COMPACT TO REQUIRED CROSS SECTION AND THICKNESS.
  - K. ALL TESTS TO BE MADE IN FIELD AND TEST EACH SUBGRADE AND EACH FILL OR BACKFILL LAYER AND VERIFY COMPLIANCE WITH REQUIREMENTS.
  - L. REMOVE SURPLUS SATISFACTORY SOIL AND BASTE MATERIAL, INCLUDING UNSATURATED SOIL, TRASH, AND DEBRIS, AND LEGALLY DISPOSE OF IT OFF OWNER'S PROPERTY.

### SECTION 02010 - HOT-HEAT ASPHALT PAVING

1. SECTION INCLUDES PAVING FOR PARKING LOT.
- A. ASPHALT-PAVING PUBLICATION: COMPLY WITH A1 J15-22, "CONSTRUCTION OF HOT-HEAT ASPHALT PAVEMENTS" UNLESS MORE STRINGENT REQUIREMENTS ARE INDICATED.
2. MATERIALS
  - A. HOT-HEAT ASPHALT: DENSE, HOT-LAD, HOT-HEAT ASPHALT PLANT MIXES DESIGNED ACCORDING TO PROCEDURES IN A1 J15-22, "HOT-HEAT ASPHALT PLANT MIXES FOR ASPHALT CONCRETE AND OTHER HOT-HEAT TYPES".
  - B. TACK COAT: ASTM D 317, ENHANCED ASPHALT OR ASTM D 2351, CATIONIC ENHANCED ASPHALT. SLOW SETTING, OILY IN NATURE, OF SUITABLE GRADE AND CONSISTENCY FOR APPLICATION.
  - C. PAVEMENT-FINISHING PAINT: LATEX, WATERBORNE EMULSION, LEAD AND CHROMATE FREE, READY MIXED, COMPLYING WITH PS TT-P-952, WITH DRYING TIME OF LESS THAN 13 [45] MINUTES.
    1. COLOR: WHITE.
  - D. ACCESSIBLE SURFACES: PROVIDE PARKING SIGNAGE MEETING ANSH 87 AND THE IBC STATE OF WISCONSIN ENROLLED CODE REQUIREMENTS.
  - E. WHEEL STOPS: PRECAST, AIR-ENTRAINED CONCRETE, 2500-PSI MINIMUM COMPRESSIVE STRENGTH, 4-1/2 INCHES HIGH BY 3 INCHES WIDE BY 12 INCHES LONG. PROVIDE CHAMFERED CORNERS AND DRAINAGE GROTS ON UNDERSIDE AND HOLES FOR ANCHORING TO SUBSTRATE.
3. PAVING
  - A. TACK COAT EXISTING ASPHALT OR CONCRETE SURFACES AND ALLOW TACK COAT TO CURE UNDISTURBED.
  - B. PLACE HOT-HEAT ASPHALT TO REQUIRED GRADE, CROSS SECTION AND THICKNESS. PROMPTLY CORRECT SURFACE IRREGULARITIES IN PAVING COURSE.
  - C. SPREAD MIX AT MINIMUM TEMPERATURE OF 250 DEG F.
  - D. BEGIN COMPACTION AS SOON AS PLACED HOT-HEAT ASPHALT PAVING WILL BEAR ROLLER WEIGHT WITHOUT EXCESSIVE DISPLACEMENT. COMPACT HOT-HEAT ASPHALT WITH HOT, HAND TAMPERS OR VIBRATORY-PLATE COMPACTORS IN AREAS UNACCESSIBLE TO ROLLERS. COMPLETE COMPACTION BEFORE MIX TEMPERATURE COOLS TO 185 DEG F.
  - E. COMPLETE BREAKDOWN OR INITIAL ROLLING IMMEDIATELY AFTER ROLLING JOINTS AND OUTSIDE EDGE. EXAMINE SURFACE IMMEDIATELY AFTER BREAKDOWN ROLLING FOR INDICATED CROWN, GRADE, AND SMOOTHNESS.
  - F. BEGIN INTERMEDIATE ROLLING IMMEDIATELY AFTER BREAKDOWN ROLLING WHILE HOT-HEAT ASPHALT IS STILL HOT ENOUGH TO ACHIEVE SPECIFIED DENSITY. CONTINUE ROLLING UNTIL HOT-HEAT ASPHALT COURSE HAS BEEN IMPROPERLY COMPACTION TO 92 PERCENT OF REFERENCE MAXIMUM THEORETICAL DENSITY ACCORDING TO ASTM D 2044.
  - G. FRESH ROLL PAVED SURFACES TO REMOVE ROLLER MARKS WHILE HOT-HEAT ASPHALT IS STILL BARE.
  - H. REMOVE AND RESTORE PAVED AREAS THAT ARE DEFECTIVE OR CONTAMINATED.
  - I. APPLY PAVEMENT-FINISHING PAINT WITH MECHANICAL EQUIPMENT TO A MINIMUM NET FILL THICKNESS OF 15 MILS.

## DIVISION 3-CONCRETE

### SECTION 03331 - CAST-IN-PLACE ARCHITECTURAL CONCRETE

1. QUALITY ASSURANCE
    - A. INSTALLER QUALIFICATION: A QUALIFIED CONTRACTOR WHO HAS SPECIALIZED IN INSTALLING CAST-IN-PLACE ARCHITECTURAL CONCRETE SIMILAR IN MATERIAL, DESIGN AND EXTENT TO THAT INDICATED FOR THIS PROJECT.
    - B. CONCRETE MANUFACTURER QUALIFICATION: A FIRM EXPERIENCED IN MANUFACTURING READY-MIXED CONCRETE PRODUCTS COMPLYING WITH ASTM C1304 REQUIREMENTS FOR PRODUCTION FACILITIES AND EQUIPMENT.
    - C. ACT STANDARDS: COMPLY WITH ACI 308.1, "SPECIFICATION FOR CAST-IN-PLACE ARCHITECTURAL CONCRETE"; ACI 308.2R, "SPECIFICATION FOR STRUCTURAL CONCRETE"; AND ACI 308.3R, "SPECIFICATIONS FOR TOLERANCES FOR CONCRETE CONSTRUCTION AND MATERIALS," UNLESS MORE STRINGENT PROVISIONS ARE INDICATED.
  2. STEEL REINFORCEMENT:
    1. REINFORCING BARS: ASTM A616/A617M, GRADE 60 (GRADE 70), DEFORMED.
    2. PLAIN-STEEL WIRE: ASTM A632, AS DRAWN.
    3. PLAIN-STEEL WELDED WIRE FABRIC: ASTM A954, FABRICATED FROM AS-DRAWN STEEL WIRE INTO FLAT SHEETS.
    4. DEFORMED-STEEL WELDED WIRE FABRIC: ASTM A951, FLAT SHEET.
  3. FORM-FACING MATERIALS
    - A. FORM LINERS: UNITS OF FACE DESIGN, TEXTURE, ARRANGEMENT, AND CONFIGURATION INDICATED. PROVIDE SOLID BACKING AND FORM SUPPORTS TO ENSURE THAT FORM LINERS REMAIN IN PLACE DURING CONCRETING. FURNISH WITH MANUFACTURER'S RECOMMENDED LIQUID-RELEASE AGENT THAT WILL NOT BOND WITH STAIN, OR ADVERSELY AFFECT CONCRETE SURFACES AND WILL NOT IMPAIR SUBSEQUENT SURFACE TREATMENTS OF CONCRETE.
    - B. FORM LINERS: "ERIC FORMERS" PATTERN 529 "RE ASHLAR OR EQUAL.
    - C. FORM TIES: FACTORY-FABRICATED, TIES DESIGNED TO RESIST LATERAL PRESSURE OF FRESH CONCRETE ON FORMS AND TO PREVENT SPALLING OF CONCRETE ON REMOVAL.
    - D. BAR SUPPORTS: BOLSTERS, CHAIRS, SPACERS, AND OTHER DEVICES FOR SPACING, SUPPORTING, AND FASTENING REINFORCING BARS AND WELDED WIRE FABRIC IN PLACE. THESE LEGS OF WIRE BAR SUPPORTS CONTACT FORMS. USE ALL-PLASTIC BAR SUPPORTS.
  4. CONCRETE MATERIALS
    - A. PORTLAND CEMENT: ASTM C150, TYPE 1 GRAY COLOR OF SAME TYPE, BRAND, AND SOURCE FOR ENTIRE PROJECT.
    - B. NORMAL-WEIGHT COARSE AGGREGATE: ASTM C33, FROM THE SAME SOURCE FOR ENTIRE PROJECT, AND AS FOLLOWS:
      1. NOMINAL MAXIMUM AGGREGATE SIZE: 3/8 INCH.
      2. GRADATION: UNIFORMLY GRADED.
      3. NORMAL-WEIGHT FINE AGGREGATE: ASTM C33, MANUFACTURED OR NATURAL SAND FROM THE SAME SOURCE FOR ENTIRE PROJECT.
    - C. WATER: POTABLE, COMPLYING WITH ASTM C1304 EXCEPT FREE OF SOFT WATER FROM FRESH BASHOUT OPERATIONS.
    - D. CONCRETE MIXES
      1. PREPARE DESIGN MIXES FOR EACH TYPE AND STRENGTH OF CAST-IN-PLACE ARCHITECTURAL CONCRETE DETERMINED BY EITHER LABORATORY TRIAL MIX OR FIELD TEST DATA BASED. PROPORTION CONCRETE ACCORDING TO ACI 308.1 AND AS FOLLOWS:
        1. COMPRESSIVE STRENGTH (28 DAYS): 5000 PSI
        2. MAXIMUM SLUMP: 3 INCHES
        3. AIR CONTENT: 2 TO 4 PERCENT.
  5. CONCRETE FORMING
    - A. READY-MIXED CONCRETE: MEASURE, BATCH, MIX, AND DELIVER CAST-IN-PLACE ARCHITECTURAL CONCRETE ACCORDING TO ASTM C1304 AND FURNISH BATCH TICKET INFORMATION.
      1. WHEN AIR TEMPERATURE IS BETWEEN 85 AND 50 DEGREE F (30 AND 32 DEGREE C), REDUCE MIXING AND DELIVERY TIME FROM 50 TO 75 MINUTES; WHEN AIR TEMPERATURE IS ABOVE 50 DEGREE F (10 DEGREE C), REDUCE MIXING AND DELIVERY TIME TO 60 MINUTES.
  6. FORMWORK
    - A. CHAMFER EXTERIOR CORNERS AND EDGES OF CAST-IN-PLACE ARCHITECTURAL CONCRETE.
    - B. CLEAN FORMS AND ADJACENT SURFACES TO RECEIVE CONCRETE.
    - C. SEAL FORM JOINTS AND PENETRATIONS AT FORM TIES WITH FORM JOINT TAPE OR FORM JOINT SEALANT TO PREVENT MOISTURE LEAKS.
    - D. PLACE FORM LINERS ACCURATELY TO PROVIDE FINISHED SURFACE TEXTURE INDICATED. PROVIDE SOLID BACKING AND ATTACH SECURELY TO PREVENT DEFLECTION AND STRETCHING IN HOT WEATHER. SEAL JOINTS OF FORM LINERS FROM BAGGING AND STRETCHING IN HOT WEATHER. SEAL JOINTS OF FORM LINERS WITH FORM-RELEASE AGENT.
  7. COMPLY WITH DRAWING'S SECTION "CAST-IN-PLACE CONCRETE" FOR FABRICATING AND INSTALLING STEEL REINFORCEMENT.
    1. SET WIRE TIES WITH ENDS DIRECTED INTO CONCRETE, NOT TOWARD EXPOSED CONCRETE SURFACES.
    2. REMOVE FORMS AND REUSING FORMS
      - A. FORMWORK FOR SIDES OF BEAMS, WALLS, COLUMNS, AND SIMILAR PARTS OF THE WORK, THAT DOES NOT SUPPORT WEIGHT OF CONCRETE MAY BE REMOVED AFTER RELATIVELY CURING AT NOT LESS THAN 50 DEGREE F (10 DEGREE C) FOR 24 HOURS AFTER PLACING CONCRETE.
      1. CUT OFF AND GRIND GLASS-FIBER-REINFORCED PLASTIC FORM TIES PLUMB WITH SURFACE OF CONCRETE.
    - B. LEAVE FORMWORK FOR BEAM JOISTS, JOISTS, SLABS, AND OTHER STRUCTURAL ELEMENTS, THAT SUPPORTS WEIGHT OF CONCRETE IN PLACE UNTIL CONCRETE HAS ACHIEVED 28-DAY DESIGN COMPRESSIVE STRENGTH. REMOVE FORMS ONLY IF SHORES HAVE BEEN ARRANGED TO PERMIT REMOVAL OF FORMS WITHOUT LOOSENING OR DISTURBING SHORES.
    - C. WHEN FORMS ARE RELEASED, CLEAN SURFACES, REMOVE PILING AND LANTANCE, AND TIGHTEN TO CLOSE JOINTS. ALIGN AND SECURE JOINTS TO AVOID OFFSETS. DO NOT USE PATCHED FORMS FOR ARCHITECTURAL CONCRETE SURFACES.
8. JOINTS
  - A. CONSTRUCTION JOINTS: INSTALL CONSTRUCTION JOINTS TRUE TO LINE WITH FACES PERPENDICULAR TO SURFACE PLANE OF CAST-IN-PLACE ARCHITECTURAL CONCRETE SO STRENGTH AND APPEARANCE OF CONCRETE ARE NOT IMPAIRED AT LOCATIONS INDICATED OR AS APPROVED BY ARCHITECT.
    1. PLACE JOINTS PERPENDICULAR TO MAIN REINFORCEMENT. CONTINUE REINFORCEMENT ACROSS CONSTRUCTION JOINTS, UNLESS OTHERWISE INDICATED.
  - B. CONCRETE PLACEMENT
    1. DO NOT ADD WATER TO CONCRETE DURING DELIVERY, AT PROJECT SITE, OR DURING PLACEMENT, UNLESS APPROVED BY ARCHITECT.
    2. DEPOSIT CONCRETE IN FORMS IN HORIZONTAL LAYERS NO DEEPER THAN 24 INCHES (600 MM) AND IN A MANNER TO AVOID INCLINED CONSTRUCTION JOINTS. PLACE EACH LAYER WHILE PRECEDING LAYER IS STILL PLASTIC TO AVOID COLD JOINTS.
      1. CONSOLIDATE PLACED CONCRETE WITH MECHANICAL VIBRATING EQUIPMENT. USE EQUIPMENT AND PROCEDURES FOR CONSOLIDATING CONCRETE RECOMMENDED BY ACI 308.1R.
      2. DO NOT USE VIBRATORS TO TRANSPORT CONCRETE INSIDE FORMS.
    3. COLD-WEATHER PLACEMENT: COMPLY WITH ACI 308.1R. PROTECT CONCRETE FROM PHYSICAL DAMAGE OR REDUCE STRENGTH THAT COULD BE CAUSED BY FROST, FREEZING ACTION, OR LOW TEMPERATURES.
    4. HOT-WEATHER PLACEMENT: PLACE CONCRETE ACCORDING TO RECOMMENDATIONS IN ACI 308.1R.
9. FINISHES, GENERAL
  - A. RELATED UNPAVED SURFACES: AT TOPS OF WALLS, HORIZONTAL OFFSETS, AND SLOPED SURFACES ADJACENT TO FORMED SURFACES, STRIKE OFF SMOOTH AND FINISH WITH A TEXTURE MATCHING ADJACENT FORMED SURFACES.
    1. CONTINUE FINAL SURFACE TREATMENT OF FORMED SURFACES IMPROVED ACROSS ADJACENT UNPAVED SURFACES, UNLESS OTHERWISE INDICATED.
  - B. FORM LINES FINISH: CAST PANEL AGAINST FORM LINERS PLACED, SECURED, AND SEALED OVER FORMWORK PANELS TO PRODUCE A TEXTURED SURFACE FREE OF POCKETS, STREAKS, AND HONEYCOMBS. PRODUCE A SURFACE APPEARANCE OF UNIFORM COLOR AND TEXTURE.
10. CONCRETE CURING
  - A. BEGIN CURING IMMEDIATELY AFTER REMOVING FORMS FROM CONCRETE. CURE BY ONE OF A COMBINATION OF MOISTURE CURING COMPOUND METHODS THAT WILL NOT DISCOLOR, OXIDIZE, OR STAIN CONCRETE.
11. FIELD QUALITY CONTROL
12. REPAIRS, PROTECTION, AND CLEANING
  - A. REPAIR AND CURE DAMAGED FINISHED SURFACES OF CAST-IN-PLACE ARCHITECTURAL CONCRETE WHEN APPROVED BY ARCHITECT. MATCH REPAIRS TO COLOR, TEXTURE, AND UNIFORMITY OF SURROUNDING SURFACES AND TO REPAIRS OR APPROVED OCCUPS.
    1. REMOVE AND REPLACE CAST-IN-PLACE ARCHITECTURAL CONCRETE THAT CANNOT BE REPAIRED AND CURED TO ARCHITECT'S APPROVAL.
  - B. PROTECT CORNERS, EDGES, AND SURFACES OF CAST-IN-PLACE ARCHITECTURAL CONCRETE FROM DAMAGE, USE GUARDS AND BARRICADES.

END OF SECTION 03331

New Retaining Wall  
at  
COIN APPLIANCES  
1701-1719 North Humboldt Avenue  
Milwaukee, Wisconsin 53202



russell e. lakomaba, architect, llc  
220 east wisconsin avenue  
suite 1010  
milwaukee wisconsin 53202  
phone 414-727-1141  
fax 414-727-1142  
email russ@rel-3.com  
web www.rel-3.com

12-09-08  
CITY REVIEW  
SET  
Sheet Number  
SPECIFICATIONS

A4

Date 11-20-08  
Project Number 073003