

BRADY STREET A.P.



Certificate of Appropriateness

LIVING WITH HISTORY

Milwaukee Historic Preservation Commission/809 N. Broadway/PO Box 324/Milwaukee, WI 53201-0324/414-286-5712

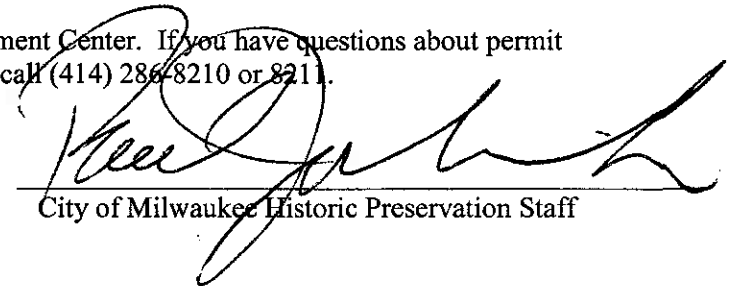
Property 1023 E. BRADY ST.
Description of work Change faces of existing, double-sided, internally illuminated cabinet type sign.
Date issued 11/30/2007 PTS ID 47433 COA, face change for existing cabinet sign

In accordance with the provisions of Section 308-81(9) of the Milwaukee Code of Ordinances, the Milwaukee Historic Preservation Commission has issued a certificate of appropriateness for the work listed above. The work was found to be consistent with preservation guidelines. The following conditions apply to this certificate of appropriateness:

All work will be done according to attached drawings. **NOTE:** The face change is allowed for a cabinet type, internally illuminated sign (Non type A) because it is a pre-existing condition and had not been abandoned. Any additional signage, including signage on storefront glass, must be reviewed and approved before installation.

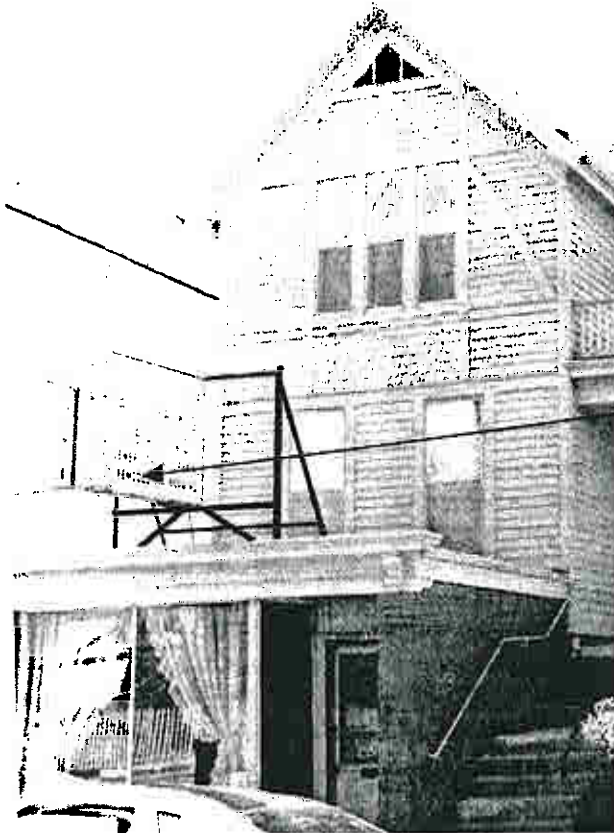
All work must be done in a craftsman-like manner, and must be completed within one year of the date this certificate was issued. Staff must approve any changes or additions to this certificate before work begins. Work that is not completed in accordance with this certificate may be subject to correction orders or citations. If you require technical assistance, please contact Paul Jakubovich of the Historic Preservation staff as follows: Phone: (414) 286-5712 Fax: (414) 286-0232 E-mail: pjakub@milwaukee.gov.

If permits are required, you are responsible for obtaining them from the Milwaukee Development Center. If you have questions about permit requirements, please consult the Development Center's web site, www.mkedcd.org/build, or call (414) 286-8210 or 8211.



 City of Milwaukee Historic Preservation Staff

Copies to: Development Center, Ald. Michael D'Amato; Nick Curich, plan examiner



Note: This COA is for face change only. Any other signage, including signage on glass, must be reviewed and approved before installation.

This face to be installed in existing cabinet sign