

Two subdivisions offer many advantages to prospective homebuyers:

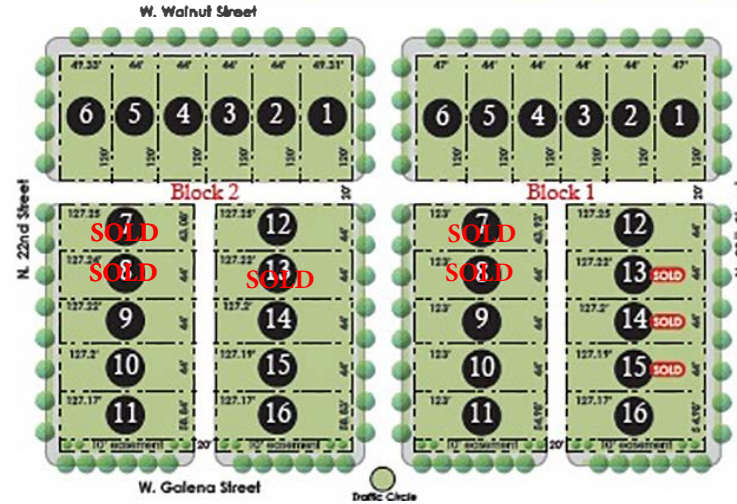
- Brand new construction in the heart of the city of Milwaukee
- Fully improved lots, including sewer water, lighting and sidewalks
- Shop and compare – affordable lot pricing means more house for your money!



Walnut Circle

milwaukee.gov/WalnutCircle

Great location and only a few minutes from downtown



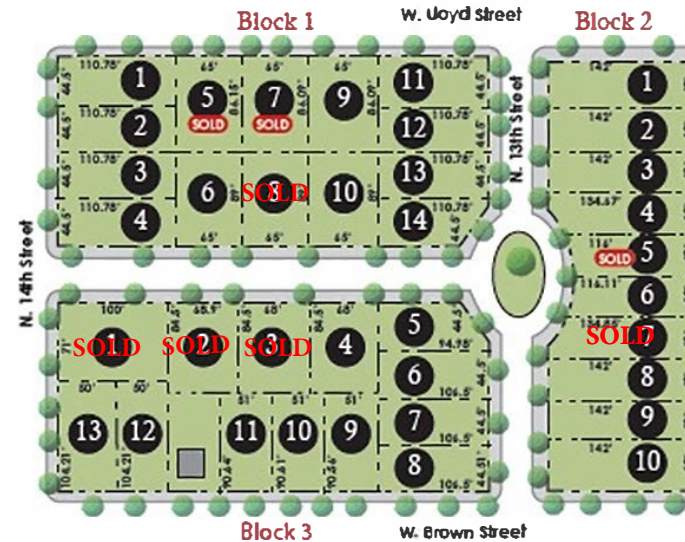
- Located at 20th & Walnut
- 24 lots currently available
- Adjacent to the original City Homes subdivision in a neighborhood that reflects pride of ownership and committed residents



Josey Heights

milwaukee.gov/JoseyHeights

The first and only “green” residential subdivision in the City



- Located at 12th & Lloyd
- 29 lots currently available
- Located in the Lindsay Heights neighborhood – home to millions of dollars of new investment and strong resident engagement