

# 2743 North 59<sup>th</sup> Street

Tax Key: 2060609000

Plat: 30636



Lot Size	Building Size	Zoning	Owner
4,880 ft <sup>2</sup>	2008 ft <sup>2</sup>	LB2	City of Milwaukee

Source: City Assessor's Database

## Historical References

1. The Wright's City Directories (1935-1990) and the Polk's City Directories (1993-2010), reviewed in five year increments, contain the following information for the project site:

Date	Comment
1935-1985	Residential
1970	Upholstery store
1975-2010	Tavern
2015	No listing

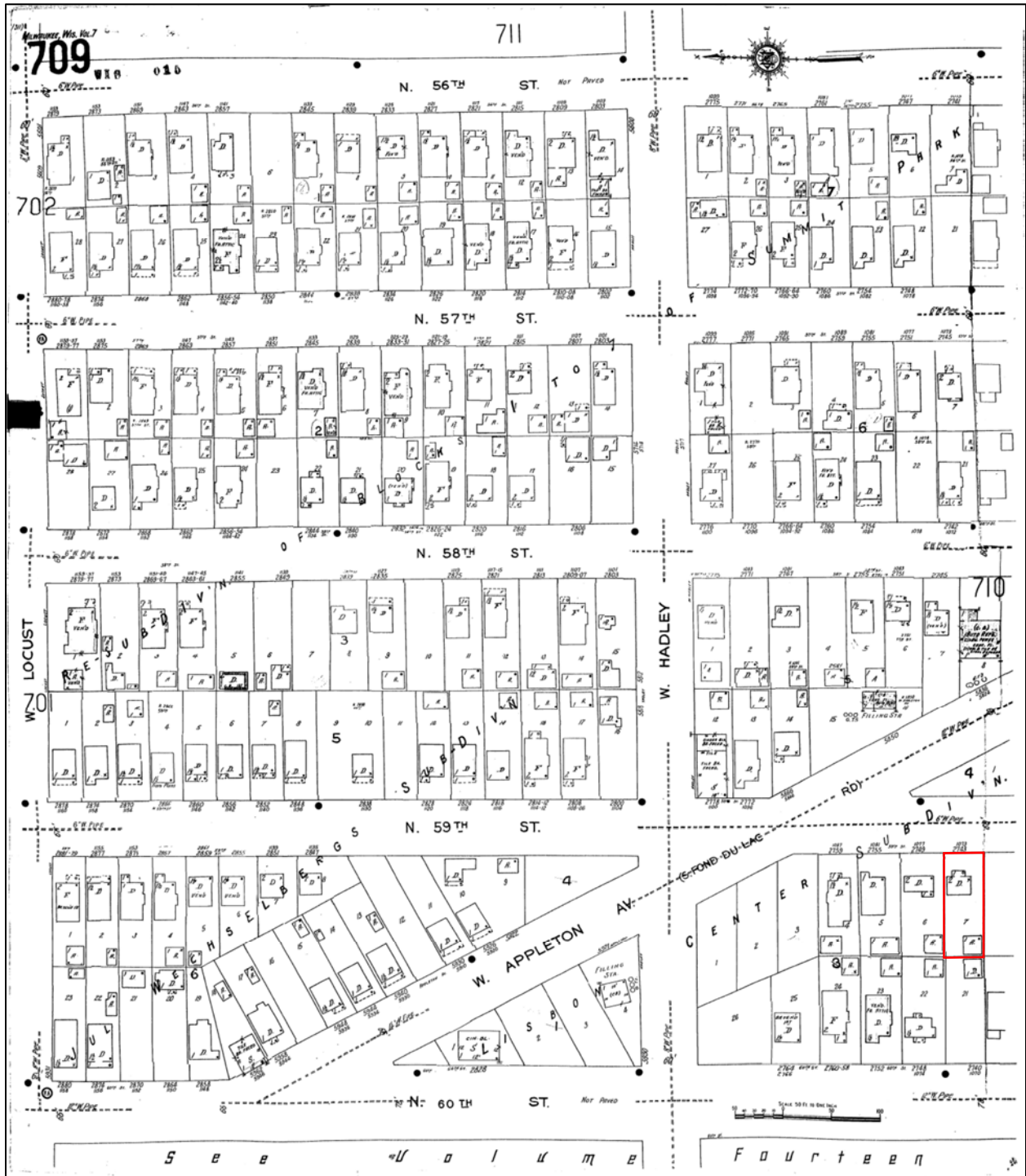
## Environmental Records

1. The Wisconsin Department of Agriculture, Trade and Consumer Protection (DATCP) online tank database does not include entries for the project site.
2. The Wisconsin Department of Natural Resources (WDNR) Bureau of Remediation and Redevelopment Tracking System (BRRS) does not include listings for the project site.

# 1937 Sanborn Map



# 1951 Sanborn Map



# 1969 Sanborn Map

