

City of Milwaukee – Department of City Development

Vacant Lot for Single-Family New Home Construction

9338 N Burbank Ave, Milwaukee WI

Size: 11,200 SF
Dimensions: 80' x 140'
Price: \$12,500
Neighborhood: Ridgeview
Zoning: RS4
Min. Build: 1,200 SF



Special Conditions:

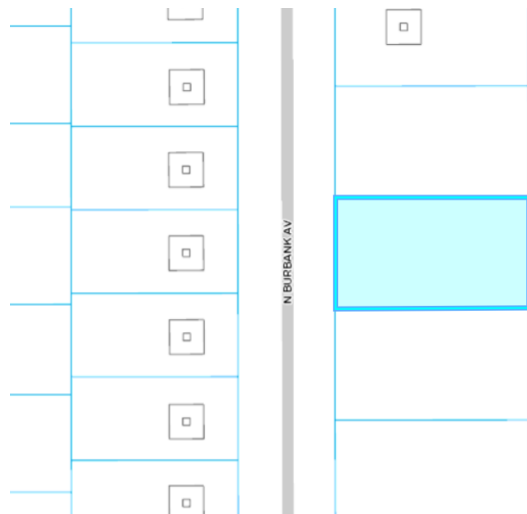
Subsurface conditions are unknown.
No survey available.

Application to Board of Zoning Appeal may be required for house designs that do not meet minimum zoning requirements for dimensions.

Water and sewer laterals present at lot.

One or two story house permitted, traditional or contemporary.

House design must be approved by the Department of City Development.



See city.milwaukee.gov/HomeBuildingSites for sale procedures.

Contact: Tess Wynn, Department of City Development
809 North Broadway, 2nd Floor, Milwaukee, WI 53202
Phone: 414-286-5838
Email: tewynn@milwaukee.gov