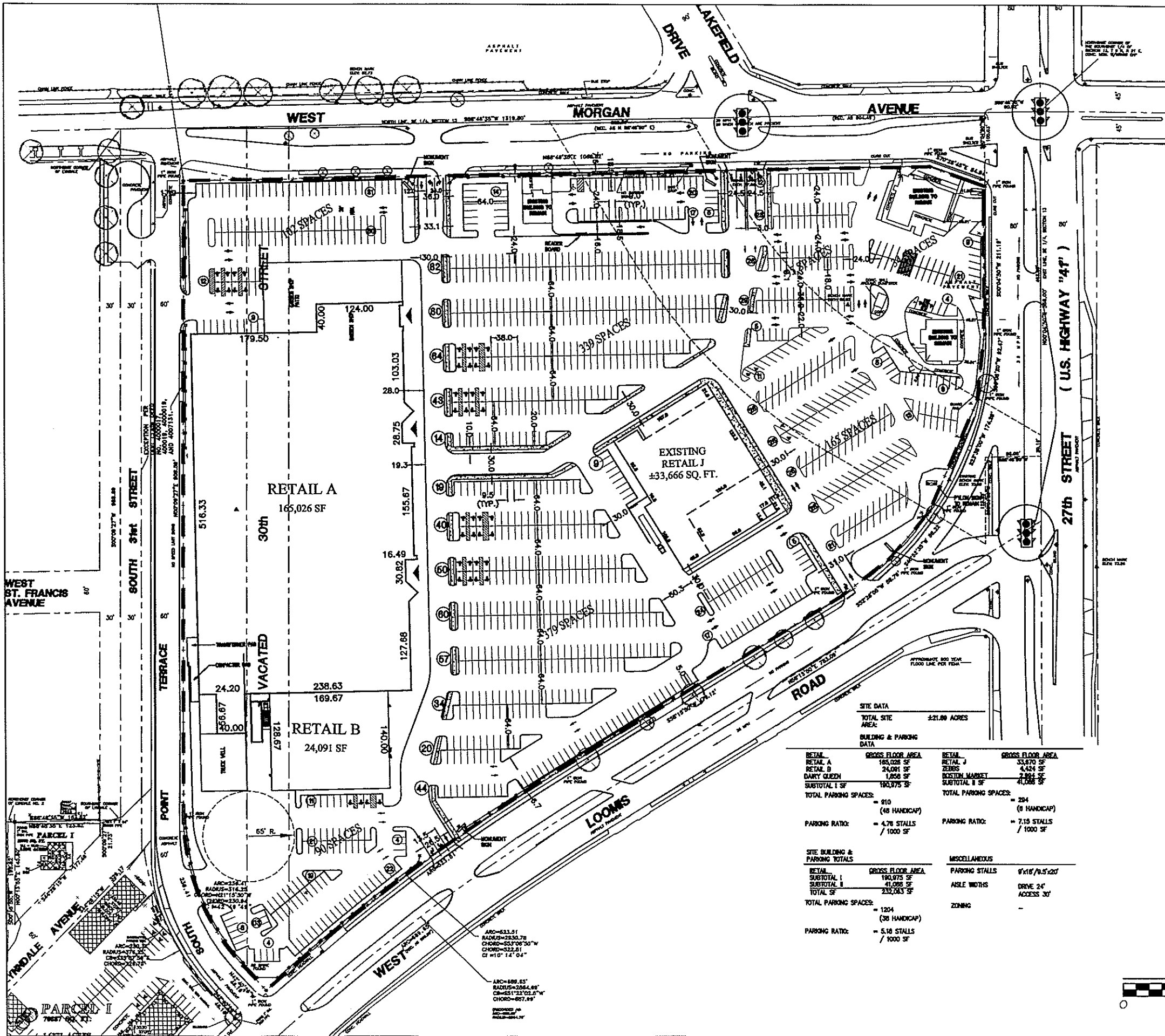
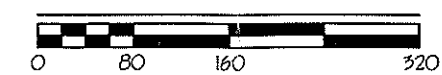


\\flr\lunum\CA\DW\Wisconsin\Milwaukee\27TH_LOOMIS_NW\CCAD\Draw_dwg\24-11\Locomis_P4-11D.dwg, 03/16/01 09:11:23 AM



SITE DATA	
TOTAL SITE AREA:	±21.00 ACRES
BUILDING & PARKING DATA	
RETAIL A GROSS FLOOR AREA	165,026 SF
RETAIL B GROSS FLOOR AREA	24,091 SF
DARTY QUEEN GROSS FLOOR AREA	1,858 SF
SUBTOTAL I SF	190,975 SF
TOTAL PARKING SPACES:	= 910 (48 HANDICAP)
PARKING RATIO:	= 4.76 STALLS / 1000 SF
SITE BUILDING & PARKING TOTALS	
RETAIL GROSS FLOOR AREA	190,975 SF
SUBTOTAL I GROSS FLOOR AREA	41,088 SF
TOTAL SF	232,063 SF
TOTAL PARKING SPACES:	= 1204 (36 HANDICAP)
PARKING RATIO:	= 5.18 STALLS / 1000 SF
MISCELLANEOUS	
PARKING STALLS	9'x18' / 9.5'x20'
ASILE WIDTHS	DRIVE 24'
	ACCESS 30'
ZONING	-



REV	DESCRIPTION	DATE
02	MINOR MODIFICATIONS TO SIGNAGE	09/16/2001 CTM
01	CHANGED PARKING SOUTH OF RETAIL B	09/06/2001 EET

RETAIL SITE PLAN

CONTINENTAL PROPERTIES
COMPANY, INC.
 P.O. Box 220, Menomonee Falls, Wisconsin 53052
 PHONE: (262)502-5500 FAX: (262)502-5522 E-MAIL: cad_dwg@properties.com

CITY: MILWAUKEE
 STATE: WI
 INITIAL DATE: 03/02/2001
 DRAWN BY: EET
 CHECKED BY: EET

SCALE: 1:160
 DRAWING REFERENCE: Loomis_PD-11D.DWG

Project No. C-107

Sheet No. PD-11D

NORTH