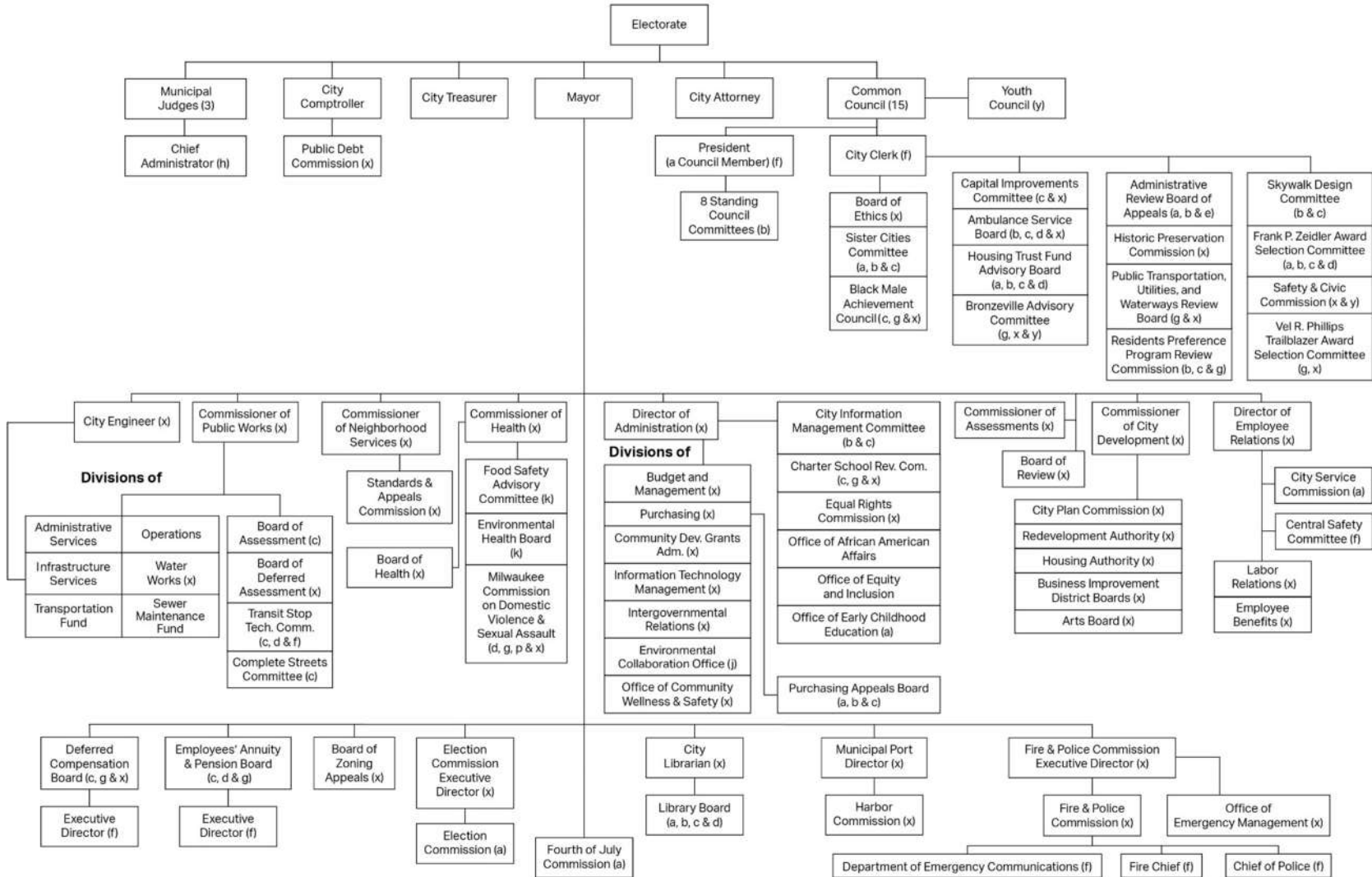


# CITY OF MILWAUKEE ORGANIZATION CHART

Source: City Clerk's Office • November 2024



<b>KEY</b>	(a) Appointment by Mayor, not confirmed by Common Council	(c) Members serve ex-officio; by law	(f) Appointment by connected board or department	(h) Appointment by Chief Municipal Judge, confirmed by Common Council	(p) Appointment by Police Chief
	(b) Members appointed by Common Council President	(d) Members selected by other external bodies	(g) Appointment by Common Council President, confirmed by Common Council	(i) Appointment by Director of Administration	(q) Appointment by Mayor, confirmed by Common Council
	(e) Appointment by City Attorney			(j) Appointment by Director of Administration	(y) Appointment by connected council, confirmed by Common Council