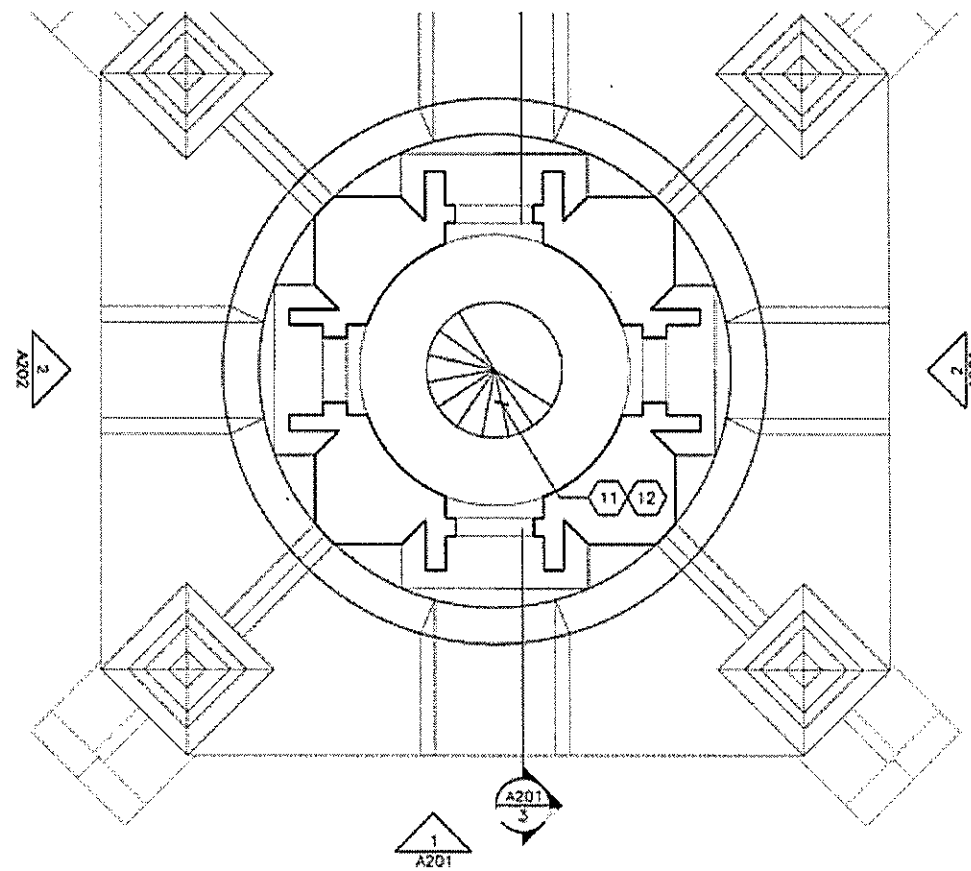


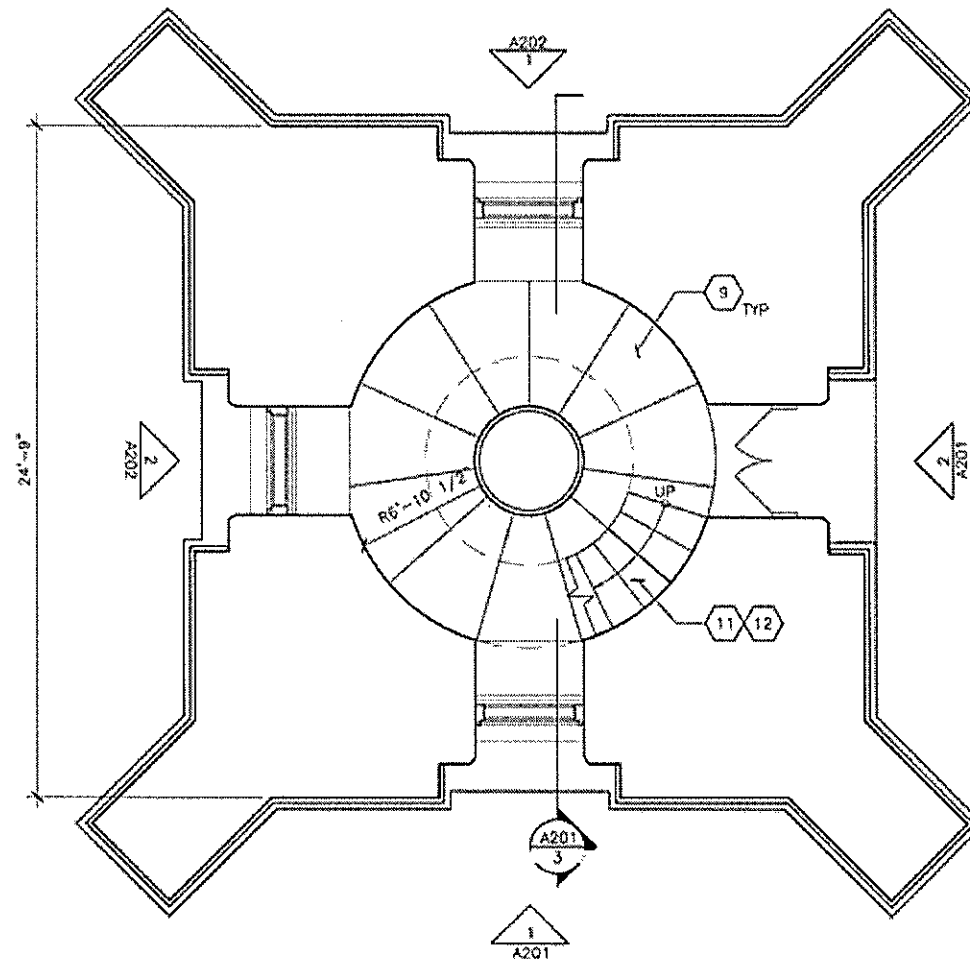
3. PROVIDE EPOXY GROUT CRACK REPAIR AT EXISTING STONE.
4. REPLACE DAMAGED / MISSING STONE FINIAL. MATCH HISTORIC MATERIAL, FINISH, AND PROFILES.
5. REPLACE DAMAGED / MISSING STONE. MATCH HISTORIC MATERIAL, FINISH, AND PROFILES.
6. PROVIDE SPALL REPAIR AT EXISTING STONE.
7. REMOVE ORGANIC DEBRIS FROM EXISTING STONE.
8. REPLACE DAMAGED / MISSING GLAZING LIGHT WITH CLEAR TEMPERED GLASS. INSTALL INTO EXISTING SASH.
9. REMOVE EXISTING CAST IRON PLATFORM PLATES, INCLUDING CARPETING AND PLYWOOD UNDERLAYMENT. REPLACE WITH NON-SLIP GALVANIZED STEEL PLATES. MATCH EXISTING PLATE SHAPES.
10. INSTALL SUMP PUMP AT LOWER LEVEL.
11. SCRAPE PRIME AND PAINT CAST IRON STAIR STRINGERS AT LOCATIONS OF SURFACE CORROSION (110) LF.
12. SCRAPE PRIME AND PAINT CAST IRON STAIR TREADS AND PLATFORM PLATES AT LOCATIONS OF SURFACE CORROSION (200) SF.

SHEET GENERAL NOTES

- A. SCRAPE, PRIME, AND PAINT ALL EXISTING WOOD FRAME WINDOWS AND DOORS. REMOVE AND REPLACE SEALANT JOINTS AT PERIMETER OF FRAMES.
- B. RE-POINT DAMAGED / MISSING EXTERIOR MORTAR JOINTS. (3,800) SF. INCLUDING BUT NOT LIMITED TO LOCATIONS INDICATED IN KEYNOTES.
- C. RE-POINT DAMAGED / MISSING INTERIOR MORTAR JOINTS. (1,500) SF.
- D. PROVIDE BIOLOGICAL SOILING REMOVER TO INTERIOR BRICK MASONRY (8,000) SF.
- E. PROVIDE EPOXY GROUT REPAIR AT EXISTING INTERIOR BRICK MASONRY (60) LF.
- F. PROVIDE INTERIM TREAD REPAIR - NON-SLIP GALVANIZED PLATES INSTALLED OVER EXISTING CAST IRON STAIR TREADS (40) TOTAL.
- F. PROVIDE INTERIM STRINGER REPAIR - GALVANIZED PLATES INSTALLED OVER EXISTING CAST IRON STAIR STRINGERS (40) LF.



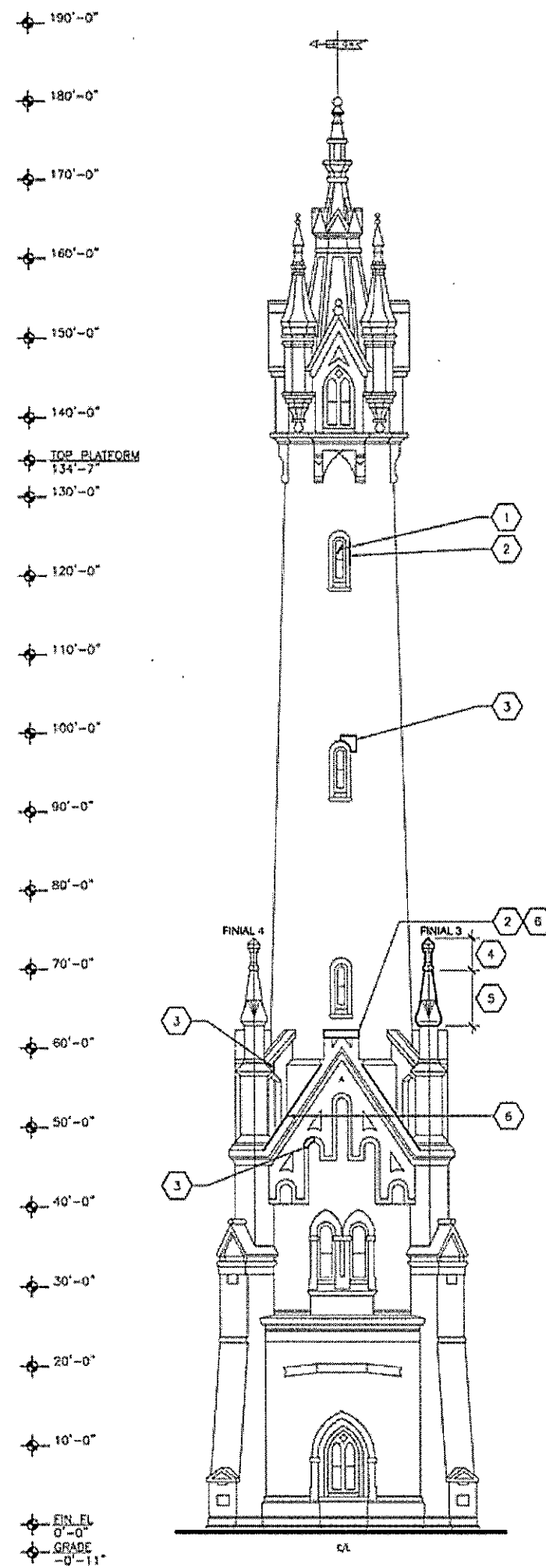
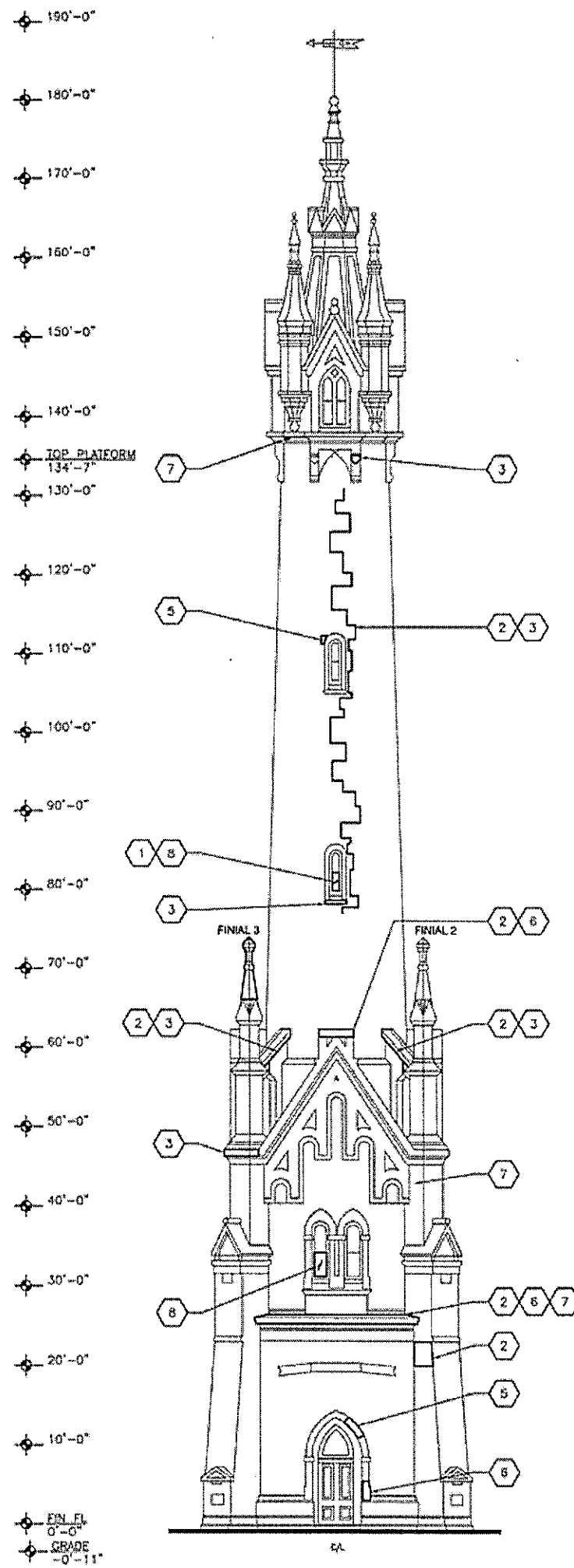
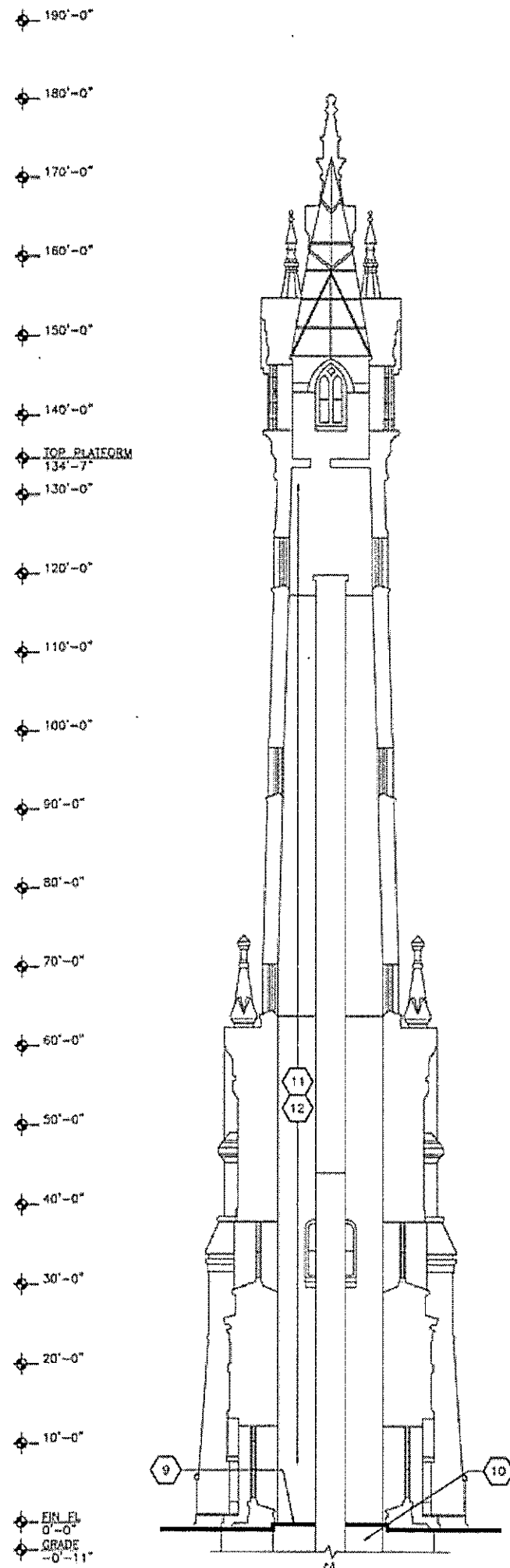
2 TOP PLATFORM FLOOR PLAN
1/8"=1'-0"



3. PROVIDE EPOXY GROUT CRACK REPAIR AT EXISTING STONE.
4. REPLACE DAMAGED / MISSING STONE FINIAL. MATCH HISTORIC MATERIAL, FINISH, AND PROFILES.
5. REPLACE DAMAGED / MISSING STONE. MATCH HISTORIC MATERIAL, FINISH, AND PROFILES.
6. PROVIDE SPALL REPAIR AT EXISTING STONE.
7. REMOVE ORGANIC DEBRIS FROM EXISTING STONE.
8. REPLACE DAMAGED / MISSING GLAZING LIGHT WITH CLEAR TEMPERED GLASS. INSTALL INTO EXISTING SASH.
9. REMOVE EXISTING CAST IRON PLATFORM PLATES, INCLUDING CARPETING AND PLYWOOD UNDERLAYMENT. REPLACE WITH NON-SLIP GALVANIZED STEEL PLATES. MATCH EXISTING PLATE SHAPES.
10. INSTALL SUMP PUMP AT LOWER LEVEL.
11. SCRAPE PRIME AND PAINT CAST IRON STAIR STRINGERS AT LOCATIONS OF SURFACE CORROSION (110) LF.
12. SCRAPE PRIME AND PAINT CAST IRON STAIR TREADS AND PLATFORM PLATES AT LOCATIONS OF SURFACE CORROSION (200) SF.

SHEET GENERAL NOTES

- A. SCRAPE, PRIME, AND PAINT ALL EXISTING WOOD FRAME WINDOWS AND DOORS. REMOVE AND REPLACE SEALANT JOINTS AT PERIMETER OF FRAMES.
- B. RE-POINT DAMAGED / MISSING EXTERIOR MORTAR JOINTS. (3,800) SF, INCLUDING BUT NOT LIMITED TO LOCATIONS INDICATED IN KEYNOTES.
- C. RE-POINT DAMAGED / MISSING INTERIOR MORTAR JOINTS. (1,500) SF.
- D. PROVIDE BIOLOGICAL SOILING REMOVER TO INTERIOR BRICK MASONRY (8,000) SF.
- E. PROVIDE EPOXY GROUT REPAIR AT EXISTING INTERIOR BRICK MASONRY (60) LF.
- F. PROVIDE INTERIM TREAD REPAIR - NON-SLIP GALVANIZED PLATES INSTALLED OVER EXISTING CAST IRON STAIR TREADS (40) TOTAL.
- F. PROVIDE INTERIM STRINGER REPAIR - GALVANIZED PLATES INSTALLED OVER EXISTING CAST IRON STAIR STRINGERS (40) LF.



3. PROVIDE EPOXY GROUT CRACK REPAIR AT EXISTING STONE.
4. REPLACE DAMAGED / MISSING STONE FINIAL. MATCH HISTORIC MATERIAL, FINISH, AND PROFILES.
5. REPLACE DAMAGED / MISSING STONE. MATCH HISTORIC MATERIAL, FINISH, AND PROFILES.
6. PROVIDE SPALL REPAIR AT EXISTING STONE.
7. REMOVE ORGANIC DEBRIS FROM EXISTING STONE.
8. REPLACE DAMAGED / MISSING GLAZING LIGHT WITH CLEAR TEMPERED GLASS. INSTALL INTO EXISTING SASH.
9. REMOVE EXISTING CAST IRON PLATFORM PLATES, INCLUDING CARPETING AND PLYWOOD UNDERLAYMENT. REPLACE WITH NON-SLIP GALVANIZED STEEL PLATES. MATCH EXISTING PLATE SHAPES.
10. INSTALL SUMP PUMP AT LOWER LEVEL.
11. SCRAPE PRIME AND PAINT CAST IRON STAIR STRINGERS AT LOCATIONS OF SURFACE CORROSION (110) LF.
12. SCRAPE PRIME AND PAINT CAST IRON STAIR TREADS AND PLATFORM PLATES AT LOCATIONS OF SURFACE CORROSION (200) SF.

SHEET GENERAL NOTES

- A. SCRAPE, PRIME, AND PAINT ALL EXISTING WOOD FRAME WINDOWS AND DOORS. REMOVE AND REPLACE SEALANT JOINTS AT PERIMETER OF FRAMES.
- B. RE-POINT DAMAGED / MISSING EXTERIOR MORTAR JOINTS. (3,800) SF, INCLUDING BUT NOT LIMITED TO LOCATIONS INDICATED IN KEYNOTES.
- C. RE-POINT DAMAGED / MISSING INTERIOR MORTAR JOINTS. (1,500) SF.
- D. PROVIDE BIOLOGICAL SCALING REMOVER TO INTERIOR BRICK MASONRY (8,000) SF.
- E. PROVIDE EPOXY GROUT REPAIR AT EXISTING INTERIOR BRICK MASONRY (60) LF.
- F. PROVIDE INTERIM TREAD REPAIR - NON-SLIP GALVANIZED PLATES INSTALLED OVER EXISTING CAST IRON STAIR TREADS (40) TOTAL.
- F. PROVIDE INTERIM STRINGER REPAIR - GALVANIZED PLATES INSTALLED OVER EXISTING CAST IRON STAIR STRINGERS (40) LF.