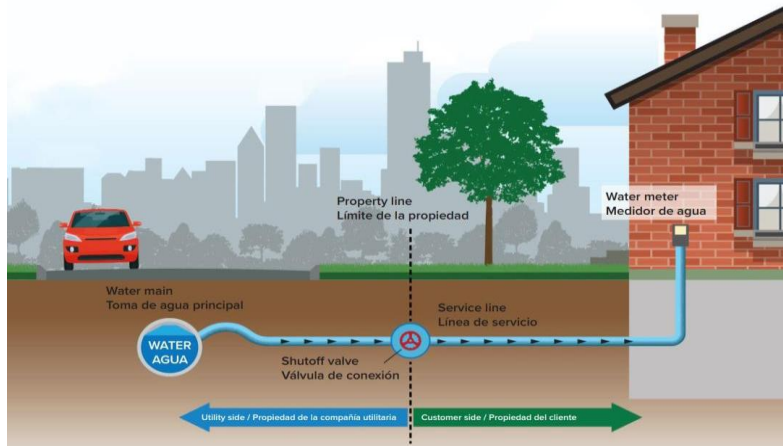


NOTICE OF CONFIRMED LEAD SERVICE LINE

December 18, 2025

Milwaukee Water Works (MWW) is focused on protecting the health of every household in our community. This notice includes important drinking water information. Please share it with anyone who drinks and/or cooks using water at this property.

MWW has determined that all or part of the service line connecting your building to the water main is made from **lead**. Homes with a lead service line may have an increased risk of lead exposure from drinking water.



Health effects of lead

Exposure to lead in drinking water can cause serious health effects at any age. In infants and children, it can reduce IQ and attention span and cause new or worsening learning and behavior problems. Exposure before or during pregnancy can increase these risks for the developing baby. In adults, lead exposure can increase the risk of heart disease, high blood pressure, and kidney or nervous system problems.

Steps you can take to reduce lead in drinking water. These steps may help reduce lead exposure, but the list is not complete, and no single action eliminates lead entirely. You can take them individually or together.

Use a filter certified to remove lead. Use an NSF 53-certified filter for all drinking and cooking water. This is especially important for households with higher-risk persons, such as bottle-fed infants or pregnant and breastfeeding women

Run your water. Before using tap water for drinking or cooking, run the kitchen faucet (or from the tap you use) on cold for a minimum of three minutes until the water is noticeably colder. This is especially important if the water has been sitting in the pipes for more than six hours. Not flushing long enough may increase your risk of lead exposure.

Drink and cook with water from the cold water tap. Hot water dissolves lead more easily. Boiling water will not reduce the amount of lead in your drinking or cooking water.

Clean your aerator. Regularly remove and clean your faucet's screen (also known as an aerator). Sediment, debris, and lead particles can build up in your aerator and if lead collects there, it can get into your water.

Flush household plumbing after construction. During street, sewer, or water main construction within one block of your home, flush household plumbing at the end of each workday.

Have your water tested. Test your water for lead using a third-party lab (approximately \$30-40):

- Northern Lake Service, www.nlslab.com, (262) 547-3406
- Wisconsin State Laboratory of Hygiene, www.slh.wisc.edu, (608) 442-4618

Lead Service Line Replacement

The Milwaukee Code of Ordinances [§ 225-22.5](#) requires a full replacement (publicly-owned portion and privately-owned portion) of the lead service line with copper from the water main that runs under the street to the curb stop (city-owned) and from the curb stop to the meter (customer-owned) in the following situations.

- **Childcare Facilities:** A licensed group childcare center, a licensed family day care center, or a certified childcare home.
- **Leaks or Failures:** When a leak or failure is found on either section of the lead service line.
- **Certain Planned Projects:** When the city-owned section is replaced, with water main replacements and prior to road reconstruction projects (when the city is completely rebuilding the road).
- **Prioritization Plan:** Using objective criteria, Water Works will assign a score to every Census Block Group in the city, intentionally prioritizing disadvantaged areas.

Subject to capacity, the ordinance also provides a property owner the opportunity to request a replacement within the city program. To participate in this program, the owner must agree to pay for the full cost of replacing the private section of the service line.

When a property owner chooses to replace their customer-owned section of lead service line when it is NOT required, the city must replace its city-owned section of lead service line.

Learn more about the City of Milwaukee's lead service replacement program and financing solutions at:

milwaukee.gov/LeadPipes.

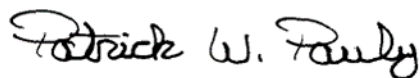
Blood Lead Testing

The Milwaukee Health Department's recommendations call for universal blood lead testing for all children in Milwaukee at 12, 18, and 24 months, and annually through the age of 5. Additional information on MHD's lead safety initiatives and resources can be found at: milwaukee.gov/HEH

Environmental Protection Agency (EPA) Resources

For more information on sources of lead, reducing lead exposure from your drinking water and the health effects of lead, visit EPA's website at epa.gov/lead and epa.gov/ground-water-and-drinking-water/basic-information-about-lead-drinking-water.

Sincerely,



Patrick Pauly, P.E.
Milwaukee Water Works Superintendent

PP: AT