

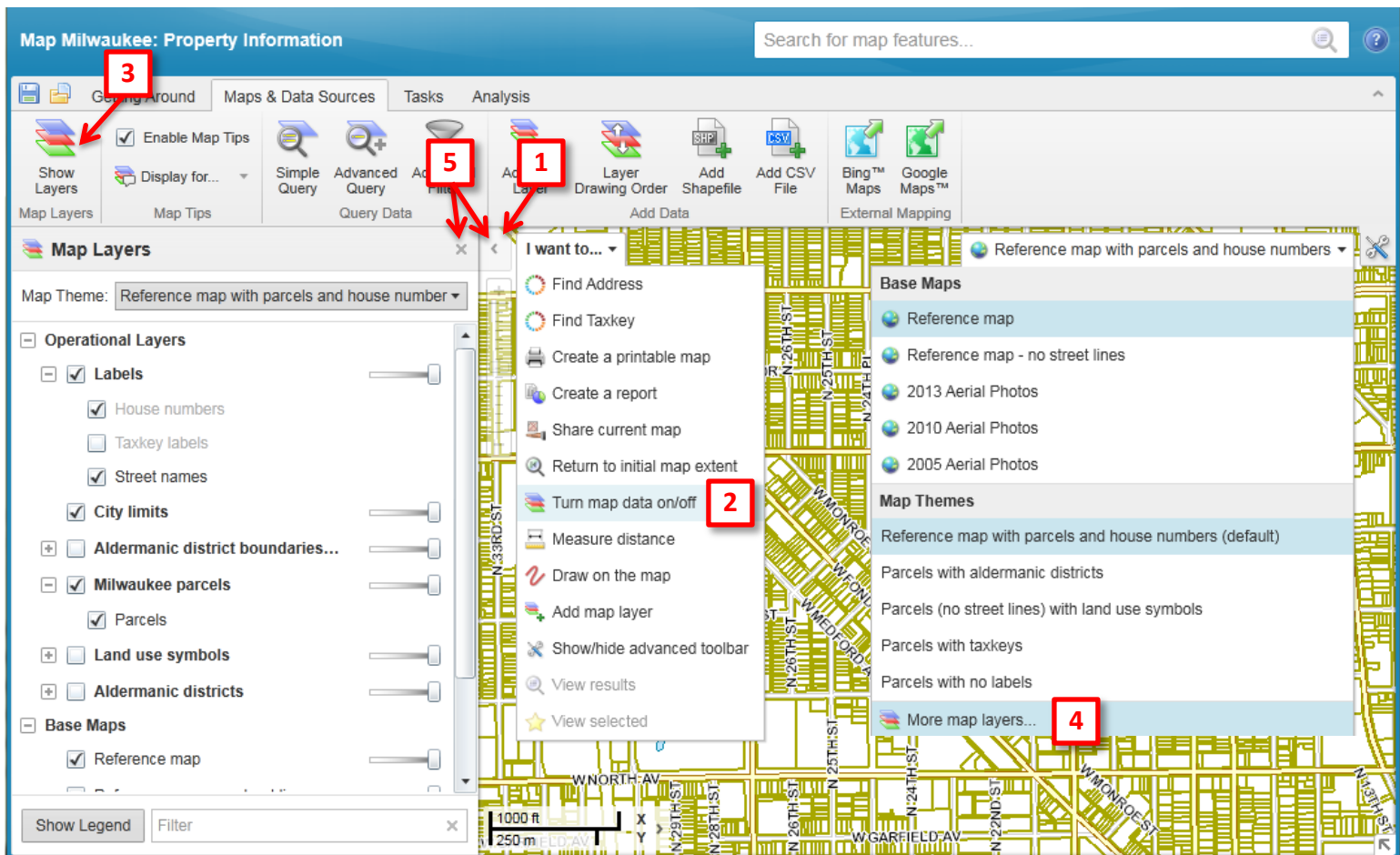


# Map Milwaukee – Map Layers Panel (and Legend)

Map Milwaukee applications separate map information into layers. This gives the user some flexibility to choose how much information they see on the map at one time. The map layers panel, also called the layer list, is where you control layer visibility and find map legend information.

## The map layers panel can be accessed a number of ways:

1. Click the arrow  beside the “I Want To” menu.
2. Select **Turn map data on/off** from the **I Want To** menu.
3. Click the **Show Layers** tool in the **Maps & Data Sources** tab in the advanced toolbar.
4. Click **More map layers...** at the bottom of the map themes drop-down list (found at the upper right corner of the map).
5. To close the map layers panel, click the X at the top of the panel, or the arrow  beside the “I Want To” menu.



When working with map layers in Map Milwaukee applications, it is important to understand that there are two kinds of map layers:

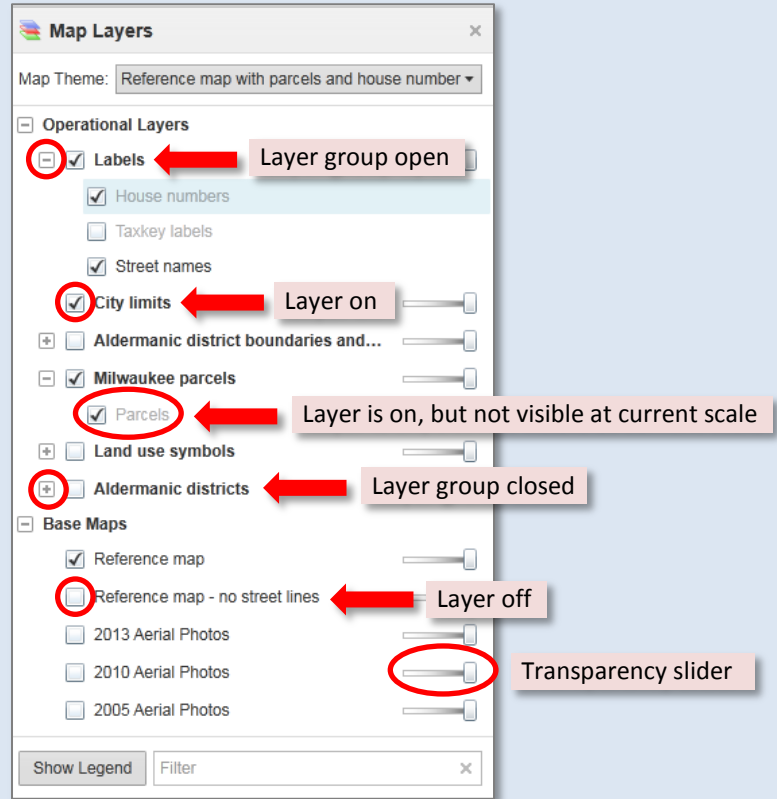
- **Operational layers** provide both visual information and attribute data. Users can change the visibility of these layers (turn them on and off) as well as interact with them to get more information (attribute data). Accessing an operational layer's attribute data is as easy as clicking on a map feature in the map. Tools in the advanced toolbar provide more flexibility for working with attribute data with tools such as identify, query and filter.
- **Base maps** provide visual reference information; a background for operational layers. Base maps are listed below operational layers in the layer list. Both reference maps and aerial photography are available as base maps. Currently, base maps provide visual information – they do not provide attribute data.

# Map Milwaukee – Map Layers Panel (and Legend)

## Working with the Map Layers Panel

Once the map layers panel is open, you will find the layers organized into groups that can be collapsed and expanded. When you first open the map layers panel, some groups may be open while others are closed. Similarly, some layers may be visible on the map while others are not.

- Beside each layer or layer group, there is a visibility checkbox that is used to turn a layer on  or off .
- Beside a layer group, there is a Plus  or Minus  that you use to expand or collapse the layers inside the group. Expanding and collapsing groups does not change which layers are visible on the map; it simply helps you stay organized.
- Group layer visibility (whether it is turned on off) overrides the visibility selections of its child layers.
- The transparency slider beside each group layer makes it possible to adjust the level of transparency of all the layers within that group. This gives you some flexibility in viewing overlapping map layers.



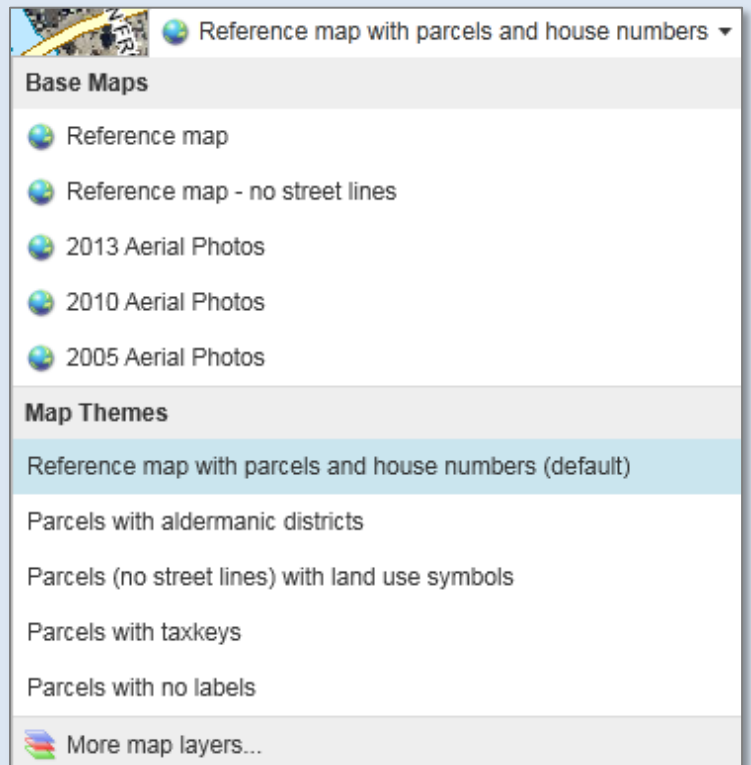
## Map Themes Drop-Down Menu

The map themes drop-down menu is found at the upper right of the map, and is a quick way to change layer visibility without needing to open the map layers panel.

The top portion of the drop-down allows you to quickly switch between base maps.

Below the base maps is a list of map themes. Map themes are commonly used combinations of layer visibility. They allow you to change the information displayed on the map without having to individually turn layers on and off.

If you open the map layer panel while making base map and map theme selections, you will see the layer check boxes turn on and off.

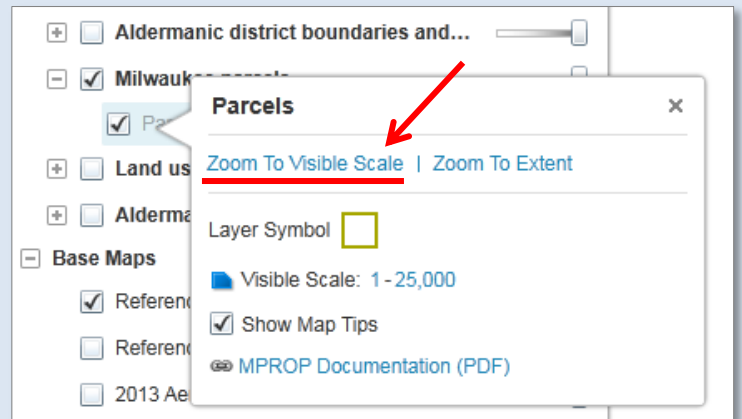


# Map Milwaukee – Map Layers Panel (and Legend)

## Scale-Dependent Visibility

Some layers require you to zoom in to a minimum scale before the features are visible. This is done to enhance application performance and user experience. For example, if parcels were visible at a city-wide scale, it would be impossible to distinguish individual parcels, and it would take a long time to draw all the features.

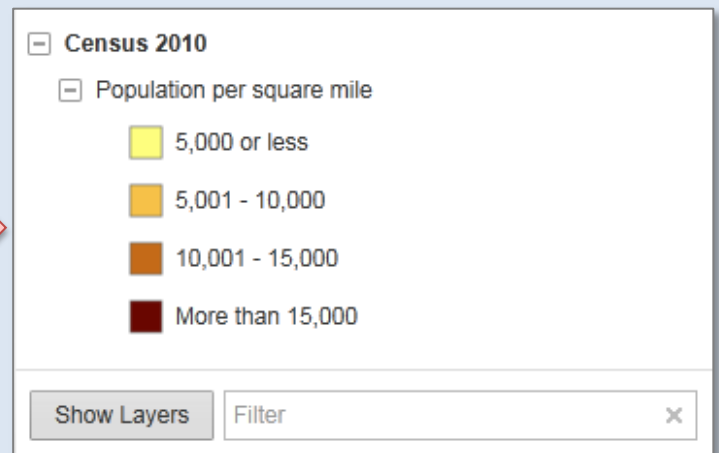
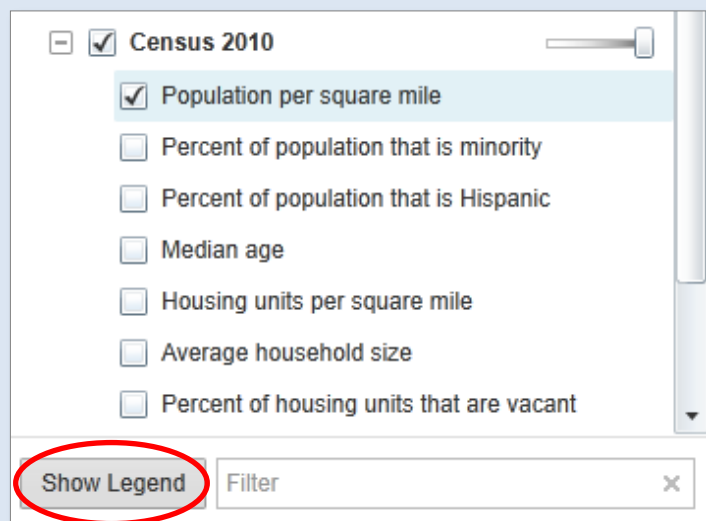
To zoom directly to a scale where a layer is visible, click that layer in the list, and then click **Zoom To Visible Scale**.



## Map Legend

At the bottom of the map layers panel is the **Show Layers/Show Legend** button. Use this button to quickly toggle between the layer list and the map legend.

**Note:** The legend only displays operational layers (excluding labels). If no operational layers are turned on or visible at the current scale, the **Show Legend** button will not be available to the user.



A quick view of a layer's legend is also available by **clicking on the layer name** in the layer list.

