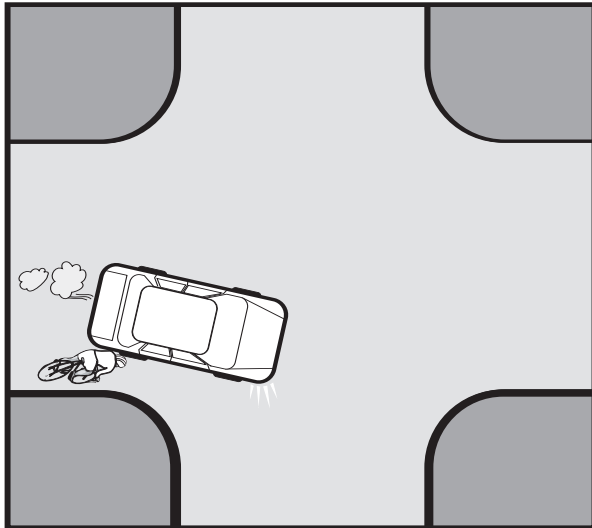


10. Watch for and obey all traffic signs.



Although you may be obeying all of the traffic laws and observing all of the traffic regulations, you should not depend on others to do so. Drivers can make mistakes. If you aren't sure of what the other driver is going to do, let them go first. A bicycle never wins in a contest with a car.



Learning safety rules and understanding traffic laws isn't enough. Driving a bike is a big responsibility. Your actions could result in injury to yourself or to others. You must be alert so that you can size up the situation and then quickly make the proper decision to avoid a crash. The bicycle does only what you make it do and to be a good driver, you must be a safe driver. Remember, you are a driver.

Always Put Your Helmet On
Before Driving Your Bike!



<p>To activate this license, register your bicycle information and the license number at www.milwaukee.gov/bike.jsp. Internet access is available at any Milwaukee Public Library. Peel off sticker and adhere to bicycle when registration is completed.</p>	<p>City of Milwaukee Bicycle License</p> <div style="border: 1px solid black; padding: 5px; display: inline-block;"> <p>0 1 0 0 0 0 0</p> </div>
---	--

MILWAUKEE POLICE DEPARTMENT
SAFETY DIVISION

6680 North Teutonia Avenue
Milwaukee, Wisconsin 53209
(414) 935-7990

Please visit the Milwaukee Police Department
Web Site at:

<http://www.milwaukee.gov/police>

Designed & produced by the Milwaukee Police Department - Printing Section

GDJ - 1742 / PSD - 58

YOU ARE A DRIVER

Milwaukee
Police
Department
Safety Division
Grades 4-8

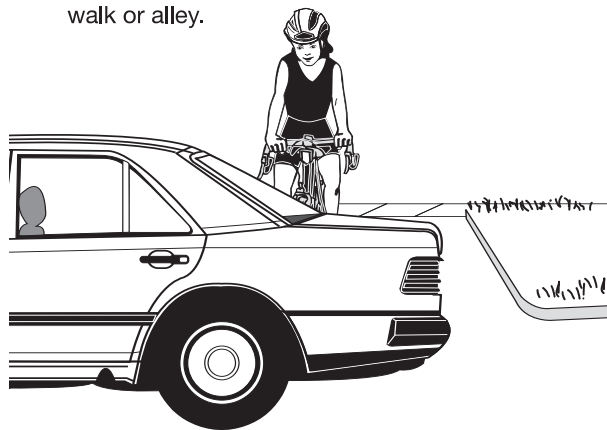
Here are some of the things to remember as you drive:

When you are on a bicycle, you are a driver. This means that you must follow the same traffic laws that automobile drivers do. Remember that a street is for traffic and it is not a playground. In the street, your bicycle is a vehicle and not a toy.

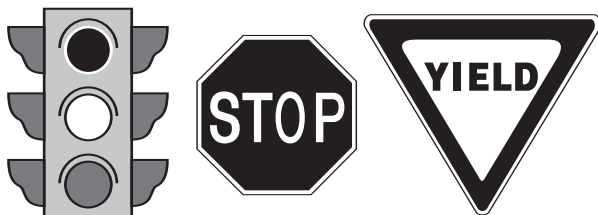
1. Stop, means a complete stop with one foot down.



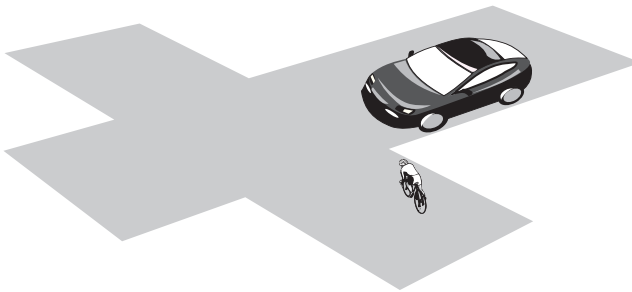
2. Stop, before entering any roadway from the side walk or alley.



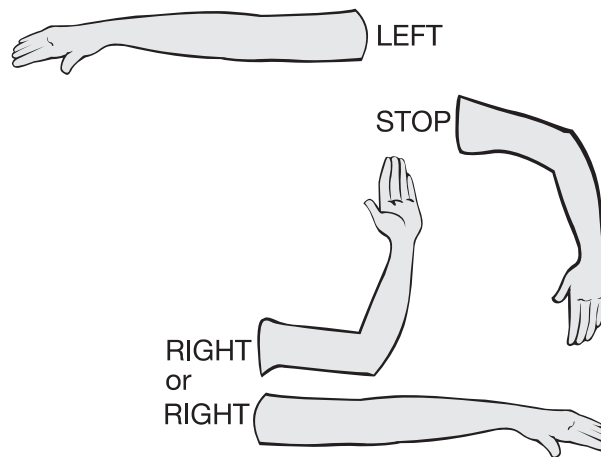
3. Stop at all red signals and stop signs and be ready to stop at yield signs.



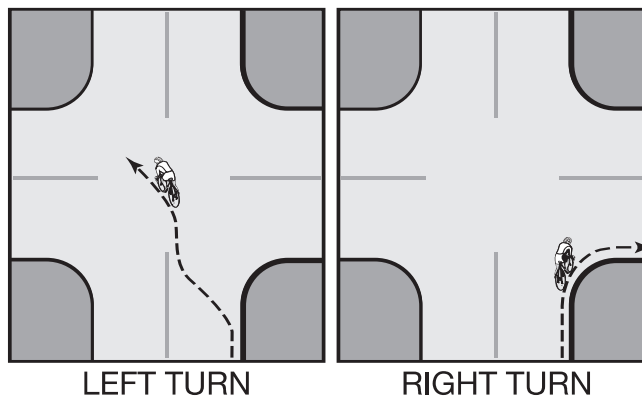
4. As you drive, be ready to stop as you come to all intersections.



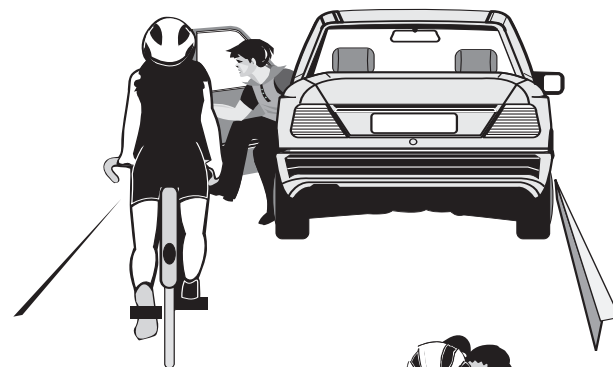
5. Signal your turns. Let other drivers know what you plan to do.



6. When making a turn, plan ahead. Check traffic behind you and be in the proper lane.



7. Be alert. Watch the road ahead of you. Look out for opening car doors and parked cars.



8. Always drive alone. You may lose control if you carry two on a bicycle built for one.



9. Drive a properly equipped bike, one with a warning device, reflector, light, and good working brakes.

