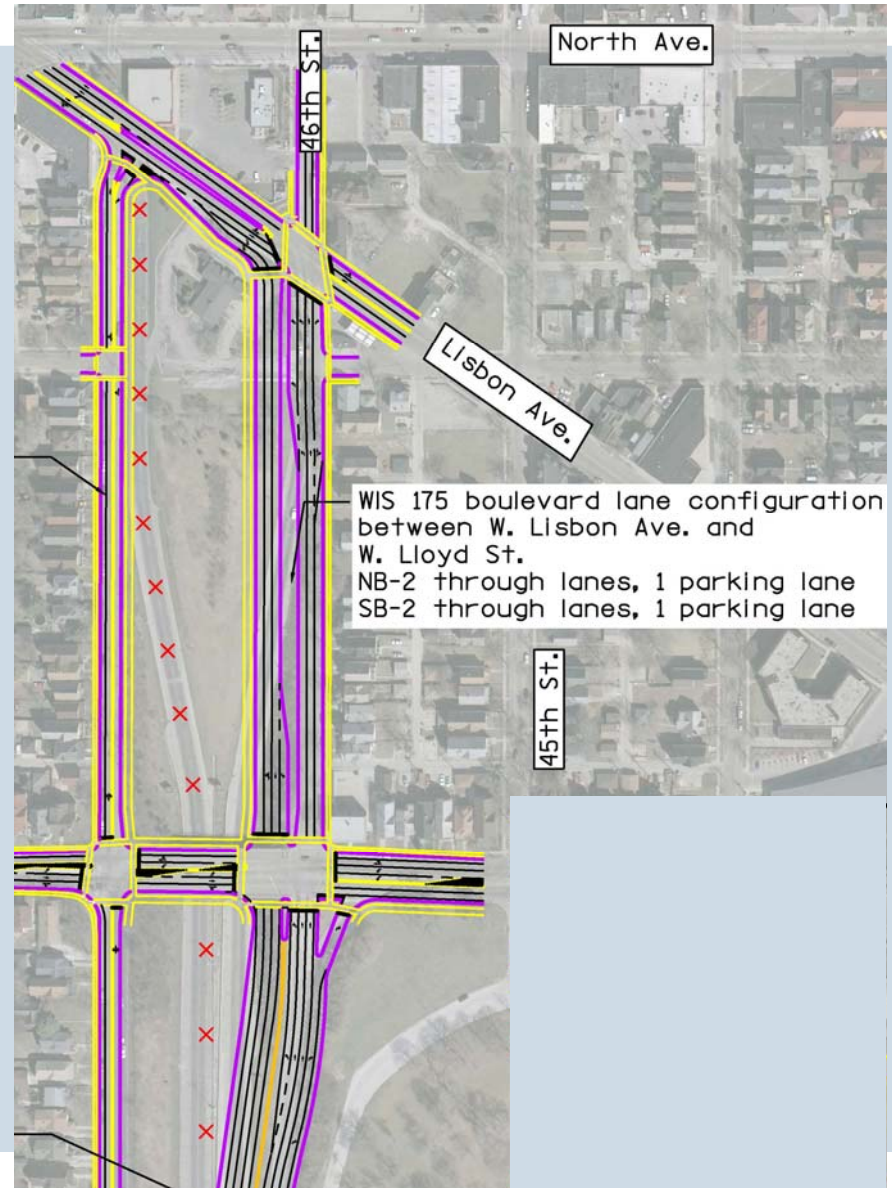


Concepts

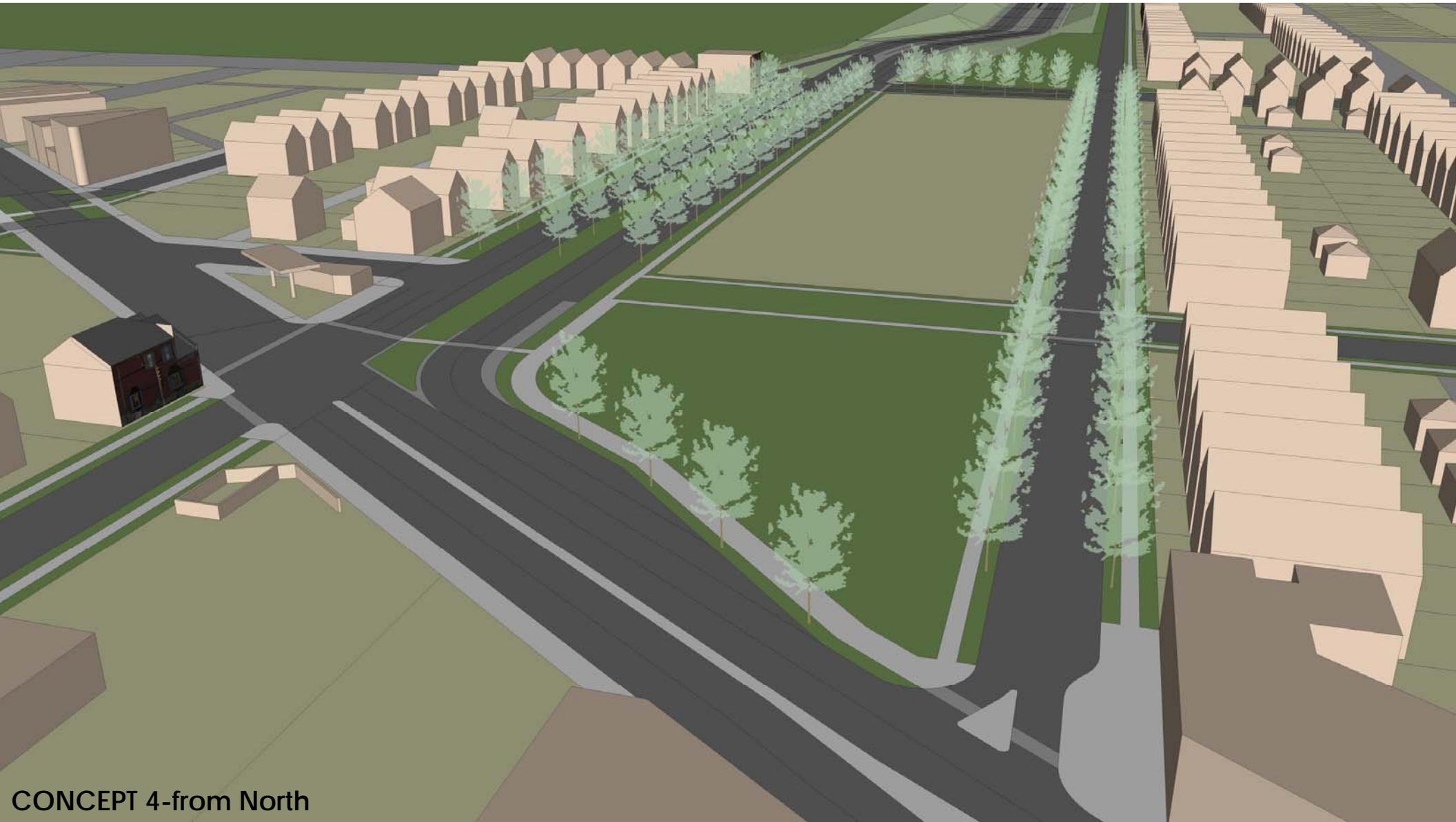
CONCEPT #4

- The freeway starts and ends south of West Lloyd Street
- The northbound and southbound ramps to and from West Lisbon Avenue are removed entirely
- A new southbound ramp is constructed parallel to the northbound ramp south of West Lloyd Street
- North 46th Street is reconstructed as a two-way boulevard from West Lloyd Street To West Lisbon Avenue





CONCEPT 4-from South



CONCEPT 4-from North