

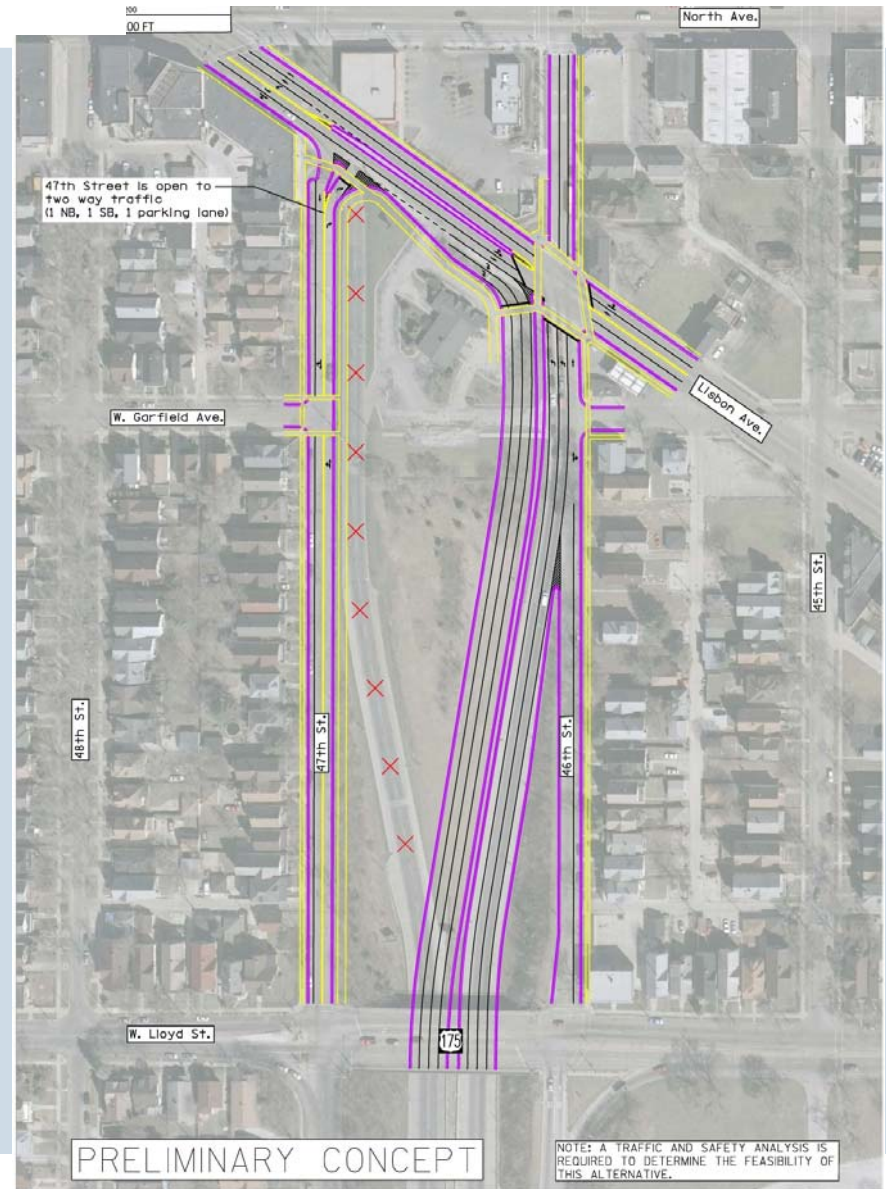
Concepts

CONCEPT #1

- The freeway starts and ends at West Lisbon Avenue
- The northbound ramp is unchanged
- The southbound ramp is reconstructed adjacent to the northbound ramp to establish a traditional intersection

Variation:

North 47th Street is open to West Lisbon Avenue





CONCEPT 1 from North



CONCEPT 1 from South