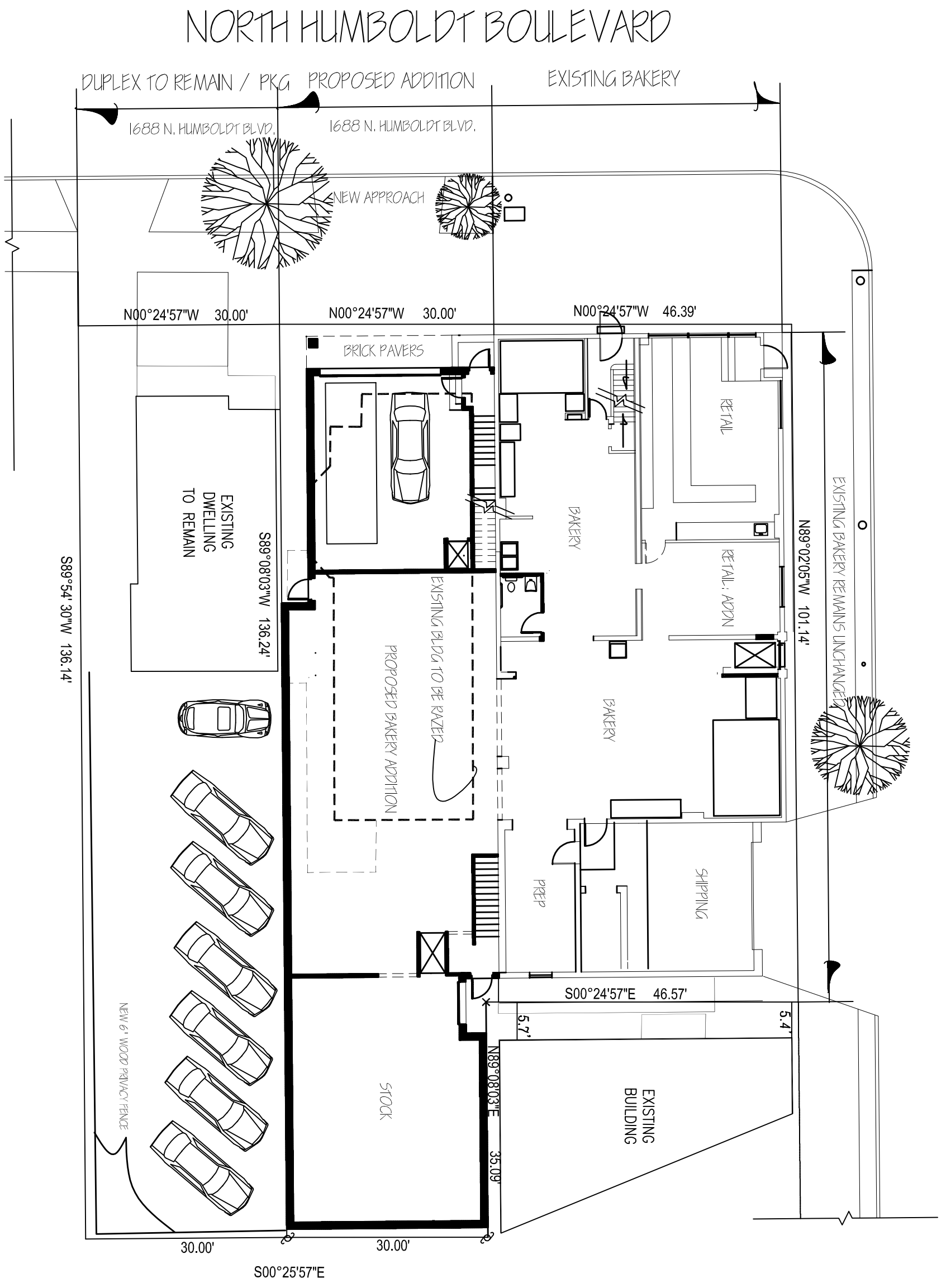
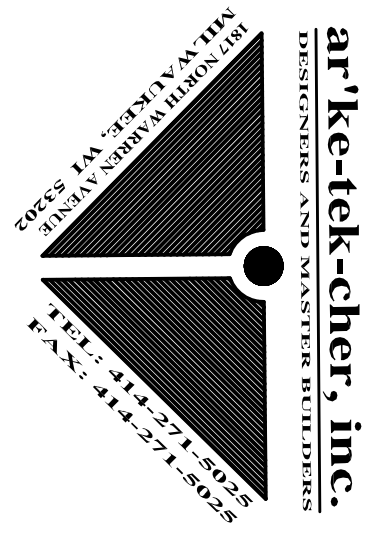


# EAST BRADY STREET



PROPOSED FIRST FLOOR / SITE PLAN  
1/16" = 1'-0"



## SCIORTINO'S BAKERY ADDITION

1100 EAST BRADY STREET  
MILWAUKEE, WI 53202  
FEBRUARY 15, 2012

### ZONING CLASSIFICATIONS:

EXISTING	REQUESTED
1100 EAST BRADY STREET: LB2	LB2
1688 NORTH HUMBOLDT BOULEVARD: RT4	RT4
1684 NORTH HUMBOLDT BOULEVARD: RT4	LB2

NOTE: PROPERTY LINE DESCRIPTIONS ARE BASED UPON SURVEYS PREPARED BY THE FOLLOWING SURVEYORS:

- 1100 E. BRADY ST. AND 1688 N. HUMBOLDT BLVD.: SURVEYING ASSOCIATES, INC. 2554 N. LOOSH ST. WAUWATOSA, WI JANUARY, 2012
- 1684 N. HUMBOLDT BLVD.: REGIONAL CONSULTING ENGINEERS, INC. 4942 N. 68TH ST. MILWAUKEE, WI AUGUST, 1996