

PABST PROFESSIONAL CENTER

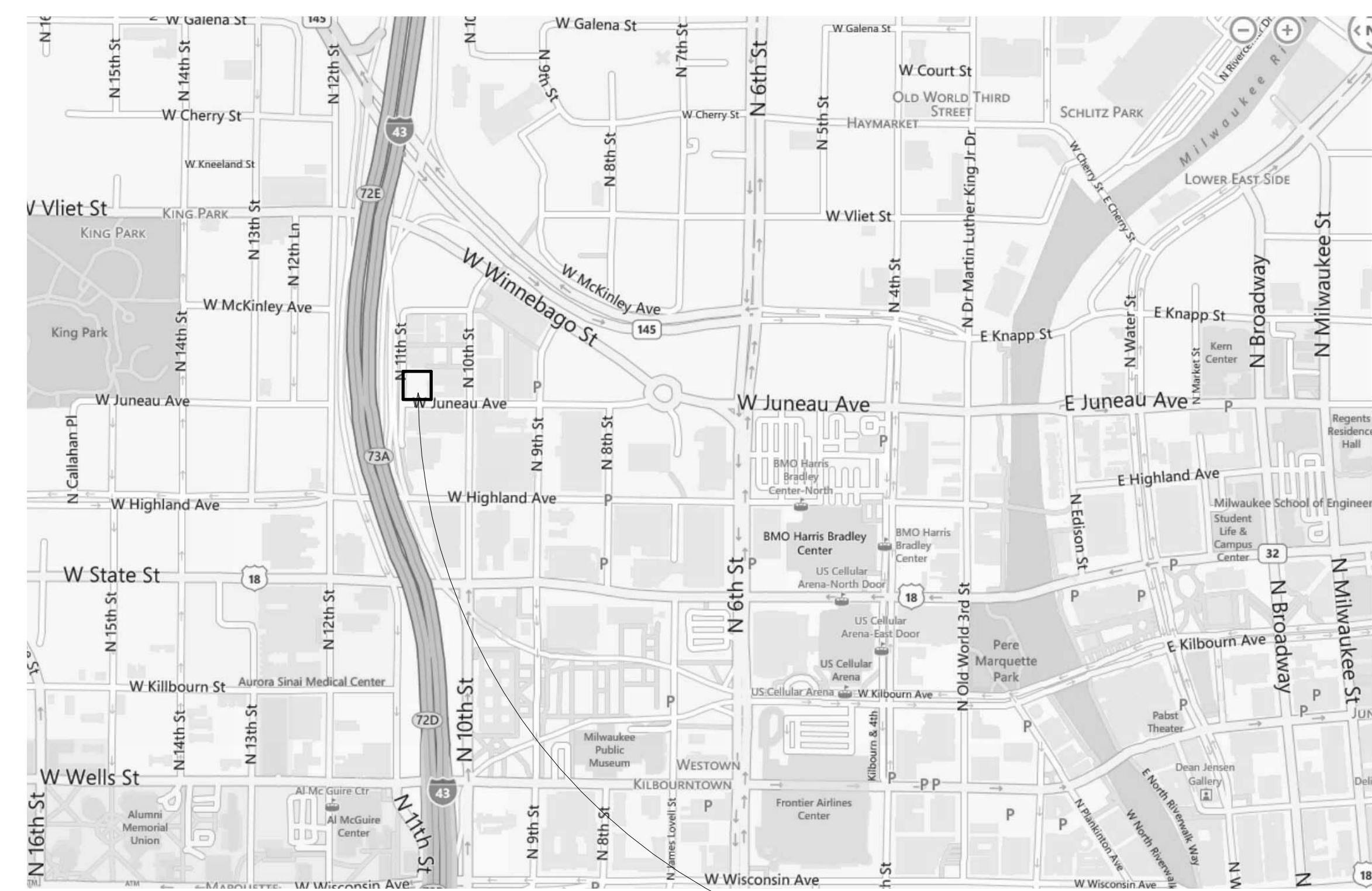
1036 W. JUNEAU AVENUE - MILWAUKEE WI

DEVELOPMENT INCENTIVE ZONE SUBMISSION

ISSUE DATE - MARCH 21, 2013



3 EXTERIOR RENDERING
NTS



2 LOCATION MAP
NTS

PRELIMINARY PLAN REVIEW - NOT FOR CONSTRUCTION

Revisions
△

**PABST
PROFESSIONAL
CENTER**
1036 W. JUNEAU AVENUE
MILWAUKEE WI

RCA Project No.: 121030.01
Sheet Title
**TITLE SHEET &
INDEX**

Issue Date 3/20/2013
Sheet No. **T1-01**

Copyright
RINKA|CHUNG ARCHITECTURE INC
750 North Milwaukee Avenue, Suite 2000
Milwaukee, Wisconsin 53202
Telephone 414.431.8107

RINKA|CHUNG
RINKA|CHUNG ARCHITECTURE INC



VIEW OF THE PROJECT SITE - LOOKING NORTH EAST



CONCRETE GRAIN SILOS TO THE NORTH



GERMAN FIRST METHODIST CHURCH TO THE SOUTH



LOOKING WEST ON JUNEAU AVENUE



LOOKING NORTH ON 11TH STREET

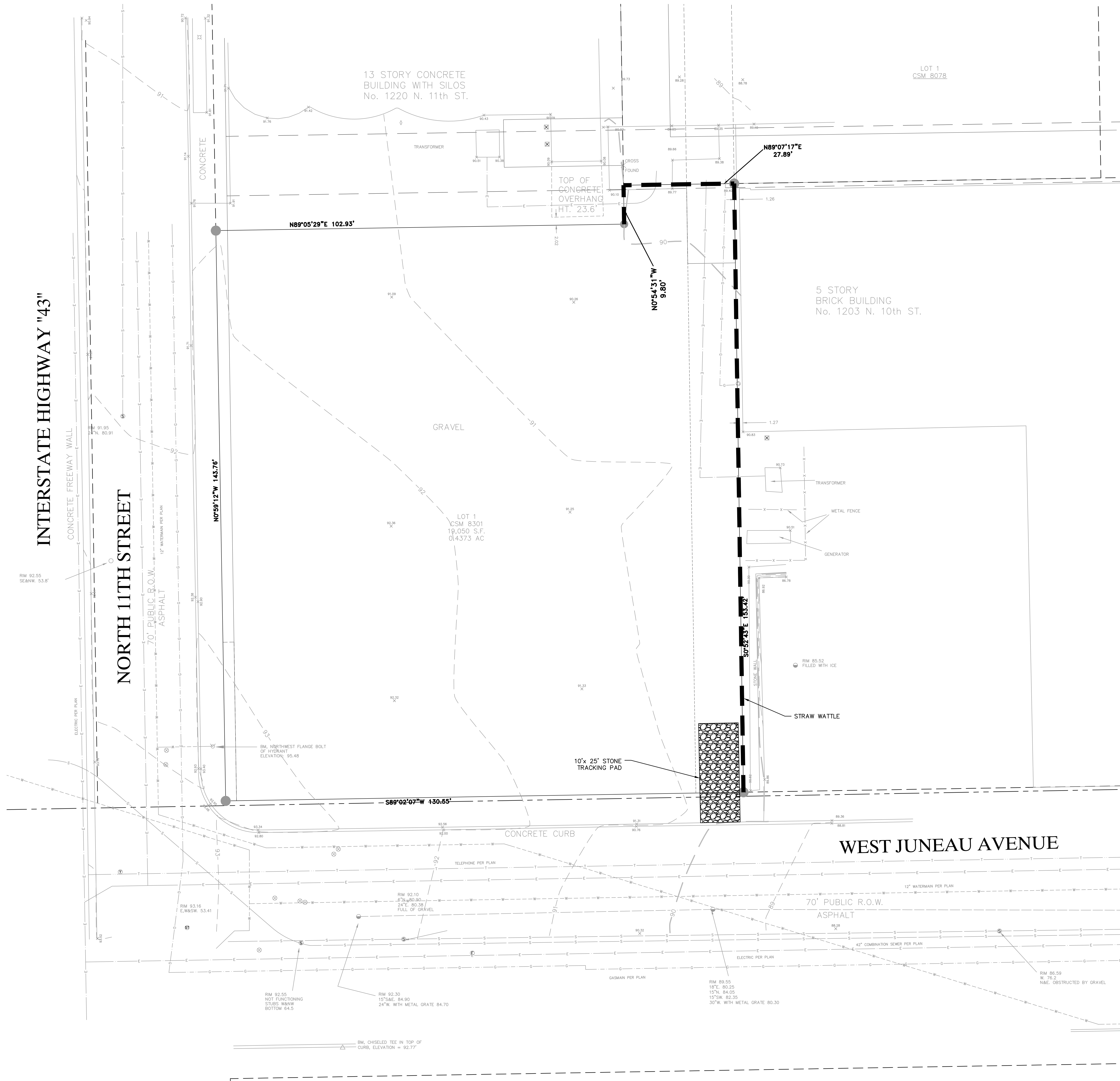


LOOKING EAST ON JUNEAU AVENUE

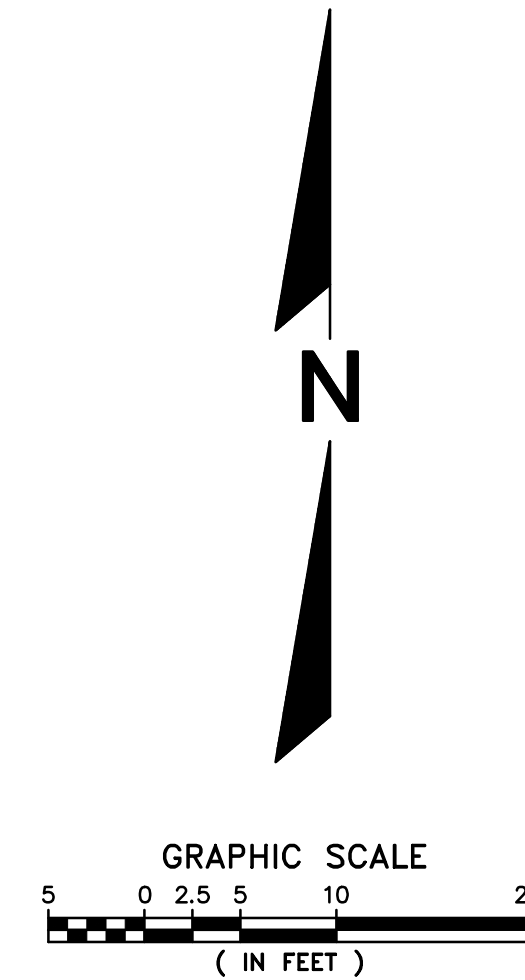
INTERSTATE HIGHWAY "43"

NORTH 11TH STREET

WEST JUNEAU AVENUE



PROPOSED	EXISTING	LEGEND
()	()	INDICATES RECORDED DIMENSION WHERE DIFFERENT FROM ACTUAL MEASUREMENT
⊕	⊕	SECTION OR 1/4 SECTION CORNER AS DESCRIBED
○	○	1" DIA. IRON PIPE FOUND (UNLESS OTHERWISE NOTED)
○	○	1" DIA. IRON PIPE, 18" LONG-SET (UNLESS OTHERWISE NOTED)
○	○	BOLLARD
○	○	SOIL BORING/MONITORING WELL
○	○	FLAGPOLE
○	○	MILBBOX
○	○	SIGN
○	○	BILLBOARD
○	○	CONTROL BOX
○	○	TRAFFIC SIGNAL
○	○	Road CROSSING SIGNAL
○	○	CABLE PEDESTAL
○	○	POWER POLE
○	○	GUY POLE
○	○	LIGHT POLE
○	○	SPOT/YARD/PEDESTAL LIGHT
○	○	HANDICAPPED PARKING
○	○	ELECTRIC MANHOLE
○	○	ELECTRIC PEDESTAL
○	○	ELECTRIC METER
○	○	TELEPHONE MANHOLE
○	○	TELEPHONE PEDESTAL
○	○	MARKED FIBER OPTIC
○	○	GAS VALVE
○	○	GAS METER
○	○	GAS WARNING SIGN
○	○	STORM MANHOLE
○	○	ROUND INLET
○	○	SQUARE INLET
○	○	STORM SEWER END SECTION
○	○	SANITARY MANHOLE
○	○	SANITARY CLEANOUT OR SEPTIC VENT
○	○	SANITARY INTERCEPTOR MANHOLE
○	○	MISCELLANEOUS MANHOLE
○	○	WATER VALVE
○	○	HYDRANT
○	○	WATER SERVICE CURB STOP
○	○	WATER MANHOLE
○	○	WELL
○	○	WATER SURFACE
○	○	WETLANDS FLAG
○	○	MARSH
○	○	CONIFEROUS TREE
○	○	DECIDUOUS TREE
○	○	SHRUB
○	○	-EDGE OF TREES
○	○	-SANITARY SEWER
○	○	-STORM SEWER
○	○	-WATERMAIN
○	○	-MARKED GAS MAIN
○	○	-MARKED ELECTRIC
○	○	-OVERHEAD WIRES
○	○	-BUREAU ELEC. SERV.
○	○	-MARKED TELEPHONE
○	○	-MARKED CABLE TV LINE
○	○	-MARKED FIBER OPTIC
○	○	INDICATES CONTOUR ELEVATION
○	○	INDICATES SPOT ELEVATION
○	○	TOP OF CURB SPOT ELEVATION
○	○	PROPOSED STONE TRACKING PAD
○	○	PROPOSED STRAW WATTLE



- NOTES:**
- EXISTING TOPOGRAPHY OBTAINED BY R.A. SMITH NATIONAL DATED FEBRUARY 26, 2013.
 - PROVIDE EROSION CONTROL FACILITIES IN ACCORDANCE WITH THE CITY OF MILWAUKEE.
 - OBTAIN AND PAY FOR ALL PERMITS REQUIRED FOR EXECUTION OF THE WORK. CONDUCT WORK IN ACCORDANCE WITH PERMIT REQUIREMENTS.

R.A. SMITH NATIONAL, INC. ASSUMES NO RESPONSIBILITY FOR DAMAGES, LIABILITY OR COSTS RESULTING FROM CHANGES OR ALTERATIONS MADE TO THIS PLAN WITHOUT THE EXPRESSED WRITTEN CONSENT OF R.A. SMITH NATIONAL.

THE LOCATIONS OF EXISTING UTILITY INSTALLATIONS AS SHOWN ON THIS PLAN ARE APPROXIMATE. THERE MAY BE OTHER UNDERGROUND UTILITY INSTALLATIONS WITHIN THE PROJECT AREA THAT ARE NOT SHOWN.



PRELIMINARY PRICING SET - NOT FOR CONSTRUCTION

PABST PROFESSIONAL CENTER
1008 WEST JUNEAU AVE
Issue Date MARCH 12, 2013

RCA Project No.: 121030.01
Sheet Title: Site Demolition & Erosion Control Plan

Sheet No. C1.0

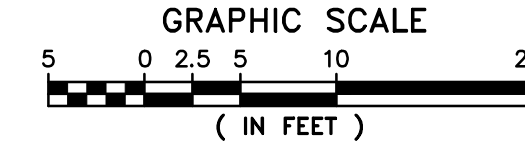
INTERSTATE HIGHWAY "43"

NORTH 11TH STREET

WEST JUNEAU AVENUE

LEGEND

PROPOSED	EXISTING	DESCRIPTION
()	()	INDICATES RECORDED DIMENSION WHERE DIFFERENT FROM ACTUAL MEASUREMENT
OR	OR	SECTION OR 1/4 SECTION CORNER AS DESCRIBED
○	○	1" DIA. IRON PIPE FOUND (UNLESS OTHERWISE NOTED)
○	○	1" DIA. IRON PIPE, 18" LONG-SET (UNLESS OTHERWISE NOTED)
○	○	BOLLARD
○	○	SOIL BORING/MONITORING WELL
○	○	FLAGPOLE
○	○	MILBBOX
○	○	SIGN
○	○	BILLBOARD
○	○	CONTROL BOX
○	○	TRAFFIC SIGNAL
○	○	Roadway CROSSING SIGNAL
○	○	CABLE PEDESTAL
○	○	POWER POLE
○	○	GUY POLE
○	○	GUY WIRE
○	○	LIGHT POLE
○	○	SPOT/YARD/PEDESTAL LIGHT
○	○	HANDICAPPED PARKING
○	○	ELECTRIC MANHOLE
○	○	ELECTRIC PEDESTAL
○	○	ELECTRIC METER
○	○	TELEPHONE MANHOLE
○	○	TELEPHONE PEDESTAL
○	○	GAS VALVE
○	○	GAS METER
○	○	GAS WARNING SIGN
○	○	STORM MANHOLE
○	○	ROUND INLET
○	○	SQUARE INLET
○	○	STORM SEWER END SECTION
○	○	SANITARY MANHOLE
○	○	SANITARY CLEANOUT OR SEPTIC VENT
○	○	SANITARY INTERCEPTOR MANHOLE
○	○	MISCELLANEOUS MANHOLE
○	○	WATER VALVE
○	○	HYDRANT
○	○	WATER SERVICE CURB STOP
○	○	WATER MANHOLE
○	○	WELL
○	○	WATER SURFACE
○	○	WETLANDS FLAG
○	○	MARSH
○	○	CONIFEROUS TREE
○	○	DECIDUOUS TREE
○	○	SHRUB
○	○	-EDGE OF TREES
○	○	-SANITARY SEWER
○	○	-STORM SEWER
○	○	-WATERMAIN
○	○	-MARKED GAS MAIN
○	○	-MARKED ELECTRIC
○	○	-OVERHEAD WIRES
○	○	-BUREAU ELEC. SERV.
○	○	-MARKED TELEPHONE
○	○	-MARKED CABLE TV LINE
○	○	-MARKED FIBER OPTIC
○	○	INDICATES CONTOUR ELEVATION
○	○	INDICATES SPOT ELEVATION
○	○	TOP OF CURB SPOT ELEVATION
○	○	PROPOSED CONCRETE DRIVEWAY
○	○	PROPOSED CONCRETE PAVEMENT
○	○	PROPOSED CONCRETE SIDEWALK
○	○	TEMPORARY INLET PROTECTION



NOTES:

- EXISTING TOPOGRAPHY OBTAINED BY R.A. SMITH NATIONAL DATED FEBRUARY 26, 2013.
- ALL DIMENSIONS ARE SHOWN TO FACE OF CURB, FACE OF WALL OR FACE OF BUILDING UNLESS OTHERWISE NOTED.
- ALL PIPE LENGTHS ARE SHOWN TO CENTER OF STRUCTURE.
- BEFORE PROCEEDING WITH SITE PLUMBING, EXCAVATE EACH EXISTING LATERAL OR POINT OF CONNECTION AND VERIFY THE SIZE, LOCATION, AND ELEVATION.
- REFER TO ARCHITECTURAL PLANS FOR EXACT LOCATION AND DIMENSIONS OF ENTRANCES, VESTIBULES, STAIRS, RAMPS, AND RETAINING WALLS.

R.A. SMITH NATIONAL, INC. ASSUMES NO RESPONSIBILITY FOR DAMAGES, LIABILITY OR COSTS RESULTING FROM CHANGES OR ALTERATIONS MADE TO THIS PLAN WITHOUT THE EXPRESSED WRITTEN CONSENT OF R.A. SMITH NATIONAL.

THE LOCATIONS OF EXISTING UTILITY INSTALLATIONS AS SHOWN ON THIS PLAN ARE APPROXIMATE. THERE MAY BE OTHER UNDERGROUND UTILITY INSTALLATIONS WITHIN THE PROJECT AREA THAT ARE NOT SHOWN.



Call 811 3 Work Days Before You Dig or Toll Free (800) 242-2411
Hearing Impaired TDD (800) 542-2289
www.DiggersHotline.com

PRELIMINARY PRICING SET - NOT FOR CONSTRUCTION

PABST PROFESSIONAL CENTER
1008 WEST JUNEAU AVE
Issue Date MARCH 12, 2013

RCA Project No.: 121030.01
Sheet Title: Site Improvement Plan
Sheet No.: C1.1



Revisions

Copyright
R.A. SMITH NATIONAL, INC.
700 UNIVERSITY AVENUE
MILWAUKEE, WISCONSIN 53233
Telephone: 414.431.1511

1" = 10' (VERTICAL SCALE)
1" = 10' (HORIZONTAL SCALE)

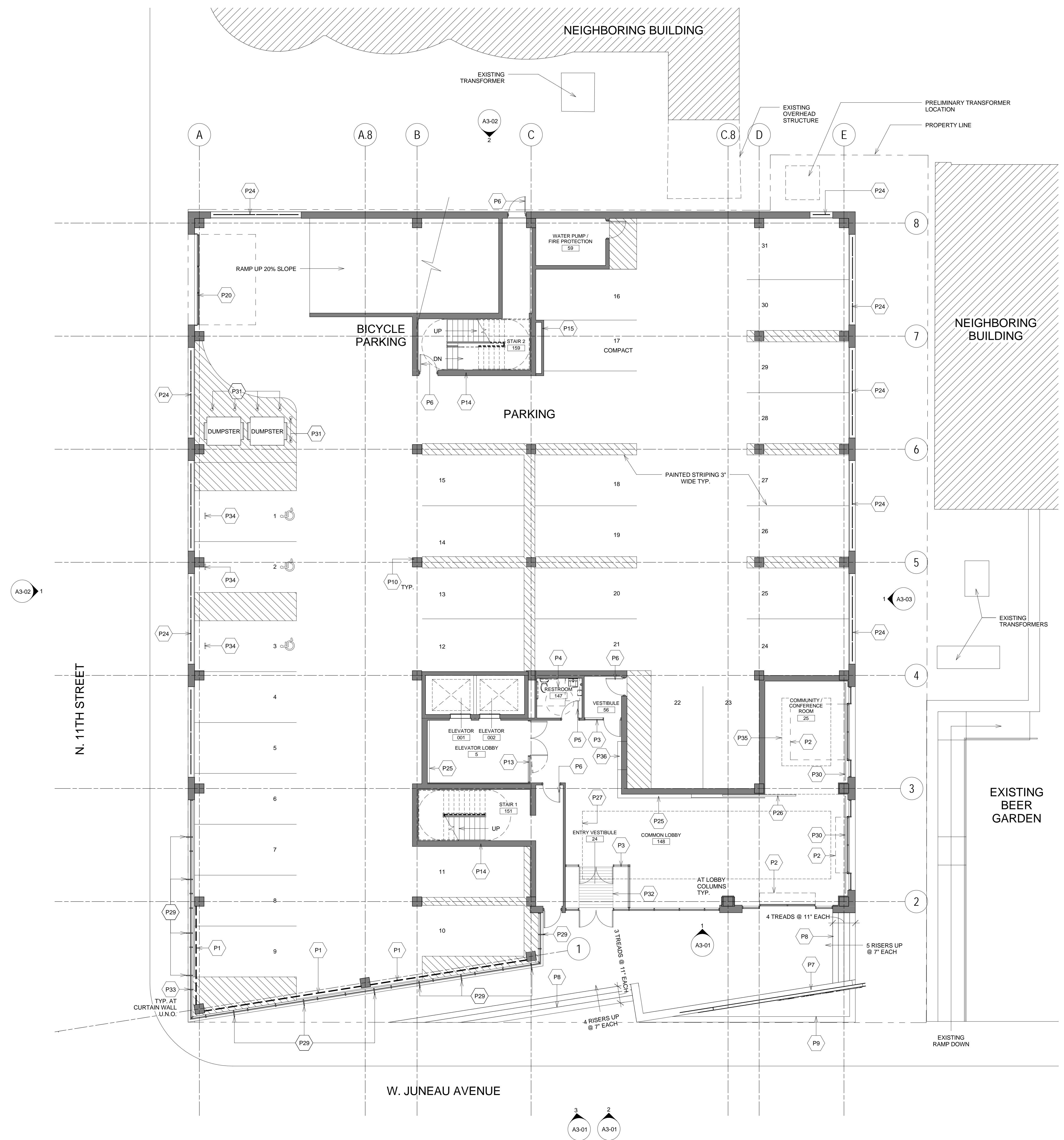
GENERAL NOTES

1. SEE SHEET T1-01, T1-02, & T1-03 FOR ADDITIONAL PROJECT INFORMATION
2. ALL INTERIOR PARTITIONS TO BE TYPE DL, U.N.O.
3. PROVIDE BLOCKING TO SUPPORT ALL LIGHT FIXTURES, EQUIPMENT, CASEWORK, ETC.
4. REFER TO SCHEMATIC DESIGN NARRATIVE FOR PROJECT MATERIALS/SYSTEMS

EXTERIOR/INTERIOR PARTITION TYPE, FLOOR & ROOF TYPE - REFER TO SHEET T1-03

KEY NOTES

- P1 ARCHITECTURAL METAL MESH SCREEN WITH ARTIST INSTALLATION ON STRETCHED CANVAS SPANNING FLOOR TO FLOOR
- P2 SECTIONAL OVERHEAD CONFERENCE ROOM DOORS
- P3 ALUMINUM CURTAINWALL SYSTEM WITH WOOD ENTRANCE DOORS
- P4 TOILET ROOM PLUMBING FIXTURES & TOILET ACCESSORIES
- P5 RESTROOM DOOR & FRAME
- P6 SERVICE ROOM DOOR & FRAME
- P7 EXTERIOR MONUMENT SIGN & MASONRY SUPPORT WALL - REFER TO ELEVATIONS & DETAILS
- P8 CAST IN PLACE CONCRETE STEPS
- P9 EXTERIOR CONCRETE PLANTER WITH RUBBED FINISH
- P10 CAST IN PLACE CONCRETE COLUMN, PROVIDE FRAMING & GYPSUM BOARD FINISH ON INTERIOR, EXPOSED FINISH AT PARKING AREAS
- P13 INTERIOR ALUMINUM STOREFRONT AT ELEVATOR LOBBY - 1 HR RATED ASSEMBLY
- P14 CAST IN PLACE STAIR AND ELEVATOR SHAFT
- P15 2 HR RATED MECHANICAL SHAFT ENCLOSURE - REFER TO WALL TYPES
- P20 SECTIONAL OVERHEAD GARAGE DOOR
- P24 WOVEN WIRE MESH PANELS
- P25 WOOD VENEER PANELING FEATURE SIGNAGE WALL, FULL HEIGHT
- P26 WOOD SLIDING DOOR TO MATCH WOOD VENEER PANELING WITH INDUSTRIAL TRACK AND TROLLEY HARDWARE
- P27 SUSPENDED EXPOSED STEEL AND PHENOLIC PANEL SOFFIT SYSTEM ABOVE
- P29 CURTAIN WALL VERTICAL MULLION WITH CUSTOM WOOD FIN - REFER TO DETAIL 8/A3-10
- P30 42" HIGH METAL BAR STOCK RAILING
- P31 9" DIA. CONCRETE FILLED PLASTIC SLEEVE BOLLARD - 36" IN HEIGHT - PAINTED
- P32 RECESSED WALK OFF MAT
- P33 CURTAIN WALL DEEP VERTICAL MULLION - REFER TO DETAIL 7/A3-10
- P34 ACCESSIBLE PARKING SIGN
- P35 ACOUSTICAL CEILING TILE SUSPENDED CLOUD
- P36 MAILBOXES INTEGRATED INTO STEEL & WOOD PANEL FEATURE WALL



1 1ST FLOOR PLAN
 1/8" = 1'-0"

PRELIMINARY PLAN REVIEW - NOT FOR CONSTRUCTION

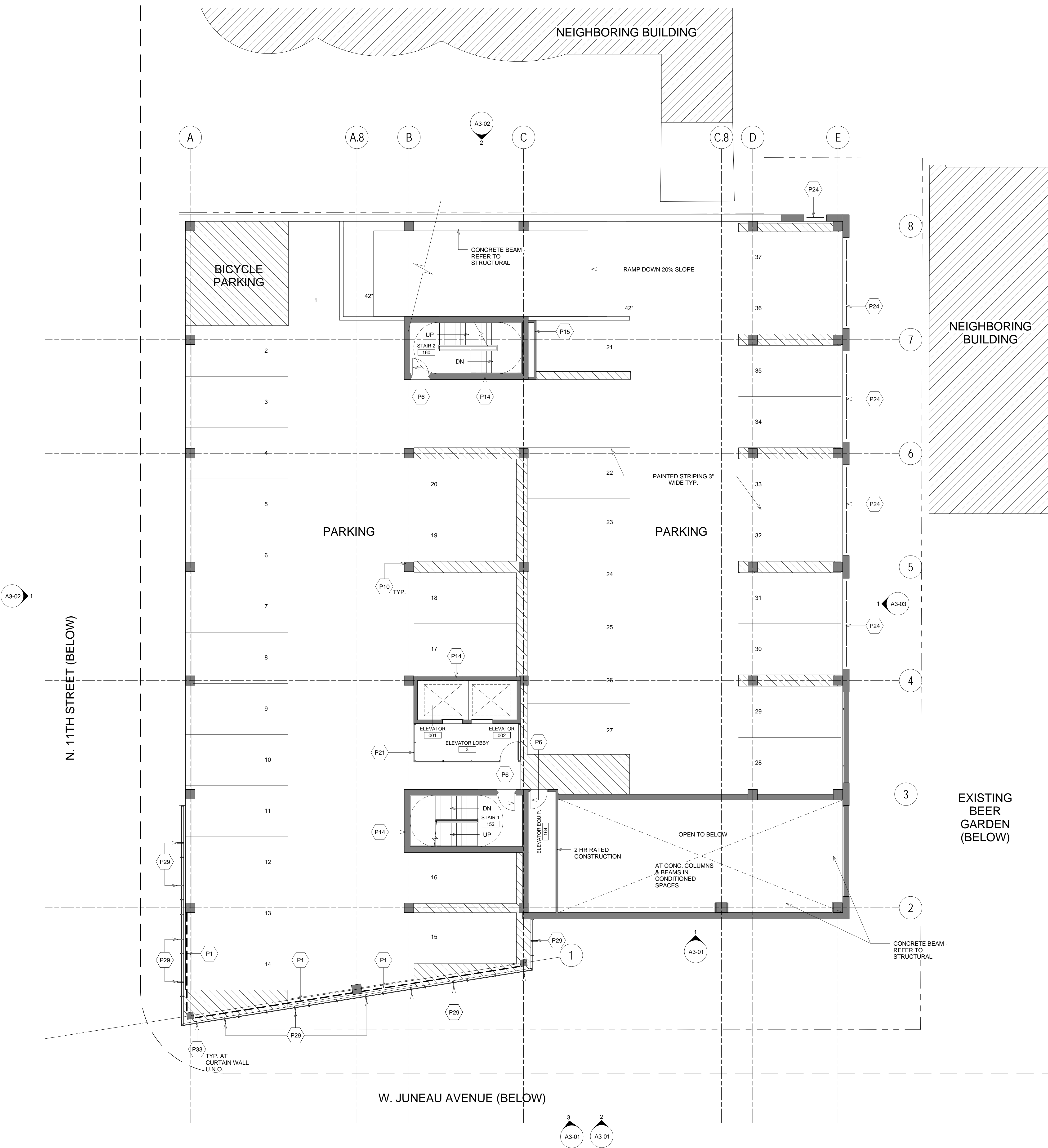
Revisions

PABST
PROFESSIONAL
CENTER
 1008 W. JUNEAU AVENUE
 MILWAUKEE, WI

Issue Date 3.20.2013

RCA Project No.: 121030.01
 Sheet Title
FIRST FLOOR
PLAN

Sheet No. **A1-01**



GENERAL NOTES

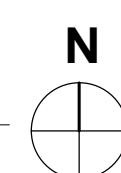
- SEE SHEET T1-01, T1-02, & T1-03 FOR ADDITIONAL PROJECT INFORMATION
- ALL INTERIOR PARTITIONS TO BE TYPE D4, U.N.O.
- PROVIDE BLOCKING TO SUPPORT ALL LIGHT FIXTURES, EQUIPMENT, CASEWORK, ETC.
- REFER TO SCHEMATIC DESIGN NARRATIVE FOR PROJECT MATERIALS/SYSTEMS

◇ EXTERIOR/INTERIOR PARTITION TYPE, FLOOR & ROOF TYPE - REFER TO SHEET T1-03

KEY NOTES

- P1 ARCHITECTURAL METAL MESH SCREEN WITH ARTIST INSTALLATION ON STRETCHED CANVAS SPANNING FLOOR TO FLOOR
- P6 SERVICE ROOM DOOR & FRAME
- P10 CAST IN PLACE CONCRETE COLUMN, PROVIDE FRAMING & GYPSUM BOARD FINISH ON INTERIOR, EXPOSED FINISH AT PARKING AREAS.
- P14 CAST IN PLACE STAIR AND ELEVATOR SHAFT 2 HR RATED MECHANICAL SHAFT ENCLOSURE - REFER TO WALL TYPES
- P21 ALUMINUM STOREFRONT SYSTEM WITH ALUMINUM ENTRANCE DOOR - NON-RATED ASSEMBLY
- P24 WOVEN WIRE MESH PANELS
- P29 CURTAIN WALL VERTICAL MULLION WITH CUSTOM WOOD FIN - REFER TO DETAIL 8/A3-10
- P33 CURTAIN WALL DEEP VERTICAL MULLION - REFER TO DETAIL 7/A3-10

1 2ND FLOOR PLAN
1/8" = 1'-0"



PRELIMINARY PLAN REVIEW - NOT FOR CONSTRUCTION

PABST
PROFESSIONAL
CENTER
1008 W. JUNEAU AVENUE
MILWAUKEE, WI

RCA Project No.: 121030.01
Sheet Title
SECOND
FLOOR PLAN

Issue Date 3.20.2013
Sheet No. A1-02

Revisions
△

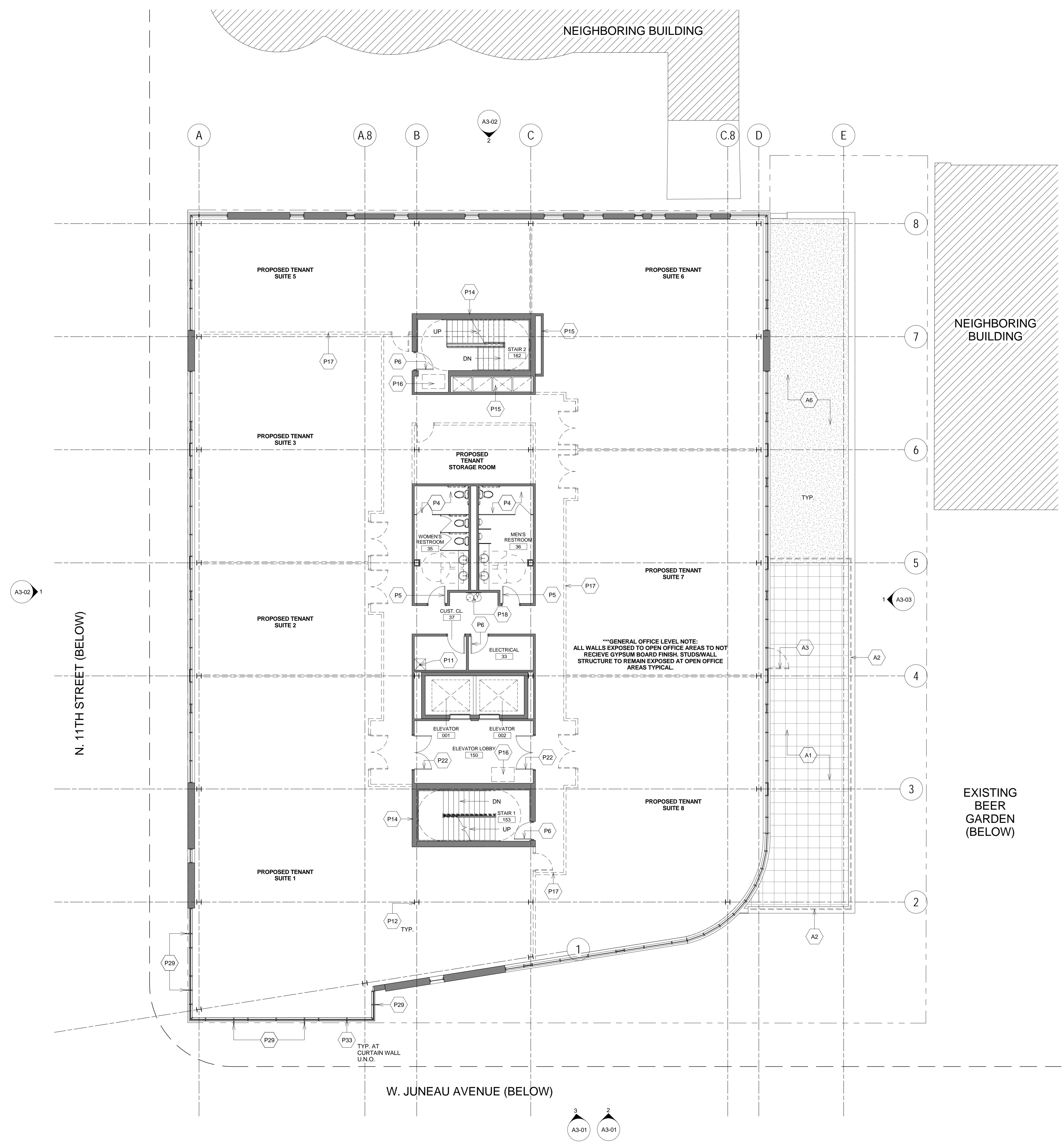
GENERAL NOTES

- SEE SHEET T1-01, T1-02, & T1-03 FOR ADDITIONAL PROJECT INFORMATION
- ALL INTERIOR PARTITIONS TO BE TYPE DA, U.N.O.
- PROVIDE BLOCKING TO SUPPORT ALL LIGHT FIXTURES, EQUIPMENT, CASEWORK, ETC.
- REFER TO SCHEMATIC DESIGN NARRATIVE FOR PROJECT MATERIALS/SYSTEMS

◇ EXTERIOR/INTERIOR PARTITION TYPE, FLOOR & ROOF TYPE - REFER TO SHEET T1-03

KEY NOTES

- A1 ALTERNATE BID: CONCRETE ROOF PAVERS ON ADJUSTABLE PEDISTALS
- A2 ALTERNATE BID: EXTERIOR BAR STOCK METAL RAILING - PAINT RAILING WITH HIGH PERFORMANCE PAINT
- A3 ALTERNATE BID: ALUMINUM ENTRANCE DOOR AT 3RD FLOOR TERRACE
- A6 ALTERNATE BID: GREEN ROOF SYSTEM
- P4 TOILET ROOM PLUMBING FIXTURES & TOILET ACCESSORIES
- P5 RESTROOM DOOR & FRAME
- P6 SERVICE ROOM DOOR & FRAME
- P11 CUSTODIAL CLOSET WITH MOP BASIN
- P12 EXPOSED STEEL COLUMN
- P14 CAST IN PLACE STAIR AND ELEVATOR SHAFT
- P15 2 HR RATED MECHANICAL SHAFT ENCLOSURE - REFER TO WALL TYPES
- P16 ACCESSIBLE AREA OF REFUGE
- P17 CONCEPTUAL MULTITENANT DIMISING WALL LAYOUT (N.I.C.)
- P18 ACCESSIBLE DRINKING FOUNTAINS - REFER TO PLUMBING SPECIFICATIONS
- P22 ELEVATOR LOBBY DOORS & FRAMES
- P29 CURTAIN WALL VERTICAL MULLION WITH CUSTOM WOOD FIN - REFER TO DETAIL 8/A3-10
- P33 CURTAIN WALL DEEP VERTICAL MULLION - REFER TO DETAIL 7/A3-10



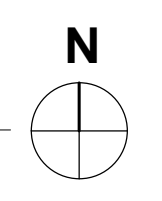
A3-02

N. 11TH STREET (BELOW)

EXISTING BEER GARDEN (BELOW)

W. JUNEAU AVENUE (BELOW)

1 3RD FLOOR PLAN
1/8" = 1'-0"



PRELIMINARY PLAN REVIEW - NOT FOR CONSTRUCTION

Revisions
△

PABST PROFESSIONAL CENTER
1008 W. JUNEAU AVENUE
MILWAUKEE, WI

RCA Project No.: 121030.01
Sheet Title
THIRD FLOOR PLAN

Issue Date 3.20.2013
Sheet No. A1-03

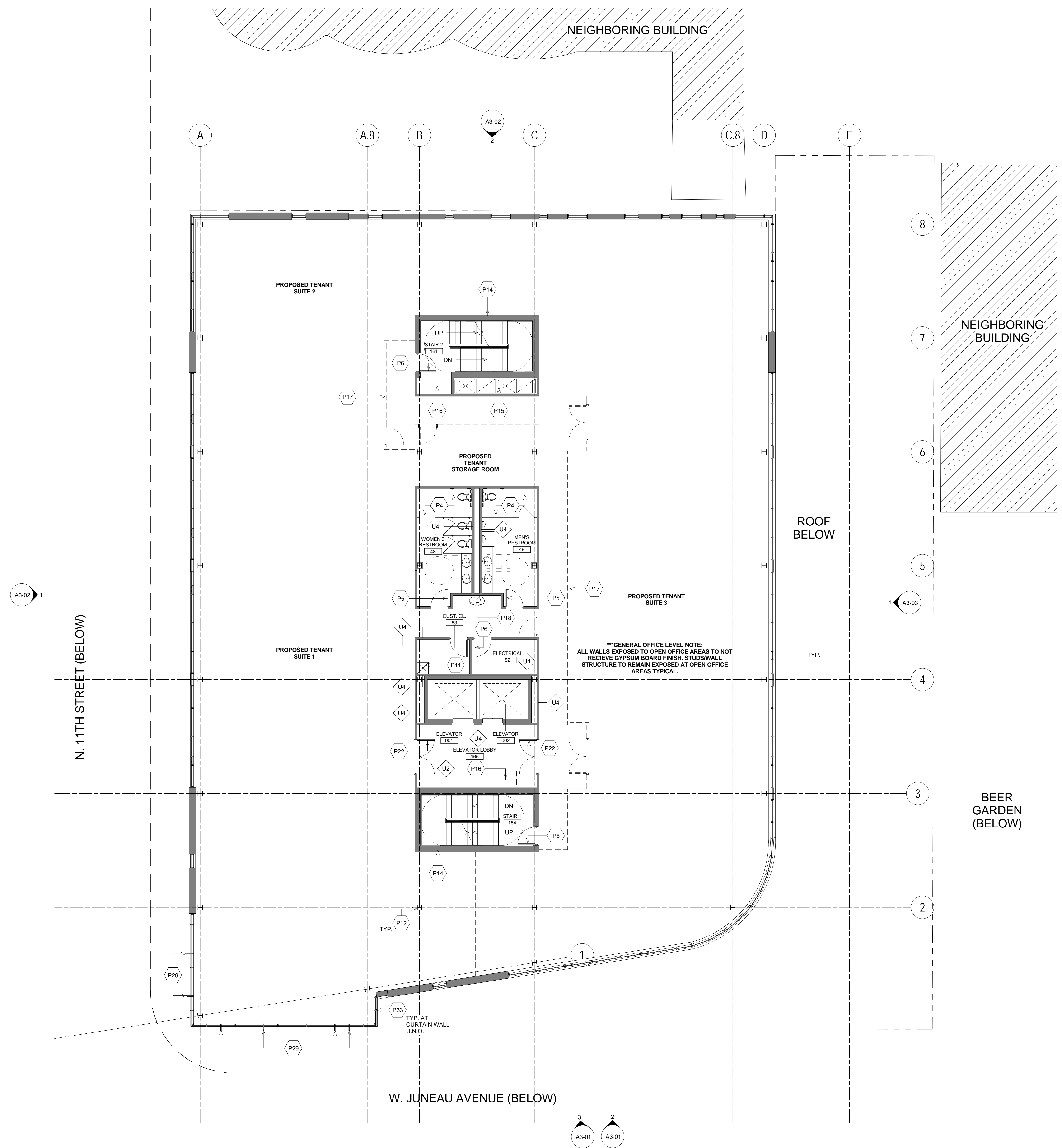
GENERAL NOTES

- SEE SHEET T1-01, T1-02, & T1-03 FOR ADDITIONAL PROJECT INFORMATION
- ALL INTERIOR PARTITIONS TO BE TYPE DA, U.N.O.
- PROVIDE BLOCKING TO SUPPORT ALL LIGHT FIXTURES, EQUIPMENT, CASEWORK, ETC.
- REFER TO SCHEMATIC DESIGN NARRATIVE FOR PROJECT MATERIALS/SYSTEMS

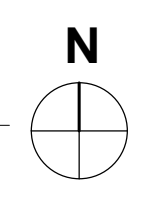
◇ EXTERIOR/INTERIOR PARTITION TYPE, FLOOR & ROOF TYPE - REFER TO SHEET T1-03

KEY NOTES

- P4 TOILET ROOM PLUMBING FIXTURES & TOILET ACCESSORIES
- P5 RESTROOM DOOR & FRAME
- P6 SERVICE ROOM DOOR & FRAME
- P11 CUSTODIAL CLOSET WITH MOP BASIN
- P12 EXPOSED STEEL COLUMN
- P14 CAST IN PLACE STAIR AND ELEVATOR SHAFT
- P15 2 HR RATED MECHANICAL SHAFT ENCLOSURE - REFER TO WALL TYPES
- P16 ACCESSIBLE AREA OF REFUGE
- P17 CONCEPTUAL MULTITENANT DIMISING WALL LAYOUT (N.I.C.)
- P18 ACCESSIBLE DRINKING FOUNTAINS - REFER TO PLUMBING SPECIFICATIONS
- P22 ELEVATOR LOBBY DOORS & FRAMES
- P29 CURTAIN WALL VERTICAL MULLION WITH CUSTOM WOOD FIN - REFER TO DETAIL 8/A3-10
- P33 CURTAIN WALL DEEP VERTICAL MULLION - REFER TO DETAIL 7/A3-10



1 4TH FLOOR PLAN
1/8" = 1'-0"



PRELIMINARY PLAN REVIEW - NOT FOR CONSTRUCTION

△ Revisions

PABST
PROFESSIONAL
CENTER
1008 W. JUNEAU AVENUE
MILWAUKEE, WI

Issue Date 3/20/2013

RCA Project No.: 121030.01
Sheet Title
FOURTH FLOOR
PLAN

Sheet No. A1-04

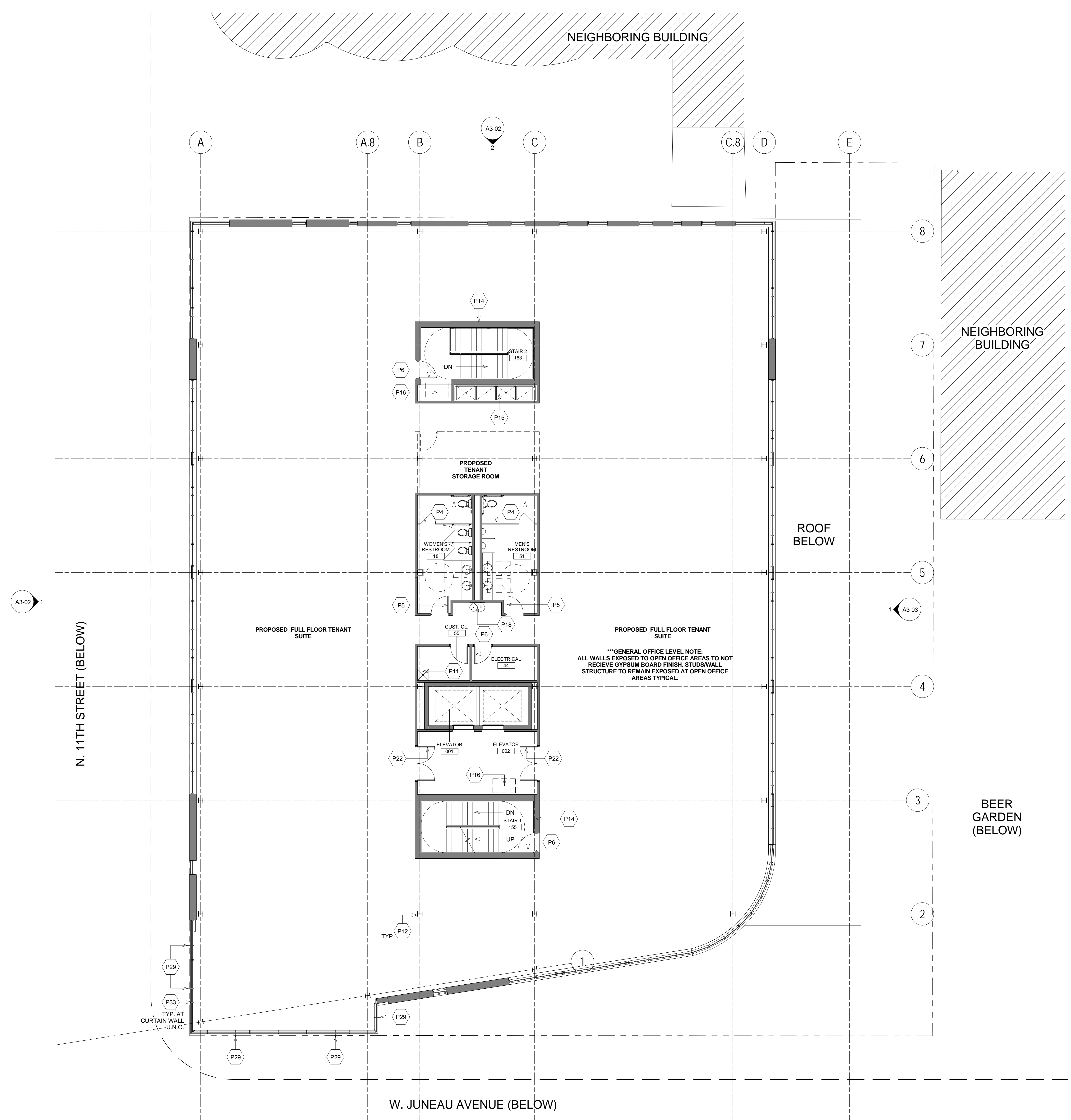
GENERAL NOTES

- SEE SHEET T1-01, T1-02, & T1-03 FOR ADDITIONAL PROJECT INFORMATION
- ALL INTERIOR PARTITIONS TO BE TYPE D4, U.N.O.
- PROVIDE BLOCKING TO SUPPORT ALL LIGHT FIXTURES, EQUIPMENT, CASEWORK, ETC.
- REFER TO SCHEMATIC DESIGN NARRATIVE FOR PROJECT MATERIALS/SYSTEMS

⬡ EXTERIOR/INTERIOR PARTITION TYPE, FLOOR & ROOF TYPE - REFER TO SHEET T1-03

KEY NOTES

- P4 TOILET ROOM PLUMBING FIXTURES & TOILET ACCESSORIES
- P5 RESTROOM DOOR & FRAME
- P6 SERVICE ROOM DOOR & FRAME
- P11 CUSTODIAL CLOSET WITH MOP BASIN
- P12 EXPOSED STEEL COLUMN
- P14 CAST IN PLACE STAIR AND ELEVATOR SHAFT
- P15 2 HR RATED MECHANICAL SHAFT ENCLOSURE - REFER TO WALL TYPES
- P16 ACCESSIBLE AREA OF REFUGE
- P18 ACCESSIBLE DRINKING FOUNTAINS - REFER TO PLUMBING SPECIFICATIONS
- P22 ELEVATOR LOBBY DOORS & FRAMES
- P29 CURTAIN WALL VERTICAL MULLION WITH CUSTOM WOOD FIN - REFER TO DETAIL 8/A3-10
- P33 CURTAIN WALL DEEP VERTICAL MULLION - REFER TO DETAIL 7/A3-10



A3-02 1

N. 11TH STREET (BELOW)

PROPOSED FULL FLOOR TENANT SUITE

PROPOSED FULL FLOOR TENANT SUITE

***GENERAL OFFICE LEVEL NOTE:
ALL WALLS EXPOSED TO OPEN OFFICE AREAS TO NOT
RECEIVE GYPSUM BOARD FINISH. STUDSWALL
STRUCTURE TO REMAIN EXPOSED AT OPEN OFFICE
AREAS TYPICAL.

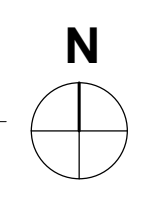
ROOF BELOW

NEIGHBORING BUILDING

BEER GARDEN (BELOW)

W. JUNEAU AVENUE (BELOW)

A3-01 3
A3-01 2



1 5TH FLOOR PLAN
1/8" = 1'-0"

PRELIMINARY PLAN REVIEW - NOT FOR CONSTRUCTION

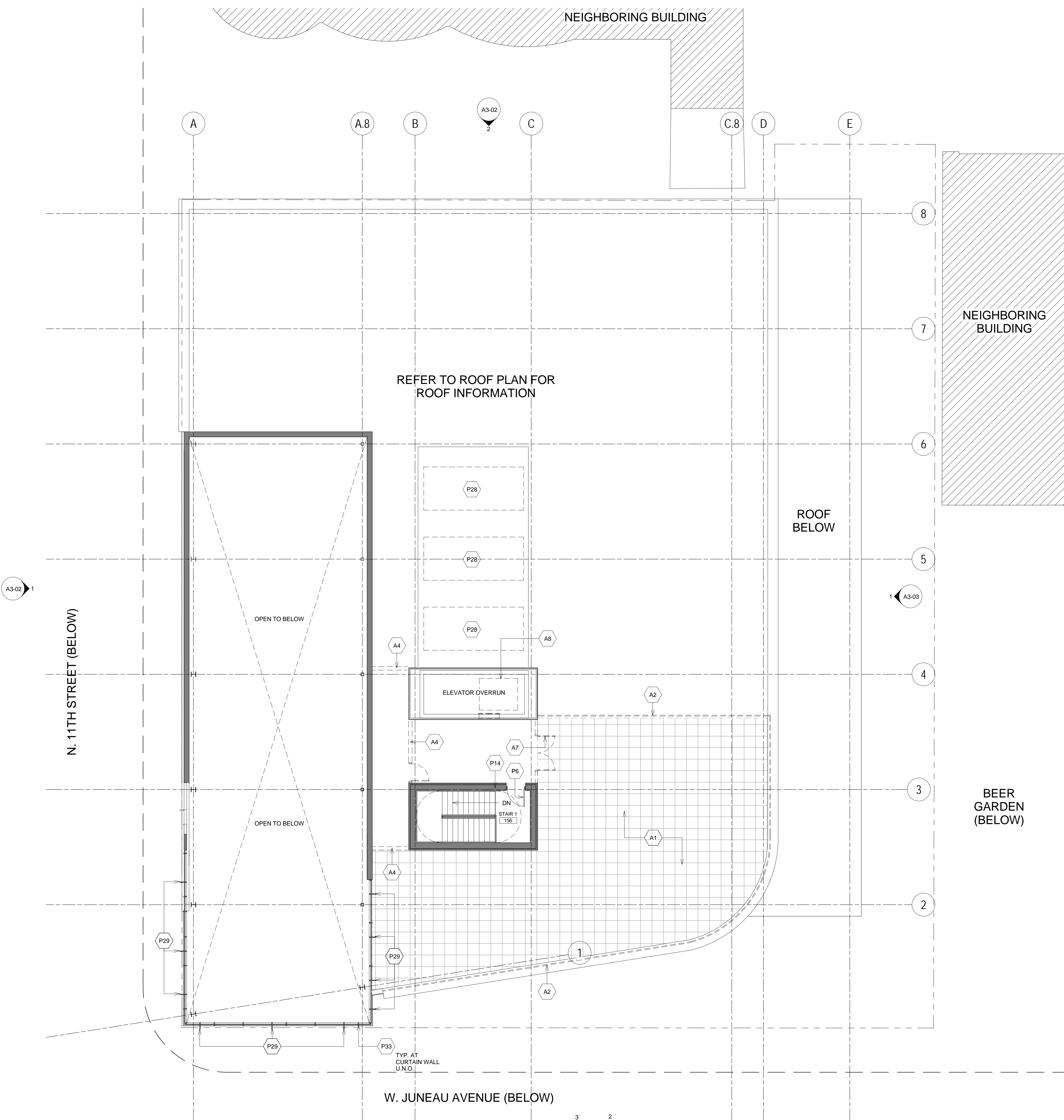
△ Revisions

PABST
PROFESSIONAL
CENTER
1008 W. JUNEAU AVENUE
MILWAUKEE, WI

Issue Date 3/20/2013

RCA Project No.: 121030.01
Sheet Title
FIFTH FLOOR
PLAN

Sheet No. A1-05



GENERAL NOTES

1. SEE SHEET T1-01, T1-02, & T1-03 FOR ADDITIONAL PROJECT INFORMATION
2. ALL INTERIOR PARTITIONS TO BE TYPE D4, U.N.O.
3. PROVIDE BLOCKING TO SUPPORT ALL LIGHT FIXTURES, EQUIPMENT, CASEWORK, ETC.
4. REFER TO SCHEMATIC DESIGN NARRATIVE FOR PROJECT MATERIALS/SYSTEMS

◇ EXTERIOR/INTERIOR PARTITION TYPE, FLOOR & ROOF TYPE - REFER TO SHEET T1-03

KEY NOTES

- A1 ALTERNATE BID: CONCRETE ROOF PAVERS ON ADJUSTABLE PEDISTALS
- A2 ALTERNATE BID: EXTERIOR BAR STOCK METAL RAILING - PAINT RAILING WITH HIGH PERFORMANCE PAINT
- A4 ALTERNATE BID: STORAGE ROOM FOR ROOF DECK
- A7 ALTERNATE BID: ALUMINUM STOREFRONT SYSTEM WITH ALUMINUM ENTRANCE DOORS
- A8 ALTERNATE BID: ADDITIONAL ELEVATOR STOP AT ROOF SERVICE ROOM DOOR & FRAME
- P6 CAST IN PLACE STAIR AND ELEVATOR SHAFT
- P14 ROOFTOP MECHANICAL UNIT ON ELEVATED STEEL MECHANICAL CURB - REFER TO MECHANICAL SPECIFICATIONS
- P28 CURTAIN WALL VERTICAL MULLION WITH CUSTOM WOOD FIN - REFER TO DETAIL 8/A3-10
- P33 CURTAIN WALL DEEP VERTICAL MULLION - REFER TO DETAIL 7/A3-10

1 6TH FLOOR PLAN
1/8" = 1'-0"

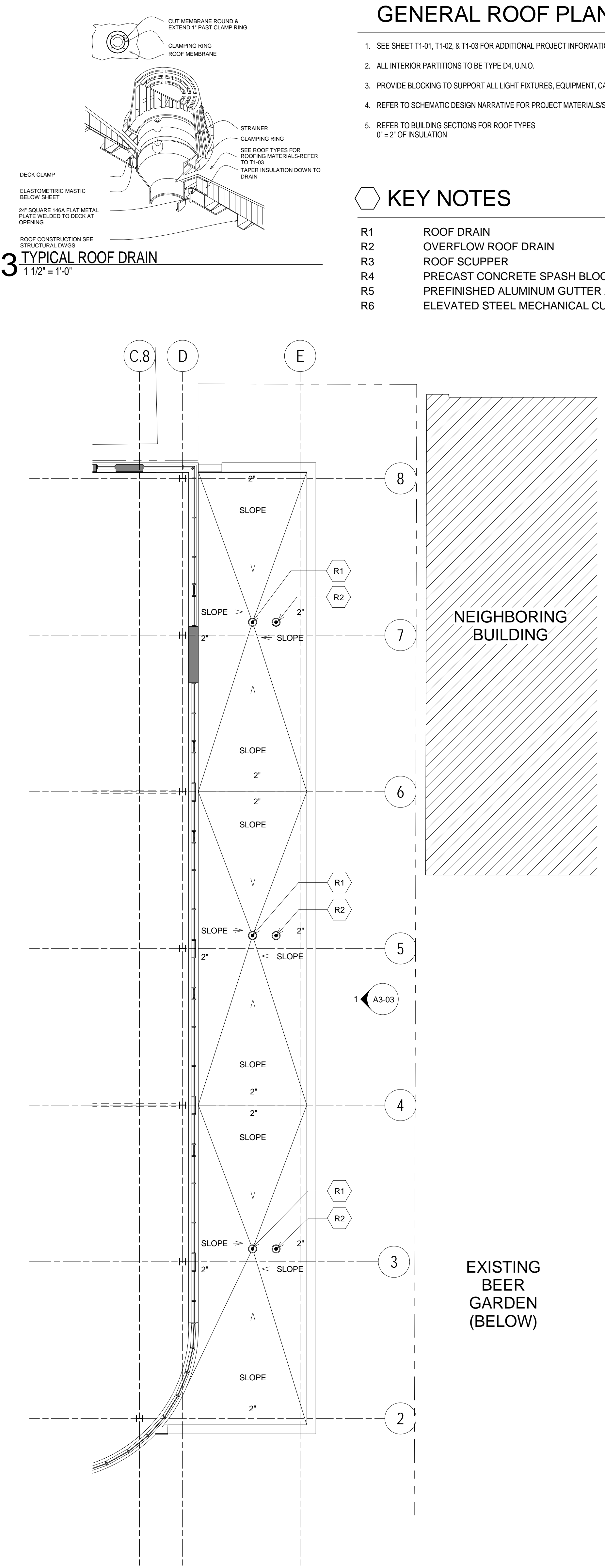
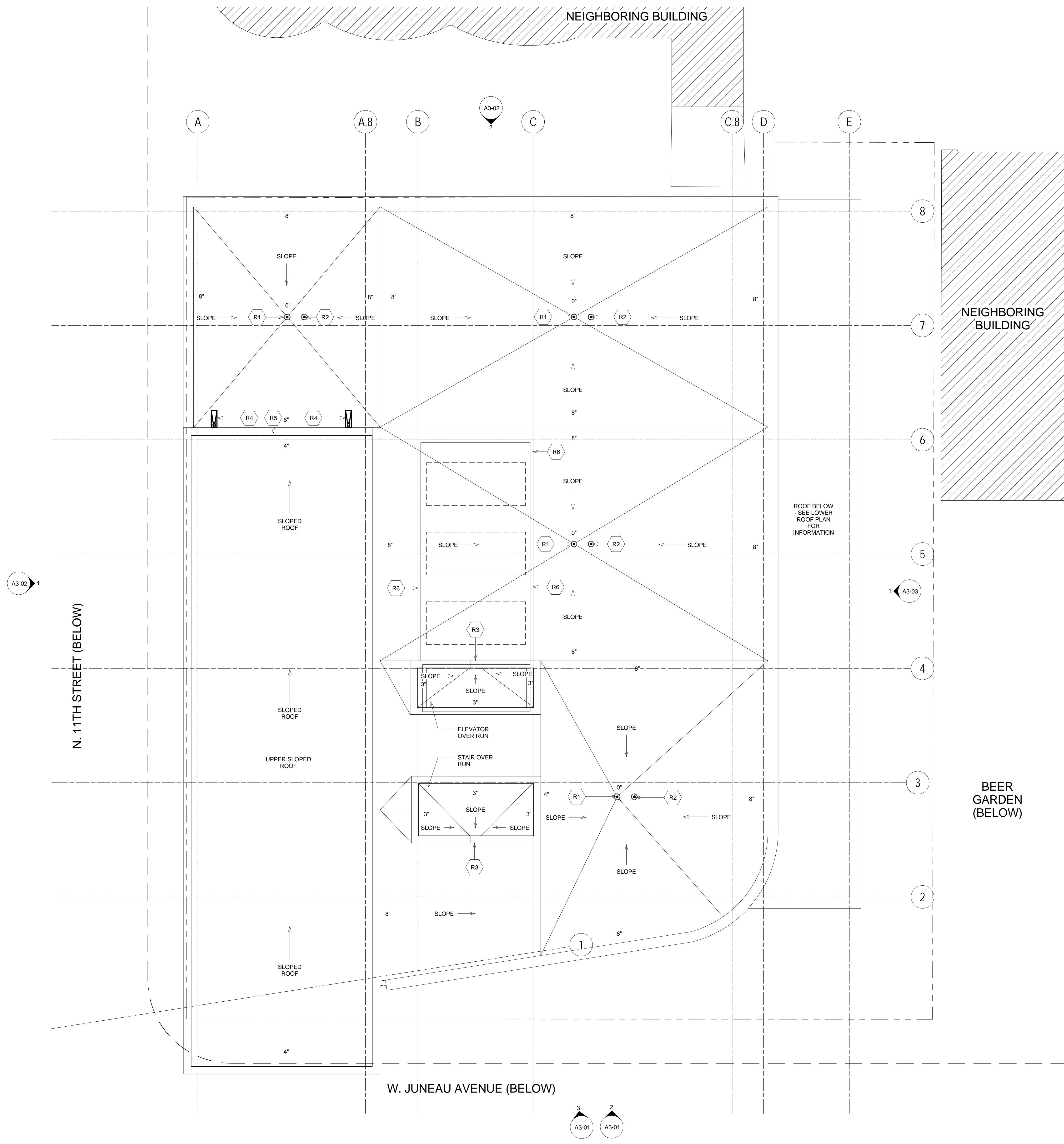
PRELIMINARY PLAN REVIEW - NOT FOR CONSTRUCTION

△ Revisions

PABST PROFESSIONAL CENTER
1008 W. JUNEAU AVENUE
MILWAUKEE, WI

RCA Project No.: 121030.01
Sheet Title: **SIXTH FLOOR PLAN**

Issue Date: 3.20.2013
A1-06



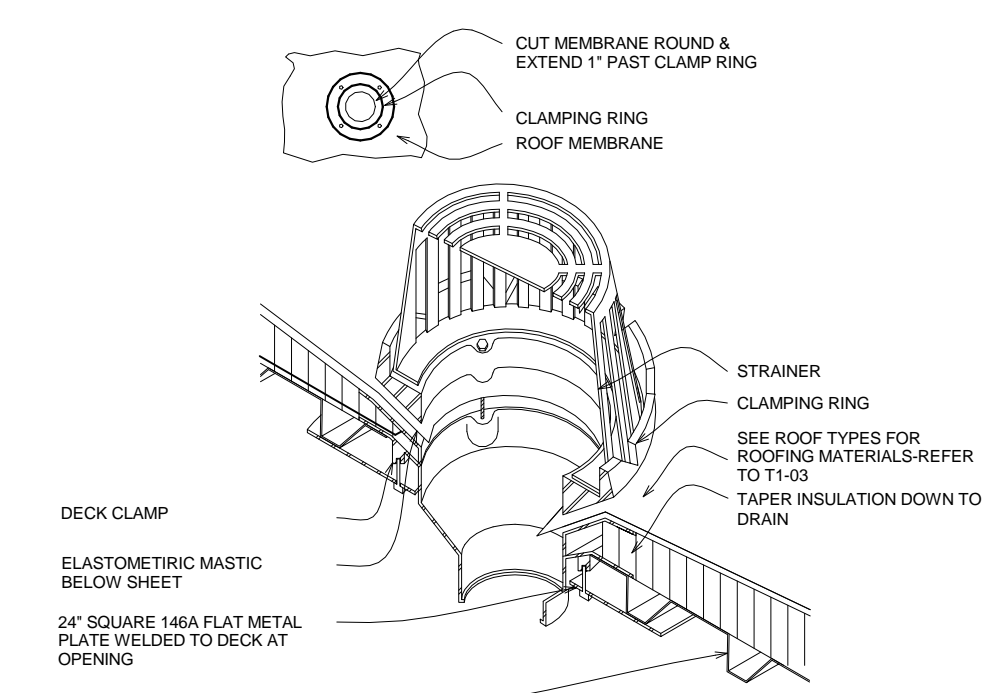
GENERAL ROOF PLAN NOTES

1. SEE SHEET T1-01, T1-02, & T1-03 FOR ADDITIONAL PROJECT INFORMATION
2. ALL INTERIOR PARTITIONS TO BE TYPE D4, U.N.O.
3. PROVIDE BLOCKING TO SUPPORT ALL LIGHT FIXTURES, EQUIPMENT, CASEWORK, ETC.
4. REFER TO SCHEMATIC DESIGN NARRATIVE FOR PROJECT MATERIALS/SYSTEMS
5. REFER TO BUILDING SECTIONS FOR ROOF TYPES
(7" = 2" OF INSULATION)

KEY NOTES

- R1 ROOF DRAIN
- R2 OVERFLOW ROOF DRAIN
- R3 ROOF SCUPPER
- R4 PRECAST CONCRETE SPASH BLOCK
- R5 PREFINISHED ALUMINUM GUTTER AND DOWN SPOUT
- R6 ELEVATED STEEL MECHANICAL CURB ASSEMBLY

3 TYPICAL ROOF DRAIN
1 1/2" = 1'-0"



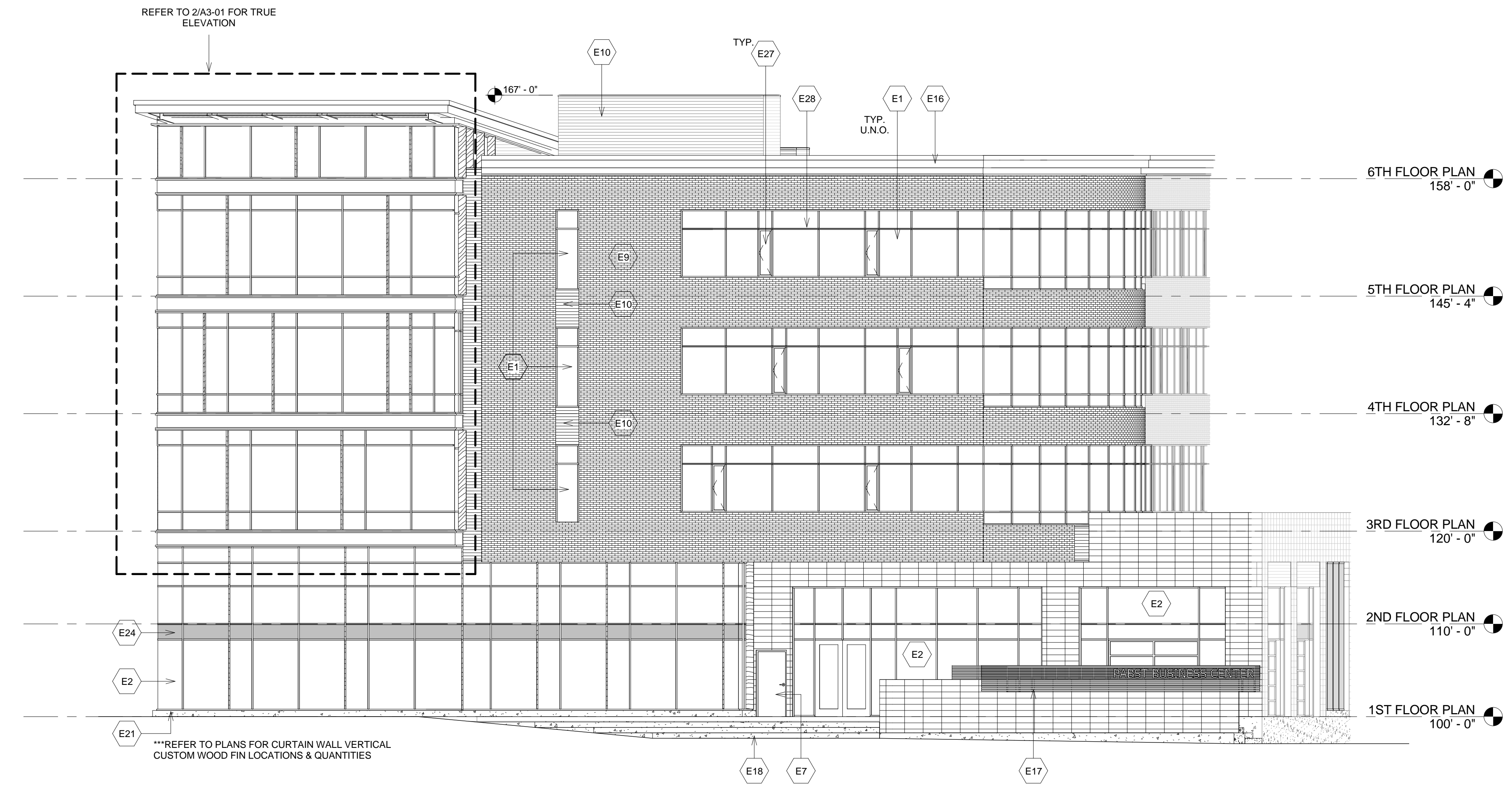
PRELIMINARY PLAN REVIEW - NOT FOR CONSTRUCTION

GENERAL NOTES

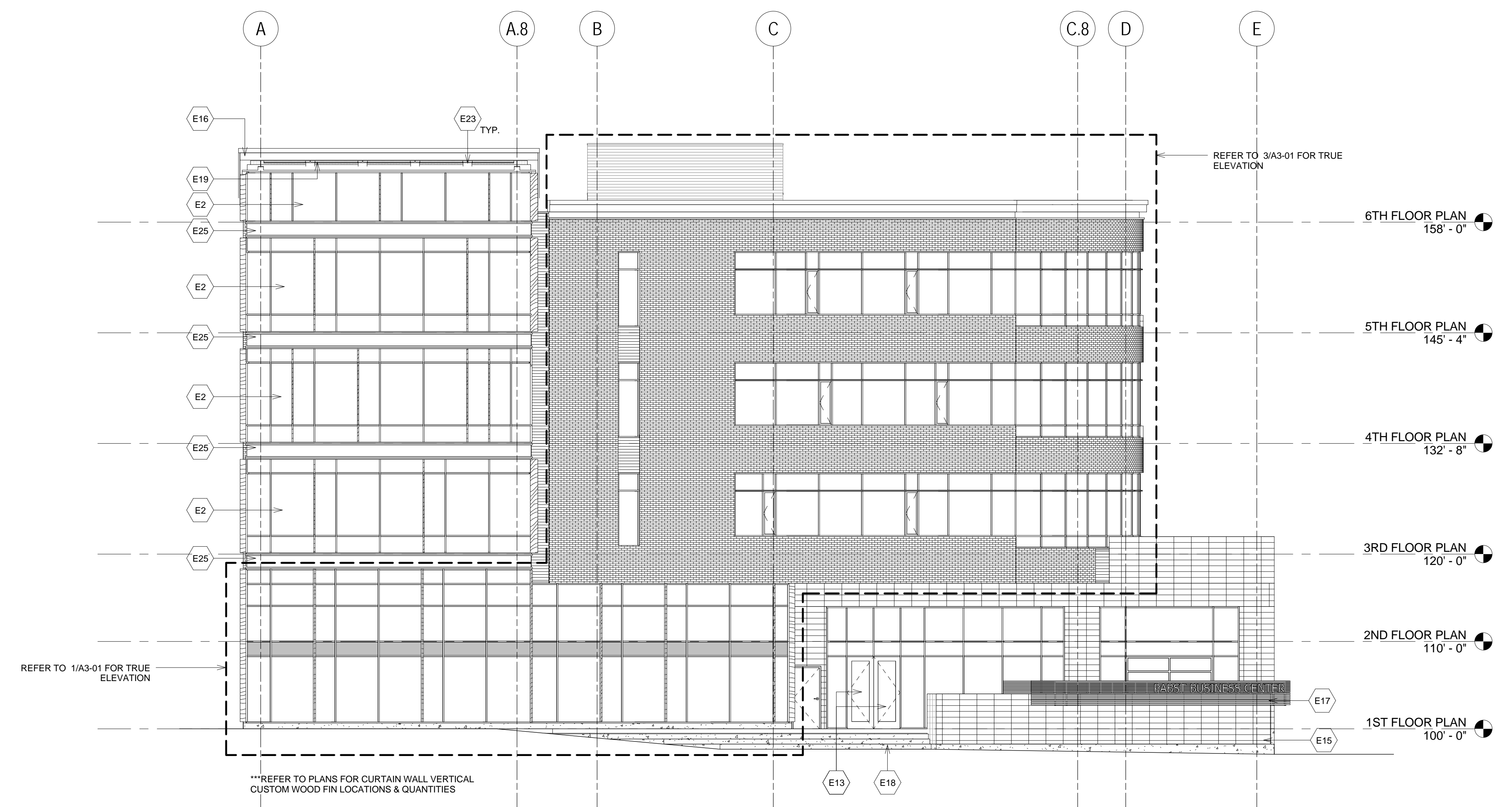
- SEE SHEET XXXX.XXXX.XXXX FOR ADDITIONAL PROJECT INFORMATION
- REFER TO WALL & BUILDING SECTIONS FOR ADDITIONAL INFORMATION
- PROVIDE BLOCKING TO SUPPORT ALL LIGHT FIXTURES, EQUIPMENT, CASEWORK, ETC.
- REFER TO SCHEMATIC DESIGN NARRATIVE FOR PROJECT MATERIALS/SYSTEMS

KEY NOTES

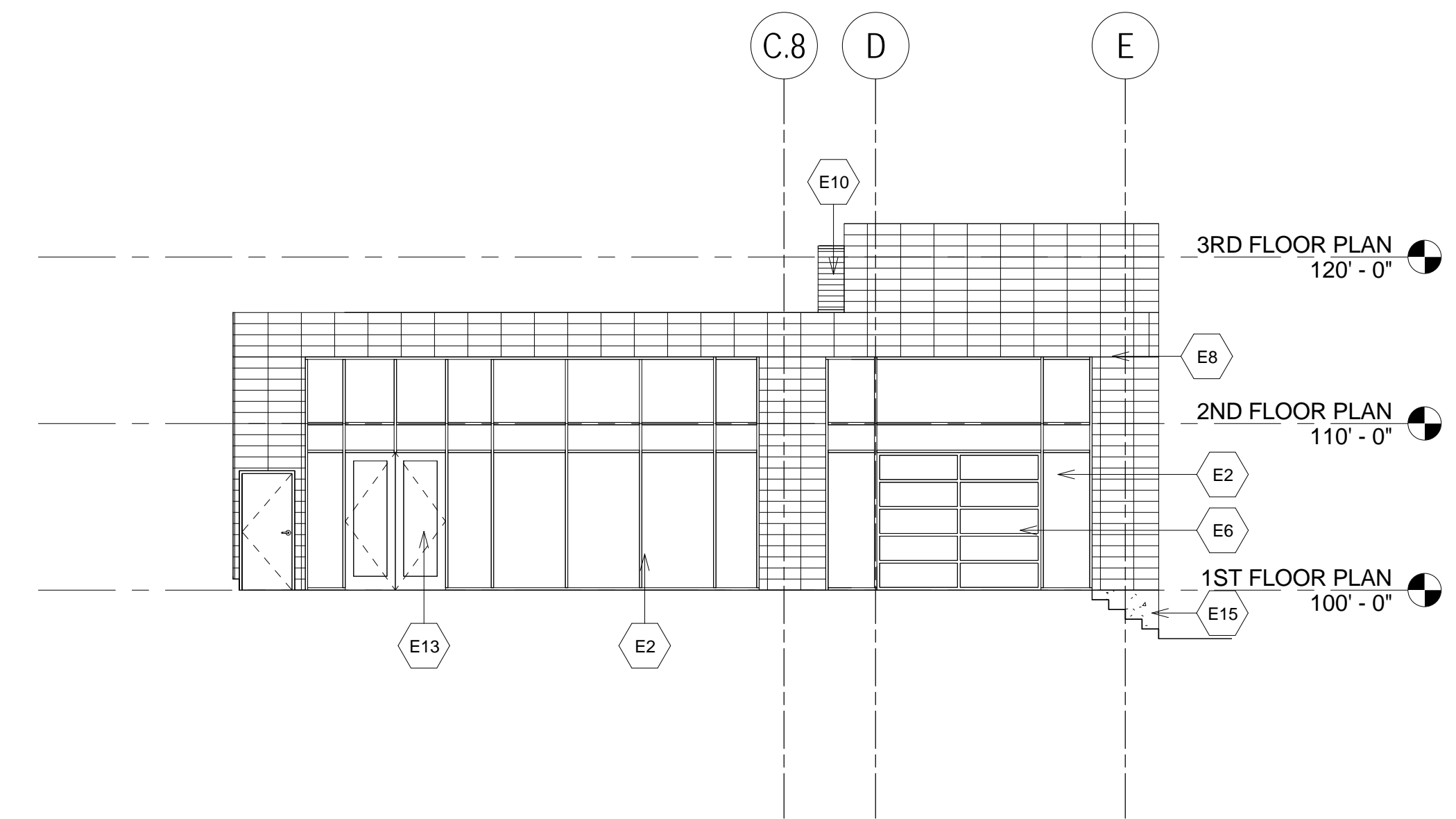
- E1 ALUMINUM STOREFRONT SYSTEM
- E2 ALUMINUM CURTAINWALL SYSTEM
- E6 SECTIONAL OVERHEAD CONFERENCE ROOM DOORS
- E7 EXTERIOR METAL DOOR
- E8 BURNISHED CONCRETE MASONRY UNIT CLADDING - REFER TO SECTIONS AND DETAILS
- E9 BRICK MASONRY UNIT CLADDING - REFER TO SECTIONS AND DETAILS
- E10 METAL PANEL SYSTEM - REFER TO SECTIONS AND DETAILS
- E13 WOOD ENTRANCE DOORS
- E15 EXPOSED CAST IN PLACE CONCRETE - REFER TO STRUCTURAL DRAWINGS - RUBBED FINISH
- E16 SHEET METAL FLASHING
- E17 HORIZONTAL WOOD BATTEN SCREEN WITH EXPOSED STEEL SUPPORT SYSTEM
- E18 EXPOSED CAST IN PLACE CONCRETE STAIRS - REFER TO STRUCTURAL DRAWINGS
- E19 PHENOLIC PANEL SYSTEM
- E21 EXPOSED CAST IN PLACE 8" CONCRETE CURB - RUBBED FINISH
- E23 EXPOSED STEEL STRUCTURE - PAINT STEEL WITH HIGH PERFORMANCE PAINT
- E24 SPANDREL GLASS
- E25 METAL PANEL GLAZING
- E27 OPERABLE WINDOW
- E28 ALUMINUM STOREFRONT SYSTEM BULLET CAP - REFER TO DETAIL 3/A3-10



3 SOUTHEAST ELEVATION
1/8" = 1'-0"



2 SOUTH ELEVATION
1/8" = 1'-0"



1 BUILDING ENTRANCE ELEVATION
1/8" = 1'-0"

PRELIMINARY PLAN REVIEW - NOT FOR CONSTRUCTION

Revisions
△

PABST PROFESSIONAL CENTER
1108 W. LINCOLN AVENUE
MILWAUKEE, WI

RCA Project No.: 121030.01
Sheet Title: EXTERIOR ELEVATIONS
Issue Date: 3.20.2013

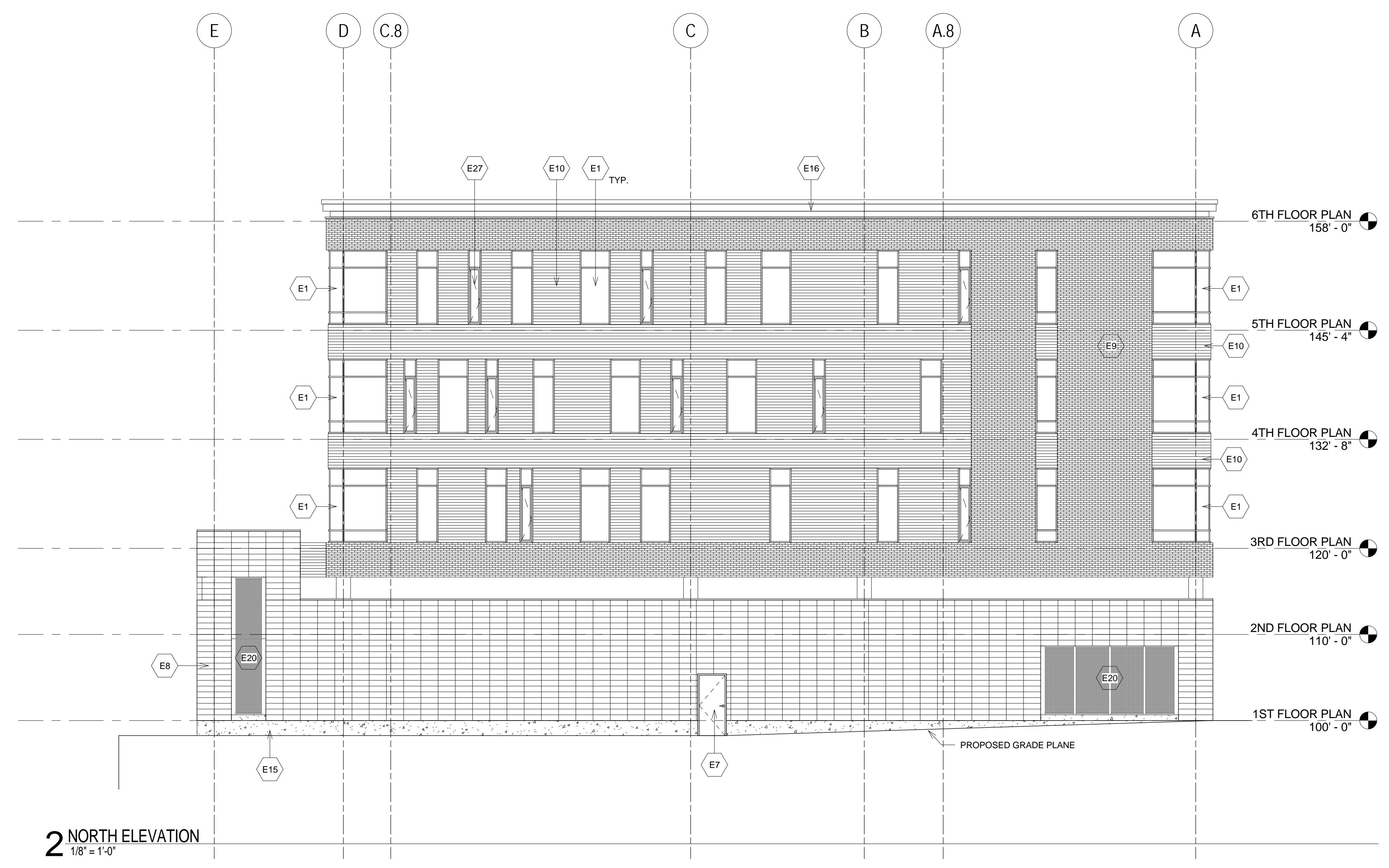
Sheet No. **A3-01**

GENERAL NOTES

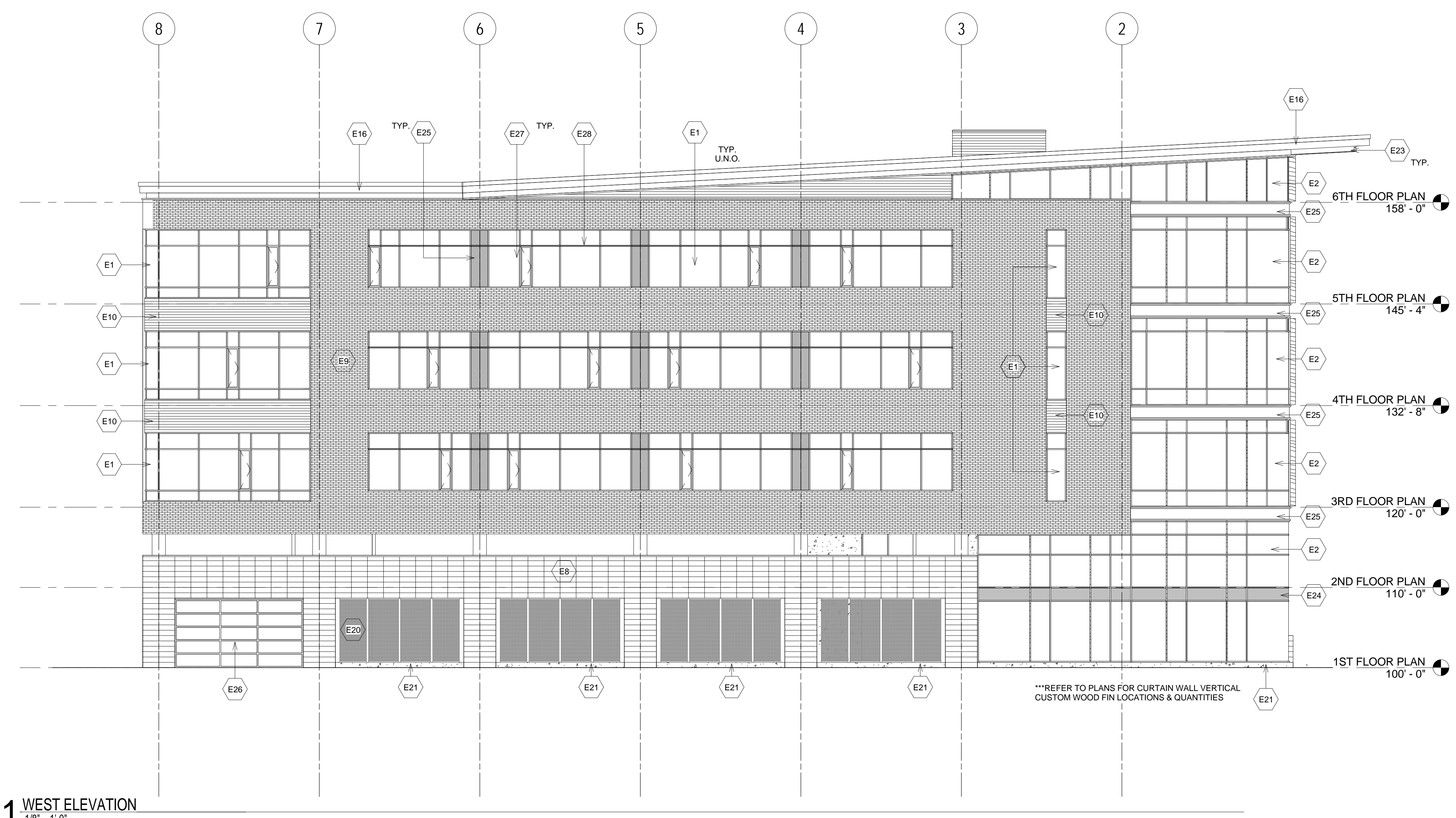
1. SEE SHEET XXXX.XXXX.XXXX FOR ADDITIONAL PROJECT INFORMATION
2. REFER TO WALL & BUILDING SECTIONS FOR ADDITIONAL INFORMATION
3. PROVIDE BLOCKING TO SUPPORT ALL LIGHT FIXTURES, EQUIPMENT, CASEWORK, ETC.
4. REFER TO SCHEMATIC DESIGN NARRATIVE FOR PROJECT MATERIALS/SYSTEMS

KEY NOTES

- E1 ALUMINUM STOREFRONT SYSTEM
- E2 ALUMINUM CURTAINWALL SYSTEM
- E7 EXTERIOR METAL DOOR
- E8 BURNISHED CONCRETE MASONRY UNIT CLADDING - REFER TO SECTIONS AND DETAILS
- E9 BRICK MASONRY UNIT CLADDING - REFER TO SECTIONS AND DETAILS
- E10 METAL PANEL SYSTEM - REFER TO SECTIONS AND DETAILS
- E15 EXPOSED CAST IN PLACE CONCRETE - REFER TO STRUCTURAL DRAWINGS - RUBBED FINISH
- E16 SHEET METAL FLASHING
- E20 WOVEN WIRE MESH PANELS
- E21 EXPOSED CAST IN PLACE 8" CONCRETE CURB - RUBBED FINISH
- E23 EXPOSED STEEL STRUCTURE - PAINT STEEL WITH HIGH PERFORMANCE PAINT
- E24 SPANDREL GLASS
- E25 METAL PANEL GLAZING
- E26 SECTIONAL OVERHEAD GARAGE DOOR
- E27 OPERABLE WINDOW
- E28 ALUMINUM STOREFRONT SYSTEM BULLET CAP - REFER TO DETAIL 3/A3-10



2 NORTH ELEVATION
1/8" = 1'-0"



1 WEST ELEVATION
1/8" = 1'-0"

PRELIMINARY PLAN REVIEW - NOT FOR CONSTRUCTION

Revisions
△

PABST
PROFESSIONAL
CENTER
1108 W. LINCOLN AVENUE
MILWAUKEE, WI

Issue Date 3.20.2013

RCA Project No.: 121030.01
Sheet Title
EXTERIOR
ELEVATIONS

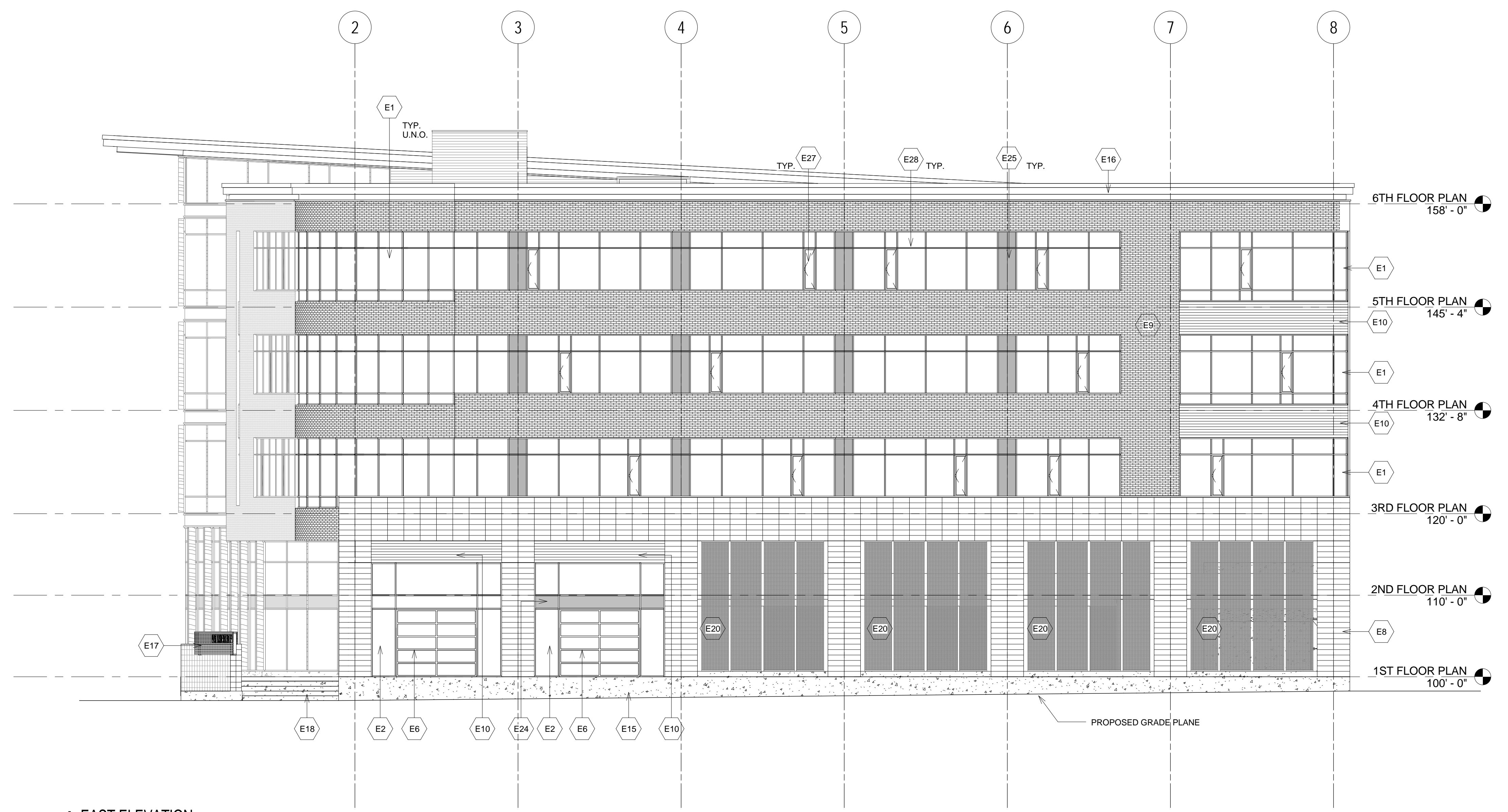
Sheet No. A3-02

GENERAL NOTES

1. SEE SHEET XXXX, XXXX, XXXX FOR ADDITIONAL PROJECT INFORMATION
2. REFER TO WALL & BUILDING SECTIONS FOR ADDITIONAL INFORMATION
3. PROVIDE BLOCKING TO SUPPORT ALL LIGHT FIXTURES, EQUIPMENT, CASEWORK, ETC.
4. REFER TO SCHEMATIC DESIGN NARRATIVE FOR PROJECT MATERIALS/SYSTEMS

KEY NOTES

- E1 ALUMINUM STOREFRONT SYSTEM
- E2 ALUMINUM CURTAINWALL SYSTEM
- E6 SECTIONAL OVERHEAD CONFERENCE ROOM DOORS
- E8 BURNISHED CONCRETE MASONRY UNIT CLADDING - REFER TO SECTIONS AND DETAILS
- E9 BRICK MASONRY UNIT CLADDING - REFER TO SECTIONS AND DETAILS
- E10 METAL PANEL SYSTEM - REFER TO SECTIONS AND DETAILS
- E15 EXPOSED CAST IN PLACE CONCRETE - REFER TO STRUCTURAL DRAWINGS - RUBBED FINISH
- E16 SHEET METAL FLASHING
- E17 HORIZONTAL WOOD BATTEN SCREEN WITH EXPOSED STEEL SUPPORT SYSTEM
- E18 EXPOSED CAST IN PLACE CONCRETE STAIRS - REFER TO STRUCTURAL DRAWINGS
- E20 WOVEN WIRE MESH PANELS
- E24 SPANDREL GLASS
- E25 METAL PANEL GLAZING
- E27 OPERABLE WINDOW
- E28 ALUMINUM STOREFRONT SYSTEM BULLET CAP - REFER TO DETAIL 3/A3-10



1 EAST ELEVATION
1/8" = 1'-0"

PRELIMINARY PLAN REVIEW - NOT FOR CONSTRUCTION

Revisions
△

**PABST
PROFESSIONAL
CENTER**
1108 W. LINCOLN AVENUE
MILWAUKEE, WI

Issue Date 3/20/2013

RCA Project No.: 12100.01
Sheet Title
**EXTERIOR
ELEVATIONS**

Sheet No. **A3-03**